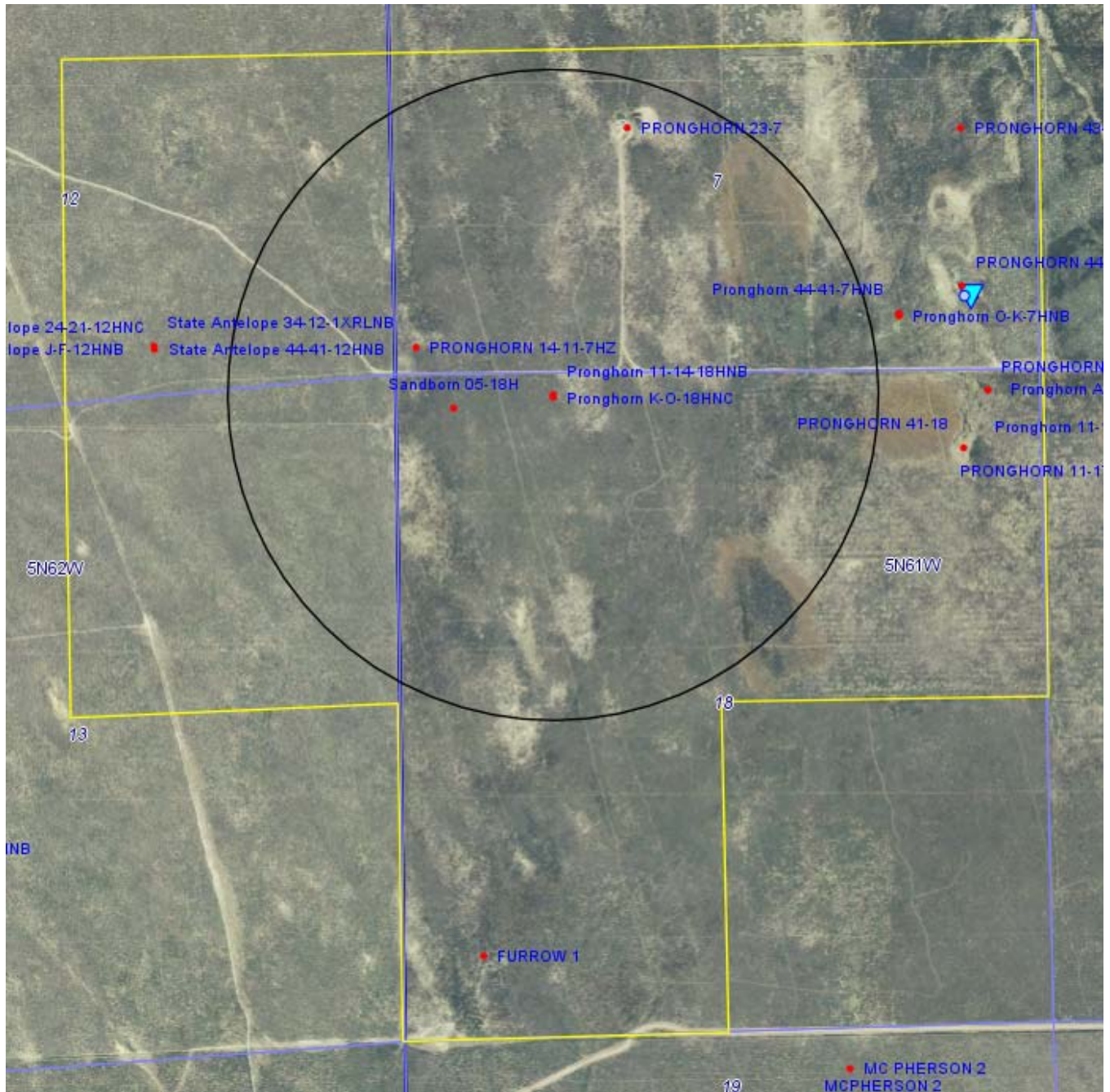


Bonanza Creek Energy Operating Company LLC



Pronghorn F-18 DWR Well Status
Sec 18 T5N R61W
Bonanza Creek Energy Operating Company LLC

WELL DESCRIPTION	LOCATION	WELL INFORMATION				Well Status
		Depth	Top Perf	Bottom Perf	Aquifer	
Receipt=0481834B, Permit=0236585-- LINNEBUR LLOYD	SESE 7 5 N-61W	0	0	0	GW	Previously sampled 1/21/13 (Sample Site ID: 752315) Domestic Stock