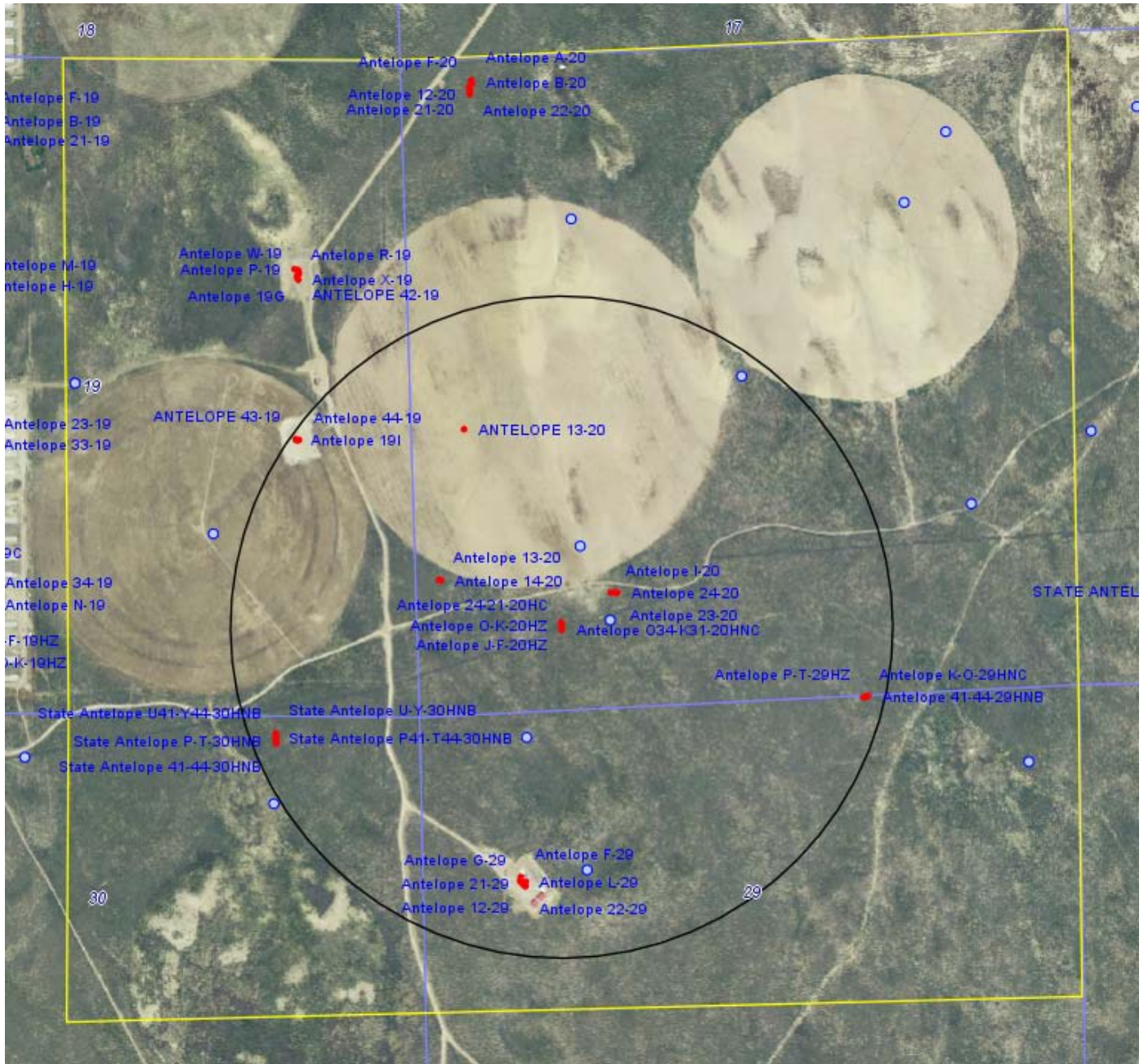


Antelope J-20 Pad DWR Wells

Sec 20 T5N R62W

Bonanza Creek Energy Operating Company LLC



Antelope J-20 Pad DWR Well Status
Sec 20 T5N R62W
Bonanza Creek Energy Operating Company LLC

WELL DESCRIPTION	LOCATION	WELL INFORMATION				Well Status
		Depth	Top Perf	Bottom Perf	Aquifer	
Receipt=0000056, Permit=1992001-AB- NATIONAL HOG FARMS	19 5 N-62W	160	0	0	GW	Plugged and abandoned.
Receipt=3659429, Permit=0290984-- 70 RANCH RESOURCE DEVELOPMENT LLC	19 5 N-62W	0	0	0	GW	Not representative/equipped (Monitoring Well).
Receipt=9063880, Permit=0036912-- ALLARD CATTLE CO	NWSE 19 5 N-62W	167	0	0	GW	Not equipped/not maintained - Stock well
Receipt=0018127, Permit=0018127-MH- NATIONAL HOG FARM	20 5 N-62W	75	20	75	GW	Not representative/equipped (Monitoring Well).
Receipt=0016005, Permit=0016005-MH- NATIONAL HOG FARMS	NE 20 5 N-62W	0	0	0	GW	Not representative/equipped (Monitoring Well).
Receipt=0314638K, Permit=0040921-M- NATIONAL HOG FARMS INC	NENE 20 5 N-62W	25	5	25	GW	Plugged and abandoned.
Receipt=0023005, Permit=0023005-MH- NATIONAL HOG FARM	NW 20 5 N-62W	19	0	0	GW	Plugged and abandoned.
Receipt=0336034H, Permit=0163753-- NATIONAL HOG FARMS INC	NESE 20 5 N-62W	75	20	75	GW	Plugged and abandoned.
Receipt=0023006, Permit=0023006-MH- NATIONAL HOG FARM	SW 20 5 N-62W	65	0	0	GW	Plugged and abandoned.
Receipt=0336034I, Permit=0163754-- NATIONAL HOG FARMS INC	SESW 20 5 N-62W	41	20	41	GW	Plugged and abandoned.
Receipt=9065627, Permit=0081437-- ALLARD CATTLE COMPANY	NENE 29 5 N-62W	150	0	0	GW	Not equipped/not maintained - Stock well
Receipt=0023007, Permit=0023007-MH- NATIONAL HOG FARM	NW 29 5 N-62W	50	0	0	GW	Plugged and abandoned.
Receipt=0311531E, Permit=0036657-M- NATIONAL HOG FARMS	NWNW 29 5 N-62W	40	0	0	GW	Plugged and abandoned.
Receipt=9065624, Permit=0081434-- STATE BOARD OF LAND COMMISSIONERS	NENE 30 5 N-62W	190	0	0	GW	Not equipped/not maintained - Stock well