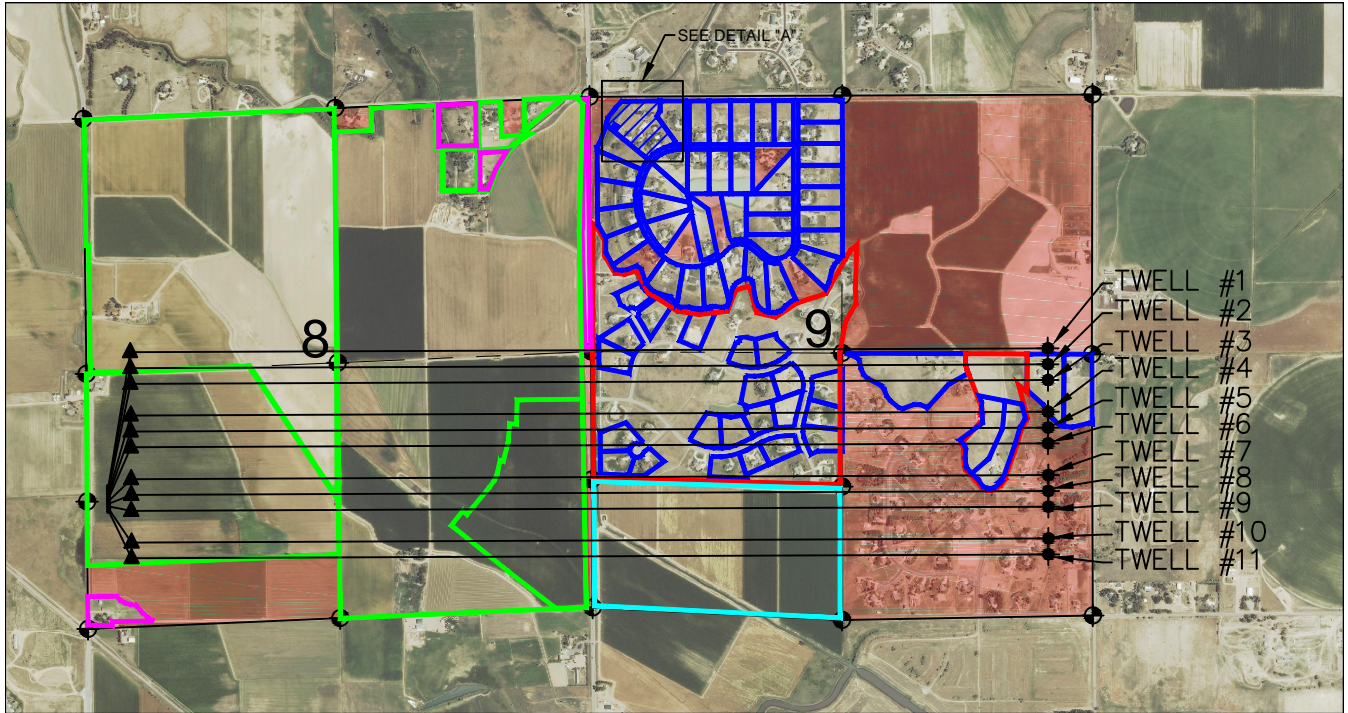


LEASE DRAWING: TWELL 8-I



DETAIL "A"
SCALE - 1"=500'

LEGEND

- = EXISTING MONUMENT
- = PROPOSED WELL
- ◆ = BOTTOM HOLE
- ◆ = EXISTING WELL
- = HILL LAND SERVICES, INC.
- = LAND ENERGY, INC.
- = EXTRACTION OIL & GAS, LLC
- = ENERGY & EXPLORATION PARTNERS, LLC
- = NO LEASE DATA

NOTES:

TWELL #1 TO BE AT 1474' FSL, 224' FWL.
BOTTOM HOLE AT 2640' FNL & 460' FEL.
TWELL #2 TO BE AT 1448' FSL, 224' FWL.
BOTTOM HOLE AT 2625' FSL & 460' FEL.
TWELL #3 TO BE AT 1423' FSL, 224' FWL.
BOTTOM HOLE AT 2460' FSL & 460' FEL.
TWELL #4 TO BE AT 1397' FSL, 224' FWL.
BOTTOM HOLE AT 2130' FSL & 460' FEL.
TWELL #5 TO BE AT 1371' FSL, 224' FWL.
BOTTOM HOLE AT 1965' FSL & 460' FEL.
TWELL #6 TO BE AT 1345' FSL, 224' FWL.
BOTTOM HOLE AT 1800' FSL & 460' FEL.

TWELL #7 TO BE AT 1319' FSL, 224' FWL.
BOTTOM HOLE AT 1470' FSL & 460' FEL.
TWELL #8 TO BE AT 1293' FSL, 224' FWL.
BOTTOM HOLE AT 1305' FNL & 460' FEL.
TWELL #9 TO BE AT 1267' FSL, 224' FWL.
BOTTOM HOLE AT 1140' FSL & 460' FEL.
TWELL #10 TO BE AT 1241' FSL, 224' FWL.
BOTTOM HOLE AT 810' FSL & 460' FEL.
TWELL #11 TO BE AT 1215' FSL, 224' FWL.
BOTTOM HOLE AT 645' FSL & 460' FEL.

PREPARED BY:



BAYSWATER EXPLORATION & PRODUCTION, LLC

FIELD DATE:
02-19-14

DRAWING DATE:
03-11-14

BY:
KAD

PAD NAME:
TWELL 8-I

SURFACE LOCATION:
NW 1/4 SW 1/4, SEC. 8, T6N, R67W, 6TH P.M.
WELD COUNTY, COLORADO



0 1000 2000
SCALE: 1"=2000'