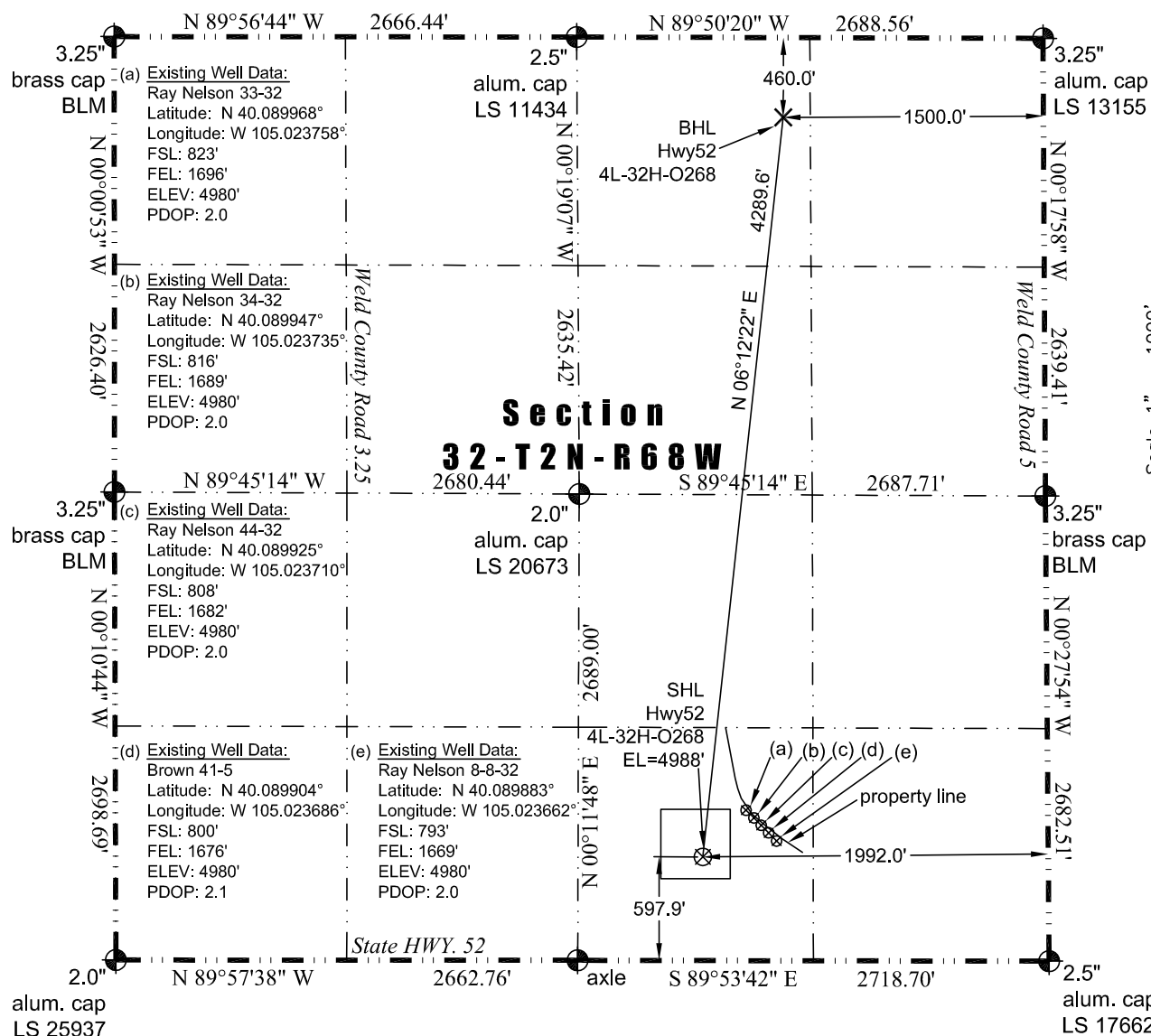




# WELL LOCATION CERTIFICATE

THIS MAP DOES NOT REPRESENT A BOUNDARY SURVEY

Washburn Land Surveying  
www.WashburnSurveying.com  
970-232-9645



In accordance with a request from Jay Knutson of EnCana Oil & Gas (USA) Inc., Washburn Land Surveying, LLC has determined the location of the **Hwy52 4L-32H-O268** well site to be SHL: 597.9' FSL and 1992.0' FEL, (BHL: 460.0' FNL and 1500.0' FEL), as measured at ninety (90) degrees from the section lines of Section 32, Township 2 North, Range 68 West of the 6th Principal Meridian, Weld County Colorado.

## Proposed Surface Hole Data:

Latitude: N 40.089354° (BHL: 40.101054°)  
Longitude: W 105.024815° (BHL: 105.023076°)  
PDOP: 1.8

## Nearest:

Building: 573' southwest  
Building Unit: 674' southwest  
Public Road: 660' south  
Property Line: 377' northeast  
Existing Well: Ray Nelson 33-32, 371' northeast

Above Ground Utility: 619' south  
Railroad: +5,280'  
Well Window: SHL is 126' inside  
High Occupancy Building Unit: +5,280'

## Notes:

- 1) Bearings and distances based on NAD 83 Colorado North State Plane Coordinate, using RTK GPS observations taken 4/24/14 by operator Chris Bettencourt
- 2) Conversion factor to ground (1.0002793972).
- 3) Elevations based on NAVD 88 GPS heights and Geoid 2009 corrections.
- 4) See Location Drawing for visible improvements within 500 feet of Pad Site.
- 5) The surface use is a cultivated field.

NOTICE: According to Colorado law you must commence any legal action based upon any defect in this W.L.C. within three years after you first discover such defect. In no event may any action based upon any defect in this W.L.C. be commenced more than ten years from this said date of the certification shown hereon.

I hereby certify that this Well Location Certificate was prepared by me or under my direct supervision on 5/30/2014 for and on behalf of EnCana Oil & Gas (USA) Inc. That it is not a Land Survey Plat or an Improvement Survey Plat and that it is not to be relied upon for establishment of fences, buildings, or other future improvement lines.

John Robert McGee  
Well: Hwy52 4L-32H-O268 WLO