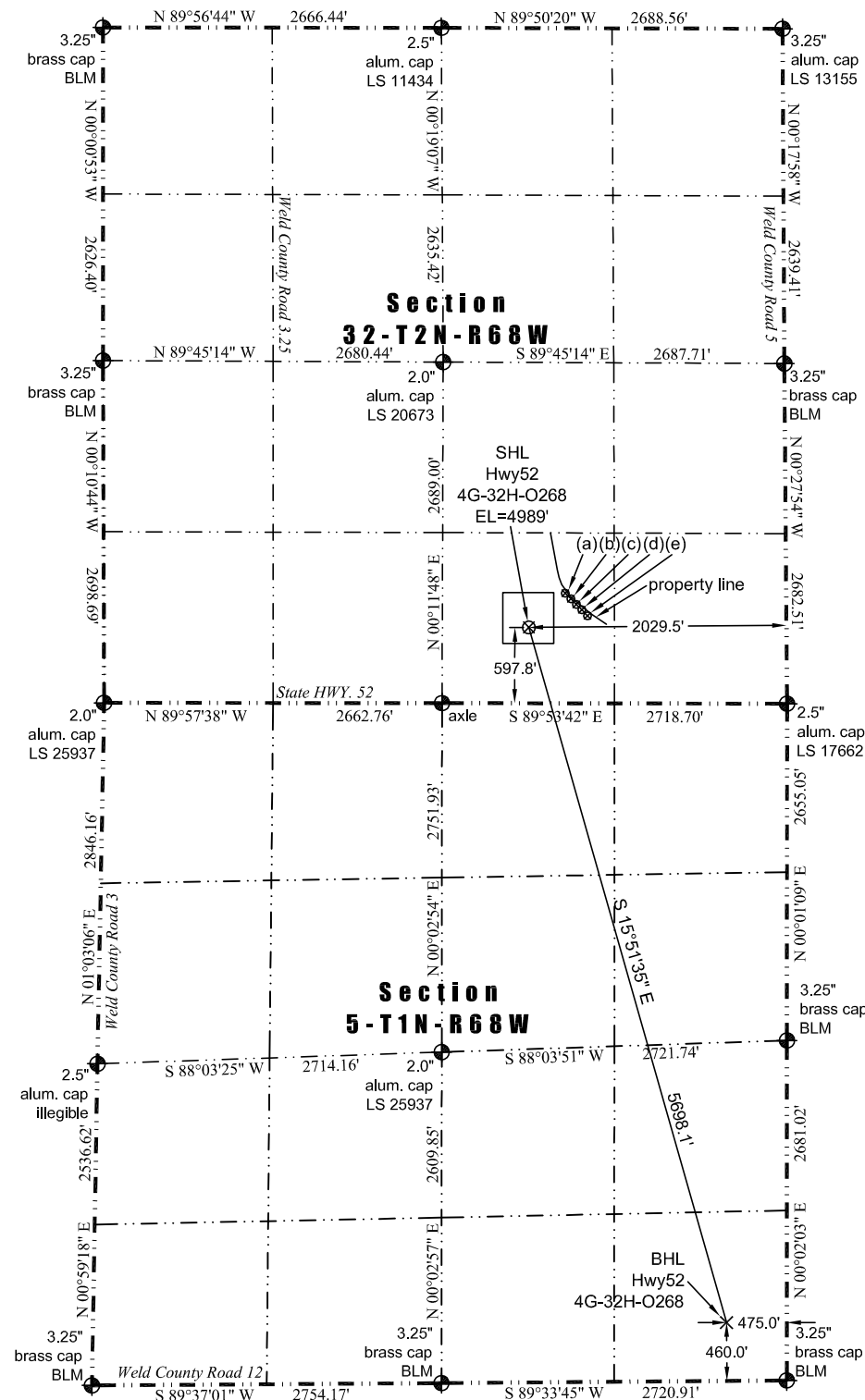




WELL LOCATION CERTIFICATE

THIS MAP DOES NOT REPRESENT A BOUNDARY SURVEY

Washburn Land Surveying
www.WashburnSurveying.com
970-232-9645



(a) Existing Well Data:
Ray Nelson 33-32
Latitude: N 40.089968°
Longitude: W 105.023758°
FSL: 823'
FEL: 1696'
ELEV: 4980'
PDOP: 2.0

(b) Existing Well Data:
Ray Nelson 34-32
Latitude: N 40.089947°
Longitude: W 105.023735°
FSL: 816'
FEL: 1689'
ELEV: 4980'
PDOP: 2.0

(c) Existing Well Data:
Ray Nelson 44-32
Latitude: N 40.089925°
Longitude: W 105.023710°
FSL: 808'
FEL: 1682'
ELEV: 4980'
PDOP: 2.0

(d) Existing Well Data:
Brown 41-5
Latitude: N 40.089904°
Longitude: W 105.023686°
FSL: 800'
FEL: 1676'
ELEV: 4980'
PDOP: 2.1

(e) Existing Well Data:
Ray Nelson 8-8-32
Latitude: N 40.089883°
Longitude: W 105.023662°
FSL: 793'
FEL: 1669'
ELEV: 4980'
PDOP: 2.0

Nearest:
Building: 540' southwest
Building Unit: 644' southwest
Above Ground Utility: 618' south
Public Road: 658' south
Railroad: +5,280'
Property Line: 406' northeast
Well Window: SHL is 126' inside
High Occupancy Building Unit: +5,280'
Existing Well: Ray Nelson 33-32,
401' northeast

Proposed Surface Hole Data:
Latitude: N 40.089355° (BHL: 40.074285°)
Longitude: W 105.024949° (BHL: 105.019490°)
PDOP: 1.8

I hereby certify that this Well Location Certificate was prepared by me or under my direct supervision on 5/30/2014 for and on behalf of EnCana Oil & Gas (USA) Inc. That it is not a Land Survey Plat or an Improvement Survey Plat and that it is not to be relied upon for establishment of fences, buildings, or other future improvement lines.

John Robert McGee LS#33219
Well: Hwy52 4G-32H-O268 WLC

- Notes:
- 1) Bearings and distances based on NAD 83 Colorado North State Plane Coordinate, using RTK GPS observations taken 4/24/14 by operator Chris Bettencourt
 - 2) Conversion factor to ground (1.0002793972).
 - 3) Elevations based on NAVD 88 GPS heights and Geoid 2009 corrections.
 - 4) See Location Drawing for visible improvements within 500 feet of Pad Site.
 - 5) The surface use is a cultivated field.

NOTICE: According to Colorado law you must commence any legal action based upon any defect in this W.L.C. within three years after you first discover such defect. In no event may any action based upon any defect in this W.L.C. be commenced more than ten years from this said date of the certification shown hereon.