

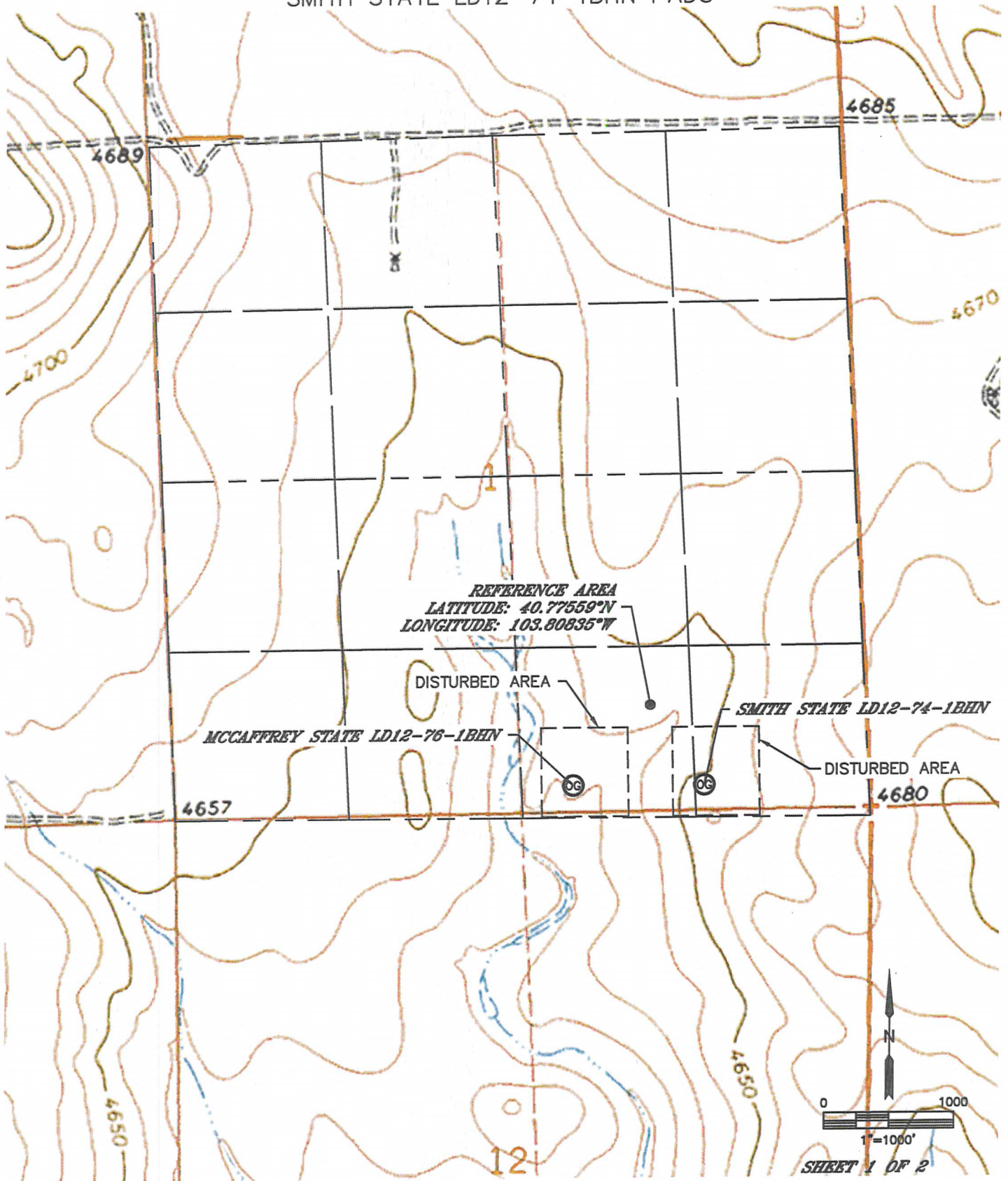


Lat40°, Inc. 1635 Foxtrail Drive, Suite 325 Loveland, CO 970-776-3321

REFERENCE AREA MAP

MCCAFFREY STATE LD12-76-1BHN,
SMITH STATE LD12-74-1BHN PADS

SECTION: 1
TOWNSHIP: 9N
RANGE: 58W



SHEET 1 OF 2

DATE: 1/4/2014
PROJECT#: 2013115