



Baker Atlas

# RESERVOIR PERFORMANCE MONITOR

|   |  |  |
|---|--|--|
| File No: CH084202   | Company Well   | WPX ENERGY<br>SAVAGE RW/ 13-25               |
| API No: 05045219830000                                      | Field County   | RULISON<br>GARFIELD State CO                 |
| 25 6S 94W<br>RW/ 23-25 PAD<br>NABORS 577                    | Location<br>SHL: 1625' FSL & 2294' FWL<br>BHL: 1809' FSL & 834' FWL<br>SEC 25 TWP 6S RGE 94W | Other Services<br>BOND LOG                   |
| Permanent Datum<br>Log Measured From<br>Drill Measured From | GL<br>KB<br>KB<br>Elevation<br>26 ft<br>Above P. D.  | Elevations<br>KB 6122 ft<br>DF<br>GL 6096 ft |

|                              |                       |            |
|------------------------------|-----------------------|------------|
| Date                         | 27/MAR/14             |            |
| Run                          | ONE                   |            |
| Service Order                | US625367              |            |
| Depth Driller                | 6748 ft               |            |
| Depth Logger                 | 6721 ft               |            |
| Bottom Logged Interval       | 6711 ft               |            |
| Top Logged Interval          | 4594 ft               |            |
| Time Started                 | 11:00                 |            |
| Time Finished                | 17:00                 |            |
| Operator Rig Time            | 6 HOURS               |            |
| Type of Fluid in Hole        | WATER                 |            |
| Fluid Density                | NA                    |            |
| Salinity                     | NA                    |            |
| Fluid Level                  | 89 ft                 |            |
| Logged Cement Top            | NA                    |            |
| Wellhead Pressure            | 0 psi                 |            |
| Maximum Hole Deviation       | NA                    |            |
| Nominal Logging Speed        | 10 fpm                |            |
| Maximum Recorded Temperature | 234 degF              |            |
| Reference Log                | BAKER HUGHES BOND LOG |            |
| Reference Log Date           | 27/MAR/14             |            |
| Equipment No.                | 4271                  | GRAND JCT. |
| Recorded By                  | NEWELL / SMITH        |            |
| Witnessed By                 | BOB CADY              |            |

- FOLD HERE

In making interpretations of logs, our employees will give the customer the benefit of their best judgement. But since all interpretations are opinions based on inferences from electrical or other measurements, we cannot, and we do not guarantee the accuracy or correctness of any interpretation. We shall not be liable or responsible for any loss, cost, damages, or expenses whatsoever incurred or sustained by the customer resulting from any interpretation made by any of our employees.

| Borehole Record |         |         |
|-----------------|---------|---------|
| Bit Size        | From    | To      |
| 13.5 In         | 0 ft    | 1130 ft |
| 8.75 In         | 1130 ft | 8752 ft |

| Casing Record |             |       |      |         |
|---------------|-------------|-------|------|---------|
| Size          | Weight      | Grade | From | To      |
| 9.625 In      |             |       | 0 ft | 1130 ft |
| 4.5 In        | 11.6 lbm/ft | 1-80  | 0 ft | 8752 ft |

|   |
|---|
| Remarks   |
| All data on this log is shifted and depth matched using the Gamma Ray curve to the Baker Hughes bond log dated 3/27/2014 at the client's request.             |
| The depth matching process creates potential for collar lengths to vary from those recorded on other cased hole wireline units without a Gamma Ray reference. |
| The amount of linear shift is 5 feet.   |

Logged In PNC-3D mode.

BHT = 234 °F

SJ = 5497'-5521'

| Equipment Data |      |         |               |               |          |
|----------------|------|---------|---------------|---------------|----------|
| Run            | Trip | Tool    | Series Number | Serial Number | Position |
| 1              | 1    | PCM     | 8250EA        | 10397894      | FREE     |
| 1              | 1    | TEL/CCL | 8248ED        | 10296408      | FREE     |
| 1              | 1    | GR      | 2812LA        | 10274382      | FREE     |
| 1              | 1    | RPM     | 8281EA        | 10169250      | FREE     |
| 1              | 1    | RPM     | 8283PA        | 10169251      | FREE     |
| 1              | 1    | RPM     | 8281FA        | 10191667      | FREE     |
| 1              | 1    | TEMP    | 8255XA        | 11774568      | FREE     |

*MAIN SECTION*  
*PNC 3-D MODE*

| SPL PROCESSING   |                          |                |       |          |          |
|------------------|--------------------------|----------------|-------|----------|----------|
| MEASUREMENT TYPE | PARAMETER                | VALUE          | UNITS | TOP      | BOTTOM   |
| PNC Porosity     | Borehole                 | Cased          |       | 4559.000 | 8715.000 |
| PNC Porosity     | Borehole Size            | 8.750          | inch  | 4559.000 | 8715.000 |
| PNC Porosity     | Casing Size              | 4.500          | inch  | 4559.000 | 8715.000 |
| PNC Porosity     | Gas Filled               | Non Gas Filled |       | 4559.000 | 8715.000 |
| PNC Porosity     | Matrix                   | Sandstone      |       | 4559.000 | 8715.000 |
| TPS Pressure     | Temperature Corr. Source | Fixed (72.00)  | degF  | 4559.000 | 8715.000 |

| DEPTH OFFSETS         |              |                 |
|-----------------------|--------------|-----------------|
| (for Acquired Curves) |              |                 |
| SERIES                | DEPTH OFFSET | ACQUIRED CURVES |
| 8248ED                | -26.519      | FLTM            |
| 8248ED                | -24.519      | CCL CHV         |
| 2812LA                | 21.000       | GR              |

|        |         |         |         |        |        |        |         |
|--------|---------|---------|---------|--------|--------|--------|---------|
| 2812LA | -21.969 | GR      |         |        |        |        |         |
| 8281XA | -12.702 | HVC3Q0  | SEQ3    | AMA3   | AML3   | BKX    | CXS     |
|        |         | CPT3Q0  | CPT3Q2  | CPT3Q3 | CPT3Q4 | ET3    | IXS     |
|        |         | MCS3    | MCS3Q0  | QCAL3  | RGN3   | RICX   | SDA3    |
|        |         | SDL3    | SGA3    | SGL3   | STA3   | XS     | ASPEC3  |
|        |         | AMB3    | AMF3    | CHF3   | IXSC   | IXSN   | RAT023  |
|        |         | RICXC   | RIN13C  | RIN23  | RIN23C | SD3D   | SG3D    |
|        |         | SGB3    | SGF3    | WDTH3  | CXSR   | IXSR   | XSR     |
|        |         | RICXR   |         |        |        |        |         |
| 8281XA | -12.291 | HVC2Q0  | SEQ2    | AMA2   | AMB2   | AMF2   | AML2    |
|        |         | BKL     | CHF2    | CLS    | CPT2Q0 | CPT2Q2 | CPT2Q3  |
|        |         | CPT2Q4  | ET2     | ILS    | LS     | MCS2   | MCS2Q0  |
|        |         | QCAL2   | RGN2    | RICL   | RONE23 | RTW023 | SDA2    |
|        |         | SDL2    | SGA2    | SGB2   | SGF2   | SGK2   | SGL2    |
|        |         | STA2    | ASPEC2  | ILSC   | ILSN   | WDTH2  | RICLC   |
|        |         | CLSR    | ILSR    | LSR    | RICLR  |        |         |
| 8281XA | -12.041 | CPRS    | HVC1Q0  | MV     | SEQ    | SEQ1   | AMA1    |
|        |         | AMB1    | AME1    | AMF1   | AML1   | BKS    | CHF1    |
|        |         | CSS     | CORB    | CORF   | CPT1Q0 | CPT1Q2 | CPT1Q2A |
|        |         | CPT1Q2B | CPT1Q2C | CPT1Q3 | CPT1Q4 | CPT1Q5 | ET1     |
|        |         | G1      | G2      | GE1S   | GE2S   | ISS    | MCS1    |
|        |         | MCS1Q0  | QA1     | QCAL1  | QM1    | RAT0   | RAT013  |
|        |         | RBOR    | RGN1    | RICS   | RIN    | RONE   | RPOR    |
|        |         | RTW0    | RIN13   | RONE13 | RTW013 | SALB   | SC1     |
|        |         | SDA1    | SDL1    | SGA1   | SGB1   | SGBC   | SGE1    |
|        |         | SGF1    | SGFC    | SGK1   | SGL1   | SS     | SS2     |
|        |         | STA1    | PD1S    | PD2S   | PD3S   | MD1S   | MD2S    |
|        |         | MD3S    | DG1S    | DG2S   | DG3S   | PD1M   | PD2M    |
|        |         | PD3M    | MD1M    | MD2M   | MD3M   | DG1M   | DG2M    |
|        |         | DG3M    | MVS     | MA     | MVM    | FILV   | IAM     |
|        |         | TA      | PVM     | PVS    | IAS    | SSTAT  | QPD1    |
|        |         | QPD2    | QPD3    | QMD1   | QMD2   | QMD3   | QDG1    |
|        |         | QDG2    | QDG3    | QMA    | QTA    | QFILV  | QMV     |
|        |         | QPV     | QIA     | DERR   | DCNT   | QPK1   | QSA1    |
|        |         | PKS1    | ASPEC1  | HOC    | FE2XC  | ISSC   | RINC    |
|        |         | ISSN    | RDEN    | WDTH1  | RICSC  | CSSR   | G1R     |
|        |         | G2R     | ISSR    | SSR    | SS2R   | RATOR  | RAT013R |
|        |         | RBORR   | RICSR   | RINR   | RIN13R | RONER  | RPORR   |
|        |         | RTWOR   |         |        |        |        |         |
| 8255XA | -0.792  | PTFS    | PTMS    |        |        |        |         |
| 8255XA | -0.775  | SPF1    | SPFQ    | TSCP   | TSDP   |        |         |
| 8255XA | 0.000   | DTEM    | TEMP    | TNF    |        |        |         |
| SYSTEM | 0.000   | TEN     | TTEN    |        |        |        |         |

Created by : RPM9, v5.3.1.0

Plotted by : PlotMgr, v5.4.504

Company : WPX ENERGY

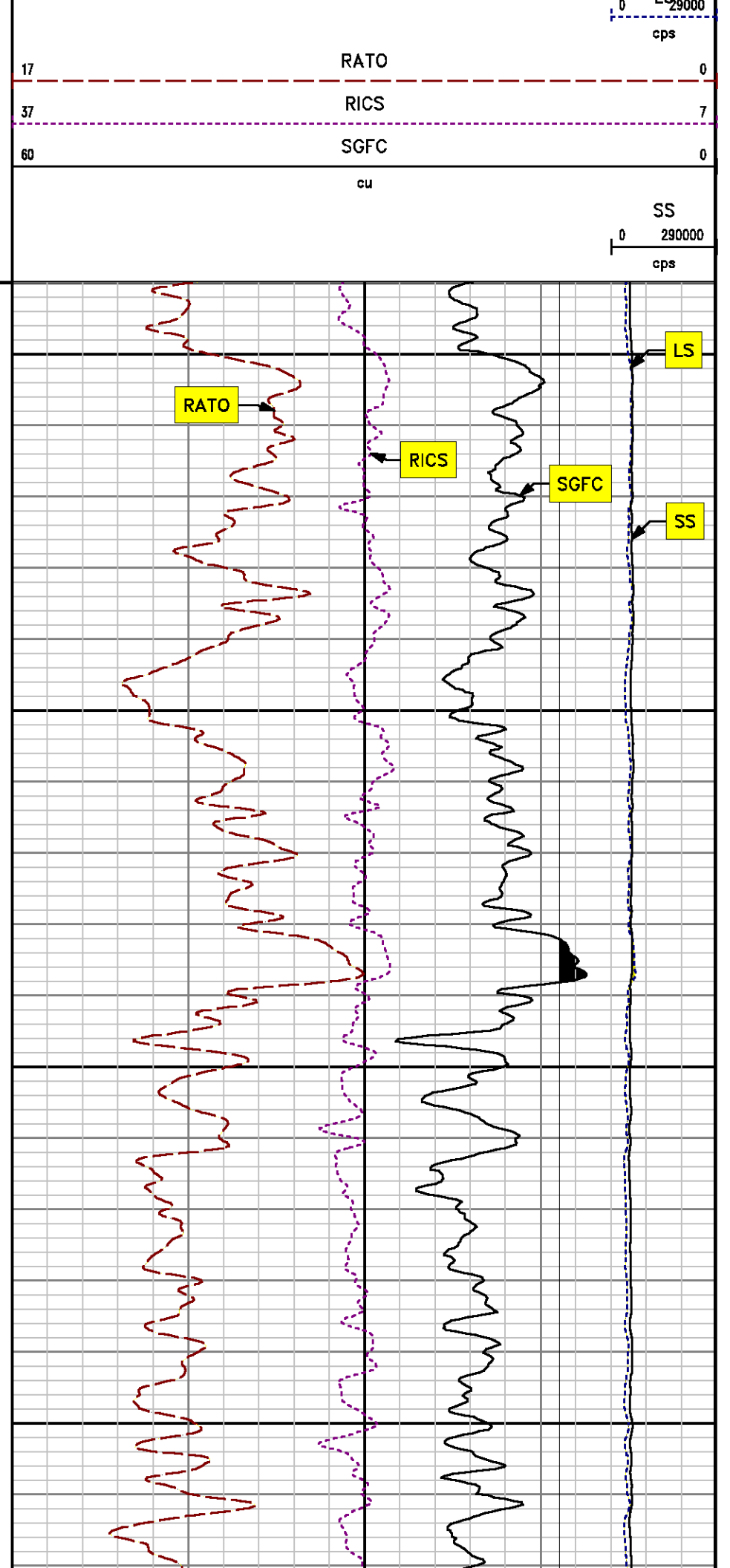
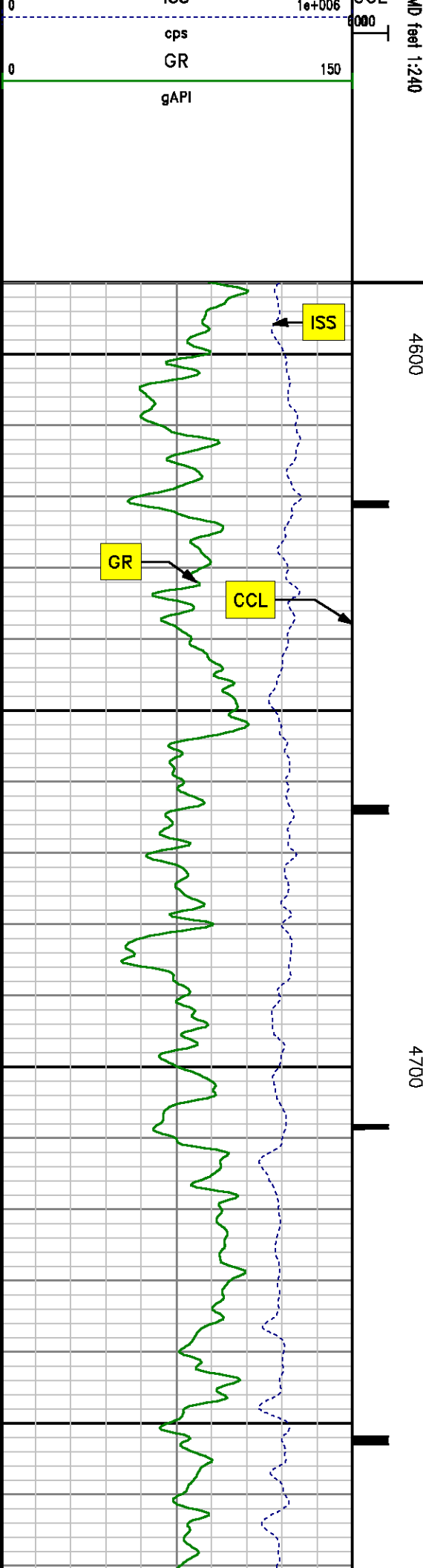
Well : SAVAGE RWF 13-25

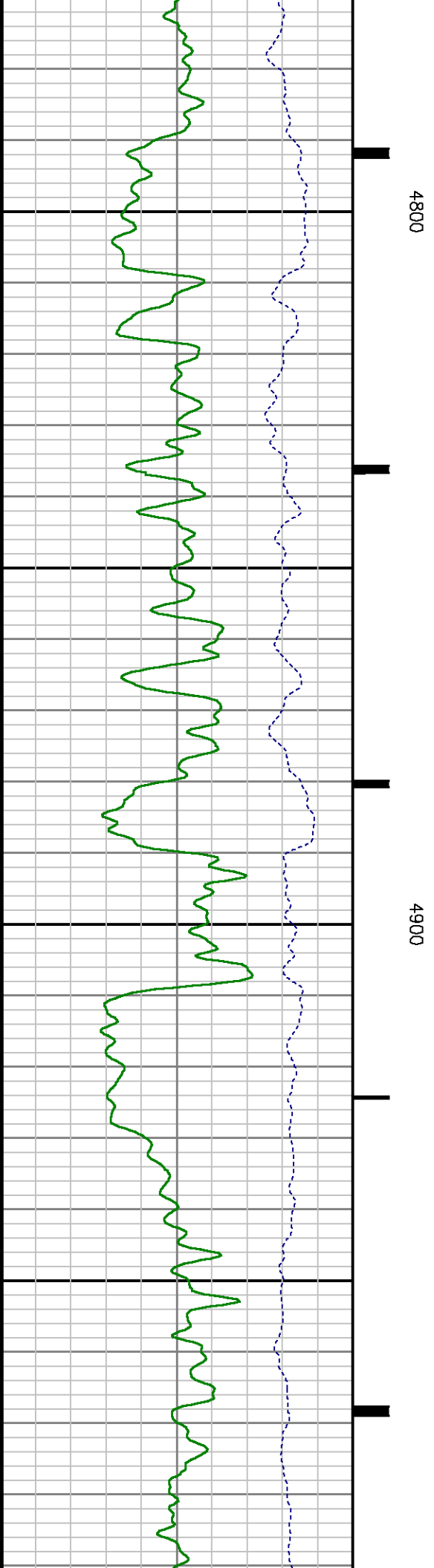
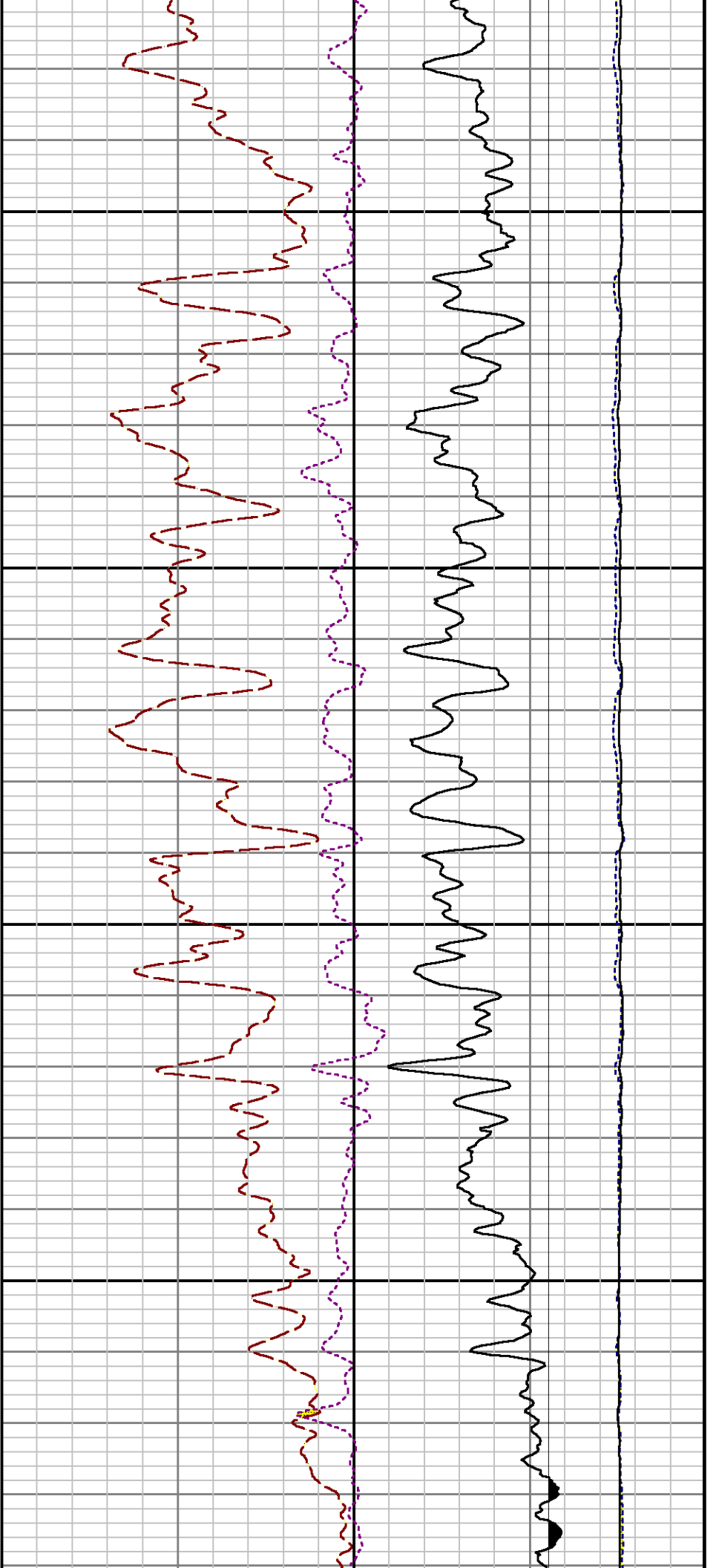
File Name : d:\welldata\wpx\savage rwf 13-25\13rpm\main.xtf

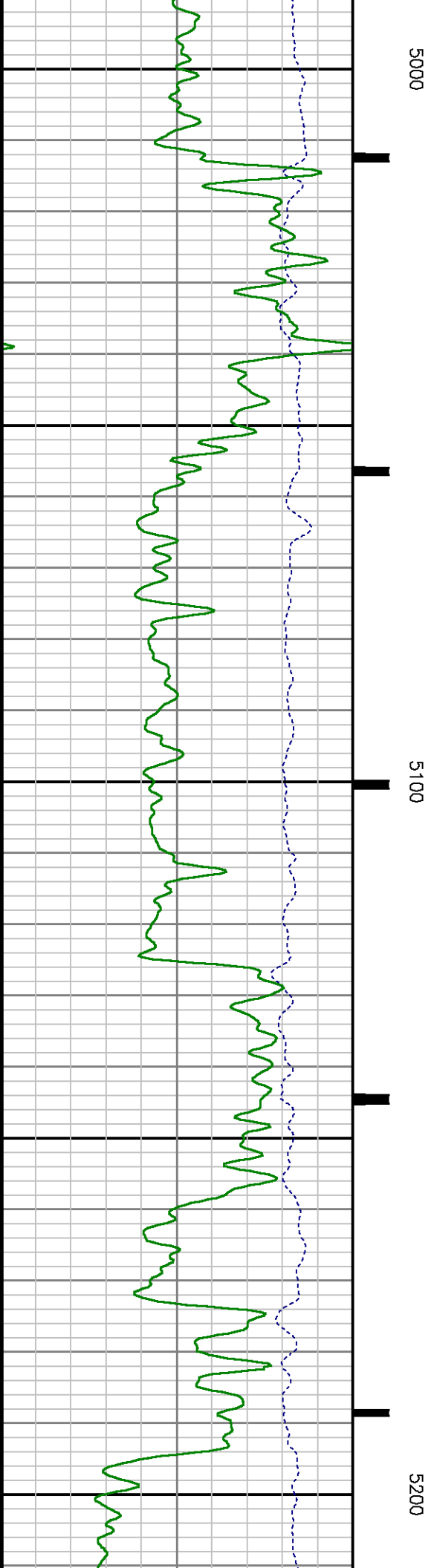
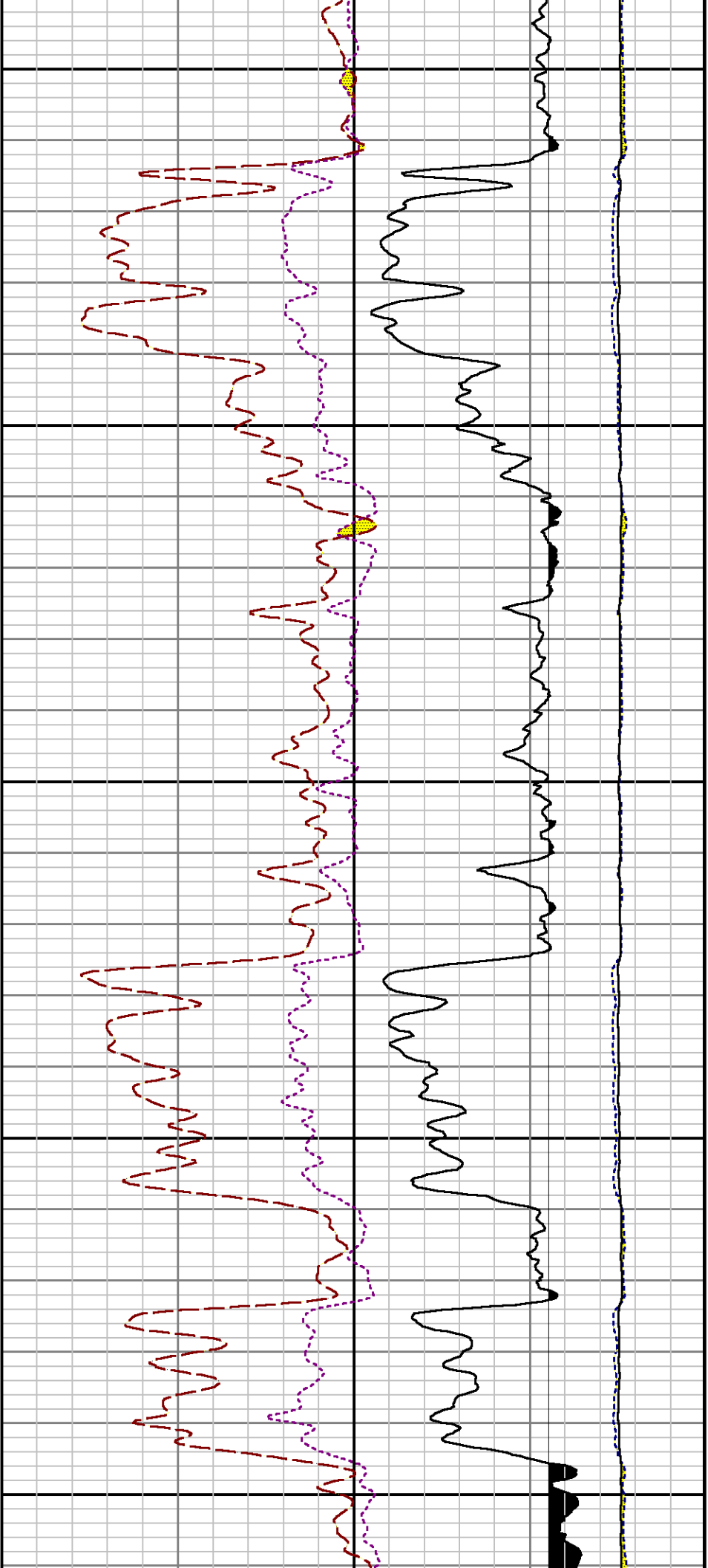
Mode : PlotMgr 5.4.504

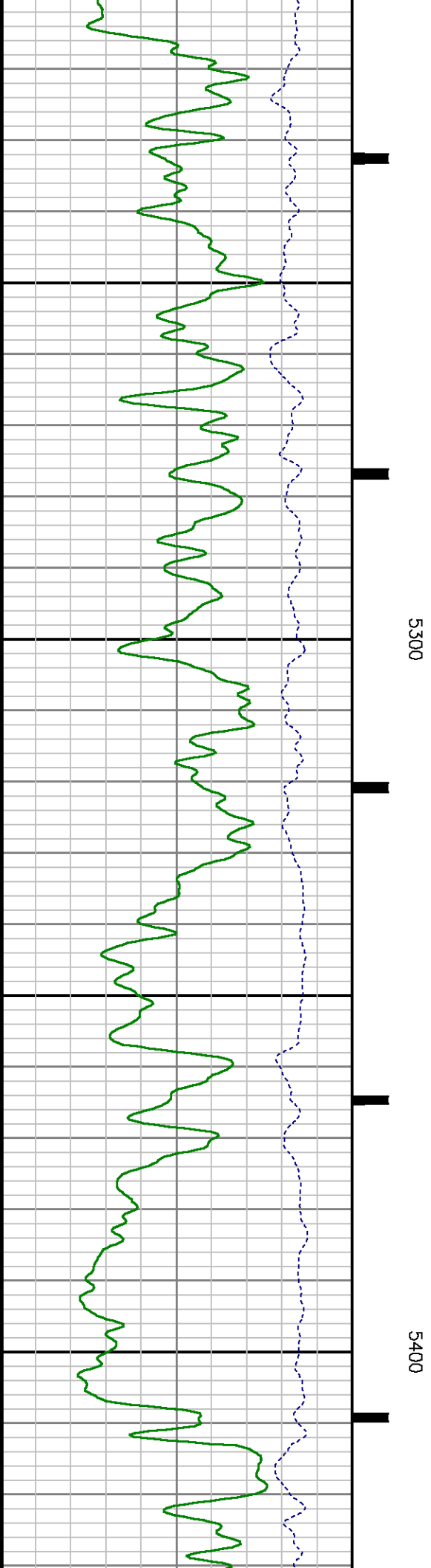
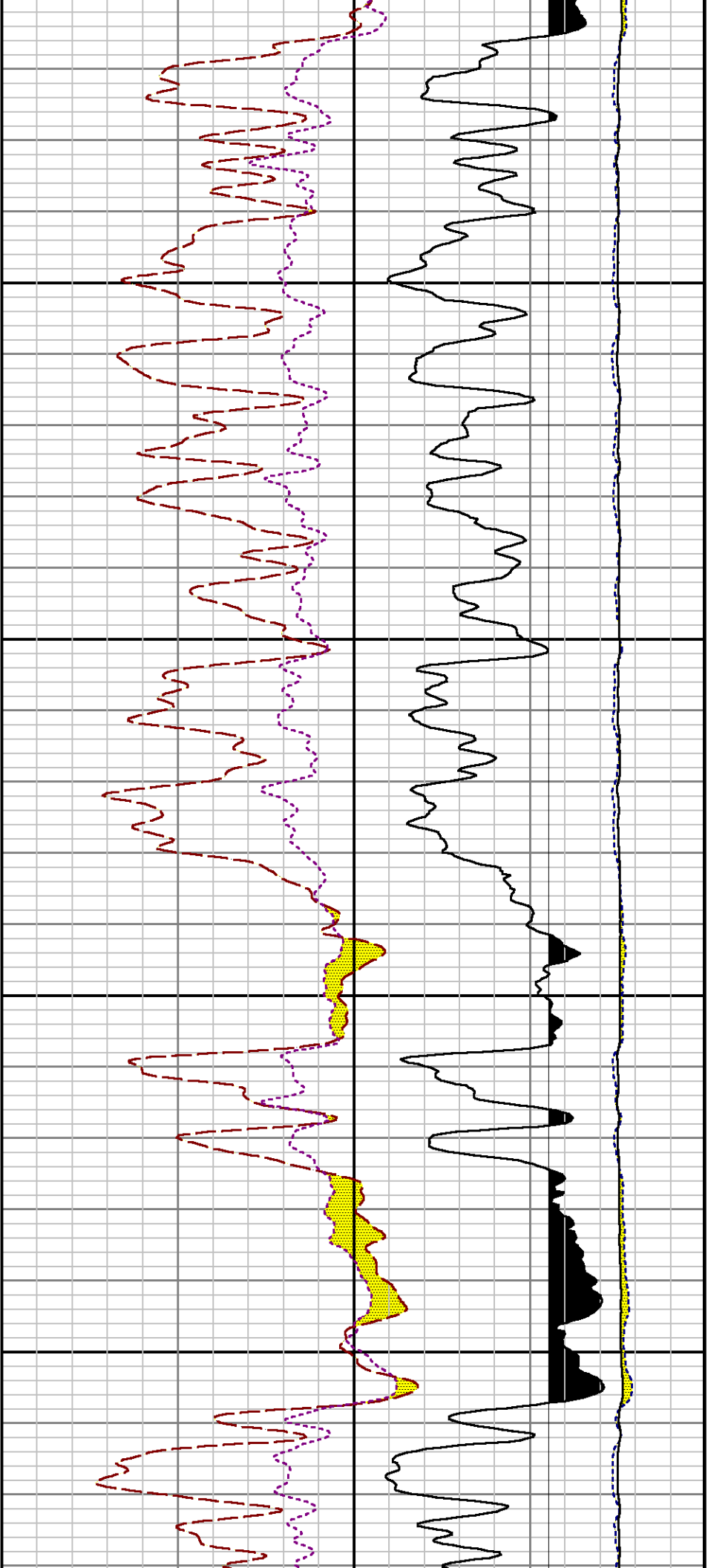
Interval : 4590.00 - 8726.00 feet UP

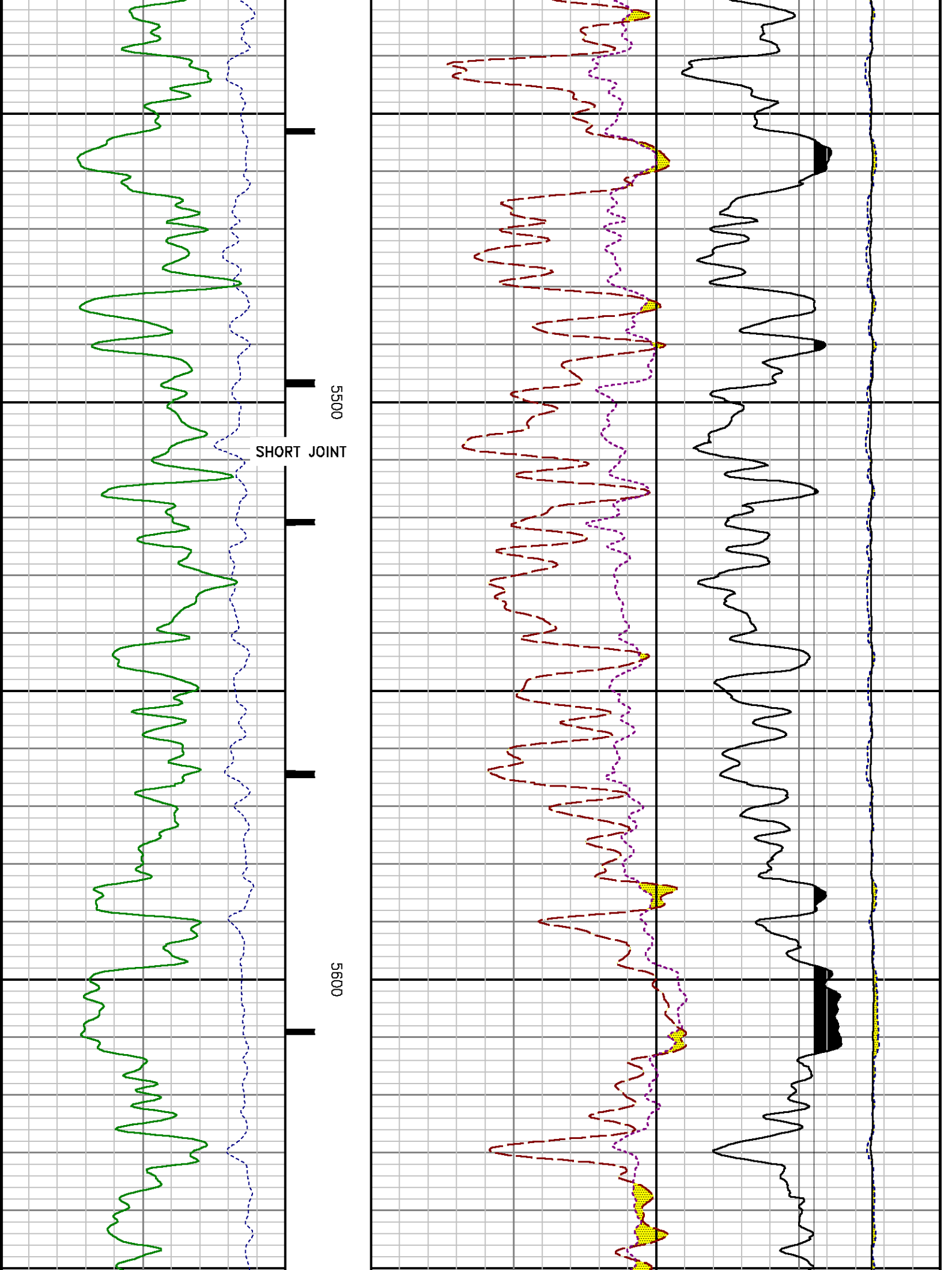
Created : 3/27/2014 4:28:35 PM



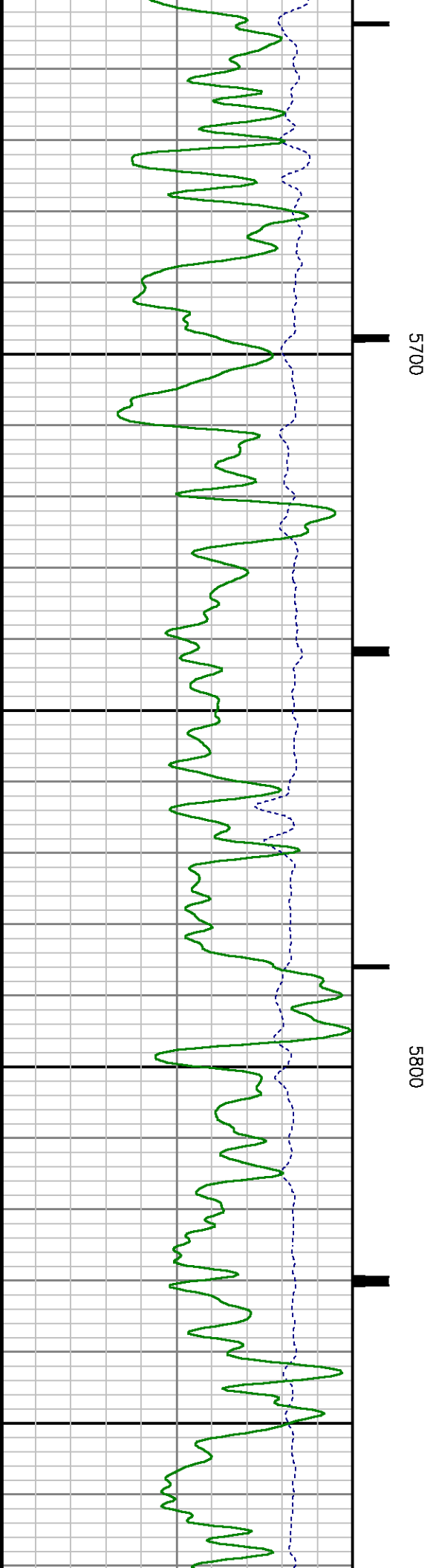
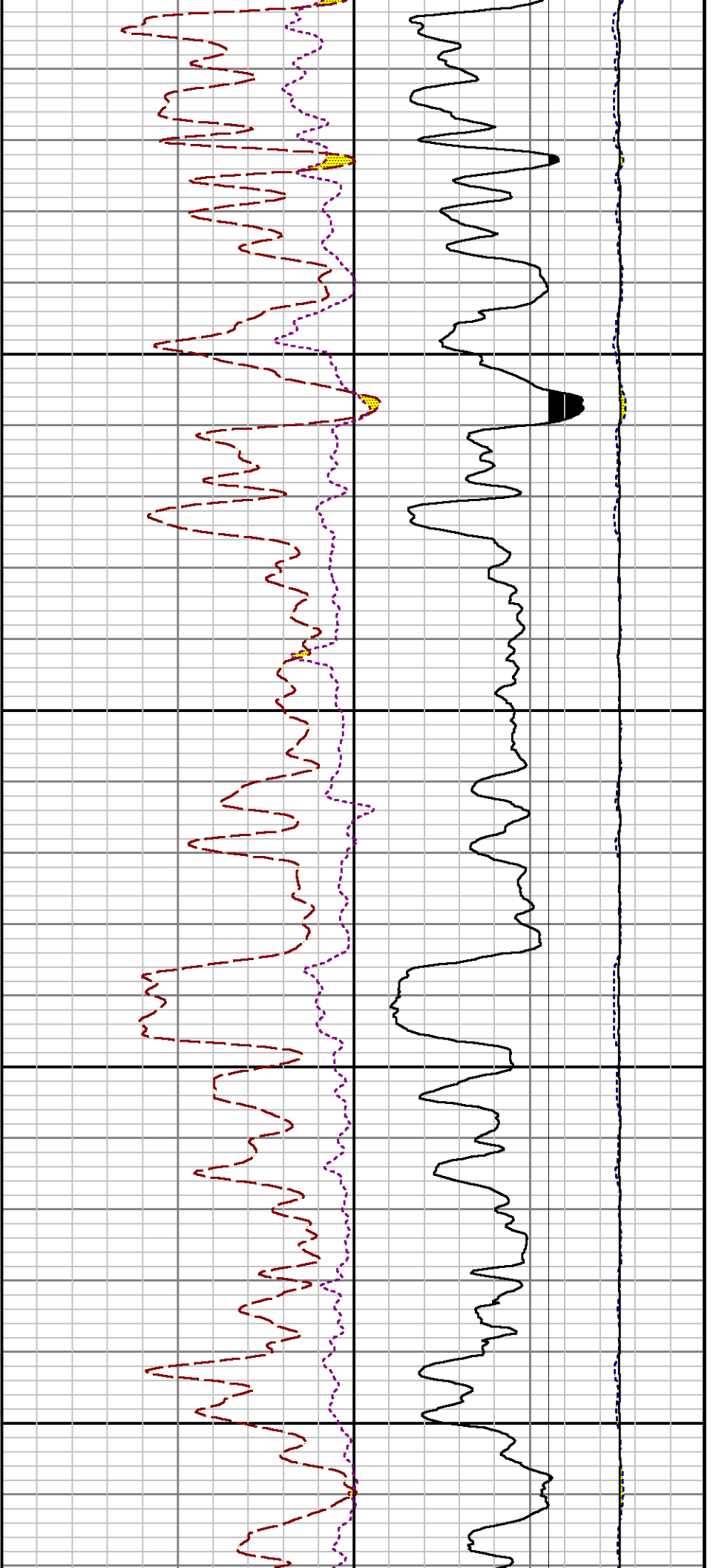


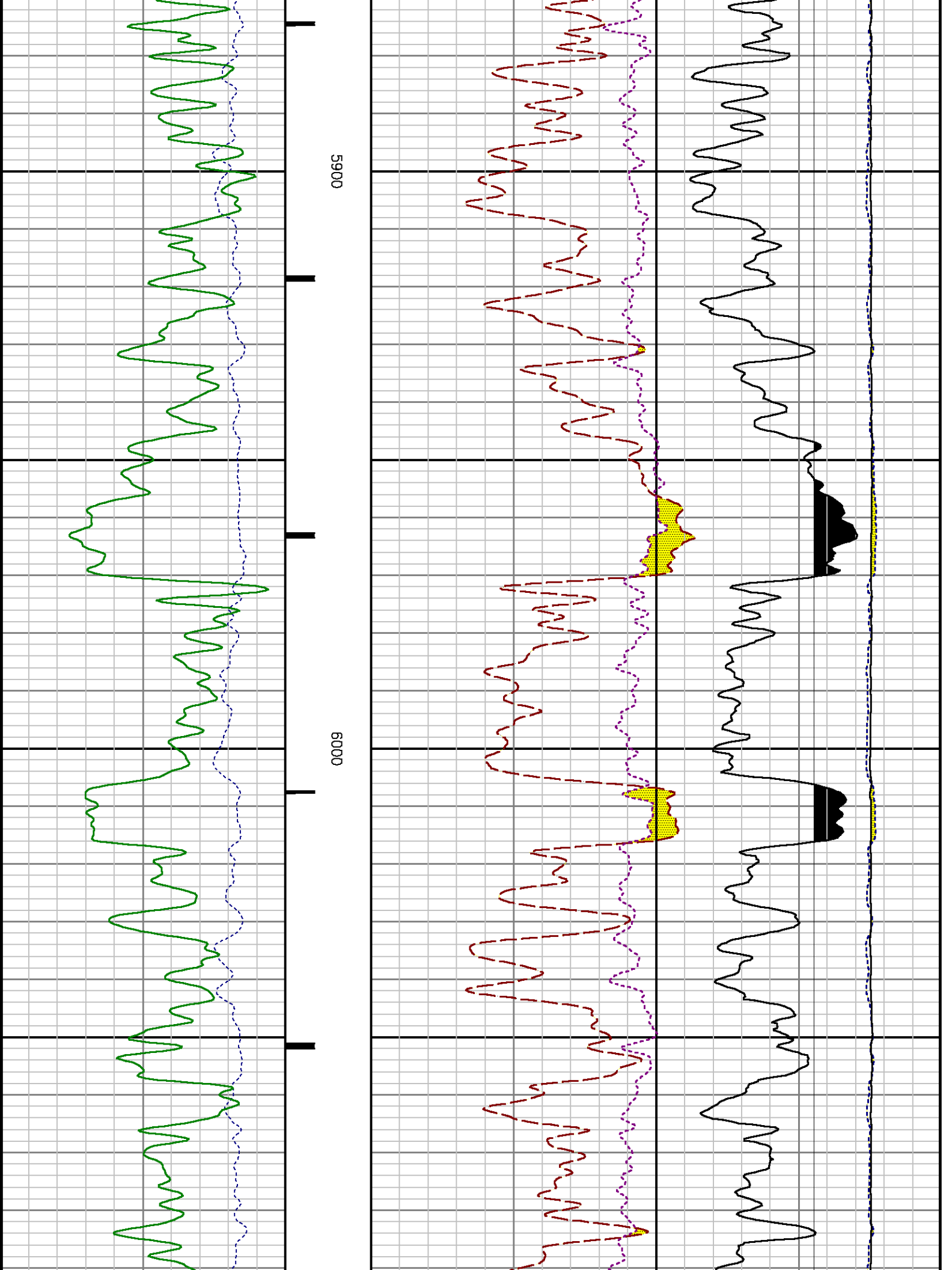


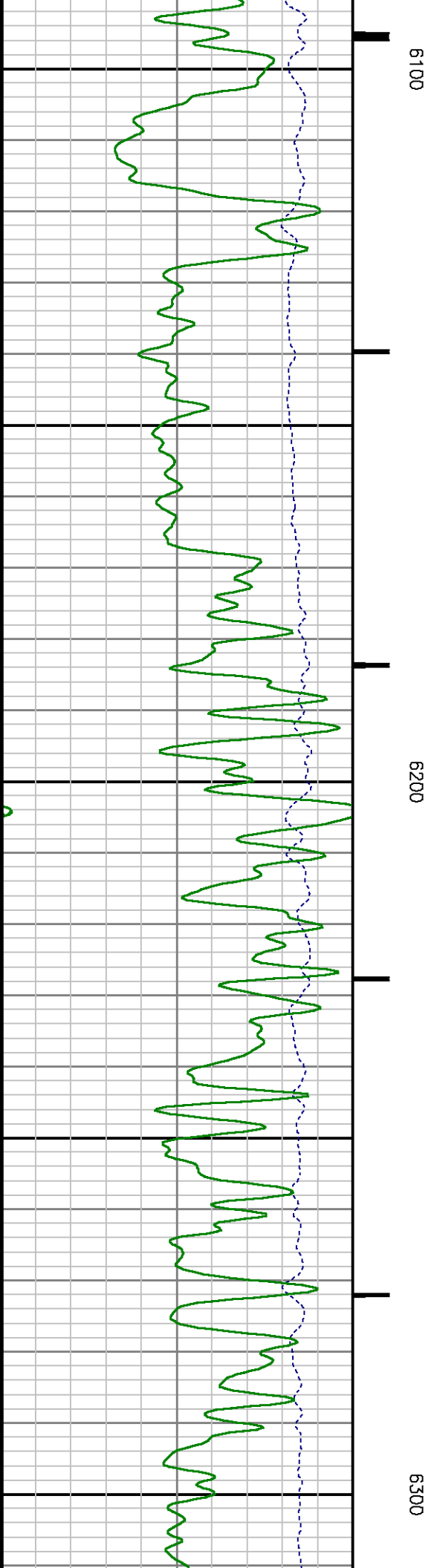
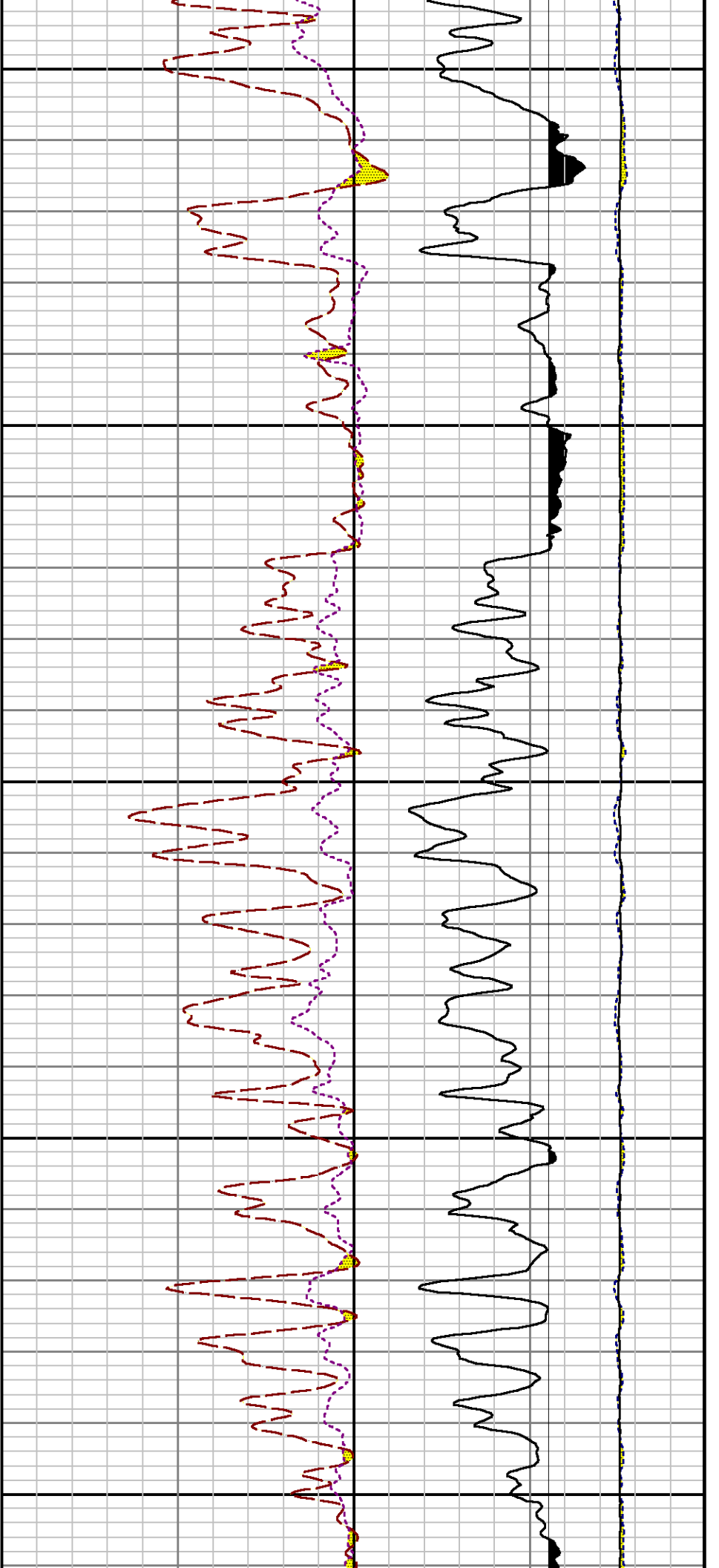


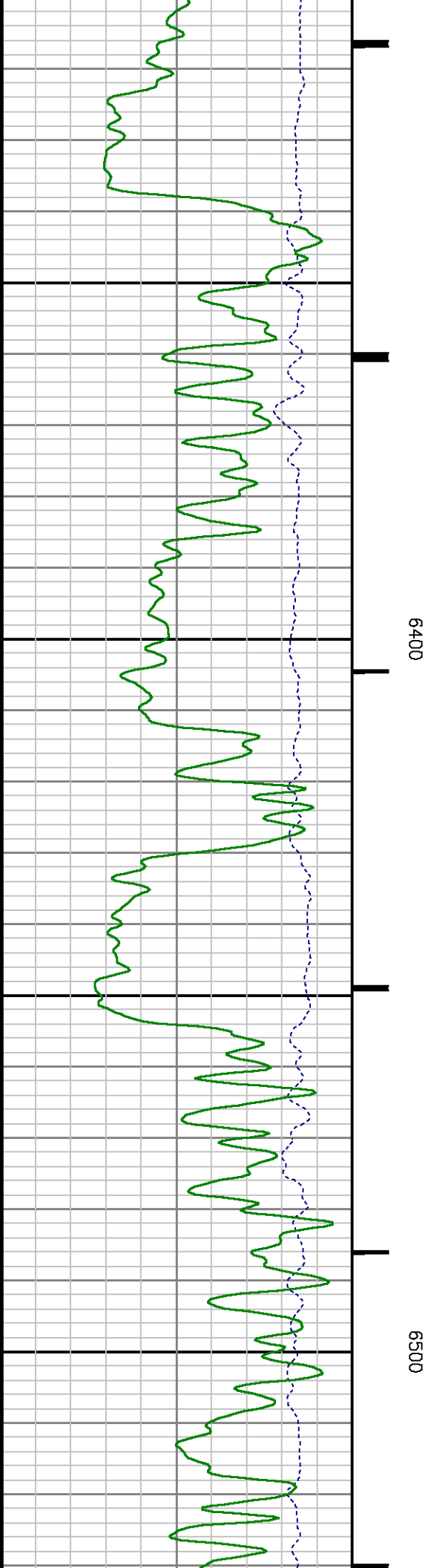
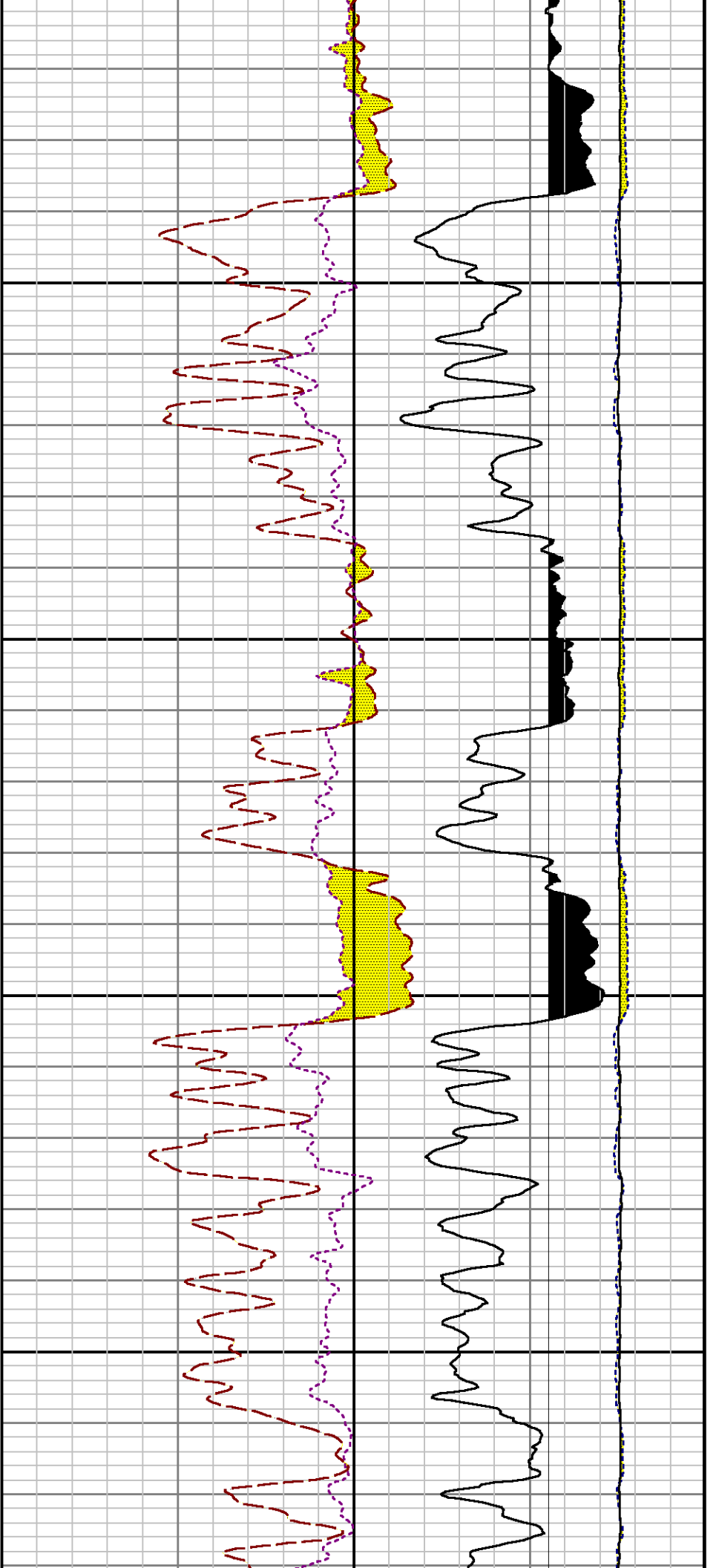


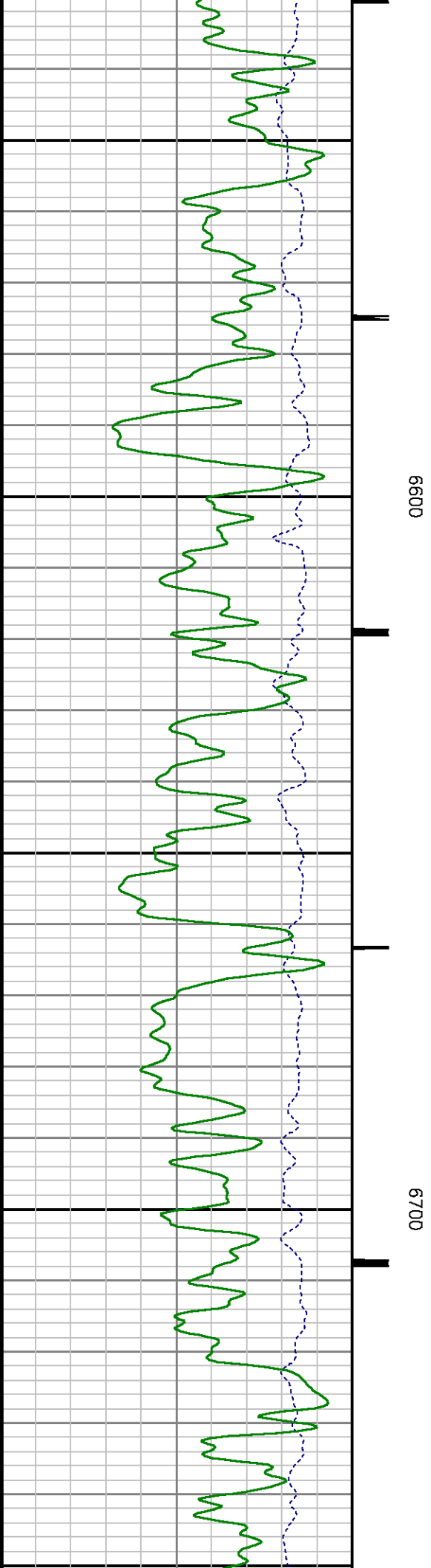
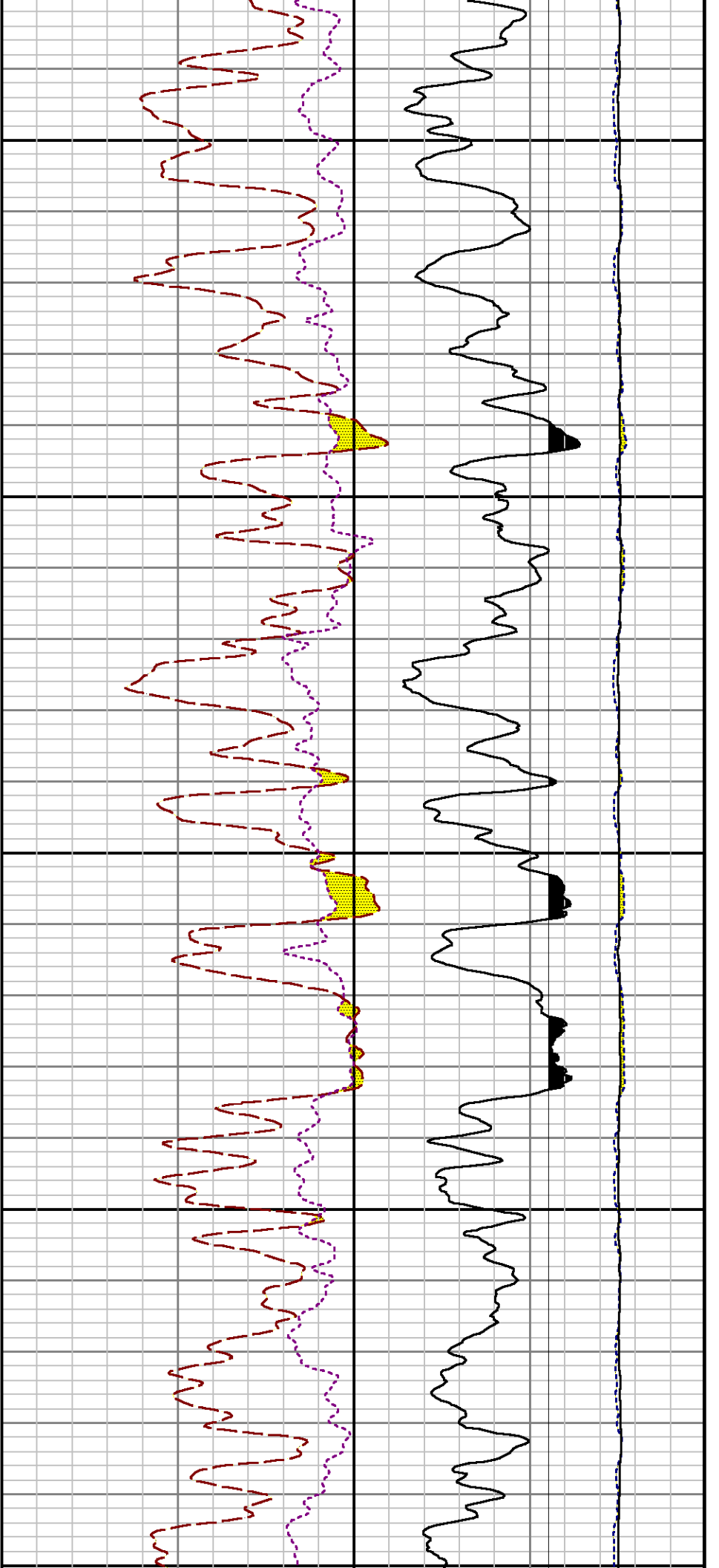


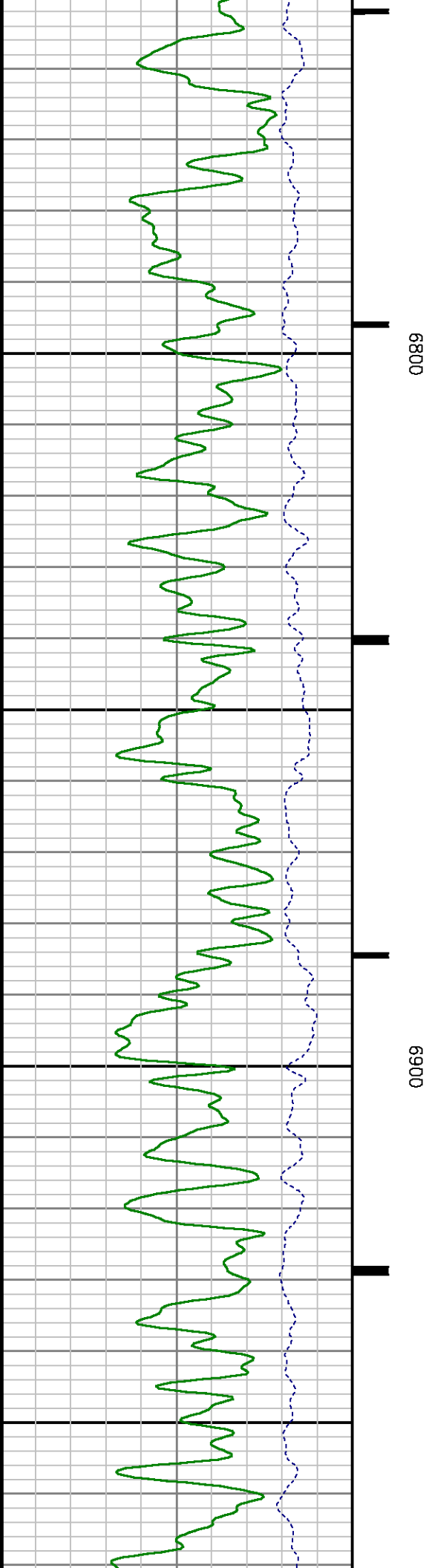
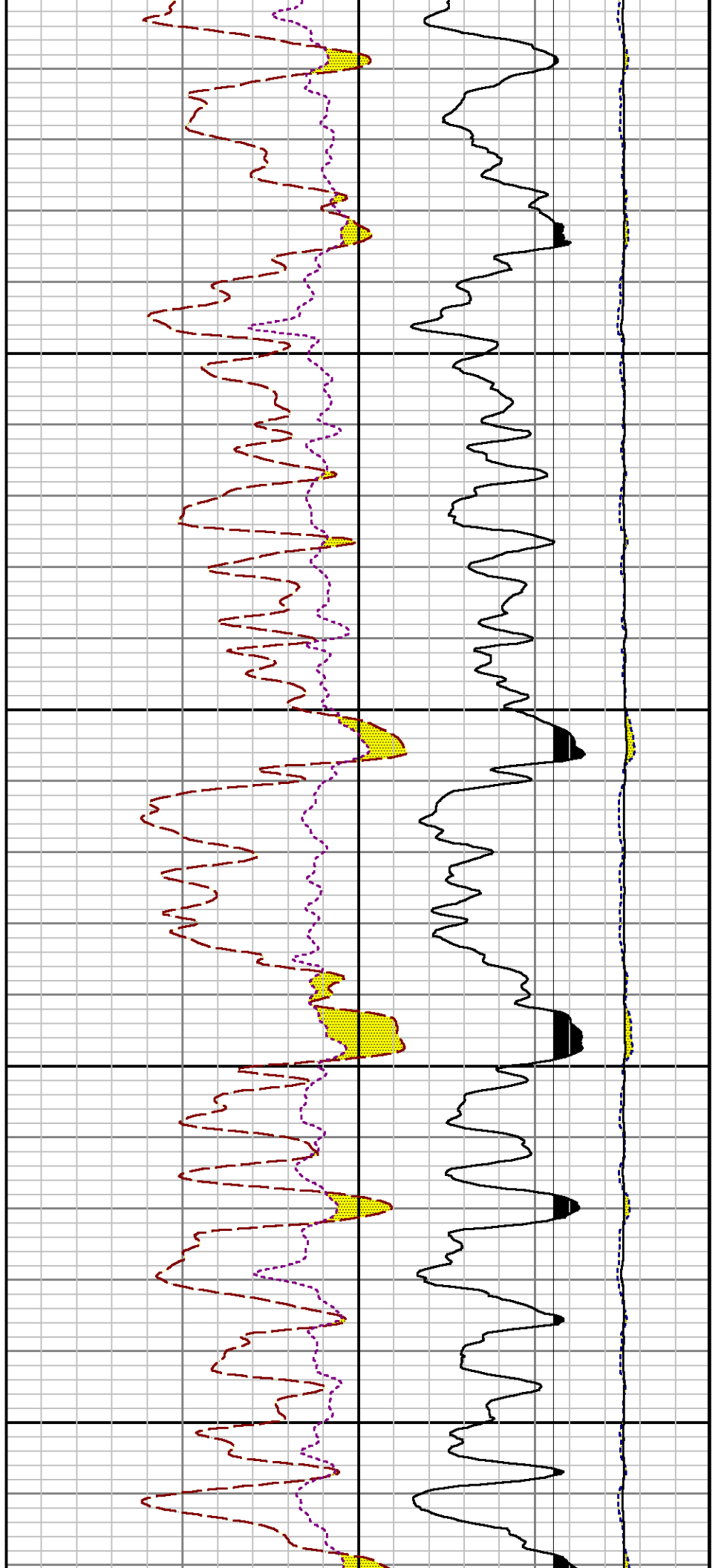


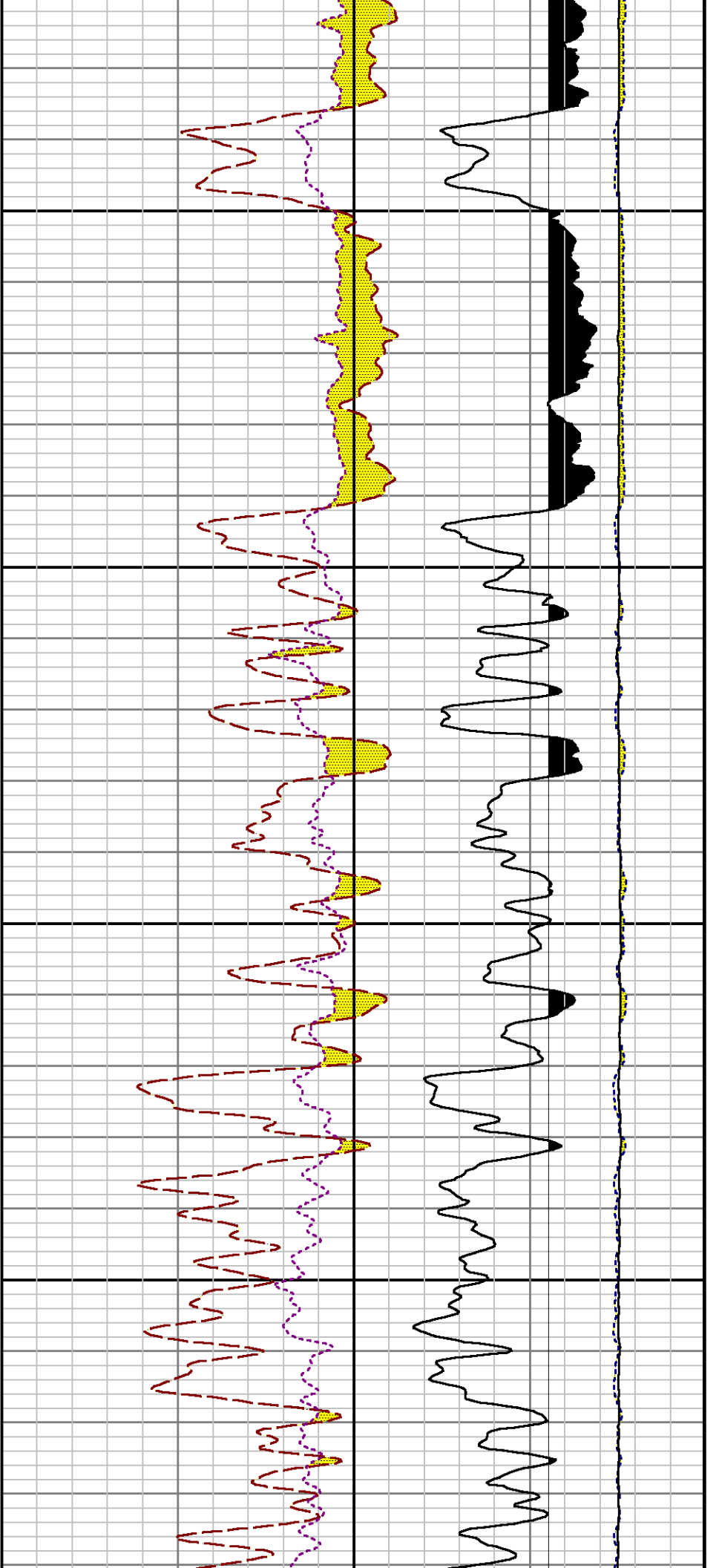






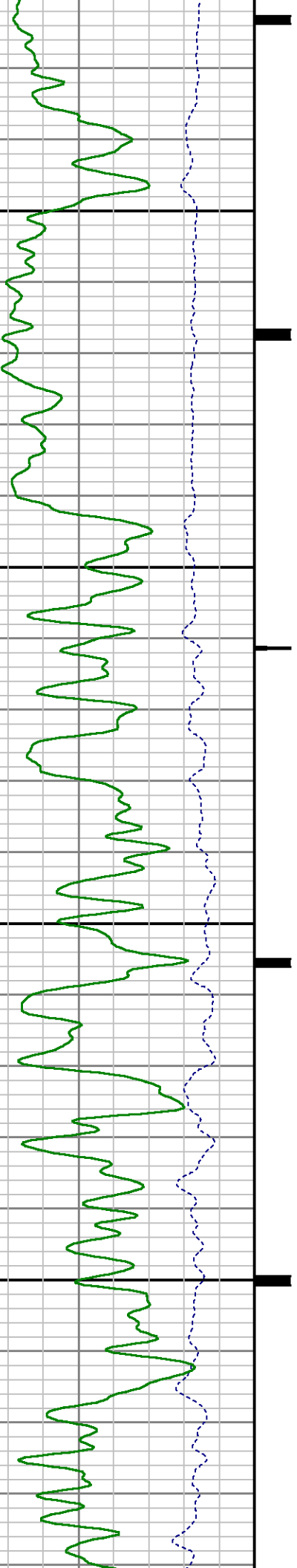


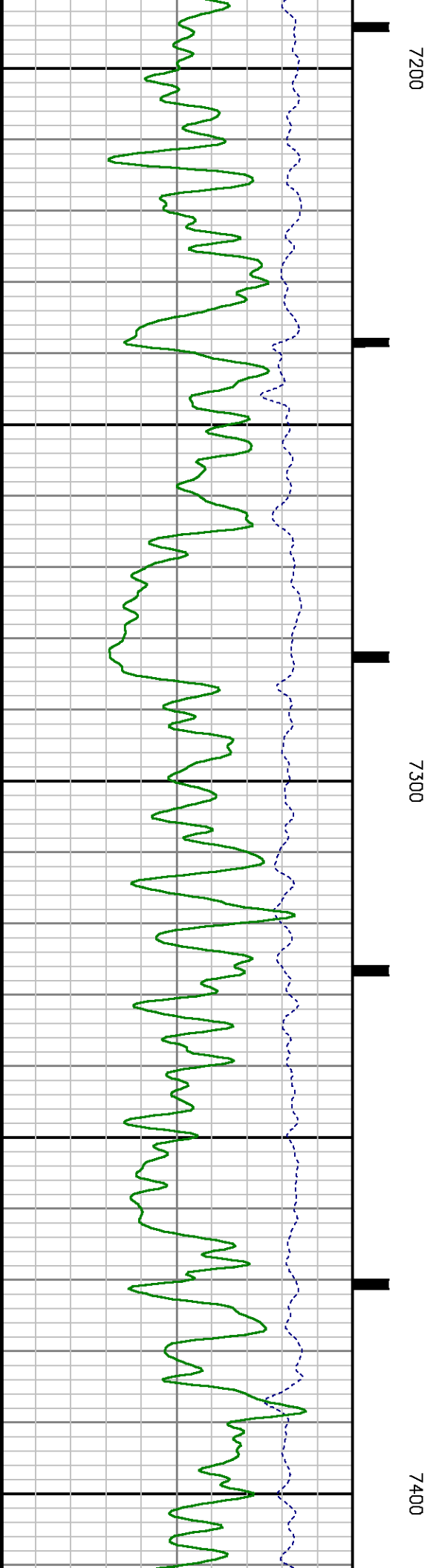
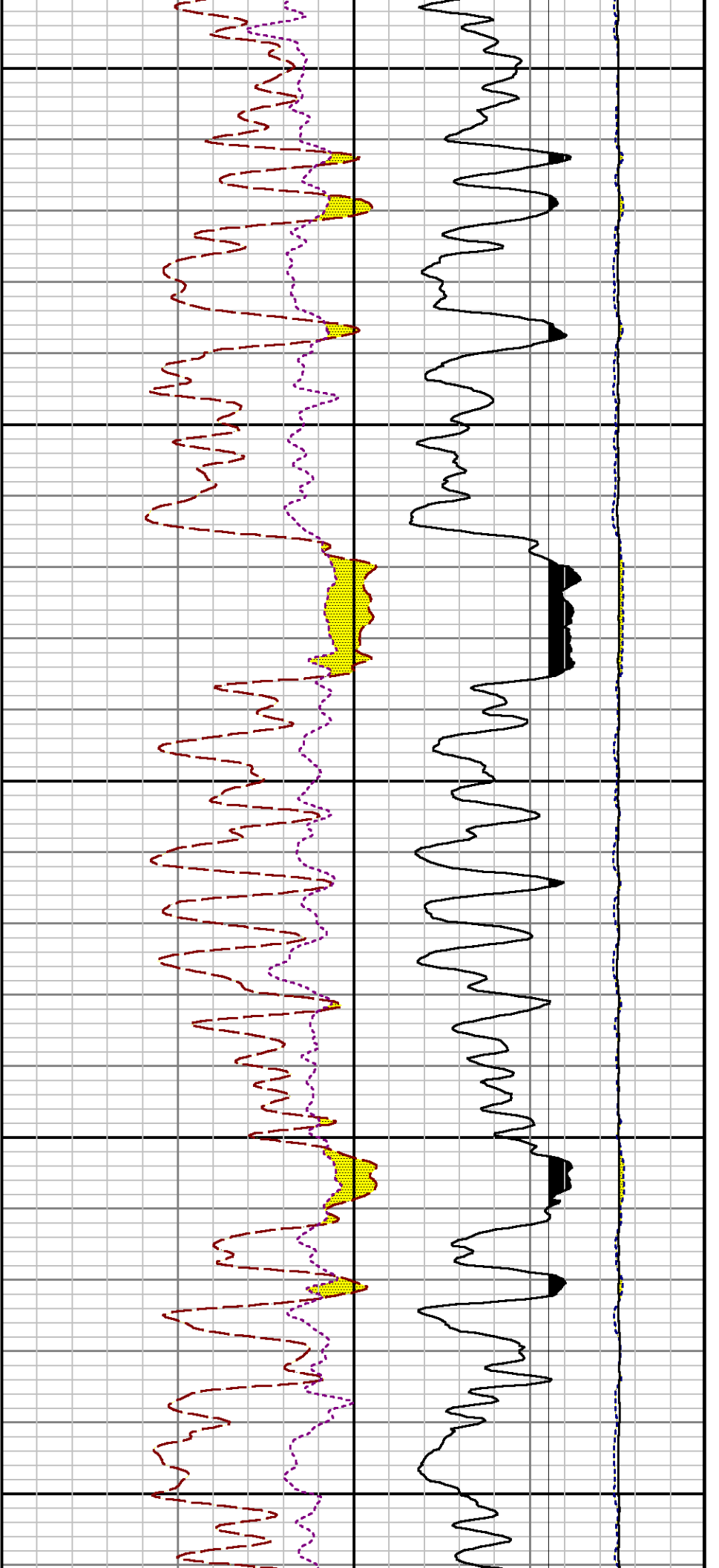




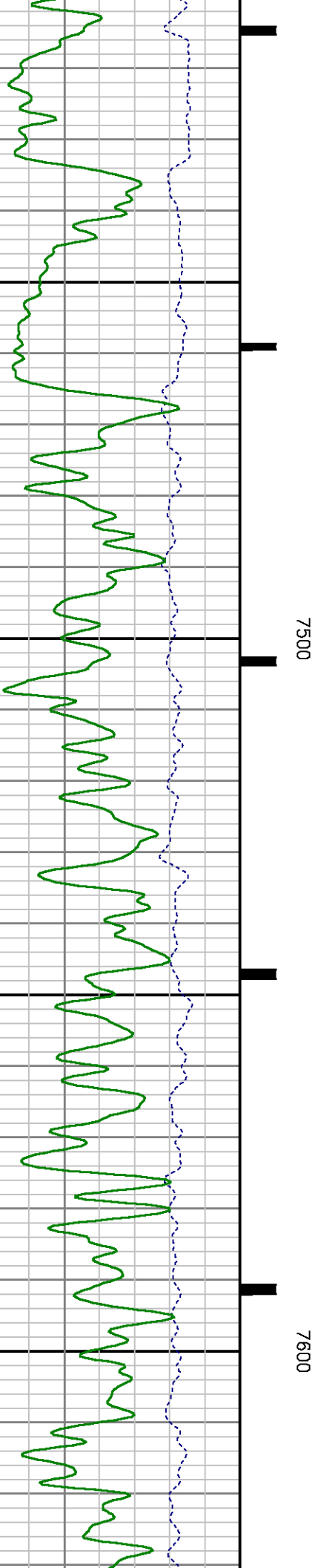
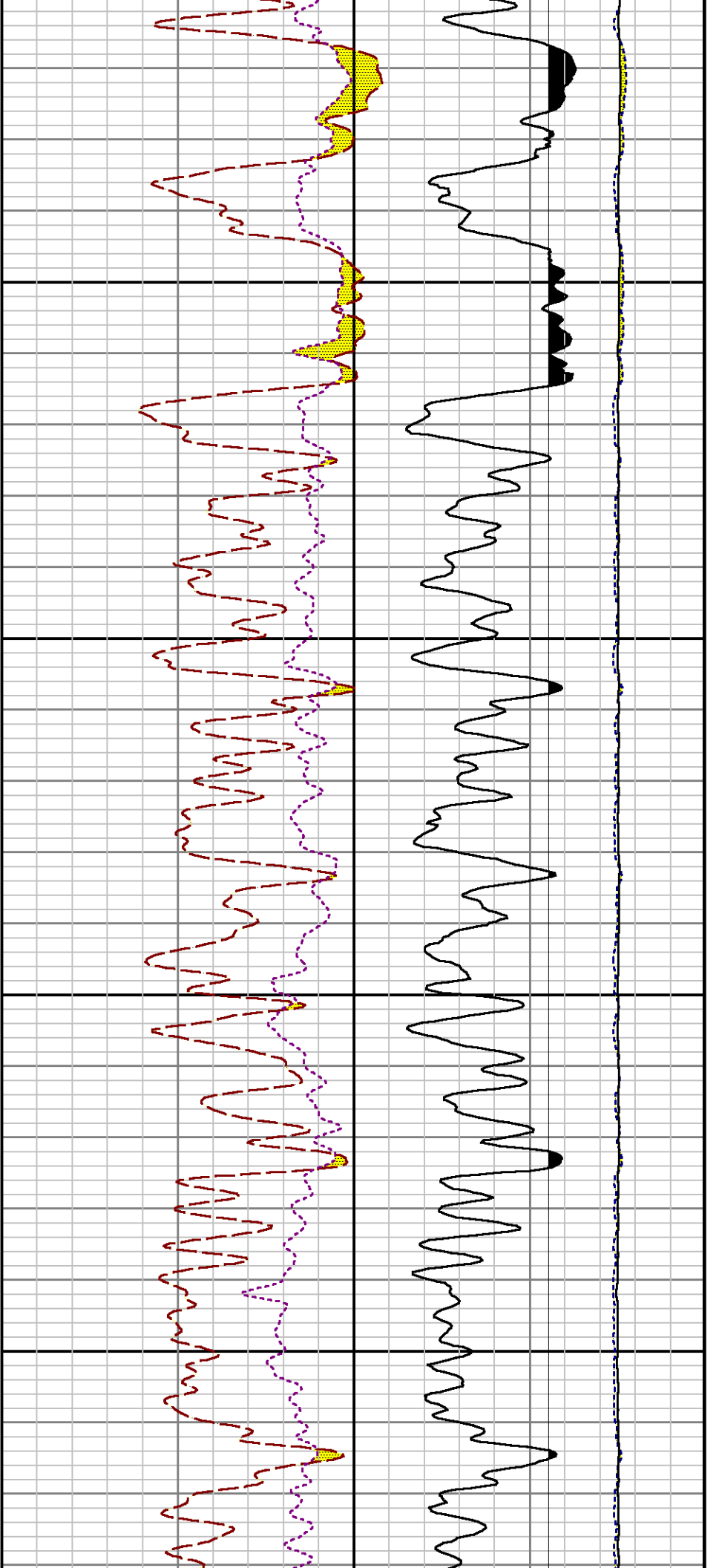
7000

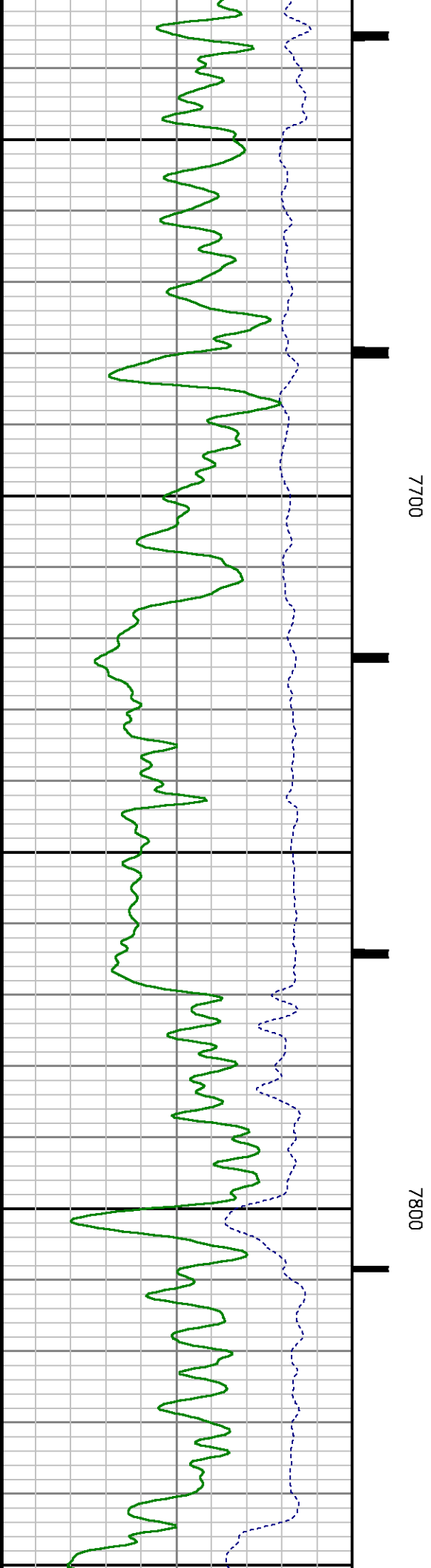
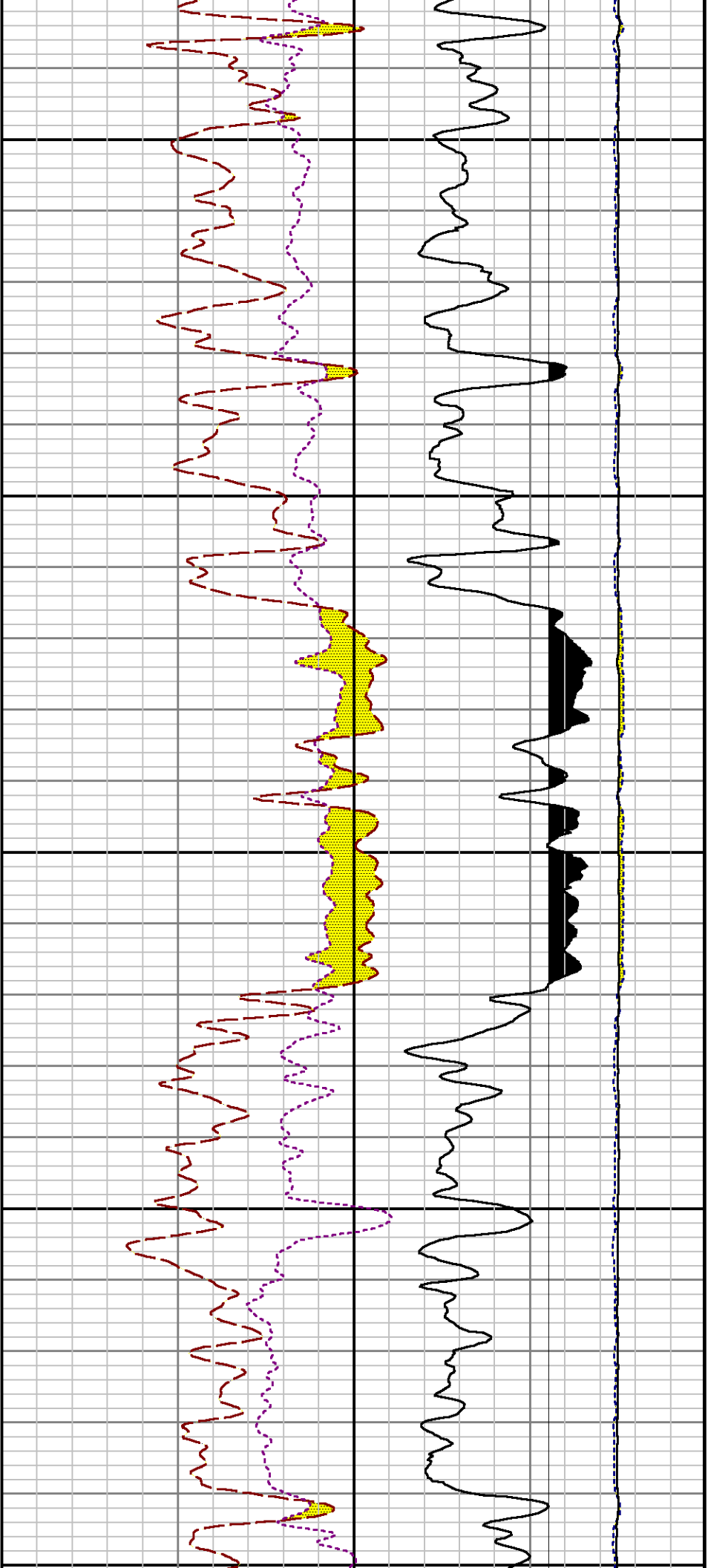
7100

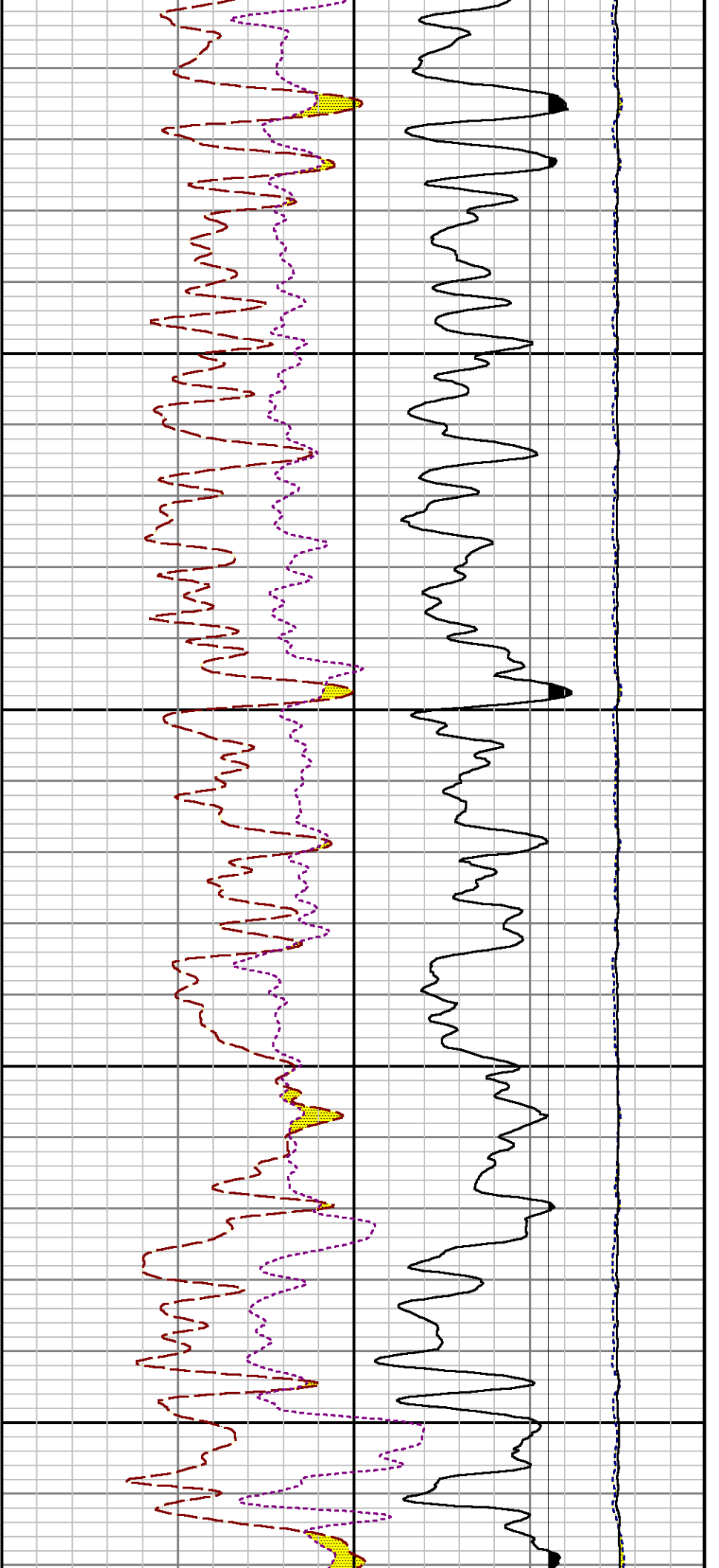






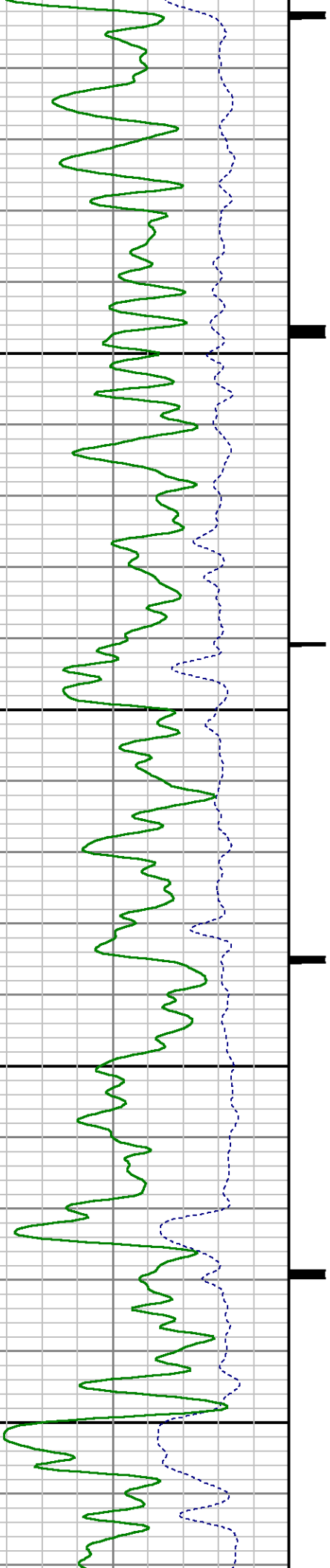


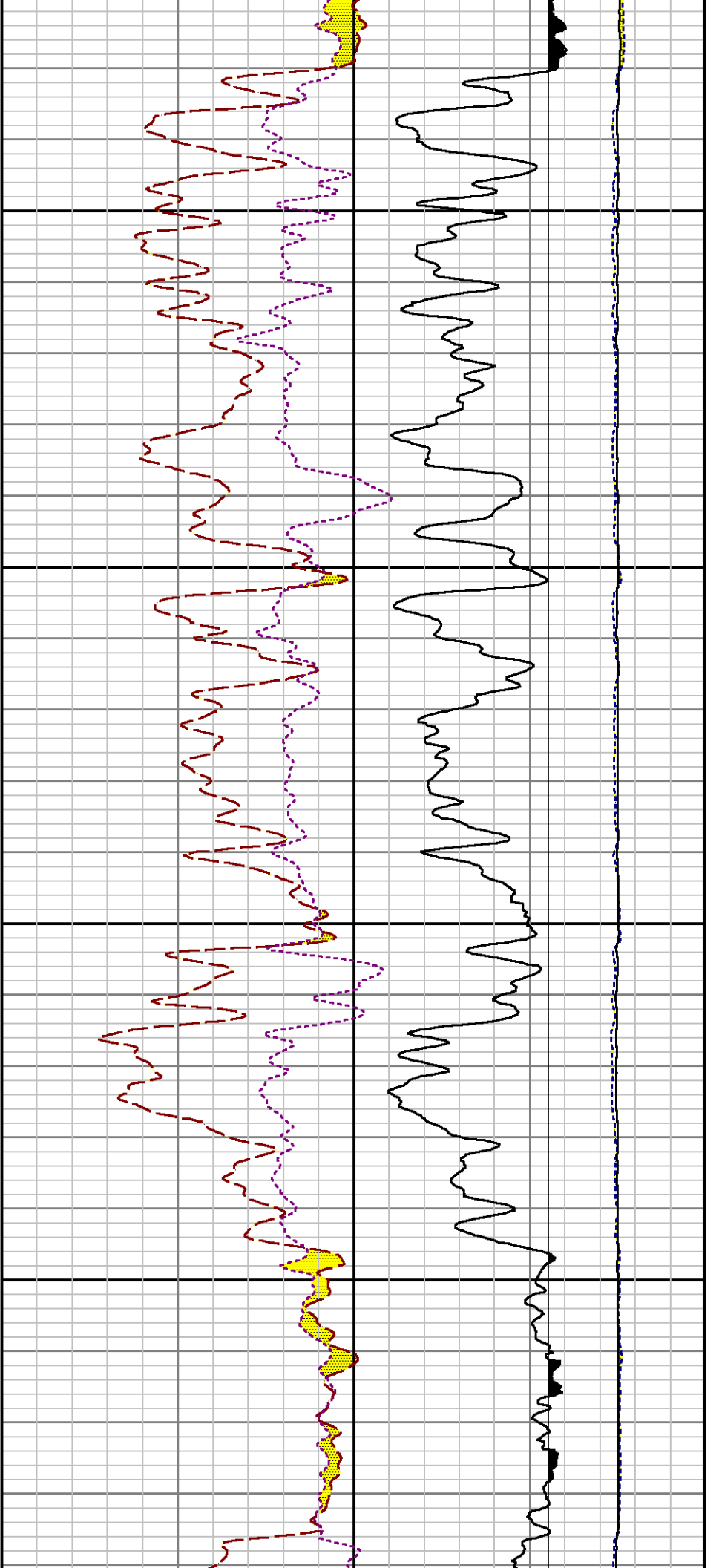




7900

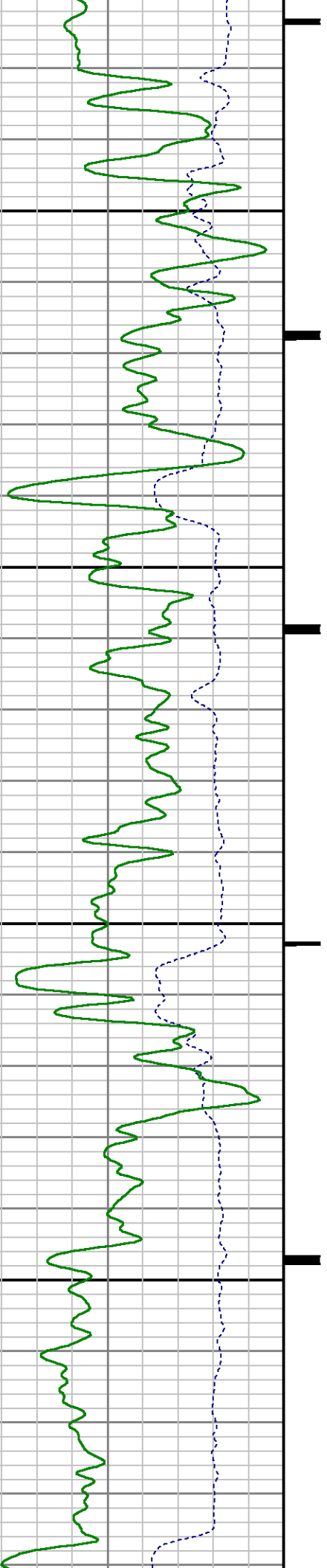
8000

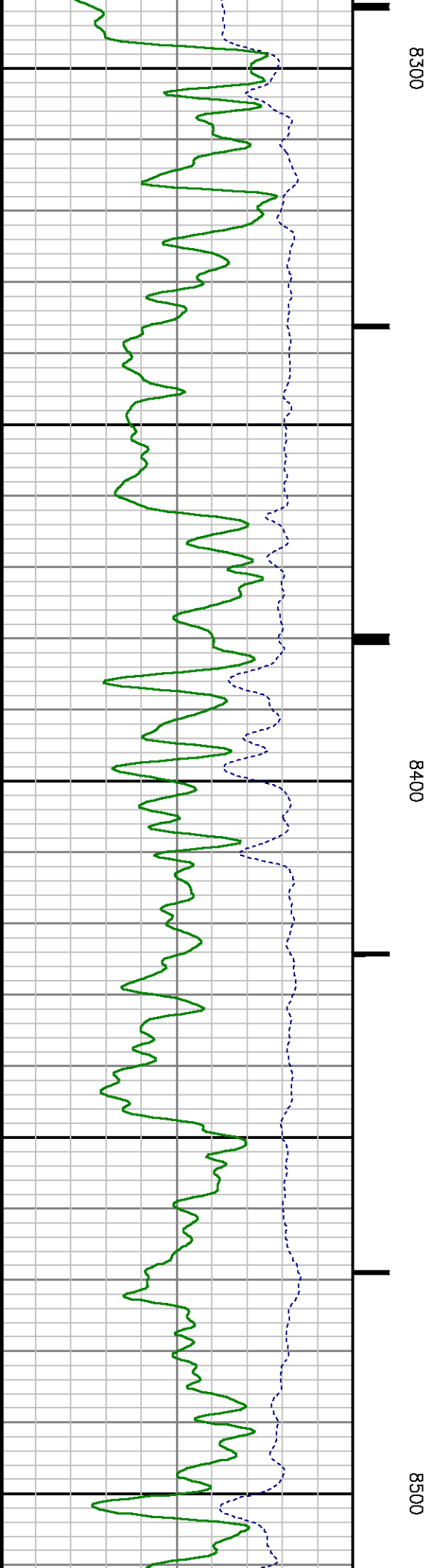
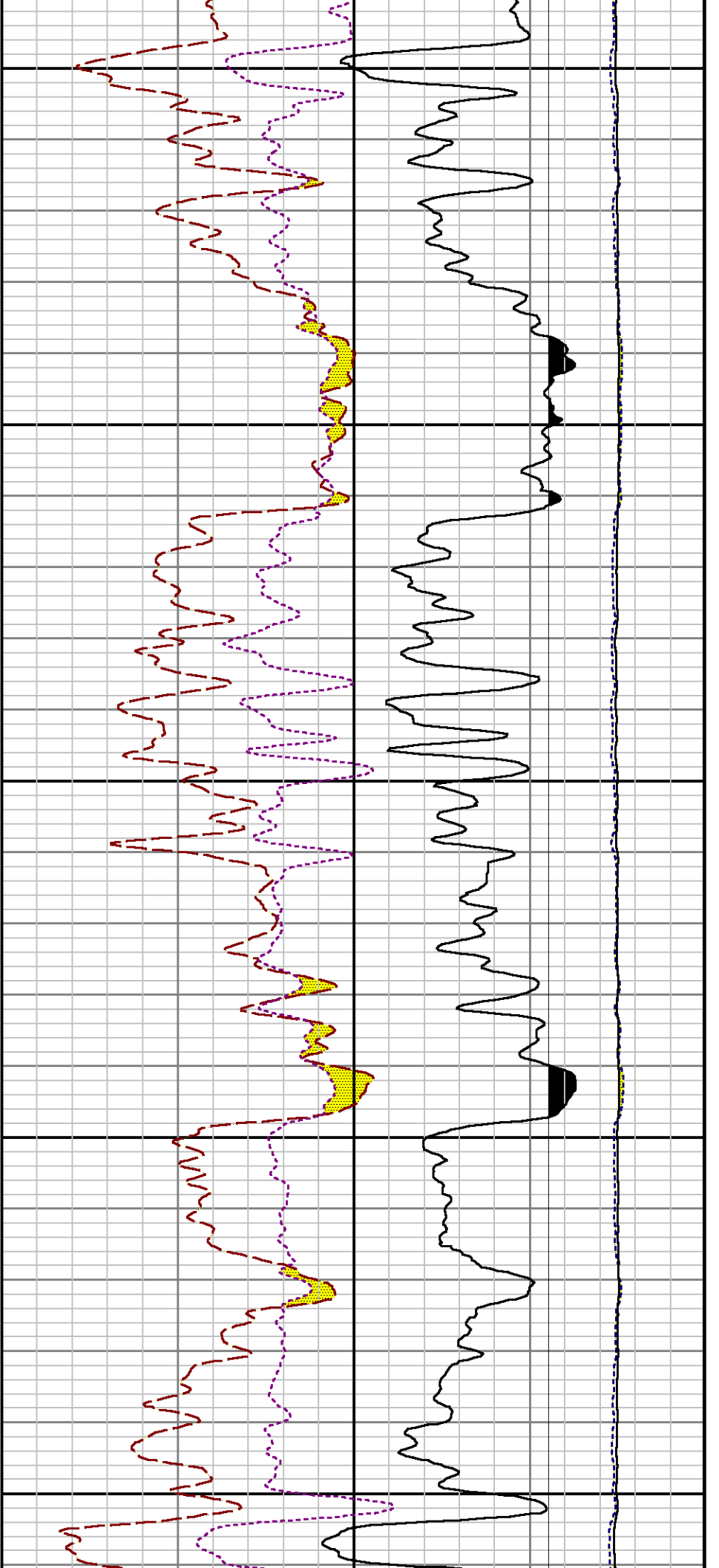


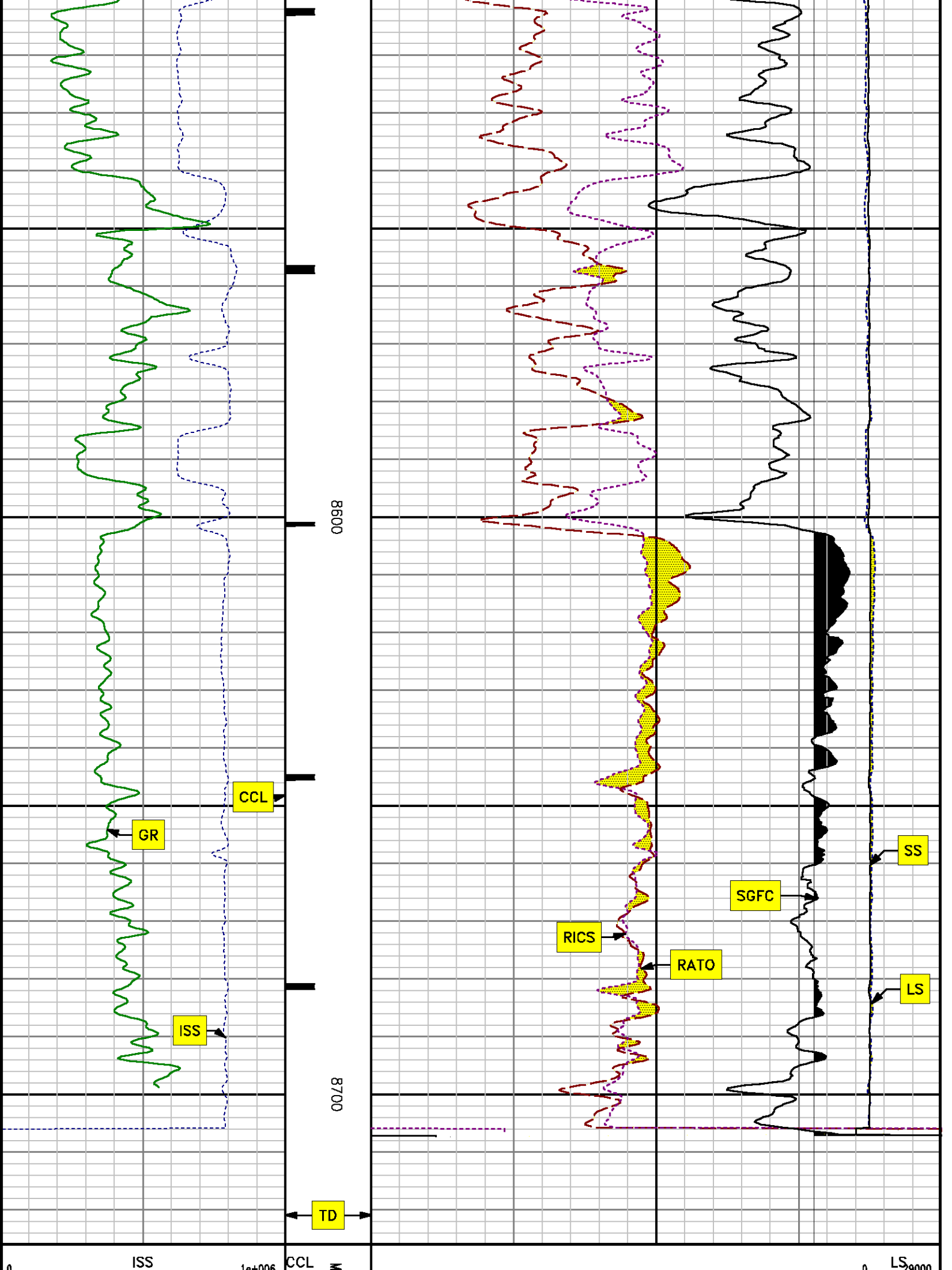


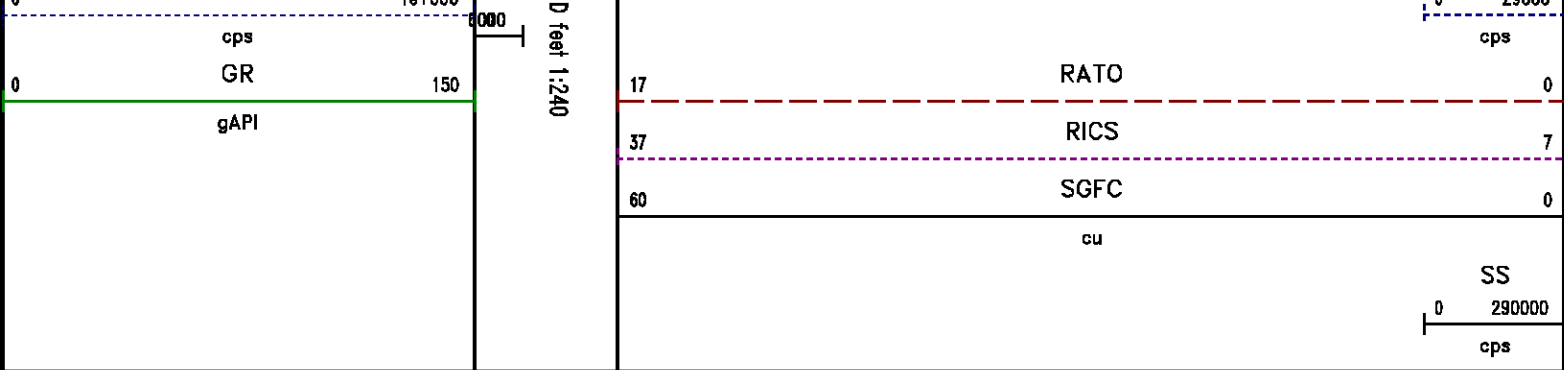
8100

8200









## REPEAT SECTION

### PNC 3-D MODE

#### SPL PROCESSING

| MEASUREMENT TYPE | PARAMETER                | VALUE          | UNITS | TOP      | BOTTOM   |
|------------------|--------------------------|----------------|-------|----------|----------|
| PNC Porosity     | Borehole                 | Cased          |       | 7886.227 | 8222.383 |
| PNC Porosity     | Borehole Size            | 8.750          | inch  | 7886.227 | 8222.383 |
| PNC Porosity     | Casing Size              | 4.500          | inch  | 7886.227 | 8222.383 |
| PNC Porosity     | Gas Filled               | Non Gas Filled |       | 7886.227 | 8222.383 |
| PNC Porosity     | Matrix                   | Sandstone      |       | 7886.227 | 8222.383 |
| TPS Pressure     | Temperature Corr. Source | Fixed (72.00)  | degF  | 7886.227 | 8222.383 |

#### DEPTH OFFSETS

(for Acquired Curves)

| SERIES | DEPTH OFFSET | ACQUIRED CURVES |        |        |        |      |        |
|--------|--------------|-----------------|--------|--------|--------|------|--------|
| 8248ED | -26.519      | FLTM            |        |        |        |      |        |
| 8248ED | -24.519      | CCL             | CHV    |        |        |      |        |
| 2812LA | -21.969      | GR              |        |        |        |      |        |
| 8281XA | -12.702      | HVC3Q0          | SEQ3   | AMA3   | AML3   | BKX  | CXS    |
|        |              | CPT3Q0          | CPT3Q2 | CPT3Q3 | CPT3Q4 | ET3  | IXS    |
|        |              | MCS3            | MCS3Q0 | QCAL3  | RGN3   | RICX | SDA3   |
|        |              | SDL3            | SGA3   | SGL3   | STA3   | XS   | ASPEC3 |
|        |              | AMB3            | AMF3   | CHF3   | IXSC   | IXSN | RAT023 |
|        |              | RICXC           | RIN13C | RIN23  | RIN23C | SD3D | SG3D   |
|        |              | SGB3            | SGF3   | WDTH3  | CXSR   | IXSR | XSR    |

|        |         |         |         |        |        |        |         |
|--------|---------|---------|---------|--------|--------|--------|---------|
| 8281XA | -12.291 | RICXR   | SEQ2    | AMA2   | AMB2   | AMF2   | AML2    |
|        |         | BKL     | CHF2    | CLS    | CPT2Q0 | CPT2Q2 | CPT2Q3  |
|        |         | CPT2Q4  | ET2     | ILS    | LS     | MCS2   | MCS2Q0  |
|        |         | QCAL2   | RGN2    | RICL   | RONE23 | RTW023 | SDA2    |
|        |         | SDL2    | SGA2    | SGB2   | SGF2   | SGK2   | SGL2    |
|        |         | STA2    | ASPEC2  | ILSC   | ILSN   | WDTH2  | RICLC   |
|        |         | CLSR    | ILSR    | LSR    | RICLR  |        |         |
| 8281XA | -12.041 | CPRS    | HVC1Q0  | MV     | SEQ    | SEQ1   | AMA1    |
|        |         | AMB1    | AME1    | AMF1   | AML1   | BKS    | CHF1    |
|        |         | CSS     | CORB    | CORF   | CPT1Q0 | CPT1Q2 | CPT1Q2A |
|        |         | CPT1Q2B | CPT1Q2C | CPT1Q3 | CPT1Q4 | CPT1Q5 | ET1     |
|        |         | G1      | G2      | GE1S   | GE2S   | ISS    | MCS1    |
|        |         | MCS1Q0  | QA1     | QCAL1  | QM1    | RAT0   | RAT013  |
|        |         | RBOR    | RGN1    | RICS   | RIN    | RONE   | RPOR    |
|        |         | RTW0    | RIN13   | RONE13 | RTW013 | SALB   | SC1     |
|        |         | SDA1    | SDL1    | SGA1   | SGB1   | SGBC   | SGE1    |
|        |         | SGF1    | SGFC    | SGK1   | SGL1   | SS     | SS2     |
|        |         | STA1    | PD1S    | PD2S   | PD3S   | MD1S   | MD2S    |
|        |         | MD3S    | DG1S    | DG2S   | DG3S   | PD1M   | PD2M    |
|        |         | PD3M    | MD1M    | MD2M   | MD3M   | DG1M   | DG2M    |
|        |         | DG3M    | MVS     | MA     | MVM    | FILV   | IAM     |
|        |         | TA      | PVM     | PVS    | IAS    | SSTAT  | QPD1    |
|        |         | QPD2    | QPD3    | QMD1   | QMD2   | QMD3   | QDG1    |
|        |         | QDG2    | QDG3    | QMA    | QTA    | QFILV  | QMV     |
|        |         | QPV     | QIA     | DERR   | DCNT   | QPK1   | QSA1    |
|        |         | PKS1    | ASPEC1  | HOC    | FE2XC  | ISSC   | RINC    |
|        |         | ISSN    | RDEN    | WDTH1  | RICSC  | CSSR   | G1R     |
|        |         | G2R     | ISSR    | SSR    | SS2R   | RATOR  | RAT013R |
|        |         | RBORR   | RICSR   | RINR   | RIN13R | RONER  | RPORR   |
|        |         | RTWOR   |         |        |        |        |         |
| 8255XA | -0.792  | PTFS    | PTMS    |        |        |        |         |
| 8255XA | -0.775  | SPF1    | SPFQ    | TSCP   | TSDP   |        |         |
| 8255XA | 0.000   | DTEM    | TEMP    | TNF    |        |        |         |
| SYSTEM | 0.000   | TEN     | TTEN    |        |        |        |         |

Created by : RPM9, v5.3.1.0

Plotted by : PlotMgr, v5.4.504

Company : WPX ENERGY

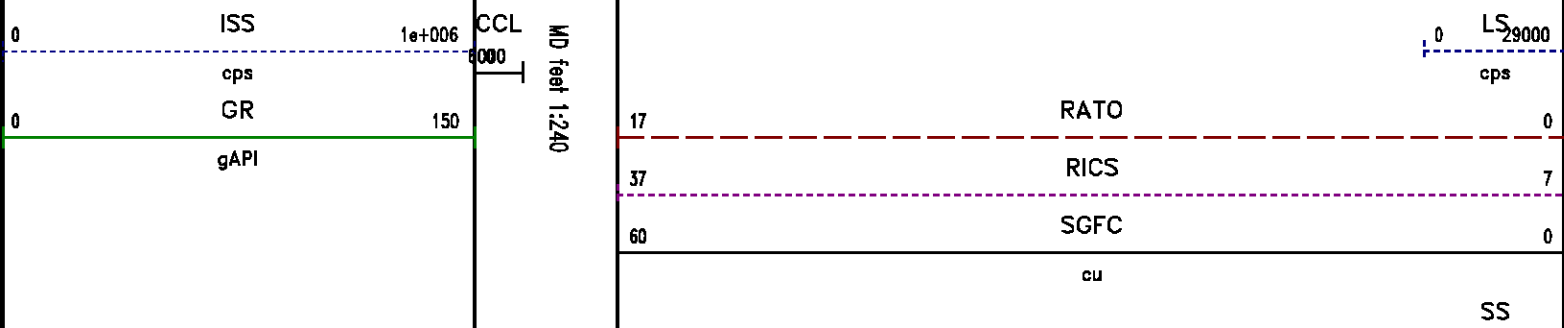
Well : SAVAGE RWF 13-25

File Name : d:\welldata\wp\savege rwf 13-25\13rpm\repeat.xtf

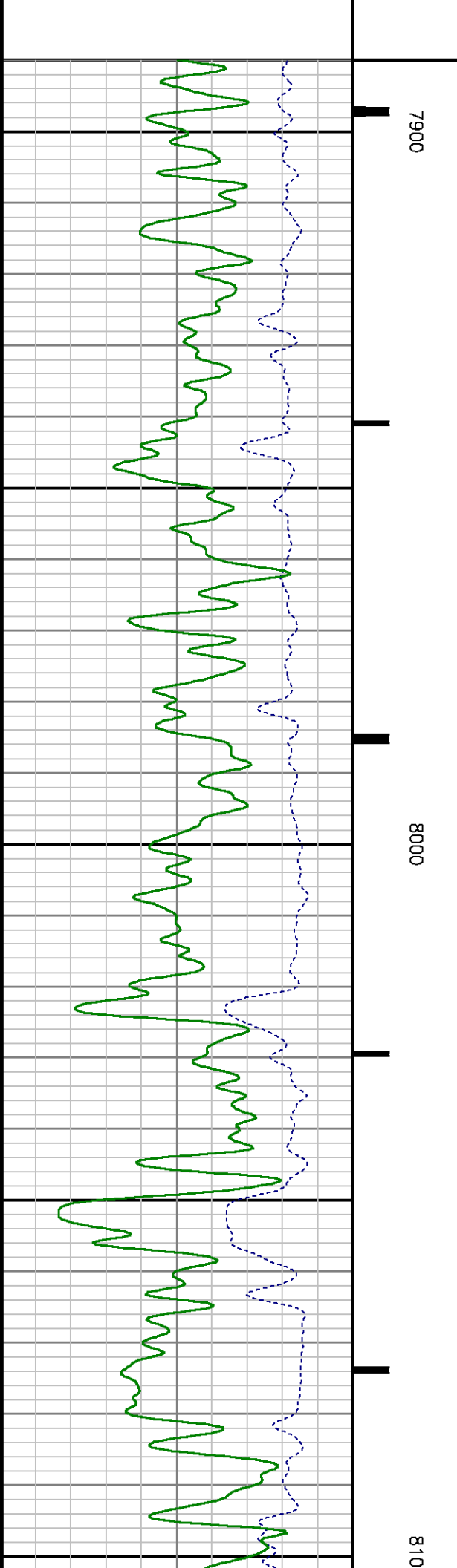
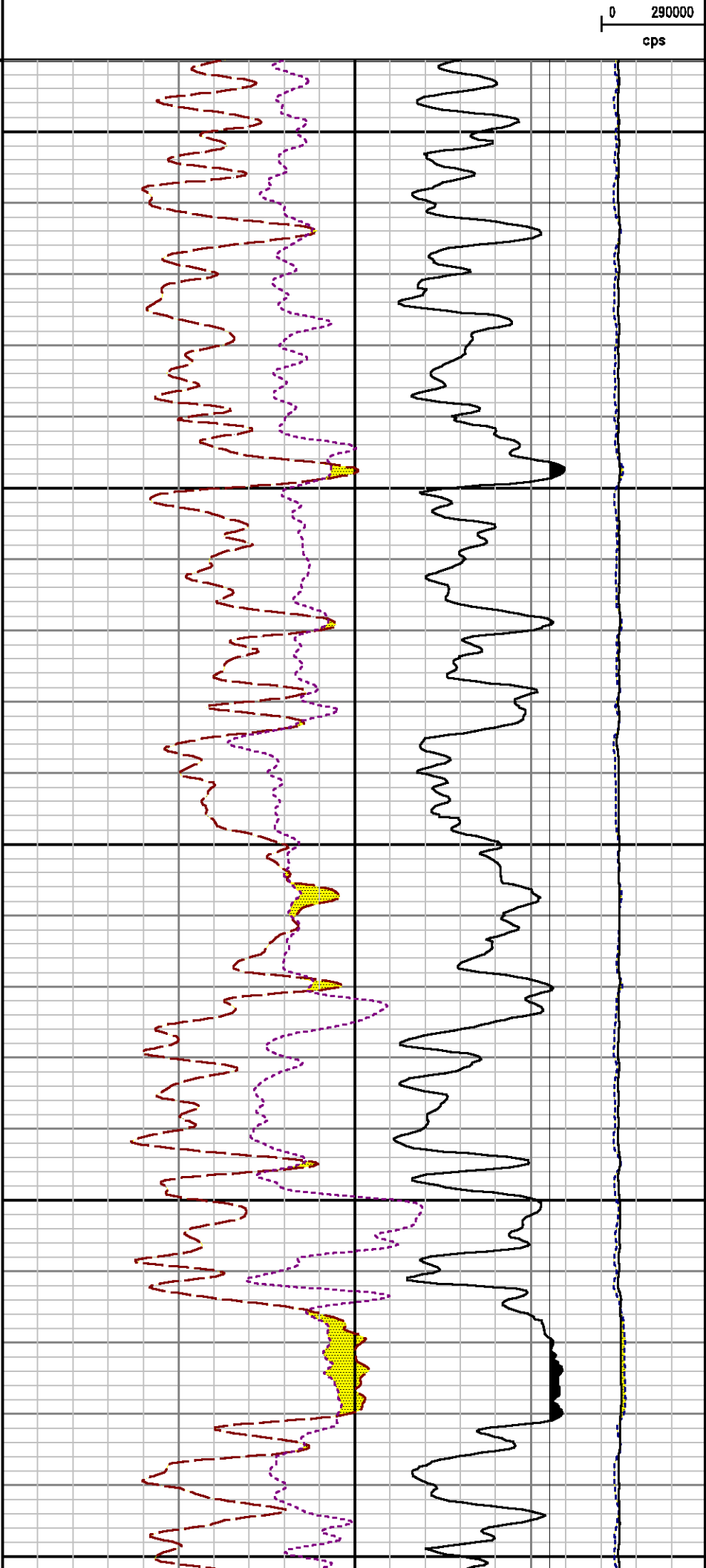
Mode : PlotMgr 5.4.504

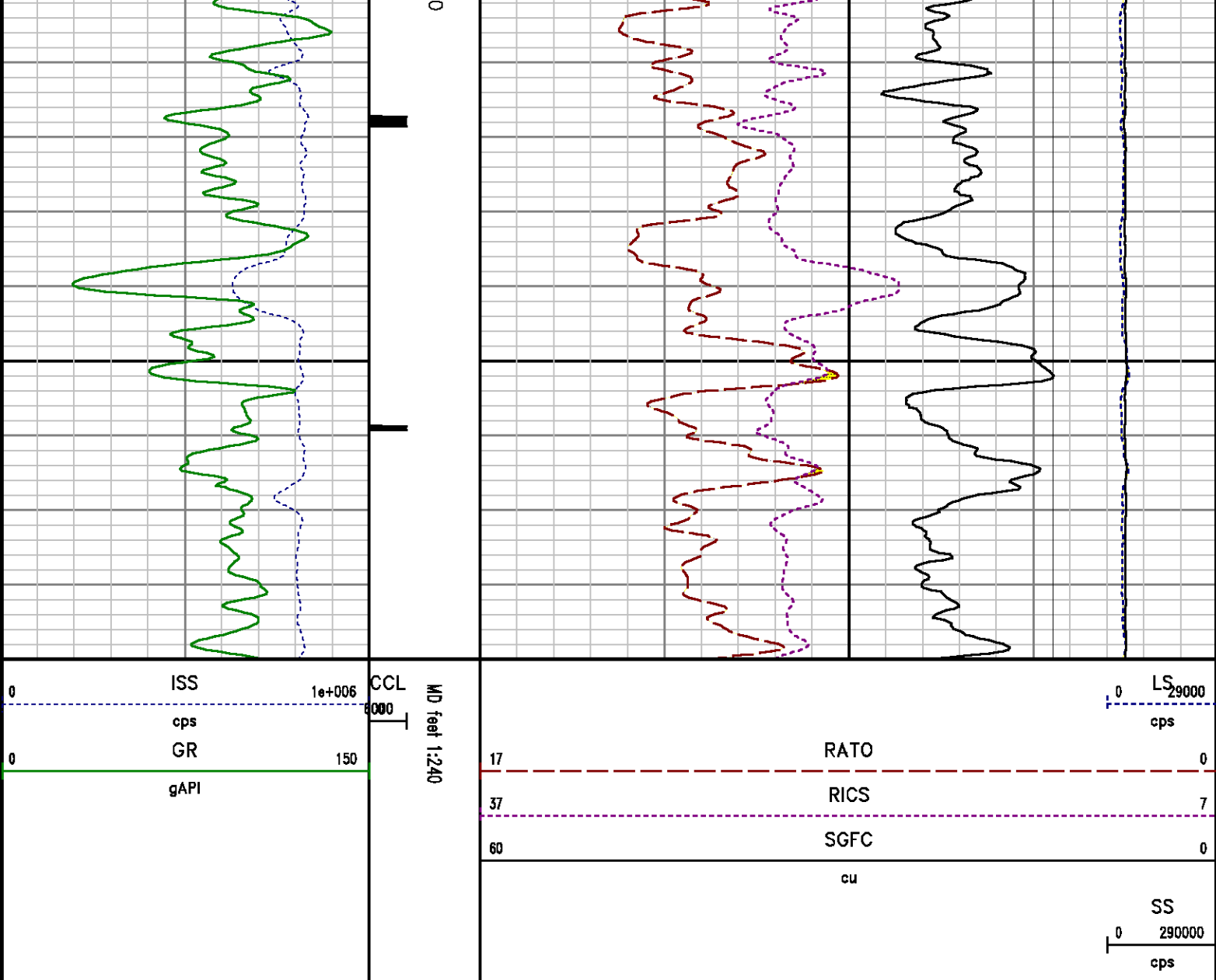
Interval : 7890.00 - 8190.00 feet UP

Created : 3/27/2014 11:34:42 AM









## CALIBRATION SUMMARY

PNC

Calibration File: C:\case\calver\PNC\25101.cal

### PNC 3D CALIBRATION SUMMARY

DATE/TIME PERFORMED: Thu Mar 13 14:14:10 2014 TOOL SERIES: 8281XA ASSET: 251 SEQ: 01

Calibrator #

GJSHOP GJSHOP

Source #

8281AA 10220684

|              | ISS     | Mtr Vlt's<br>(V) | SS Gain | LS Gain | XLS Gain | EA Temp<br>(degF) | Sync Delay<br>(usec) | RCAL   |
|--------------|---------|------------------|---------|---------|----------|-------------------|----------------------|--------|
| Raw Data     | 814019  | 123.00           | 2309.00 | 2303.00 | 2319.00  | 107.03            | 7.00                 | 0.9802 |
| Interpolated | 1300000 | 144.37           | 2293.78 | 2297.36 | 2317.30  |                   |                      |        |

|          | ISS    | BKS     | BKL     | BKX    | SGA1        | SDA1      | SGA2        | SDA2      |
|----------|--------|---------|---------|--------|-------------|-----------|-------------|-----------|
| Raw Data | 814019 | 9005.19 | 1478.68 | 184.20 | 25.79       | 0.14      | 24.40       | 0.28      |
|          |        |         |         |        | 25.35 26.40 | 0.00 0.20 | 23.60 24.80 | 0.00 0.40 |

|               | ISS    | ILS       | IXS      | SS       | SS2      | LS      | CSS      | CLS      |
|---------------|--------|-----------|----------|----------|----------|---------|----------|----------|
| Raw Data      | 814019 | 171904.59 | 27109.32 | 91110.88 | 32439.69 | 8459.48 | 55168.11 | 13542.46 |
| Fit Quality % |        | 0.43      | 0.66     | 0.58     | 0.56     | 0.43    | 0.55     | 0.45     |

|               | ISS     | RBOR      | RIN<br>ISS/ILS | RIN13<br>ISS/IXS | RICS<br>ISS/CSS | RATO<br>SS/LS | RTWO<br>SS2/LS | RONE<br>CSS/CLS |
|---------------|---------|-----------|----------------|------------------|-----------------|---------------|----------------|-----------------|
| Raw Data      | 814019  | 1.43      | 4.74           | 30.03            | 14.76           | 10.77         | 3.83           | 4.07            |
|               |         | 1.42 1.45 | 3.55 5.52      | 22.20 32.70      | 10.99 16.34     | 10.06 11.10   | 3.57 3.95      | 3.76 4.22       |
| Fit Quality % |         | 0.03      | 0.25           | 0.16             | 0.19            | 0.07          | 0.05           | 0.05            |
| Reduced       | 1378500 | 1.43      | 4.75           | 30.10            | 14.80           | 10.76         | 3.83           | 4.07            |
|               |         | 1.42 1.45 | 4.33 5.52      | 27.60 32.70      | 13.70 16.34     | 10.06 11.10   | 3.57 3.95      | 3.76 4.22       |

## GAMMA RAY

Calibration File: C:\case\calver\GR\38209.cal

### CALIBRATION SUMMARY

DATE/TIME PERFORMED: Sun Mar 09 17:06:22 2014 TOOL SERIES: 2812LA ASSET: 382 SEQ: 09

| Calibrator # | Background<br>[cps] | Calibrator On<br>[cps] | Multiplicative | Background<br>[api] | Calibrator On<br>[api] | Differential<br>[api] |
|--------------|---------------------|------------------------|----------------|---------------------|------------------------|-----------------------|
| S2K WA-612   | 34.21               | 244.93                 | 0.997          | 34.09               | 244.09                 | 210.00                |

Verification File: C:\case\calver\GR\38209.VP

### PRIMARY VERIFICATION

DATE/TIME PERFORMED: Sun Mar 09 17:10:55 2014 TOOL SERIES: 2812LA ASSET: 382 SEQ: 09

| Calibrator # | Background<br>[cps] | Calibrator On<br>[cps] | Multiplicative | Background<br>[api] | Calibrator On<br>[api] | Differential<br>[api] |
|--------------|---------------------|------------------------|----------------|---------------------|------------------------|-----------------------|
| S2K WA-612   | 34.68               | 245.32                 | 0.997          | 34.56               | 244.48                 | 209.92                |

## TEMPERATURE

## CALIBRATION SUMMARY

DATE/TIME PERFORMED: FEB 13 2014

TOOL SERIES: 8255XA ASSET: 774568 SEQ: 13

|              | T(0)           | T(1)          | T(2)          | T(3)           | T(4)          | T(5)          |
|--------------|----------------|---------------|---------------|----------------|---------------|---------------|
| Coefficients | -9.274653e+000 | 1.055639e-001 | 2.143764e-006 | -2.782846e-010 | 0.000000e+000 | 0.000000e+000 |

## TOOL DIAGRAM

**OTA SHORT CABLE HEAD****PCM POWER SUPPLY**

|             |           |
|-------------|-----------|
| Series      | 8250EA    |
| Mnemonic    | PCM       |
| Diameter    | 1.70"     |
| Weight      | 18.00 lb  |
| Length      | 3.86'     |
| Temp Rating | 350.00 °F |

**TELEMETRY / CCL**

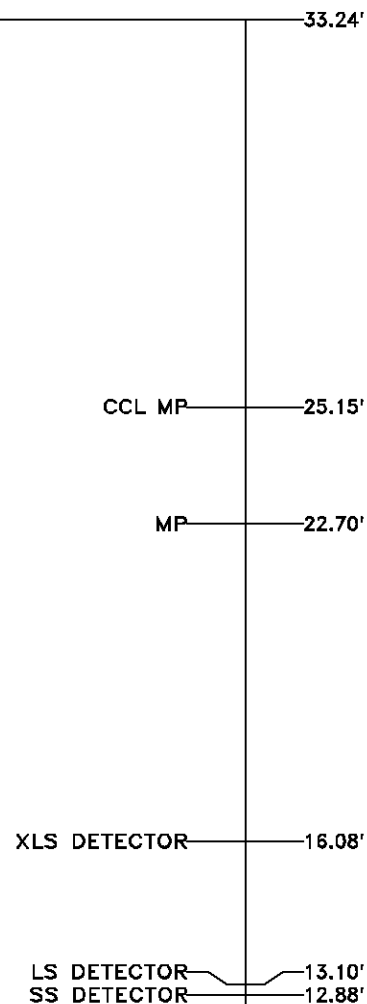
|               |              |
|---------------|--------------|
| Series        | 8248EA       |
| Mnemonic      | PCM          |
| Diameter      | 1.70"        |
| Weight        | 20.00 lb     |
| Length        | 4.46'        |
| Measure Point | 1.00' CCL MP |
| Temp Rating   | 350.00 °F    |
| Press Rating  | 15000.00 PSI |

**SONDEX GAMMA RAY**

|          |        |
|----------|--------|
| Series   | 2812LA |
| Mnemonic | SNDX   |
| Diameter | 1.69"  |

**RESERVOIR PERFORMANCE MONITOR**

|               |                     |
|---------------|---------------------|
| Series        | 8281XA              |
| Mnemonic      | RPM                 |
| Diameter      | 1.70"               |
| Weight        | 75.00 lb            |
| Length        | 18.58'              |
| Measure Point | 9.49' SS DETECTOR   |
| Measure Point | 9.72' LS DETECTOR   |
| Measure Point | 12.69' XLS DETECTOR |
| Temp Rating   | 350.00 °F           |
| Press Rating  | 20000.00 PSI        |



| TEMPERATURE / PRESSURE |          |
|------------------------|----------|
| Series                 | 8255XA   |
| Mnemonic               | SRPL     |
| Diameter               | 1.70"    |
| Weight                 | 13.00 lb |
| Length                 | 3.30'    |



PRES MP 1.61'

0.00'

Total Length: 33.24'

Total Weight: Not Available

Max Diameter: 0' 1.70"

|  |   |                 |                                |  |
|--|---|-----------------|--------------------------------|--|
| <br><b>Baker Atlas</b><br> | <b>Company</b> WPX ENERGY                               |                 | <b>File No:</b> CH084202       |  |
|  | <b>Well</b> SAVAGE RWF 13-25                            |                 | <b>API No:</b>                 |  |
|  | <b>Field</b> RULISON                                    |                 | <b>API No:</b> 05045219830000  |  |
|  | <b>County</b> GARFIELD                                  | <b>State</b> CO |                                |  |
|  | <b>Location</b>   |                 | <b>Elevations</b>              |  |
|  | SHL: 1625' FSL & 2294' FWL<br>BHL: 1809' FSL & 834' FWL |                 | KB 6122 ft<br>DF<br>GL 6096 ft |  |
|  | <b>SEC</b> 25   | <b>TWP</b> 6S   | <b>RGE</b> 94W                 | 25 6S 94W<br>RWF 23-25 PAD<br>NABORS 577 |