

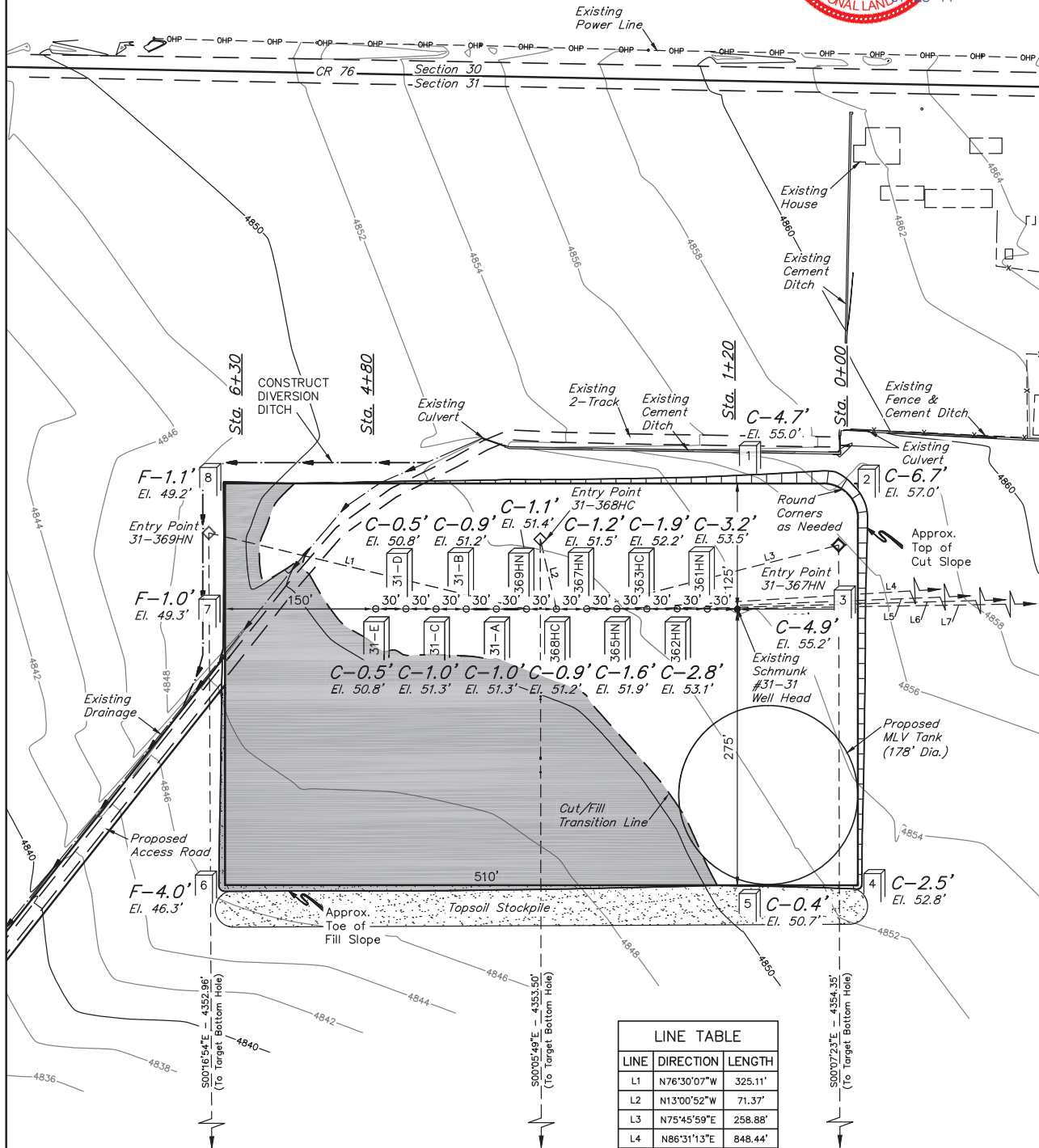
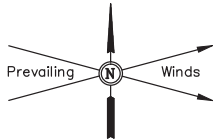
GREAT WESTERN OIL & GAS COMPANY

CONSTRUCTION LAYOUT FOR

SCHMUNK EF 31-361HN, 31-362HN, 31-363HC, 31-365HN,
31-367HN, 31-368HC, 31-369HN, 31-A, 31-B, 31-C,
31-D & 31-E ON EXISTING SCHMUNK 31-31 WELL PAD
SECTION 31, T7N, R65W, 6th. P.M.
NW 1/4 NE 1/4

FIGURE #1

SCALE: 1" = 100'
DATE: 09-12-13
DRAWN BY: H.K.W.
REV: 10-22-13 J.W.
REV: 01-28-14 H.K.W.



Elev. Ungraded Ground At 31-361HN Loc. Stake = 4853.5'
FINISHED GRADE ELEV. AT 31-361HN LOC. STAKE = 4850.3'

UINTAH ENGINEERING & LAND SURVEYING
85 So. 200 East • Vernal, Utah 84078 • (435) 789-1017

1" = 40'
X-Section
Scale
1" = 100'

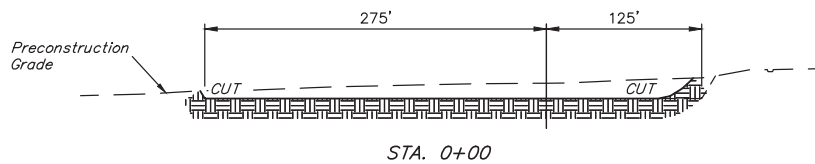
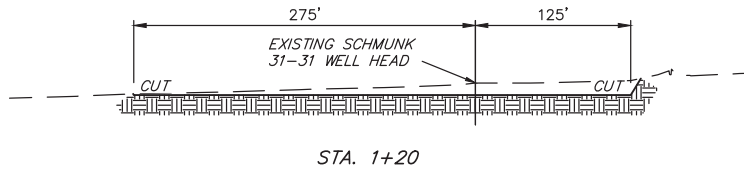
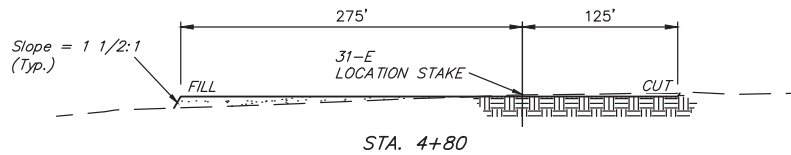
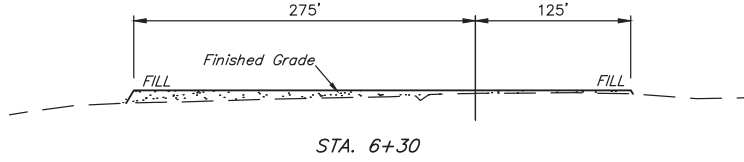
DATE: 09-12-13
DRAWN BY: H.K.W.
REV: 10-22-13 J.W.

GREAT WESTERN OIL & GAS COMPANY

CONSTRUCTION LAYOUT CROSS SECTIONS FOR

SCHMUNK EF 31-361HN, 31-362HN, 31-363HC, 31-365HN,
31-367HN, 31-368HC, 31-369HN, 31-A, 31-B, 31-C,
31-D & 31-E ON EXISTING SCHMUNK 31-31 WELL PAD
SECTION 31, T7N, R65W, 6th. P.M.
NW 1/4 NE 1/4

FIGURE #2



NOTE:

Topsoil should not be Stripped Below Finished Grade on Substructure Area.

* NOTE:

FILL QUANTITY INCLUDES 5% FOR COMPACTION

APPROXIMATE YARDAGES

(6") Topsoil Stripping = 4,840 Cu. Yds.
Remaining Location = 9,240 Cu. Yds.
TOTAL CUT = 14,080 CU. YDS.
FILL = 9,240 CU. YDS.

EXCESS MATERIAL = 4,840 Cu. Yds.
Topsoil = 4,840 Cu. Yds.
EXCESS UNBALANCE = 0 Cu. Yds.
(After Interim Rehabilitation)

APPROXIMATE ACREAGE

WELL SITE DISTURBANCE = ± 6.530 ACRES
ACCESS ROAD DISTURBANCE = ± 1.487 ACRES
TOTAL = ± 8.017 ACRES

UINTAH ENGINEERING & LAND SURVEYING
85 So. 200 East * Vernal, Utah 84078 * (435) 789-1017