

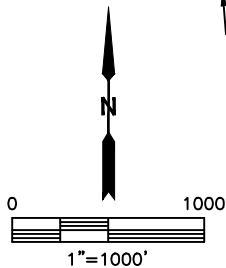
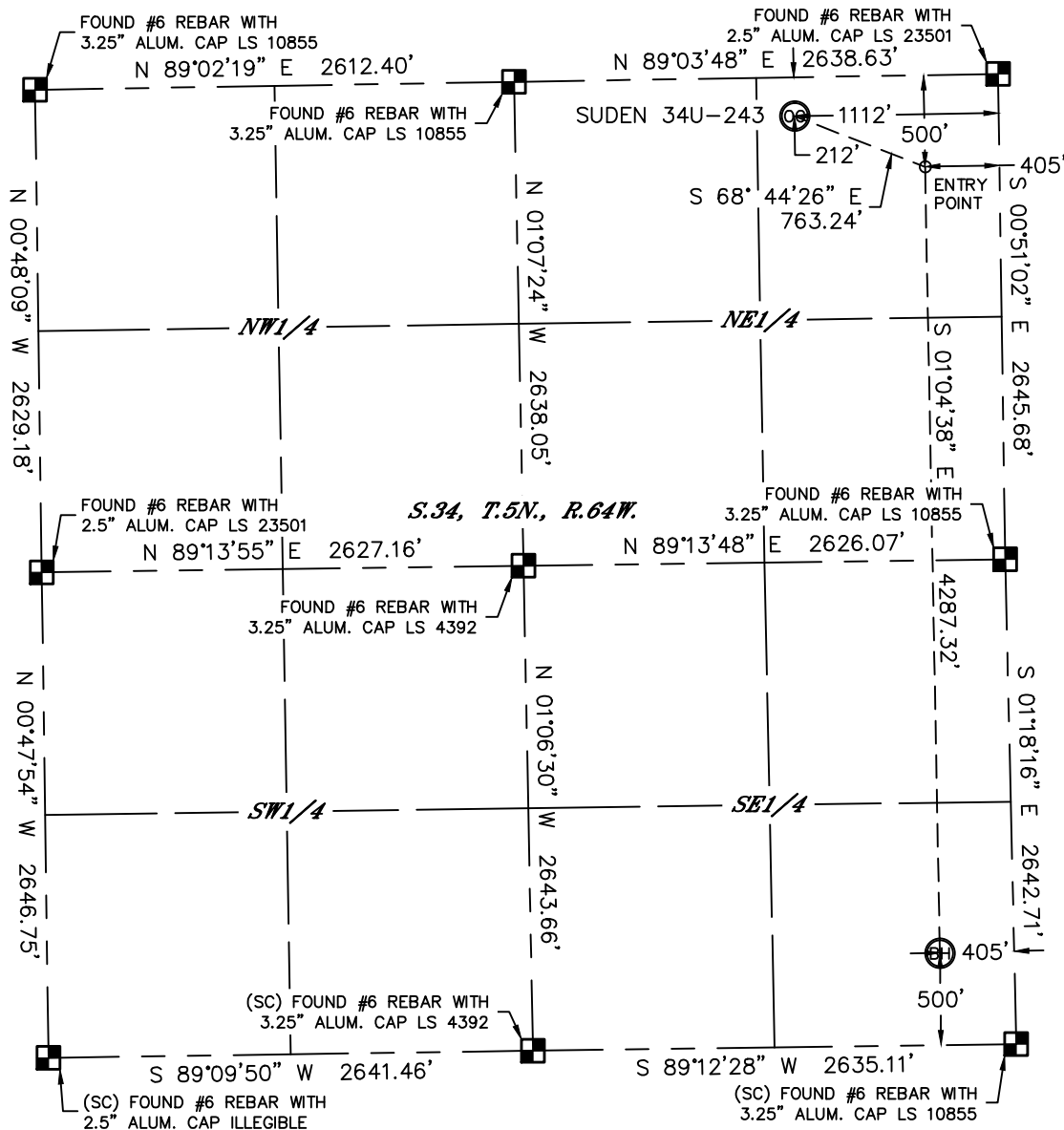


Lat40°, Inc. 1635 Foxtrail Drive, Suite 325 Loveland, CO 970-776-3321

# WELL LOCATION CERTIFICATE

THIS MAP DOES NOT REPRESENT A BOUNDARY SURVEY

SECTION: 34  
TOWNSHIP: 5N  
RANGE: 64W



In accordance with a request from Jake Bragg with PDC ENERGY Lat40°, Inc. has determined the surface location of the SUDEN 34U-243 to be 212' from the NORTH line and 1112' from the EAST line and the bottom hole to be 500' from the SOUTH line and 405' from the EAST line as measured at right angles from the section lines of Section 34, Township 5 North, Range 64 West of the Sixth Principal Meridian, County of Weld, State of Colorado.

I hereby state that this Well Location Certificate was prepared by me, or under my direct supervision, that the fieldwork was completed on 12/13/2013, for and on behalf of PDC ENERGY. That this is not a Land Survey Plat or an Improvement Survey Plat, and that it is not to be relied upon for establishment of fence, building, or other future improvement lines.

## NOTE:

- 1) Bearings shown are Grid Bearings of the Colorado State Plane Coordinate System, North Zone, North American Datum 1983/2007. The lineal dimensions as contained herein are based upon the "U.S. Survey Foot."
- 2) Ground elevations are based on an observed GPS elevation (NAVD 1988 DATUM).
- 3) IMPROVEMENTS: See LOCATION DRAWING for all visible improvements within 500' of disturbed area.
- 4) SURFACE USE: RANGELAND
- 5) INSTRUMENT OPERATOR: BRIAN ROTTINGHAUS
- 6) NEAREST CULTURAL ITEMS:  
BUILDING: 1088' SW  
BUILDING UNIT: 1185' SW  
HIGH OCCUPANCY BUILDING UNIT: +5280'  
DESIGNATED OUTSIDE ACTIVITY AREA: +5280'  
PUBLIC ROAD: 204' N (CR 52)  
ABOVE GROUND UTILITY: 238' N  
RAILROAD: +5280'  
PROPERTY LINE: 212' N

## SURFACE LOCATION

LAT: 40.36252N  
LONG: 104.53033W  
PDOP: 2.0  
ELEV: 4668'  
1/4,1/4: NE1/4NE1/4

## BOTTOM HOLE

LAT: 40.34997N  
LONG: 104.52767W  
1/4,1/4: SE1/4SE1/4

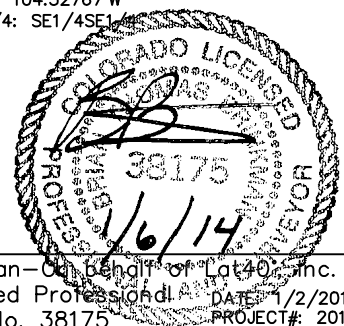
## ENTRY POINT

LAT: 40.36174N  
LONG: 104.52779W  
1/4,1/4: NE1/4NE1/4

## LEGEND

- = ALIQUOT MONUMENT AS DESCRIBED  
○ = CALCULATED POSITION

Brian T. Brinkman—on behalf of Lat40°, Inc.  
Colorado Licensed Professional Land Surveyor No. 38175  
DATE: 1/2/2014  
PROJECT#: 2013181



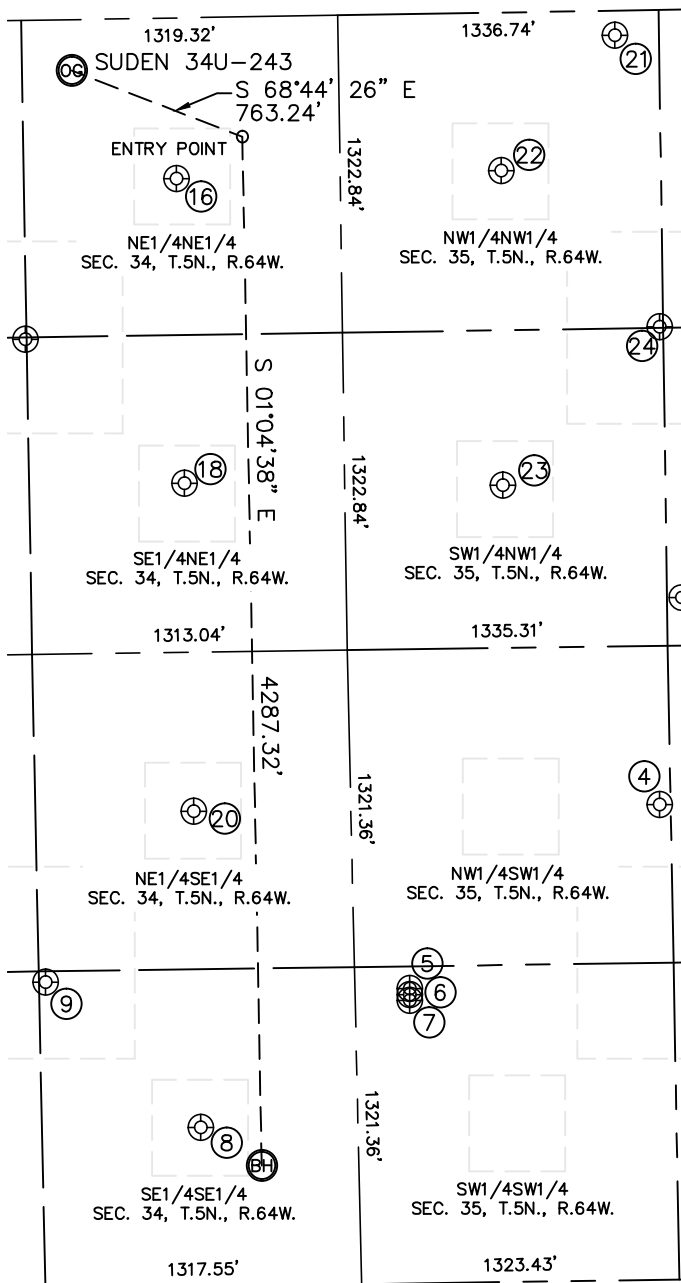


Lat40°, Inc. 1635 Foxtrail Drive, Suite 325 Loveland, CO 970-776-3321

# SITE SKETCH

SUDEN 34U-243

SECTION: 34  
TOWNSHIP: 5N  
RANGE: 64W



WELL #	WELL NAME	SHL FOOTAGE				SHL LAT°	SHL LONG°	PDOP	ELEV.(FT)	1/4/1/4
4	CPC-HOSHIKO 35-1	1980	FSL	1287	FWL	40.35405	-104.52167	1.6	4622	NWSW
5	ECKHARDT B 35-33	1228	FSL	228	FWL	40.35197	-104.52543	1.6	4620	SWSW
6	ECKHARDT B 35-12	1204	FSL	228	FWL	40.35191	-104.52543	1.6	4620	SWSW
7	ECKHARDT B 35-13	1180	FSL	227	FWL	40.35184	-104.52543	1.7	4620	SWSW
8	ECKHARDT 44-34	662	FSL	656	FEL	40.35041	-104.52858	2.0	4629	SESE
9	ECKHARDT 5	1277	FSL	1289	FEL	40.35209	-104.53088	2.4	4627	SESE
16	GAMEWELL 34-3	670	FNL	682	FEL	40.36127	-104.52879	1.9	4678	NENE
18	GAMEWELL 34-4	1940	FNL	668	FEL	40.35778	-104.52872	2.1	4657	SENE
20	ECKHARDT 43-34	1980	FSL	654	FEL	40.35403	-104.52863	2.1	4625	NESE
21	LOLOFF B 35-29	103	FNL	1152	FWL	40.36285	-104.52221	1.9	4662	NWNW
22	STROH 35-4	659	FNL	671	FWL	40.36132	-104.52393	1.8	4648	NWNW
23	STROH 1	1970	FNL	659	FWL	40.35772	-104.52396	1.8	4629	SWNW
24	LOLOFF B 35-19	1320	FNL	1321	FWL	40.35951	-104.52159	1.8	4630	NWNW

DATE: 1/2/2014  
PROJECT#: 2013181