



## **Drilling Services**

---

## **Proposal**

---

### **BERRY PETROLEUM COMPANY**

CHEVRON #35-10D

GARFIELD COUNTY, CO

WELL FILE:PLAN 1

AUGUST 22, 2007

---

**Weatherford International Ltd.**

2690 Oil Drive  
Casper, WY 82604  
+1-307-265-1413 Main  
+1-307-259-6061 Fax  
[www.weatherford.com](http://www.weatherford.com)



Berry Petroleum Company

CHEVRON #35-10D  
1490' FSL, 488' FWL  
SECTION 35-T5S-R96W  
GARFIELD COUNTY, CO

#### SITE DETAILS

CHEVRON 35 PAD  
SECTION 35 T5S R96W

Site Centre Latitude: 39°34'07.122N  
Longitude: 108°08'38.570W

Ground Level: 8087.00  
Positional Uncertainty: 0.00  
Convergence: -1.67

#### SECTION DETAILS

Sec	MD	Inc	Azi	TVD	+N/-S	+E/-W	DLeg	TFace	VSec	Target
1	0.00	0.00	168.47	0.00	0.00	0.00	0.00	0.00	0.00	
2	500.00	0.00	168.47	500.00	0.00	0.00	0.00	0.00	0.00	
3	960.72	9.21	168.47	958.73	-36.22	7.39	2.00	168.47	36.97	
4	6361.21	9.21	168.47	6289.54	-883.52	180.31	0.00	0.00	901.73	
5	7282.64	0.00	168.47	7207.00	-955.96	195.09	1.00	180.00	975.67	
6	10432.64	0.00	168.47	10357.00	-955.96	195.09	0.00	168.47	975.67	PBHL_35-10D

#### WELL DETAILS

Name	+N/-S	+E/-W	Northing	Easting	Latitude	Longitude	Slot
CHEVRON #35-10D	-51.92	-73.49	1642807.10	2254653.51	39°34'06.609N	108°08'39.509W	N/A

#### TARGET DETAILS

Name	TVD	+N/-S	+E/-W	Northing	Easting	Shape
PBHL_35-10D	10357.00	-955.96	195.09	1641845.86	2254820.70	Rectangle (100x200)

#### FIELD DETAILS

GARFIELD COUNTY (NAD 83)  
COLORADO

Geodetic System: US State Plane Coordinate System 1983  
Ellipsoid: GRS 1980  
Zone: Colorado, Central Zone  
Magnetic Model: bggm2006

System Datum: Mean Sea Level  
Local North: True North

#### FORMATION TOP DETAILS

No.	TVDPath	MDPath	Formation
1	2667.00	2691.31	WASATCH
2	5117.00	5173.34	FORT UNION
3	5617.00	5679.88	BASE FT. UNION
4	6847.00	6922.40	OHIO CREEK
5	7197.00	7272.64	MESAVERDE
6	7207.00	7282.64	APPROX TOP GAS
7	9707.00	9782.64	CAMEO
8	10207.00	10282.64	ROLLINS SS

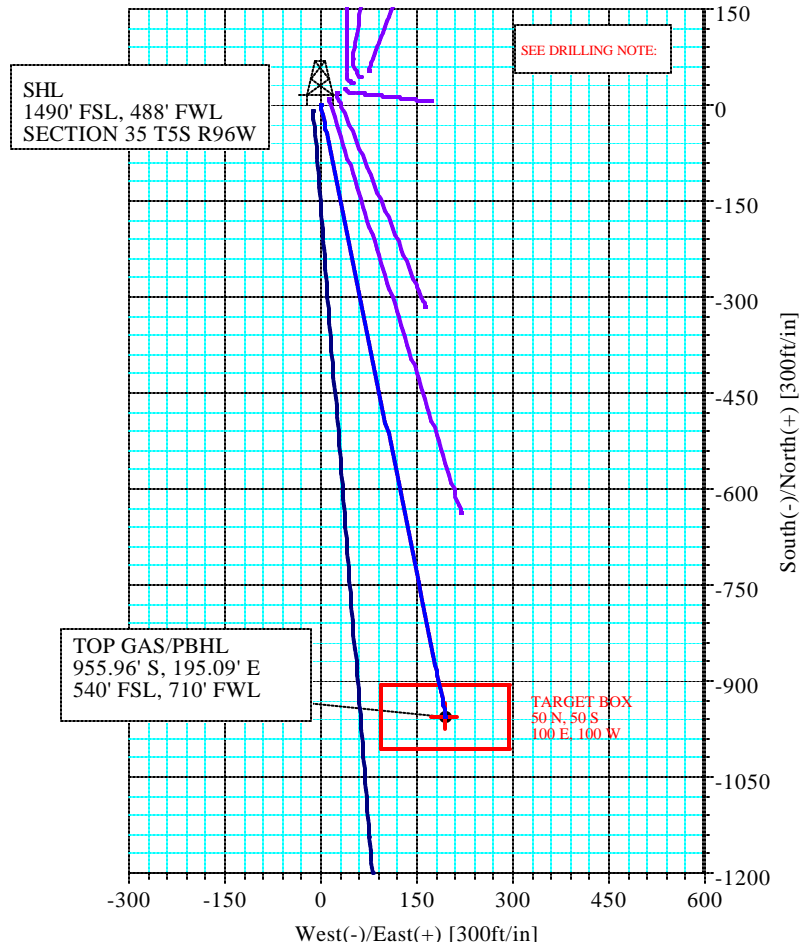
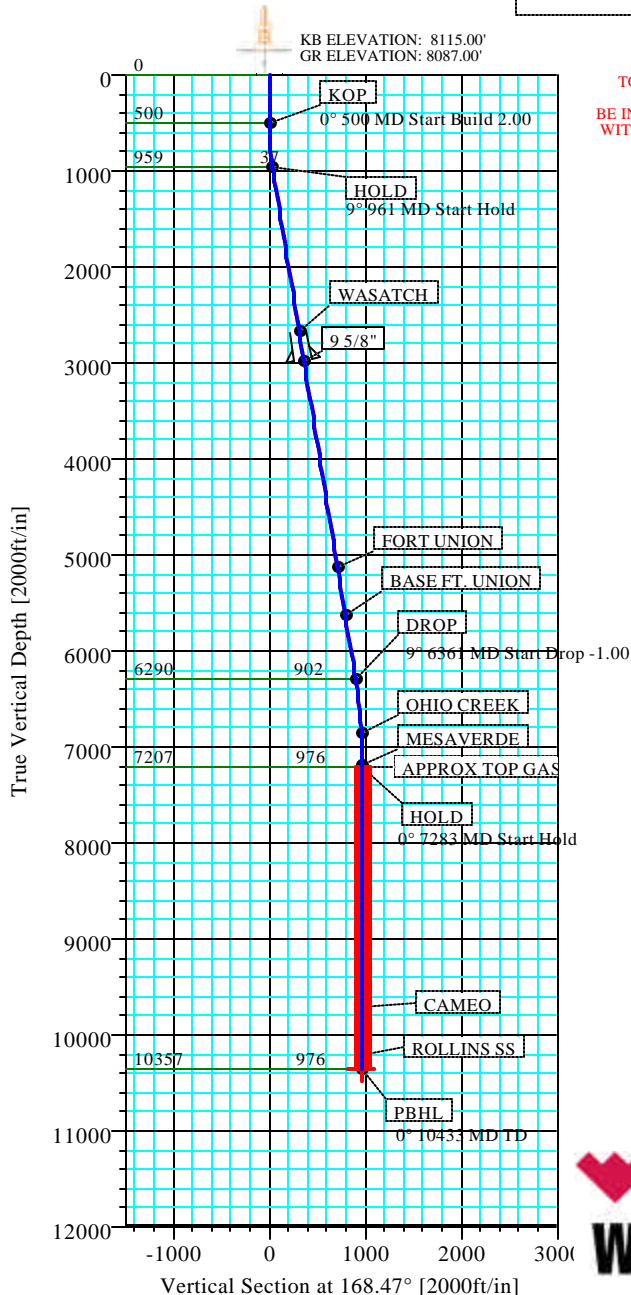
-DRILLING NOTE-  
TO ACCOUNT FOR THE 240° DRIFT IN AZIMUTH, AIM  
FOR THE NE SIDE OF PBHL, AND  
BE IN THE TARGET WINDOW BY THE TOP GAS AND STAY  
WITHIN THE WINDOW TO TD. DO NOT GO OUTSIDE THE  
WINDOW.



Azimuths to True North  
Magnetic North: 10.95°

Magnetic Field  
Strength: 52710nT  
Dip Angle: 65.91°  
Date: 8/22/2007  
Model: bggm2006

TOTAL CORRECTION TO TRUE NORTH 10.95°



Weatherford

Plan: Plan #1 (CHEVRON #35-10D/1)

Created By: ROBERT SCOTT

Date: 8/22/2007

# Weatherford International, Ltd.

## PLAN REPORT

<b>Company:</b> BERRY PETROLEUM COMPANY		<b>Date:</b> 8/22/2007	<b>Time:</b> 17:09:34	<b>Page:</b> 1
<b>Field:</b> GARFIELD COUNTY (NAD 83)		<b>Co-ordinate(NE) Reference:</b> Well: CHEVRON #35-10D, True North		
<b>Site:</b> CHEVRON 35 PAD		<b>Vertical (TVD) Reference:</b> SITE 8115.0		
<b>Well:</b> CHEVRON #35-10D		<b>Section (VS) Reference:</b> Well (0.00N,0.00E,168.47Azi)		
<b>Wellpath:</b> 1		<b>Survey Calculation Method:</b> Minimum Curvature		<b>Db:</b> Sybase

<b>Field:</b> GARFIELD COUNTY (NAD 83) COLORADO	
<b>Map System:</b> US State Plane Coordinate System 1983	<b>Map Zone:</b> Colorado, Central Zone
<b>Geo Datum:</b> GRS 1980	<b>Coordinate System:</b> Well Centre
<b>Sys Datum:</b> Mean Sea Level	<b>Geomagnetic Model:</b> bggm2006

<b>Site:</b> CHEVRON 35 PAD SECTION 35 T5S R96W	
<b>Site Position:</b>	<b>Northing:</b> 1642856.86 ft
<b>From:</b> Geographic	<b>Easting:</b> 2254728.49 ft
<b>Position Uncertainty:</b> 0.00 ft	<b>Latitude:</b> 39 34 7.122 N
<b>Ground Level:</b> 8087.00 ft	<b>Longitude:</b> 108 8 38.570 W
	<b>North Reference:</b> True
	<b>Grid Convergence:</b> -1.67 deg

<b>Well:</b> CHEVRON #35-10D 1490' FSL, 488' FWL		<b>Slot Name:</b>	
<b>Well Position:</b> +N/-S -51.92 ft	<b>Northing:</b> 1642807.10 ft	<b>Latitude:</b> 39 34 6.609 N	
+E/-W -73.49 ft	<b>Easting:</b> 2254653.51 ft	<b>Longitude:</b> 108 8 39.509 W	
<b>Position Uncertainty:</b> 0.00 ft			

<b>Wellpath:</b> 1		<b>Drilled From:</b> Surface
<b>Current Datum:</b> SITE	<b>Height:</b> 8115.00 ft	<b>Tie-on Depth:</b> 0.00 ft
<b>Magnetic Data:</b> 8/22/2007		<b>Above System Datum:</b> Mean Sea Level
<b>Field Strength:</b> 52710 nT		<b>Declination:</b> 10.95 deg
<b>Vertical Section: Depth From (TVD)</b>	<b>+N/-S</b>	<b>Mag Dip Angle:</b> 65.91 deg
ft	ft	<b>+E/-W</b>
		ft
0.00	0.00	0.00
		168.47

<b>Plan:</b> Plan #1	<b>Date Composed:</b> 8/22/2007
<b>Principal:</b> Yes	<b>Version:</b> 1
	<b>Tied-to:</b> From Surface

Plan Section Information										
MD ft	Incl deg	Azim deg	TVD ft	+N/-S ft	+E/-W ft	DLS deg/100ft	Build deg/100ft	Turn deg/100ft	TFO deg	Target
0.00	0.00	168.47	0.00	0.00	0.00	0.00	0.00	0.00	0.00	
500.00	0.00	168.47	500.00	0.00	0.00	0.00	0.00	0.00	0.00	
960.72	9.21	168.47	958.73	-36.22	7.39	2.00	2.00	0.00	168.47	
6361.21	9.21	168.47	6289.54	-883.52	180.31	0.00	0.00	0.00	0.00	
7282.64	0.00	168.47	7207.00	-955.96	195.09	1.00	-1.00	0.00	180.00	
10432.64	0.00	168.47	10357.00	-955.96	195.09	0.00	0.00	0.00	168.47	PBHL_35-10D

Survey										
MD ft	Incl deg	Azim deg	TVD ft	N/S ft	E/W ft	VS ft	DLS deg/100ft	Build deg/100ft	Turn deg/100ft	Comment
500.00	0.00	168.47	500.00	0.00	0.00	0.00	0.00	0.00	0.00	KOP
600.00	2.00	168.47	599.98	-1.71	0.35	1.75	2.00	2.00	0.00	
700.00	4.00	168.47	699.84	-6.84	1.40	6.98	2.00	2.00	0.00	
800.00	6.00	168.47	799.45	-15.38	3.14	15.69	2.00	2.00	0.00	
900.00	8.00	168.47	898.70	-27.32	5.57	27.88	2.00	2.00	0.00	
960.72	9.21	168.47	958.73	-36.22	7.39	36.97	2.00	2.00	0.00	HOLD
1000.00	9.21	168.47	997.51	-42.38	8.65	43.26	0.00	0.00	0.00	
1100.00	9.21	168.47	1096.22	-58.07	11.85	59.27	0.00	0.00	0.00	
1200.00	9.21	168.47	1194.93	-73.76	15.05	75.28	0.00	0.00	0.00	
1300.00	9.21	168.47	1293.64	-89.45	18.26	91.30	0.00	0.00	0.00	
1400.00	9.21	168.47	1392.35	-105.14	21.46	107.31	0.00	0.00	0.00	
1500.00	9.21	168.47	1491.06	-120.83	24.66	123.32	0.00	0.00	0.00	
1600.00	9.21	168.47	1589.77	-136.52	27.86	139.33	0.00	0.00	0.00	
1700.00	9.21	168.47	1688.48	-152.21	31.06	155.35	0.00	0.00	0.00	
1800.00	9.21	168.47	1787.19	-167.90	34.26	171.36	0.00	0.00	0.00	

# Weatherford International, Ltd.

## PLAN REPORT

**Company:** BERRY PETROLEUM COMPANY  
**Field:** GARFIELD COUNTY (NAD 83)  
**Site:** CHEVRON 35 PAD  
**Well:** CHEVRON #35-10D  
**Wellpath:** 1

**Date:** 8/22/2007 **Time:** 17:09:34 **Page:** 2  
**Co-ordinate(NE) Reference:** Well: CHEVRON #35-10D, True North  
**Vertical (TVD) Reference:** SITE 8115.0  
**Section (VS) Reference:** Well (0.00N,0.00E,168.47Azi)  
**Survey Calculation Method:** Minimum Curvature **Db:** Sybase

### Survey

MD ft	Incl deg	Azim deg	TVD ft	N/S ft	E/W ft	VS ft	DLS deg/100ft	Build deg/100ft	Turn deg/100ft	Comment
1900.00	9.21	168.47	1885.90	-183.59	37.47	187.37	0.00	0.00	0.00	
2000.00	9.21	168.47	1984.61	-199.28	40.67	203.38	0.00	0.00	0.00	
2100.00	9.21	168.47	2083.32	-214.97	43.87	219.40	0.00	0.00	0.00	
2200.00	9.21	168.47	2182.03	-230.66	47.07	235.41	0.00	0.00	0.00	
2300.00	9.21	168.47	2280.73	-246.35	50.27	251.42	0.00	0.00	0.00	
2400.00	9.21	168.47	2379.44	-262.03	53.48	267.44	0.00	0.00	0.00	
2500.00	9.21	168.47	2478.15	-277.72	56.68	283.45	0.00	0.00	0.00	
2600.00	9.21	168.47	2576.86	-293.41	59.88	299.46	0.00	0.00	0.00	
2691.31	9.21	168.47	2667.00	-307.74	62.80	314.08	0.00	0.00	0.00	WASATCH
2700.00	9.21	168.47	2675.57	-309.10	63.08	315.47	0.00	0.00	0.00	
2800.00	9.21	168.47	2774.28	-324.79	66.28	331.49	0.00	0.00	0.00	
2900.00	9.21	168.47	2872.99	-340.48	69.48	347.50	0.00	0.00	0.00	
3000.00	9.21	168.47	2971.70	-356.17	72.69	363.51	0.00	0.00	0.00	9 5/8"
3100.00	9.21	168.47	3070.41	-371.86	75.89	379.53	0.00	0.00	0.00	
3200.00	9.21	168.47	3169.12	-387.55	79.09	395.54	0.00	0.00	0.00	
3300.00	9.21	168.47	3267.83	-403.24	82.29	411.55	0.00	0.00	0.00	
3400.00	9.21	168.47	3366.54	-418.93	85.49	427.56	0.00	0.00	0.00	
3500.00	9.21	168.47	3465.25	-434.62	88.70	443.58	0.00	0.00	0.00	
3600.00	9.21	168.47	3563.96	-450.31	91.90	459.59	0.00	0.00	0.00	
3700.00	9.21	168.47	3662.67	-466.00	95.10	475.60	0.00	0.00	0.00	
3800.00	9.21	168.47	3761.38	-481.69	98.30	491.61	0.00	0.00	0.00	
3900.00	9.21	168.47	3860.09	-497.38	101.50	507.63	0.00	0.00	0.00	
4000.00	9.21	168.47	3958.80	-513.07	104.71	523.64	0.00	0.00	0.00	
4100.00	9.21	168.47	4057.51	-528.75	107.91	539.65	0.00	0.00	0.00	
4200.00	9.21	168.47	4156.22	-544.44	111.11	555.67	0.00	0.00	0.00	
4300.00	9.21	168.47	4254.93	-560.13	114.31	571.68	0.00	0.00	0.00	
4400.00	9.21	168.47	4353.64	-575.82	117.51	587.69	0.00	0.00	0.00	
4500.00	9.21	168.47	4452.35	-591.51	120.71	603.70	0.00	0.00	0.00	
4600.00	9.21	168.47	4551.06	-607.20	123.92	619.72	0.00	0.00	0.00	
4700.00	9.21	168.47	4649.77	-622.89	127.12	635.73	0.00	0.00	0.00	
4800.00	9.21	168.47	4748.48	-638.58	130.32	651.74	0.00	0.00	0.00	
4900.00	9.21	168.47	4847.19	-654.27	133.52	667.76	0.00	0.00	0.00	
5000.00	9.21	168.47	4945.89	-669.96	136.72	683.77	0.00	0.00	0.00	
5100.00	9.21	168.47	5044.60	-685.65	139.93	699.78	0.00	0.00	0.00	
5173.34	9.21	168.47	5117.00	-697.16	142.27	711.52	0.00	0.00	0.00	FORT UNION
5200.00	9.21	168.47	5143.31	-701.34	143.13	715.79	0.00	0.00	0.00	
5300.00	9.21	168.47	5242.02	-717.03	146.33	731.81	0.00	0.00	0.00	
5400.00	9.21	168.47	5340.73	-732.72	149.53	747.82	0.00	0.00	0.00	
5500.00	9.21	168.47	5439.44	-748.41	152.73	763.83	0.00	0.00	0.00	
5600.00	9.21	168.47	5538.15	-764.10	155.94	779.84	0.00	0.00	0.00	
5679.88	9.21	168.47	5617.00	-776.63	158.49	792.64	0.00	0.00	0.00	BASE FT. UNION
5700.00	9.21	168.47	5636.86	-779.78	159.14	795.86	0.00	0.00	0.00	
5800.00	9.21	168.47	5735.57	-795.47	162.34	811.87	0.00	0.00	0.00	
5900.00	9.21	168.47	5834.28	-811.16	165.54	827.88	0.00	0.00	0.00	
6000.00	9.21	168.47	5932.99	-826.85	168.74	843.90	0.00	0.00	0.00	
6100.00	9.21	168.47	6031.70	-842.54	171.94	859.91	0.00	0.00	0.00	
6200.00	9.21	168.47	6130.41	-858.23	175.15	875.92	0.00	0.00	0.00	
6300.00	9.21	168.47	6229.12	-873.92	178.35	891.93	0.00	0.00	0.00	
6361.21	9.21	168.47	6289.54	-883.52	180.31	901.73	0.00	0.00	0.00	DROP
6400.00	8.83	168.47	6327.85	-889.48	181.52	907.82	1.00	-1.00	0.00	
6500.00	7.83	168.47	6426.80	-903.67	184.42	922.30	1.00	-1.00	0.00	
6600.00	6.83	168.47	6525.98	-916.17	186.97	935.05	1.00	-1.00	0.00	
6700.00	5.83	168.47	6625.37	-926.96	189.17	946.07	1.00	-1.00	0.00	

# Weatherford International, Ltd.

## PLAN REPORT

**Company:** BERRY PETROLEUM COMPANY  
**Field:** GARFIELD COUNTY (NAD 83)  
**Site:** CHEVRON 35 PAD  
**Well:** CHEVRON #35-10D  
**Wellpath:** 1

**Date:** 8/22/2007      **Time:** 17:09:34      **Page:** 3  
**Co-ordinate(NE) Reference:** Well: CHEVRON #35-10D, True North  
**Vertical (TVD) Reference:** SITE 8115.0  
**Section (VS) Reference:** Well (0.00N,0.00E,168.47Azi)  
**Survey Calculation Method:** Minimum Curvature      **Db:** Sybase

### Survey

MD ft	Incl deg	Azim deg	TVD ft	N/S ft	E/W ft	VS ft	DLS deg/100ft	Build deg/100ft	Turn deg/100ft	Comment
6800.00	4.83	168.47	6724.93	-936.06	191.03	955.35	1.00	-1.00	0.00	
6900.00	3.83	168.47	6824.65	-943.45	192.54	962.90	1.00	-1.00	0.00	
6922.40	3.60	168.47	6847.00	-944.87	192.83	964.35	1.00	-1.00	0.00	OHIO CREEK
7000.00	2.83	168.47	6924.48	-949.13	193.70	968.70	1.00	-1.00	0.00	
7100.00	1.83	168.47	7024.39	-953.11	194.51	972.76	1.00	-1.00	0.00	
7200.00	0.83	168.47	7124.37	-955.38	194.97	975.07	1.00	-1.00	0.00	
7272.64	0.10	168.47	7197.00	-955.96	195.09	975.66	1.00	-1.00	0.00	MESAVERDE
7282.64	0.00	168.47	7207.00	-955.96	195.09	975.67	1.00	-1.00	0.00	APPROX TOP GAS
7300.00	0.00	168.47	7224.36	-955.96	195.09	975.67	0.00	0.00	0.00	
7400.00	0.00	168.47	7324.36	-955.96	195.09	975.67	0.00	0.00	0.00	
7500.00	0.00	168.47	7424.36	-955.96	195.09	975.67	0.00	0.00	0.00	
7600.00	0.00	168.47	7524.36	-955.96	195.09	975.67	0.00	0.00	0.00	
7700.00	0.00	168.47	7624.36	-955.96	195.09	975.67	0.00	0.00	0.00	
7800.00	0.00	168.47	7724.36	-955.96	195.09	975.67	0.00	0.00	0.00	
7900.00	0.00	168.47	7824.36	-955.96	195.09	975.67	0.00	0.00	0.00	
8000.00	0.00	168.47	7924.36	-955.96	195.09	975.67	0.00	0.00	0.00	
8100.00	0.00	168.47	8024.36	-955.96	195.09	975.67	0.00	0.00	0.00	
8200.00	0.00	168.47	8124.36	-955.96	195.09	975.67	0.00	0.00	0.00	
8300.00	0.00	168.47	8224.36	-955.96	195.09	975.67	0.00	0.00	0.00	
8400.00	0.00	168.47	8324.36	-955.96	195.09	975.67	0.00	0.00	0.00	
8500.00	0.00	168.47	8424.36	-955.96	195.09	975.67	0.00	0.00	0.00	
8600.00	0.00	168.47	8524.36	-955.96	195.09	975.67	0.00	0.00	0.00	
8700.00	0.00	168.47	8624.36	-955.96	195.09	975.67	0.00	0.00	0.00	
8800.00	0.00	168.47	8724.36	-955.96	195.09	975.67	0.00	0.00	0.00	
8900.00	0.00	168.47	8824.36	-955.96	195.09	975.67	0.00	0.00	0.00	
9000.00	0.00	168.47	8924.36	-955.96	195.09	975.67	0.00	0.00	0.00	
9100.00	0.00	168.47	9024.36	-955.96	195.09	975.67	0.00	0.00	0.00	
9200.00	0.00	168.47	9124.36	-955.96	195.09	975.67	0.00	0.00	0.00	
9300.00	0.00	168.47	9224.36	-955.96	195.09	975.67	0.00	0.00	0.00	
9400.00	0.00	168.47	9324.36	-955.96	195.09	975.67	0.00	0.00	0.00	
9500.00	0.00	168.47	9424.36	-955.96	195.09	975.67	0.00	0.00	0.00	
9600.00	0.00	168.47	9524.36	-955.96	195.09	975.67	0.00	0.00	0.00	
9700.00	0.00	168.47	9624.36	-955.96	195.09	975.67	0.00	0.00	0.00	
9782.64	0.00	168.47	9707.00	-955.96	195.09	975.67	0.00	0.00	0.00	CAMEO
9800.00	0.00	168.47	9724.36	-955.96	195.09	975.67	0.00	0.00	0.00	
9900.00	0.00	168.47	9824.36	-955.96	195.09	975.67	0.00	0.00	0.00	
10000.00	0.00	168.47	9924.36	-955.96	195.09	975.67	0.00	0.00	0.00	
10100.00	0.00	168.47	10024.36	-955.96	195.09	975.67	0.00	0.00	0.00	
10200.00	0.00	168.47	10124.36	-955.96	195.09	975.67	0.00	0.00	0.00	
10282.64	0.00	168.47	10207.00	-955.96	195.09	975.67	0.00	0.00	0.00	ROLLINS SS
10300.00	0.00	168.47	10224.36	-955.96	195.09	975.67	0.00	0.00	0.00	
10400.00	0.00	168.47	10324.36	-955.96	195.09	975.67	0.00	0.00	0.00	
10432.64	0.00	168.47	10357.00	-955.96	195.09	975.67	0.00	0.00	0.00	PBHL_35-10D

### Annotation

MD ft	TVD ft	
500.00	500.00	KOP
960.72	958.74	HOLD
6361.21	6289.54	DROP
7282.64	7207.00	HOLD
10432.64	10357.00	PBHL

# Weatherford International, Ltd.

## PLAN REPORT

**Company:** BERRY PETROLEUM COMPANY  
**Field:** GARFIELD COUNTY (NAD 83)  
**Site:** CHEVRON 35 PAD  
**Well:** CHEVRON #35-10D  
**Wellpath:** 1

**Date:** 8/22/2007      **Time:** 17:09:34      **Page:** 4  
**Co-ordinate(NE) Reference:** Well: CHEVRON #35-10D, True North  
**Vertical (TVD) Reference:** SITE 8115.0  
**Section (VS) Reference:** Well (0.00N,0.00E,168.47Azi)  
**Survey Calculation Method:** Minimum Curvature      **Db:** Sybase

## Targets

Name	Description Dip.	TVD ft	+N/-S ft	+E/-W ft	Map Northing ft	Map Easting ft	<---- Latitude ----> Deg Min Sec	<--- Longitude ---> Deg Min Sec
PBHL_35-10D -Rectangle (100x200) -Plan hit target		10357.00	-955.96	195.09	1641845.862254	820.70	39 33 57.161 N	108 8 37.017 W

# Weatherford International, Ltd.

## Anticollision Report

<b>Company:</b>	BERRY PETROLEUM COMPANY	<b>Date:</b>	8/22/2007	<b>Time:</b>	17:17:27	<b>Page:</b>	1
<b>Field:</b>	GARFIELD COUNTY (NAD 83)	<b>Co-ordinate(NE) Reference:</b>	Well: CHEVRON #35-10D, True North				
<b>Reference Site:</b>	CHEVRON 35 PAD	<b>Vertical (TVD) Reference:</b>	SITE 8115.0				
<b>Reference Well:</b>	CHEVRON #35-10D						
<b>Reference Wellpath:</b>	1	<b>Db:</b> Sybase					

<b>NO GLOBAL SCAN: Using user defined selection &amp; scan criteria</b>				<b>Reference:</b>	Plan: Plan #1
<b>Interpolation Method:</b>	MD	<b>Interval:</b>	100.00 ft	<b>Error Model:</b>	ISCWSA Ellipse
<b>Depth Range:</b>	0.00 to	10432.64 ft		<b>Scan Method:</b>	Closest Approach 3D
<b>Maximum Radius:</b>	10000.00 ft			<b>Error Surface:</b>	Ellipse

<b>Plan:</b> Plan #1	<b>Date Composed:</b>	8/22/2007
	<b>Version:</b>	1
<b>Principal:</b> Yes	<b>Tied-to:</b>	From Surface

**Summary**

<----- Offset Wellpath ----->	Reference	Offset	Ctr-Ctr	Edge	Separation	Warning	
Site	Well	Wellpath	MD ft	MD ft	Distance ft	Distance ft	Factor
CHEVRON 35 PAD	CHEVRON #35-11D	1 V0 Plan: Plan #1 V1	600.00	599.98	15.78	13.37	6.55
CHEVRON 35 PAD	CHEVRON 35-9D	1 V0 Plan: Plan #1 V1	1000.00	996.92	28.63	24.22	6.49

**Site:** CHEVRON 35 PAD  
**Well:** CHEVRON #35-11D  
**Wellpath:** 1 V0 Plan: Plan #1 V1

**Inter-Site Error:** 0.00 ft

Reference	Offset	Semi-Major Axis			Offset Location		Ctr-Ctr	Edge	Separation	Warning	
MD	TVD	Ref	Offset	TFO-HS	North	East	Distance	Distance	Factor		
ft	ft	ft	ft	deg	ft	ft	ft	ft			
0.00	0.00	0.00	0.00	54.76	8.65	12.25	15.00			No Data	
100.00	100.00	100.00	100.00	0.08	0.08	54.76	8.65	12.25	15.00	14.84	92.67
200.00	200.00	200.00	200.00	0.31	0.31	54.76	8.65	12.25	15.00	14.39	24.53
300.00	300.00	300.00	300.00	0.53	0.53	54.76	8.65	12.25	15.00	13.94	14.14
400.00	400.00	400.00	400.00	0.76	0.76	54.76	8.65	12.25	15.00	13.49	9.93
500.00	500.00	500.00	500.00	0.98	0.98	54.76	8.65	12.25	15.00	13.04	7.65
600.00	599.98	599.98	599.98	1.21	1.20	240.50	8.65	12.25	15.78	13.37	6.55
700.00	699.84	699.84	699.84	1.44	1.43	226.62	8.65	12.25	18.92	16.05	6.61
800.00	799.45	799.59	799.59	1.69	1.65	212.52	8.59	12.27	25.65	22.33	7.73
900.00	898.70	899.98	899.95	1.96	1.88	204.12	6.26	13.02	34.42	30.64	9.12
1000.00	997.51	1000.74	1000.52	2.28	2.12	199.76	0.56	14.84	43.49	39.26	10.27
1100.00	1096.22	1102.01	1101.34	2.61	2.37	198.28	-8.56	17.77	50.13	45.42	10.65
1200.00	1194.93	1201.94	1200.62	2.95	2.63	197.92	-19.33	21.22	55.08	49.89	10.62
1300.00	1293.64	1301.81	1299.85	3.30	2.90	197.63	-30.09	24.67	60.03	54.36	10.58
1400.00	1392.35	1401.69	1399.09	3.66	3.19	197.38	-40.85	28.12	64.99	58.82	10.54
1500.00	1491.06	1501.57	1498.32	4.02	3.47	197.16	-51.61	31.57	69.94	63.28	10.50
1600.00	1589.77	1601.44	1597.56	4.39	3.76	196.98	-62.37	35.02	74.90	67.74	10.46
1700.00	1688.48	1701.32	1696.79	4.75	4.06	196.82	-73.14	38.47	79.85	72.20	10.43
1800.00	1787.19	1801.20	1796.03	5.12	4.35	196.67	-83.90	41.93	84.81	76.66	10.40
1900.00	1885.90	1901.07	1895.27	5.49	4.65	196.54	-94.66	45.38	89.77	81.11	10.37
2000.00	1984.61	2000.95	1994.50	5.87	4.95	196.43	-105.42	48.83	94.73	85.57	10.34
2100.00	2083.32	2100.83	2093.74	6.24	5.26	196.33	-116.18	52.28	99.69	90.03	10.32
2200.00	2182.03	2200.71	2192.97	6.61	5.56	196.23	-126.95	55.73	104.65	94.48	10.30
2300.00	2280.73	2300.58	2292.21	6.99	5.86	196.15	-137.71	59.18	109.60	98.94	10.28
2400.00	2379.44	2400.46	2391.44	7.36	6.17	196.07	-148.47	62.63	114.56	103.39	10.26
2500.00	2478.15	2500.34	2490.68	7.74	6.48	196.00	-159.23	66.08	119.52	107.85	10.24
2600.00	2576.86	2600.21	2589.91	8.11	6.78	195.94	-169.99	69.53	124.48	112.30	10.22
2700.00	2675.57	2700.09	2689.15	8.49	7.09	195.88	-180.75	72.98	129.44	116.76	10.20
2800.00	2774.28	2799.97	2788.38	8.87	7.40	195.82	-191.52	76.43	134.40	121.21	10.19
2900.00	2872.99	2899.84	2887.62	9.24	7.71	195.77	-202.28	79.88	139.36	125.67	10.18
3000.00	2971.70	2999.72	2986.85	9.62	8.02	195.72	-213.04	83.33	144.32	130.12	10.16
3100.00	3070.41	3099.60	3086.09	10.00	8.32	195.67	-223.80	86.78	149.28	134.58	10.15
3200.00	3169.12	3199.47	3185.33	10.38	8.63	195.63	-234.56	90.23	154.25	139.03	10.14
3300.00	3267.83	3299.35	3284.56	10.75	8.94	195.59	-245.33	93.69	159.21	143.48	10.13
3400.00	3366.54	3399.23	3383.80	11.13	9.25	195.55	-256.09	97.14	164.17	147.94	10.12
3500.00	3465.25	3499.10	3483.03	11.51	9.56	195.52	-266.85	100.59	169.13	152.39	10.11

# Weatherford International, Ltd.

## Anticollision Report

<b>Company:</b>	BERRY PETROLEUM COMPANY	<b>Date:</b>	8/22/2007	<b>Time:</b>	17:17:27	<b>Page:</b>	2
<b>Field:</b>	GARFIELD COUNTY (NAD 83)	<b>Co-ordinate(NE) Reference:</b>	Well: CHEVRON #35-10D, True North				
<b>Reference Site:</b>	CHEVRON 35 PAD	<b>Vertical (TVD) Reference:</b>	SITE 8115.0				
<b>Reference Well:</b>	CHEVRON #35-10D						
<b>Reference Wellpath:</b>	1	<b>Db:</b> Sybase					

**Site:** CHEVRON 35 PAD  
**Well:** CHEVRON #35-11D  
**Wellpath:** 1 V0 Plan: Plan #1 V1

**Inter-Site Error:** 0.00 ft

Reference		Offset		Semi-Major Axis			Offset Location		Ctr-Ctr Distance ft	Edge Distance ft	Separation Factor	Warning
MD ft	TVD ft	MD ft	TVD ft	Ref ft	Offset ft	TFO-HS deg	North ft	East ft				
3600.00	3563.96	3598.98	3582.27	11.89	9.87	195.49	-277.61	104.04	174.09	156.85	10.10	
3700.00	3662.67	3698.86	3681.50	12.27	10.18	195.46	-288.37	107.49	179.05	161.30	10.09	
3800.00	3761.38	3798.73	3780.74	12.65	10.49	195.43	-299.13	110.94	184.01	165.75	10.08	
3900.00	3860.09	3898.61	3879.97	13.03	10.81	195.40	-309.90	114.39	188.97	170.21	10.07	
4000.00	3958.80	3998.49	3979.21	13.40	11.12	195.37	-320.66	117.84	193.93	174.66	10.06	
4100.00	4057.51	4098.37	4078.44	13.78	11.43	195.35	-331.42	121.29	198.89	179.12	10.06	
4200.00	4156.22	4198.24	4177.68	14.16	11.74	195.32	-342.18	124.74	203.85	183.57	10.05	
4300.00	4254.93	4298.12	4276.91	14.54	12.05	195.30	-352.94	128.19	208.82	188.02	10.04	
4400.00	4353.64	4398.00	4376.15	14.92	12.36	195.28	-363.71	131.64	213.78	192.48	10.04	
4500.00	4452.35	4497.87	4475.38	15.30	12.67	195.26	-374.47	135.09	218.74	196.93	10.03	
4600.00	4551.06	4597.75	4574.62	15.68	12.99	195.24	-385.23	138.54	223.70	201.38	10.02	
4700.00	4649.77	4697.63	4673.86	16.06	13.30	195.22	-395.99	142.00	228.66	205.84	10.02	
4800.00	4748.48	4797.50	4773.09	16.44	13.61	195.20	-406.75	145.45	233.62	210.29	10.01	
4900.00	4847.19	4897.38	4872.33	16.82	13.92	195.18	-417.51	148.90	238.58	214.74	10.01	
5000.00	4945.89	4997.26	4971.56	17.20	14.23	195.17	-428.28	152.35	243.54	219.20	10.00	
5100.00	5044.60	5097.13	5070.80	17.58	14.54	195.15	-439.04	155.80	248.51	223.65	10.00	
5200.00	5143.31	5197.01	5170.03	17.96	14.86	195.13	-449.80	159.25	253.47	228.10	9.99	
5300.00	5242.02	5296.89	5269.27	18.34	15.17	195.12	-460.56	162.70	258.43	232.56	9.99	
5400.00	5340.73	5396.76	5368.50	18.71	15.48	195.10	-471.32	166.15	263.39	237.01	9.99	
5500.00	5439.44	5496.64	5467.74	19.09	15.79	195.09	-482.08	169.60	268.35	241.46	9.98	
5600.00	5538.15	5596.52	5566.97	19.47	16.10	195.08	-492.85	173.05	273.31	245.92	9.98	
5700.00	5636.86	5696.39	5666.21	19.85	16.42	195.06	-503.61	176.50	278.27	250.37	9.97	
5800.00	5735.57	5796.27	5765.44	20.23	16.73	195.05	-514.37	179.95	283.24	254.82	9.97	
5900.00	5834.28	5896.15	5864.68	20.61	17.04	195.04	-525.13	183.40	288.20	259.28	9.97	
6000.00	5932.99	5996.02	5963.92	20.99	17.35	195.03	-535.89	186.85	293.16	263.73	9.96	
6100.00	6031.70	6095.90	6063.15	21.37	17.67	195.02	-546.66	190.30	298.12	268.19	9.96	
6200.00	6130.41	6195.78	6162.39	21.75	17.98	195.01	-557.42	193.76	303.08	272.64	9.96	
6300.00	6229.12	6295.66	6261.62	22.13	18.29	195.00	-568.18	197.21	308.04	277.09	9.95	
6400.00	6327.85	6395.54	6360.86	22.49	18.60	194.99	-578.94	200.66	312.88	281.43	9.95	
6500.00	6426.80	6495.48	6460.16	22.74	18.92	195.04	-589.71	204.11	316.34	284.44	9.92	
6600.00	6525.98	6595.46	6559.50	22.97	19.23	195.18	-600.48	207.56	318.13	285.76	9.83	
6700.00	6625.37	6690.98	6654.48	23.19	19.48	195.35	-610.16	210.67	318.86	286.08	9.73	
6800.00	6724.93	6786.06	6749.17	23.39	19.67	195.49	-618.30	213.28	319.46	286.31	9.64	
6900.00	6824.65	6881.13	6843.98	23.57	19.85	195.61	-624.94	215.41	319.91	286.41	9.55	
7000.00	6924.48	6976.20	6938.90	23.74	20.01	195.71	-630.09	217.06	320.22	286.40	9.47	
7100.00	7024.39	7071.27	7033.89	23.89	20.17	195.77	-633.73	218.23	320.40	286.27	9.39	
7200.00	7124.37	7166.34	7128.93	24.02	20.31	195.82	-635.88	218.91	320.43	286.01	9.31	
7300.00	7224.36	7261.77	7224.36	24.14	20.44	4.30	-636.52	219.12	320.35	286.73	9.53	
7400.00	7324.36	7361.77	7324.36	24.29	20.61	4.30	-636.52	219.12	320.35	286.33	9.42	
7500.00	7424.36	7461.77	7424.36	24.44	20.79	4.30	-636.52	219.12	320.35	285.91	9.30	
7600.00	7524.36	7561.77	7524.36	24.59	20.97	4.30	-636.52	219.12	320.35	285.49	9.19	
7700.00	7624.36	7661.77	7624.36	24.75	21.15	4.30	-636.52	219.12	320.35	285.07	9.08	
7800.00	7724.36	7761.77	7724.36	24.90	21.33	4.30	-636.52	219.12	320.35	284.66	8.98	
7900.00	7824.36	7861.77	7824.36	25.06	21.51	4.30	-636.52	219.12	320.35	284.24	8.87	
8000.00	7924.36	7961.77	7924.36	25.21	21.69	4.30	-636.52	219.12	320.35	283.82	8.77	
8100.00	8024.36	8061.77	8024.36	25.37	21.88	4.30	-636.52	219.12	320.35	283.40	8.67	
8200.00	8124.36	8161.77	8124.36	25.53	22.06	4.30	-636.52	219.12	320.35	282.97	8.57	
8300.00	8224.36	8261.77	8224.36	25.69	22.24	4.30	-636.52	219.12	320.35	282.55	8.48	
8400.00	8324.36	8361.77	8324.36	25.85	22.43	4.30	-636.52	219.12	320.35	282.13	8.38	
8500.00	8424.36	8461.77	8424.36	26.01	22.62	4.30	-636.52	219.12	320.35	281.71	8.29	
8600.00	8524.36	8561.77	8524.36	26.17	22.80	4.30	-636.52	219.12	320.35	281.28	8.20	



# Weatherford International, Ltd.

## Anticollision Report

<b>Company:</b> BERRY PETROLEUM COMPANY	<b>Date:</b> 8/22/2007	<b>Time:</b> 17:17:27	<b>Page:</b> 3
<b>Field:</b> GARFIELD COUNTY (NAD 83)			
<b>Reference Site:</b> CHEVRON 35 PAD	<b>Co-ordinate(NE) Reference:</b> Well: CHEVRON #35-10D, True North		
<b>Reference Well:</b> CHEVRON #35-10D	<b>Vertical (TVD) Reference:</b> SITE 8115.0		
<b>Reference Wellpath:</b> 1	<b>Db:</b> Sybase		

**Site:** CHEVRON 35 PAD  
**Well:** CHEVRON #35-11D  
**Wellpath:** 1 V0 Plan: Plan #1 V1

**Inter-Site Error:** 0.00 ft

Reference		Offset		Semi-Major Axis			Offset Location		Ctr-Ctr Distance	Edge Distance	Separation Factor	Warning
MD	TVD	MD	TVD	Ref	Offset	TFO-HS	North	East				
ft	ft	ft	ft	ft	ft	deg	ft	ft	ft	ft		
8700.00	8624.36	8661.77	8624.36	26.34	22.99	4.30	-636.52	219.12	320.35	280.86	8.11	
8800.00	8724.36	8761.77	8724.36	26.50	23.18	4.30	-636.52	219.12	320.35	280.43	8.03	
8900.00	8824.36	8861.77	8824.36	26.67	23.37	4.30	-636.52	219.12	320.35	280.01	7.94	
9000.00	8924.36	8961.77	8924.36	26.83	23.56	4.30	-636.52	219.12	320.35	279.58	7.86	
9100.00	9024.36	9061.77	9024.36	27.00	23.75	4.30	-636.52	219.12	320.35	279.15	7.78	
9200.00	9124.36	9161.77	9124.36	27.17	23.94	4.30	-636.52	219.12	320.35	278.73	7.70	
9300.00	9224.36	9261.77	9224.36	27.34	24.13	4.30	-636.52	219.12	320.35	278.30	7.62	
9400.00	9324.36	9361.77	9324.36	27.51	24.32	4.30	-636.52	219.12	320.35	277.87	7.54	
9500.00	9424.36	9461.77	9424.36	27.68	24.51	4.30	-636.52	219.12	320.35	277.44	7.47	
9600.00	9524.36	9561.77	9524.36	27.85	24.71	4.30	-636.52	219.12	320.35	277.01	7.39	
9700.00	9624.36	9661.77	9624.36	28.02	24.90	4.30	-636.52	219.12	320.35	276.59	7.32	
9800.00	9724.36	9761.77	9724.36	28.19	25.10	4.30	-636.52	219.12	320.35	276.16	7.25	
9900.00	9824.36	9861.77	9824.36	28.37	25.29	4.30	-636.52	219.12	320.35	275.73	7.18	
10000.00	9924.36	9961.77	9924.36	28.54	25.49	4.30	-636.52	219.12	320.35	275.30	7.11	
10100.00	10024.36	10061.77	10024.36	28.71	25.68	4.30	-636.52	219.12	320.35	274.86	7.04	
10200.00	10124.36	10161.77	10124.36	28.89	25.88	4.30	-636.52	219.12	320.35	274.43	6.98	
10300.00	10224.36	10261.77	10224.36	29.07	26.07	4.30	-636.52	219.12	320.35	274.00	6.91	
10400.00	10324.36	10361.77	10324.36	29.24	26.27	4.30	-636.52	219.12	320.35	273.57	6.85	
10432.64	10357.00	10394.41	10357.00	29.30	26.34	4.30	-636.52	219.12	320.35	273.43	6.83	

**Site:** CHEVRON 35 PAD  
**Well:** CHEVRON 35-9D  
**Wellpath:** 1 V0 Plan: Plan #1 V1

**Inter-Site Error:** 0.00 ft

Reference		Offset		Semi-Major Axis			Offset Location		Ctr-Ctr Distance	Edge Distance	Separation Factor	Warning
MD	TVD	MD	TVD	Ref	Offset	TFO-HS	North	East				
ft	ft	ft	ft	ft	ft	deg	ft	ft	ft	ft		
0.00	0.00	0.00	0.00	0.00	0.00	234.76	-8.65	-12.25	15.00			No Data
100.00	100.00	100.00	100.00	0.08	0.08	234.76	-8.65	-12.25	15.00	14.84	92.67	
200.00	200.00	200.00	200.00	0.31	0.31	234.76	-8.65	-12.25	15.00	14.39	24.53	
300.00	300.00	300.00	300.00	0.53	0.53	234.76	-8.65	-12.25	15.00	13.94	14.14	
400.00	400.00	400.00	400.00	0.76	0.76	234.76	-8.65	-12.25	15.00	13.49	9.93	
500.00	500.00	499.78	499.77	0.98	0.98	231.66	-9.63	-12.17	15.52	13.56	7.92	
600.00	599.98	599.40	599.29	1.21	1.21	56.37	-13.94	-11.84	17.28	14.87	7.16	
700.00	699.84	698.93	698.51	1.44	1.46	51.74	-21.70	-11.23	19.55	16.67	6.80	
800.00	799.45	798.36	797.30	1.69	1.73	48.91	-32.88	-10.36	22.21	18.85	6.61	
900.00	898.70	897.69	895.55	1.96	2.03	47.41	-47.45	-9.23	25.19	21.32	6.51	
1000.00	997.51	996.92	993.13	2.28	2.38	46.50	-65.38	-7.84	28.63	24.22	6.49	
1100.00	1096.22	1096.44	1090.44	2.61	2.77	43.57	-86.16	-6.22	33.89	28.92	6.81	
1200.00	1194.93	1196.28	1188.00	2.95	3.19	41.18	-107.28	-4.58	39.45	33.91	7.12	
1300.00	1293.64	1296.11	1285.56	3.30	3.61	39.38	-128.40	-2.93	45.07	38.96	7.37	
1400.00	1392.35	1395.94	1383.12	3.66	4.05	37.98	-149.52	-1.29	50.72	44.04	7.59	
1500.00	1491.06	1495.78	1480.68	4.02	4.49	36.86	-170.65	0.35	56.39	49.14	7.77	
1600.00	1589.77	1595.61	1578.24	4.39	4.93	35.95	-191.77	1.99	62.08	54.26	7.93	
1700.00	1688.48	1695.44	1675.80	4.75	5.38	35.19	-212.89	3.64	67.79	59.39	8.07	
1800.00	1787.19	1795.28	1773.36	5.12	5.82	34.55	-234.01	5.28	73.50	64.52	8.19	
1900.00	1885.90	1895.11	1870.92	5.49	6.27	34.00	-255.14	6.92	79.22	69.67	8.29	
2000.00	1984.61	1994.94	1968.48	5.87	6.73	33.53	-276.26	8.57	84.95	74.82	8.39	
2100.00	2083.32	2094.78	2066.04	6.24	7.18	33.11	-297.38	10.21	90.69	79.98	8.47	
2200.00	2182.03	2194.61	2163.60	6.61	7.63	32.75	-318.51	11.85	96.42	85.14	8.55	
2300.00	2280.73	2294.44	2261.16	6.99	8.09	32.42	-339.63	13.50	102.16	90.31	8.62	
2400.00	2379.44	2394.28	2358.72	7.36	8.54	32.13	-360.75	15.14	107.91	95.47	8.68	

# Weatherford International, Ltd.

## Anticollision Report

<b>Company:</b> BERRY PETROLEUM COMPANY	<b>Date:</b> 8/22/2007	<b>Time:</b> 17:17:27	<b>Page:</b> 4
<b>Field:</b> GARFIELD COUNTY (NAD 83)			
<b>Reference Site:</b> CHEVRON 35 PAD	<b>Co-ordinate(NE) Reference:</b> Well: CHEVRON #35-10D, True North		
<b>Reference Well:</b> CHEVRON #35-10D	<b>Vertical (TVD) Reference:</b> SITE 8115.0		
<b>Reference Wellpath:</b> 1	<b>Db:</b> Sybase		

**Site:** CHEVRON 35 PAD  
**Well:** CHEVRON 35-9D  
**Wellpath:** 1 V0 Plan: Plan #1 V1

**Inter-Site Error:** 0.00 ft

Reference		Offset		Semi-Major Axis		Offset Location		Ctr-Ctr	Edge	Separation	Warning
MD	TVD	MD	TVD	Ref	Offset	TFO-HS	North	East	Distance	Distance	
ft	ft	ft	ft	ft	ft	deg	ft	ft	ft	ft	
2500.00	2478.15	2494.11	2456.28	7.74	9.00	31.87	-381.87	16.78	113.65	100.64	8.73
2600.00	2576.86	2593.94	2553.84	8.11	9.46	31.64	-403.00	18.43	119.40	105.81	8.79
2700.00	2675.57	2693.78	2651.40	8.49	9.91	31.42	-424.12	20.07	125.15	110.98	8.83
2800.00	2774.28	2793.61	2748.96	8.87	10.37	31.23	-445.24	21.71	130.91	116.16	8.88
2900.00	2872.99	2893.44	2846.51	9.24	10.83	31.05	-466.36	23.35	136.66	121.33	8.92
3000.00	2971.70	2993.28	2944.07	9.62	11.29	30.89	-487.49	25.00	142.41	126.51	8.96
3100.00	3070.41	3093.11	3041.63	10.00	11.74	30.73	-508.61	26.64	148.17	131.69	8.99
3200.00	3169.12	3192.95	3139.19	10.38	12.20	30.59	-529.73	28.28	153.92	136.86	9.02
3300.00	3267.83	3292.78	3236.75	10.75	12.66	30.46	-550.85	29.93	159.68	142.04	9.05
3400.00	3366.54	3392.61	3334.31	11.13	13.12	30.34	-571.98	31.57	165.44	147.22	9.08
3500.00	3465.25	3492.45	3431.87	11.51	13.58	30.23	-593.10	33.21	171.20	152.40	9.11
3600.00	3563.96	3592.28	3529.43	11.89	14.04	30.13	-614.22	34.86	176.96	157.58	9.13
3700.00	3662.67	3692.11	3626.99	12.27	14.50	30.03	-635.35	36.50	182.72	162.77	9.16
3800.00	3761.38	3791.95	3724.55	12.65	14.96	29.93	-656.47	38.14	188.48	167.95	9.18
3900.00	3860.09	3891.78	3822.11	13.03	15.42	29.85	-677.59	39.78	194.24	173.13	9.20
4000.00	3958.80	3991.61	3919.67	13.40	15.88	29.76	-698.71	41.43	200.00	178.31	9.22
4100.00	4057.51	4091.45	4017.23	13.78	16.34	29.69	-719.84	43.07	205.76	183.49	9.24
4200.00	4156.22	4191.28	4114.79	14.16	16.80	29.61	-740.96	44.71	211.53	188.68	9.26
4300.00	4254.93	4291.11	4212.35	14.54	17.26	29.54	-762.08	46.36	217.29	193.86	9.27
4400.00	4353.64	4390.95	4309.91	14.92	17.72	29.48	-783.20	48.00	223.05	199.04	9.29
4500.00	4452.35	4490.78	4407.47	15.30	18.18	29.41	-804.33	49.64	228.81	204.23	9.31
4600.00	4551.06	4590.61	4505.03	15.68	18.64	29.36	-825.45	51.29	234.58	209.41	9.32
4700.00	4649.77	4690.45	4602.59	16.06	19.10	29.30	-846.57	52.93	240.34	214.60	9.34
4800.00	4748.48	4790.28	4700.15	16.44	19.56	29.24	-867.70	54.57	246.10	219.78	9.35
4900.00	4847.19	4890.11	4797.71	16.82	20.02	29.19	-888.82	56.22	251.87	224.97	9.36
5000.00	4945.89	4989.95	4895.26	17.20	20.48	29.14	-909.94	57.86	257.63	230.15	9.37
5100.00	5044.60	5089.78	4992.82	17.58	20.94	29.10	-931.06	59.50	263.40	235.33	9.39
5200.00	5143.31	5189.61	5090.38	17.96	21.40	29.05	-952.19	61.14	269.16	240.52	9.40
5300.00	5242.02	5289.45	5187.94	18.34	21.86	29.01	-973.31	62.79	274.93	245.71	9.41
5400.00	5340.73	5389.28	5285.50	18.71	22.32	28.97	-994.43	64.43	280.69	250.89	9.42
5500.00	5439.44	5489.12	5383.06	19.09	22.78	28.93	-1015.55	66.07	286.46	256.08	9.43
5600.00	5538.15	5588.95	5480.62	19.47	23.24	28.89	-1036.68	67.72	292.22	261.26	9.44
5700.00	5636.86	5688.78	5578.18	19.85	23.70	28.85	-1057.80	69.36	297.99	266.45	9.45
5800.00	5735.57	5788.62	5675.74	20.23	24.16	28.82	-1078.92	71.00	303.75	271.63	9.46
5900.00	5834.28	5888.45	5773.30	20.61	24.62	28.78	-1100.04	72.65	309.52	276.82	9.47
6000.00	5932.99	5988.28	5870.86	20.99	25.08	28.75	-1121.17	74.29	315.28	282.01	9.47
6100.00	6031.70	6088.12	5968.42	21.37	25.54	28.72	-1142.29	75.93	321.05	287.19	9.48
6200.00	6130.41	6193.37	6071.47	21.75	25.88	28.75	-1163.67	77.59	326.01	291.60	9.48
6300.00	6229.12	6298.92	6175.18	22.13	26.19	28.90	-1183.20	79.11	329.26	294.29	9.42
6400.00	6327.85	6404.54	6279.30	22.49	26.48	29.17	-1200.84	80.49	330.92	295.39	9.31
6500.00	6426.80	6510.17	6383.75	22.74	26.75	29.43	-1216.57	81.71	332.12	296.10	9.22
6600.00	6525.98	6615.83	6488.49	22.97	27.01	29.67	-1230.37	82.78	333.14	296.66	9.13
6700.00	6625.37	6721.49	6593.48	23.19	27.24	29.88	-1242.25	83.71	333.98	297.06	9.05
6800.00	6724.93	6827.16	6698.68	23.39	27.45	30.06	-1252.20	84.48	334.64	297.32	8.97
6900.00	6824.65	6932.84	6804.05	23.57	27.64	30.21	-1260.21	85.10	335.11	297.42	8.89
7000.00	6924.48	7038.52	6909.56	23.74	27.81	30.33	-1266.28	85.58	335.40	297.36	8.82
7100.00	7024.39	7144.21	7015.16	23.89	27.95	30.42	-1270.41	85.90	335.50	297.15	8.75
7200.00	7124.37	7249.88	7120.81	24.02	28.08	30.48	-1272.60	86.07	335.41	296.79	8.68
7300.00	7224.36	7353.44	7224.36	24.14	28.19	198.97	-1272.98	86.10	335.23	298.14	9.04
7400.00	7324.36	7453.44	7324.36	24.29	28.31	198.97	-1272.98	86.10	335.23	297.78	8.95
7500.00	7424.36	7553.44	7424.36	24.44	28.44	198.97	-1272.98	86.10	335.23	297.41	8.86

# Weatherford International, Ltd.

## Anticollision Report

<b>Company:</b> BERRY PETROLEUM COMPANY	<b>Date:</b> 8/22/2007	<b>Time:</b> 17:17:27	<b>Page:</b> 5
<b>Field:</b> GARFIELD COUNTY (NAD 83)			
<b>Reference Site:</b> CHEVRON 35 PAD	<b>Co-ordinate(NE) Reference:</b> Well: CHEVRON #35-10D, True North		
<b>Reference Well:</b> CHEVRON #35-10D	<b>Vertical (TVD) Reference:</b> SITE 8115.0		
<b>Reference Wellpath:</b> 1	<b>Db:</b> Sybase		

**Site:** CHEVRON 35 PAD  
**Well:** CHEVRON 35-9D  
**Wellpath:** 1 V0 Plan: Plan #1 V1

**Inter-Site Error:** 0.00 ft

Reference		Offset		Semi-Major Axis			Offset Location		Ctr-Ctr Distance ft	Edge Distance ft	Separation Factor	Warning
MD ft	TVD ft	MD ft	TVD ft	Ref ft	Offset ft	TFO-HS deg	North ft	East ft				
7600.00	7524.36	7653.44	7524.36	24.59	28.57	198.97	-1272.98	86.10	335.23	297.03	8.78	
7700.00	7624.36	7753.44	7624.36	24.75	28.70	198.97	-1272.98	86.10	335.23	296.65	8.69	
7800.00	7724.36	7853.44	7724.36	24.90	28.83	198.97	-1272.98	86.10	335.23	296.28	8.61	
7900.00	7824.36	7953.44	7824.36	25.06	28.97	198.97	-1272.98	86.10	335.23	295.90	8.52	
8000.00	7924.36	8053.44	7924.36	25.21	29.10	198.97	-1272.98	86.10	335.23	295.52	8.44	
8100.00	8024.36	8153.44	8024.36	25.37	29.24	198.97	-1272.98	86.10	335.23	295.13	8.36	
8200.00	8124.36	8253.44	8124.36	25.53	29.38	198.97	-1272.98	86.10	335.23	294.75	8.28	
8300.00	8224.36	8353.44	8224.36	25.69	29.51	198.97	-1272.98	86.10	335.23	294.37	8.20	
8400.00	8324.36	8453.44	8324.36	25.85	29.65	198.97	-1272.98	86.10	335.23	293.98	8.13	
8500.00	8424.36	8553.44	8424.36	26.01	29.79	198.97	-1272.98	86.10	335.23	293.59	8.05	
8600.00	8524.36	8653.44	8524.36	26.17	29.94	198.97	-1272.98	86.10	335.23	293.20	7.98	
8700.00	8624.36	8753.44	8624.36	26.34	30.08	198.97	-1272.98	86.10	335.23	292.81	7.90	
8800.00	8724.36	8853.44	8724.36	26.50	30.22	198.97	-1272.98	86.10	335.23	292.42	7.83	
8900.00	8824.36	8953.44	8824.36	26.67	30.37	198.97	-1272.98	86.10	335.23	292.03	7.76	
9000.00	8924.36	9053.44	8924.36	26.83	30.51	198.97	-1272.98	86.10	335.23	291.64	7.69	
9100.00	9024.36	9153.44	9024.36	27.00	30.66	198.97	-1272.98	86.10	335.23	291.24	7.62	
9200.00	9124.36	9253.44	9124.36	27.17	30.81	198.97	-1272.98	86.10	335.23	290.85	7.55	
9300.00	9224.36	9353.44	9224.36	27.34	30.95	198.97	-1272.98	86.10	335.23	290.45	7.49	
9400.00	9324.36	9453.44	9324.36	27.51	31.10	198.97	-1272.98	86.10	335.23	290.05	7.42	
9500.00	9424.36	9553.44	9424.36	27.68	31.25	198.97	-1272.98	86.10	335.23	289.66	7.36	
9600.00	9524.36	9653.44	9524.36	27.85	31.40	198.97	-1272.98	86.10	335.23	289.26	7.29	
9700.00	9624.36	9753.44	9624.36	28.02	31.56	198.97	-1272.98	86.10	335.23	288.86	7.23	
9800.00	9724.36	9853.44	9724.36	28.19	31.71	198.97	-1272.98	86.10	335.23	288.46	7.17	
9900.00	9824.36	9953.44	9824.36	28.37	31.86	198.97	-1272.98	86.10	335.23	288.05	7.11	
10000.00	9924.36	10053.44	9924.36	28.54	32.02	198.97	-1272.98	86.10	335.23	287.65	7.05	
10100.00	10024.36	10153.44	10024.36	28.71	32.17	198.97	-1272.98	86.10	335.23	287.25	6.99	
10200.00	10124.36	10253.44	10124.36	28.89	32.33	198.97	-1272.98	86.10	335.23	286.84	6.93	
10300.00	10224.36	10353.44	10224.36	29.07	32.49	198.97	-1272.98	86.10	335.23	286.44	6.87	
10400.00	10324.36	10453.44	10324.36	29.24	32.64	198.97	-1272.98	86.10	335.23	286.03	6.81	
10432.64	10357.00	10466.08	10337.00	29.30	32.66	198.97	-1272.98	86.10	335.83	286.53	6.81	