

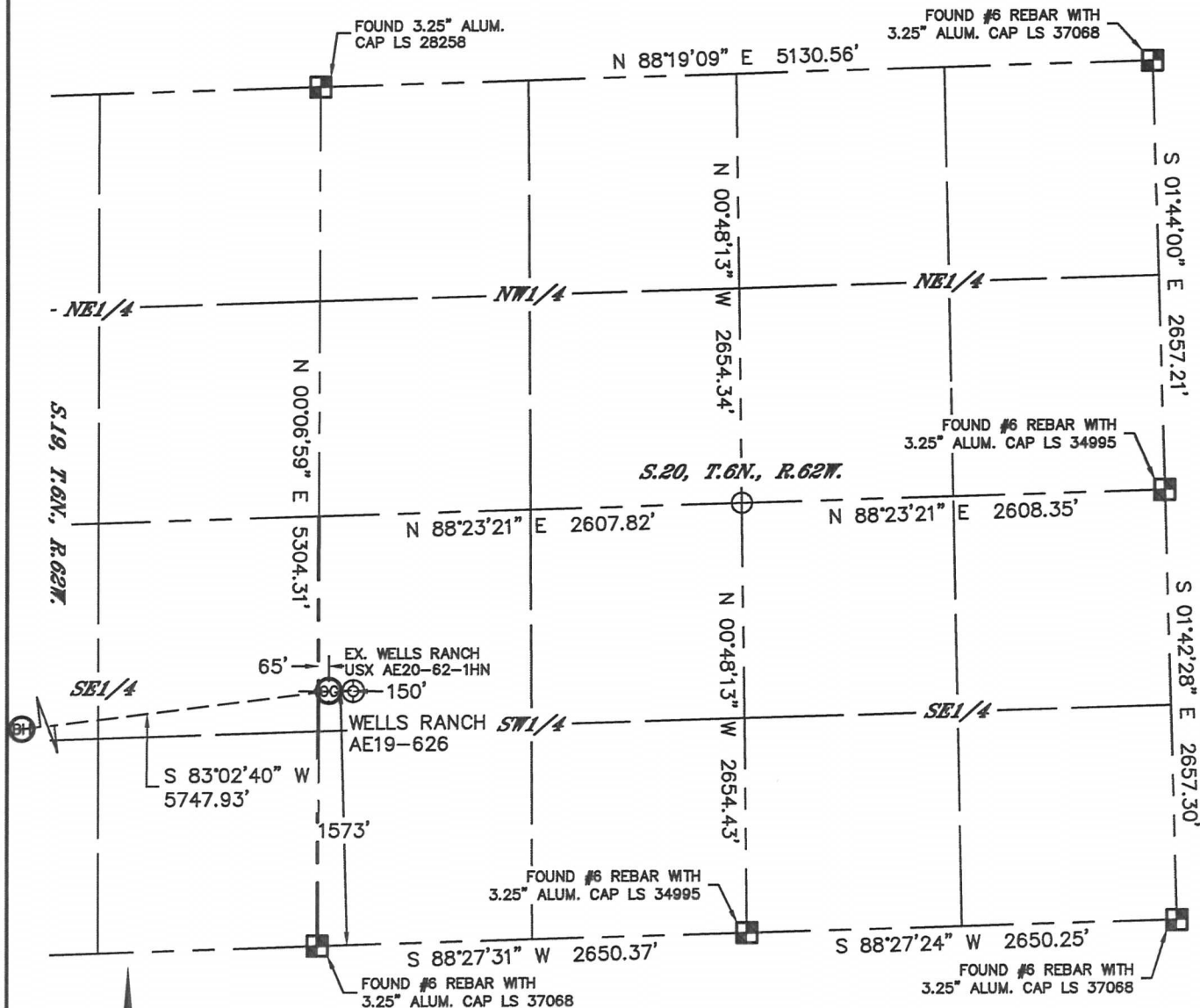


Lat40°, Inc. 1635 Foxtrail Drive, Suite 325 Loveland, CO 970-776-3321

# WELL LOCATION CERTIFICATE

THIS MAP DOES NOT REPRESENT A BOUNDARY SURVEY

SECTION: 20  
TOWNSHIP: 6N  
RANGE: 62W



In accordance with a request from Jacob Rice with Noble Energy Inc. Lat40°, Inc. has determined the surface location of the WELLS RANCH AE19-626 to be 1573' from the SOUTH line and 65' from the WEST line as measured at right angles from the section lines of Section 20, Township 6 North, Range 62 West, and the bottom hole to be 1040' from the SOUTH line and 235' from the EAST line as measured at right angles from the section lines of Section 24, Township 6 North, Range 63 West of the Sixth Principal Meridian, County of Weld, State of Colorado.

I hereby state that this Well Location Certificate was prepared by me, or under my direct supervision, that the fieldwork was completed on 3/13/2014, for and on behalf of Noble Energy Inc. That this is not a Land Survey Plat or an Improvement Survey Plat, and that it is not to be relied upon for establishment of fence, building, or other future improvement lines.

## NOTE:

- 1) Bearings shown are Grid Bearings of the Colorado State Plane Coordinate System, North Zone, North American Datum 1983/2007. The lineal dimensions as contained herein are based upon the "U.S. Survey Foot."
- 2) Ground elevations are based on an observed GPS elevation (NAVD 1988 DATUM).
- 3) IMPROVEMENTS: See LOCATION DRAWING for all visible improvements within 500' of disturbed area.
- 4) SURFACE USE: RANGELAND
- 5) INSTRUMENT OPERATOR: WYATT HALL
- 6) NEAREST EXISTING WELL: EX. WELLS RANCH USX AE20-62-1HN 150' E  
NEAREST CULTURAL ITEMS:  
BUILDING: 5280'+  
BUILDING UNIT: 5280'+  
HIGH OCCUPANCY BUILDING UNIT: 5280'+  
DESIGNATED OUTSIDE ACTIVITY AREA: 5280'+  
PUBLIC ROAD: 3717' N (CR 68)  
ABOVEGROUND UTILITY: 4161' NE  
RAILROAD: 5280'+  
PROPERTY LINE: 65' W

## SURFACE LOCATION

LAT: 40.46928°N  
LONG: 104.35587°W  
PDOP: 2.2  
ELEV: 4786'  
1/4,1/4: NW1/4SW1/4

## BOTTOM HOLE

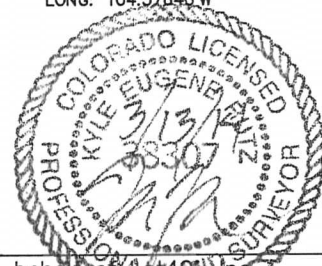
LAT: 40.46757°N  
LONG: 104.37640°W

## LEGEND

- = ALIQUOT MONUMENT AS DESCRIBED
- = CALCULATED POSITION

## SHEET 1 OF 3

Kyle E. Rutz—On behalf of Lat40°, Inc.  
Colorado Licensed Professional Land Surveyor No. 38307  
DATE: 3/13/2014  
PROJECT#: 2014014



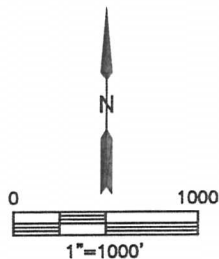
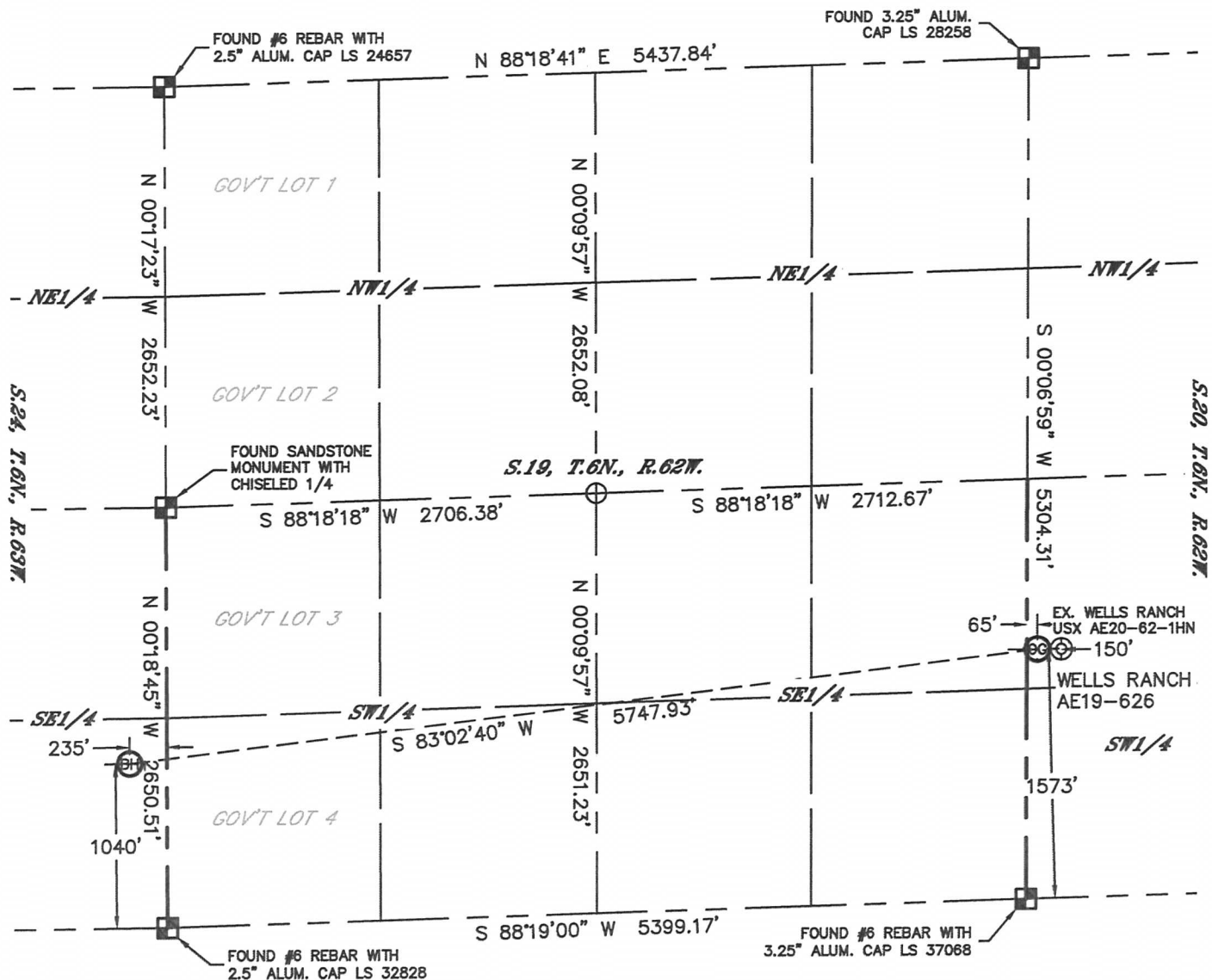


Lat40°, Inc. 1635 Foxtrail Drive, Suite 325 Loveland, CO 970-776-3321

# WELL LOCATION CERTIFICATE

THIS MAP DOES NOT REPRESENT A BOUNDARY SURVEY

SECTION: 20  
TOWNSHIP: 6N  
RANGE: 62W

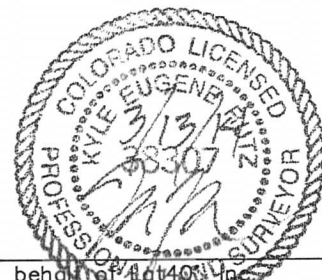


## LEGEND

- = ALIQUOT MONUMENT AS DESCRIBED
- = CALCULATED POSITION

## SHEET 2 OF 3

Kyle E. Rutz—On behalf of Lat40°, Inc.  
Colorado Licensed Professional Land Surveyor No. 38307  
DATE: 3/13/2014  
PROJECT#: 2014014



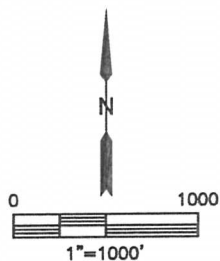
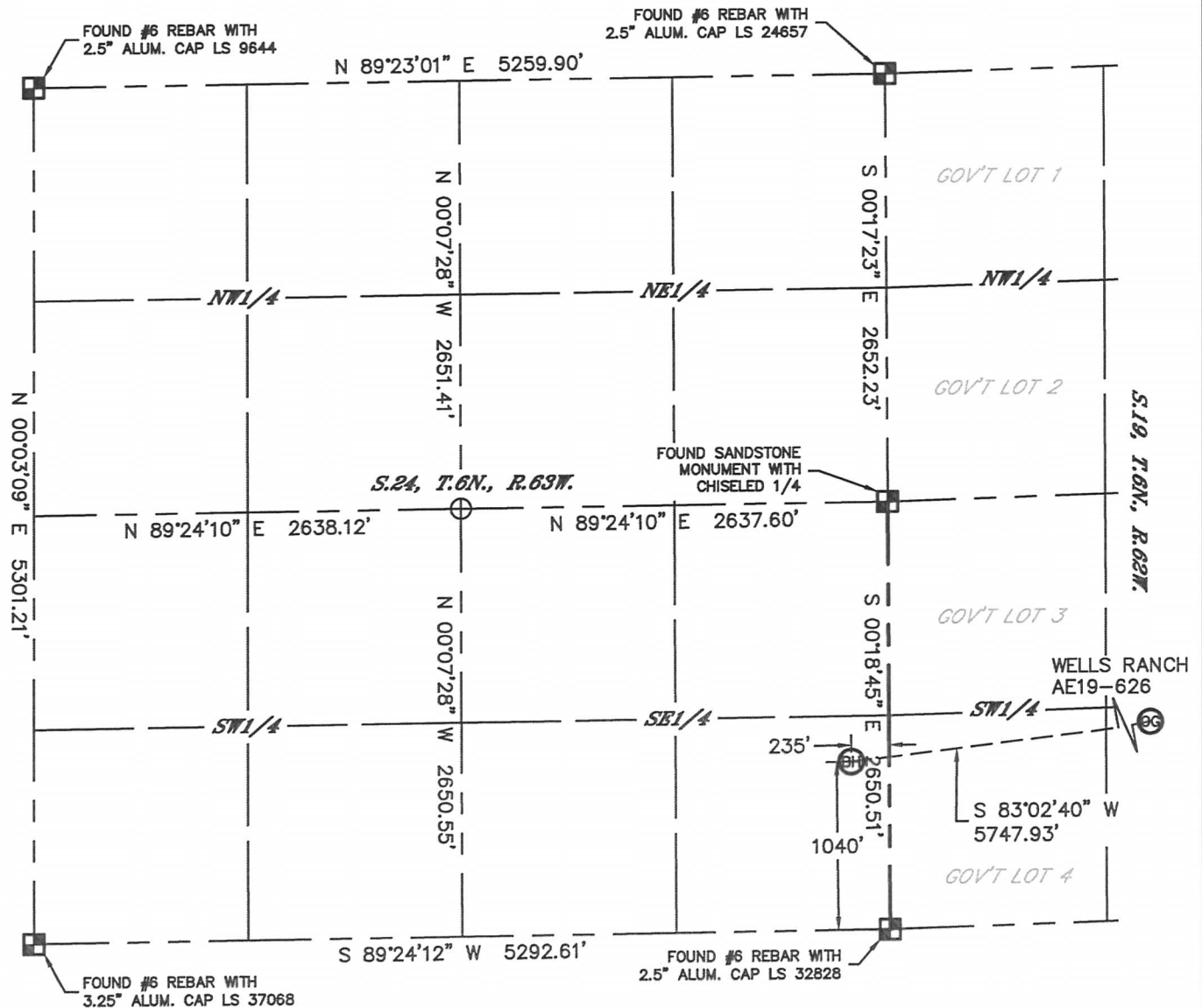


Lat40°, Inc. 1635 Foxtrail Drive, Suite 325 Loveland, CO 970-776-3321

# WELL LOCATION CERTIFICATE

THIS MAP DOES NOT REPRESENT A BOUNDARY SURVEY

SECTION: 20  
TOWNSHIP: 6N  
RANGE: 62W

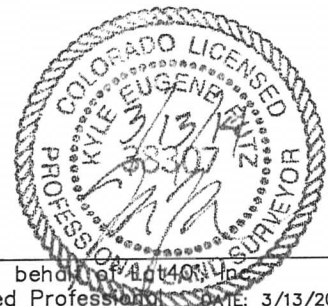


## LEGEND

- = ALIQUOT MONUMENT AS DESCRIBED
- = CALCULATED POSITION

## SHEET 3 OF 3

Kyle E. Rutz—On behalf of Lat40°, Inc.  
Colorado Licensed Professional Land Surveyor No. 38307  
DATE: 3/13/2014  
PROJECT#: 2014014



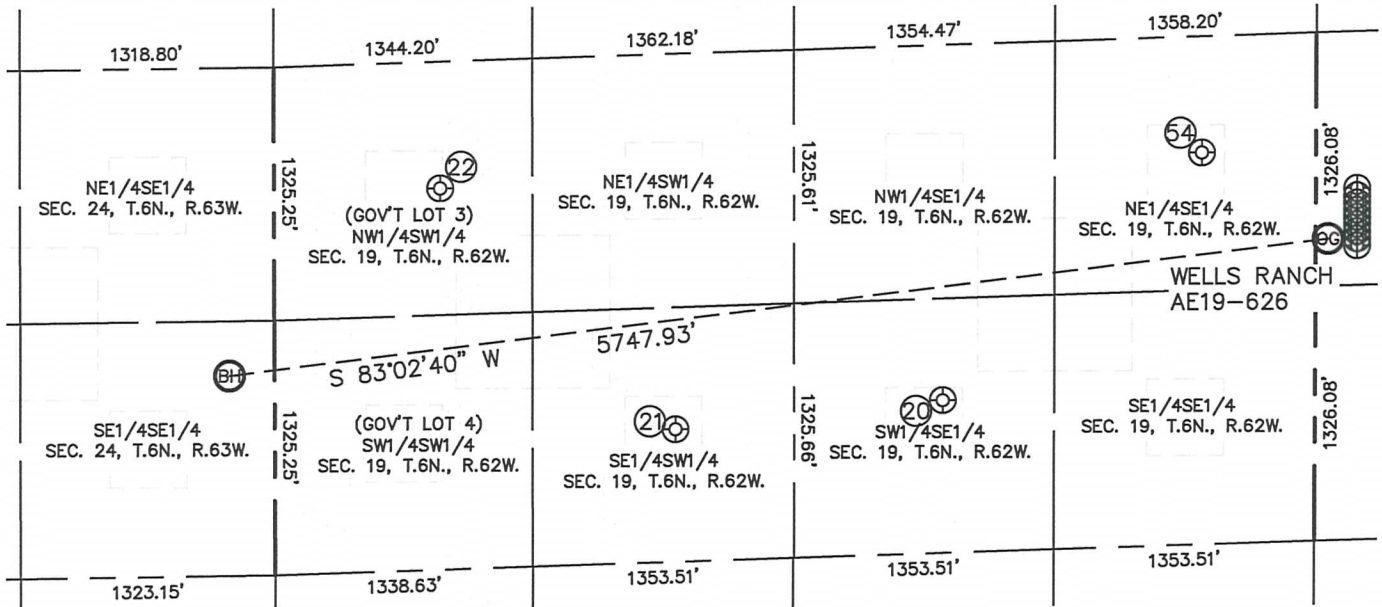


Lat40°, Inc. 1635 Foxtrail Drive, Suite 325 Loveland, CO 970-776-3321

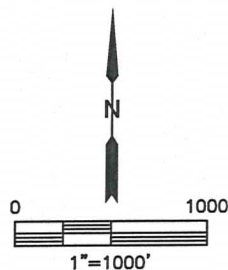
# SITE SKETCH

## WELLS RANCH AE19-626

SECTION: 20  
TOWNSHIP: 6N  
RANGE: 62W



WELL NO.	WELL NAME	SHL FOOTAGE				SHL LAT°	SHL LONG°	PDOP	ELEV (FT.)	1/4/1/4
20	WELLS RANCH USX AE 19-15	795	FSL	1931	FEL	40.46705	-104.36308	1.9	4784	SWSE
21	WELLS RANCH USX AE 19-14	690	FSL	2083	FWL	40.46670	-104.36808	1.9	4762	SESW
22	WELLS RANCH USX AE 19-12	1987	FSL	863	FWL	40.47020	-104.37243	2.4	4794	NWSW
54	WELLS RANCH USX AE 19-09P	2043	FSL	592	FEL	40.47054	-104.35820	1.9	4785	NESE



DATE: 3/19/2014  
PROJECT#: 2014014