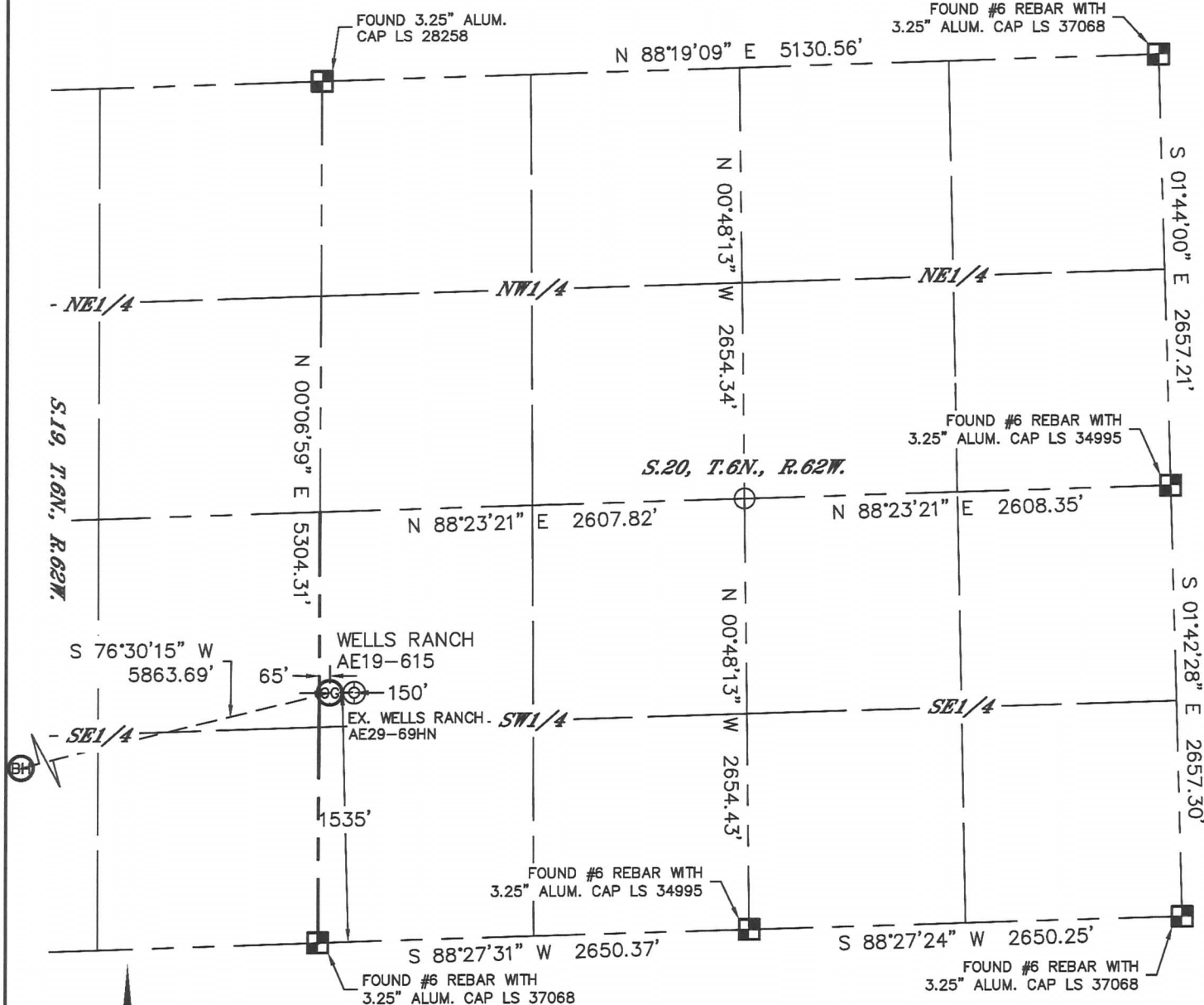




WELL LOCATION CERTIFICATE

THIS MAP DOES NOT REPRESENT A BOUNDARY SURVEY

SECTION: 20
TOWNSHIP: 6N
RANGE: 62W

In accordance with a request from Jacob Rice with Noble Energy Inc. Lat40°, Inc. has determined the surface location of the WELLS RANCH AE19-615 to be 1535' from the SOUTH line and 65' from the WEST line as measured at right angles from the section lines of Section 20, Township 6 North, Range 62 West, and the bottom hole to be 330' from the SOUTH line and 235' from the EAST line as measured at right angles from the section lines of Section 24, Township 6 North, Range 63 West of the Sixth Principal Meridian, County of Weld, State of Colorado.

I hereby state that this Well Location Certificate was prepared by me, or under my direct supervision, that the fieldwork was completed on 2/14/2014, for and on behalf of Noble Energy Inc. That this is not a Land Survey Plat or an Improvement Survey Plat, and that it is not to be relied upon for establishment of fence, building, or other future improvement lines.

NOTE:

- 1) Bearings shown are Grid Bearings of the Colorado State Plane Coordinate System, North Zone, North American Datum 1983/2007. The lined dimensions as contained herein are based upon the "U.S. Survey Foot."
 - 2) Ground elevations are based on an observed GPS elevation (NAVD 1988 DATUM).
 - 3) IMPROVEMENTS: See LOCATION DRAWING for all visible improvements within 500' of disturbed area.
 - 4) SURFACE USE: RANGELAND
 - 5) INSTRUMENT OPERATOR: MARK ANGELL
 - 6) NEAREST EXISTING WELL: EX. WELLS RANCH AE29-69HN 150' E
- NEAREST CULTURAL ITEMS:
BUILDING: 5280'+
BUILDING UNIT: 5280'+
HIGH OCCUPANCY BUILDING UNIT: 5280'+
DESIGNATED OUTSIDE ACTIVITY AREA: 5280'+
PUBLIC ROAD: 3755' N (CR 68)
ABOVEGROUND UTILITY: 4195' NE
RAILROAD: 5280'+
PROPERTY LINE: 65' W

SURFACE LOCATION

LAT: 40.46917N
LONG: 104.35587W
PDOP: 1.6
ELEV: 4786'
1/4, 1/4: NW1/4SW1/4

BOTTOM HOLE

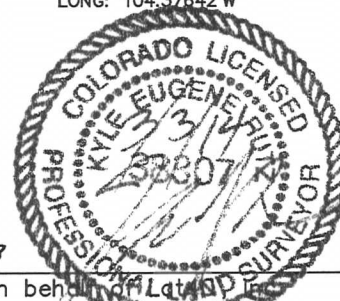
LAT: 40.46562N
LONG: 104.37642W

LEGEND

- = ALIQUOT MONUMENT AS DESCRIBED
○ = CALCULATED POSITION

SHEET 1 OF 3

Kyle E. Rutz-On behalf of Lat40° Inc.
Colorado Licensed Professional Land Surveyor No. 38307
DATE: 2/17/2014
PROJECT#: 2014014

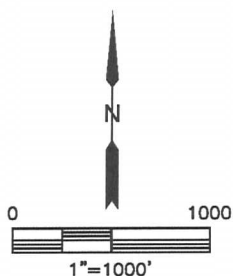
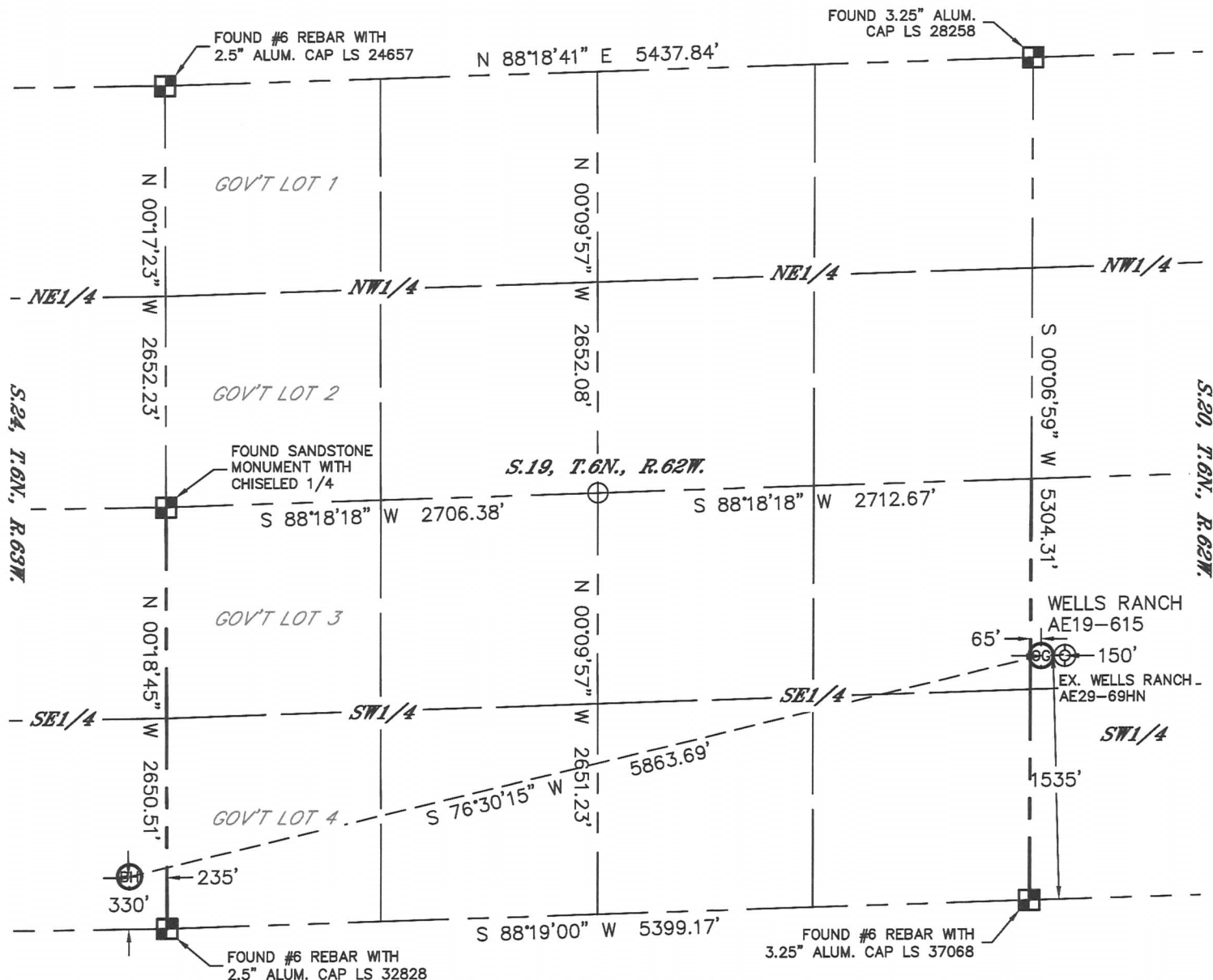




WELL LOCATION CERTIFICATE

THIS MAP DOES NOT REPRESENT A BOUNDARY SURVEY

SECTION: 20
TOWNSHIP: 6N
RANGE: 62W



LEGEND

- = ALIQUOT MONUMENT AS DESCRIBED
- = CALCULATED POSITION

SHEET 2 OF 3

Kyle E. Rutz—On behalf of
Colorado Licensed Professional Land Surveyor No. 38307
DATE: 2/17/2014
PROJECT#: 2014014

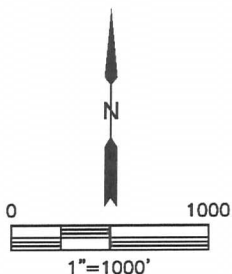
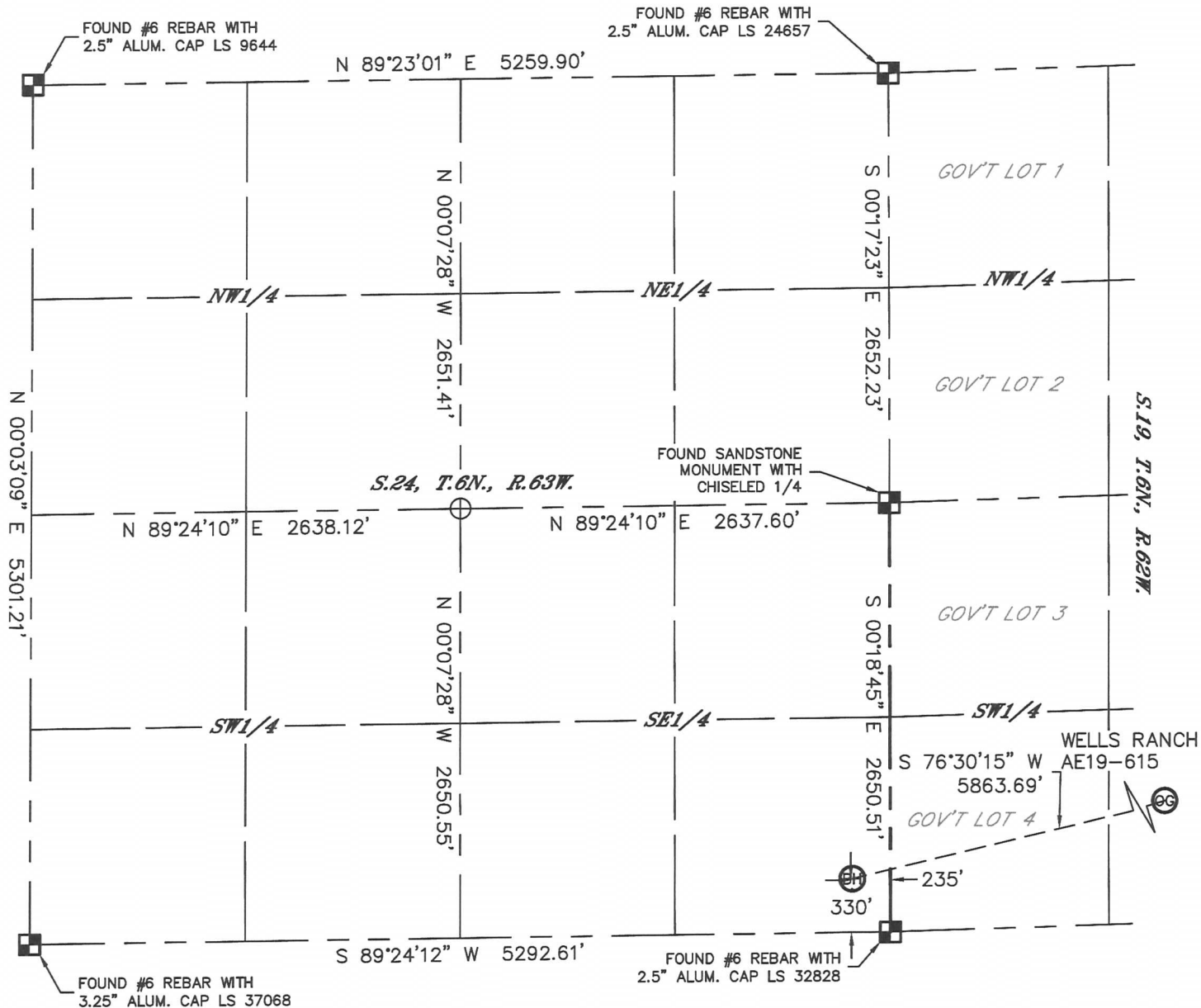




WELL LOCATION CERTIFICATE

THIS MAP DOES NOT REPRESENT A BOUNDARY SURVEY

SECTION: 20
TOWNSHIP: 6N
RANGE: 62W

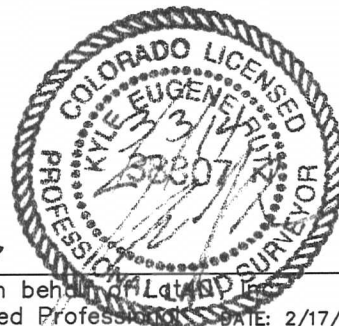


LEGEND

- = ALIQUOT MONUMENT AS DESCRIBED
- = CALCULATED POSITION

SHEET 3 OF 3

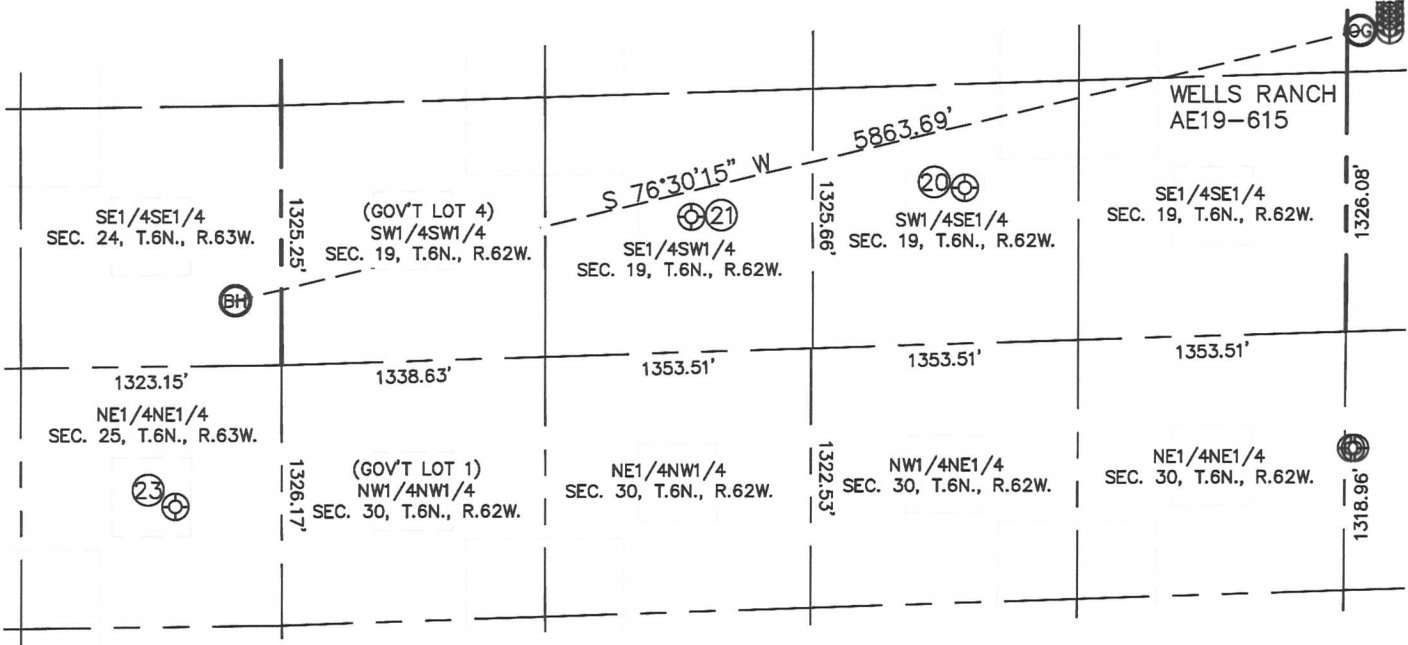
Kyle E. Rutz—On behalf of Lat40°
Colorado Licensed Professional Land Surveyor No. 38307
DATE: 2/17/2014
PROJECT#: 2014014





SITE SKETCH
WELLS RANCH AE19-615

SECTION: 20
TOWNSHIP: 6N
RANGE: 62W



WELL NO.	WELL NAME	SHL FOOTAGE				SHL LAT°	SHL LONG°	PDOP	ELEV (FT.)	1/4/1/4
20	WELLS RANCH USX AE 19-15	795	FSL	1931	FEL	40.46705	-104.36308	1.9	4784	SWSE
21	WELLS RANCH USX AE 19-14	690	FSL	2083	FWL	40.46670	-104.36808	1.9	4762	SESW
23	WELLS RANCH USX AA 25-01	714	FNL	540	FEL	40.46276	-104.37754	1.6	4752	NENE

