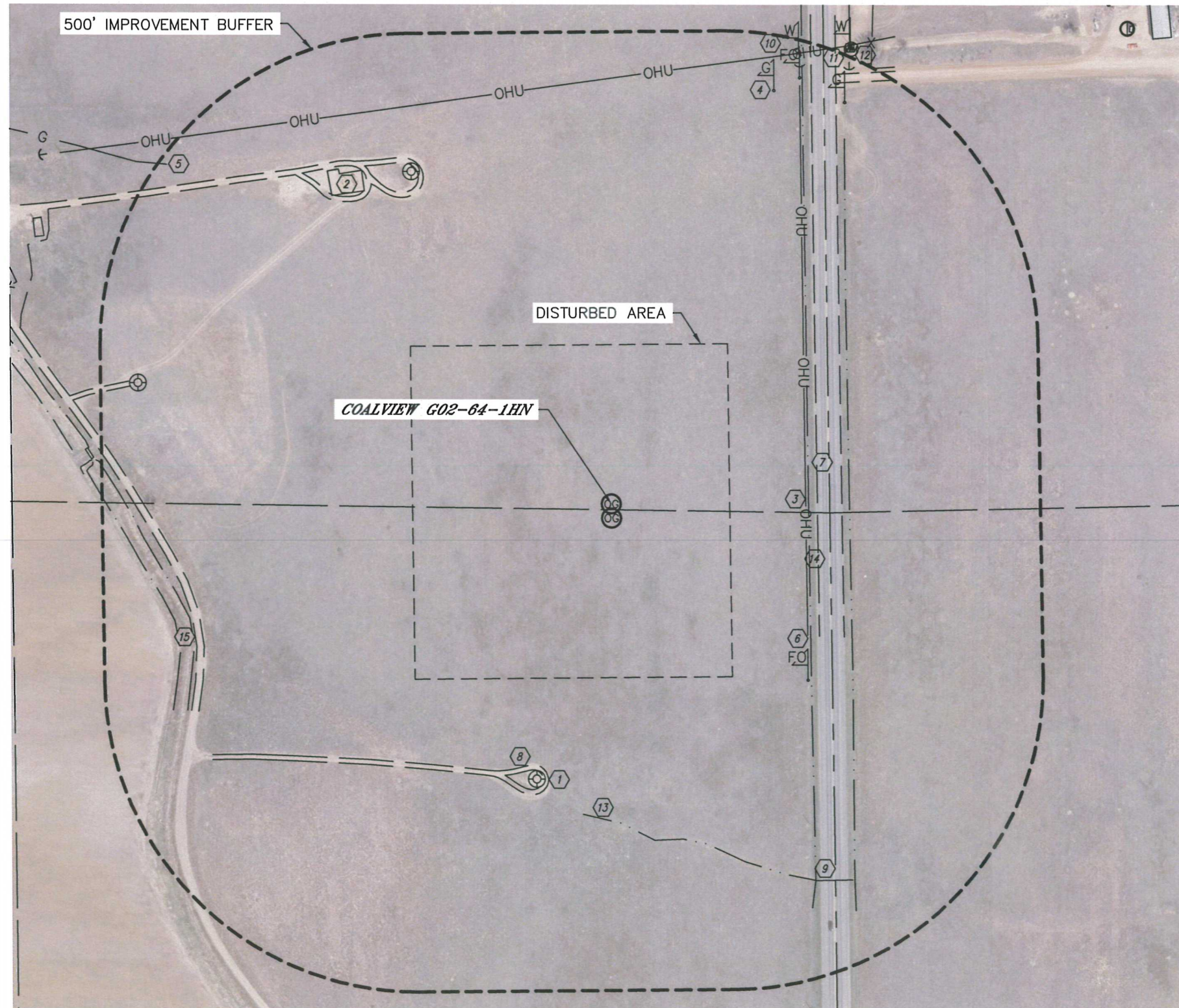


LOCATION DRAWING

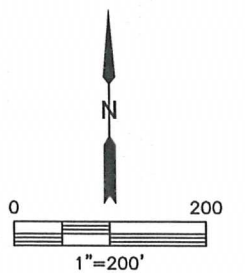
COALVIEW G02-64-1HN PAD

SECTION: 1
TOWNSHIP: 4N
RANGE: 65W

IMPROVEMENTS:
(MEASURED FROM THE PROPOSED COALVIEW G02-64-1HN WELL LOCATION)



- (BU) NO BUILDING UNITS WITHIN 500' IMPROVEMENT BUFFER
- (B1) NO BUILDINGS WITHIN 500' IMPROVEMENT BUFFER
- (1) EX. WELLHEAD 456' SW, 620' & 785' NW
- (2) EX. PRODUCTION EQUIPMENT 638' NW (NOBLE)
- (3) OVERHEAD UTILITY 313' E, 674' NW
- (4) GAS MARKER 712' & 745' NE
- (5) GAS LINE 897' NW
- (6) FIBER-OPTIC MARKER 422' SE, 747' NE
- (7) COUNTY ROAD 49 332' E
- (8) ACCESS ROAD 435' & 687' SW, 587' NW, 766' NE
- (9) CULVERT 685' SE
- (10) WATER MARKER 783' & 825' NE
- (11) WATER METER 825' NE
- (12) TELEPHONE PEDESTAL 826' NE
- (13) SWALE 498' S
- (14) BARROW DITCH 318' & 383' E
- (15) DITCH 704' & 728' SW



NEAREST: BUILDING 1129' NE, BUILDING UNIT 1130' NE, HIGH OCCUPANCY BUILDING UNIT 5280'+,
DESIGNATED OUTSIDE ACTIVITY AREA 5280'+, PUBLIC ROAD 332' E,
ABOVE GROUND UTILITY 313' E, RAILROAD 5280'+, PROPERTY LINE 351' E