

Project: Wattenberg Field  
Site: G (Sec.1-T04N-R65W) Weld County, CO  
Well: CoalView G02-66-1HN  
Wellbore: Original Drilling  
Design: APD - Rev 0

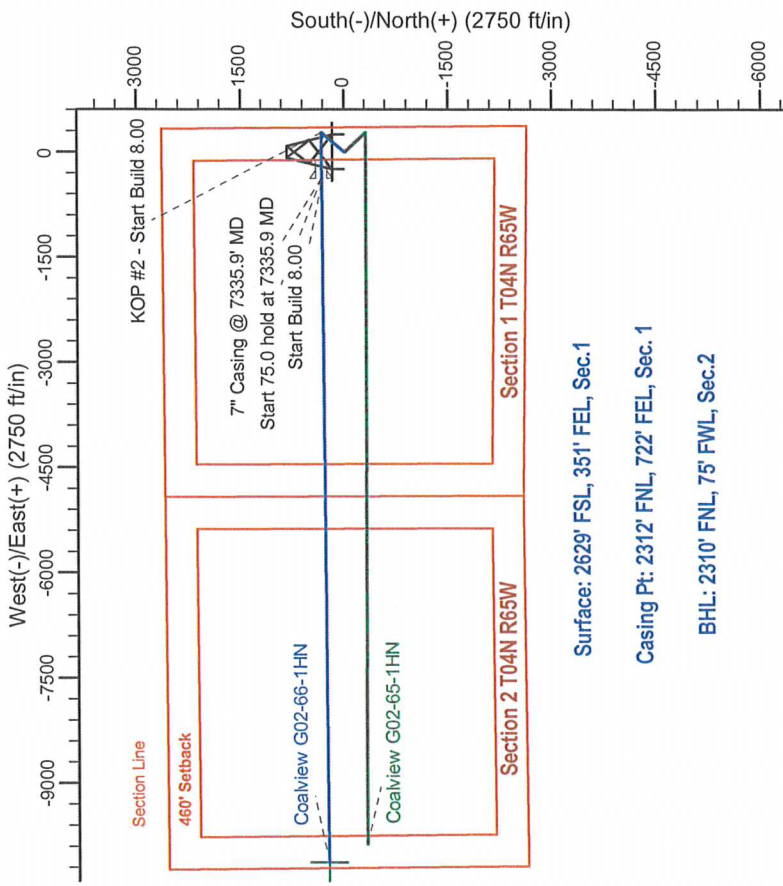
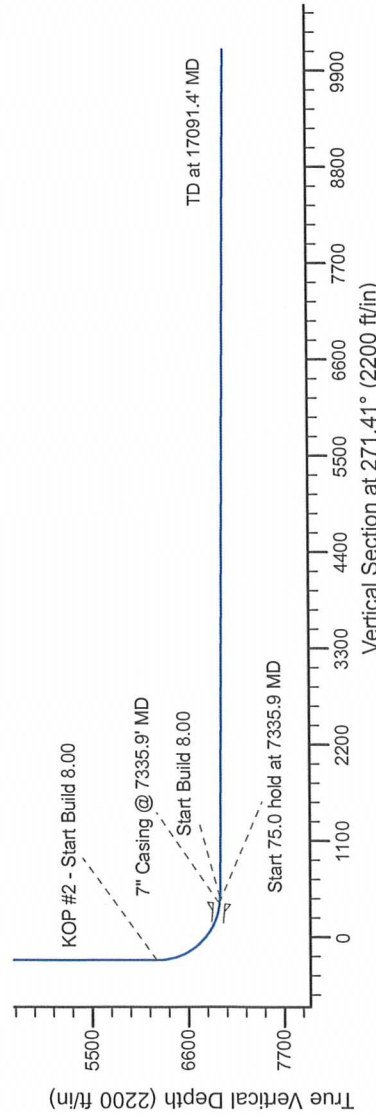
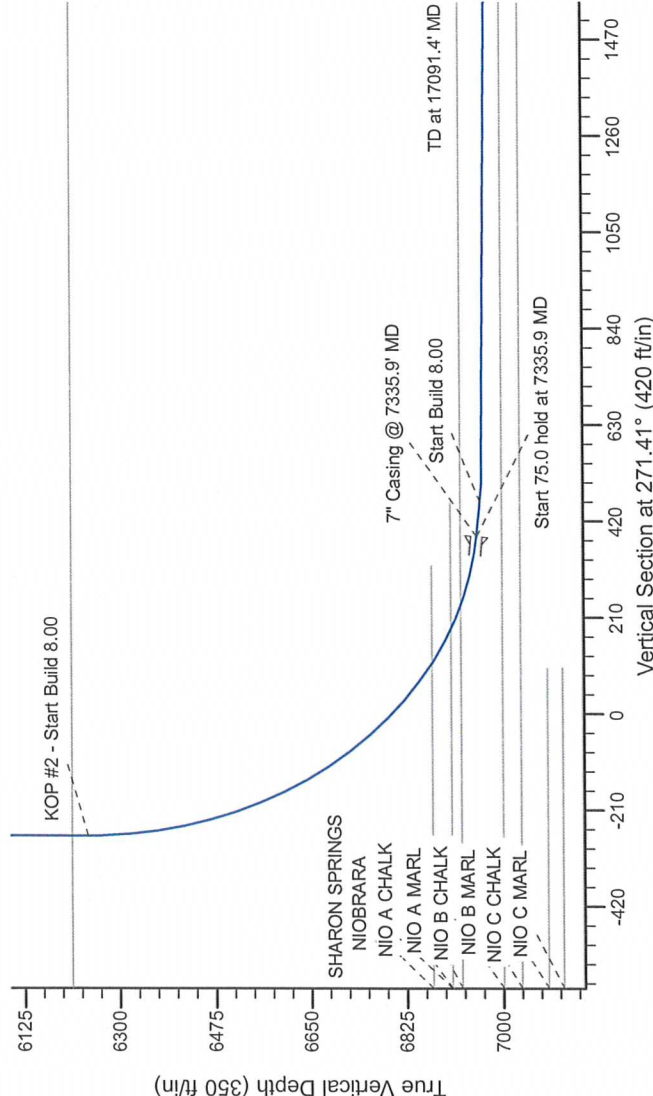
# Northern Region Drilling - Working

Geodetic System: US State Plane 1983  
Datum: North American Datum 1983  
Ellipsoid: GRS 1980  
Zone: Colorado Northern Zone  
System Datum: Mean Sea Level

## SECTION DETAILS

Sec	MD	Inc	Azi	TVD	+N/-S	+E/-W	Dleg	TFace	VSect	Target
1	0.0	0.00	0.00	0.0	0.0	0.0	0.00	0.00	0.0	
2	1500.0	0.00	0.00	1500.0	0.0	0.0	0.00	0.00	0.0	
3	1949.8	9.00	40.24	1947.9	26.9	22.8	2.00	40.24	-22.1	
4	4221.9	9.00	40.24	4192.1	298.1	252.2	0.00	0.00	-244.8	
5	4671.6	0.00	0.00	4640.0	325.0	275.0	2.00	180.00	-266.9	
6	6273.4	0.00	0.00	6241.8	325.0	275.0	0.00	0.00	-266.9	
7	7335.9	85.00	269.58	6955.3	320.2	-378.8	8.00	269.58	386.5	
8	7410.9	85.00	269.58	6961.8	319.7	-453.5	0.00	0.00	461.2	
9	7467.2	89.50	269.58	6964.5	319.3	-509.6	8.00	0.00	517.3	
10	17091.4	89.50	269.58	7048.5	249.4	-10133.2	0.00	0.00	10136.3	

CoalView G02-66-1HN BHL 2310FSL, 75FWL



Surface: 2629' FSL, 351' FEL, Sec.1  
Casing Pt: 2312' FNL, 722' FEL, Sec. 1  
BHL: 2310' FNL, 75' FWL, Sec.2

T  
G  
M

Azimuths to Grid North  
True North: -0.58°  
Magnetic North: 7.77°

Magnetic Field  
Strength: 52854.0snT  
Dip Angle: 66.94°  
Date: 3/20/2014  
Model: IGRF200510

WELL DETAILS: CoalView G02-66-1HN			
0.0	Northing	Ground Level: 4828.0	Longitude
0.0	0.0	Eastings	Latitude
1368392.74	3249952.70	40.341170	-104.603300
Plan: APD - Rev 0 (CoalView G02-66-1HN/Original Drilling)			
Created By: Shalley Jewell		Date: 15:10, March 20 2014	
Checked:		Date:	
Reviewed:		Date:	
Approved:		Date:	