

COLUMBINE LOGGING

Scale: 5" / 100'
Measured Depth Log

Well Name COUGAR B02-68-1HN VERT

Location SEC 2 T5N R64W

State COLORADO

County WELD

Country USA

Rig Number H&P 315

API Number 05-123-36407

AFE # 136840

Region DJ BASIN

Field WATTENBERG

Spud Date 1/16/2014

Drilling Completed 1/18/2014

Surface Coordinates NWNW SEC2 T5N R64W
566' FNL; 725' FWL

LAT/LON 40.43407000/-104.52420000

Bottom Hole Coordinates NENE SEC2 T5N R64W
990' FNL; 660' FEL

Ground Elevation 4,640'

K.B. Elevation 4,664

Logged Interval 2,000' **To** 5,981'

Total Depth 5,981'

Formation NIOBRARA B CHALK

Type of Drilling Fluid LSND

Operator

Company Noble Energy Inc

Address 1625 BROADWAY SUITE 2200
DENVER, CO 80202

Geologist

Name MARK COLE, NATHAN MURPHY

Company COLUMBINE LOGGING, INC

Address 2385 S LIPAN ST
DENVER, CO 80223

Rock Types

	SHALY SILTSTONE		CHALK		IGNEOUS		SHALE COLORED
	SHALY SANDSTONE		CHERT		LIMESTONE		SHALE GRAY
	SANDSTONE		CLAY CHOKE SAND		SIDERITE or LIMONITE		SILTSTONE
	SILTY SHALE		CLAYSTONE		MARLSTONE		TILL
	UNKNOWN		COAL		METAMORPHIC		TUFF
	ANHYDRITE		CONGLOMERATE		NO SAMPLE		WELDED TUFF
	BENTONITE		DOLOMITE		SALT		
	BRECCIA		GRANITE		SALT- PEPPER SAND		
	CEMENT		GYPSUM		SHALE		

Accessories

Fossils

ALGAE
 AMPHIPORA
 BELEMNITE
 BIOCLASTIC
 BRACHIOIPOD
 BRYOZOA
 CEPHALOPOD
 CORAL
 CRINOID
 ECHINOID
 FISH
 FORAMINIFERA

Fossil

GASTROPOD
 INOCERAMUS
 OOLITE
 OSTRACOD
 PELECYPOD
 PELLET
 PISOLITE
 PLANT REMAINS
 PLANT SPORES
 SCAPHOPOD
 STROMATOPOROID

Minerals

ANHYDRITIC
 ARGILLACEOUS
 ARGILLITE GRAIN
 BENTONITE
 BITUMENOUS SUBSTANCE
 BRECCIA FRAGMENTS
 CALCAREOUS
 CARBONACEOUS FLAKES
 CHTDK
 CHTLT
 COAL - THIN BEDS
 DOLOMITIC
 FELDSPAR
 FERRUGINOUS PELLET

FERRUGINOUS
 GLAUCONITE
 GYPSIFEROUS
 HEAVY MINERAL
 KAOLIN
 MARLSTONE
 MINERAL CRYSTALS
 NODULES
 PHOSPHATE PELLETS
 PYRITE
 SALT CAST
 SANDY
 SILICEOUS
 SILTY

Tuffaceous

Stringer

ANHYDRITE STRINGER
 BENTONITE STRINGER
 COAL STRINGER
 DOLOMITE STRINGER
 GYPSUM STRINGER
 LIMESTONE STRINGER
 MARLSTONE (CALC) STRG
 MARLSTONE (DOL) STRG
 SANDSTONE STRINGER
 SHALE STRINGER
 SILTSTONE STRINGER

Other Symbols

Oil Show

DEAD
 EVEN
 QUESTIONABLE
 SPOTTED STAINING

Porosity

EARTHY
 FENESTRAL
 FRACTURE
 INTERCRYSTALLINE
 INTEROOLITIC

MOLDIC
 ORGANIC
 PINPOINT
 VUGGY

Engineering

BIT
 CONNECTION (LEFT)
 CONNECTION (RIGHT)
 CONNECTION GAS
 CORE - LOST
 CORE - RECOVERED
 DST INTERVAL

FAULT
 FORMATION TOP
 GAS SHOW
 MN DEPTH
 NORMAL FAULT
 OIL SHOW
 OVERTURNED STRATA
 REVERSE FAULT
 SIDEWALL CORE (LEFT)
 SIDEWALL CORE (RIGHT)
 SLIDE
 SURVEY
 TRIP GAS

WIRELINE TESTED - LEFT
 WIRELINE TESTED - RT

Rounding

ANGULAR
 ROUNDED
 SUBANG
 SUBRND

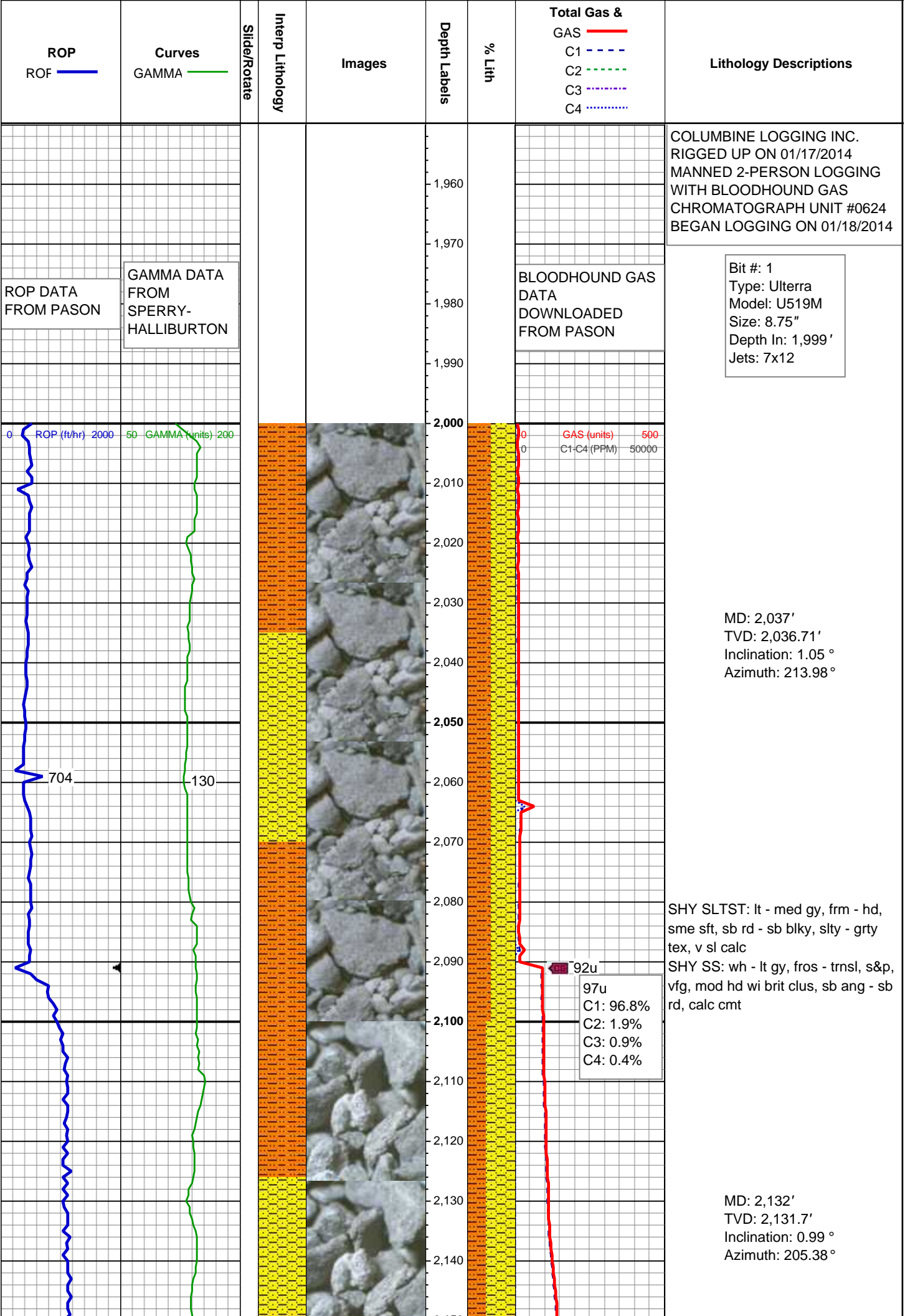
Textures

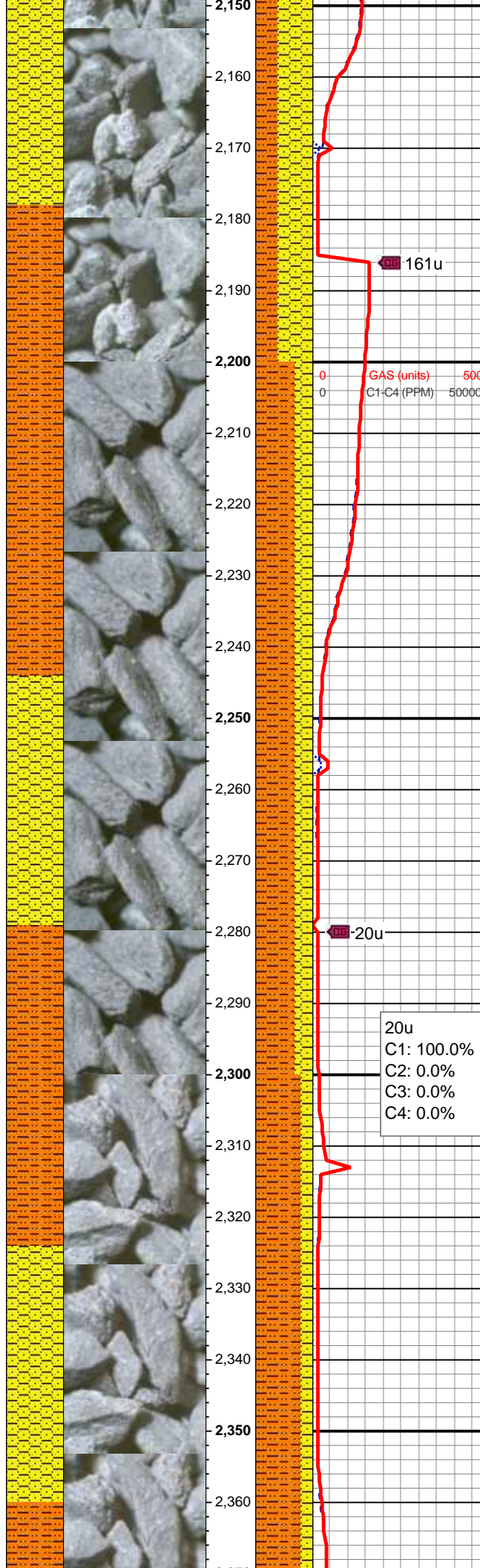
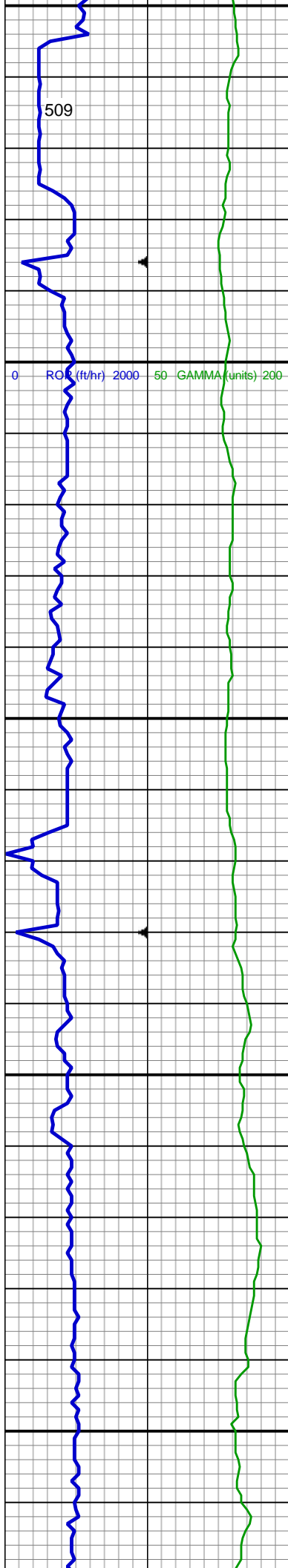
BOUNDSTONE
 CHALKY
 CRYPTOXLN

EARTHY
 FINELYXLN
 GRAINSTONE
 LITHOGRAPHIC
 MICROXLN
 MUDSTONE
 PACKSTONE
 WACKESTONE

Sorting

MODERATE
 POOR
 WELL





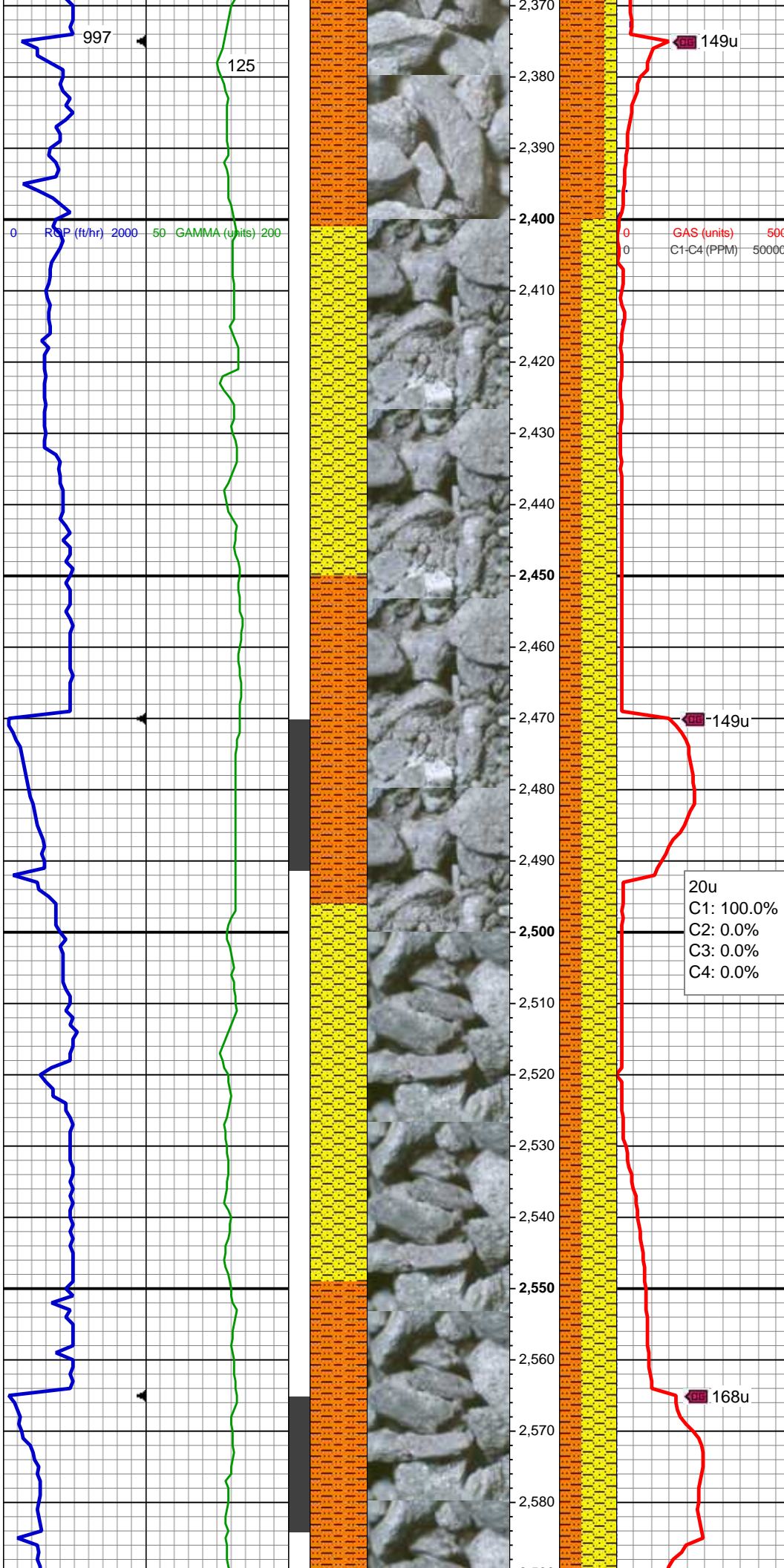
SHY SS: wh - lt gy, fros - trns, s&p,
vfg, mod hd wi brit clus, sb ang - sb
rd, calc cmt
SHY SLTST: lt - med gy, frm - hd,
sme sft, sb rd - sb blk, slty - grty
tex, v sl calc

MUD WT: 8.60/8.60
VIS: 30/30 IN/OUT

MD: 2,227'
TVD: 2,226.69'
Inclination: 0.8 °
Azimuth: 200.27 °

SHY SLTST: lt - med gy, frm - hd,
sme sft, sb rd - sb blk, slty - grty
tex, v sl calc
SHY SS: wh - lt gy, fros - trns, s&p,
vfg, mod hd wi brit clus, sb ang - sb
rd, calc cmt

MD: 2,322'
TVD: 2,321.68'
Inclination: 0.32 °
Azimuth: 225.22 °



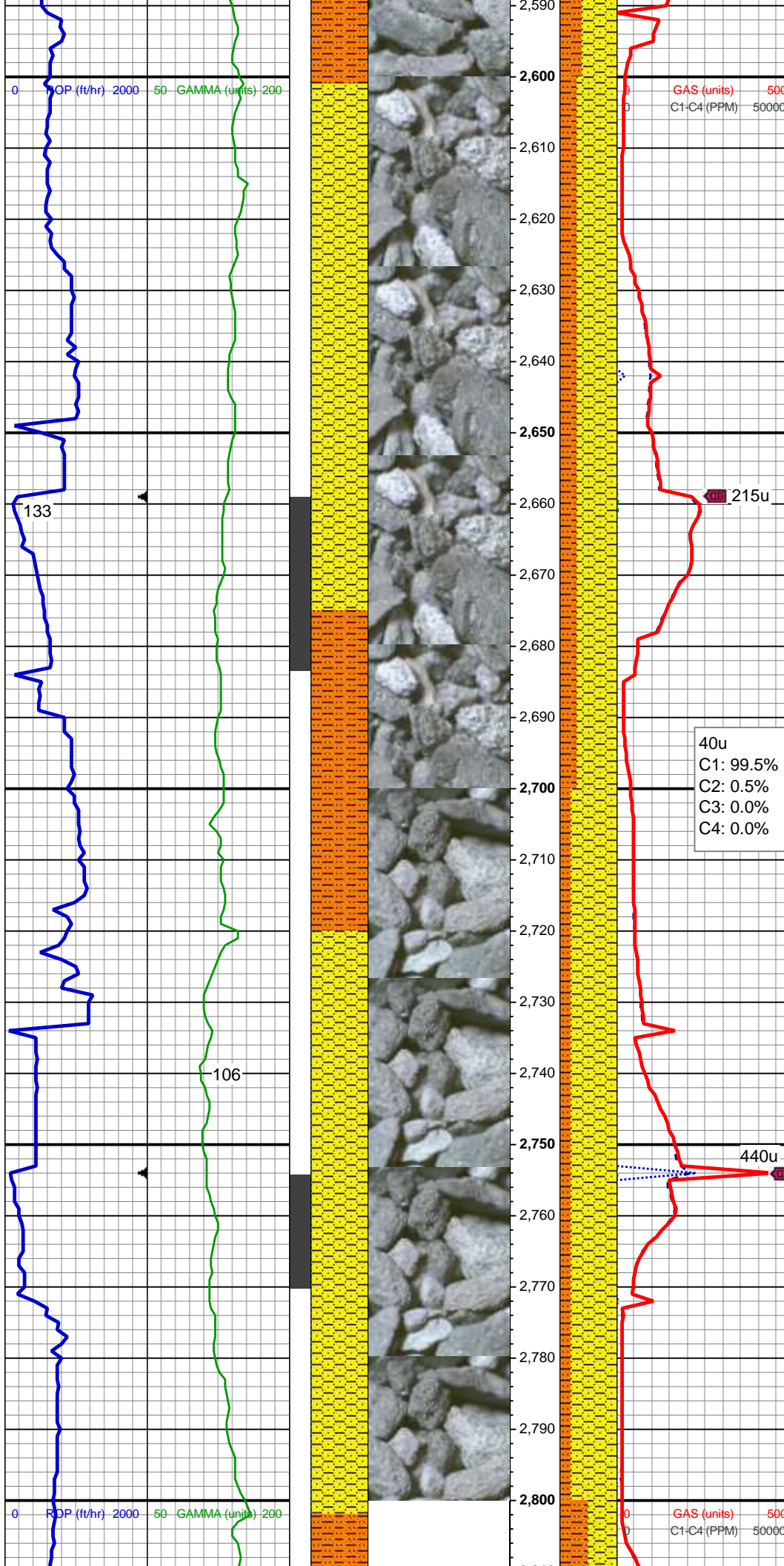
SHY SLTST: lt - med gy, frm - hd,
sme sft, sb rd - sb blk, slty - grty
tex, v sl calc
SHY SS: wh - lt gy, fros - trns, s&p,
vfg, mod hd wi brit clus, sb ang - sb
rd, calc cmt

MD: 2,417'
TVD: 2,416.68'
Inclination: 0.68 °
Azimuth: 222.37 °

SHY SS: wh - lt gy, fros - trns, s&p,
vfg, mod hd wi brit clus, sb ang - sb
rd, calc cmt
SHY SLTST: lt - med gy, frm - hd,
sme sft, sb rd - sb blk, slty - grty
tex, v sl calc

MD: 2,512'
TVD: 2,511.63'
Inclination: 2.9 °
Azimuth: 185.56 °

SHY SS: wh - lt gy, fros - trns, s&p,
vfg, mod hd wi brit clus, sb ang - sb
rd, calc cmt



SHY SLTST: lt - med gy, frm - hd,
sme sft, sb rd - sb blkly, slty - grty
tex, v sl calc

MD: 2,607'
TVD: 2,606.45'
Inclination: 4.24 °
Azimuth: 160.46°

SHY SS: wh - lt gy, fros - trnsl, s&p,
vfg, mod hd wi brit clus, sb ang - sb
rd, calc cmt

SHY SLTST: lt - med gy, frm - hd,
sme sft, sb rd - sb blkly, slty - grty
tex, v sl calc

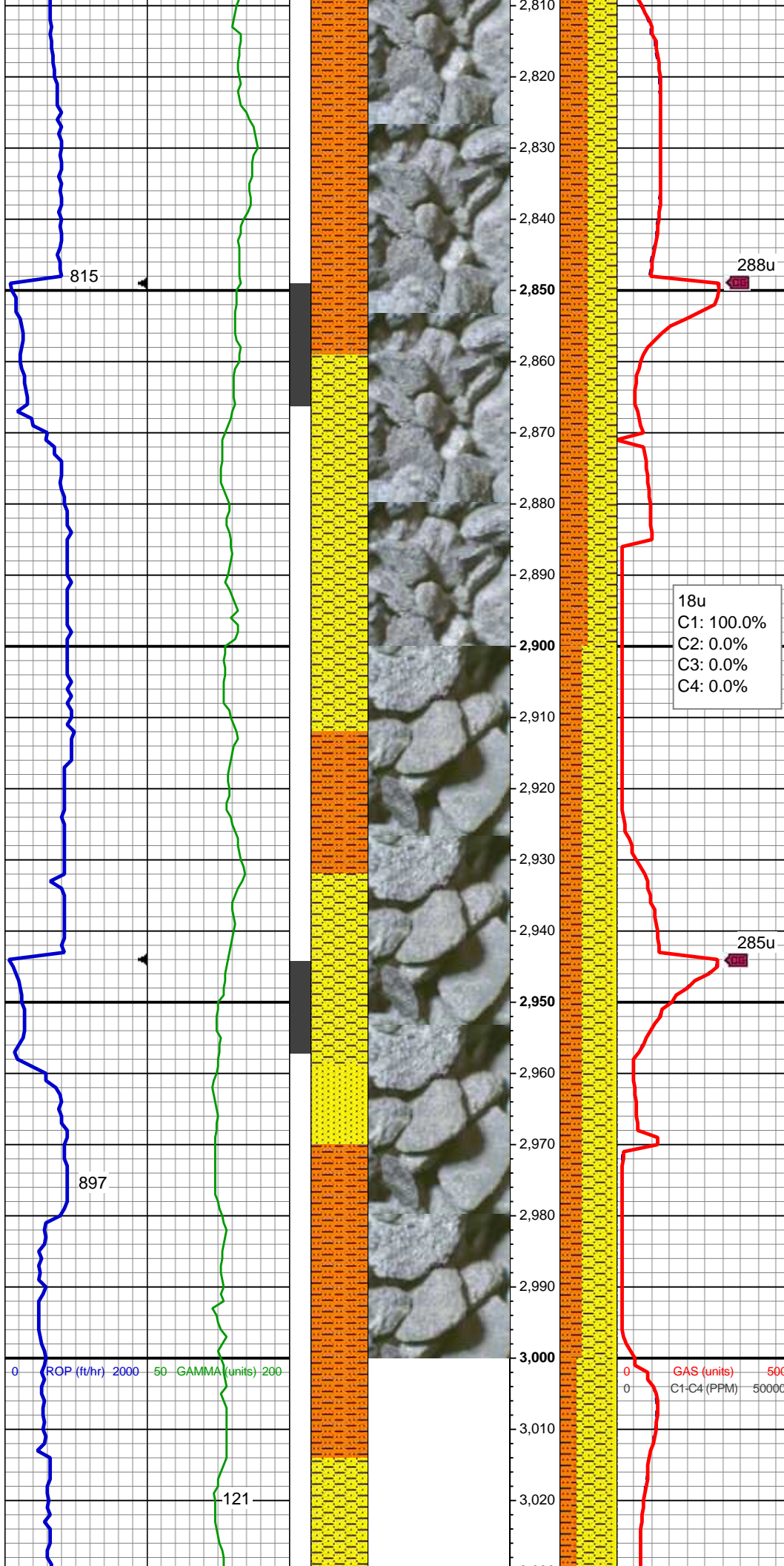
MD: 2,702'
TVD: 2,701.04'
Inclination: 6.38 °
Azimuth: 177.07°

SHY SS: wh - lt gy, fros - trnsl, s&p,
vfg, mod hd wi brit clus, sb ang - sb
rd, calc cmt

SHY SLTST: lt - med gy, frm - hd,
sme sft, sb rd - sb blkly, slty - grty
tex, v sl calc

MD: 2,796'
TVD: 2,794.34'
Inclination: 7.57 °

Inclination: 7.97°
Azimuth: 173.85°



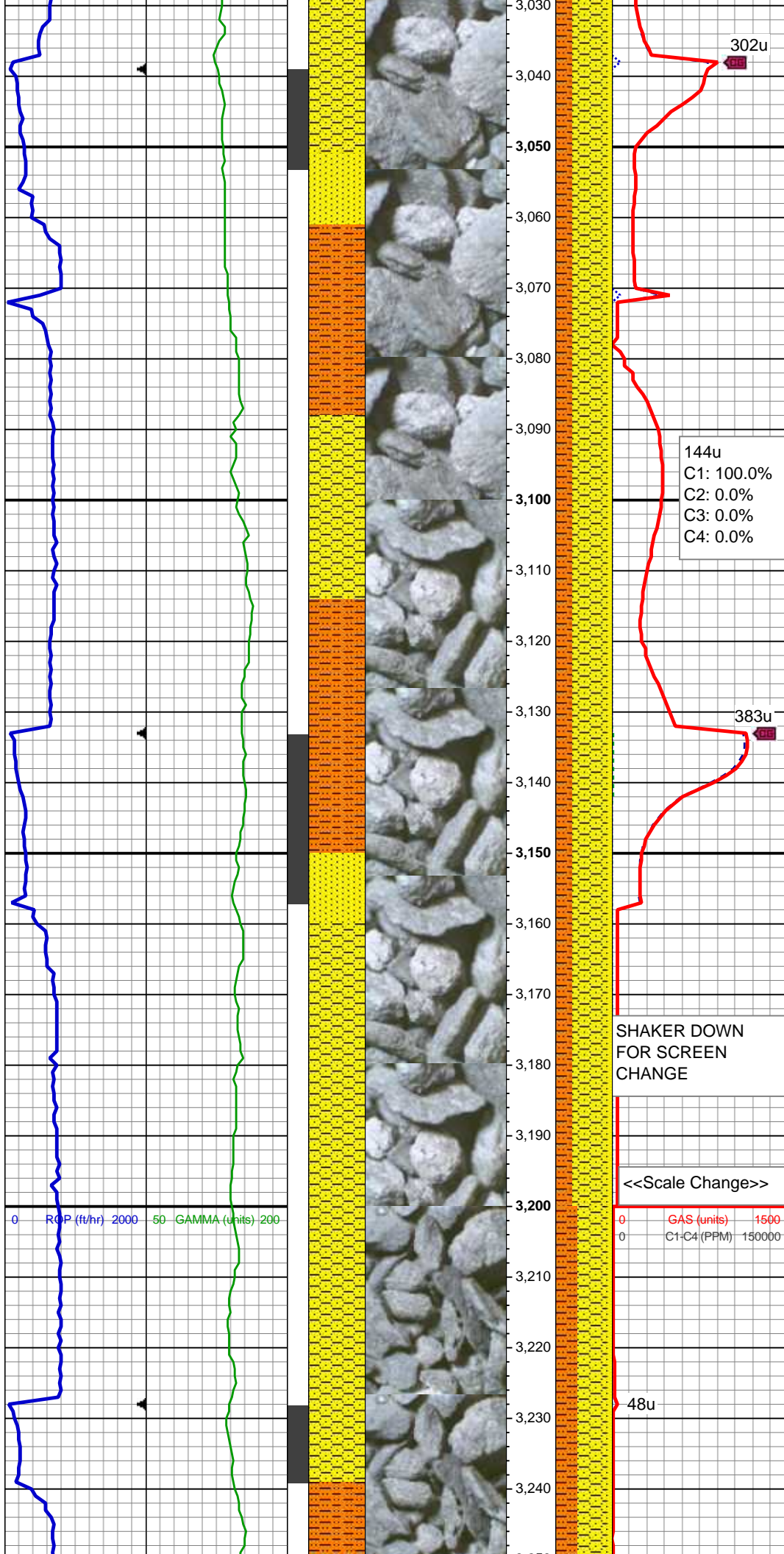
SHY SLTST: lt - med gy, frm - hd,
sme sft, sb rd - sb blk, slty - grty
tex, v sl calc
SHY SS: wh - lt gy, fros - trns, s&p,
vfg, mod hd wi brit clus, sb ang - sb
rd, calc cmt

MD: 2,891'
TVD: 2,888.38'
Inclination: 8.7 °
Azimuth: 178.29°

MUD WT: 8.7/8.7
VIS: 30/30 IN/OUT

MD: 2,986'
TVD: 2,982.15'
Inclination: 9.74 °
Azimuth: 177.14°

SHY SS: wh - lt gy, fros - trns, s&p,
vfg, mod hd wi brit clus, sb ang - sb
rd, calc cmt
SHY SLTST: lt - med gy, frm - hd,
sme sft, sb rd - sb blk, slty - grty
tex, v sl calc
SS: wh, fros - trns, speckl wi mica,
f gr, hd brit clus, ang - sb ang, glau,
v calc cmt



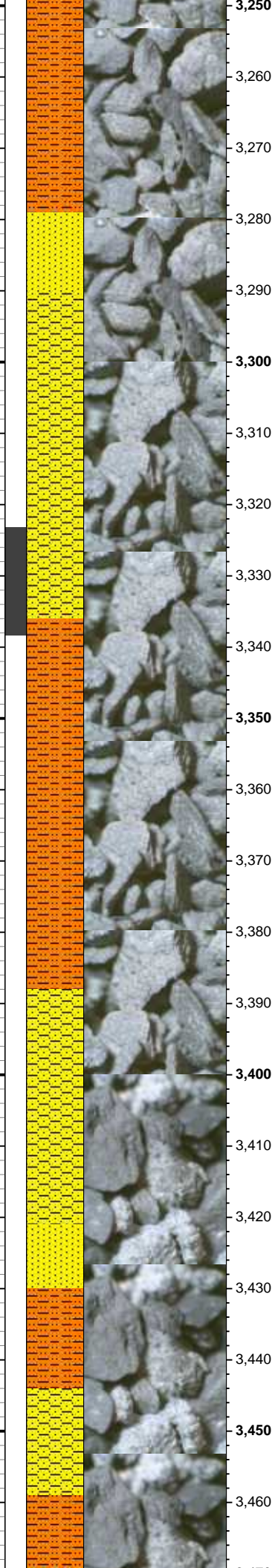
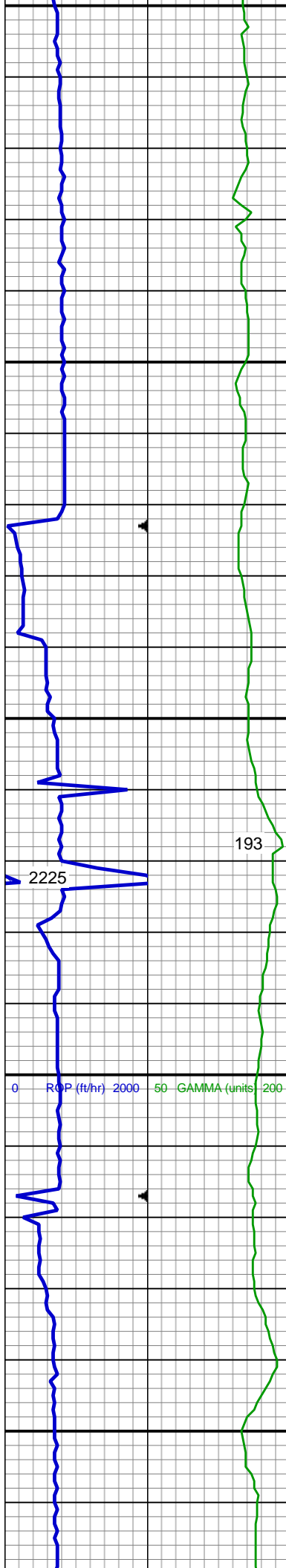
MD: 3,081'
TVD: 3,075.68'
Inclination: 10.45 °
Azimuth: 178.86 °

SHY SS: wh - lt gy, fros - trns, s&p, vfg, mod hd wi brit clus, sb ang - sb rd, calc cmt
SHY SLTST: lt - med gy, frm - hd, sme sft, sb rd - sb blk, slty - grty tex, v sl calc
SS: wh, fros - trns, speckl wi mica, f gr, hd brit clus, ang - sb ang, glau, v calc cmt

MD: 3,176'
TVD: 3,168.92'
Inclination: 11.64 °
Azimuth: 179.95 °

SHY SS: wh - lt gy, fros - trns, s&p, vfg, mod hd wi brit clus, sb ang - sb rd, calc cmt
SHY SLTST: lt - med gy, frm - hd, sme sft, sb rd - sb blk, slty - grty tex, v sl calc
SS: wh, fros - trns, speckl wi mica, f gr, hd brit clus, ang - sb ang, glau, v calc cmt

0 GAS (units) 1500
0 C1-C4 (PPM) 150000



SHAKER DOWN
FOR SCREEN
CHANGE

15u
C1: 96.8%
C2: 1.9%
C3: 0.9%
C4: 0.4%

529u

515u

MD: 3,271'
TVD: 3,262.01'
Inclination: 11.41 °
Azimuth: 176.88 °

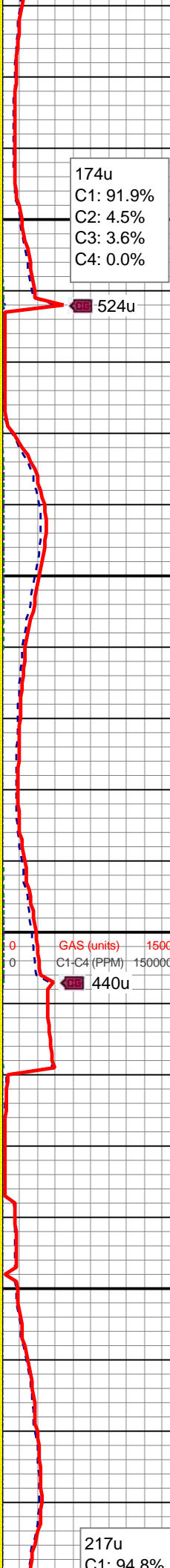
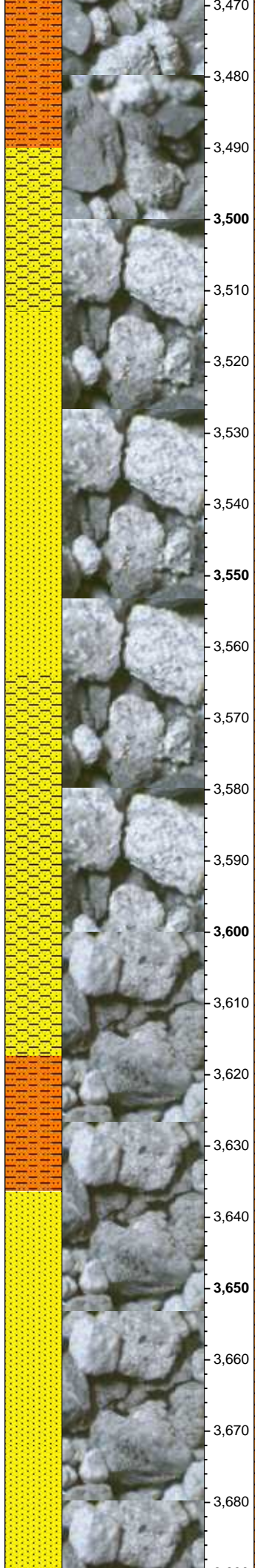
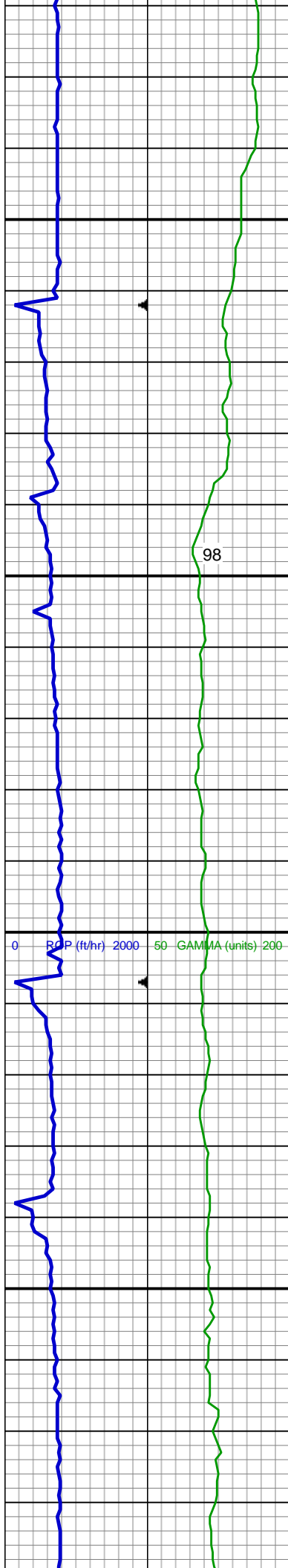
SHY SS: wh - lt gy, fros - trnsl, s&p, vfg, mod hd wi brit clus, sb ang - sb rd, calc cmt
SHY SLTST: lt - med gy, frm - hd, sme sft, sb rd - sb blkly, slty - grty tex, v sl calc
SS: wh, fros - trnsl, speckl wi mica, f gr, hd brit clus, ang - sb ang, glau, v calc cmt

MD: 3,366'
TVD: 3,354.95'
Inclination: 12.46 °
Azimuth: 177.54 °

SHY SLTST: lt - med gy, frm - hd, sme sft, sb rd - sb blkly, slty - grty tex, v sl calc
SHY SS: wh - lt gy, fros - trnsl, s&p, vfg, mod hd wi brit clus, sb ang - sb rd, calc cmt
SS: wh, fros - trnsl, speckl wi mica, f gr, hd brit clus, ang - sb ang, glau, v calc cmt

GAS (units) 1500
C1-C4 (PPM) 150000

MD: 3,461'
TVD: 3,447.98'
Inclination: 10.94 °
Azimuth: 174.51 °



SHY SLTST: lt - med gy, frm - hd, sme sft, sb rd - sb blkly, slty - grty tex, v sl calc
SHY SS: wh - lt gy, fros - trnsl, s&p, vfg, mod hd wi brit clus, sb ang - sb rd, calc cmt
SS: wh, fros - trnsl, speckl wi mica, f gr, hd brit clus, ang - sb ang, glau, v calc cmt

Parkman Top @
3,536' MD; 3,521' TVD

MD: 3,555'
TVD: 3,540.34'
Inclination: 10.46 °
Azimuth: 174.64 °

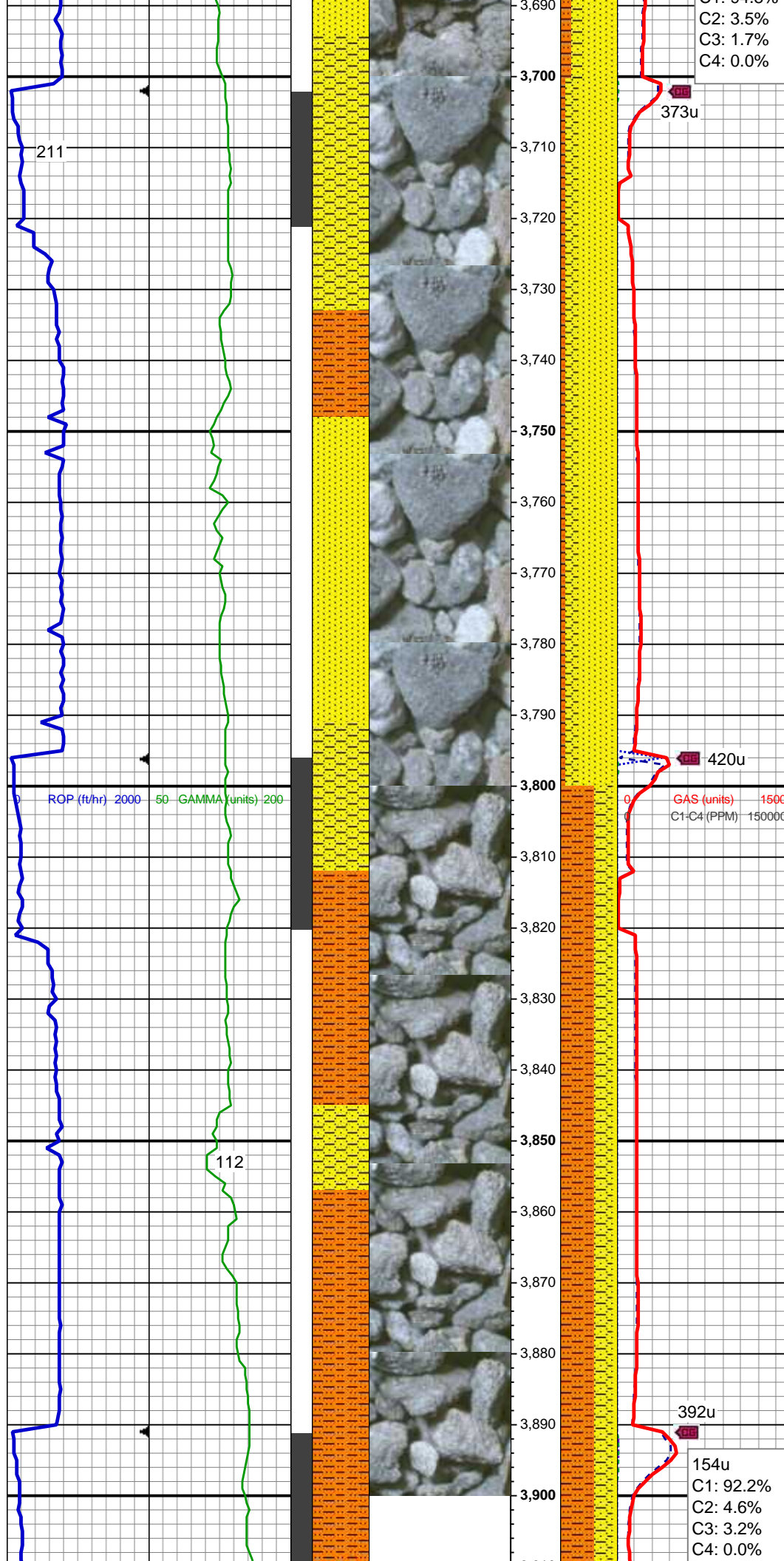
SS: wh, fros - trnsl, speckl wi mica, f gr, hd brit clus, ang - sb ang, glau, v calc cmt
SHY SS: wh - lt gy, fros - trnsl, s&p, vfg, mod hd wi brit clus, sb ang - sb rd, calc cmt
SHY SLTST: lt - med gy, frm - hd, sme sft, sb rd - sb blkly, slty - grty tex, v sl calc

MUD WT: 8.8/8.8
VIS: 34/34 IN/OUT

MD: 3,650'
TVD: 3,633.73'
Inclination: 10.74 °
Azimuth: 162.41 °

SS: wh, fros - trnsl, speckl wi mica, f gr, hd brit clus, ang - sb ang, glau, v calc cmt
SHY SS: wh - lt gy, fros - trnsl, s&p, vfg, mod hd wi brit clus, sb ang - sb rd, calc cmt

217u
C1: 94.8%



SHY SLTST: lt - med gy, frm - hd,
sme sft, sb rd - sb blk, slty - grty
tex, v sl calc

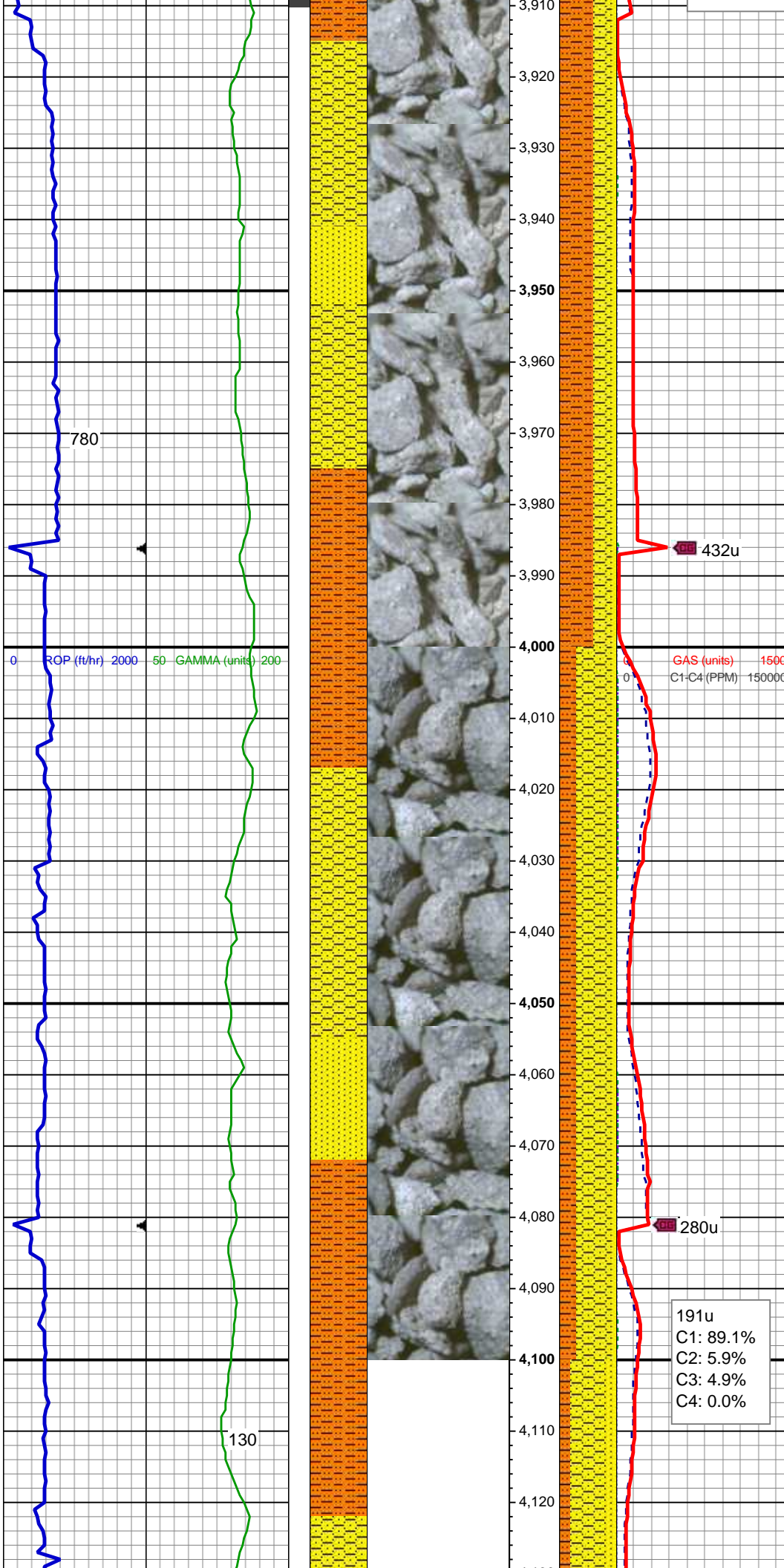
MD: 3,745'
TVD: 3,726.94'
Inclination: 11.54 °
Azimuth: 168.09 °

SS: wh, fros - trns, speckl wi mica,
f gr, hd brit clus, ang - sb ang, glau,
v calc cmt
SHY SS: wh - lt gy, fros - trns, s&p,
vfg, mod hd wi brit clus, sb ang - sb
rd, calc cmt
SHY SLTST: lt - med gy, frm - hd,
sme sft, sb rd - sb blk, slty - grty
tex, v sl calc

MD: 3,840'
TVD: 3,819.77'
Inclination: 13.03 °
Azimuth: 175.6 °

SHY SLTST: lt - med gy, frm - hd,
sme sft, sb rd - sb blk, slty - grty
tex, v sl calc
SHY SS: wh - lt gy, fros - trns, s&p,
vfg, mod hd wi brit clus, sb ang - sb
rd, calc cmt
SS: wh, fros - trns, speckl wi mica,
f gr, hd brit clus, ang - sb ang, glau,
v calc cmt

154u
C1: 92.2%
C2: 4.6%
C3: 3.2%
C4: 0.0%



MD: 3,935'
TVD: 3,912.48'
Inclination: 12.21 °
Azimuth: 183.51 °

Sussex Top @
3,941' MD; 3,918' TVD

SHY SLTST: lt - med gy, frm - hd,
sme sft, sb rd - sb blkly, slty - grty
tex, v sl calc
SHY SS: wh - lt gy, fros - trnsl, s&p,
vfg, mod hd wi brit clus, sb ang - sb
rd, calc cmt
SS: wh, fros - trnsl, speckl wi mica,
f gr, hd brit clus, ang - sb ang, glau,
v calc cmt

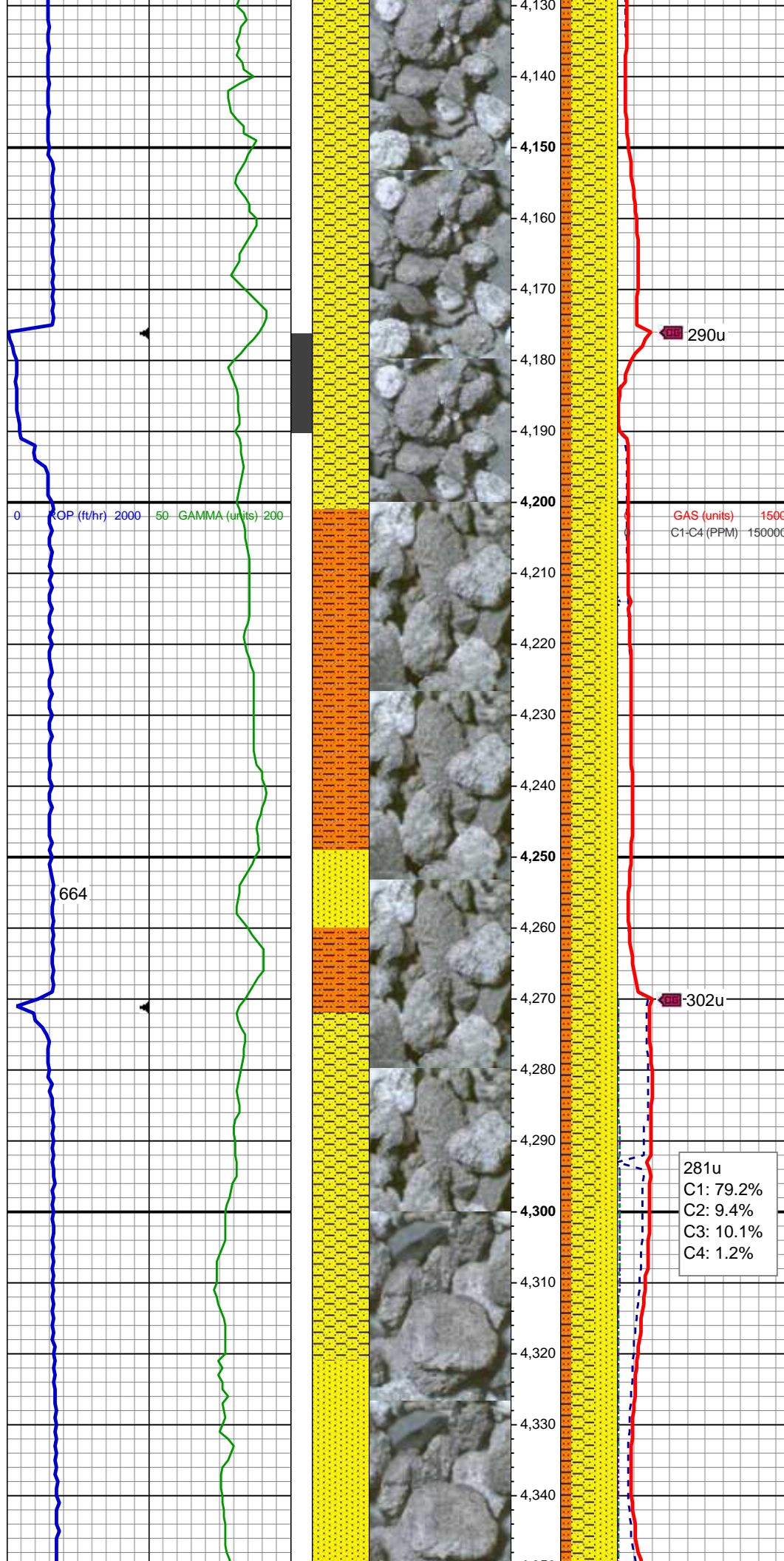
GAS (units) 1500
C1-C4 (PPM) 150000

MD: 4,029'
TVD: 4,004.54'
Inclination: 11.13 °
Azimuth: 183.24 °

SHY SS: wh - lt gy, fros - trnsl, s&p,
vfg, mod hd wi brit clus, sb ang - sb
rd, calc cmt
SHY SLTST: lt - med gy, frm - hd,
sme sft, sb rd - sb blkly, slty - grty
tex, v sl calc
SS: wh, fros - trnsl, speckl wi mica,
f gr, hd brit clus, ang - sb ang, glau,
v calc cmt

191u
C1: 89.1%
C2: 5.9%
C3: 4.9%
C4: 0.0%

MD: 4,124'
TVD: 4,097.95'
Inclination: 9.82 °
Azimuth: 182.04 °



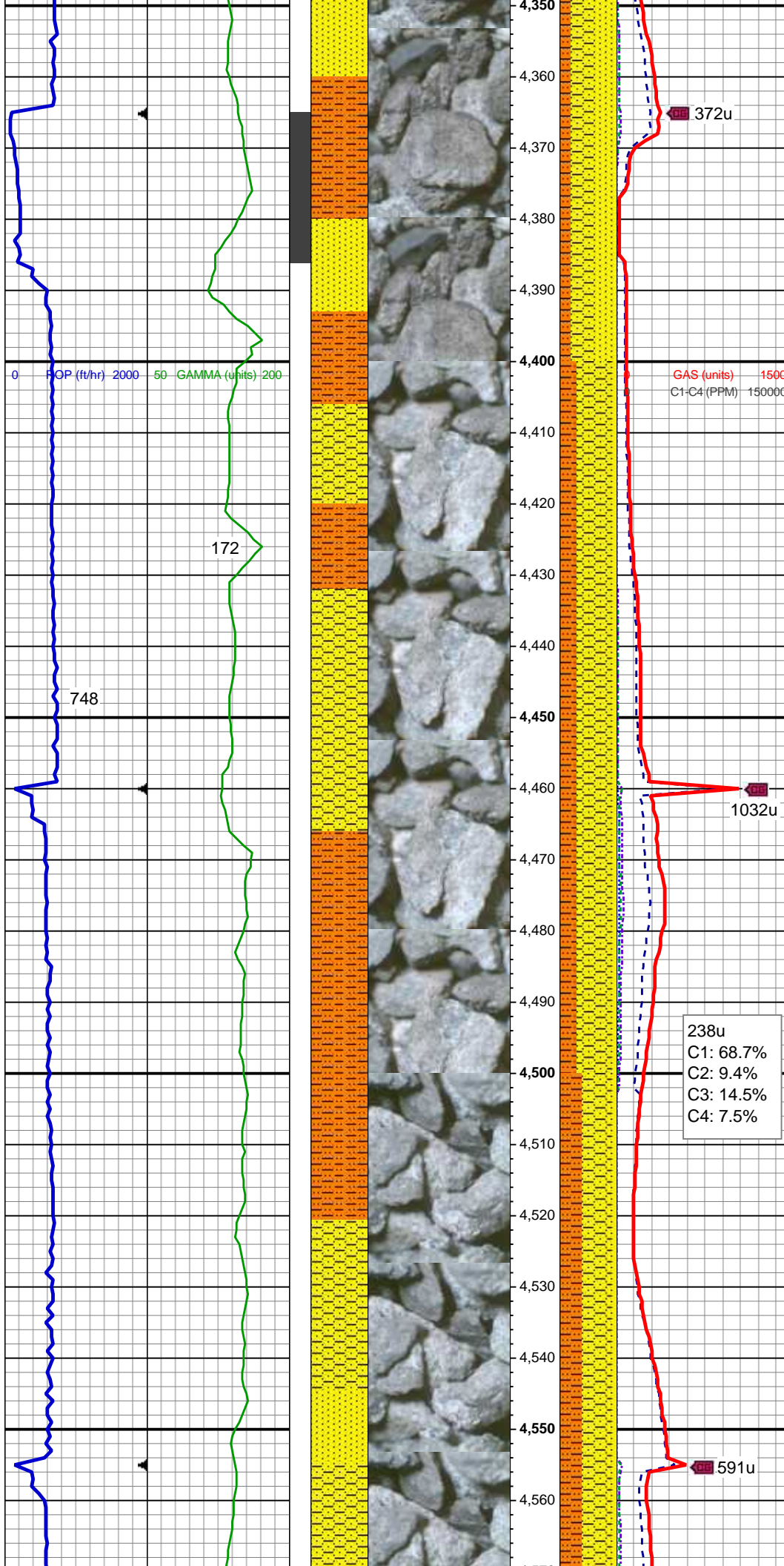
MUD WT: 8.8/9.1
VIS: 33/34 IN/OUT

SHY SS: wh - lt gy, fros - trnsl, s&p, vfg, mod hd wi brit clus, sb ang - sb rd, calc cmt
SHY SLTST: lt - med gy, frm - hd, sme sft, sb rd - sb blkly, slty - grty tex, v sl calc
SS: wh, fros - trnsl, speckl wi mica, f gr, hd brit clus, ang - sb ang, glau, v calc cmt

MD: 4,219'
TVD: 4,191.48'
Inclination: 10.36 °
Azimuth: 180.87 °

SHY SS: wh - lt gy, fros - trnsl, s&p, vfg, mod hd wi brit clus, sb ang - sb rd, calc cmt
SS: wh, fros - trnsl, speckl wi mica, f gr, hd brit clus, ang - sb ang, glau, v calc cmt
SHY SLTST: lt - med gy, frm - hd, sme sft, sb rd - sb blkly, slty - grty tex, v sl calc

MD: 4,314'
TVD: 4,285.14'
Inclination: 8.88 °
Azimuth: 179.17 °

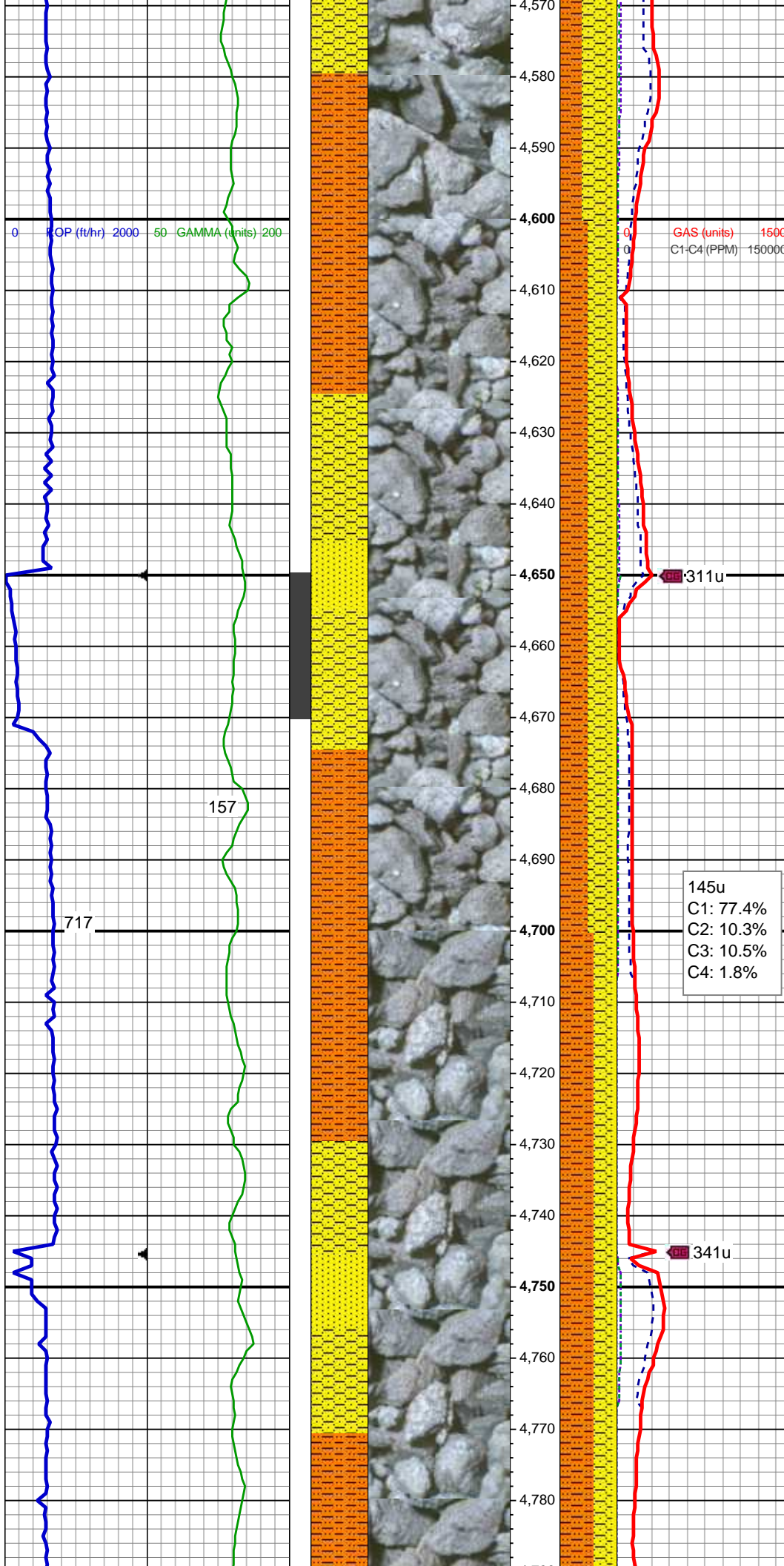


SHY SS: wh - lt gy, fros - trnsl, s&p,
vfg, mod hd wi brit clus, sb ang - sb
rd, calc cmt
SS: wh, fros - trnsl, speckl wi mica,
f gr, hd brit clus, ang - sb ang, glau,
v calc cmt
SHY SLTST: lt - med gy, frm - hd,
sme sft, sb rd - sb blkly, slty - grty
tex, v sl calc

MD: 4,409'
TVD: 4,378.9'
Inclination: 9.71 °
Azimuth: 185.48 °

SHY SS: wh - lt gy, fros - trnsl, s&p,
vfg, mod hd wi brit clus, sb ang - sb
rd, calc cmt
SHY SLTST: lt - med gy, frm - hd,
sme sft, sb rd - sb blkly, slty - grty
tex, v sl calc
SS: wh, fros - trnsl, speckl wi mica,
f gr, hd brit clus, ang - sb ang, glau,
v calc cmt

MD: 4,504'
TVD: 4,472.72'
Inclination: 8.33 °
Azimuth: 186.06 °



SHY SS: wh - lt gy, fros - trnsl, s&p, vfg, mod hd wi brit clus, sb ang - sb rd, calc cmt
SHY SLTST: lt - med gy, frm - hd, sme sft, sb rd - sb blkly, slty - grty tex, v sl calc
SS: wh, fros - trnsl, speckl wi mica, f gr, hd brit clus, ang - sb ang, glau, v calc cmt

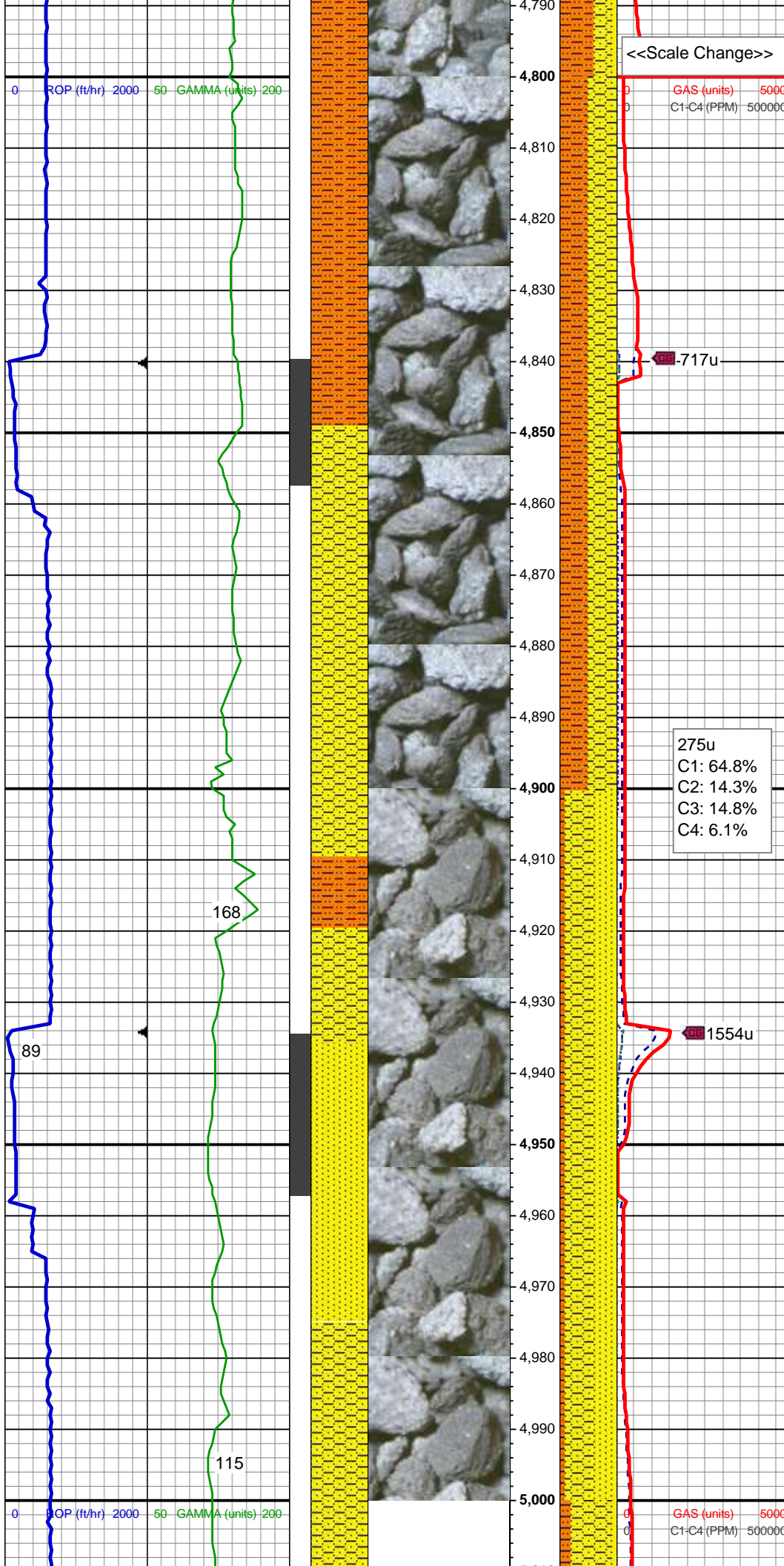
MD: 4,599'
TVD: 4,566.85'
Inclination: 7.13 °
Azimuth: 187.15 °

SHY SLTST: lt - med gy, frm - hd, sme sft, sb rd - sb blkly, slty - grty tex, v sl calc
SHY SS: wh - lt gy, fros - trnsl, s&p, vfg, mod hd wi brit clus, sb ang - sb rd, calc cmt
SS: wh, fros - trnsl, speckl wi mica, f gr, hd brit clus, ang - sb ang, glau, v calc cmt

MD: 4,694'
TVD: 4,661.2'
Inclination: 6.38 °
Azimuth: 174.51 °

SHY SLTST: lt - med gy, frm - hd, sme sft, sb rd - sb blkly, slty - grty tex, v sl calc
SHY SS: wh - lt gy, fros - trnsl, s&p, vfg, mod hd wi brit clus, sb ang - sb rd, calc cmt

MD: 4,789'
TVD: 4,755.68'
Inclination: 5.59 °
Azimuth: 175.85 °



01/18/2014
Mud Wt: 8.80
FVis: 30
PVis: 4
YP: 6
GELS: n/s
API Filt: n/s
CAKE: 1/0
pH: 9.8
Cl: 1,600
Ca: 120

Shannon Top @
4,849' MD; 4,815' TVD

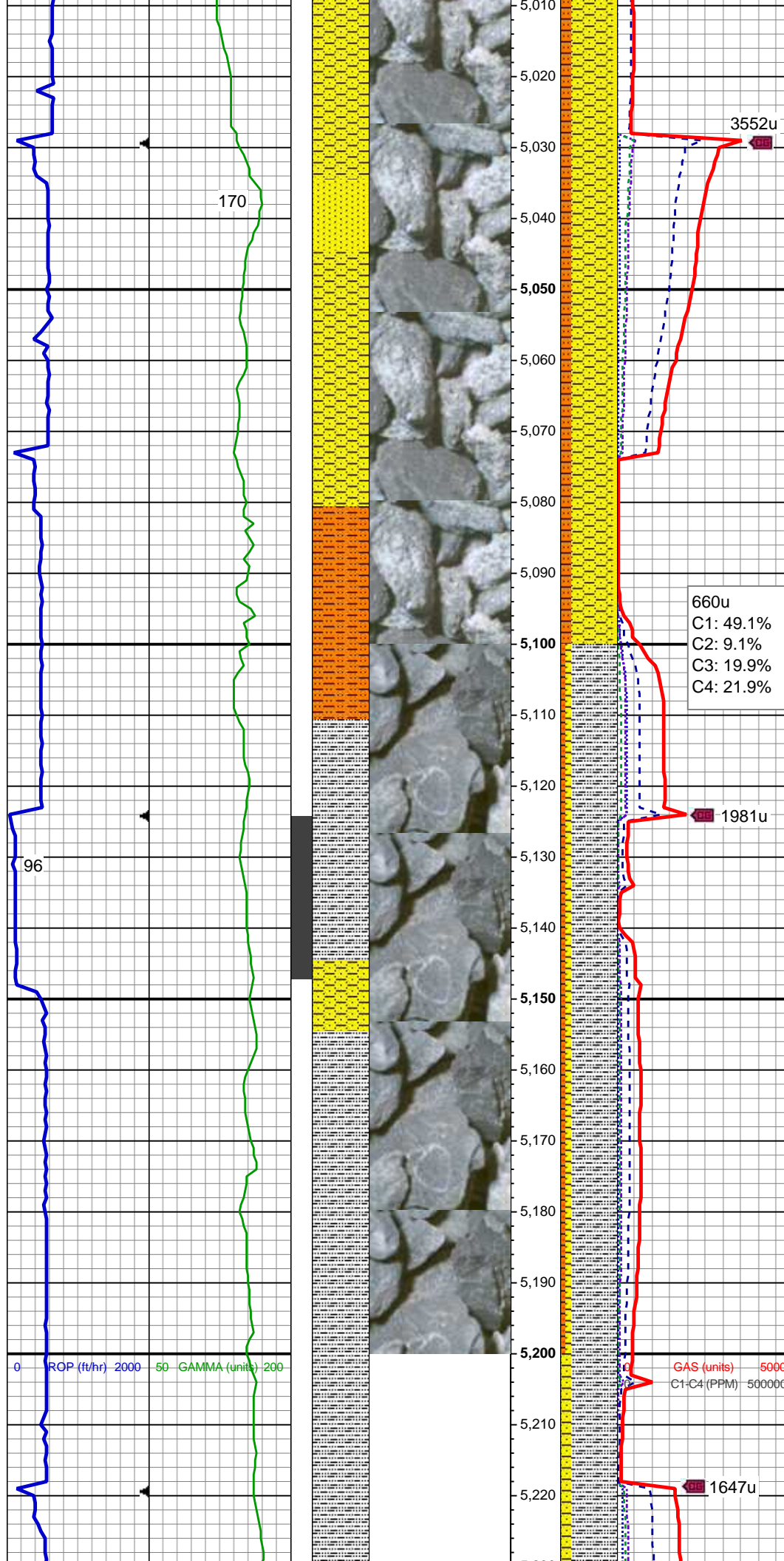
MD: 4,884'
TVD: 4,850.36'
Inclination: 3.8 °
Azimuth: 162.87 °

SHY SS: pred lt gy, fros - trnsl, s&p, vfg, mod hd wi brit clus, sb ang - sb rd, calc cmt, grdg to tr SS
SHY SLTST: lt - med gy, frm - hd, sme sft, sb rd - sb blkly, slty - grty tex, v sl calc

275u
C1: 64.8%
C2: 14.3%
C3: 14.8%
C4: 6.1%

MD: 4,979'
TVD: 4,945.24'
Inclination: 1.79 °
Azimuth: 171.81 °

SHY SS: pred lt gy, fros - trnsl, s&p, vfg, mod hd wi brit clus, sb ang - sb rd, calc cmt, grdg to
SS: wh, fros - trnsl, speckl wi mica, f gr, hd brit clus, ang - sb ang, glau, v calc cmt
SHY SLTST: lt - med gy, frm - hd, sme sft, sb rd - sb blkly, slty - grty tex, v sl calc



MD: 5,073'
TVD: 5,039.2'
Inclination: 1.89 °
Azimuth: 162.27 °

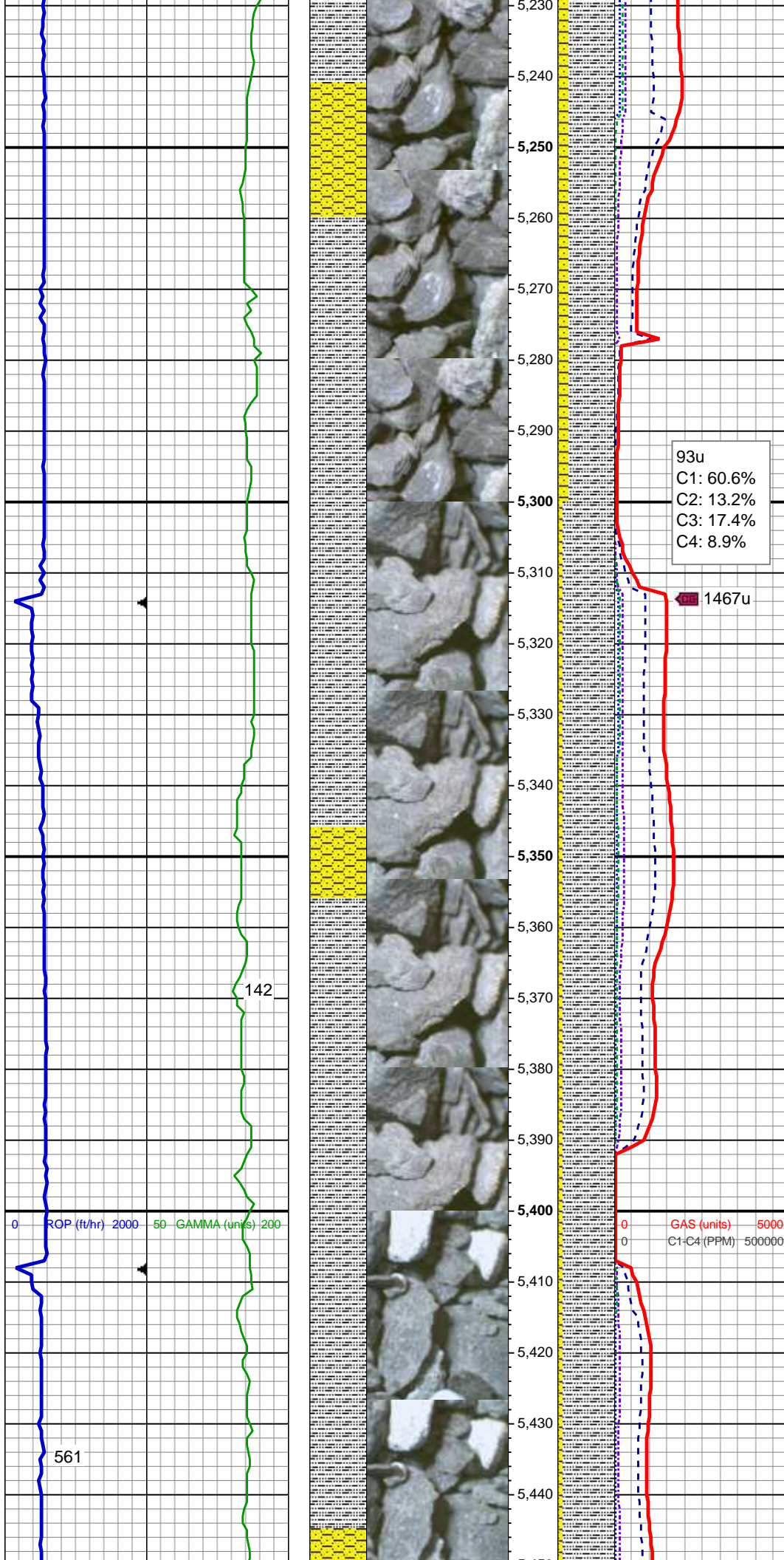
SHY SS: pred lt gy, fros - trnsl, s&p, vfg, mod hd wi brit clus, sb ang - sb rd, calc cmt
SHY SLTST: lt - med gy, frm - hd, sme sft, sb rd - sb blkly, slty - grty tex, v sl calc
SS: wh, fros - trnsl, speckl wi mica, f gr, hd brit clus, ang - sb ang, glau, v calc cmt

MUD WT: 9.50/9.50
VIS: 34/34 IN/OUT

MD: 5,168'
TVD: 5,134.18'
Inclination: 0.46 °
Azimuth: 279.36 °

SLTY SH: lt - med gy brn, occ dk gy, frm - hd, plty - sb plty - sb blkly, slty - grty tex, v sl calc
SHY SS: pred lt gy, fros - trnsl, s&p, vfg, mod hd wi brit clus, sb ang - sb rd, calc cmt
SHY SLTST: lt - med gy, frm - hd, sme sft, sb rd - sb blkly, slty - grty tex, v sl calc

GAS (units) 5000
C1-C4 (PPM) 500000



SLTY SH: pred lt gy brn, occ med
gy, frm - hd, plty - sb plty - sb blk,
slty - grty tex, v sl calc
SHY SS: pred lt gy, fros - trnsl, s&p,
vfg, mod hd wi brit clus, sb ang - sb
rd, calc cmt

93u
C1: 60.6%
C2: 13.2%
C3: 17.4%
C4: 8.9%

1467u

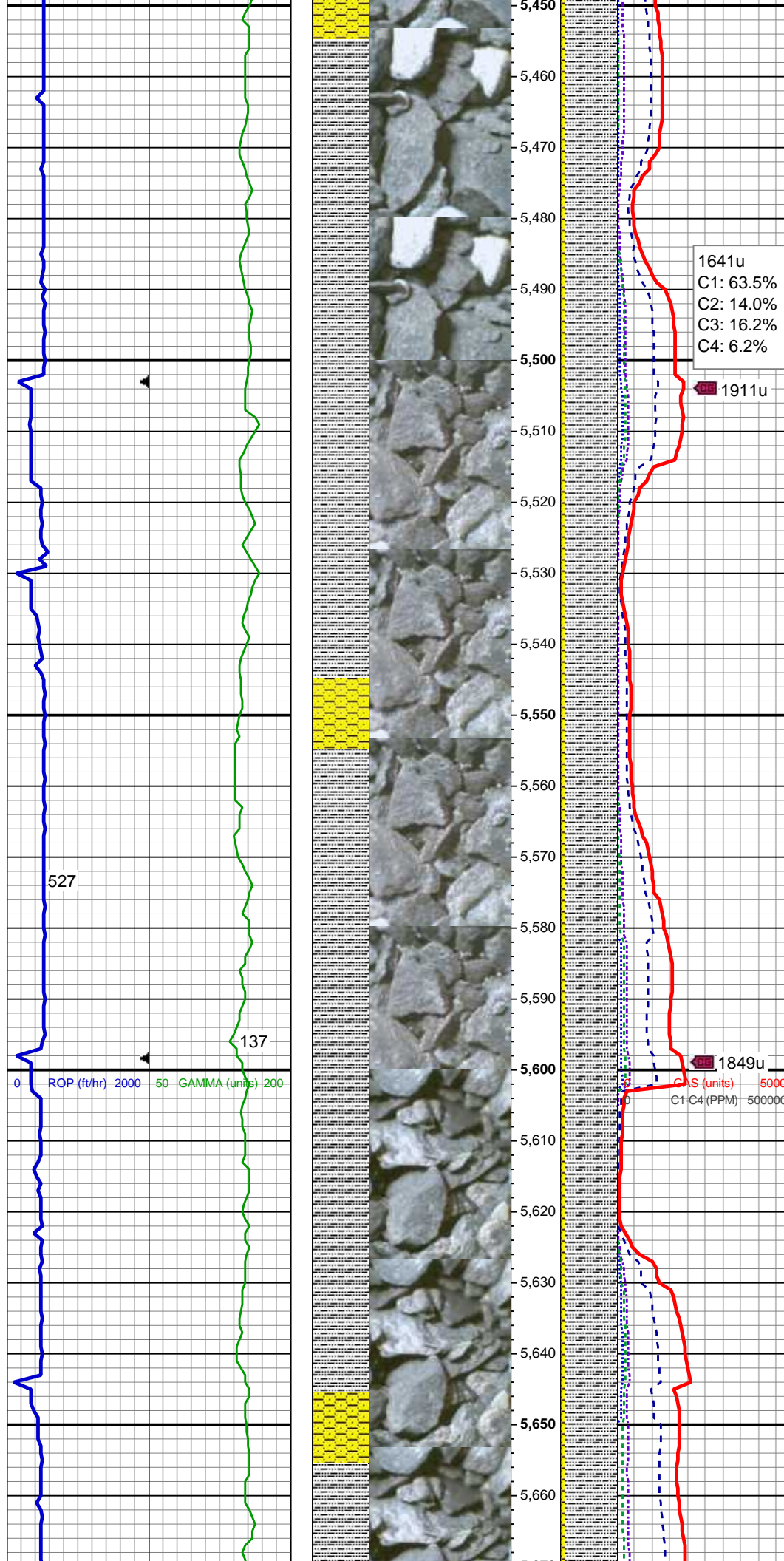
142

561

SLTY SH: pred lt gy brn, occ med
gy, frm - hd, plty - sb plty - sb blk,
slty - grty tex, v sl calc
SHY SS: pred lt gy, fros - trnsl, s&p,
vfg, mod hd wi brit clus, sb ang - sb
rd, calc cmt

GAS (units) 5000
C1-C4 (PPM) 500000

MD: 5,453
TVD: 5,419.17'
Inclination: 0.62 °
Azimuth: 60.2 °



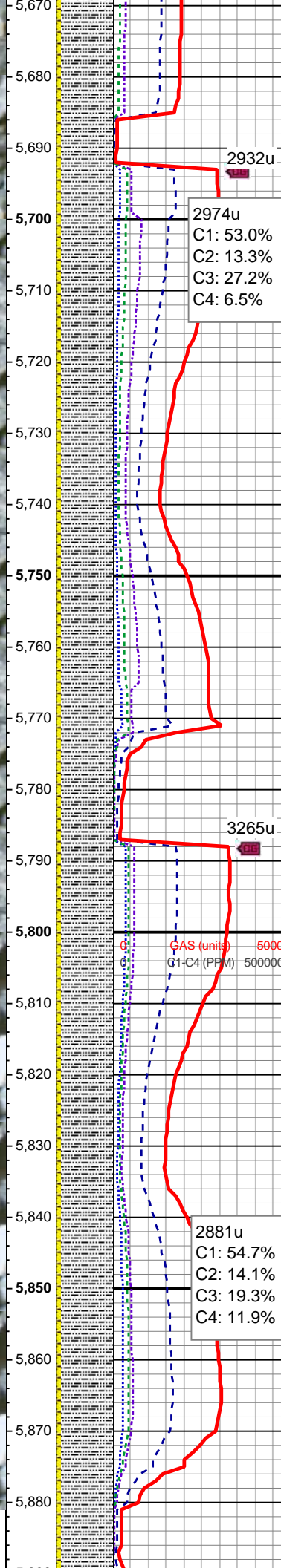
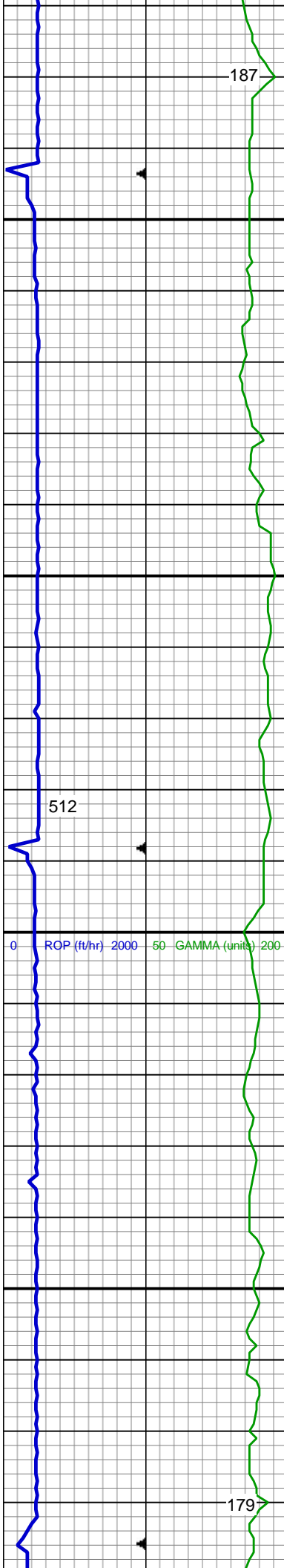
1641u
C1: 63.5%
C2: 14.0%
C3: 16.2%
C4: 6.2%

1911u

SLTY SH: pred lt gy brn, occ med
gy, frm - hd, plty - sb plty - sb blkly,
slty - grty tex, v sl calc
SHY SS: pred lt gy, fros - trnsI, s&p,
vfg, mod hd wi brit clus, sb ang - sb
rd, calc cmt

SLTY SH: pred lt gy brn, occ med
gy, frm - hd, plty - sb plty - sb blkly,
slty - grty tex, v sl calc
SHY SS: pred lt gy, fros - trnsI, s&p,
vfg, mod hd wi brit clus, sb ang - sb
rd, calc cmt

CAS (units) 5000
C1-C4 (PPM) 500000



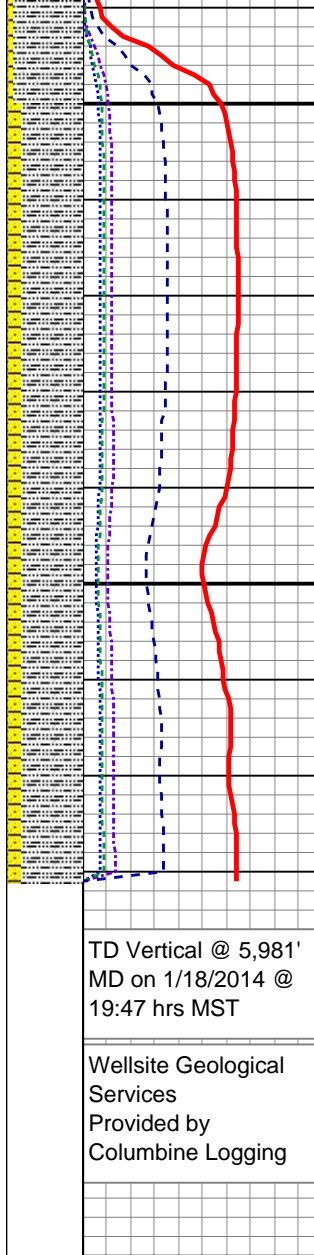
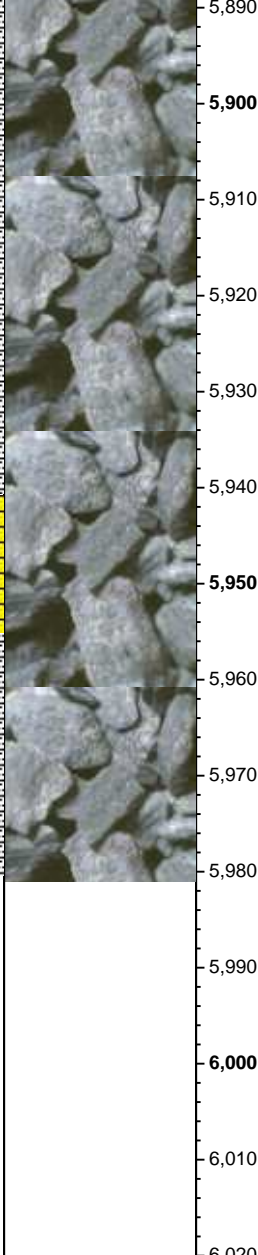
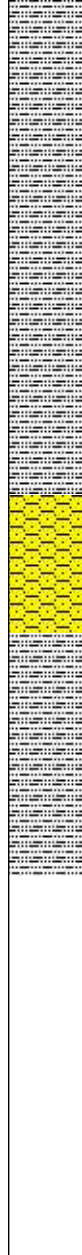
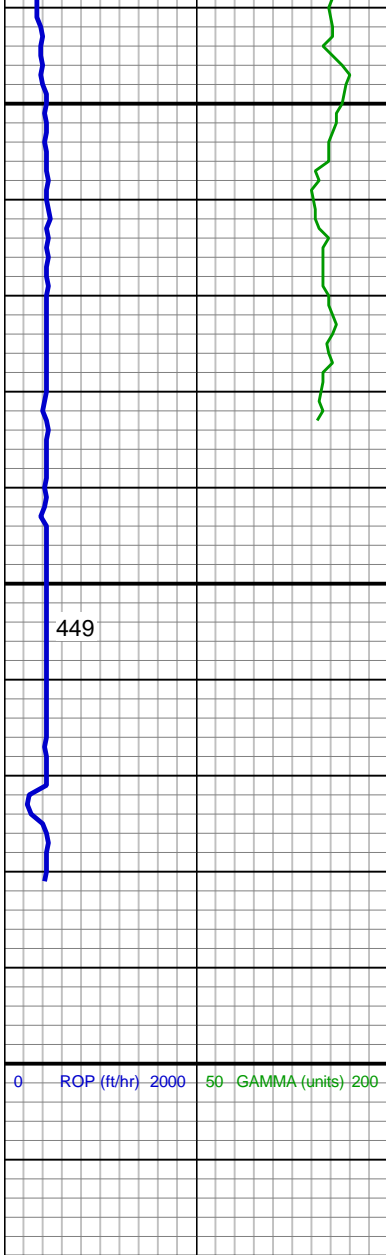
SLTY SH: pred lt gy brn, occ med
gy, frm - hd, plty - sb plty, occ sb
blky, slty - grty tex, v sl calc
SHY SS: pred lt gy, fros - trns, s&p,
vfg, mod hd wi brit clus, sb ang - sb
rd, calc cmt

MD: 5,738'
TVD: 5,704.16'
Inclination: 0.62 °
Azimuth: 157.97 °

SLTY SH: pred lt gy brn, occ med
gy, frm - hd, plty - sb plty, occ sb
blky, slty - grty tex, v sl calc
SHY SS: pred lt gy, fros - trns, s&p,
vfg, mod hd wi brit clus, sb ang - sb
rd, calc cmt

MUD WT: 9.80/9.75
VIS: 35/35 IN/OUT

SLTY SH: pred lt gy brn, occ med
gy, frm - hd, plty - sb plty, occ sb
blky, slty - grty tex, v sl calc SHY SS:



SLTY SH: pred lt gy brn, occ med
gy, frm - hd, plty - sb plty, occ sb
blky, slty - grty tex, v sl calc
SHY SS: pred lt gy, fros - trnsl, s&p,
vfg, mod hd wi brit clus, sb ang - sb
rd, calc cmt

MD: 5,925'
TVD: 5,891.16'
Inclination: 0.58 °
Azimuth: 216.93 °

Teepee Buttes Top @
5,919' MD; 5,885' TVD

Projection to Bit:
MD: 5,980'
TVD: 5,946.15'
Inclination: 0.58 °
Azimuth: 216.93 °

See Corresponding Horizontal Log
COUGAR B02-68-1HN HORZ

Wellsite Geological
Services
Provided by
Columbine Logging