

Location:	COLORADO	Slot:	SLOT#07 AGGREGATE STATE 16N-16HZ (2389'FSL & 910'FEL, SEC.09)
Field:	WELD COUNTY (KERR MCGEE)	Well:	AGGREGATE STATE 16N-16HZ
Facility:	SEC.09-T2N-R66W	Wellbore:	AGGREGATE STATE 16N-16HZ PWB

Plot reference wellpath is AGGREGATE STATE 16N-16HZ (REV-A.0) PWP

True vertical depths are referenced to ENSIGN 145 (13KB) (RKB)

Grid System: NAD83 / Lambert Colorado SP, Northern Zone (501), US feet

Measured depths are referenced to ENSIGN 145 (13KB) (RKB)

	North Reference: True north
--	-----------------------------

ENSIGN 145 (13KB) (RKB) to Mean Sea Level: 4937 feet

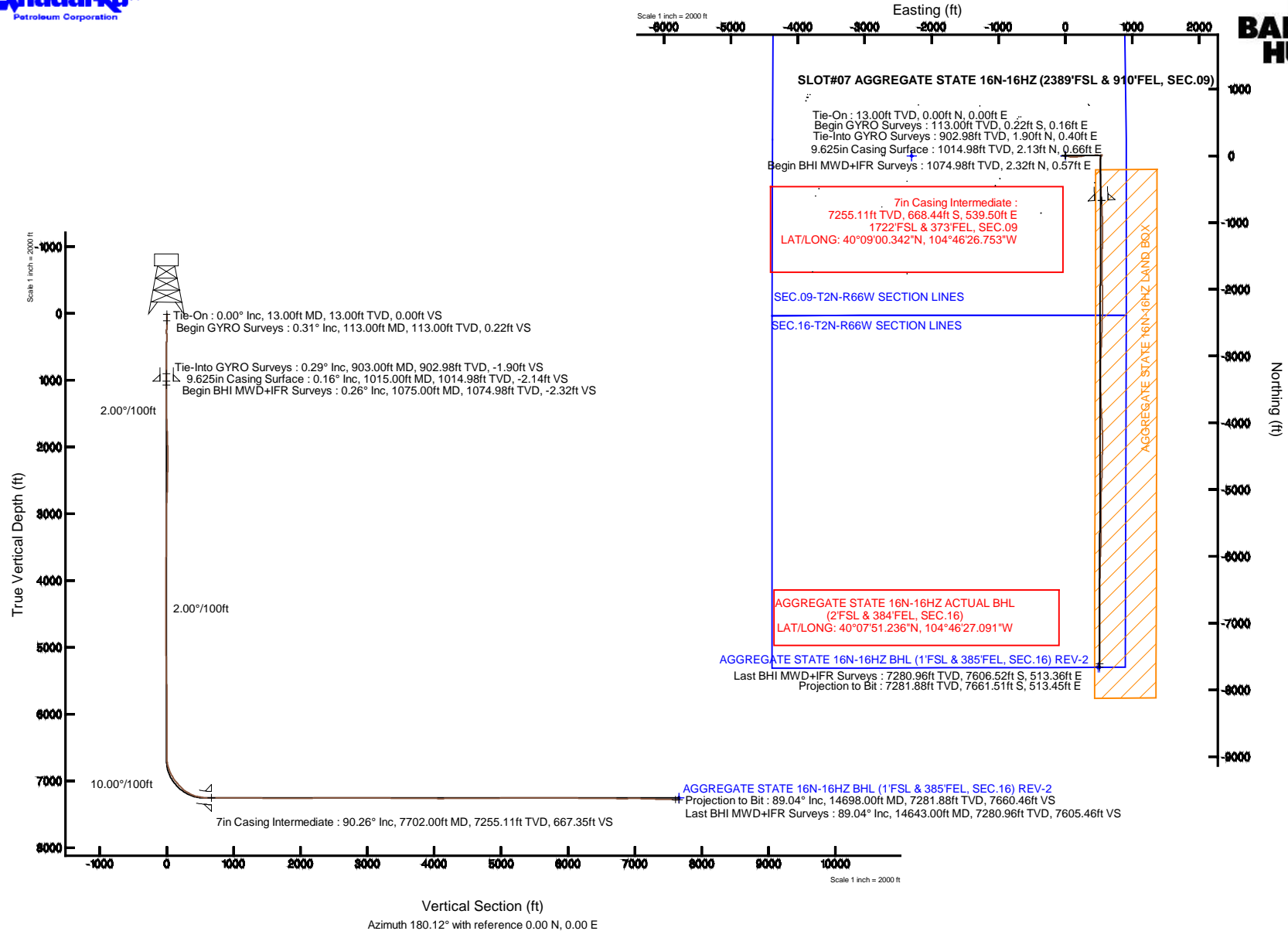
	Scale: True dista

Mean Sea Level to Mud line (At Slot: SLOT#07 AGGREGATE STATE 16N-16HZ (2389'FSL & 910'FEL, SEC.09)): 0 feet

Depths are in feet

Coordinates are in feet referenced to Slot

Created by: precain on 21/May/2014



REFERENCE WELLPATH IDENTIFICATION			
Operator	KERR-MCGEE OIL & GAS ONSHORE LP	Slot	SLOT#07 AGGREGATE STATE 16N-16HZ (2389'FSL & 910'FEL, SEC.09)
Area	COLORADO	Well	AGGREGATE STATE 16N-16HZ
Field	WELD COUNTY (KERR MCGEE)	Wellbore	AGGREGATE STATE 16N-16HZ AWB
Facility	SEC.09-T2N-R66W		

REPORT SETUP INFORMATION			
Projection System	NAD83 / Lambert Colorado SP, Northern Zone (501), US feet	Software System	WellArchitect® 4.0.0
North Reference	True	User	Precain
Scale	0.999958	Report Generated	21/May/2014 at 08:34
Convergence at slot	n/a	Database/Source file	WellArchitectDB/AGGREGATE_STATE_16N-16HZ_AWB.xml

WELLPATH LOCATION						
	Local coordinates		Grid coordinates		Geographic coordinates	
	North[ft]	East[ft]	Easting[US ft]	Northing[US ft]	Latitude	Longitude
Slot Location	-768.66	-343.29	3202369.24	1299017.54	40°09'06.948"N	104°46'33.701"W
Facility Reference Pt			3202706.22	1299788.95	40°09'14.544"N	104°46'29.280"W
Field Reference Pt			3197771.84	1268891.29	40°04'09.600"N	104°47'36.000"W

WELLPATH DATUM			
Calculation method	Minimum curvature	ENSIGN 145 (13'KB) (RKB) to Facility Vertical Datum	4937.00ft
Horizontal Reference Pt	Slot	ENSIGN 145 (13'KB) (RKB) to Mean Sea Level	4937.00ft
Vertical Reference Pt	ENSIGN 145 (13'KB) (RKB)	ENSIGN 145 (13'KB) (RKB) to Mud Line at Slot (SLOT#07 AGGREGATE STATE 16N-16HZ (2389'FSL & 910'FEL, SEC.09))	4937.00ft
MD Reference Pt	ENSIGN 145 (13'KB) (RKB)	Section Origin	N 0.00, E 0.00 ft
Field Vertical Reference	Mean Sea Level	Section Azimuth	180.12°

REFERENCE WELLPATH IDENTIFICATION			
Operator	KERR-MCGEE OIL & GAS ONSHORE LP	Slot	SLOT#07 AGGREGATE STATE 16N-16HZ (2389'FSL & 910'FEL, SEC.09)
Area	COLORADO	Well	AGGREGATE STATE 16N-16HZ
Field	WELD COUNTY (KERR MCGEE)	Wellbore	AGGREGATE STATE 16N-16HZ AWB
Facility	SEC.09-T2N-R66W		

### WELLPATH DATA (159 stations) † = interpolated/extrapolated station

MD [ft]	Inclination [°]	Azimuth [°]	TVD [ft]	Vert Sect [ft]	North [ft]	East [ft]	Latitude	Longitude	DLS [°/100ft]	Comments
0.00†	0.000	143.520	0.00	0.00	0.00	0.00	40°09'06.948"N	104°46'33.701"W	0.00	
13.00	0.000	143.520	13.00	0.00	0.00	0.00	40°09'06.948"N	104°46'33.701"W	0.00	Tie-On
113.00	0.310	143.520	113.00	0.22	-0.22	0.16	40°09'06.946"N	104°46'33.699"W	0.31	Begin GYRO Surveys
213.00	0.390	5.580	213.00	0.10	-0.10	0.35	40°09'06.947"N	104°46'33.696"W	0.65	
313.00	0.350	198.650	313.00	0.05	-0.05	0.29	40°09'06.948"N	104°46'33.697"W	0.74	
413.00	0.540	312.500	413.00	0.02	-0.02	-0.15	40°09'06.948"N	104°46'33.703"W	0.75	
513.00	0.620	310.300	512.99	-0.65	0.65	-0.91	40°09'06.954"N	104°46'33.713"W	0.08	
613.00	0.130	130.750	612.99	-0.92	0.93	-1.24	40°09'06.957"N	104°46'33.717"W	0.75	
713.00	0.570	47.270	712.99	-1.19	1.19	-0.79	40°09'06.960"N	104°46'33.711"W	0.57	
813.00	0.410	62.370	812.98	-1.69	1.69	-0.11	40°09'06.965"N	104°46'33.702"W	0.20	
903.00	0.290	74.300	902.98	-1.90	1.90	0.40	40°09'06.967"N	104°46'33.696"W	0.16	Tie-Into GYRO Surveys
1075.00	0.260	320.310	1074.98	-2.32	2.32	0.57	40°09'06.971"N	104°46'33.694"W	0.27	Begin BHI MWD+IFR Surveys
1168.00	0.740	81.510	1167.98	-2.58	2.57	1.03	40°09'06.973"N	104°46'33.688"W	0.97	
1262.00	2.590	70.720	1261.94	-3.37	3.36	3.63	40°09'06.981"N	104°46'33.654"W	1.99	
1355.00	4.300	91.350	1354.77	-3.99	3.98	9.10	40°09'06.987"N	104°46'33.584"W	2.24	
1449.00	6.680	98.490	1448.33	-3.12	3.09	18.03	40°09'06.978"N	104°46'33.469"W	2.63	
1542.00	4.820	108.880	1540.86	-1.08	1.02	27.08	40°09'06.958"N	104°46'33.352"W	2.28	
1636.00	5.590	111.160	1634.47	1.84	-1.91	35.09	40°09'06.929"N	104°46'33.249"W	0.85	
1729.00	7.400	113.910	1726.87	5.88	-5.97	44.79	40°09'06.889"N	104°46'33.124"W	1.97	
1823.00	8.120	106.480	1820.01	10.19	-10.31	56.69	40°09'06.846"N	104°46'32.971"W	1.31	
1916.00	9.470	99.970	1911.92	13.35	-13.50	70.52	40°09'06.815"N	104°46'32.793"W	1.80	
2010.00	10.700	95.490	2004.47	15.49	-15.67	86.82	40°09'06.793"N	104°46'32.583"W	1.55	
2103.00	12.510	92.600	2095.56	16.74	-16.95	105.48	40°09'06.780"N	104°46'32.343"W	2.04	
2197.00	13.000	87.620	2187.25	16.72	-16.98	126.22	40°09'06.780"N	104°46'32.076"W	1.28	
2290.00	13.020	87.880	2277.86	15.86	-16.15	147.14	40°09'06.788"N	104°46'31.806"W	0.07	
2383.00	13.450	86.870	2368.39	14.83	-15.18	168.41	40°09'06.798"N	104°46'31.532"W	0.52	
2477.00	13.160	84.930	2459.87	13.25	-13.63	189.98	40°09'06.813"N	104°46'31.254"W	0.57	
2569.00	12.950	83.410	2549.49	11.10	-11.52	210.65	40°09'06.834"N	104°46'30.988"W	0.44	
2663.00	11.650	82.360	2641.33	8.59	-9.05	230.52	40°09'06.859"N	104°46'30.732"W	1.40	
2753.00	12.610	78.860	2729.32	5.44	-5.95	249.17	40°09'06.889"N	104°46'30.492"W	1.34	
2843.00	11.260	74.170	2817.37	1.11	-1.65	267.26	40°09'06.932"N	104°46'30.259"W	1.85	
2933.00	10.740	78.730	2905.72	-2.96	2.38	283.94	40°09'06.972"N	104°46'30.044"W	1.13	
3023.00	9.780	80.970	2994.28	-5.83	5.22	299.71	40°09'07.000"N	104°46'29.841"W	1.15	
3113.00	9.430	88.300	3083.02	-7.28	6.64	314.63	40°09'07.014"N	104°46'29.649"W	1.41	
3203.00	9.540	93.140	3171.79	-7.12	6.45	329.45	40°09'07.012"N	104°46'29.458"W	0.89	
3293.00	10.370	94.300	3260.44	-6.13	5.44	344.98	40°09'07.002"N	104°46'29.258"W	0.95	
3383.00	10.050	91.210	3349.01	-5.39	4.66	360.90	40°09'06.994"N	104°46'29.053"W	0.70	
3473.00	9.150	89.540	3437.75	-5.31	4.55	375.91	40°09'06.993"N	104°46'28.860"W	1.05	
3563.00	9.930	85.640	3526.51	-5.99	5.20	390.80	40°09'06.999"N	104°46'28.668"W	1.13	
3653.00	10.730	87.200	3615.05	-7.02	6.20	406.91	40°09'07.009"N	104°46'28.461"W	0.94	
3743.00	11.080	86.430	3703.42	-8.01	7.15	423.91	40°09'07.019"N	104°46'28.242"W	0.42	
3833.00	10.240	87.820	3791.87	-8.88	7.99	440.54	40°09'07.027"N	104°46'28.028"W	0.98	
3923.00	8.880	88.570	3880.62	-9.39	8.47	455.47	40°09'07.032"N	104°46'27.835"W	1.52	
4013.00	8.860	91.130	3969.54	-9.46	8.51	469.35	40°09'07.032"N	104°46'27.657"W	0.44	
4103.00	9.150	93.560	4058.43	-8.90	7.92	483.42	40°09'07.026"N	104°46'27.475"W	0.53	

REFERENCE WELLPATH IDENTIFICATION			
Operator	KERR-MCGEE OIL & GAS ONSHORE LP	Slot	SLOT#07 AGGREGATE STATE 16N-16HZ (2389'FSL & 910'FEL, SEC.09)
Area	COLORADO	Well	AGGREGATE STATE 16N-16HZ
Field	WELD COUNTY (KERR MCGEE)	Wellbore	AGGREGATE STATE 16N-16HZ AWB
Facility	SEC.09-T2N-R66W		

WELLPATH DATA (159 stations) † = interpolated/extrapolated station										
MD [ft]	Inclination [°]	Azimuth [°]	TVD [ft]	Vert Sect [ft]	North [ft]	East [ft]	Latitude	Longitude	DLS [°/100ft]	Comments
4193.00	8.830	92.310	4147.33	-8.21	7.20	497.46	40°09'07.019"N	104°46'27.295"W	0.42	
4283.00	8.440	90.220	4236.31	-7.93	6.90	510.97	40°09'07.016"N	104°46'27.121"W	0.56	
4373.00	6.740	89.970	4325.52	-7.93	6.88	522.86	40°09'07.016"N	104°46'26.968"W	1.89	
4463.00	5.870	77.640	4414.97	-8.94	7.86	532.64	40°09'07.026"N	104°46'26.842"W	1.78	
4553.00	4.250	81.480	4504.62	-10.44	9.34	540.43	40°09'07.040"N	104°46'26.741"W	1.84	
4644.00	2.880	77.020	4595.44	-11.46	10.36	545.99	40°09'07.050"N	104°46'26.670"W	1.53	
4734.00	2.070	61.550	4685.36	-12.75	11.64	549.63	40°09'07.063"N	104°46'26.623"W	1.16	
4824.00	0.340	138.730	4775.34	-13.33	12.21	551.23	40°09'07.069"N	104°46'26.602"W	2.25	
4914.00	1.260	238.400	4865.33	-12.61	11.49	550.56	40°09'07.062"N	104°46'26.611"W	1.51	
5094.00	1.860	224.890	5045.26	-9.49	8.39	546.82	40°09'07.031"N	104°46'26.659"W	0.39	
5454.00	1.320	225.300	5405.12	-2.42	1.33	539.75	40°09'06.961"N	104°46'26.750"W	0.15	
5724.00	1.130	226.410	5675.06	1.61	-2.69	535.61	40°09'06.921"N	104°46'26.803"W	0.07	
6084.00	0.420	257.410	6035.03	4.35	-5.43	531.75	40°09'06.894"N	104°46'26.853"W	0.22	
6444.00	0.530	289.000	6395.02	4.10	-5.17	528.89	40°09'06.897"N	104°46'26.890"W	0.08	
6644.00	1.010	312.130	6595.00	2.62	-3.69	526.70	40°09'06.911"N	104°46'26.918"W	0.28	
6714.00	1.210	191.440	6664.99	2.94	-4.00	526.10	40°09'06.908"N	104°46'26.926"W	2.76	
6759.00	6.550	184.300	6709.87	5.96	-7.03	525.81	40°09'06.878"N	104°46'26.929"W	11.89	
6804.00	11.990	185.400	6754.27	13.18	-14.25	525.18	40°09'06.807"N	104°46'26.938"W	12.09	
6849.00	16.580	186.320	6797.86	24.23	-25.29	524.03	40°09'06.698"N	104°46'26.952"W	10.21	
6894.00	21.920	185.530	6840.33	38.98	-40.04	522.52	40°09'06.552"N	104°46'26.972"W	11.88	
6939.00	26.200	183.810	6881.41	57.27	-58.32	521.05	40°09'06.372"N	104°46'26.991"W	9.64	
6984.00	28.700	185.320	6921.35	77.94	-78.99	519.38	40°09'06.167"N	104°46'27.012"W	5.77	
7029.00	31.120	184.530	6960.35	100.30	-101.35	517.46	40°09'05.946"N	104°46'27.037"W	5.45	
7074.00	36.490	181.010	6997.73	125.29	-126.34	516.31	40°09'05.699"N	104°46'27.052"W	12.70	
7119.00	42.390	177.820	7032.47	153.86	-154.90	516.65	40°09'05.417"N	104°46'27.048"W	13.86	
7164.00	43.730	176.400	7065.35	184.54	-185.59	518.20	40°09'05.114"N	104°46'27.028"W	3.68	
7209.00	43.940	176.600	7097.81	215.64	-216.70	520.11	40°09'04.807"N	104°46'27.003"W	0.56	
7254.00	49.690	177.570	7128.60	248.39	-249.45	521.76	40°09'04.483"N	104°46'26.982"W	12.87	
7299.00	56.240	178.890	7155.68	284.28	-285.34	522.85	40°09'04.128"N	104°46'26.968"W	14.74	
7344.00	60.480	179.090	7179.29	322.57	-323.63	523.53	40°09'03.750"N	104°46'26.959"W	9.43	
7389.00	63.930	177.600	7200.27	362.35	-363.42	524.68	40°09'03.357"N	104°46'26.944"W	8.21	
7434.00	69.760	176.260	7217.96	403.64	-404.71	526.91	40°09'02.949"N	104°46'26.915"W	13.24	
7479.00	76.220	176.590	7231.11	446.56	-447.64	529.59	40°09'02.524"N	104°46'26.881"W	14.37	
7524.00	79.780	178.170	7240.47	490.52	-491.60	531.60	40°09'02.090"N	104°46'26.855"W	8.62	
7569.00	81.600	177.730	7247.75	534.90	-535.98	533.18	40°09'01.651"N	104°46'26.835"W	4.16	
7614.00	84.900	177.240	7253.04	579.53	-580.61	535.15	40°09'01.210"N	104°46'26.809"W	7.41	
7658.00	89.720	177.200	7255.10	623.41	-624.50	537.28	40°09'00.777"N	104°46'26.782"W	10.95	
7702.00†	90.260	177.001	7255.11	667.35	-668.44	539.50	40°09'00.342"N	104°46'26.753"W	1.31	7" Casing Point
7733.00	90.640	176.860	7254.86	698.30	-699.40	541.16	40°09'00.036"N	104°46'26.732"W	1.31	
7764.00	90.270	176.180	7254.62	729.24	-730.34	543.04	40°08'59.731"N	104°46'26.708"W	2.50	
7858.00	90.120	177.300	7254.30	823.07	-824.19	548.39	40°08'58.803"N	104°46'26.639"W	1.20	
7951.00	90.700	177.520	7253.63	915.97	-917.09	552.59	40°08'57.885"N	104°46'26.585"W	0.67	
8045.00	90.360	179.780	7252.76	1009.93	-1011.05	554.81	40°08'56.957"N	104°46'26.556"W	2.43	
8138.00	89.660	180.340	7252.75	1102.93	-1104.05	554.71	40°08'56.038"N	104°46'26.558"W	0.96	
8232.00	89.070	180.170	7253.79	1196.92	-1198.04	554.29	40°08'55.109"N	104°46'26.563"W	0.65	

REFERENCE WELLPATH IDENTIFICATION				
Operator	KERR-MCGEE OIL & GAS ONSHORE LP	Slot	SLOT#07 AGGREGATE STATE 16N-16HZ (2389'FSL & 910'FEL, SEC.09)	
Area	COLORADO	Well	AGGREGATE STATE 16N-16HZ	
Field	WELD COUNTY (KERR MCGEE)	Wellbore	AGGREGATE STATE 16N-16HZ AWB	
Facility	SEC.09-T2N-R66W			

### WELLPATH DATA (159 stations)

MD [ft]	Inclination [°]	Azimuth [°]	TVD [ft]	Vert Sect [ft]	North [ft]	East [ft]	Latitude	Longitude	DLS [°/100ft]	Comments
8419.00	88.890	181.210	7257.12	1383.88	-1385.00	552.04	40°08'53.261"N	104°46'26.592"W	0.56	
8512.00	88.820	181.300	7258.98	1476.84	-1477.96	550.00	40°08'52.343"N	104°46'26.618"W	0.12	
8605.00	90.490	180.580	7259.54	1569.83	-1570.94	548.48	40°08'51.424"N	104°46'26.638"W	1.96	
8699.00	89.870	179.690	7259.24	1663.82	-1664.94	548.26	40°08'50.495"N	104°46'26.641"W	1.15	
8792.00	90.060	179.330	7259.30	1756.82	-1757.93	549.05	40°08'49.576"N	104°46'26.631"W	0.44	
8885.00	90.610	179.240	7258.75	1849.81	-1850.92	550.21	40°08'48.657"N	104°46'26.616"W	0.60	
8978.00	89.810	178.430	7258.41	1942.78	-1943.90	552.10	40°08'47.738"N	104°46'26.591"W	1.22	
9068.00	89.840	179.320	7258.69	2032.76	-2033.88	553.87	40°08'46.849"N	104°46'26.569"W	0.99	
9158.00	90.300	179.580	7258.58	2122.75	-2123.88	554.73	40°08'45.960"N	104°46'26.558"W	0.59	
9248.00	90.980	180.710	7257.57	2212.74	-2213.87	554.51	40°08'45.070"N	104°46'26.561"W	1.47	
9338.00	90.890	180.550	7256.10	2302.73	-2303.85	553.52	40°08'44.181"N	104°46'26.573"W	0.20	
9428.00	91.200	181.010	7254.46	2392.71	-2393.83	552.29	40°08'43.292"N	104°46'26.589"W	0.62	
9518.00	90.180	181.030	7253.38	2482.69	-2483.81	550.69	40°08'42.403"N	104°46'26.610"W	1.13	
9608.00	89.690	182.280	7253.48	2572.65	-2573.77	548.09	40°08'41.514"N	104°46'26.643"W	1.49	
9698.00	89.530	182.400	7254.09	2662.58	-2663.69	544.42	40°08'40.625"N	104°46'26.691"W	0.22	
9788.00	89.500	181.920	7254.86	2752.52	-2753.62	541.02	40°08'39.736"N	104°46'26.734"W	0.53	
9878.00	89.320	181.970	7255.78	2842.47	-2843.57	537.97	40°08'38.848"N	104°46'26.774"W	0.21	
9968.00	90.150	182.750	7256.20	2932.40	-2933.49	534.26	40°08'37.959"N	104°46'26.821"W	1.27	
10058.00	89.930	182.180	7256.14	3022.33	-3023.41	530.39	40°08'37.070"N	104°46'26.871"W	0.68	
10148.00	89.590	181.570	7256.51	3112.28	-3113.36	527.45	40°08'36.182"N	104°46'26.909"W	0.78	
10238.00	89.630	180.020	7257.13	3202.27	-3203.34	526.20	40°08'35.292"N	104°46'26.925"W	1.72	
10328.00	89.690	179.340	7257.66	3292.27	-3293.34	526.70	40°08'34.403"N	104°46'26.919"W	0.76	
10418.00	89.410	179.620	7258.37	3382.26	-3383.33	527.52	40°08'33.514"N	104°46'26.908"W	0.44	
10508.00	89.320	179.250	7259.36	3472.25	-3473.32	528.41	40°08'32.624"N	104°46'26.897"W	0.42	
10598.00	88.770	178.210	7260.86	3562.20	-3563.29	530.40	40°08'31.735"N	104°46'26.871"W	1.31	
10688.00	89.250	178.360	7262.42	3652.15	-3653.23	533.09	40°08'30.846"N	104°46'26.837"W	0.56	
10778.00	90.400	178.060	7262.69	3742.09	-3743.19	535.90	40°08'29.958"N	104°46'26.801"W	1.32	
10868.00	89.590	176.950	7262.70	3832.00	-3833.10	539.82	40°08'29.069"N	104°46'26.750"W	1.53	
10959.00	89.290	177.560	7263.59	3922.88	-3923.99	544.18	40°08'28.171"N	104°46'26.694"W	0.75	
11049.00	89.040	177.740	7264.90	4012.79	-4013.90	547.87	40°08'27.282"N	104°46'26.647"W	0.34	
11139.00	90.090	177.030	7265.59	4102.68	-4103.81	551.98	40°08'26.394"N	104°46'26.594"W	1.41	
11230.00	91.020	179.310	7264.70	4193.62	-4194.75	554.88	40°08'25.495"N	104°46'26.556"W	2.71	
11320.00	91.100	180.180	7263.04	4283.60	-4284.73	555.28	40°08'24.606"N	104°46'26.551"W	0.97	
11410.00	91.230	181.040	7261.21	4373.58	-4374.71	554.32	40°08'23.717"N	104°46'26.564"W	0.97	
11499.00	89.690	181.510	7260.49	4462.55	-4463.68	552.34	40°08'22.838"N	104°46'26.589"W	1.81	
11589.00	90.180	180.740	7260.60	4552.54	-4553.66	550.58	40°08'21.948"N	104°46'26.612"W	1.01	
11679.00	90.030	181.110	7260.43	4642.53	-4643.65	549.12	40°08'21.059"N	104°46'26.631"W	0.44	
11859.00	90.210	181.600	7260.05	4822.48	-4823.60	544.87	40°08'19.281"N	104°46'26.685"W	0.29	
12039.00	91.360	182.440	7257.59	5002.36	-5003.46	538.52	40°08'17.503"N	104°46'26.767"W	0.79	
12129.00	90.460	181.290	7256.16	5092.31	-5093.40	535.60	40°08'16.615"N	104°46'26.805"W	1.62	
12219.00	90.610	180.260	7255.32	5182.30	-5183.39	534.38	40°08'15.725"N	104°46'26.821"W	1.16	
12309.00	89.500	180.310	7255.23	5272.29	-5273.39	533.93	40°08'14.836"N	104°46'26.826"W	1.23	
12399.00	90.090	180.030	7255.55	5362.29	-5363.38	533.66	40°08'13.947"N	104°46'26.830"W	0.73	
12489.00	90.340	179.730	7255.22	5452.29	-5453.38	533.85	40°08'13.057"N	104°46'26.827"W	0.43	
12579.00	90.460	179.960	7254.59	5542.29	-5543.38	534.10	40°08'12.168"N	104°46'26.824"W	0.29	

REFERENCE WELLPATH IDENTIFICATION			
Operator	KERR-MCGEE OIL & GAS ONSHORE LP	Slot	SLOT#07 AGGREGATE STATE 16N-16HZ (2389'FSL & 910'FEL, SEC.09)
Area	COLORADO	Well	AGGREGATE STATE 16N-16HZ
Field	WELD COUNTY (KERR MCGEE)	Wellbore	AGGREGATE STATE 16N-16HZ AWB
Facility	SEC.09-T2N-R66W		

WELLPATH DATA (159 stations)										
MD [ft]	Inclination [°]	Azimuth [°]	TVD [ft]	Vert Sect [ft]	North [ft]	East [ft]	Latitude	Longitude	DLS [°/100ft]	Comments
12669.00	90.710	179.680	7253.67	5632.28	-5633.38	534.38	40°08'11.279"N	104°46'26.821"W	0.42	
12760.00	90.180	180.850	7252.96	5723.28	-5724.37	533.96	40°08'10.379"N	104°46'26.826"W	1.41	
12849.00	89.040	182.140	7253.57	5812.25	-5813.33	531.64	40°08'09.500"N	104°46'26.856"W	1.93	
12940.00	88.540	182.010	7255.49	5903.17	-5904.25	528.34	40°08'08.602"N	104°46'26.899"W	0.57	
13029.00	90.610	183.750	7256.15	5992.06	-5993.13	523.87	40°08'07.723"N	104°46'26.956"W	3.04	
13119.00	88.670	182.390	7256.72	6081.93	-6082.99	519.05	40°08'06.835"N	104°46'27.018"W	2.63	
13210.00	89.070	181.220	7258.51	6172.87	-6173.93	516.18	40°08'05.937"N	104°46'27.055"W	1.36	
13299.00	88.240	180.010	7260.60	6261.84	-6262.90	515.23	40°08'05.058"N	104°46'27.067"W	1.65	
13389.00	89.040	180.320	7262.74	6351.81	-6352.87	514.97	40°08'04.168"N	104°46'27.071"W	0.95	
13479.00	89.130	180.690	7264.17	6441.80	-6442.86	514.18	40°08'03.279"N	104°46'27.081"W	0.42	
13569.00	90.300	181.910	7264.62	6531.78	-6532.83	512.14	40°08'02.390"N	104°46'27.107"W	1.88	
13659.00	89.500	179.760	7264.78	6621.76	-6622.81	510.82	40°08'01.501"N	104°46'27.124"W	2.55	
13749.00	89.810	180.580	7265.32	6711.76	-6712.81	510.56	40°08'00.611"N	104°46'27.128"W	0.97	
13839.00	89.650	178.960	7265.74	6801.76	-6802.80	510.92	40°07'59.722"N	104°46'27.123"W	1.81	
13929.00	90.770	180.800	7265.41	6891.75	-6892.80	511.11	40°07'58.833"N	104°46'27.121"W	2.39	
14019.00	90.490	179.150	7264.42	6981.74	-6982.79	511.15	40°07'57.943"N	104°46'27.120"W	1.86	
14109.00	88.880	179.510	7264.92	7071.73	-7072.78	512.20	40°07'57.054"N	104°46'27.107"W	1.83	
14199.00	87.870	180.040	7267.47	7161.69	-7162.74	512.55	40°07'56.165"N	104°46'27.102"W	1.27	
14289.00	87.840	179.650	7270.84	7251.62	-7252.68	512.80	40°07'55.276"N	104°46'27.099"W	0.43	
14379.00	87.870	180.170	7274.21	7341.56	-7342.61	512.94	40°07'54.388"N	104°46'27.097"W	0.58	
14469.00	88.300	179.340	7277.22	7431.51	-7432.56	513.32	40°07'53.499"N	104°46'27.092"W	1.04	
14559.00	88.880	180.360	7279.43	7521.48	-7522.53	513.56	40°07'52.610"N	104°46'27.089"W	1.30	
14643.00	89.040	179.910	7280.96	7605.46	-7606.52	513.36	40°07'51.780"N	104°46'27.092"W	0.57	Last BHI MWD+IFR Surveys
14698.00	89.040	179.910	7281.88	7660.46	-7661.51	513.45	40°07'51.236"N	104°46'27.091"W	0.00	Projection to Bit

HOLE & CASING SECTIONS - Ref Wellbore: AGGREGATE STATE 16N-16HZ AWB Ref Wellpath: AGGREGATE STATE 16N-16HZ AWP									
String/Diameter	Start MD [ft]	End MD [ft]	Interval [ft]	Start TVD [ft]	End TVD [ft]	Start N/S [ft]	Start E/W [ft]	End N/S [ft]	End E/W [ft]
13.5in Open Hole	13.00	1025.00	1012.00	13.00	1024.98	0.00	0.00	2.16	0.65
9.625in Casing Surface	13.00	1015.00	1002.00	13.00	1014.98	0.00	0.00	2.13	0.66
8.75in Open Hole	1025.00	7716.00	6691.00	1024.98	7255.02	2.16	0.65	-682.42	540.24
7in Casing Intermediate	13.00	7702.00	7689.00	13.00	7255.11	0.00	0.00	-668.44	539.50
6.125in Open Hole	7716.00	14698.00	6982.00	7255.02	7281.88	-682.42	540.24	-7661.51	513.45

REFERENCE WELLPATH IDENTIFICATION			
Operator	KERR-MCGEE OIL & GAS ONSHORE LP	Slot	SLOT#07 AGGREGATE STATE 16N-16HZ (2389'FSL & 910'FEL, SEC.09)
Area	COLORADO	Well	AGGREGATE STATE 16N-16HZ
Field	WELD COUNTY (KERR MCGEE)	Wellbore	AGGREGATE STATE 16N-16HZ AWB
Facility	SEC.09-T2N-R66W		

TARGETS									
Name	MD [ft]	TVD [ft]	North [ft]	East [ft]	Grid East [US ft]	Grid North [US ft]	Latitude	Longitude	Shape
SEC.09-T2N-R66W SECTION LINES		10.00	-2.42	-2296.12	3200073.31	1298996.37	40°09'06.923"N	104°47'03.271"W	polygon
SEC.16-T2N-R66W SECTION LINES		10.00	-2.42	-2296.12	3200073.31	1298996.37	40°09'06.923"N	104°47'03.271"W	polygon
AGGREGATE STATE 16N-16HZ BHL (1'FSL & 385'FEL, SEC.16) REV-2		7257.00	-7661.50	511.01	3202942.76	1291360.80	40°07'51.236"N	104°46'27.122"W	point
AGGREGATE STATE 16N-16HZ BHL ON PLAT (1'FSL & 410'FEL, SEC.16) REV-1		7257.00	-7661.54	486.01	3202917.76	1291360.56	40°07'51.236"N	104°46'27.444"W	point
AGGREGATE STATE 16N-16HZ LAND BOX		7257.00	0.00	0.00	3202369.24	1299017.54	40°09'06.948"N	104°46'33.701"W	polygon

WELLPATH COMPOSITION - Ref Wellbore: AGGREGATE STATE 16N-16HZ AWB					Ref Wellpath: AGGREGATE STATE 16N-16HZ AWP	
Start MD [ft]	End MD [ft]	Positional Uncertainty Model	Log Name/Comment		Wellbore	
13.00	903.00	Generic gyro - continuous (Standard)	MS ENERGY SERVICES GYRO SURVEYS <113-903>		AGGREGATE STATE 16N-16HZ AWB	
903.00	7658.00	NaviTrak (MAGCORR,IFR)	BHI MWD+IFR SURVEYS 8 3/4" HOLE <1075-7658>		AGGREGATE STATE 16N-16HZ AWB	
7658.00	14643.00	NaviTrak (MAGCORR,IFR)	BHI MWD+IFR SURVEYS 6 1/8" HOLE <7733-14199>		AGGREGATE STATE 16N-16HZ AWB	
14643.00	14698.00	Blind Drilling (std)	Projection to bit		AGGREGATE STATE 16N-16HZ AWB	



REFERENCE WELLPATH IDENTIFICATION			
Operator	KERR-MCGEE OIL & GAS ONSHORE LP	Slot	SLOT#07 AGGREGATE STATE 16N-16HZ (2389'FSL & 910'FEL, SEC.09)
Area	COLORADO	Well	AGGREGATE STATE 16N-16HZ
Field	WELD COUNTY (KERR MCGEE)	Wellbore	AGGREGATE STATE 16N-16HZ AWB
Facility	SEC.09-T2N-R66W		

WELLPATH COMMENTS				
MD [ft]	Inclination [°]	Azimuth [°]	TVD [ft]	Comment
13.00	0.000	143.520	13.00	Tie-On
113.00	0.310	143.520	113.00	Begin GYRO Surveys
903.00	0.290	74.300	902.98	Tie-Into GYRO Surveys
1075.00	0.260	320.310	1074.98	Begin BHI MWD+IFR Surveys
7702.00	90.260	177.001	7255.11	7" Casing Point
14643.00	89.040	179.910	7280.96	Last BHI MWD+IFR Surveys
14698.00	89.040	179.910	7281.88	Projection to Bit