



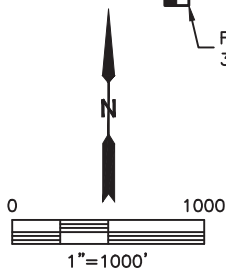
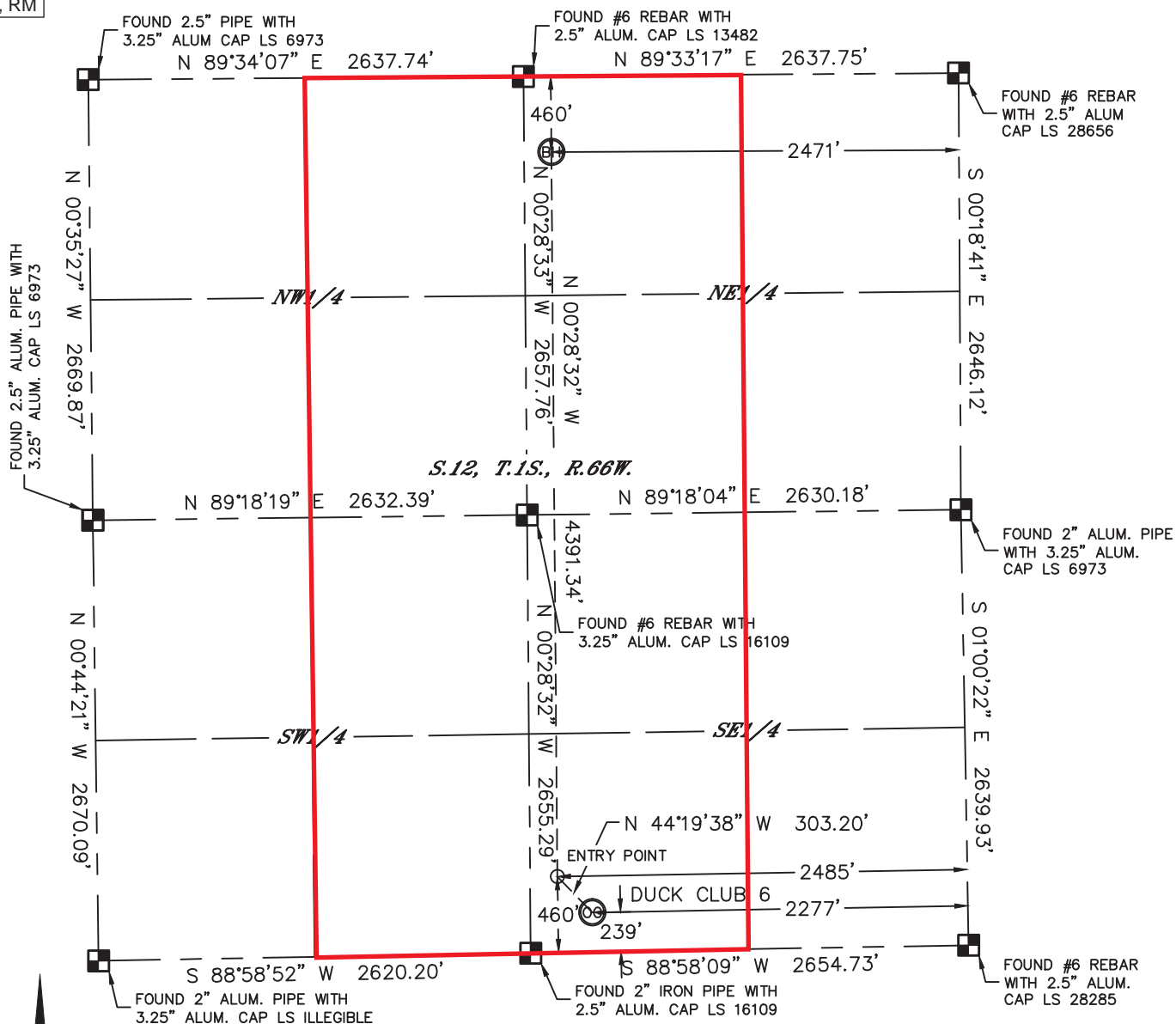
Lat40°, Inc. 1635 Foxtrail Drive, Suite 325 Loveland, CO 970-776-3321

## PROPOSED SPACING UNIT

SECTION: 12  
TOWNSHIP: 1S  
RANGE: 66W

Edited by IPT  
04/18/14, RM

THIS MAP DOES NOT REPRESENT A BOUNDARY SURVEY



In accordance with a request from Derek Petrie with EXTRACTION OIL & GAS Lat40°, Inc. has determined the surface location of the DUCK CLUB 6 to be 239' from the SOUTH line and 2277' from the EAST line and the bottom hole to be 460' from the NORTH line and 2471' from the EAST line as measured at right angles from the section lines of Section 12, Township 1 South, Range 66 West of the Sixth Principal Meridian, County of Adams, State of Colorado.

I hereby state that this Well Location Certificate was prepared by me, or under my direct supervision, that the fieldwork was completed on 4/2/2014, for and on behalf of EXTRACTION OIL & GAS. That this is not a Land Survey Plat or an Improvement Survey Plat, and that it is not to be relied upon for establishment of fence, building, or other future improvement lines.

### NOTE:

- 1) Bearings shown are Grid Bearings of the Colorado State Plane Coordinate System, North Zone, North American Datum 1983/2007. The lineal dimensions as contained herein are based upon the "U.S. Survey Foot."
- 2) Ground elevations are based on an observed GPS elevation (NAVD 1988 DATUM).
- 3) IMPROVEMENTS: See LOCATION DRAWING for all visible improvements within 500' of disturbed area.
- 4) SURFACE USE: RECREATIONAL
- 5) INSTRUMENT OPERATOR: BRIAN ROTTINGHAUS
- 6) NEAREST CULTURAL ITEMS:  
BUILDING: 390' NW (DILAPIDATED)  
BUILDING UNIT: 1005' NE  
HIGH OCCUPANCY BUILDING UNIT: 5280'+  
DESIGNATED OUTSIDE ACTIVITY AREA: 5280'+  
PUBLIC ROAD: 225' S (E. 152ND AVE.)  
ABOVEGROUND UTILITY: 266' S  
RAILROAD: ±4103' NW  
PROPERTY LINE: 239' S

### SURFACE LOCATION

LAT: 39.97302°N  
LONG: 104.72269°W  
PDOP: 1.3  
ELEV: 5035'  
1/4, 1/4: SWSE

### ENTRY POINT

LAT: 39.97362°N  
LONG: 104.72344°W

### BOTTOM HOLE

LAT: 39.98567°N  
LONG: 104.72343°W

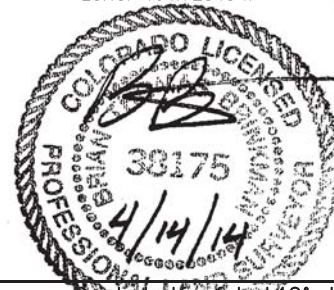
### LEGEND

- = ALIQUOT MONUMENT AS DESCRIBED  
○ = CALCULATED POSITION

Brian T. Brinkman—On Behalf of Lat40°, Inc.

Colorado Licensed Professional  
Land Surveyor No. 38175

DATE: 4/14/2014  
PROJECT#: 2014048





05/23/2014

VIA ELECTRONIC TRANSMITTAL

Colorado Oil and Gas Conservation Commission  
Attn: Matt Lepore, Director  
1120 Lincoln Street, Suite 801  
Denver, CO 80203

RE: Rule 318A.e 30-Day Certification Letter

Duck Club 1 Well: 240' FSL, 2407' FEL, Section 12, T1S-R66W, Adams County, Colorado  
Duck Club 2 Well: 240' FSL, 2381' FEL, Section 12, T1S-R66W, Adams County, Colorado  
Duck Club 3 Well: 240' FSL, 2355' FEL, Section 12, T1S-R66W, Adams County, Colorado  
Duck Club 4 Well: 240' FSL, 2329' FEL, Section 12, T1S-R66W, Adams County, Colorado  
Duck Club 5 Well: 239' FSL, 2303' FEL, Section 12, T1S-R66W, Adams County, Colorado  
Duck Club 6 Well: 239' FSL, 2277' FEL, Section 12, T1S-R66W, Adams County, Colorado  
Duck Club 7 Well: 239' FSL, 2251' FEL, Section 12, T1S-R66W, Adams County, Colorado  
Duck Club 8 Well: 239' FSL, 2225' FEL, Section 12, T1S-R66W, Adams County, Colorado  
Duck Club 9 Well: 239' FSL, 2199' FEL, Section 12, T1S-R66W, Adams County, Colorado

Dear Mr. Lepore,

Extraction Oil & Gas LLC (EXT) hereby certifies that thirty (30) day notice has been given to all owners in the proposed wellbore spacing unit in accordance with Rule 318A.e(6). The notices were sent on 4/22/14. EXT has received no objections to the subject well locations, proposed spacing units, or additional producing information from any owner as described in C.R.S. §34-60-103(7). The thirty (30) day objection period has expired. EXT respectfully requests that the Director approve the wells. Should you have any questions or concerns please contact the undersigned at 720-420-5700.

Sincerely,

Ruben Markarian  
Engineer  
Integrated Petroleum Technologies, Inc.  
Consultants to Extraction Oil & Gas, LLC