

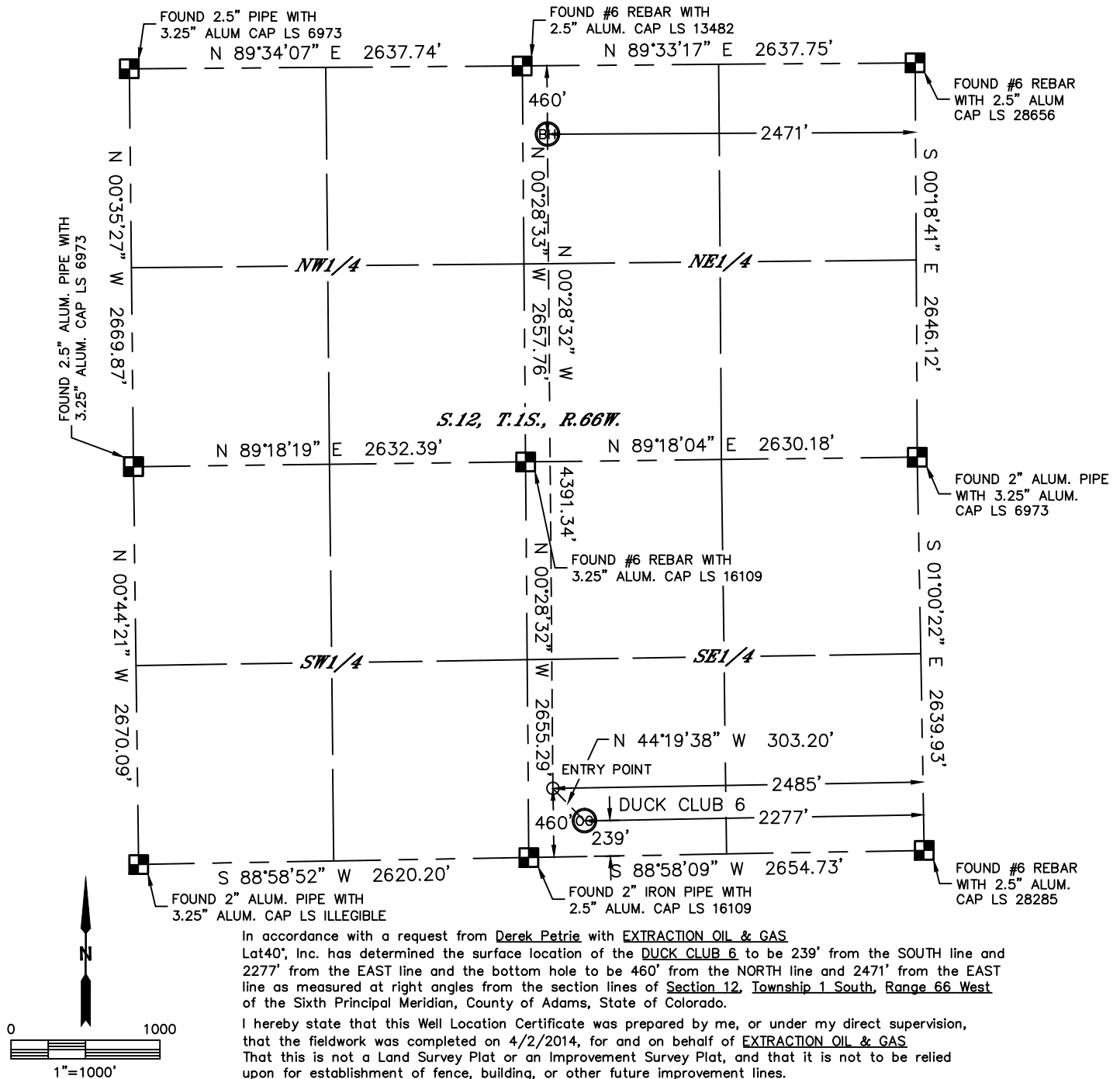


Lat40°, Inc. 1635 Foxtrail Drive, Suite 325 Loveland, CO 970-776-3321

WELL LOCATION CERTIFICATE

THIS MAP DOES NOT REPRESENT A BOUNDARY SURVEY

SECTION: 12
TOWNSHIP: 1S
RANGE: 66W



In accordance with a request from Derek Petrie with EXTRACTION OIL & GAS Lat40°, Inc. has determined the surface location of the DUCK CLUB 6 to be 239' from the SOUTH line and 2277' from the EAST line and the bottom hole to be 460' from the NORTH line and 2471' from the EAST line as measured at right angles from the section lines of Section 12, Township 1 South, Range 66 West of the Sixth Principal Meridian, County of Adams, State of Colorado.

I hereby state that this Well Location Certificate was prepared by me, or under my direct supervision, that the fieldwork was completed on 4/2/2014, for and on behalf of EXTRACTION OIL & GAS. That this is not a Land Survey Plat or an Improvement Survey Plat, and that it is not to be relied upon for establishment of fence, building, or other future improvement lines.

SURFACE LOCATION

LAT: 39.97302°N
LONG: 104.72269°W
PDOP: 1.3
ELEV: 5035'
1/4,1/4: SWSE

BOTTOM HOLE

LAT: 39.98567°N
LONG: 104.72343°W

ENTRY POINT

LAT: 39.97362°N
LONG: 104.72344°W

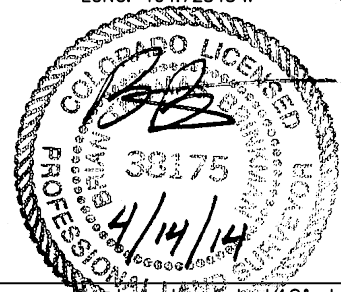
LEGEND

- = ALIQUOT MONUMENT AS DESCRIBED
- = CALCULATED POSITION

Brian T. Brinkman—On behalf of Lat40°, Inc.

Colorado Licensed Professional
Land Surveyor No. 38175

DATE: 4/14/2014
PROJECT#: 2014048



NOTE:

- 1) Bearings shown are Grid Bearings of the Colorado State Plane Coordinate System, North Zone, North American Datum 1983/2007. The lineal dimensions as contained herein are based upon the "U.S. Survey Foot."
- 2) Ground elevations are based on an observed GPS elevation (NAVD 1988 DATUM).
- 3) IMPROVEMENTS: See LOCATION DRAWING for all visible improvements within 500' of disturbed area.
- 4) SURFACE USE: RECREATIONAL
- 5) INSTRUMENT OPERATOR: BRIAN ROTTINGHAUS
- 6) NEAREST CULTURAL ITEMS:
BUILDING: 390' NW (DILAPIDATED)
BUILDING UNIT: 1005' NE
HIGH OCCUPANCY BUILDING UNIT: 5280'+
DESIGNATED OUTSIDE ACTIVITY AREA: 5280'+
PUBLIC ROAD: 225' S (E. 152ND AVE.)
ABOVEGROUND UTILITY: 266' S
RAILROAD: ±4103' NW
PROPERTY LINE: 239' S

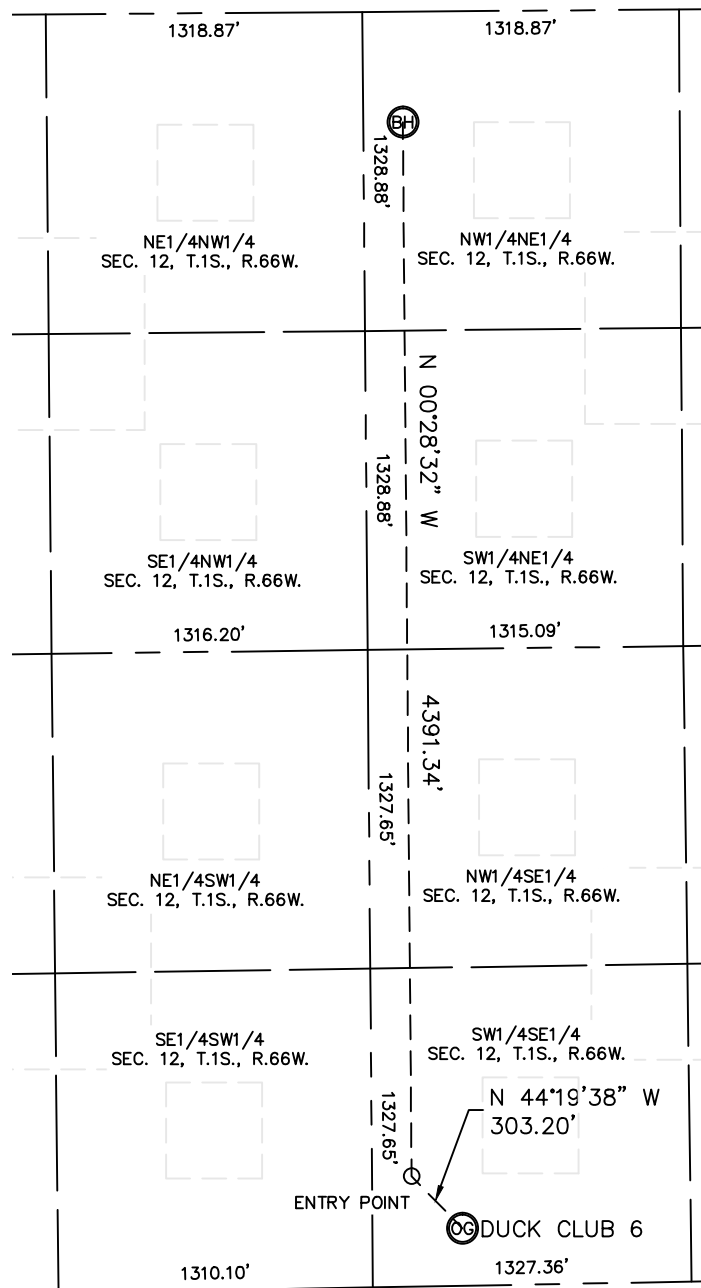


Lat40°, Inc. 1635 Foxtrail Drive, Suite 325 Loveland, CO 970-776-3321

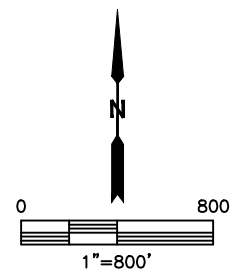
SITE SKETCH

DUCK CLUB 6

SECTION: 12
TOWNSHIP: 1S
RANGE: 66W



NOTE: NO EXISTING WELLS ADJACENT TO PROPOSED WELL BORE.



DATE: 4/9/2014
PROJECT#: 2014048