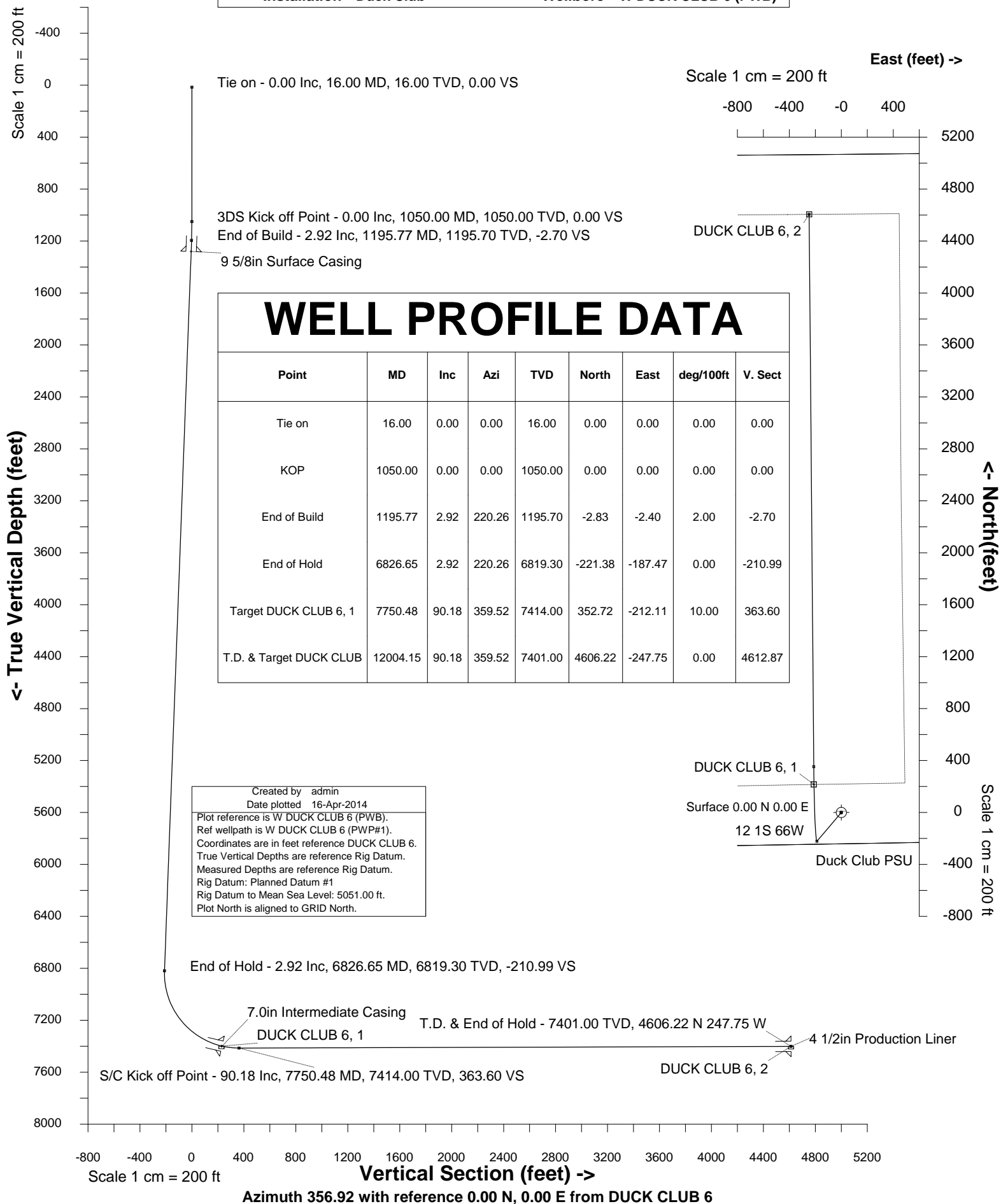


Location	Windsor	Slot	DUCK CLUB 6
Field	Wattenberg	Well	W DUCK CLUB 6
Installation	Duck Club	Wellbore	W DUCK CLUB 6 (PWB)





INTEGRATED PETROLEUM TECHNOLOGIES, INC
SYSDRILL
Well Design Combined Report
Wellbore: W DUCK CLUB 6 (PWB)

Wellhead Details

Name	Northing	Easting	Latitude	Longitude	North	East	Elevation Above Inst.
DUCK CLUB 6	1233973.5570	3217849.5494	39.97302000	-104.72269000	1.13N	128.92E	-2.00

Declination

Date	Source	Time
14-Apr-2014	IGRF Model [1900.0-2015.0]	15:20

Site Details

Name	Northing	Easting	Coord System Name	North Alignment
Duck Club	1233972.4272	3217720.6327	CO83-NF on NORTH AMERICAN DATUM 1983 datum	Grid

Summary Wellpath

MD[ft]	Inc[deg]	Azi[deg]	TVD[ft]	North[ft]	East[ft]	Dogleg [deg/100ft]	Vertical Section[ft]	Northing	Easting
16.00	0.00	0.000	16.00	0.00N	0.00E		0.00	1233973.56	3217849.55
1050.00	0.00	0.000	1050.00	0.00N	0.00E	==>	0.00	1233973.56	3217849.55
1195.77	2.92	220.260	1195.70	2.83S	2.40W	2.00	-2.70	1233970.73	3217847.15
6826.65	2.92	220.260	6819.30	221.38S	187.47W	==>	-210.99	1233752.19	3217662.08
7750.48	90.18	359.520	7414.00	352.72N	212.11W	10.00	363.60	1234326.27	3217637.45
12004.15	90.18	359.520	7401.00	4606.22N	247.75W	==>	4612.87	1238579.62	3217601.81

Interpolated Wellpath

MD[ft]	Inc[deg]	Azi[deg]	TVD[ft]	North[ft]	East[ft]	Dogleg [deg/100ft]	Vertical Section[ft]	Northing	Easting
0.00	0.00	0.000	0.00	0.00N	0.00E		0.00	1233973.56	3217849.55
16.00	0.00	0.000	16.00	0.00N	0.00E	==>	0.00	1233973.56	3217849.55
100.00	0.00	0.000	100.00	0.00N	0.00E	==>	0.00	1233973.56	3217849.55
200.00	0.00	0.000	200.00	0.00N	0.00E	==>	0.00	1233973.56	3217849.55
300.00	0.00	0.000	300.00	0.00N	0.00E	==>	0.00	1233973.56	3217849.55
400.00	0.00	0.000	400.00	0.00N	0.00E	==>	0.00	1233973.56	3217849.55
500.00	0.00	0.000	500.00	0.00N	0.00E	==>	0.00	1233973.56	3217849.55
600.00	0.00	0.000	600.00	0.00N	0.00E	==>	0.00	1233973.56	3217849.55
700.00	0.00	0.000	700.00	0.00N	0.00E	==>	0.00	1233973.56	3217849.55
800.00	0.00	0.000	800.00	0.00N	0.00E	==>	0.00	1233973.56	3217849.55
900.00	0.00	0.000	900.00	0.00N	0.00E	==>	0.00	1233973.56	3217849.55
1000.00	0.00	0.000	1000.00	0.00N	0.00E	==>	0.00	1233973.56	3217849.55
1034.00	0.00	0.000	1034.00	0.00N	0.00E	==>	0.00	1233973.56	3217849.55
1050.00	0.00	0.000	1050.00	0.00N	0.00E	==>	0.00	1233973.56	3217849.55
1134.00	1.68	220.260	1133.99	0.94S	0.80W	2.00	-0.90	1233972.62	3217848.75
1195.77	2.92	220.260	1195.70	2.83S	2.40W	2.00	-2.70	1233970.73	3217847.15
1200.00	2.92	220.260	1199.93	2.99S	2.54W	==>	-2.85	1233970.56	3217847.01
1300.00	2.92	220.260	1299.80	6.87S	5.82W	==>	-6.55	1233966.68	3217843.73
1400.00	2.92	220.260	1399.67	10.76S	9.11W	==>	-10.25	1233962.80	3217840.44
1500.00	2.92	220.260	1499.54	14.64S	12.40W	==>	-13.95	1233958.92	3217837.15
1600.00	2.92	220.260	1599.41	18.52S	15.68W	==>	-17.65	1233955.04	3217833.87
1700.00	2.92	220.260	1699.28	22.40S	18.97W	==>	-21.35	1233951.16	3217830.58
1800.00	2.92	220.260	1799.16	26.28S	22.26W	==>	-25.05	1233947.28	3217827.29
1900.00	2.92	220.260	1899.03	30.16S	25.54W	==>	-28.75	1233943.40	3217824.01
2000.00	2.92	220.260	1998.90	34.04S	28.83W	==>	-32.45	1233939.51	3217820.72
2100.00	2.92	220.260	2098.77	37.92S	32.12W	==>	-36.14	1233935.63	3217817.43
2200.00	2.92	220.260	2198.64	41.81S	35.40W	==>	-39.84	1233931.75	3217814.15
2300.00	2.92	220.260	2298.51	45.69S	38.69W	==>	-43.54	1233927.87	3217810.86
2400.00	2.92	220.260	2398.38	49.57S	41.98W	==>	-47.24	1233923.99	3217807.57
2500.00	2.92	220.260	2498.25	53.45S	45.26W	==>	-50.94	1233920.11	3217804.29
2600.00	2.92	220.260	2598.12	57.33S	48.55W	==>	-54.64	1233916.23	3217801.00
2700.00	2.92	220.260	2697.99	61.21S	51.84W	==>	-58.34	1233912.35	3217797.71
2800.00	2.92	220.260	2797.86	65.09S	55.12W	==>	-62.04	1233908.47	3217794.43
2900.00	2.92	220.260	2897.73	68.97S	58.41W	==>	-65.74	1233904.59	3217791.14
3000.00	2.92	220.260	2997.60	72.86S	61.70W	==>	-69.44	1233900.70	3217787.85
3100.00	2.92	220.260	3097.47	76.74S	64.99W	==>	-73.14	1233896.82	3217784.57
3200.00	2.92	220.260	3197.34	80.62S	68.27W	==>	-76.83	1233892.94	3217781.28
3300.00	2.92	220.260	3297.21	84.50S	71.56W	==>	-80.53	1233889.06	3217777.99

All data is in Feet unless otherwise stated
Coordinates are from Slot MD's are from Rig and TVD's are from Rig (Planned Datum #1 5051.0ft above Mean Sea Level)
Vertical Section is from 0.00N 0.00E on azimuth 356.920 degrees
Bottom hole distance is 4612.87 Feet on azimuth 356.92 degrees from Wellhead
Calculation method uses Minimum Curvature method
Prepared by Integrated Petroleum Technologies, Inc.
Date Printed: 16-Apr-2014



INTEGRATED PETROLEUM TECHNOLOGIES, INC
SYSDRILL

Well Design Combined Report
Wellbore: W DUCK CLUB 6 (PWB)

Interpolated Wellpath									
MD[ft]	Inc[deg]	Azi[deg]	TVD[ft]	North[ft]	East[ft]	Dogleg [deg/100ft]	Vertical Section[ft]	Northing	Easting
3400.00	2.92	220.260	3397.08	88.38S	74.85W	==>	-84.23	1233885.18	3217774.71
3500.00	2.92	220.260	3496.95	92.26S	78.13W	==>	-87.93	1233881.30	3217771.42
3600.00	2.92	220.260	3596.83	96.14S	81.42W	==>	-91.63	1233877.42	3217768.13
3700.00	2.92	220.260	3696.70	100.02S	84.71W	==>	-95.33	1233873.54	3217764.85
3800.00	2.92	220.260	3796.57	103.90S	87.99W	==>	-99.03	1233869.66	3217761.56
3900.00	2.92	220.260	3896.44	107.79S	91.28W	==>	-102.73	1233865.77	3217758.27
4000.00	2.92	220.260	3996.31	111.67S	94.57W	==>	-106.43	1233861.89	3217754.99
4100.00	2.92	220.260	4096.18	115.55S	97.85W	==>	-110.13	1233858.01	3217751.70
4200.00	2.92	220.260	4196.05	119.43S	101.14W	==>	-113.83	1233854.13	3217748.41
4300.00	2.92	220.260	4295.92	123.31S	104.43W	==>	-117.52	1233850.25	3217745.13
4400.00	2.92	220.260	4395.79	127.19S	107.71W	==>	-121.22	1233846.37	3217741.84
4500.00	2.92	220.260	4495.66	131.07S	111.00W	==>	-124.92	1233842.49	3217738.55
4600.00	2.92	220.260	4595.53	134.95S	114.29W	==>	-128.62	1233838.61	3217735.27
4700.00	2.92	220.260	4695.40	138.84S	117.57W	==>	-132.32	1233834.73	3217731.98
4800.00	2.92	220.260	4795.27	142.72S	120.86W	==>	-136.02	1233830.84	3217728.69
4900.00	2.92	220.260	4895.14	146.60S	124.15W	==>	-139.72	1233826.96	3217725.40
5000.00	2.92	220.260	4995.01	150.48S	127.44W	==>	-143.42	1233823.08	3217722.12
5100.00	2.92	220.260	5094.88	154.36S	130.72W	==>	-147.12	1233819.20	3217718.83
5200.00	2.92	220.260	5194.75	158.24S	134.01W	==>	-150.82	1233815.32	3217715.54
5300.00	2.92	220.260	5294.63	162.12S	137.30W	==>	-154.52	1233811.44	3217712.26
5400.00	2.92	220.260	5394.50	166.00S	140.58W	==>	-158.21	1233807.56	3217708.97
5500.00	2.92	220.260	5494.37	169.89S	143.87W	==>	-161.91	1233803.68	3217705.68
5600.00	2.92	220.260	5594.24	173.77S	147.16W	==>	-165.61	1233799.80	3217702.40
5700.00	2.92	220.260	5694.11	177.65S	150.44W	==>	-169.31	1233795.92	3217699.11
5800.00	2.92	220.260	5793.98	181.53S	153.73W	==>	-173.01	1233792.03	3217695.82
5900.00	2.92	220.260	5893.85	185.41S	157.02W	==>	-176.71	1233788.15	3217692.54
6000.00	2.92	220.260	5993.72	189.29S	160.30W	==>	-180.41	1233784.27	3217689.25
6100.00	2.92	220.260	6093.59	193.17S	163.59W	==>	-184.11	1233780.39	3217685.96
6200.00	2.92	220.260	6193.46	197.05S	166.88W	==>	-187.81	1233776.51	3217682.68
6300.00	2.92	220.260	6293.33	200.94S	170.16W	==>	-191.51	1233772.63	3217679.39
6400.00	2.92	220.260	6393.20	204.82S	173.45W	==>	-195.20	1233768.75	3217676.10
6500.00	2.92	220.260	6493.07	208.70S	176.74W	==>	-198.90	1233764.87	3217672.82
6600.00	2.92	220.260	6592.94	212.58S	180.02W	==>	-202.60	1233760.99	3217669.53
6700.00	2.92	220.260	6692.81	216.46S	183.31W	==>	-206.30	1233757.10	3217666.24
6800.00	2.92	220.260	6792.68	220.34S	186.60W	==>	-210.00	1233753.22	3217662.96
6826.65	2.92	220.260	6819.30	221.38S	187.47W	==>	-210.99	1233752.19	3217662.08
6900.00	5.47	339.200	6892.54	219.53S	189.92W	10.00	-209.01	1233754.04	3217659.63
7000.00	15.24	352.510	6990.80	202.00S	193.34W	10.00	-191.32	1233771.57	3217656.22
7100.00	25.19	355.460	7084.52	167.66S	196.75W	10.00	-156.85	1233805.91	3217652.81
7200.00	35.17	356.810	7170.85	117.56S	200.04W	10.00	-106.64	1233856.01	3217649.52
7300.00	45.16	357.620	7247.18	53.21S	203.12W	10.00	-42.23	1233920.35	3217646.43
7400.00	55.15	358.190	7311.17	23.42N	205.90W	10.00	34.44	1233996.97	3217643.66
7500.00	65.14	358.630	7360.89	110.00N	208.29W	10.00	121.03	1234083.56	3217641.27
7600.00	75.14	359.010	7394.82	203.92N	210.21W	10.00	214.91	1234177.47	3217639.34
7700.00	85.13	359.350	7411.93	302.30N	211.62W	10.00	313.23	1234275.85	3217637.94
7750.48	90.18	359.520	7414.00	352.72N	212.11W	10.00	363.60	1234326.27	3217637.45
7800.00	90.18	359.520	7413.85	402.24N	212.53W	==>	413.07	1234375.78	3217637.03
7900.00	90.18	359.520	7413.54	502.23N	213.36W	==>	512.97	1234475.77	3217636.19
8000.00	90.18	359.520	7413.24	602.23N	214.20W	==>	612.86	1234575.77	3217635.35
8100.00	90.18	359.520	7412.93	702.23N	215.04W	==>	712.76	1234675.76	3217634.52
8200.00	90.18	359.520	7412.63	802.22N	215.88W	==>	812.66	1234775.75	3217633.68
8300.00	90.18	359.520	7412.32	902.22N	216.72W	==>	912.56	1234875.74	3217632.84
8400.00	90.18	359.520	7412.01	1002.21N	217.55W	==>	1012.45	1234975.74	3217632.00
8500.00	90.18	359.520	7411.71	1102.21N	218.39W	==>	1112.35	1235075.73	3217631.17
8600.00	90.18	359.520	7411.40	1202.21N	219.23W	==>	1212.25	1235175.72	3217630.33
8700.00	90.18	359.520	7411.10	1302.20N	220.07W	==>	1312.14	1235275.72	3217629.49
8800.00	90.18	359.520	7410.79	1402.20N	220.90W	==>	1412.04	1235375.71	3217628.65
8900.00	90.18	359.520	7410.49	1502.19N	221.74W	==>	1511.94	1235475.70	3217627.81
9000.00	90.18	359.520	7410.18	1602.19N	222.58W	==>	1611.83	1235575.69	3217626.98
9100.00	90.18	359.520	7409.88	1702.19N	223.42W	==>	1711.73	1235675.69	3217626.14
9200.00	90.18	359.520	7409.57	1802.18N	224.26W	==>	1811.63	1235775.68	3217625.30

All data is in Feet unless otherwise stated
Coordinates are from Slot MD's are from Rig and TVD's are from Rig (Planned Datum #1 5051.0ft above Mean Sea Level)
Vertical Section is from 0.00N 0.00E on azimuth 356.920 degrees
Bottom hole distance is 4612.87 Feet on azimuth 356.92 degrees from Wellhead
Calculation method uses Minimum Curvature method
Prepared by Integrated Petroleum Technologies, Inc.
Date Printed: 16-Apr-2014



INTEGRATED PETROLEUM TECHNOLOGIES, INC
SYSDRILL
Well Design Combined Report
Wellbore: W DUCK CLUB 6 (PWB)

Interpolated Wellpath									
MD[ft]	Inc[deg]	Azi[deg]	TVD[ft]	North[ft]	East[ft]	Dogleg [deg/100ft]	Vertical Section[ft]	Northing	Easting
9300.00	90.18	359.520	7409.26	1902.18N	225.09W	==>	1911.52	1235875.67	3217624.46
9400.00	90.18	359.520	7408.96	2002.17N	225.93W	==>	2011.42	1235975.66	3217623.63
9500.00	90.18	359.520	7408.65	2102.17N	226.77W	==>	2111.32	1236075.66	3217622.79
9600.00	90.18	359.520	7408.35	2202.17N	227.61W	==>	2211.21	1236175.65	3217621.95
9700.00	90.18	359.520	7408.04	2302.16N	228.45W	==>	2311.11	1236275.64	3217621.11
9800.00	90.18	359.520	7407.74	2402.16N	229.28W	==>	2411.01	1236375.63	3217620.27
9900.00	90.18	359.520	7407.43	2502.15N	230.12W	==>	2510.90	1236475.63	3217619.44
10000.00	90.18	359.520	7407.13	2602.15N	230.96W	==>	2610.80	1236575.62	3217618.60
10100.00	90.18	359.520	7406.82	2702.15N	231.80W	==>	2710.70	1236675.61	3217617.76
10200.00	90.18	359.520	7406.51	2802.14N	232.63W	==>	2810.59	1236775.61	3217616.92
10300.00	90.18	359.520	7406.21	2902.14N	233.47W	==>	2910.49	1236875.60	3217616.08
10400.00	90.18	359.520	7405.90	3002.13N	234.31W	==>	3010.39	1236975.59	3217615.25
10500.00	90.18	359.520	7405.60	3102.13N	235.15W	==>	3110.28	1237075.58	3217614.41
10600.00	90.18	359.520	7405.29	3202.13N	235.99W	==>	3210.18	1237175.58	3217613.57
10700.00	90.18	359.520	7404.99	3302.12N	236.82W	==>	3310.08	1237275.57	3217612.73
10800.00	90.18	359.520	7404.68	3402.12N	237.66W	==>	3409.97	1237375.56	3217611.90
10900.00	90.18	359.520	7404.37	3502.11N	238.50W	==>	3509.87	1237475.55	3217611.06
11000.00	90.18	359.520	7404.07	3602.11N	239.34W	==>	3609.77	1237575.55	3217610.22
11100.00	90.18	359.520	7403.76	3702.11N	240.18W	==>	3709.66	1237675.54	3217609.38
11200.00	90.18	359.520	7403.46	3802.10N	241.01W	==>	3809.56	1237775.53	3217608.54
11300.00	90.18	359.520	7403.15	3902.10N	241.85W	==>	3909.46	1237875.52	3217607.71
11400.00	90.18	359.520	7402.85	4002.09N	242.69W	==>	4009.35	1237975.52	3217606.87
11500.00	90.18	359.520	7402.54	4102.09N	243.53W	==>	4109.25	1238075.51	3217606.03
11600.00	90.18	359.520	7402.24	4202.09N	244.36W	==>	4209.15	1238175.50	3217605.19
11700.00	90.18	359.520	7401.93	4302.08N	245.20W	==>	4309.04	1238275.50	3217604.36
11800.00	90.18	359.520	7401.62	4402.08N	246.04W	==>	4408.94	1238375.49	3217603.52
11900.00	90.18	359.520	7401.32	4502.07N	246.88W	==>	4508.84	1238475.48	3217602.68
12000.00	90.18	359.520	7401.01	4602.07N	247.72W	==>	4608.73	1238575.47	3217601.84
12004.15	90.18	359.520	7401.00	4606.22N	247.75W	==>	4612.87	1238579.62	3217601.81

All data is in Feet unless otherwise stated
Coordinates are from Slot MD's are from Rig and TVD's are from Rig (Planned Datum #1 5051.0ft above Mean Sea Level)
Vertical Section is from 0.00N 0.00E on azimuth 356.920 degrees
Bottom hole distance is 4612.87 Feet on azimuth 356.92 degrees from Wellhead
Calculation method uses Minimum Curvature method
Prepared by Integrated Petroleum Technologies, Inc.
Date Printed: 16-Apr-2014



INTEGRATED PETROLEUM TECHNOLOGIES, INC
SYSDRILL
Well Design Combined Report
Wellbore: W DUCK CLUB 6 (PWB)

Hole Sections								
Diameter [in]	Start MD[ft]	Start TVD[ft]	Start North[ft]	Start East[ft]	End MD[ft]	End TVD[ft]	End North[ft]	End East[ft]
13 1/2	16.00	16.00	0.00N	0.00E	1280.17	1280.00	6.11S	5.17W
8 3/4	1280.17	1280.00	6.11S	5.17W	7617.29	7399.00	220.68N	210.49W
6 1/8	7617.29	7399.00	220.68N	210.49W	12004.15	7401.00	4606.22N	247.75W

Casings								
Name	Top MD[ft]	Top TVD[ft]	Top North[ft]	Top East[ft]	Shoe MD[ft]	Shoe TVD[ft]	Shoe North[ft]	Shoe East[ft]
9 5/8in Surface Casing	16.00	16.00	0.00N	0.00E	1280.17	1280.00	6.11S	5.17W
7.0in Intermediate Casing	16.00	16.00	0.00N	0.00E	7617.29	7399.00	220.68N	210.49W
4 1/2in Production Liner	7467.00	7346.16	80.48N	207.55W	12004.15	7401.00	4606.22N	247.75W

Targets								
Name	North[ft]	East[ft]	TVD[ft]	Latitude	Longitude	Northing	Easting	Last Revised
DUCK CLUB 6, 1	216.72N	212.11W	7399.00	39.97362000	-104.72344000	1234190.27	3217637.45	15-Apr-2014
DUCK CLUB 6, 2	4606.22N	247.75W	7401.00	39.98567000	-104.72343000	1238579.62	3217601.81	15-Apr-2014

Survey Tool Program								
Reference	Survey Name	MD[ft]	TVD[ft]	Survey Tool	Error Model			
183495	Planned	12004.15	7401.00	ISCWSA MWD	Rev 3 + Fixed Rig + Rotating			

Notes

All data is in Feet unless otherwise stated
Coordinates are from Slot MD's are from Rig and TVD's are from Rig (Planned Datum #1 5051.0ft above Mean Sea Level)
Vertical Section is from 0.00N 0.00E on azimuth 356.920 degrees
Bottom hole distance is 4612.87 Feet on azimuth 356.92 degrees from Wellhead
Calculation method uses Minimum Curvature method
Prepared by Integrated Petroleum Technologies, Inc.
Date Printed: 16-Apr-2014



SYSDRILL
Closest Approach + Clearance Factor Summary Report
Wellbore: W DUCK CLUB 6 (PWB)

Ellipse separations are reported ONLY if BOTH wells have uncertainty data
Only Depth and Magnetic Reference Field error terms are correlated across tie points
Proximities beyond 3000.00ft with expansion rate of 0.00ft/1000ft are not reported
Scan limit is calculated on CENTRE to CENTRE distance

Summary data uses Closest Approach clearance calculation for all minima
Hole size/Casings ARE included
Hole size/Casings are NOT subtracted from Centre-Centre distance
Confidence limit of 95.00% / 2.80 SD.

Wellbore		
Name	Created	Last Revised
W DUCK CLUB 6 (PWB)	15-Apr-2014	16-Apr-2014

Well		
Name	Government ID	Last Revised
W DUCK CLUB 6		15-Apr-2014

Slot						
Name	Grid Northing	Grid Easting	Latitude	Longitude	North	East
DUCK CLUB 6	1233973.5570	3217849.5494	39.97302000	-104.72269000	1.13N	128.92E

Installation				
Name	Easting	Northing	Coord System Name	North Alignment
Duck Club	3217720.6327	1233972.4272	CO83-NF on NORTH AMERICAN DATUM 1983 datum	Grid

Field				
Name	Easting	Northing	Coord System Name	North Alignment
Wattenberg	3169265.3596	1428201.7578	CO83-NF on NORTH AMERICAN DATUM 1983 datum	Grid

Clearance Summary										
Offset WellName	Offset Wellbore	Offset Slot	Offset Structure	Separation [ft]	MD[ft]	Diverging From[ft]	Ellipse Separation [ft]	Ellipse MD[ft]	Clearance Factor	Clearance MD[ft]
W DUCK CLUB 5	W DUCK CLUB 5 (PWB)	DUCK CLUB 5	Duck Club	25.22	990.00	7750.48	18.48	1016.66	1.21	12004.15
W DUCK CLUB 7	W DUCK CLUB 7 (PWB)	DUCK CLUB 7	Duck Club	28.03	991.00	12004.15	21.19	1033.06	1.40	12004.15
W DUCK CLUB 4	W DUCK CLUB 4 (PWB)	DUCK CLUB 4	Duck Club	50.45	930.00	930.00	44.07	951.04	1.40	12004.15
W DUCK CLUB 8	W DUCK CLUB 8 (PWB)	DUCK CLUB 8	Duck Club	53.25	931.00	7750.48	46.84	967.44	2.26	12004.15
W DUCK CLUB 3	W DUCK CLUB 3 (PWB)	DUCK CLUB 3	Duck Club	75.67	869.02	12004.15	69.65	901.83	2.79	12004.15
W DUCK CLUB 9	W DUCK CLUB 9 (PWB)	DUCK CLUB 9	Duck Club	78.48	871.00	12004.15	72.43	901.83	2.80	12004.15
W DUCK CLUB 2	W DUCK CLUB 2 (PWB)	DUCK CLUB 2	Duck Club	103.70	809.00	12004.15	98.03	836.21	3.61	12004.15
W DUCK CLUB 1	W DUCK CLUB 1 (PWB)	DUCK CLUB 1	Duck Club	128.93	748.00	12004.15	123.62	770.59	4.18	12004.15
TRACY #17-12	TRACY #17-12 (PWB)	TRACY #17-12	Duck Club Offsets	1054.50	11280.00	11280.00	932.23	11302.09	8.57	11384.11
MILE-HI DUCK	MILE-HI DUCK	MILE-HI DUCK	Duck Club Offsets	1492.14	11458.32	11458.32	1362.81	11482.54	11.38	11662.98

All data is in Feet unless otherwise stated
Coordinates are from Slot MD's are from Rig and TVD's are from Rig (Planned Datum #1 5051.0ft above Mean Sea Level)
Vertical Section is from 0.00N 0.00E on azimuth 356.920 degrees
Prepared by Integrated Petroleum Technologies, Inc.
Date Printed: 16-Apr-2014



SYSDRILL
Closest Approach + Clearance Factor Summary Report
Wellbore: W DUCK CLUB 6 (PWB)

Clearance Summary										
Offset WellName	Offset Wellbore	Offset Slot	Offset Structure	Separation [ft]	MD[ft]	Diverging From[ft]	Ellipse Separation [ft]	Ellipse MD[ft]	Clearance Factor	Clearance MD[ft]
CLUB-TRACY #1	CLUB-TRACY #1 (AWB)	CLUB-TRACY #1								
TRACY 8-12	TRACY 8-12 (PWB)	TRACY 8-12	Duck Club Offsets	1701.57	10613.11	10613.11	1595.31	10645.92	15.56	10941.20