

**RADIAL CEMENT BOND LOG**  
**GAMMA RAY**  
**CCL**

Company	KERR MCGEE OIL AND GAS ONSHORE		
Well	DRY CREEK 22-35		
Field	WATTENBERG		
County	WELD		
State	COLORADO		
Company	KERR MCGEE OIL AND GAS ONSHORE		
Well	DRY CREEK 22-35		
Field	WATTENBERG		
County	WELD		
State	COLORADO		
Location:	API # : 05-123-31115 SE NW		Other Services
Permanent Datum	SEC 35	TWP 1N	RGE 67W
Log Measured From	G.L. KB 15		Elevation 5006
Drilling Measured From	K.B		K.B. 5021 D.F. 5020 G.L. 5006

Date	4-8-2014		
Run Number	ONE		
Depth Driller	8412		
Depth Logger	2600		
Bottom Logged Interval	2600		
Top Log Interval	SURFACE		
Open Hole Size	8.875		
Type Fluid	WATER		
Density / Viscosity	1.0		
Max. Recorded Temp.	111		
Estimated Cement Top	764		
Time Well Ready			
Time Logger on Bottom			
Equipment Number	4740		
Location	GREELEY, CO		
Recorded By	J.J.BULLARD		
Witnessed By	B.SMITH		

Run Number	Borehole Record		Tubing Record				
ONE	Bit	From	To	Size	Weight	From	To
TWO	8.875	1191	8412				

Casing Record	Size	Wgt/Ft	Top	Bottom
Surface String	8.63	24	0	1191
Prot. String				
Production String	4.5	11.6	0	8412
Liner				

<<< Fold Here >>>

All interpretations are opinions based on inferences from electrical or other measurements and we cannot and do not guarantee the accuracy or correctness of any interpretation, and we shall not, except in the case of gross or willful negligence on our part, be liable or responsible for any loss, costs, damages, or expenses incurred or sustained by anyone resulting from any interpretation made by any of our officers, agents or employees. These interpretations are also subject to our general terms and conditions set out in our current Price Schedule.



**Comments**

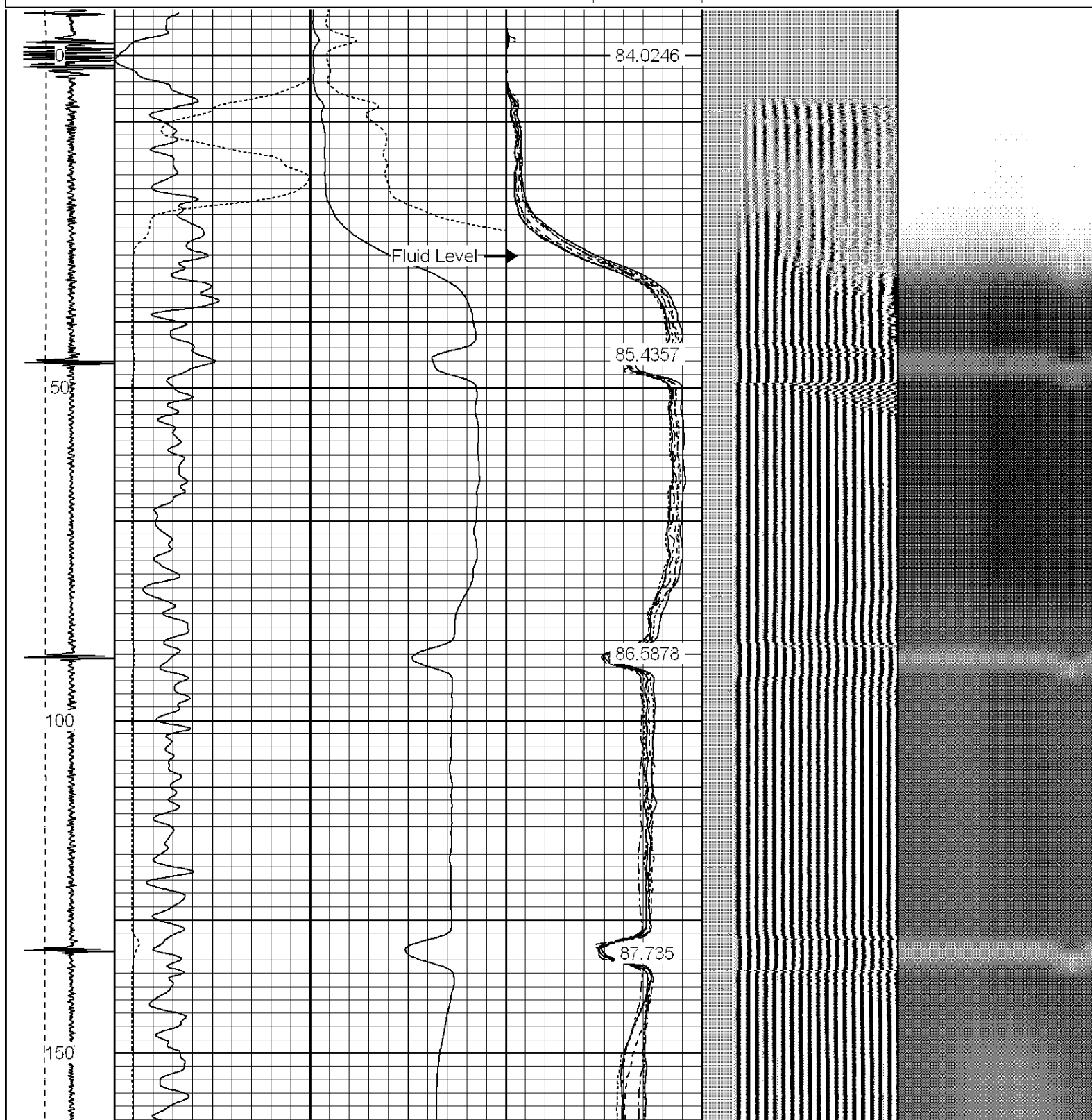
LOGGED TO VERIFY CEMENT BOND

THANK YOU FOR USING WARRIOR ENERGY SERVICES!!!

Sensor	Offset (ft)	Schematic	Description	Len (ft)	OD (in)	Wt (lb)
						

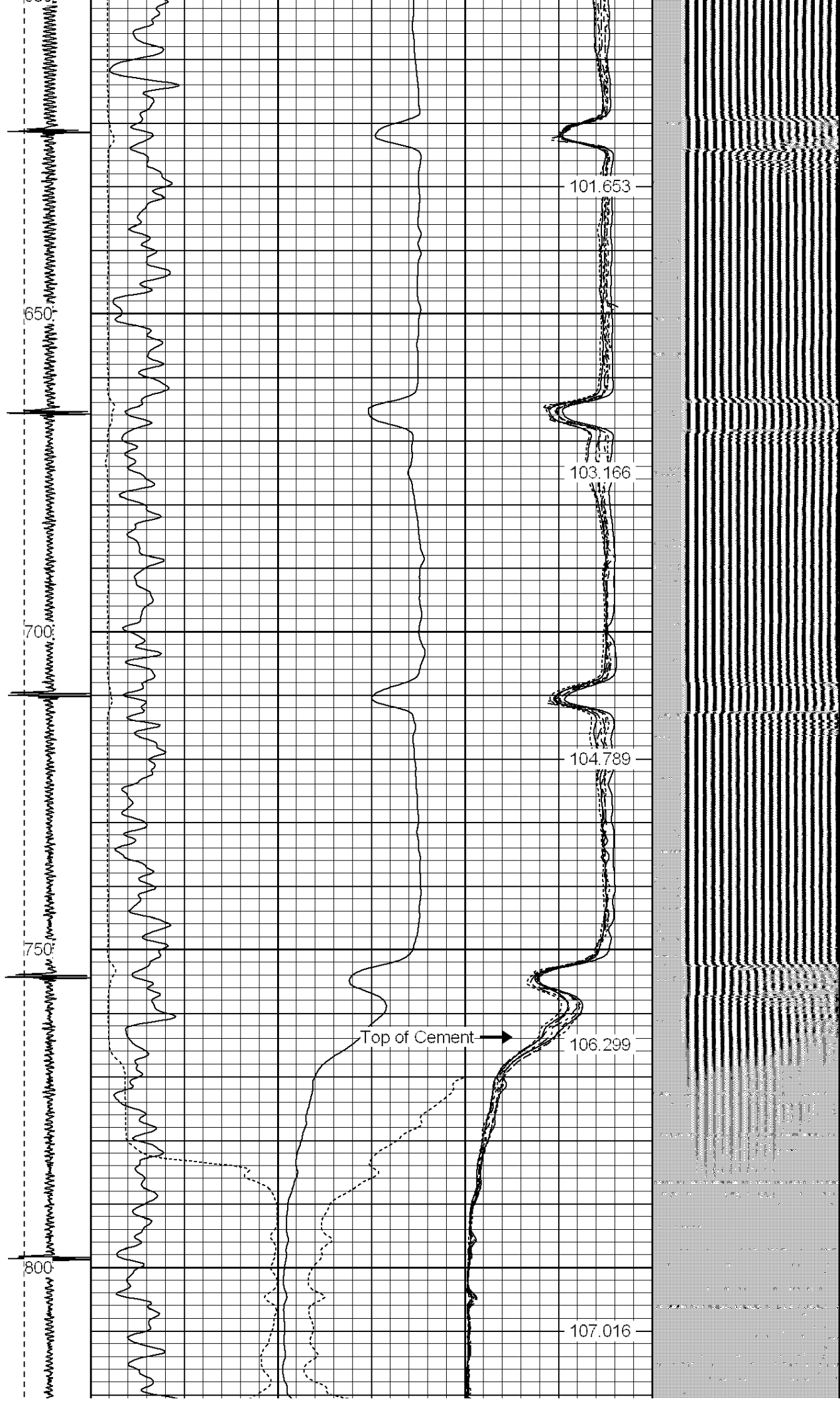
Tool Joint	Tool Joint Length (ft)	Tool Joint Weight (lb)	Tool Joint O.D. (in)	Tool Joint Description	Tool Joint Weight (lb)	Tool Joint O.D. (in)	Tool Joint Description
HEADVOLT	16.25				2.83	2.75	
IntTemp	14.83						
WVFS3FT	11.58				8.92	2.75	90.00
WVFCAL	11.58						
WVFS1	11.58						
WVFS2	11.58						
WVFS3	11.58						
WVFS4	11.58						
WVFS5	11.58						
WVFS6	11.58						
WVFS7	11.58						
WVFS8	11.58						
WVFS5FT	10.58						
CNLSC	6.00				3.00	2.75	40.00
CNSSC	5.17						
CCL	3.64						
GR	0.90				4.33	2.75	30.00
Dataset: dry creek 22-35.db: field/well/run1/pass2 Total Length: 19.08 ft Total Weight: 160.00 lb O.D.: 2.75 in							

-14 CCL	9	200	TT (usec)	800	0	AMP (mV)	100	0	AMPS1	100	200	VDL	1200	1	Cement Map	8
LSPD (ft/min)	0	200	GR (GAPI)	200	0	AMPx5 (mV)	20	0	AMPS2	100		1		1	100	
		200	GR (GAPI)	400		0	AMPS4	100								
0	250							0	AMPS5	100						
								0	AMPS6	100						
								0	AMPS7	100						
								0	AMPS8	100						
									IntTemp (degF)							

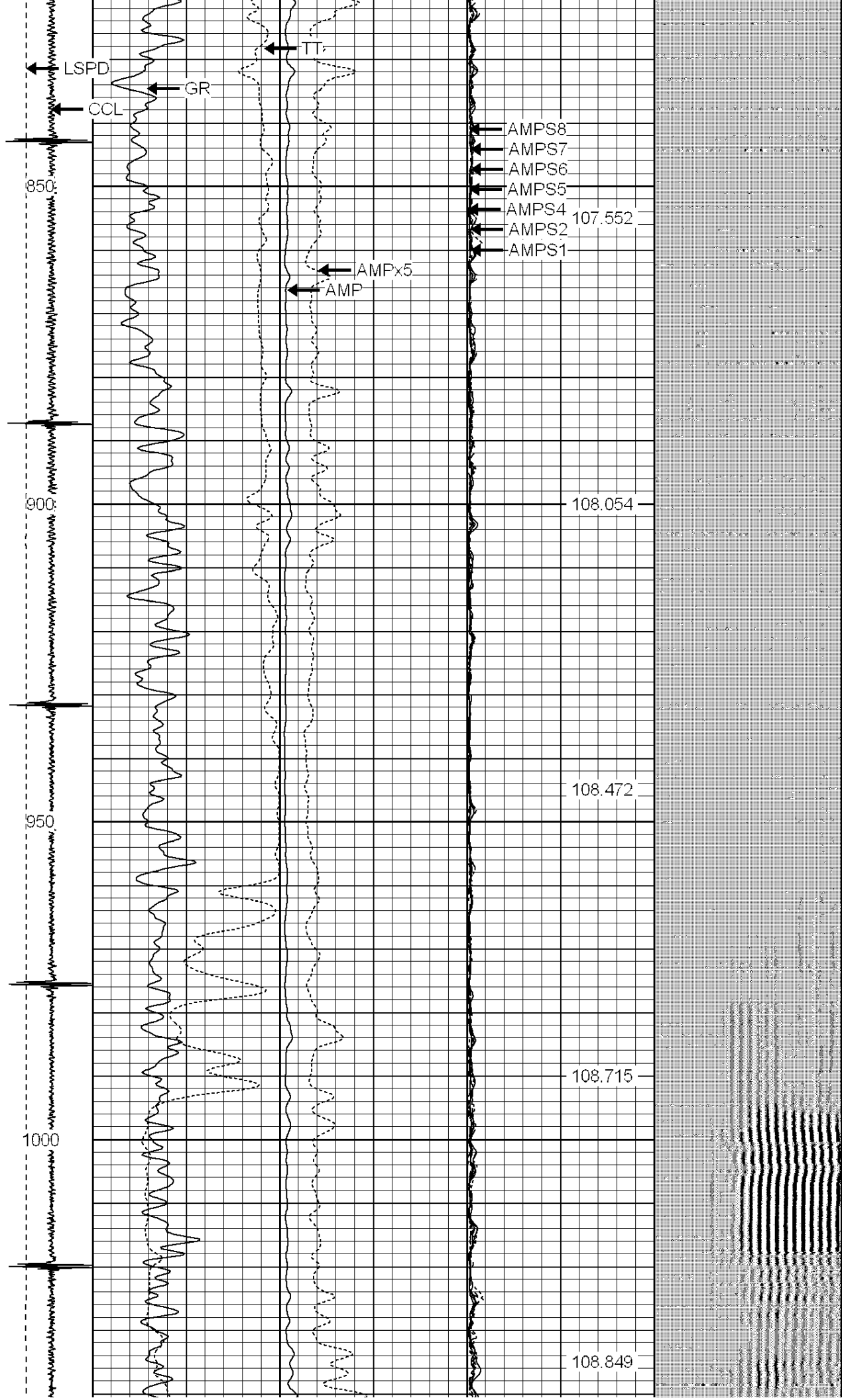


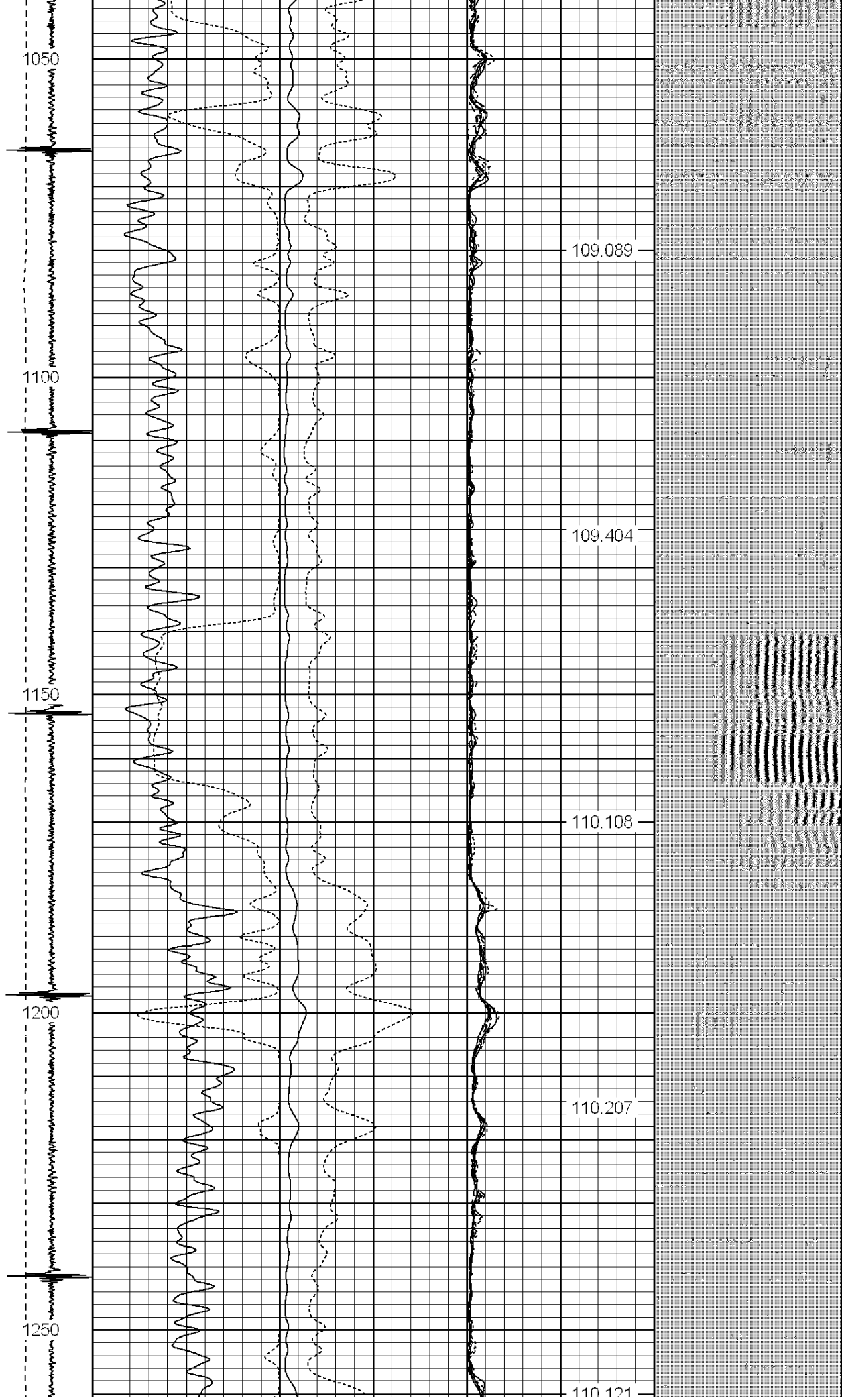




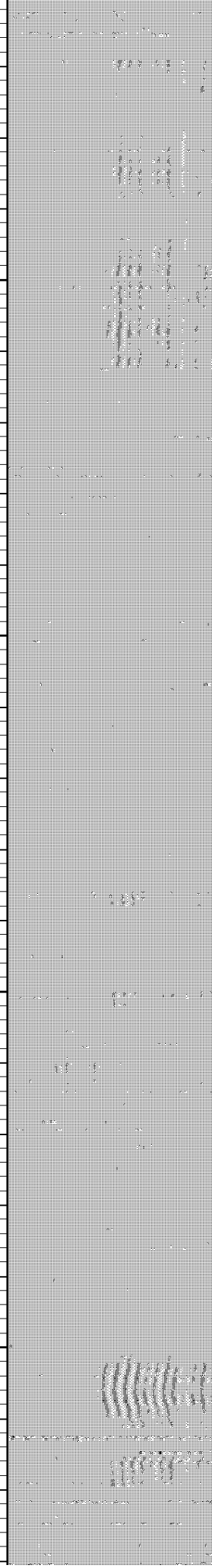
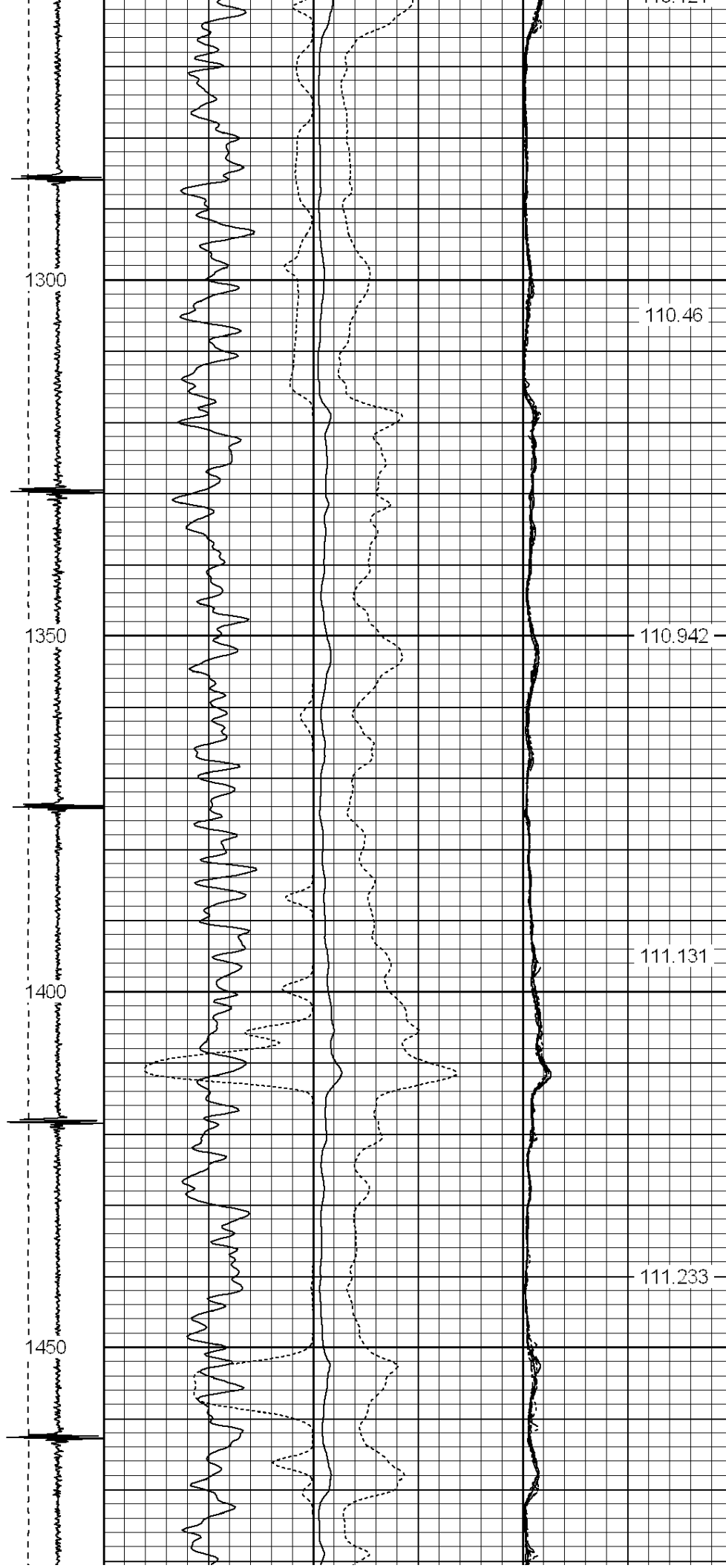




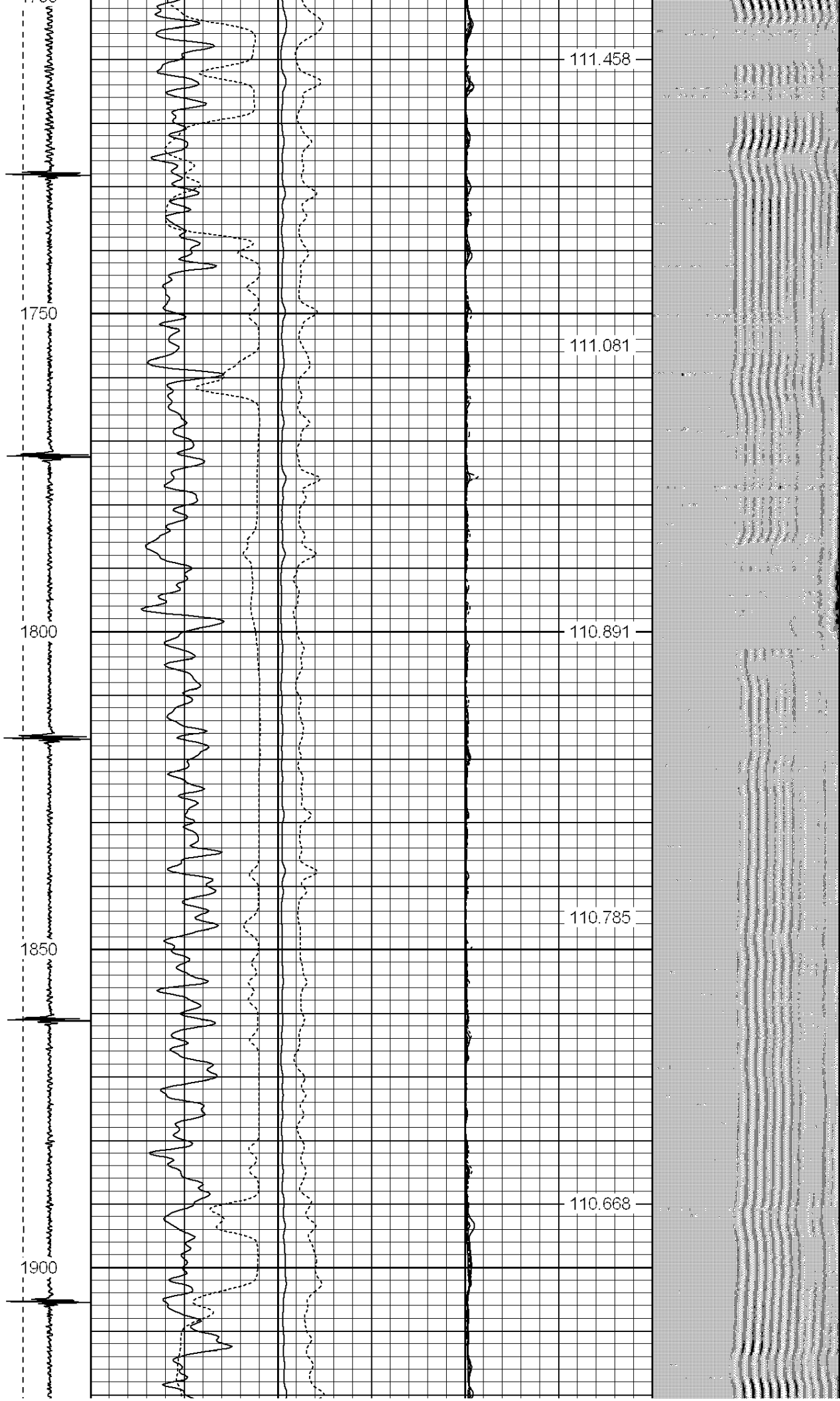


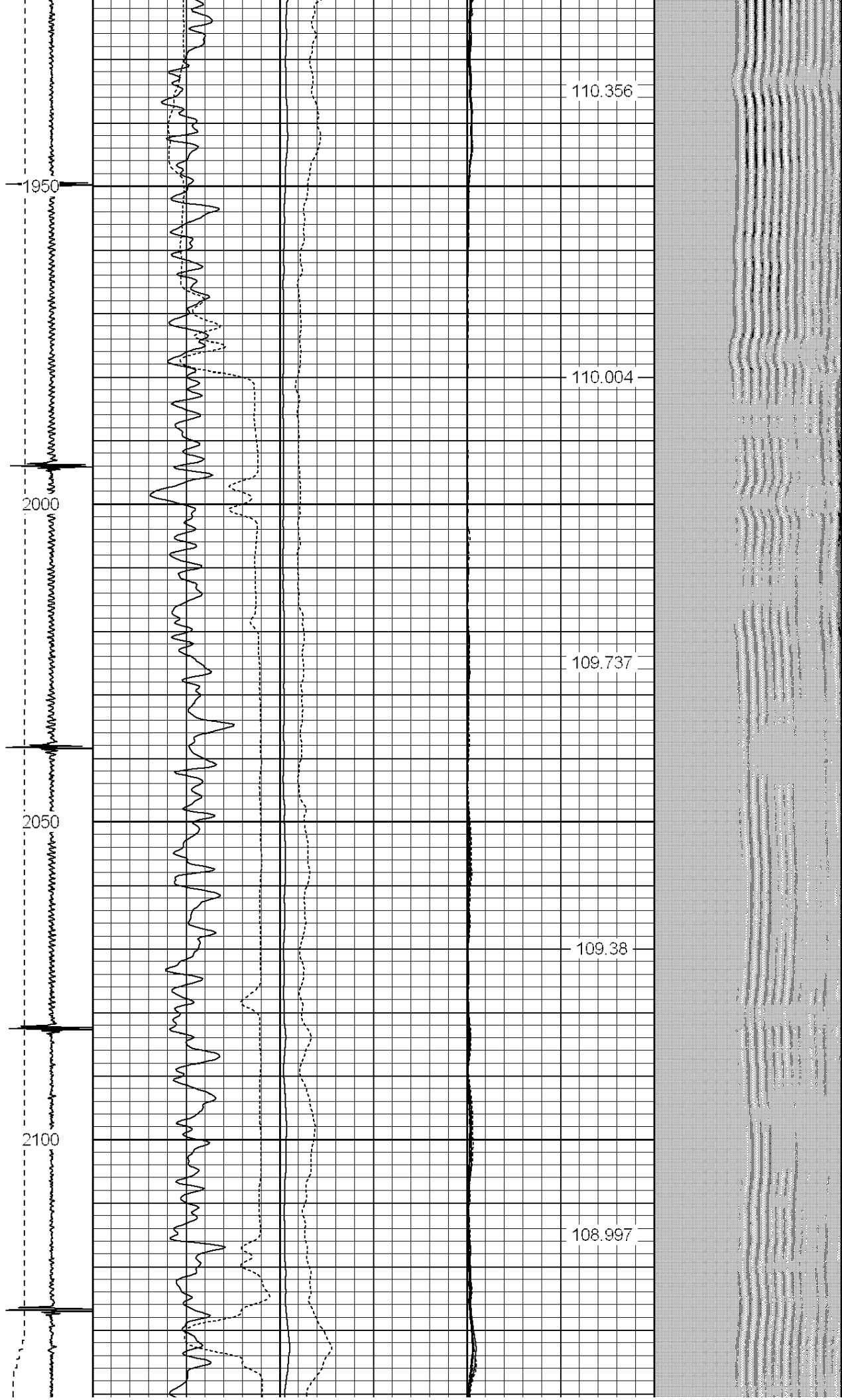




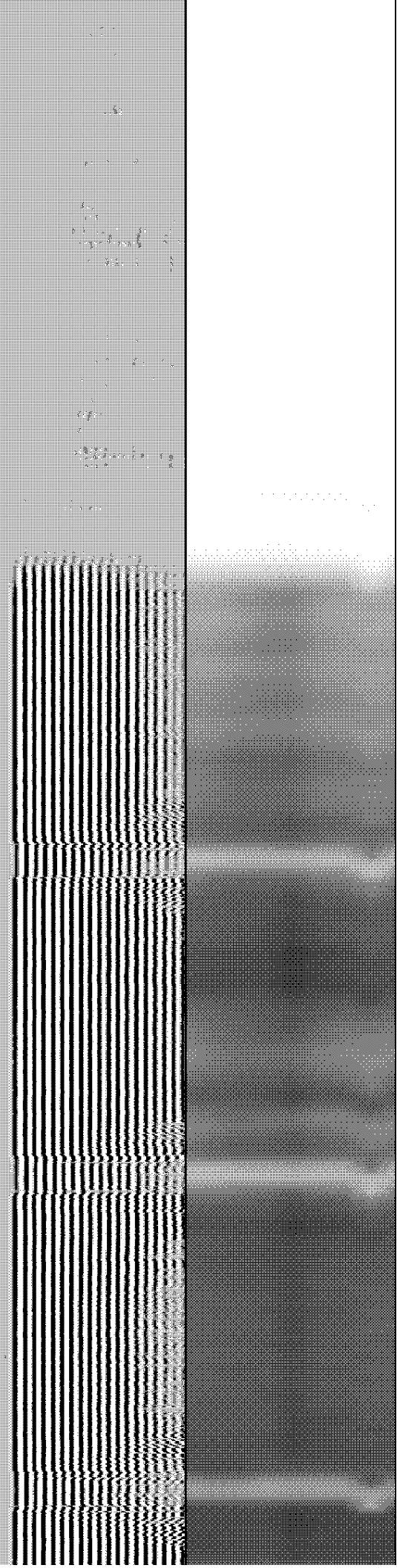
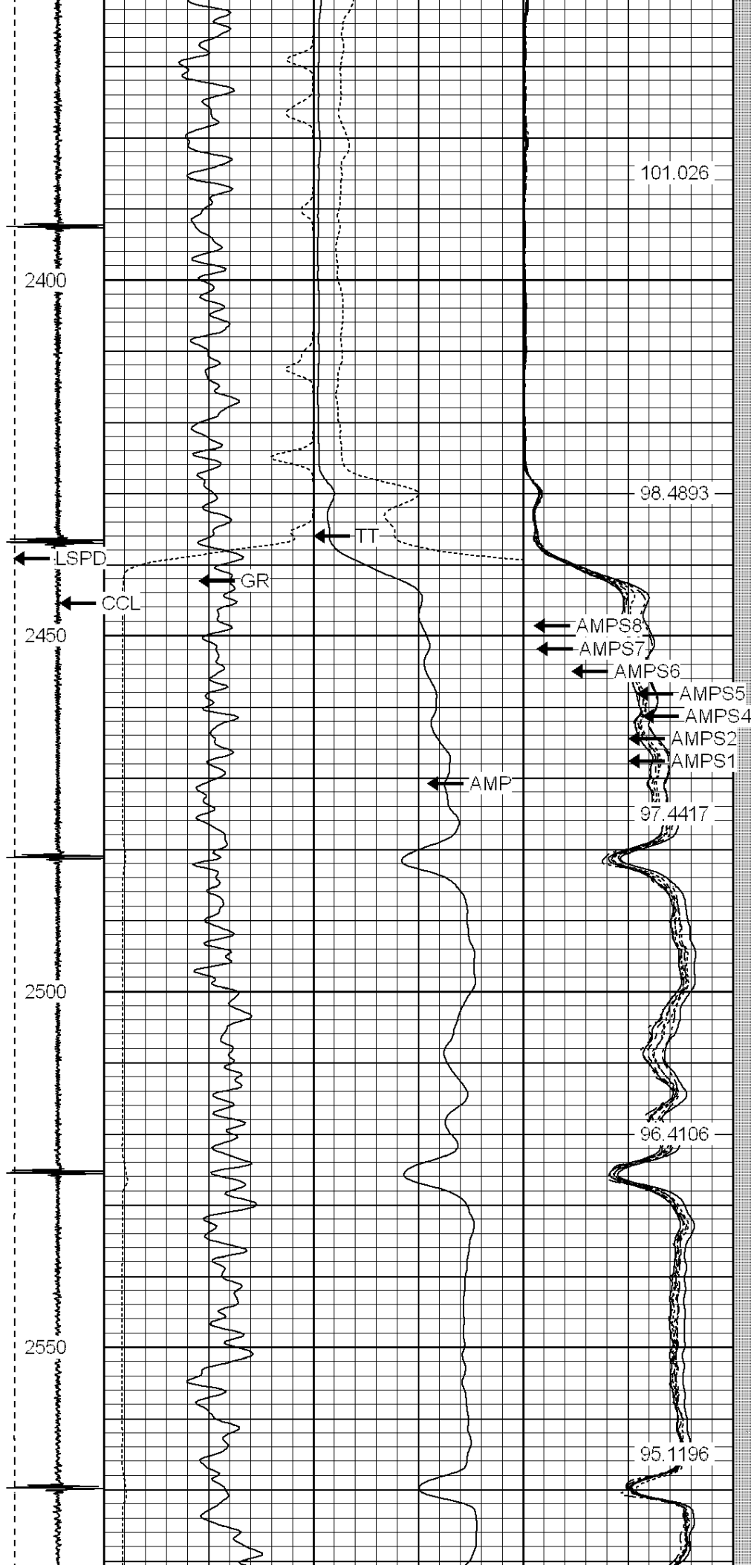




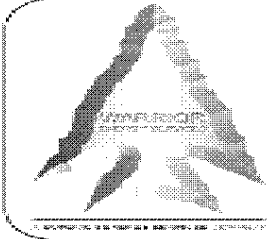
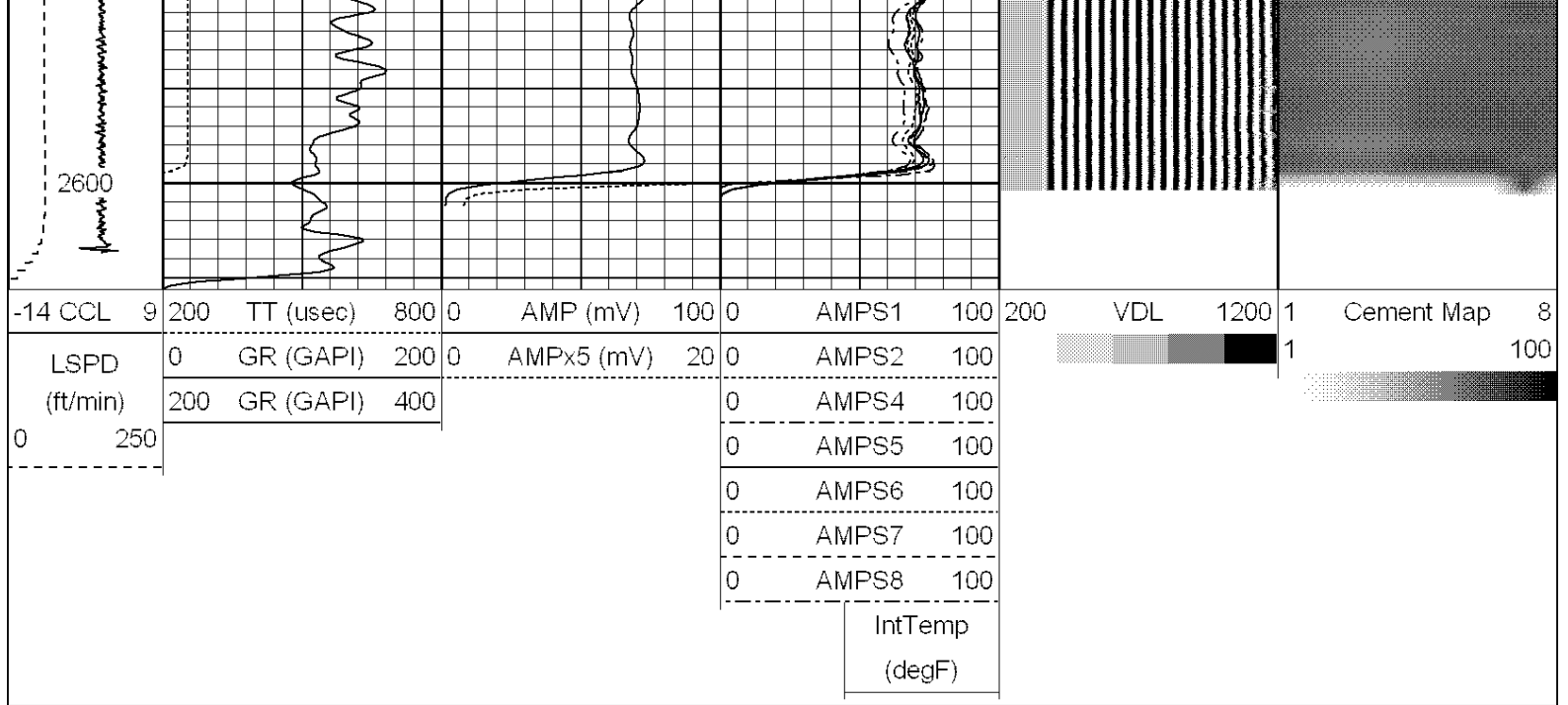












**WARRIOR**  
ENERGY SERVICES

Company KERR MCGEE OIL AND GAS ONSHORE  
Well DRY CREEK 22-35  
Field WATTENBERG  
County WELD  
State COLORADO