

WPX ENERGY ROCKY MOUNTAIN LLC-EBUS

PA 23-2

Aztec/1000

Post Job Summary

Cement Surface Casing

Date Prepared: 04/30/2014

Submitted by: Grand Junction Cement Engineering

The Road to Excellence Starts with Safety

Sold To #: 300721	Ship To #: 3191092	Quote #:	Sales Order #: 0901138122
Customer: WPX ENERGY ROCKY MOUNTAIN LLC-EBUS		Customer Rep:	
Well Name: WPX ENERGY	Well #: PA 23-2	API/UWI #: 05-045-22134-00	
Field: PARACHUTE	City (SAP): PAR	County/Parish: GARFIELD	State: COLORADO
Legal Description: NE SW-2-7S-95W-2054FSL-1545FWL			
Contractor:		Rig/Platform Name/Num: Aztec 1000	
Job BOM: 7521			
Well Type: DIRECTIONAL GAS			
Sales Person: HALAMERICA\HB50180		Srvc Supervisor: Kevin Miller	
Job			

Formation Name			
Formation Depth (MD)	Top		Bottom
Form Type			BHST
Job depth MD	903ft		Job Depth TVD
Water Depth			Wk Ht Above Floor 4
Perforation Depth (MD)	From		To

Well Data										
Description	New / Used	Size in	ID in	Weight lbm/ft	Thread	Grade	Top MD ft	Bottom MD ft	Top TVD ft	Bottom TVD ft
Casing		9.625	9.001	32.3			0	903		0
Open Hole Section			13.5				0	913		0

Tools and Accessories									
Type	Size in	Qty	Make	Depth ft		Type	Size in	Qty	Make
Guide Shoe	9.625	1		878		Top Plug	9.625	1	HES
Float Shoe	9.625	1				Bottom Plug	9.625		
Float Collar	9.625	1				SSR plug set	9.625		
Insert Float						Plug Container	9.625	1	HES
Stage Tool						Centralizers	9.625		

Miscellaneous Materials											
Gelling Agt		Conc		Surfactant		Conc		Acid Type		Qty	Conc
Treatment Fld		Conc		Inhibitor		Conc		Sand Type		Size	Qty

Fluid Data										
Stage/Plug #: 1										
Fluid #	Stage Type	Fluid Name	Qty	Qty UoM	Mixing Density lbm/gal	Yield ft3/sack	Mix Fluid Gal	Rate bbl/min	Total Mix Fluid Gal	
1	Fresh Water Spacer	Fresh Water Spacer	50	bbl	8.33			8		
Fluid #	Stage Type	Fluid Name	Qty	Qty UoM	Mixing Density lbm/gal	Yield ft3/sack	Mix Fluid Gal	Rate bbl/min	Total Mix Fluid Gal	
2	VersaCem Tail	VERSACEM (TM) SYSTEM	250	Sack/Ton	12.8	2.11		8	11.77	

11.76 Gal		FRESH WATER							
94 lbm		TYPE I / II CEMENT, BULK (101439798)							
Fluid #	Stage Type	Fluid Name	Qty	Qty UoM	Mixing Density lbm/gal	Yield ft3/sack	Mix Fluid Gal	Rate bbl/min	Total Mix Fluid Gal
3	Displacement	Displacement	65.8	bbl	8.3				
Cement Left In Pipe		Amount	41 ft		Reason		Shoe Joint		
Comment									

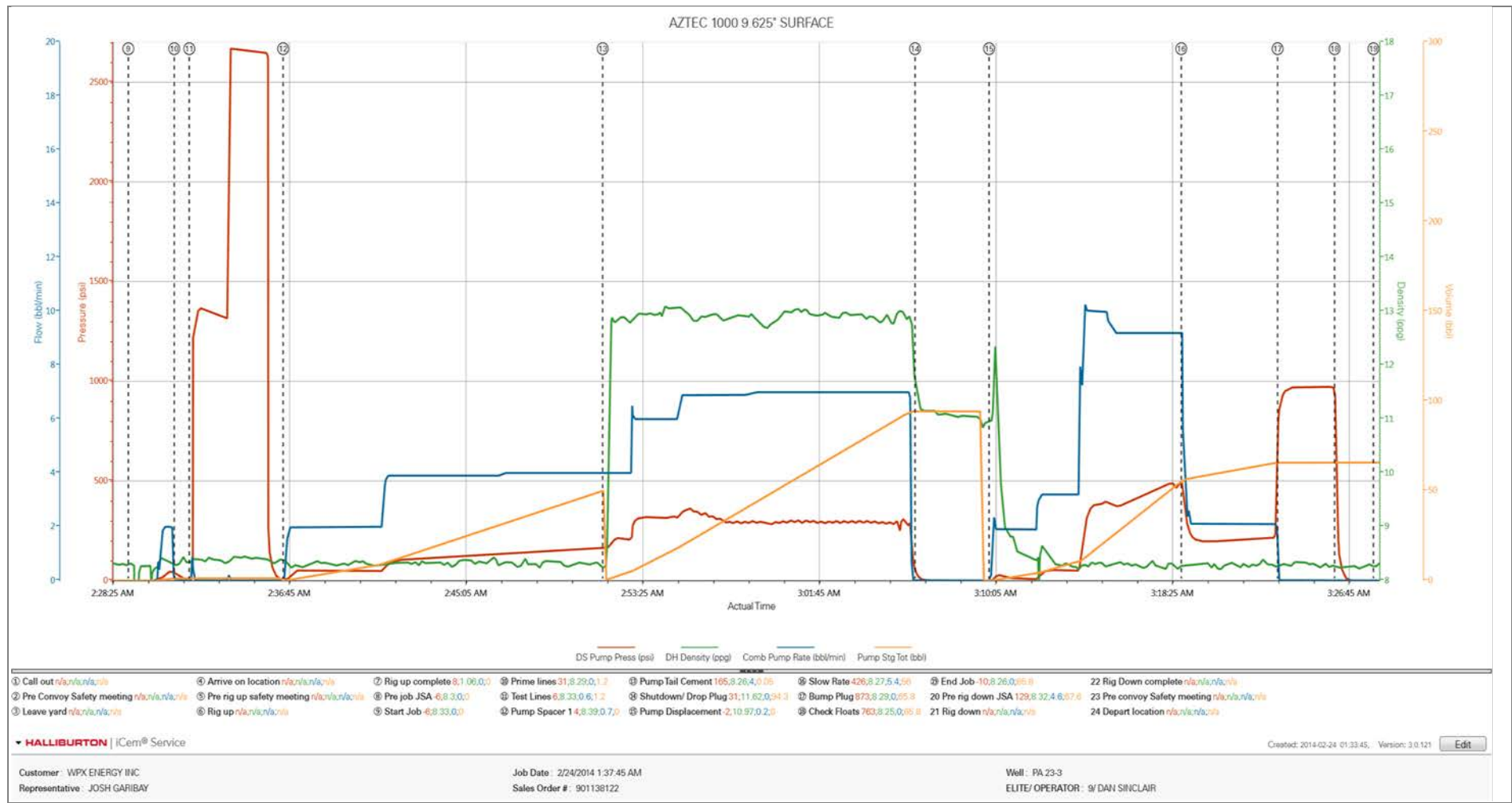
1.1 Job Event Log

Type	Seq. No.	Activity	Graph Label	Date	Time	Source	DS Pump Press (psi)	DH Density (ppg)	Comb Pump Rate (bbl/min)	Pump Stg Tot (bbl)	Comment
Event	1	Call Out	Call out	2/23/2014	18:00:00	USER					
Event	2	Pre-Convoy Safety Meeting	Pre Convoy Safety meeting	2/23/2014	20:00:00	USER					
Event	3	Depart Home for Location	Leave yard	2/23/2014	20:30:00	USER					
Event	4	Arrive At Loc	Arrive on location	2/24/2014	00:00:00	USER					RIG STILL RUNNING CASING
Event	5	Pre-Rig Up Safety Meeting	Pre rig up safety meeting	2/24/2014	00:45:00	USER					ALL HES PERSONEL
Event	6	Rig-Up Equipment	Rig up	2/24/2014	01:00:00	USER					
Event	7	Rig-Up Completed	Rig up complete	2/24/2014	01:50:00	USER	8.00	1.06	0.00	0.0	
Event	8	Pre-Job Safety Meeting	Pre job JSA	2/24/2014	02:15:00	USER	-6.00	8.30	0.00	0.0	ALL HES AND RIG PERSONEL
Event	9	Start Job	Start Job	2/24/2014	02:29:14	COM6					TD 913', TP 903', SJ 41.49', OH 13.5", CSG 9.625" 32.3#, MW 9#, YP 24, PV 24
Event	10	Other	Prime lines	2/24/2014	02:31:24	COM6					
Event	11	Test Lines	Test Lines	2/24/2014	02:32:07	COM6	6.00	8.33	0.60	1.2	KICKOUT FUNCTION TEST, 5TH GEAR STALL OUT, PSI TEST AT 2500
Event	12	Pump Spacer 1	Pump Spacer 1	2/24/2014	02:36:33	COM6	4.00	8.39	0.70	0.0	FRESH WATER, PUMPED 50 BBLS AT CO REPS REQUEST
Event	13	Pump Tail Cement	Pump Tail Cement	2/24/2014	02:51:37	COM6					250 SKS, 12.8 PPG, 2.11 FT3/SK, 11.77 GAL/SK
Event	14	Shutdown	Shutdown/ Drop Plug	2/24/2014	03:06:22	USER	31.00	11.62	0.00	94.3	PLUG WENT, WASH UP ON TOP OF PLUG
Event	15	Pump Displacement	Pump Displacement	2/24/2014	03:09:51	COM6	-2.00	10.97	0.20	0.0	15 BBLS OF CEMENT TO SURFACE
Event	16	Slow Rate	Slow Rate	2/24/2014	03:18:55	USER	426.00	8.27	5.40	56.0	
Event	17	Bump Plug	Bump Plug	2/24/2014	03:23:28	USER	873.00	8.29	0.00	65.8	
Event	18	Check Floats	Check Floats	2/24/2014	03:26:10	USER	763.00	8.25	0.00	65.8	FLOATS HELD, 1 BBL BACK
Event	19	End Job	End Job	2/24/2014	03:28:00	COM6	-10.00	8.26	0.00	65.8	

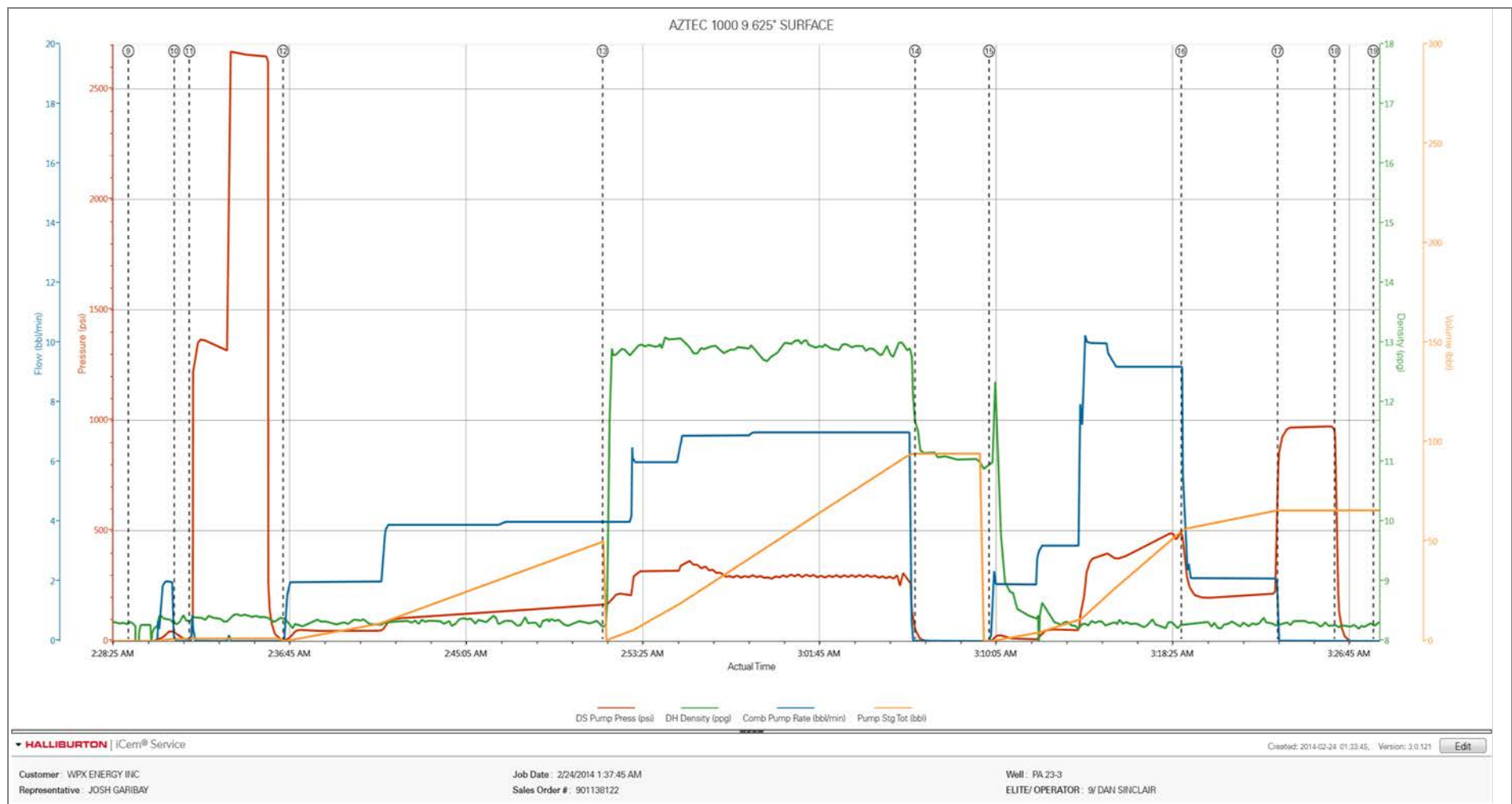
Event	20	Post-Job Safety Meeting (Pre Rig-Down)	Pre rig down JSA	2/24/2014	03:33:00	USER	129.00	8.32	4.60	67.6	ALL HES PERSONEL
Event	21	Rig-Down Equipment	Rig down	2/24/2014	03:40:00	USER	-10.00	8.28	0.00	99.1	
Event	22	Rig-Up Completed	Rig Down complete	2/24/2014	04:20:00	USER					
Event	23	Pre-Convoy Safety Meeting	Pre convoy Safety meeting	2/24/2014	04:30:00	USER					
Event	24	Depart Location	Depart location	2/24/2014	04:40:00	USER					THANK YOU FOR CHOOSING HALLIBURTON, KEVIN MILLER AND CREW

2.0 Attachments

2.1 Aztec 1000 Surface PA 23-3 Legends.png



2.2 Aztec 1000 Surface PA 23-3 Without Legends.png



HALLIBURTON

Water Analysis Report

Company: WPX

Submitted by: KEVIN MILLER

Attention: J.Trout

Lease: PA

Well #: 23-2

Date: 2/24/2014

Date Rec.: 2/24/2014

S.O.#: 901138122

Job Type: SURFACE

Specific Gravity	<i>MAX</i>	1
pH	<i>8</i>	6.5
Potassium (K)	<i>5000</i>	200 Mg / L
Calcium (Ca)	<i>500</i>	0 Mg / L
Iron (FE2)	<i>300</i>	0 Mg / L
Chlorides (Cl)	<i>3000</i>	0 Mg / L
Sulfates (SO ₄)	<i>1500</i>	120 Mg / L
Chlorine (Cl ₂)		0 Mg / L
Temp	<i>40-80</i>	41 Deg
Total Dissolved Solids		250 Mg / L

Respectfully: KEVIN MILLER

Title: CEMENTING SUPERVISOR

Location: Grand Junction, CO

NOTICE: This report is limited to the described sample tested. Any person using or relying on this report agrees that Halliburton shall not be liable for any loss or damage whether due to act or omission resulting from such report or its use.