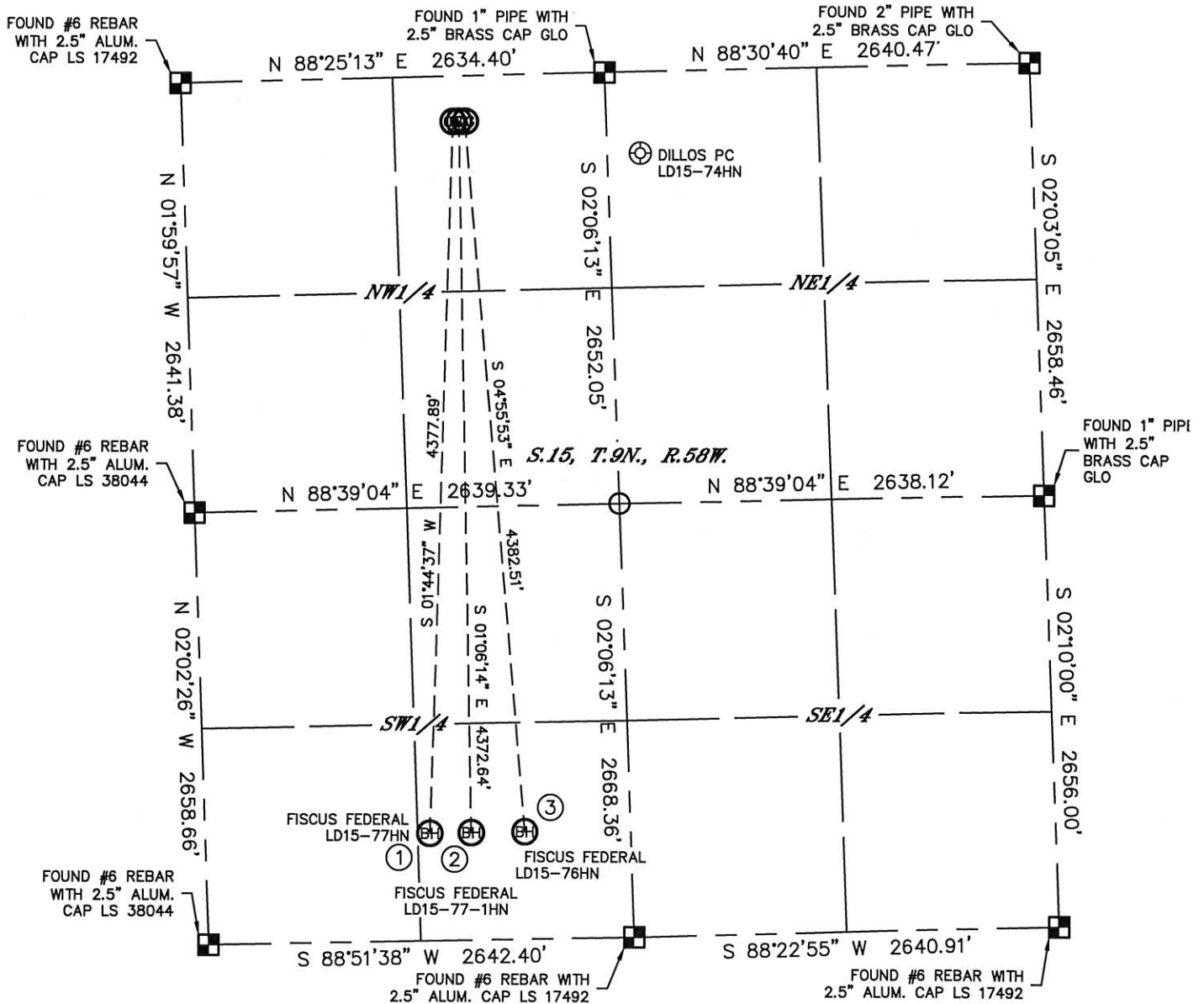


MULTI-WELL PLAN

FISCUS FEDERAL LD15-77HN PAD
THIS MAP DOES NOT REPRESENT A BOUNDARY SURVEY

SECTION: 15
TOWNSHIP: 9N
RANGE: 58W

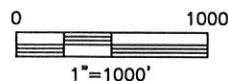


- | | | |
|---|---|---|
| ① | ② | ③ |
| -BOTTOM HOLE-
FISCUS FEDERAL
LD15-77HN
660' FSL
1395' FWL
LAT: 40.74586°N
LONG: 103.85454°W | -BOTTOM HOLE-
FISCUS FEDERAL
LD15-77-1HN
660' FSL
1650' FWL
LAT: 40.74586°N
LONG: 103.85362°W | -BOTTOM HOLE-
FISCUS FEDERAL
LD15-76HN
660' FSL
1980' FWL
LAT: 40.74586°N
LONG: 103.85243°W |



LEGEND

- = ALIQUOT MONUMENT AS DESCRIBED
- = CALCULATED POSITION

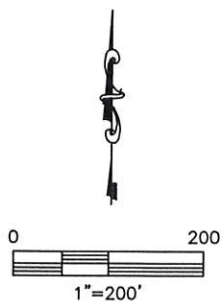
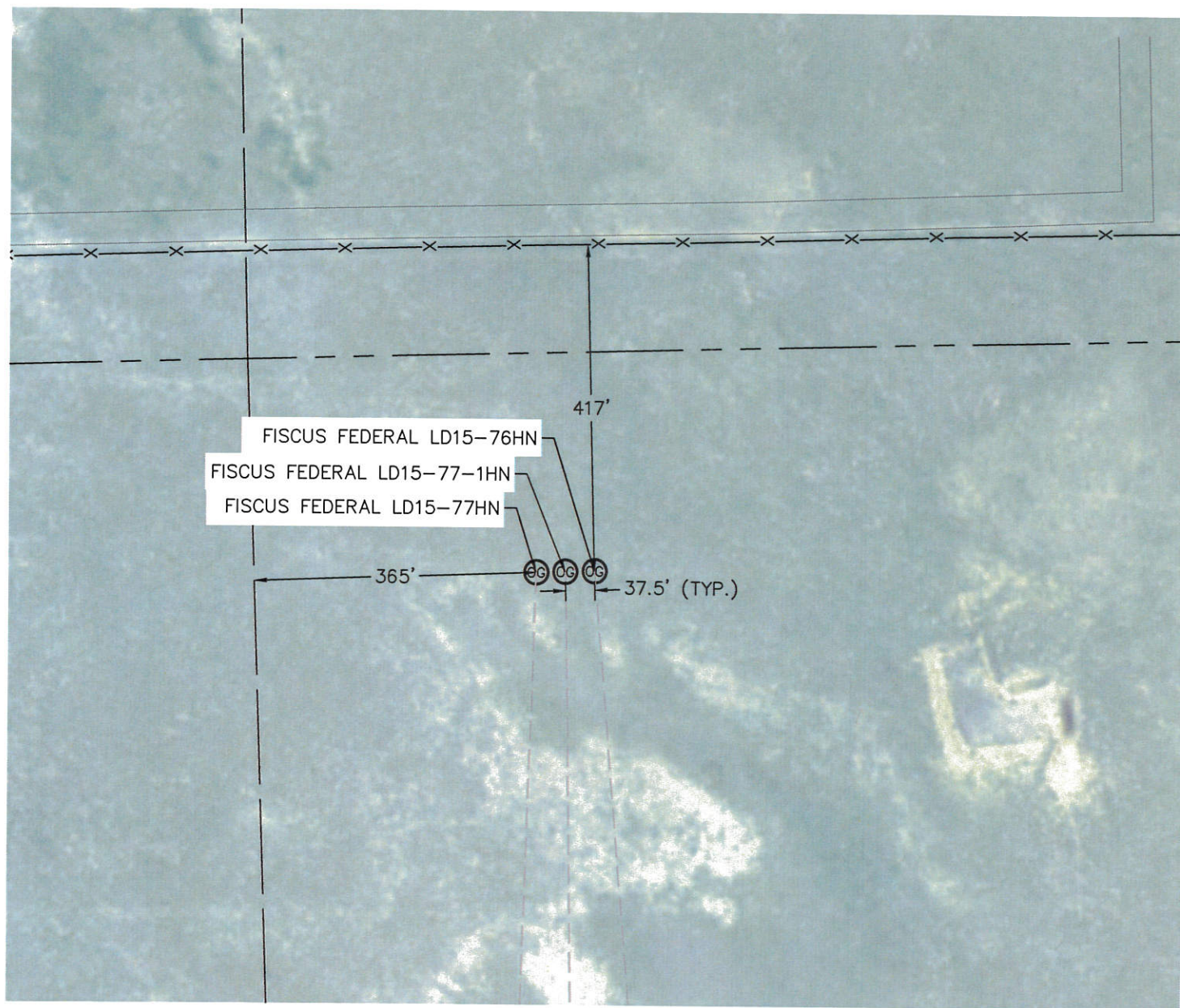


Lat40°, Inc. 1635 Foxtrail Drive, Suite 325 Loveland, CO 970-776-3321

MULTI-WELL PLAN

FISCUS FEDERAL LD15-77HN PAD

SECTION: 15
TOWNSHIP: 9N
RANGE: 58W



DATE: 5/14/2014
PROJECT#: 2012159