

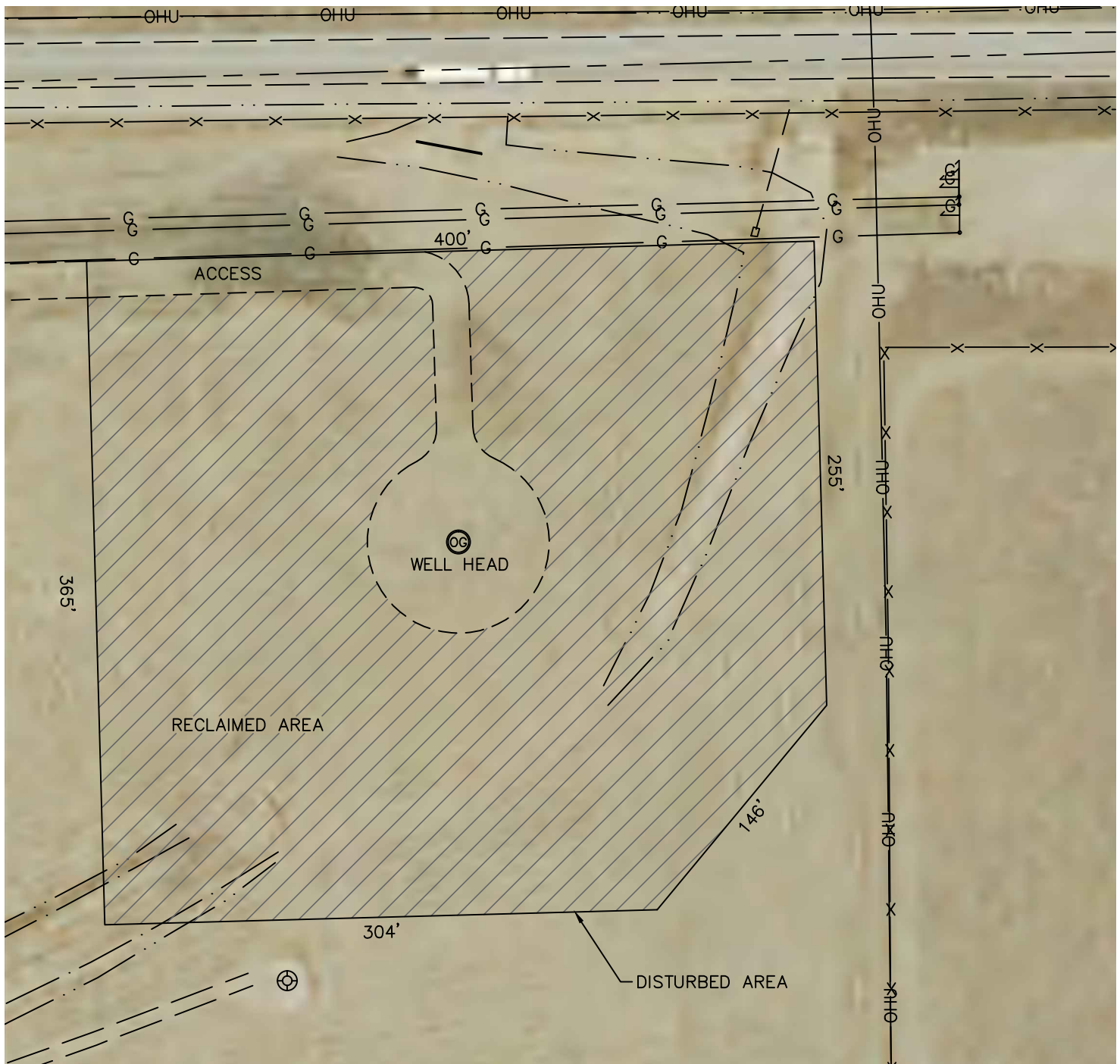


Lat40°, Inc. 1635 Foxtrail Drive, Suite 325 Loveland, CO 970-776-3321

# PROPOSED SCALED FACILITY DRAWING

HPD PLATTEVILLE 2

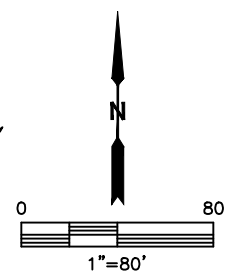
SECTION: 24  
TOWNSHIP: 3N  
RANGE: 66W



## LEGEND

- OG PROPOSED WELL HEAD
- T TANK BATTERY
- W WATER TANK
- W WATER VAULT
- S SEPARATOR
- ECD
- M METER
- VRU- VAPOR RECOVERY UNIT

**TOTAL DISTURBED AREA OF LOCATION: ±3.2 ACRES**  
**TOTAL SIZE OF LOCATION AFTER RECLAMATION: ±0.3 ACRES**



DATE: 4/18/2014  
PROJECT#: 2014050