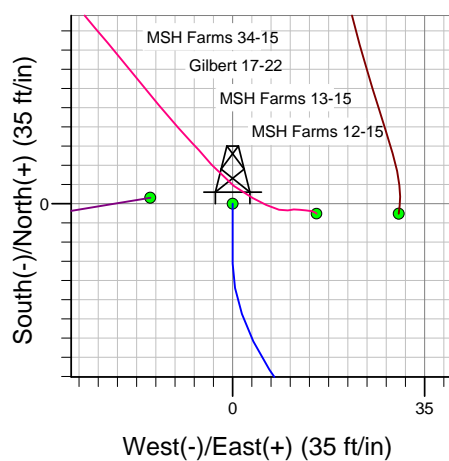
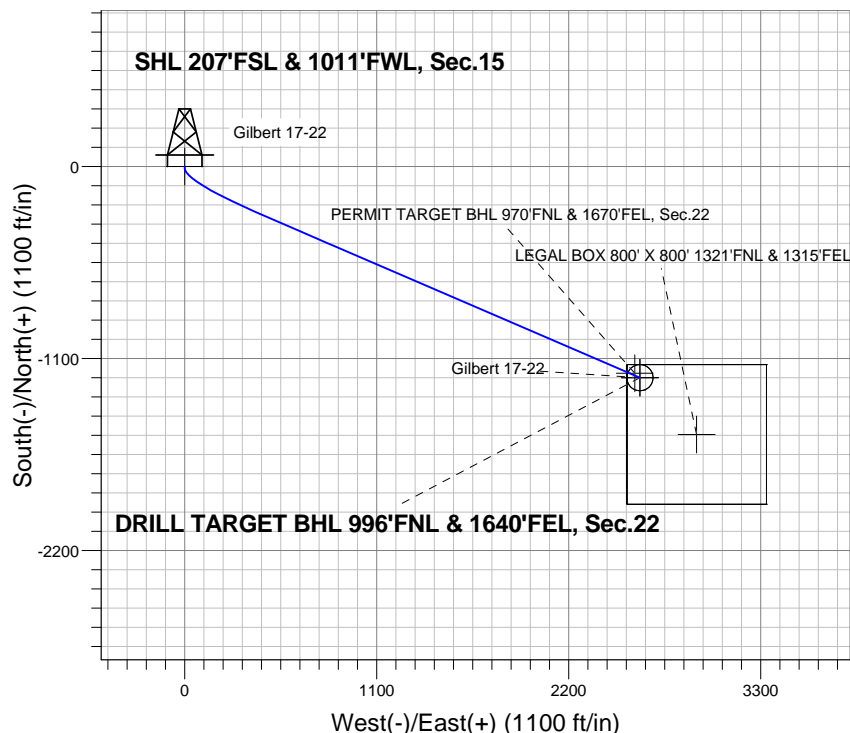
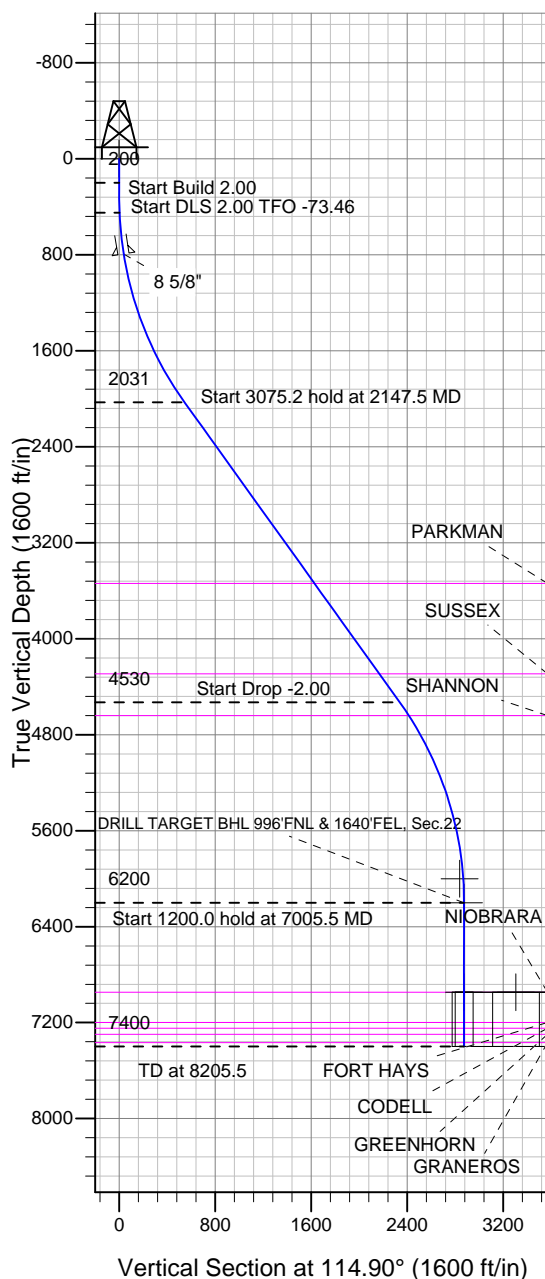


Bayswater Exploration & Production, LLC



Gilbert 17-22
Plan #1 (12-27-13)
12:21, December 30 2013



Azimuths to True North
Magnetic North: 8.60°

Magnetic Field
Strength: 52937.2snT
Dip Angle: 67.08°
Date: 12/27/2013
Model: IGRF2010

WELLBORE TARGET DETAILS (LAT/LONG)

Name	TVD	+N/-S	+E/-W	Latitude	Longitude	Shape
SHL 207'FSL & 1011'FWL, Sec.15	1.0	0.0	0.0	40.567527	-104.885178	Point
PERMIT TARGET BHL 970'FNL & 1670'FEL, Sec.22	6000.0	-1184.6	2577.8	40.564275	-104.875900	Point
DRILL TARGET BHL 996'FNL & 1640'FEL, Sec.22	6200.0	-1210.6	2607.8	40.564204	-104.875792	Point
LEGAL BOX 800' X 800' 1321'FNL & 1315'FEL	6947.0	-1535.6	2932.8	40.563312	-104.874623	Rectangle (Sides: L800.0 W800.0)
TARGET CIRCLE 996'FNL & 1640'FEL	6947.0	-1210.6	2607.8	40.564204	-104.875792	Circle (Radius: 75.0)

SECTION DETAILS

Sec	MD	Inc	Azi	TVD	+N/-S	+E/-W	DLeg	TFace	VSec	Target
1	0.0	0.00	0.00	0.0	0.0	0.0	0.00	0.00	0.0	
2	200.0	0.00	0.00	200.0	0.0	0.0	0.00	0.00	0.0	
3	450.0	5.00	180.00	449.7	-10.9	0.0	2.00	180.00	4.6	
4	2147.5	35.66	113.31	2031.4	-288.8	468.2	2.00	-73.46	546.3	
5	5222.7	35.66	113.31	4530.0	-998.1	2114.5	0.00	0.00	2338.2	
6	7005.5	0.00	0.00	6200.0	-1210.6	2607.8	2.00	180.00	2875.1	DRILL TARGET BHL 996'FNL & 1640'FEL, Sec.22
7	8205.5	0.00	0.00	7400.0	-1210.6	2607.8	0.00	0.00	2875.1	



Bayswater Exploration & Production, LLC

SEC.15-T7N-R67W

MSH Farms 15-P Pad Sec.15-T7N-R67W

Gilbert 17-22

Wellbore #1

Plan: Plan #1 (12-27-13)

Standard Planning Report

30 December, 2013



Database:	Landmark	Local Co-ordinate Reference:	Well Gilbert 17-22
Company:	Bayswater Exploration & Production, LLC	TVD Reference:	WELL @ 5067.0ft (RKB - 13')
Project:	SEC.15-T7N-R67W	MD Reference:	WELL @ 5067.0ft (RKB - 13')
Site:	MSH Farms 15-P Pad Sec.15-T7N-R67W	North Reference:	True
Well:	Gilbert 17-22	Survey Calculation Method:	Minimum Curvature
Wellbore:	Wellbore #1		
Design:	Plan #1 (12-27-13)		

Project	SEC.15-T7N-R67W		
Map System:	US State Plane 1983	System Datum:	Mean Sea Level
Geo Datum:	North American Datum 1983		Using Well Reference Point
Map Zone:	Colorado Northern Zone		Using geodetic scale factor

Site	MSH Farms 15-P Pad Sec.15-T7N-R67W				
Site Position:		Northing:	1,450,181.70ft	Latitude:	40.567522
From:	Lat/Long	Easting:	3,170,840.07ft	Longitude:	-104.885069
Position Uncertainty:	0.0 ft	Slot Radius:	"	Grid Convergence:	0.40 °

Well		Gilbert 17-22				
Well Position	+N-S	1.8 ft	Northing:	1,450,183.31 ft	Latitude:	40.567527
	+E-W	-30.3 ft	Easting:	3,170,809.77 ft	Longitude:	-104.885178
Position Uncertainty		0.0 ft	Wellhead Elevation:	ft	Ground Level:	5,054.0 ft

Wellbore	Wellbore #1				
Magnetics	Model Name	Sample Date	Declination (°)	Dip Angle (°)	Field Strength (nT)
	IGRF2010	12/27/2013	8.60	67.08	52,937

Design	Plan #1 (12-27-13)			
Audit Notes:				
Version:	Phase:	PROTOTYPE	Tie On Depth:	0.0
Vertical Section:	Depth From (TVD) (ft)	+N/-S (ft)	+E/-W (ft)	Direction (°)
	0.0	0.0	0.0	114.90

Plan Sections										
Measured Depth (ft)	Inclination (°)	Azimuth (°)	Vertical Depth (ft)	+N/-S (ft)	+E/-W (ft)	Dogleg Rate (°/100ft)	Build Rate (°/100ft)	Turn Rate (°/100ft)	TFO (°)	Target
0.0	0.00	0.00	0.0	0.0	0.0	0.00	0.00	0.00	0.00	
200.0	0.00	0.00	200.0	0.0	0.0	0.00	0.00	0.00	0.00	
450.0	5.00	180.00	449.7	-10.9	0.0	2.00	2.00	0.00	180.00	
2,147.5	35.66	113.31	2,031.4	-288.8	468.2	2.00	1.81	-3.93	-73.46	
5,222.7	35.66	113.31	4,530.0	-998.1	2,114.5	0.00	0.00	0.00	0.00	
7,005.5	0.00	0.00	6,200.0	-1,210.6	2,607.8	2.00	-2.00	0.00	180.00	DRILL TARGET BH
8,205.5	0.00	0.00	7,400.0	-1,210.6	2,607.8	0.00	0.00	0.00	0.00	

Database:	Landmark	Local Co-ordinate Reference:	Well Gilbert 17-22
Company:	Bayswater Exploration & Production, LLC	TVD Reference:	WELL @ 5067.0ft (RKB - 13')
Project:	SEC.15-T7N-R67W	MD Reference:	WELL @ 5067.0ft (RKB - 13')
Site:	MSH Farms 15-P Pad Sec.15-T7N-R67W	North Reference:	True
Well:	Gilbert 17-22	Survey Calculation Method:	Minimum Curvature
Wellbore:	Wellbore #1		
Design:	Plan #1 (12-27-13)		

Planned Survey									
Measured Depth (ft)	Inclination (°)	Azimuth (°)	Vertical Depth (ft)	+N/-S (ft)	+E/-W (ft)	Vertical Section (ft)	Dogleg Rate (°/100ft)	Build Rate (°/100ft)	Turn Rate (°/100ft)
0.0	0.00	0.00	0.0	0.0	0.0	0.0	0.00	0.00	0.00
40.0	0.00	0.00	40.0	0.0	0.0	0.0	0.00	0.00	0.00
80.0	0.00	0.00	80.0	0.0	0.0	0.0	0.00	0.00	0.00
120.0	0.00	0.00	120.0	0.0	0.0	0.0	0.00	0.00	0.00
160.0	0.00	0.00	160.0	0.0	0.0	0.0	0.00	0.00	0.00
200.0	0.00	0.00	200.0	0.0	0.0	0.0	0.00	0.00	0.00
240.0	0.80	180.00	240.0	-0.3	0.0	0.1	2.00	2.00	0.00
280.0	1.60	180.00	280.0	-1.1	0.0	0.5	2.00	2.00	0.00
320.0	2.40	180.00	320.0	-2.5	0.0	1.1	2.00	2.00	0.00
360.0	3.20	180.00	359.9	-4.5	0.0	1.9	2.00	2.00	0.00
400.0	4.00	180.00	399.8	-7.0	0.0	2.9	2.00	2.00	0.00
440.0	4.80	180.00	439.7	-10.0	0.0	4.2	2.00	2.00	0.00
450.0	5.00	180.00	449.7	-10.9	0.0	4.6	2.00	2.00	0.00
480.0	5.20	173.64	479.6	-13.6	0.2	5.8	2.00	0.68	-21.19
520.0	5.56	166.02	519.4	-17.2	0.8	8.0	2.00	0.90	-19.07
560.0	6.01	159.41	559.2	-21.1	2.0	10.7	2.00	1.11	-16.51
600.0	6.52	153.78	598.9	-25.1	3.8	14.0	2.00	1.28	-14.08
640.0	7.09	149.00	638.7	-29.2	6.0	17.8	2.00	1.42	-11.94
680.0	7.69	144.95	678.3	-33.5	8.8	22.1	2.00	1.52	-10.12
720.0	8.33	141.51	717.9	-38.0	12.2	27.1	2.00	1.60	-8.62
760.0	9.00	138.56	757.5	-42.6	16.1	32.5	2.00	1.66	-7.37
798.0	9.65	136.14	795.0	-47.1	20.2	38.2	2.00	1.71	-6.37
8 5/8"									
800.0	9.69	136.02	797.0	-47.4	20.5	38.5	2.00	1.73	-5.92
840.0	10.39	133.82	836.3	-52.3	25.4	45.1	2.00	1.75	-5.51
880.0	11.10	131.89	875.6	-57.4	30.9	52.2	2.00	1.79	-4.81
920.0	11.83	130.20	914.8	-62.6	36.9	59.8	2.00	1.81	-4.23
960.0	12.56	128.70	953.9	-68.0	43.4	68.0	2.00	1.84	-3.75
1,000.0	13.31	127.36	992.9	-73.5	50.5	76.7	2.00	1.86	-3.34
1,040.0	14.05	126.17	1,031.8	-79.1	58.0	86.0	2.00	1.87	-2.99
1,080.0	14.81	125.09	1,070.5	-84.9	66.1	95.8	2.00	1.88	-2.69
1,120.0	15.57	124.11	1,109.1	-90.9	74.8	106.1	2.00	1.90	-2.44
1,160.0	16.33	123.23	1,147.6	-97.0	83.9	116.9	2.00	1.91	-2.22
1,200.0	17.09	122.42	1,185.9	-103.2	93.6	128.3	2.00	1.91	-2.02
1,240.0	17.86	121.68	1,224.1	-109.6	103.8	140.3	2.00	1.92	-1.85
1,280.0	18.63	121.00	1,262.0	-116.1	114.5	152.7	2.00	1.93	-1.71
1,320.0	19.41	120.37	1,299.9	-122.7	125.7	165.7	2.00	1.93	-1.57
1,360.0	20.18	119.78	1,337.5	-129.5	137.4	179.2	2.00	1.94	-1.46
1,400.0	20.96	119.24	1,374.9	-136.4	149.6	193.2	2.00	1.94	-1.35
1,440.0	21.74	118.74	1,412.2	-143.5	162.4	207.7	2.00	1.95	-1.26
1,480.0	22.52	118.26	1,449.3	-150.7	175.6	222.7	2.00	1.95	-1.18
1,520.0	23.30	117.82	1,486.1	-158.0	189.3	238.3	2.00	1.95	-1.10
1,560.0	24.08	117.41	1,522.7	-165.5	203.6	254.3	2.00	1.96	-1.04
1,600.0	24.86	117.02	1,559.1	-173.0	218.3	270.9	2.00	1.96	-0.97
1,640.0	25.65	116.65	1,595.3	-180.7	233.5	287.9	2.00	1.96	-0.92
1,680.0	26.43	116.31	1,631.3	-188.6	249.3	305.5	2.00	1.96	-0.87
1,720.0	27.22	115.98	1,666.9	-196.5	265.5	323.5	2.00	1.97	-0.82
1,760.0	28.01	115.67	1,702.4	-204.6	282.2	342.1	2.00	1.97	-0.78
1,800.0	28.79	115.37	1,737.6	-212.8	299.3	361.1	2.00	1.97	-0.74
1,840.0	29.58	115.09	1,772.5	-221.1	317.0	380.6	2.00	1.97	-0.70
1,880.0	30.37	114.82	1,807.1	-229.5	335.1	400.6	2.00	1.97	-0.67
1,920.0	31.16	114.57	1,841.5	-238.1	353.7	421.1	2.00	1.97	-0.64
1,960.0	31.95	114.32	1,875.6	-246.7	372.7	442.0	2.00	1.97	-0.61
2,000.0	32.74	114.09	1,909.4	-255.5	392.3	463.4	2.00	1.98	-0.58

Database:	Landmark	Local Co-ordinate Reference:	Well Gilbert 17-22
Company:	Bayswater Exploration & Production, LLC	TVD Reference:	WELL @ 5067.0ft (RKB - 13')
Project:	SEC.15-T7N-R67W	MD Reference:	WELL @ 5067.0ft (RKB - 13')
Site:	MSH Farms 15-P Pad Sec.15-T7N-R67W	North Reference:	True
Well:	Gilbert 17-22	Survey Calculation Method:	Minimum Curvature
Wellbore:	Wellbore #1		
Design:	Plan #1 (12-27-13)		

Planned Survey									
Measured Depth (ft)	Inclination (°)	Azimuth (°)	Vertical Depth (ft)	+N/-S (ft)	+E/-W (ft)	Vertical Section (ft)	Dogleg Rate (°/100ft)	Build Rate (°/100ft)	Turn Rate (°/100ft)
2,040.0	33.53	113.86	1,942.9	-264.4	412.2	485.2	2.00	1.98	-0.56
2,080.0	34.32	113.65	1,976.1	-273.4	432.7	507.6	2.00	1.98	-0.54
2,120.0	35.11	113.44	2,009.0	-282.5	453.6	530.3	2.00	1.98	-0.52
2,147.5	35.66	113.31	2,031.4	-288.8	468.2	546.3	2.00	1.98	-0.50
2,160.0	35.66	113.31	2,041.5	-291.7	474.9	553.5	0.00	0.00	0.00
2,200.0	35.66	113.31	2,074.0	-300.9	496.3	576.8	0.00	0.00	0.00
2,240.0	35.66	113.31	2,106.5	-310.1	517.7	600.2	0.00	0.00	0.00
2,280.0	35.66	113.31	2,139.0	-319.4	539.1	623.5	0.00	0.00	0.00
2,320.0	35.66	113.31	2,171.5	-328.6	560.5	646.8	0.00	0.00	0.00
2,360.0	35.66	113.31	2,204.0	-337.8	581.9	670.1	0.00	0.00	0.00
2,400.0	35.66	113.31	2,236.5	-347.1	603.4	693.4	0.00	0.00	0.00
2,440.0	35.66	113.31	2,269.0	-356.3	624.8	716.7	0.00	0.00	0.00
2,480.0	35.66	113.31	2,301.5	-365.5	646.2	740.0	0.00	0.00	0.00
2,520.0	35.66	113.31	2,334.0	-374.7	667.6	763.3	0.00	0.00	0.00
2,560.0	35.66	113.31	2,366.5	-384.0	689.0	786.6	0.00	0.00	0.00
2,600.0	35.66	113.31	2,399.0	-393.2	710.4	809.9	0.00	0.00	0.00
2,640.0	35.66	113.31	2,431.5	-402.4	731.8	833.2	0.00	0.00	0.00
2,680.0	35.66	113.31	2,464.0	-411.6	753.3	856.6	0.00	0.00	0.00
2,720.0	35.66	113.31	2,496.5	-420.9	774.7	879.9	0.00	0.00	0.00
2,760.0	35.66	113.31	2,529.0	-430.1	796.1	903.2	0.00	0.00	0.00
2,800.0	35.66	113.31	2,561.5	-439.3	817.5	926.5	0.00	0.00	0.00
2,840.0	35.66	113.31	2,594.0	-448.5	838.9	949.8	0.00	0.00	0.00
2,880.0	35.66	113.31	2,626.5	-457.8	860.3	973.1	0.00	0.00	0.00
2,920.0	35.66	113.31	2,659.0	-467.0	881.7	996.4	0.00	0.00	0.00
2,960.0	35.66	113.31	2,691.5	-476.2	903.2	1,019.7	0.00	0.00	0.00
3,000.0	35.66	113.31	2,724.0	-485.4	924.6	1,043.0	0.00	0.00	0.00
3,040.0	35.66	113.31	2,756.5	-494.7	946.0	1,066.3	0.00	0.00	0.00
3,080.0	35.66	113.31	2,789.0	-503.9	967.4	1,089.6	0.00	0.00	0.00
3,120.0	35.66	113.31	2,821.5	-513.1	988.8	1,112.9	0.00	0.00	0.00
3,160.0	35.66	113.31	2,854.0	-522.3	1,010.2	1,136.3	0.00	0.00	0.00
3,200.0	35.66	113.31	2,886.5	-531.6	1,031.7	1,159.6	0.00	0.00	0.00
3,240.0	35.66	113.31	2,919.1	-540.8	1,053.1	1,182.9	0.00	0.00	0.00
3,280.0	35.66	113.31	2,951.6	-550.0	1,074.5	1,206.2	0.00	0.00	0.00
3,320.0	35.66	113.31	2,984.1	-559.2	1,095.9	1,229.5	0.00	0.00	0.00
3,360.0	35.66	113.31	3,016.6	-568.5	1,117.3	1,252.8	0.00	0.00	0.00
3,400.0	35.66	113.31	3,049.1	-577.7	1,138.7	1,276.1	0.00	0.00	0.00
3,440.0	35.66	113.31	3,081.6	-586.9	1,160.1	1,299.4	0.00	0.00	0.00
3,480.0	35.66	113.31	3,114.1	-596.2	1,181.6	1,322.7	0.00	0.00	0.00
3,520.0	35.66	113.31	3,146.6	-605.4	1,203.0	1,346.0	0.00	0.00	0.00
3,560.0	35.66	113.31	3,179.1	-614.6	1,224.4	1,369.3	0.00	0.00	0.00
3,600.0	35.66	113.31	3,211.6	-623.8	1,245.8	1,392.6	0.00	0.00	0.00
3,640.0	35.66	113.31	3,244.1	-633.1	1,267.2	1,416.0	0.00	0.00	0.00
3,680.0	35.66	113.31	3,276.6	-642.3	1,288.6	1,439.3	0.00	0.00	0.00
3,720.0	35.66	113.31	3,309.1	-651.5	1,310.0	1,462.6	0.00	0.00	0.00
3,760.0	35.66	113.31	3,341.6	-660.7	1,331.5	1,485.9	0.00	0.00	0.00
3,800.0	35.66	113.31	3,374.1	-670.0	1,352.9	1,509.2	0.00	0.00	0.00
3,840.0	35.66	113.31	3,406.6	-679.2	1,374.3	1,532.5	0.00	0.00	0.00
3,880.0	35.66	113.31	3,439.1	-688.4	1,395.7	1,555.8	0.00	0.00	0.00
3,920.0	35.66	113.31	3,471.6	-697.6	1,417.1	1,579.1	0.00	0.00	0.00
3,960.0	35.66	113.31	3,504.1	-706.9	1,438.5	1,602.4	0.00	0.00	0.00
4,000.0	35.66	113.31	3,536.6	-716.1	1,459.9	1,625.7	0.00	0.00	0.00
4,004.2	35.66	113.31	3,540.0	-717.1	1,462.2	1,628.2	0.00	0.00	0.00
PARKMAN									

Database:	Landmark	Local Co-ordinate Reference:	Well Gilbert 17-22
Company:	Bayswater Exploration & Production, LLC	TVD Reference:	WELL @ 5067.0ft (RKB - 13')
Project:	SEC.15-T7N-R67W	MD Reference:	WELL @ 5067.0ft (RKB - 13')
Site:	MSH Farms 15-P Pad Sec.15-T7N-R67W	North Reference:	True
Well:	Gilbert 17-22	Survey Calculation Method:	Minimum Curvature
Wellbore:	Wellbore #1		
Design:	Plan #1 (12-27-13)		

Planned Survey									
Measured Depth (ft)	Inclination (°)	Azimuth (°)	Vertical Depth (ft)	+N/-S (ft)	+E/-W (ft)	Vertical Section (ft)	Dogleg Rate (°/100ft)	Build Rate (°/100ft)	Turn Rate (°/100ft)
4,040.0	35.66	113.31	3,569.1	-725.3	1,481.4	1,649.0	0.00	0.00	0.00
4,080.0	35.66	113.31	3,601.6	-734.5	1,502.8	1,672.4	0.00	0.00	0.00
4,120.0	35.66	113.31	3,634.1	-743.8	1,524.2	1,695.7	0.00	0.00	0.00
4,160.0	35.66	113.31	3,666.6	-753.0	1,545.6	1,719.0	0.00	0.00	0.00
4,200.0	35.66	113.31	3,699.1	-762.2	1,567.0	1,742.3	0.00	0.00	0.00
4,240.0	35.66	113.31	3,731.6	-771.4	1,588.4	1,765.6	0.00	0.00	0.00
4,280.0	35.66	113.31	3,764.1	-780.7	1,609.8	1,788.9	0.00	0.00	0.00
4,320.0	35.66	113.31	3,796.6	-789.9	1,631.3	1,812.2	0.00	0.00	0.00
4,360.0	35.66	113.31	3,829.1	-799.1	1,652.7	1,835.5	0.00	0.00	0.00
4,400.0	35.66	113.31	3,861.6	-808.3	1,674.1	1,858.8	0.00	0.00	0.00
4,440.0	35.66	113.31	3,894.1	-817.6	1,695.5	1,882.1	0.00	0.00	0.00
4,480.0	35.66	113.31	3,926.6	-826.8	1,716.9	1,905.4	0.00	0.00	0.00
4,520.0	35.66	113.31	3,959.1	-836.0	1,738.3	1,928.7	0.00	0.00	0.00
4,560.0	35.66	113.31	3,991.6	-845.2	1,759.8	1,952.1	0.00	0.00	0.00
4,600.0	35.66	113.31	4,024.1	-854.5	1,781.2	1,975.4	0.00	0.00	0.00
4,640.0	35.66	113.31	4,056.6	-863.7	1,802.6	1,998.7	0.00	0.00	0.00
4,680.0	35.66	113.31	4,089.1	-872.9	1,824.0	2,022.0	0.00	0.00	0.00
4,720.0	35.66	113.31	4,121.6	-882.2	1,845.4	2,045.3	0.00	0.00	0.00
4,760.0	35.66	113.31	4,154.1	-891.4	1,866.8	2,068.6	0.00	0.00	0.00
4,800.0	35.66	113.31	4,186.6	-900.6	1,888.2	2,091.9	0.00	0.00	0.00
4,840.0	35.66	113.31	4,219.1	-909.8	1,909.7	2,115.2	0.00	0.00	0.00
4,880.0	35.66	113.31	4,251.6	-919.1	1,931.1	2,138.5	0.00	0.00	0.00
4,920.0	35.66	113.31	4,284.1	-928.3	1,952.5	2,161.8	0.00	0.00	0.00
4,932.2	35.66	113.31	4,294.0	-931.1	1,959.0	2,168.9	0.00	0.00	0.00
SUSSEX									
4,960.0	35.66	113.31	4,316.6	-937.5	1,973.9	2,185.1	0.00	0.00	0.00
5,000.0	35.66	113.31	4,349.1	-946.7	1,995.3	2,208.4	0.00	0.00	0.00
5,040.0	35.66	113.31	4,381.6	-956.0	2,016.7	2,231.8	0.00	0.00	0.00
5,080.0	35.66	113.31	4,414.1	-965.2	2,038.1	2,255.1	0.00	0.00	0.00
5,120.0	35.66	113.31	4,446.6	-974.4	2,059.6	2,278.4	0.00	0.00	0.00
5,160.0	35.66	113.31	4,479.1	-983.6	2,081.0	2,301.7	0.00	0.00	0.00
5,200.0	35.66	113.31	4,511.6	-992.9	2,102.4	2,325.0	0.00	0.00	0.00
5,222.7	35.66	113.31	4,530.0	-998.1	2,114.5	2,338.2	0.00	0.00	0.00
5,240.0	35.31	113.31	4,544.1	-1,002.1	2,123.8	2,348.3	2.00	-2.00	0.00
5,280.0	34.51	113.31	4,576.9	-1,011.1	2,144.8	2,371.1	2.00	-2.00	0.00
5,320.0	33.71	113.31	4,610.0	-1,020.0	2,165.4	2,393.6	2.00	-2.00	0.00
5,355.9	32.99	113.31	4,640.0	-1,027.8	2,183.5	2,413.3	2.00	-2.00	0.00
SHANNON									
5,360.0	32.91	113.31	4,643.5	-1,028.7	2,185.6	2,415.5	2.00	-2.00	0.00
5,400.0	32.11	113.31	4,677.2	-1,037.2	2,205.3	2,437.0	2.00	-2.00	0.00
5,440.0	31.31	113.31	4,711.2	-1,045.5	2,224.6	2,458.0	2.00	-2.00	0.00
5,480.0	30.51	113.31	4,745.5	-1,053.6	2,243.5	2,478.6	2.00	-2.00	0.00
5,520.0	29.71	113.31	4,780.1	-1,061.6	2,261.9	2,498.6	2.00	-2.00	0.00
5,560.0	28.91	113.31	4,815.0	-1,069.3	2,279.9	2,518.2	2.00	-2.00	0.00
5,600.0	28.11	113.31	4,850.2	-1,076.9	2,297.4	2,537.3	2.00	-2.00	0.00
5,640.0	27.31	113.31	4,885.6	-1,084.3	2,314.5	2,555.9	2.00	-2.00	0.00
5,680.0	26.51	113.31	4,921.2	-1,091.4	2,331.1	2,574.0	2.00	-2.00	0.00
5,720.0	25.71	113.31	4,957.2	-1,098.4	2,347.3	2,591.6	2.00	-2.00	0.00
5,760.0	24.91	113.31	4,993.3	-1,105.1	2,363.0	2,608.7	2.00	-2.00	0.00
5,800.0	24.11	113.31	5,029.7	-1,111.7	2,378.3	2,625.3	2.00	-2.00	0.00
5,840.0	23.31	113.31	5,066.3	-1,118.1	2,393.0	2,641.3	2.00	-2.00	0.00
5,880.0	22.51	113.31	5,103.2	-1,124.2	2,407.3	2,656.9	2.00	-2.00	0.00
5,920.0	21.71	113.31	5,140.2	-1,130.2	2,421.2	2,672.0	2.00	-2.00	0.00
5,960.0	20.91	113.31	5,177.5	-1,135.9	2,434.5	2,686.5	2.00	-2.00	0.00

Database:	Landmark	Local Co-ordinate Reference:	Well Gilbert 17-22
Company:	Bayswater Exploration & Production, LLC	TVD Reference:	WELL @ 5067.0ft (RKB - 13')
Project:	SEC.15-T7N-R67W	MD Reference:	WELL @ 5067.0ft (RKB - 13')
Site:	MSH Farms 15-P Pad Sec.15-T7N-R67W	North Reference:	True
Well:	Gilbert 17-22	Survey Calculation Method:	Minimum Curvature
Wellbore:	Wellbore #1		
Design:	Plan #1 (12-27-13)		

Planned Survey									
Measured Depth (ft)	Inclination (°)	Azimuth (°)	Vertical Depth (ft)	+N/-S (ft)	+E/-W (ft)	Vertical Section (ft)	Dogleg Rate (°/100ft)	Build Rate (°/100ft)	Turn Rate (°/100ft)
6,000.0	20.11	113.31	5,215.0	-1,141.5	2,447.4	2,700.5	2.00	-2.00	0.00
6,040.0	19.31	113.31	5,252.6	-1,146.8	2,459.8	2,714.0	2.00	-2.00	0.00
6,080.0	18.51	113.31	5,290.5	-1,152.0	2,471.7	2,726.9	2.00	-2.00	0.00
6,120.0	17.71	113.31	5,328.5	-1,156.9	2,483.1	2,739.4	2.00	-2.00	0.00
6,160.0	16.91	113.31	5,366.7	-1,161.6	2,494.0	2,751.3	2.00	-2.00	0.00
6,200.0	16.11	113.31	5,405.0	-1,166.1	2,504.5	2,762.6	2.00	-2.00	0.00
6,240.0	15.31	113.31	5,443.5	-1,170.4	2,514.4	2,773.5	2.00	-2.00	0.00
6,280.0	14.51	113.31	5,482.2	-1,174.4	2,523.9	2,783.7	2.00	-2.00	0.00
6,320.0	13.71	113.31	5,521.0	-1,178.3	2,532.8	2,793.5	2.00	-2.00	0.00
6,360.0	12.91	113.31	5,559.9	-1,181.9	2,541.3	2,802.7	2.00	-2.00	0.00
6,400.0	12.11	113.31	5,599.0	-1,185.4	2,549.2	2,811.4	2.00	-2.00	0.00
6,440.0	11.31	113.31	5,638.1	-1,188.6	2,556.7	2,819.5	2.00	-2.00	0.00
6,480.0	10.51	113.31	5,677.4	-1,191.6	2,563.7	2,827.0	2.00	-2.00	0.00
6,520.0	9.71	113.31	5,716.8	-1,194.4	2,570.1	2,834.1	2.00	-2.00	0.00
6,560.0	8.91	113.31	5,756.2	-1,196.9	2,576.0	2,840.5	2.00	-2.00	0.00
6,600.0	8.11	113.31	5,795.8	-1,199.3	2,581.5	2,846.4	2.00	-2.00	0.00
6,640.0	7.31	113.31	5,835.4	-1,201.4	2,586.4	2,851.8	2.00	-2.00	0.00
6,680.0	6.51	113.31	5,875.2	-1,203.3	2,590.8	2,856.6	2.00	-2.00	0.00
6,720.0	5.71	113.31	5,914.9	-1,205.0	2,594.7	2,860.9	2.00	-2.00	0.00
6,760.0	4.91	113.31	5,954.8	-1,206.4	2,598.1	2,864.6	2.00	-2.00	0.00
6,800.0	4.11	113.31	5,994.6	-1,207.7	2,601.0	2,867.7	2.00	-2.00	0.00
6,840.0	3.31	113.31	6,034.5	-1,208.7	2,603.4	2,870.3	2.00	-2.00	0.00
6,880.0	2.51	113.31	6,074.5	-1,209.5	2,605.3	2,872.3	2.00	-2.00	0.00
6,920.0	1.71	113.31	6,114.5	-1,210.1	2,606.6	2,873.8	2.00	-2.00	0.00
6,960.0	0.91	113.31	6,154.5	-1,210.5	2,607.5	2,874.7	2.00	-2.00	0.00
7,000.0	0.11	113.31	6,194.5	-1,210.6	2,607.8	2,875.1	2.00	-2.00	0.00
7,005.5	0.00	0.00	6,200.0	-1,210.6	2,607.8	2,875.1	2.00	-2.00	0.00
7,040.0	0.00	0.00	6,234.5	-1,210.6	2,607.8	2,875.1	0.00	0.00	0.00
7,080.0	0.00	0.00	6,274.5	-1,210.6	2,607.8	2,875.1	0.00	0.00	0.00
7,120.0	0.00	0.00	6,314.5	-1,210.6	2,607.8	2,875.1	0.00	0.00	0.00
7,160.0	0.00	0.00	6,354.5	-1,210.6	2,607.8	2,875.1	0.00	0.00	0.00
7,200.0	0.00	0.00	6,394.5	-1,210.6	2,607.8	2,875.1	0.00	0.00	0.00
7,240.0	0.00	0.00	6,434.5	-1,210.6	2,607.8	2,875.1	0.00	0.00	0.00
7,280.0	0.00	0.00	6,474.5	-1,210.6	2,607.8	2,875.1	0.00	0.00	0.00
7,320.0	0.00	0.00	6,514.5	-1,210.6	2,607.8	2,875.1	0.00	0.00	0.00
7,360.0	0.00	0.00	6,554.5	-1,210.6	2,607.8	2,875.1	0.00	0.00	0.00
7,400.0	0.00	0.00	6,594.5	-1,210.6	2,607.8	2,875.1	0.00	0.00	0.00
7,440.0	0.00	0.00	6,634.5	-1,210.6	2,607.8	2,875.1	0.00	0.00	0.00
7,480.0	0.00	0.00	6,674.5	-1,210.6	2,607.8	2,875.1	0.00	0.00	0.00
7,520.0	0.00	0.00	6,714.5	-1,210.6	2,607.8	2,875.1	0.00	0.00	0.00
7,560.0	0.00	0.00	6,754.5	-1,210.6	2,607.8	2,875.1	0.00	0.00	0.00
7,600.0	0.00	0.00	6,794.5	-1,210.6	2,607.8	2,875.1	0.00	0.00	0.00
7,640.0	0.00	0.00	6,834.5	-1,210.6	2,607.8	2,875.1	0.00	0.00	0.00
7,680.0	0.00	0.00	6,874.5	-1,210.6	2,607.8	2,875.1	0.00	0.00	0.00
7,720.0	0.00	0.00	6,914.5	-1,210.6	2,607.8	2,875.1	0.00	0.00	0.00
7,752.5	0.00	0.00	6,947.0	-1,210.6	2,607.8	2,875.1	0.00	0.00	0.00
NIORARA									
7,760.0	0.00	0.00	6,954.5	-1,210.6	2,607.8	2,875.1	0.00	0.00	0.00
7,800.0	0.00	0.00	6,994.5	-1,210.6	2,607.8	2,875.1	0.00	0.00	0.00
7,840.0	0.00	0.00	7,034.5	-1,210.6	2,607.8	2,875.1	0.00	0.00	0.00
7,880.0	0.00	0.00	7,074.5	-1,210.6	2,607.8	2,875.1	0.00	0.00	0.00
7,920.0	0.00	0.00	7,114.5	-1,210.6	2,607.8	2,875.1	0.00	0.00	0.00
7,960.0	0.00	0.00	7,154.5	-1,210.6	2,607.8	2,875.1	0.00	0.00	0.00
8,000.0	0.00	0.00	7,194.5	-1,210.6	2,607.8	2,875.1	0.00	0.00	0.00

Database:	Landmark	Local Co-ordinate Reference:	Well Gilbert 17-22
Company:	Bayswater Exploration & Production, LLC	TVD Reference:	WELL @ 5067.0ft (RKB - 13')
Project:	SEC.15-T7N-R67W	MD Reference:	WELL @ 5067.0ft (RKB - 13')
Site:	MSH Farms 15-P Pad Sec.15-T7N-R67W	North Reference:	True
Well:	Gilbert 17-22	Survey Calculation Method:	Minimum Curvature
Wellbore:	Wellbore #1		
Design:	Plan #1 (12-27-13)		

Planned Survey									
Measured Depth (ft)	Inclination (°)	Azimuth (°)	Vertical Depth (ft)	+N/-S (ft)	+E/-W (ft)	Vertical Section (ft)	Dogleg Rate (°/100ft)	Build Rate (°/100ft)	Turn Rate (°/100ft)
8,005.5	0.00	0.00	7,200.0	-1,210.6	2,607.8	2,875.1	0.00	0.00	0.00
FORT HAYS									
8,040.0	0.00	0.00	7,234.5	-1,210.6	2,607.8	2,875.1	0.00	0.00	0.00
8,052.5	0.00	0.00	7,247.0	-1,210.6	2,607.8	2,875.1	0.00	0.00	0.00
CODELL									
8,080.0	0.00	0.00	7,274.5	-1,210.6	2,607.8	2,875.1	0.00	0.00	0.00
8,102.5	0.00	0.00	7,297.0	-1,210.6	2,607.8	2,875.1	0.00	0.00	0.00
GREENHORN									
8,120.0	0.00	0.00	7,314.5	-1,210.6	2,607.8	2,875.1	0.00	0.00	0.00
8,160.0	0.00	0.00	7,354.5	-1,210.6	2,607.8	2,875.1	0.00	0.00	0.00
8,172.5	0.00	0.00	7,367.0	-1,210.6	2,607.8	2,875.1	0.00	0.00	0.00
GRANEROS									
8,200.0	0.00	0.00	7,394.5	-1,210.6	2,607.8	2,875.1	0.00	0.00	0.00
8,205.5	0.00	0.00	7,400.0	-1,210.6	2,607.8	2,875.1	0.00	0.00	0.00

Targets									
Target Name	Dip Angle (°)	Dip Dir. (°)	TVD (ft)	+N/-S (ft)	+E/-W (ft)	Northing (ft)	Easting (ft)	Latitude	Longitude
- hit/miss target									
- Shape									
SHL 207'FSL & 1011'I	0.00	0.00	1.0	0.0	0.0	1,450,183.31	3,170,809.77	40.567527	-104.885178
- plan hits target center									
- Point									
DRILL TARGET BHL	0.00	0.00	6,200.0	-1,210.6	2,607.8	1,448,990.85	3,173,425.83	40.564204	-104.875792
- plan hits target center									
- Point									
LEGAL BOX 800' X 800'	0.00	0.00	6,947.0	-1,535.6	2,932.8	1,448,668.12	3,173,753.06	40.563312	-104.874623
- plan misses target center by 459.6ft at 7752.5ft MD (6947.0 TVD, -1210.6 N, 2607.8 E)									
- Rectangle (sides W800.0 H800.0 D453.0)									
PERMIT TARGET BH	0.00	0.00	6,000.0	-1,184.6	2,577.8	1,449,016.61	3,173,395.68	40.564275	-104.875900
- plan misses target center by 33.0ft at 6803.4ft MD (5998.0 TVD, -1207.8 N, 2601.3 E)									
- Point									
TARGET CIRCLE 99'	0.00	0.00	6,947.0	-1,210.6	2,607.8	1,448,990.85	3,173,425.83	40.564204	-104.875792
- plan hits target center									
- Circle (radius 75.0)									

Casing Points					
Measured Depth (ft)	Vertical Depth (ft)	Name		Casing Diameter (")	Hole Diameter (")
798.0	795.0	8 5/8"		8-5/8	12-1/4

Database:	Landmark	Local Co-ordinate Reference:	Well Gilbert 17-22
Company:	Bayswater Exploration & Production, LLC	TVD Reference:	WELL @ 5067.0ft (RKB - 13')
Project:	SEC.15-T7N-R67W	MD Reference:	WELL @ 5067.0ft (RKB - 13')
Site:	MSH Farms 15-P Pad Sec.15-T7N-R67W	North Reference:	True
Well:	Gilbert 17-22	Survey Calculation Method:	Minimum Curvature
Wellbore:	Wellbore #1		
Design:	Plan #1 (12-27-13)		

Formations						
	Measured Depth (ft)	Vertical Depth (ft)	Name	Lithology	Dip (°)	Dip Direction (°)
	4,004.2	3,540.0	PARKMAN		0.00	
	4,932.2	4,294.0	SUSSEX		0.00	
	5,355.9	4,640.0	SHANNON		0.00	
	7,752.5	6,947.0	NIOBRARA		0.00	
	8,005.5	7,200.0	FORT HAYS		0.00	
	8,052.5	7,247.0	CODELL		0.00	
	8,102.5	7,297.0	GREENHORN		0.00	
	8,172.5	7,367.0	GRANEROS		0.00	



Bayswater Exploration & Production, LLC

SEC.15-T7N-R67W

MSH Farms 15-P Pad Sec.15-T7N-R67W

Gilbert 17-22

Wellbore #1

Plan #1 (12-27-13)

Anticollision Report

30 December, 2013



Company:	Bayswater Exploration & Production, LLC	Local Co-ordinate Reference:	Well Gilbert 17-22
Project:	SEC.15-T7N-R67W	TVD Reference:	WELL @ 5067.0ft (RKB - 13')
Reference Site:	MSH Farms 15-P Pad Sec.15-T7N-R67W	MD Reference:	WELL @ 5067.0ft (RKB - 13')
Site Error:	0.0ft	North Reference:	True
Reference Well:	Gilbert 17-22	Survey Calculation Method:	Minimum Curvature
Well Error:	0.0ft	Output errors are at	2.00 sigma
Reference Wellbore	Wellbore #1	Database:	Landmark
Reference Design:	Plan #1 (12-27-13)	Offset TVD Reference:	Offset Datum

Reference	Plan #1 (12-27-13)		
Filter type:	NO GLOBAL FILTER: Using user defined selection & filtering criteria		
Interpolation Method:	MD Interval 100.0ft	Error Model:	ISCWSA
Depth Range:	Unlimited	Scan Method:	Closest Approach 3D
Results Limited by:	Maximum center-center distance of 10,000.0ft	Error Surface:	Elliptical Conic
Warning Levels Evaluated at:	2.00 Sigma		

Survey Tool Program	Date 12/30/2013			
From (ft)	To (ft)	Survey (Wellbore)	Tool Name	Description
0.0	8,205.5	Plan #1 (12-27-13) (Wellbore #1)	MWD	MWD - Standard

Summary						
Site Name	Reference Measured Depth (ft)	Offset Measured Depth (ft)	Distance Between Centres (ft)	Distance Between Ellipses (ft)	Separation Factor	Warning
Offset Well - Wellbore - Design						
MSH Farms 15-P Pad Sec.15-T7N-R67W						
MSH Farms 12-15 - Wellbore #1 - Wellbore #1	0.0	3.0	30.3	30.3	8,319.380	CC
MSH Farms 12-15 - Wellbore #1 - Wellbore #1	216.4	219.6	30.6	29.8	39.477	ES
MSH Farms 12-15 - Wellbore #1 - Wellbore #1	400.0	401.3	38.2	36.6	23.175	SF
MSH Farms 13-15 - Wellbore #1 - Wellbore #1	354.9	358.0	12.7	11.3	9.574	CC, ES
MSH Farms 13-15 - Wellbore #1 - Wellbore #1	400.0	403.0	13.1	11.6	8.683	SF
MSH Farms 34-15 - Wellbore #1 - Plan #1 (12-27-13)	200.0	200.0	15.0	14.4	22.309	CC
MSH Farms 34-15 - Wellbore #1 - Plan #1 (12-27-13)	300.0	300.0	15.3	14.2	13.880	ES
MSH Farms 34-15 - Wellbore #1 - Plan #1 (12-27-13)	400.0	399.8	17.0	15.5	11.109	SF

MSH Farms 15-P Pad Sec.15-T7N-R67W - MSH Farms 12-15 - Wellbore #1 - Wellbore #1												Offset Site Error:	0.0 ft
Survey Program: 96-MWD												Offset Well Error:	0.0 ft
Reference		Offset		Semi Major Axis			Distance						Warning
Measured Depth	Vertical Depth	Measured Depth	Vertical Depth	Reference	Offset	Highside Toolface	Offset Wellbore Centre		Between Centres	Between Ellipses	Minimum Separation	Separation Factor	
(ft)	(ft)	(ft)	(ft)	(ft)	(ft)	(°)	+N/-S (ft)	+E/-W (ft)	(ft)	(ft)	(ft)		
0.0	0.0	3.0	3.0	0.0	0.0	93.43	-1.8	30.3	30.3	30.3	0.00	8,319.380	CC
100.0	100.0	102.9	102.9	0.1	0.1	90.19	-0.1	30.5	30.5	30.2	0.24	127.463	
200.0	200.0	203.1	203.0	0.3	0.4	82.00	4.3	30.3	30.6	29.9	0.70	43.656	
216.4	216.4	219.6	219.4	0.4	0.4	-99.92	5.2	30.1	30.6	29.8	0.77	39.477	ES
300.0	300.0	303.0	302.6	0.5	0.6	-114.72	11.4	28.5	31.4	30.2	1.16	27.094	
400.0	399.8	401.3	400.3	0.8	0.9	-138.05	21.5	25.4	38.2	36.6	1.65	23.175	SF
500.0	499.5	497.3	495.3	1.0	1.2	-146.38	34.9	21.6	55.0	52.9	2.15	25.620	
600.0	598.9	591.4	587.9	1.3	1.6	-142.24	51.1	18.1	78.8	76.1	2.62	30.029	
700.0	698.1	682.3	676.8	1.5	2.0	-139.60	69.7	14.3	108.3	105.2	3.10	34.960	
800.0	797.0	771.6	763.2	1.9	2.4	-138.58	91.5	9.1	144.1	140.5	3.58	40.267	
900.0	895.3	861.8	850.4	2.2	2.8	-138.16	114.2	3.8	183.1	179.0	4.06	45.055	
1,000.0	992.9	948.8	934.2	2.7	3.3	-137.79	137.0	-1.1	225.3	220.7	4.56	49.442	
1,100.0	1,089.8	1,033.8	1,015.8	3.1	3.8	-137.54	160.4	-5.6	270.8	265.7	5.08	53.317	
1,200.0	1,185.9	1,115.4	1,093.9	3.7	4.2	-137.44	183.7	-10.4	319.6	314.0	5.63	56.762	
1,300.0	1,281.0	1,190.0	1,164.8	4.3	4.7	-137.23	206.5	-15.3	372.4	366.2	6.22	59.883	
1,400.0	1,374.9	1,261.0	1,231.6	4.9	5.1	-136.96	229.8	-20.4	429.5	422.6	6.84	62.829	
1,500.0	1,467.7	1,328.1	1,294.2	5.7	5.6	-136.61	253.3	-25.7	490.5	483.0	7.50	65.427	
1,600.0	1,559.1	1,395.5	1,356.7	6.5	6.1	-136.28	278.0	-31.6	555.1	546.9	8.20	67.653	
1,700.0	1,649.1	1,462.9	1,418.8	7.4	6.6	-135.95	303.3	-37.6	622.3	613.4	8.96	69.443	
1,800.0	1,737.6	1,529.8	1,480.4	8.3	7.1	-135.60	328.9	-43.7	692.0	682.2	9.77	70.821	

CC - Min centre to center distance or convergent point, SF - min separation factor, ES - min ellipse separation

Company:	Bayswater Exploration & Production, LLC	Local Co-ordinate Reference:	Well Gilbert 17-22
Project:	SEC.15-T7N-R67W	TVD Reference:	WELL @ 5067.0ft (RKB - 13')
Reference Site:	MSH Farms 15-P Pad Sec.15-T7N-R67W	MD Reference:	WELL @ 5067.0ft (RKB - 13')
Site Error:	0.0ft	North Reference:	True
Reference Well:	Gilbert 17-22	Survey Calculation Method:	Minimum Curvature
Well Error:	0.0ft	Output errors are at	2.00 sigma
Reference Wellbore	Wellbore #1	Database:	Landmark
Reference Design:	Plan #1 (12-27-13)	Offset TVD Reference:	Offset Datum

Offset Design MSH Farms 15-P Pad Sec.15-T7N-R67W - MSH Farms 12-15 - Wellbore #1 - Wellbore #1												Offset Site Error:	0.0 ft
Survey Program: 96-MWD												Offset Well Error:	0.0 ft
Reference		Offset		Semi Major Axis			Distance						Warning
Measured Depth (ft)	Vertical Depth (ft)	Measured Depth (ft)	Vertical Depth (ft)	Reference (ft)	Offset (ft)	Highside Toolface (°)	Offset Wellbore Centre +N/-S (ft)	+E/-W (ft)	Between Centres (ft)	Between Ellipses (ft)	Minimum Separation (ft)	Separation Factor	
1,900.0	1,824.4	1,595.5	1,540.7	9.4	7.6	-135.19	354.1	-49.8	763.7	753.0	10.63	71.807	
2,000.0	1,909.4	1,654.8	1,595.0	10.5	8.1	-134.58	377.2	-55.3	837.4	825.9	11.57	72.381	
2,100.0	1,992.6	1,709.9	1,645.3	11.7	8.5	-133.80	399.0	-60.5	913.5	900.9	12.59	72.573	
2,200.0	2,074.0	1,770.8	1,700.8	13.0	9.0	-134.38	423.6	-66.3	991.4	977.9	13.56	73.141	
2,300.0	2,155.3	1,844.1	1,767.7	14.3	9.5	-136.19	452.6	-72.9	1,069.3	1,054.9	14.41	74.187	
2,400.0	2,236.5	1,920.4	1,837.9	15.6	10.0	-137.79	482.1	-79.2	1,146.6	1,131.3	15.27	75.102	
2,500.0	2,317.8	1,996.0	1,907.7	16.9	10.5	-139.16	510.4	-85.1	1,223.3	1,207.2	16.12	75.874	
2,600.0	2,399.0	2,054.0	1,961.4	18.2	10.9	-140.09	532.0	-89.4	1,299.9	1,282.9	17.01	76.430	
2,700.0	2,480.3	2,108.9	2,012.0	19.5	11.2	-140.86	552.7	-93.5	1,377.1	1,359.2	17.89	76.953	
2,800.0	2,561.5	2,171.3	2,069.5	20.9	11.7	-141.65	576.6	-98.1	1,454.5	1,435.7	18.79	77.416	
2,900.0	2,642.8	2,237.6	2,130.5	22.2	12.2	-142.38	602.0	-102.8	1,532.0	1,512.3	19.69	77.813	
3,000.0	2,724.0	2,298.7	2,186.8	23.5	12.6	-142.99	625.5	-107.0	1,609.4	1,588.8	20.59	78.181	
3,100.0	2,805.3	2,357.9	2,241.3	24.9	13.0	-143.53	648.2	-111.2	1,687.0	1,665.5	21.48	78.537	
3,200.0	2,886.5	2,411.9	2,291.0	26.2	13.4	-143.99	668.9	-115.1	1,764.8	1,742.4	22.37	78.884	
3,300.0	2,967.8	2,462.0	2,337.0	27.5	13.8	-144.39	688.4	-119.0	1,843.1	1,819.8	23.26	79.235	
3,400.0	3,049.1	2,509.0	2,380.1	28.9	14.1	-144.75	706.8	-123.0	1,921.8	1,897.6	24.14	79.594	
3,500.0	3,130.3	2,557.5	2,424.4	30.2	14.5	-145.08	726.0	-127.1	2,000.9	1,975.9	25.03	79.926	
3,600.0	3,211.6	2,603.1	2,465.9	31.6	14.9	-145.37	744.6	-131.0	2,080.5	2,054.6	25.92	80.256	
3,700.0	3,292.8	2,651.5	2,509.8	32.9	15.3	-145.64	764.6	-135.2	2,160.6	2,133.7	26.82	80.567	
3,800.0	3,374.1	2,712.5	2,564.9	34.3	15.7	-145.96	790.0	-140.4	2,240.7	2,213.0	27.72	80.829	
3,900.0	3,455.3	2,777.7	2,624.0	35.6	16.2	-146.27	817.1	-145.9	2,320.9	2,292.2	28.63	81.067	
4,000.0	3,536.6	2,875.3	2,713.0	37.0	16.9	-146.76	856.2	-154.6	2,400.4	2,370.9	29.54	81.252	
4,100.0	3,617.8	3,009.7	2,837.3	38.3	17.8	-147.46	906.0	-166.8	2,478.7	2,448.2	30.46	81.388	
4,200.0	3,699.1	3,095.2	2,917.0	39.7	18.4	-147.88	936.1	-173.9	2,555.7	2,524.3	31.34	81.547	
4,300.0	3,780.3	3,196.4	3,011.4	41.0	19.0	-148.30	971.8	-180.8	2,632.1	2,599.9	32.26	81.594	
4,400.0	3,861.6	3,304.0	3,112.5	42.3	19.7	-148.74	1,007.9	-187.3	2,707.2	2,674.0	33.19	81.568	
4,500.0	3,942.8	3,360.7	3,165.9	43.7	20.0	-148.95	1,026.9	-190.4	2,782.2	2,748.1	34.06	81.678	
4,600.0	4,024.1	3,417.9	3,219.6	45.0	20.4	-149.14	1,046.4	-193.5	2,857.4	2,822.5	34.94	81.783	
4,700.0	4,105.3	3,478.5	3,276.5	46.4	20.8	-149.35	1,066.8	-197.3	2,932.8	2,897.0	35.81	81.895	
4,800.0	4,186.6	3,535.0	3,329.8	47.7	21.1	-149.56	1,085.2	-201.4	3,008.3	2,971.6	36.67	82.043	
4,900.0	4,267.8	3,572.0	3,364.6	49.1	21.4	-149.70	1,097.4	-204.4	3,084.2	3,046.7	37.49	82.256	
5,000.0	4,349.1	3,606.1	3,396.5	50.4	21.6	-149.81	1,109.1	-207.2	3,160.7	3,122.4	38.32	82.480	
5,100.0	4,430.3	3,663.0	3,449.4	51.8	22.0	-149.98	1,129.4	-211.8	3,238.1	3,198.9	39.18	82.638	
5,200.0	4,511.6	3,677.8	3,463.1	53.1	22.1	-150.02	1,134.8	-213.0	3,315.7	3,275.7	39.99	82.920	
5,300.0	4,593.4	3,730.0	3,511.5	54.4	22.5	-151.07	1,154.0	-217.5	3,393.2	3,352.5	40.66	83.448	
5,400.0	4,677.2	3,792.0	3,568.9	55.5	22.9	-152.27	1,176.8	-223.0	3,469.0	3,427.7	41.30	84.003	
5,500.0	4,762.8	3,792.0	3,568.9	56.5	22.9	-153.29	1,176.8	-223.0	3,543.3	3,501.5	41.77	84.835	
5,600.0	4,850.2	3,854.3	3,626.3	57.4	23.4	-154.25	1,200.3	-228.9	3,615.7	3,573.3	42.42	85.239	
5,700.0	4,939.2	3,920.0	3,686.3	58.3	23.9	-155.08	1,226.2	-235.7	3,687.1	3,644.0	43.09	85.564	
5,800.0	5,029.7	3,920.0	3,686.3	59.1	23.9	-155.88	1,226.2	-235.7	3,756.5	3,713.0	43.48	86.387	
5,900.0	5,121.7	3,963.8	3,726.1	59.8	24.3	-156.57	1,243.9	-240.4	3,824.4	3,780.4	44.03	86.853	
6,000.0	5,215.0	4,004.4	3,762.8	60.4	24.6	-157.20	1,260.6	-245.1	3,890.7	3,846.1	44.54	87.354	
6,100.0	5,309.5	4,048.0	3,802.0	61.0	24.9	-157.77	1,278.8	-250.4	3,955.2	3,910.1	45.03	87.840	
6,200.0	5,405.0	4,500.4	4,218.1	61.5	28.2	-157.53	1,450.5	-293.4	4,011.3	3,963.9	47.42	84.586	
6,300.0	5,501.6	4,824.0	4,523.5	62.0	30.1	-157.46	1,555.8	-311.4	4,061.0	4,011.9	49.14	82.645	
6,400.0	5,599.0	5,769.6	5,451.3	62.4	33.4	-157.64	1,713.1	-344.8	4,098.7	4,046.9	51.80	79.131	
6,500.0	5,697.1	5,871.2	5,552.8	62.7	33.5	-157.87	1,717.9	-345.2	4,120.1	4,067.9	52.19	78.938	
6,600.0	5,795.8	5,976.1	5,657.5	63.0	33.7	-158.06	1,722.4	-345.8	4,138.3	4,085.7	52.53	78.773	
6,700.0	5,895.0	6,083.2	5,764.5	63.2	33.8	-158.20	1,726.8	-346.5	4,153.1	4,100.3	52.82	78.629	
6,800.0	5,994.6	6,194.6	5,875.9	63.4	34.0	-158.31	1,730.8	-347.4	4,164.4	4,111.4	53.05	78.502	
6,900.0	6,094.5	6,302.6	5,983.9	63.5	34.1	-158.37	1,734.3	-348.2	4,172.3	4,119.0	53.22	78.399	
7,000.0	6,194.5	6,410.2	6,091.4	63.5	34.3	-158.39	1,737.6	-348.8	4,176.7	4,123.4	53.34	78.309	

CC - Min centre to center distance or convergent point, SF - min separation factor, ES - min ellipse separation

Company:	Bayswater Exploration & Production, LLC	Local Co-ordinate Reference:	Well Gilbert 17-22
Project:	SEC.15-T7N-R67W	TVD Reference:	WELL @ 5067.0ft (RKB - 13')
Reference Site:	MSH Farms 15-P Pad Sec.15-T7N-R67W	MD Reference:	WELL @ 5067.0ft (RKB - 13')
Site Error:	0.0ft	North Reference:	True
Reference Well:	Gilbert 17-22	Survey Calculation Method:	Minimum Curvature
Well Error:	0.0ft	Output errors are at	2.00 sigma
Reference Wellbore	Wellbore #1	Database:	Landmark
Reference Design:	Plan #1 (12-27-13)	Offset TVD Reference:	Offset Datum

Offset Design MSH Farms 15-P Pad Sec.15-T7N-R67W - MSH Farms 12-15 - Wellbore #1 - Wellbore #1												Offset Site Error:	0.0 ft
Survey Program: 96-MWD												Offset Well Error:	0.0 ft
Reference		Offset		Semi Major Axis			Distance						
Measured Depth (ft)	Vertical Depth (ft)	Measured Depth (ft)	Vertical Depth (ft)	Reference (ft)	Offset (ft)	Highside Toolface (°)	Offset Wellbore Centre +N/-S (ft)	+E/-W (ft)	Between Centres (ft)	Between Ellipses (ft)	Minimum Separation (ft)	Separation Factor	Warning
7,100.0	6,294.5	6,524.9	6,206.0	63.6	34.4	-45.05	1,740.9	-349.4	4,179.1	4,125.5	53.58	77.995	
7,200.0	6,394.5	6,625.1	6,306.2	63.6	34.5	-45.03	1,743.6	-349.7	4,181.2	4,127.4	53.81	77.698	
7,300.0	6,494.5	6,716.2	6,397.3	63.7	34.6	-45.01	1,746.0	-350.3	4,183.5	4,129.4	54.03	77.425	
7,400.0	6,594.5	6,815.9	6,496.9	63.7	34.8	-45.00	1,748.7	-351.0	4,185.9	4,131.6	54.27	77.138	
7,500.0	6,694.5	6,919.3	6,600.3	63.8	34.9	-44.97	1,751.5	-351.7	4,188.3	4,133.8	54.51	76.841	
7,600.0	6,794.5	7,033.5	6,714.4	63.8	35.0	-44.95	1,754.3	-352.3	4,190.4	4,135.7	54.76	76.520	
7,700.0	6,894.5	7,082.0	6,762.9	63.9	35.1	-44.95	1,755.3	-352.6	4,192.7	4,137.8	54.92	76.336	
7,800.0	6,994.5	7,166.0	6,846.9	63.9	35.2	-44.95	1,756.9	-354.2	4,195.5	4,140.4	55.12	76.120	
7,900.0	7,094.5	7,253.0	6,933.8	64.0	35.3	-44.97	1,758.6	-358.1	4,199.9	4,144.6	55.31	75.939	
8,000.0	7,194.5	7,253.0	6,933.8	64.0	35.3	-44.97	1,758.6	-358.1	4,205.0	4,149.6	55.40	75.899	
8,100.0	7,294.5	7,339.5	7,020.1	64.1	35.4	-45.00	1,760.4	-363.6	4,211.0	4,155.5	55.57	75.774	
8,200.0	7,394.5	7,424.0	7,104.3	64.1	35.6	-45.04	1,762.6	-370.0	4,218.1	4,162.4	55.74	75.671	
8,205.5	7,400.0	7,424.0	7,104.3	64.1	35.6	-45.04	1,762.6	-370.0	4,218.5	4,162.8	55.75	75.671	

Company:	Bayswater Exploration & Production, LLC	Local Co-ordinate Reference:	Well Gilbert 17-22
Project:	SEC.15-T7N-R67W	TVD Reference:	WELL @ 5067.0ft (RKB - 13')
Reference Site:	MSH Farms 15-P Pad Sec.15-T7N-R67W	MD Reference:	WELL @ 5067.0ft (RKB - 13')
Site Error:	0.0ft	North Reference:	True
Reference Well:	Gilbert 17-22	Survey Calculation Method:	Minimum Curvature
Well Error:	0.0ft	Output errors are at	2.00 sigma
Reference Wellbore	Wellbore #1	Database:	Landmark
Reference Design:	Plan #1 (12-27-13)	Offset TVD Reference:	Offset Datum

Offset Design MSH Farms 15-P Pad Sec.15-T7N-R67W - MSH Farms 13-15 - Wellbore #1 - Wellbore #1												Offset Site Error:	0.0 ft
Survey Program: 96-MWD												Offset Well Error:	0.0 ft
Reference	Offset	Semi Major Axis		Distance		Warning							
Measured Depth (ft)	Vertical Depth (ft)	Measured Depth (ft)	Vertical Depth (ft)	Reference (ft)	Offset (ft)	Highside Toolface (°)	Offset Wellbore Centre +N/-S (ft)	+E/-W (ft)	Between Centres (ft)	Between Ellipses (ft)	Minimum Separation (ft)	Separation Factor	
0.0	0.0	3.0	3.0	0.0	0.0	96.83	-1.8	15.3	15.4	15.4	0.00	4,313.283	
100.0	100.0	103.1	103.1	0.1	0.1	96.08	-1.6	15.1	15.2	14.9	0.24	64.375	
200.0	200.0	203.2	203.2	0.3	0.3	95.42	-1.3	14.2	14.3	13.6	0.68	21.022	
300.0	300.0	303.2	303.1	0.5	0.6	-92.53	-1.2	13.0	13.0	11.9	1.09	11.910	
354.9	354.9	358.0	358.0	0.7	0.7	-104.09	-1.1	12.3	12.7	11.3	1.32	9.574 CC, ES	
400.0	399.8	403.0	403.0	0.8	0.8	-116.74	-1.1	11.7	13.1	11.6	1.51	8.683 SF	
500.0	499.5	502.7	502.6	1.0	1.0	-133.97	-1.1	10.7	17.6	15.6	1.94	9.064	
600.0	598.9	602.0	602.0	1.3	1.2	-140.84	-1.3	9.2	24.4	22.0	2.37	10.285	
700.0	698.1	700.8	700.7	1.5	1.4	-148.27	-0.6	7.1	35.3	32.5	2.82	12.520	
800.0	797.0	799.1	799.0	1.9	1.6	-153.88	0.5	4.7	50.4	47.1	3.27	15.422	
900.0	895.3	896.5	896.4	2.2	1.8	-157.56	1.9	2.2	69.4	65.7	3.72	18.681	
1,000.0	992.9	992.7	992.5	2.7	2.0	-160.10	3.8	-0.5	92.6	88.5	4.17	22.221	
1,100.0	1,089.8	1,087.2	1,086.9	3.1	2.3	-161.74	6.7	-3.5	120.2	115.6	4.63	25.978	
1,200.0	1,185.9	1,180.0	1,179.5	3.7	2.5	-162.84	10.6	-6.9	152.1	147.0	5.09	29.907	
1,300.0	1,281.0	1,269.7	1,269.0	4.3	2.7	-163.66	15.2	-11.1	188.4	182.9	5.54	33.984	
1,400.0	1,374.9	1,355.0	1,354.0	4.9	2.9	-164.09	21.1	-16.1	229.9	223.9	6.00	38.288	
1,500.0	1,467.7	1,441.0	1,439.5	5.7	3.1	-164.39	28.3	-22.0	275.9	269.4	6.47	42.624	
1,600.0	1,559.1	1,523.6	1,521.5	6.5	3.4	-164.57	35.9	-28.4	325.9	318.9	6.94	46.945	
1,700.0	1,649.1	1,603.2	1,600.4	7.4	3.6	-164.60	44.2	-35.0	379.7	372.3	7.41	51.219	
1,800.0	1,737.6	1,680.9	1,677.2	8.3	3.8	-164.54	53.0	-42.0	437.2	429.3	7.89	55.388	
1,900.0	1,824.4	1,755.3	1,750.8	9.4	4.1	-164.40	62.1	-49.0	498.1	489.7	8.39	59.401	
2,000.0	1,909.4	1,825.0	1,819.5	10.5	4.3	-164.15	71.3	-56.0	562.5	553.6	8.89	63.277	
2,100.0	1,992.6	1,893.2	1,886.6	11.7	4.5	-163.84	81.0	-63.3	630.2	620.7	9.41	66.939	
2,200.0	2,074.0	1,962.2	1,954.5	13.0	4.8	-164.20	90.7	-71.1	700.3	690.3	9.97	70.272	
2,300.0	2,155.3	2,035.0	2,026.1	14.3	5.0	-165.07	100.9	-79.6	770.8	760.3	10.53	73.197	
2,400.0	2,236.5	2,113.3	2,103.1	15.6	5.2	-165.79	111.8	-88.0	840.9	829.8	11.10	75.725	
2,500.0	2,317.8	2,180.9	2,169.8	16.9	5.5	-166.29	121.3	-94.9	910.8	899.1	11.68	77.949	
2,600.0	2,399.0	2,245.9	2,233.6	18.2	5.7	-166.70	130.8	-101.8	981.1	968.8	12.26	79.994	
2,700.0	2,480.3	2,311.0	2,297.6	19.5	5.9	-167.06	140.5	-109.0	1,051.9	1,039.0	12.86	81.804	
2,800.0	2,561.5	2,375.6	2,361.1	20.9	6.2	-167.38	150.2	-116.5	1,123.1	1,109.6	13.45	83.475	
2,900.0	2,642.8	2,442.4	2,426.6	22.2	6.4	-167.69	160.3	-124.5	1,194.5	1,180.5	14.05	85.018	
3,000.0	2,724.0	2,509.0	2,491.9	23.5	6.7	-167.98	170.1	-132.8	1,266.2	1,251.5	14.64	86.461	
3,100.0	2,805.3	2,570.5	2,552.2	24.9	6.9	-168.22	179.4	-140.7	1,338.1	1,322.9	15.24	87.825	
3,200.0	2,886.5	2,638.0	2,618.3	26.2	7.2	-168.45	189.9	-149.7	1,410.5	1,394.7	15.84	89.061	
3,300.0	2,967.8	2,710.0	2,688.8	27.5	7.5	-168.67	201.1	-159.2	1,482.9	1,466.5	16.44	90.190	
3,400.0	3,049.1	2,790.1	2,767.4	28.9	7.8	-168.90	213.1	-169.3	1,554.8	1,537.7	17.06	91.161	
3,500.0	3,130.3	2,865.9	2,841.7	30.2	8.1	-169.09	224.5	-178.4	1,626.3	1,608.6	17.66	92.078	
3,600.0	3,211.6	2,940.6	2,915.1	31.6	8.3	-169.24	235.8	-187.1	1,697.6	1,679.3	18.27	92.900	
3,700.0	3,292.8	3,014.7	2,987.8	32.9	8.6	-169.39	246.7	-195.6	1,768.7	1,749.8	18.88	93.658	
3,800.0	3,374.1	3,088.5	3,060.3	34.3	8.9	-169.53	257.3	-204.1	1,839.7	1,820.2	19.50	94.363	
3,900.0	3,455.3	3,162.6	3,133.2	35.6	9.1	-169.68	267.7	-212.7	1,910.6	1,890.4	20.11	95.019	
4,000.0	3,536.6	3,238.1	3,207.4	37.0	9.4	-169.80	278.6	-221.0	1,981.3	1,960.5	20.73	95.577	
4,100.0	3,617.8	3,315.7	3,283.8	38.3	9.7	-169.88	290.4	-229.0	2,051.8	2,030.4	21.36	96.046	
4,200.0	3,699.1	3,396.0	3,362.8	39.7	10.0	-169.96	302.4	-237.0	2,122.0	2,100.0	22.00	96.444	
4,300.0	3,780.3	3,463.8	3,429.4	41.0	10.2	-170.02	312.5	-243.6	2,192.1	2,169.5	22.63	96.886	
4,400.0	3,861.6	3,529.2	3,493.8	42.3	10.5	-170.07	322.4	-250.1	2,262.4	2,239.2	23.25	97.323	
4,500.0	3,942.8	3,586.3	3,549.9	43.7	10.7	-170.11	331.2	-255.9	2,333.0	2,309.1	23.86	97.780	
4,600.0	4,024.1	3,642.0	3,604.6	45.0	10.9	-170.15	340.0	-261.9	2,404.0	2,379.5	24.47	98.239	
4,700.0	4,105.3	3,694.0	3,655.6	46.4	11.1	-170.18	348.4	-267.7	2,475.5	2,450.4	25.08	98.713	
4,800.0	4,186.6	3,743.4	3,703.9	47.7	11.3	-170.21	356.7	-273.5	2,547.5	2,521.8	25.68	99.197	
4,900.0	4,267.8	3,792.0	3,751.4	49.1	11.5	-170.23	365.1	-279.5	2,620.1	2,593.8	26.28	99.684	
5,000.0	4,349.1	3,846.9	3,805.0	50.4	11.8	-170.25	374.9	-286.5	2,693.1	2,666.2	26.90	100.106	

CC - Min centre to center distance or convergent point, SF - min separation factor, ES - min ellipse separation

Company:	Bayswater Exploration & Production, LLC	Local Co-ordinate Reference:	Well Gilbert 17-22
Project:	SEC.15-T7N-R67W	TVD Reference:	WELL @ 5067.0ft (RKB - 13')
Reference Site:	MSH Farms 15-P Pad Sec.15-T7N-R67W	MD Reference:	WELL @ 5067.0ft (RKB - 13')
Site Error:	0.0ft	North Reference:	True
Reference Well:	Gilbert 17-22	Survey Calculation Method:	Minimum Curvature
Well Error:	0.0ft	Output errors are at	2.00 sigma
Reference Wellbore	Wellbore #1	Database:	Landmark
Reference Design:	Plan #1 (12-27-13)	Offset TVD Reference:	Offset Datum

Offset Design MSH Farms 15-P Pad Sec.15-T7N-R67W - MSH Farms 13-15 - Wellbore #1 - Wellbore #1													Offset Site Error:	0.0 ft
Survey Program: 96-MWD													Offset Well Error:	0.0 ft
Reference		Offset		Semi Major Axis			Distance							Warning
Measured Depth (ft)	Vertical Depth (ft)	Measured Depth (ft)	Vertical Depth (ft)	Reference (ft)	Offset (ft)	Highside Toolface (°)	Offset Wellbore Centre +N/-S (ft)	+E/-W (ft)	Between Centres (ft)	Between Ellipses (ft)	Minimum Separation (ft)	Separation Factor		
5,100.0	4,430.3	3,901.2	3,857.9	51.8	12.0	-170.26	384.8	-293.6	2,766.5	2,738.9	27.52	100.522		
5,200.0	4,511.6	4,003.5	3,957.6	53.1	12.5	-170.27	403.8	-306.6	2,839.8	2,811.5	28.23	100.585		
5,300.0	4,593.4	4,138.9	4,090.1	54.4	13.0	-170.55	427.1	-322.0	2,911.0	2,881.9	29.08	100.101		
5,400.0	4,677.2	4,273.2	4,222.2	55.5	13.5	-170.91	446.4	-336.1	2,978.2	2,948.3	29.90	99.596		
5,500.0	4,762.8	4,731.0	4,677.8	56.5	14.6	-171.68	475.3	-360.7	3,031.1	3,000.0	31.13	97.358		
5,600.0	4,850.2	4,837.6	4,784.4	57.4	14.8	-171.98	477.6	-362.5	3,081.6	3,049.8	31.82	96.832		
5,700.0	4,939.2	4,934.6	4,881.4	58.3	14.9	-172.24	479.2	-363.8	3,128.6	3,096.1	32.46	96.378		
5,800.0	5,029.7	5,014.5	4,961.2	59.1	15.1	-172.45	480.5	-365.0	3,172.6	3,139.6	33.03	96.050		
5,900.0	5,121.7	5,096.7	5,043.4	59.8	15.2	-172.64	482.1	-366.3	3,213.8	3,180.2	33.56	95.763		
6,000.0	5,215.0	5,183.6	5,130.3	60.4	15.4	-172.81	483.9	-367.9	3,252.0	3,217.9	34.06	95.492		
6,100.0	5,309.5	5,279.3	5,225.9	61.0	15.6	-172.96	485.9	-369.8	3,287.1	3,252.6	34.51	95.238		
6,200.0	5,405.0	5,394.0	5,340.6	61.5	15.8	-173.10	487.6	-371.9	3,318.5	3,283.6	34.95	94.948		
6,300.0	5,501.6	5,488.9	5,435.5	62.0	15.9	-173.23	488.5	-373.6	3,346.3	3,311.0	35.30	94.801		
6,400.0	5,599.0	5,579.6	5,526.2	62.4	16.1	-173.33	489.3	-375.3	3,371.0	3,335.4	35.59	94.730		
6,500.0	5,697.1	5,663.7	5,610.3	62.7	16.2	-173.42	490.3	-377.1	3,392.5	3,356.7	35.81	94.726		
6,600.0	5,795.8	5,758.0	5,704.5	63.0	16.4	-173.48	491.8	-379.4	3,411.1	3,375.1	36.01	94.727		
6,700.0	5,895.0	5,916.6	5,863.1	63.2	16.7	-173.55	493.6	-382.2	3,425.5	3,389.3	36.27	94.457		
6,800.0	5,994.6	6,005.3	5,951.8	63.4	16.8	-173.59	494.0	-383.0	3,435.5	3,399.1	36.34	94.547		
6,900.0	6,094.5	6,099.0	6,045.5	63.5	17.0	-173.62	494.7	-384.4	3,442.5	3,406.1	36.36	94.673		
7,000.0	6,194.5	6,182.0	6,128.5	63.5	17.2	-173.63	495.4	-385.8	3,446.3	3,410.0	36.32	94.878		
7,100.0	6,294.5	6,278.7	6,225.1	63.6	17.3	-60.32	496.3	-387.6	3,448.4	3,411.8	36.61	94.204		
7,200.0	6,394.5	6,375.2	6,321.6	63.6	17.5	-60.33	497.2	-389.5	3,450.5	3,413.6	36.91	93.494		
7,300.0	6,494.5	6,470.9	6,417.2	63.7	17.7	-60.33	498.2	-391.4	3,452.8	3,415.6	37.21	92.797		
7,400.0	6,594.5	6,564.6	6,511.0	63.7	17.9	-60.33	499.1	-393.5	3,455.2	3,417.7	37.51	92.120		
7,500.0	6,694.5	6,661.8	6,608.1	63.8	18.0	-60.34	500.0	-395.9	3,457.8	3,420.0	37.81	91.447		
7,600.0	6,794.5	6,762.3	6,708.6	63.8	18.2	-60.36	500.4	-398.6	3,460.3	3,422.2	38.12	90.777		
7,700.0	6,894.5	6,833.5	6,779.7	63.9	18.4	-60.37	500.4	-401.0	3,463.2	3,424.9	38.37	90.257		
7,800.0	6,994.5	6,897.0	6,843.2	63.9	18.5	-60.40	500.5	-403.8	3,467.2	3,428.6	38.61	89.804		
7,900.0	7,094.5	6,963.4	6,909.5	64.0	18.6	-60.43	500.6	-407.5	3,472.1	3,433.3	38.85	89.367		
8,000.0	7,194.5	7,056.5	7,002.4	64.0	18.8	-60.46	501.5	-412.9	3,477.6	3,438.5	39.16	88.814		
8,100.0	7,294.5	7,154.2	7,100.0	64.1	19.0	-60.47	503.7	-418.0	3,483.3	3,443.9	39.48	88.239		
8,200.0	7,394.5	7,265.0	7,210.6	64.1	19.3	-60.46	507.2	-423.1	3,488.8	3,449.0	39.83	87.592		
8,205.5	7,400.0	7,271.2	7,216.7	64.1	19.3	-60.46	507.4	-423.3	3,489.1	3,449.3	39.85	87.556		

Company:	Bayswater Exploration & Production, LLC	Local Co-ordinate Reference:	Well Gilbert 17-22
Project:	SEC.15-T7N-R67W	TVD Reference:	WELL @ 5067.0ft (RKB - 13')
Reference Site:	MSH Farms 15-P Pad Sec.15-T7N-R67W	MD Reference:	WELL @ 5067.0ft (RKB - 13')
Site Error:	0.0ft	North Reference:	True
Reference Well:	Gilbert 17-22	Survey Calculation Method:	Minimum Curvature
Well Error:	0.0ft	Output errors are at	2.00 sigma
Reference Wellbore	Wellbore #1	Database:	Landmark
Reference Design:	Plan #1 (12-27-13)	Offset TVD Reference:	Offset Datum

Offset Design MSH Farms 15-P Pad Sec.15-T7N-R67W - MSH Farms 34-15 - Wellbore #1 - Plan #1 (12-27-13)													Offset Site Error:	0.0 ft
Survey Program: 0-MWD													Offset Well Error:	0.0 ft
Measured Depth (ft)	Vertical Depth (ft)	Measured Depth (ft)	Vertical Depth (ft)	Reference (ft)	Offset (ft)	Highside Toolface (°)	Offset Wellbore Centre +N/-S (ft)	+E/-W (ft)	Between Centres (ft)	Between Ellipses (ft)	Minimum Separation (ft)	Separation Factor	Warning	
0.0	0.0	0.0	0.0	0.0	0.0	-85.83	1.1	-15.0	15.0	15.0	0.00	N/A		
100.0	100.0	100.0	100.0	0.1	0.1	-85.83	1.1	-15.0	15.0	14.8	0.22	66.926		
200.0	200.0	200.0	200.0	0.3	0.3	-85.83	1.1	-15.0	15.0	14.4	0.67	22.309 CC		
300.0	300.0	300.0	300.0	0.5	0.6	100.71	1.1	-15.0	15.3	14.2	1.10	13.880 ES		
400.0	399.8	399.8	399.8	0.8	0.8	118.22	1.1	-15.0	17.0	15.5	1.53	11.109 SF		
500.0	499.5	499.5	499.5	1.0	1.0	147.08	1.1	-15.0	22.6	20.6	1.99	11.334		
600.0	598.9	598.9	598.9	1.3	1.2	170.52	1.1	-15.0	32.2	29.8	2.44	13.192		
700.0	698.1	697.5	697.4	1.5	1.4	-179.68	0.8	-16.6	45.5	42.6	2.88	15.799		
800.0	797.0	794.8	794.7	1.9	1.6	-177.51	0.0	-21.5	63.4	60.1	3.33	19.037		
900.0	895.3	890.4	889.9	2.2	1.9	-178.14	-1.3	-29.5	86.5	82.7	3.80	22.769		
1,000.0	992.9	983.5	982.4	2.7	2.1	-179.53	-3.1	-40.3	115.4	111.1	4.29	26.908		
1,100.0	1,089.8	1,073.8	1,071.7	3.1	2.4	179.04	-5.2	-53.6	150.1	145.3	4.79	31.347		
1,200.0	1,185.9	1,160.7	1,157.2	3.7	2.6	177.81	-7.7	-69.0	190.7	185.4	5.30	35.988		
1,300.0	1,281.0	1,244.5	1,239.1	4.3	3.0	176.78	-10.6	-86.2	236.9	231.1	5.82	40.714		
1,400.0	1,374.9	1,330.4	1,322.9	4.9	3.3	176.00	-13.6	-104.8	287.3	281.0	6.33	45.367		
1,500.0	1,467.7	1,414.4	1,404.8	5.7	3.7	175.55	-16.6	-123.1	340.9	334.1	6.84	49.843		
1,600.0	1,559.1	1,496.5	1,484.9	6.5	4.0	175.32	-19.5	-140.9	397.6	390.3	7.34	54.143		
1,700.0	1,649.1	1,576.5	1,563.0	7.4	4.4	175.20	-22.4	-158.2	457.2	449.4	7.84	58.286		
1,800.0	1,737.6	1,654.4	1,639.0	8.3	4.7	175.16	-25.1	-175.1	519.6	511.3	8.34	62.333		
1,900.0	1,824.4	1,730.1	1,712.8	9.4	5.1	175.18	-27.8	-191.5	584.8	576.0	8.82	66.295		
2,000.0	1,909.4	1,803.4	1,784.3	10.5	5.4	175.23	-30.4	-207.4	652.6	643.3	9.30	70.176		
2,100.0	1,992.6	1,874.3	1,853.5	11.7	5.7	175.29	-32.9	-222.8	723.0	713.2	9.77	73.982		
2,200.0	2,074.0	1,943.1	1,920.6	13.0	6.1	175.11	-35.4	-237.7	795.5	785.2	10.31	77.142		
2,300.0	2,155.3	2,011.5	1,987.4	14.3	6.4	174.73	-37.8	-252.5	868.3	857.3	10.92	79.486		
2,400.0	2,236.5	2,080.0	2,054.2	15.6	6.7	174.42	-40.2	-267.4	941.0	929.5	11.54	81.529		
2,500.0	2,317.8	2,148.5	2,121.0	16.9	7.0	174.15	-42.7	-282.2	1,013.9	1,001.7	12.17	83.324		
2,600.0	2,399.0	2,217.0	2,187.8	18.2	7.3	173.91	-45.1	-297.1	1,086.7	1,073.9	12.80	84.912		
2,700.0	2,480.3	2,285.5	2,254.6	19.5	7.7	173.71	-47.5	-311.9	1,159.5	1,146.1	13.43	86.322		
2,800.0	2,561.5	2,353.9	2,321.4	20.9	8.0	173.53	-50.0	-326.8	1,232.3	1,218.3	14.07	87.581		
2,900.0	2,642.8	2,422.4	2,388.2	22.2	8.3	173.37	-52.4	-341.6	1,305.2	1,290.4	14.71	88.712		
3,000.0	2,724.0	2,490.9	2,455.0	23.5	8.7	173.22	-54.8	-356.5	1,378.0	1,362.6	15.36	89.732		
3,100.0	2,805.3	2,559.4	2,521.8	24.9	9.0	173.09	-57.3	-371.3	1,450.8	1,434.8	16.00	90.653		
3,200.0	2,886.5	2,627.8	2,588.6	26.2	9.3	172.98	-59.7	-386.2	1,523.7	1,507.0	16.65	91.492		
3,300.0	2,967.8	2,696.3	2,655.4	27.5	9.6	172.87	-62.1	-401.0	1,596.5	1,579.2	17.31	92.257		
3,400.0	3,049.1	2,764.8	2,722.2	28.9	10.0	172.77	-64.6	-415.9	1,669.4	1,651.4	17.96	92.955		
3,500.0	3,130.3	2,833.3	2,789.0	30.2	10.3	172.69	-67.0	-430.7	1,742.2	1,723.6	18.61	93.597		
3,600.0	3,211.6	2,901.7	2,855.8	31.6	10.6	172.60	-69.4	-445.6	1,815.1	1,795.8	19.27	94.188		
3,700.0	3,292.8	2,970.2	2,922.6	32.9	11.0	172.53	-71.9	-460.4	1,888.0	1,868.0	19.93	94.732		
3,800.0	3,374.1	3,038.7	2,989.4	34.3	11.3	172.46	-74.3	-475.2	1,960.8	1,940.2	20.59	95.236		
3,900.0	3,455.3	3,107.2	3,056.2	35.6	11.6	172.39	-76.7	-490.1	2,033.7	2,012.4	21.25	95.703		
4,000.0	3,536.6	3,175.7	3,123.1	37.0	11.9	172.33	-79.2	-504.9	2,106.5	2,084.6	21.91	96.137		
4,100.0	3,617.8	3,244.1	3,189.9	38.3	12.3	172.28	-81.6	-519.8	2,179.4	2,156.8	22.57	96.541		
4,200.0	3,699.1	3,312.6	3,256.7	39.7	12.6	172.22	-84.0	-534.6	2,252.3	2,229.0	23.24	96.918		
4,300.0	3,780.3	3,381.1	3,323.5	41.0	12.9	172.18	-86.5	-549.5	2,325.1	2,301.2	23.90	97.270		
4,400.0	3,861.6	3,449.6	3,390.3	42.3	13.3	172.13	-88.9	-564.3	2,398.0	2,373.4	24.57	97.599		
4,500.0	3,942.8	3,518.0	3,457.1	43.7	13.6	172.09	-91.3	-579.2	2,470.8	2,445.6	25.24	97.909		
4,600.0	4,024.1	3,586.5	3,523.9	45.0	13.9	172.04	-93.7	-594.0	2,543.7	2,517.8	25.90	98.199		
4,700.0	4,105.3	3,655.0	3,590.7	46.4	14.3	172.01	-96.2	-608.9	2,616.6	2,590.0	26.57	98.471		
4,800.0	4,186.6	3,723.5	3,657.5	47.7	14.6	171.97	-98.6	-623.7	2,689.4	2,662.2	27.24	98.728		
4,900.0	4,267.8	3,792.0	3,724.3	49.1	14.9	171.93	-101.0	-638.6	2,762.3	2,734.4	27.91	98.970		
5,000.0	4,349.1	3,860.4	3,791.1	50.4	15.3	171.90	-103.5	-653.4	2,835.2	2,806.6	28.58	99.199		
5,100.0	4,430.3	3,928.9	3,857.9	51.8	15.6	171.87	-105.9	-668.3	2,908.0	2,878.8	29.25	99.414		

CC - Min centre to center distance or convergent point, SF - min separation factor, ES - min ellipse separation

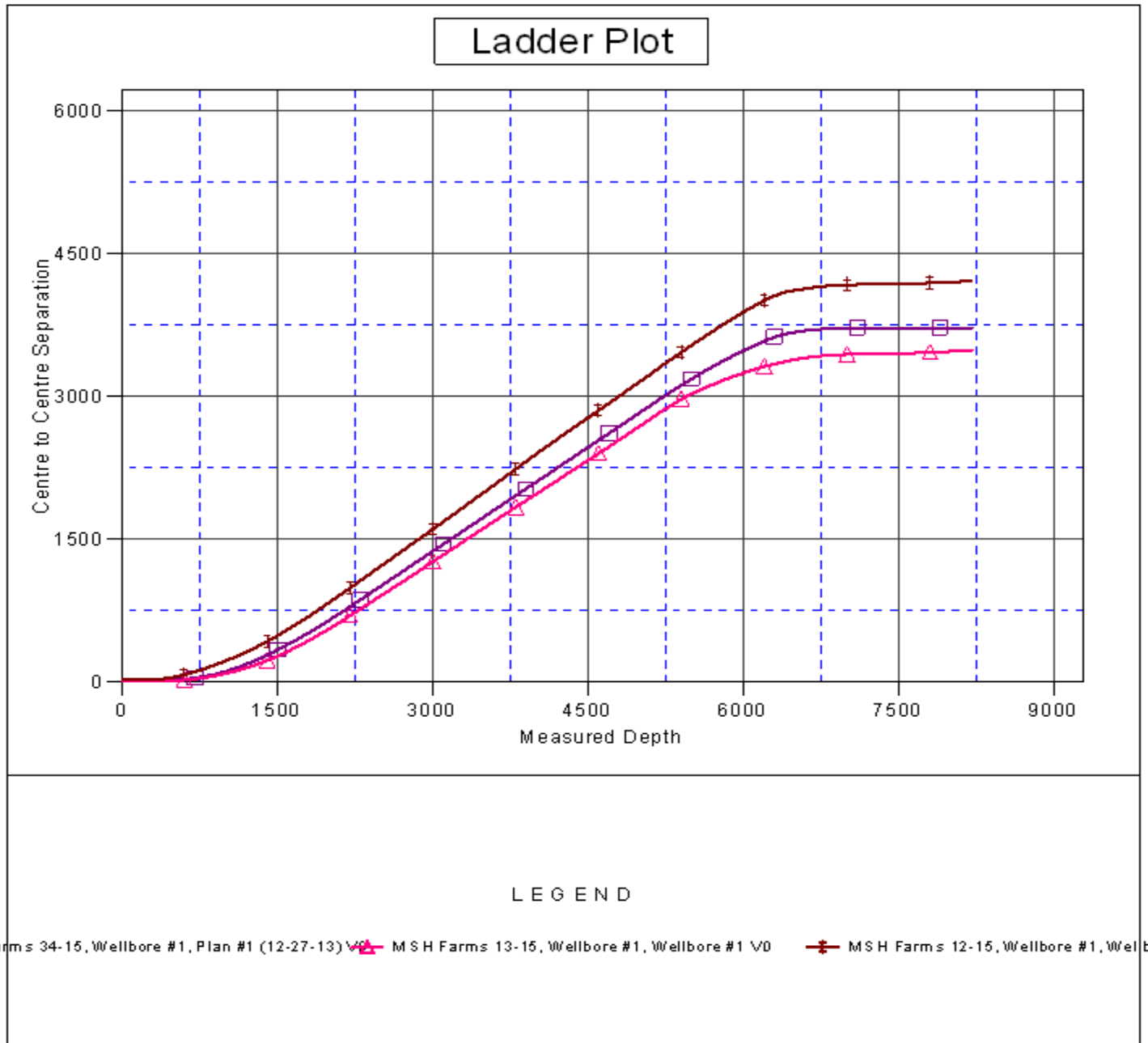
Company:	Bayswater Exploration & Production, LLC	Local Co-ordinate Reference:	Well Gilbert 17-22
Project:	SEC.15-T7N-R67W	TVD Reference:	WELL @ 5067.0ft (RKB - 13')
Reference Site:	MSH Farms 15-P Pad Sec.15-T7N-R67W	MD Reference:	WELL @ 5067.0ft (RKB - 13')
Site Error:	0.0ft	North Reference:	True
Reference Well:	Gilbert 17-22	Survey Calculation Method:	Minimum Curvature
Well Error:	0.0ft	Output errors are at	2.00 sigma
Reference Wellbore	Wellbore #1	Database:	Landmark
Reference Design:	Plan #1 (12-27-13)	Offset TVD Reference:	Offset Datum

Offset Design MSH Farms 15-P Pad Sec.15-T7N-R67W - MSH Farms 34-15 - Wellbore #1 - Plan #1 (12-27-13)												Offset Site Error:	0.0 ft
Survey Program: 0-MWD												Offset Well Error:	0.0 ft
Reference		Offset		Semi Major Axis			Distance						
Measured Depth (ft)	Vertical Depth (ft)	Measured Depth (ft)	Vertical Depth (ft)	Reference (ft)	Offset (ft)	Highside Toolface (°)	Offset Wellbore Centre +N/-S (ft)	+E/-W (ft)	Between Centres (ft)	Between Ellipses (ft)	Minimum Separation (ft)	Separation Factor	Warning
5,200.0	4,511.6	3,997.4	3,924.7	53.1	15.9	171.84	-108.3	-683.1	2,980.9	2,951.0	29.92	99.619	
5,300.0	4,593.4	4,066.6	3,992.2	54.4	16.3	172.03	-110.8	-698.1	3,053.1	3,022.3	30.75	99.302	
5,400.0	4,677.2	4,138.2	4,062.1	55.5	16.6	172.26	-113.3	-713.6	3,122.8	3,091.3	31.57	98.909	
5,500.0	4,762.8	4,212.2	4,134.2	56.5	17.0	172.44	-116.0	-729.7	3,190.1	3,157.7	32.38	98.535	
5,600.0	4,850.2	4,288.4	4,208.6	57.4	17.3	172.60	-118.7	-746.2	3,254.8	3,221.6	33.15	98.184	
5,700.0	4,939.2	4,366.8	4,285.1	58.3	17.7	172.74	-121.5	-763.2	3,316.8	3,282.9	33.89	97.861	
5,800.0	5,029.7	4,447.3	4,363.6	59.1	18.1	172.84	-124.3	-780.7	3,376.0	3,341.4	34.60	97.567	
5,900.0	5,121.7	4,529.7	4,444.0	59.8	18.5	172.93	-127.2	-798.5	3,432.4	3,397.1	35.27	97.306	
6,000.0	5,215.0	4,614.1	4,526.3	60.4	18.9	173.00	-130.2	-816.8	3,486.0	3,450.0	35.91	97.078	
6,100.0	5,309.5	4,700.2	4,610.3	61.0	19.3	173.05	-133.3	-835.5	3,536.5	3,500.0	36.50	96.884	
6,200.0	5,405.0	4,788.0	4,696.0	61.5	19.8	173.08	-136.4	-854.5	3,584.1	3,547.1	37.05	96.726	
6,300.0	5,501.6	4,877.3	4,783.1	62.0	20.2	173.09	-139.6	-873.9	3,628.6	3,591.0	37.56	96.604	
6,400.0	5,599.0	5,700.5	5,599.0	62.4	22.2	172.90	-154.1	-962.4	3,660.0	3,620.6	39.39	92.913	
6,500.0	5,697.1	5,798.6	5,697.1	62.7	22.3	172.99	-154.1	-962.4	3,679.1	3,639.4	39.66	92.775	
6,600.0	5,795.8	5,897.4	5,795.8	63.0	22.4	173.06	-154.1	-962.4	3,694.8	3,654.9	39.87	92.682	
6,700.0	5,895.0	5,996.6	5,895.0	63.2	22.5	173.11	-154.1	-962.4	3,707.1	3,667.1	40.02	92.633	
6,800.0	5,994.6	6,096.2	5,994.6	63.4	22.7	173.15	-154.1	-962.4	3,715.9	3,675.8	40.12	92.626	
6,900.0	6,094.5	6,196.0	6,094.5	63.5	22.8	173.17	-154.1	-962.4	3,721.3	3,681.2	40.16	92.659	
7,000.0	6,194.5	6,296.0	6,194.5	63.5	22.9	173.18	-154.1	-962.4	3,723.2	3,683.1	40.16	92.721	
7,100.0	6,294.5	6,396.0	6,294.5	63.6	23.0	-73.52	-154.1	-962.4	3,723.3	3,682.8	40.40	92.149	
7,200.0	6,394.5	6,496.0	6,394.5	63.6	23.2	-73.52	-154.1	-962.4	3,723.3	3,682.6	40.67	91.548	
7,300.0	6,494.5	6,596.0	6,494.5	63.7	23.3	-73.52	-154.1	-962.4	3,723.3	3,682.3	40.94	90.949	
7,400.0	6,594.5	6,696.0	6,594.5	63.7	23.4	-73.52	-154.1	-962.4	3,723.3	3,682.0	41.21	90.350	
7,500.0	6,694.5	6,796.0	6,694.5	63.8	23.5	-73.52	-154.1	-962.4	3,723.3	3,681.8	41.48	89.753	
7,600.0	6,794.5	6,896.0	6,794.5	63.8	23.7	-73.52	-154.1	-962.4	3,723.3	3,681.5	41.76	89.158	
7,700.0	6,894.5	6,996.0	6,894.5	63.9	23.8	-73.52	-154.1	-962.4	3,723.3	3,681.2	42.04	88.564	
7,800.0	6,994.5	7,096.0	6,994.5	63.9	23.9	-73.52	-154.1	-962.4	3,723.3	3,680.9	42.32	87.973	
7,900.0	7,094.5	7,196.0	7,094.5	64.0	24.1	-73.52	-154.1	-962.4	3,723.3	3,680.6	42.61	87.383	
8,000.0	7,194.5	7,296.0	7,194.5	64.0	24.2	-73.52	-154.1	-962.4	3,723.3	3,680.4	42.90	86.796	
8,100.0	7,294.5	7,396.0	7,294.5	64.1	24.4	-73.52	-154.1	-962.4	3,723.3	3,680.1	43.19	86.212	
8,144.9	7,339.4	7,441.0	7,339.4	64.1	24.4	-73.52	-154.1	-962.4	3,723.3	3,679.9	43.32	85.950	
8,200.0	7,394.5	7,456.6	7,355.0	64.1	24.4	-73.52	-154.1	-962.4	3,723.5	3,680.1	43.41	85.772	
8,205.5	7,400.0	7,456.6	7,355.0	64.1	24.4	-73.52	-154.1	-962.4	3,723.5	3,680.1	43.42	85.761	

Company:	Bayswater Exploration & Production, LLC	Local Co-ordinate Reference:	Well Gilbert 17-22
Project:	SEC.15-T7N-R67W	TVD Reference:	WELL @ 5067.0ft (RKB - 13')
Reference Site:	MSH Farms 15-P Pad Sec.15-T7N-R67W	MD Reference:	WELL @ 5067.0ft (RKB - 13')
Site Error:	0.0ft	North Reference:	True
Reference Well:	Gilbert 17-22	Survey Calculation Method:	Minimum Curvature
Well Error:	0.0ft	Output errors are at	2.00 sigma
Reference Wellbore	Wellbore #1	Database:	Landmark
Reference Design:	Plan #1 (12-27-13)	Offset TVD Reference:	Offset Datum

Reference Depths are relative to WELL @ 5067.0ft (RKB - 13')
Offset Depths are relative to Offset Datum
Central Meridian is -105.500000 °

Coordinates are relative to: Gilbert 17-22
Coordinate System is US State Plane 1983, Colorado Northern Zone
Grid Convergence at Surface is: 0.40°



Company:	Bayswater Exploration & Production, LLC	Local Co-ordinate Reference:	Well Gilbert 17-22
Project:	SEC.15-T7N-R67W	TVD Reference:	WELL @ 5067.0ft (RKB - 13')
Reference Site:	MSH Farms 15-P Pad Sec.15-T7N-R67W	MD Reference:	WELL @ 5067.0ft (RKB - 13')
Site Error:	0.0ft	North Reference:	True
Reference Well:	Gilbert 17-22	Survey Calculation Method:	Minimum Curvature
Well Error:	0.0ft	Output errors are at	2.00 sigma
Reference Wellbore	Wellbore #1	Database:	Landmark
Reference Design:	Plan #1 (12-27-13)	Offset TVD Reference:	Offset Datum

Reference Depths are relative to WELL @ 5067.0ft (RKB - 13')
Offset Depths are relative to Offset Datum
Central Meridian is -105.500000 °

Coordinates are relative to: Gilbert 17-22
Coordinate System is US State Plane 1983, Colorado Northern Zone
Grid Convergence at Surface is: 0.40°

