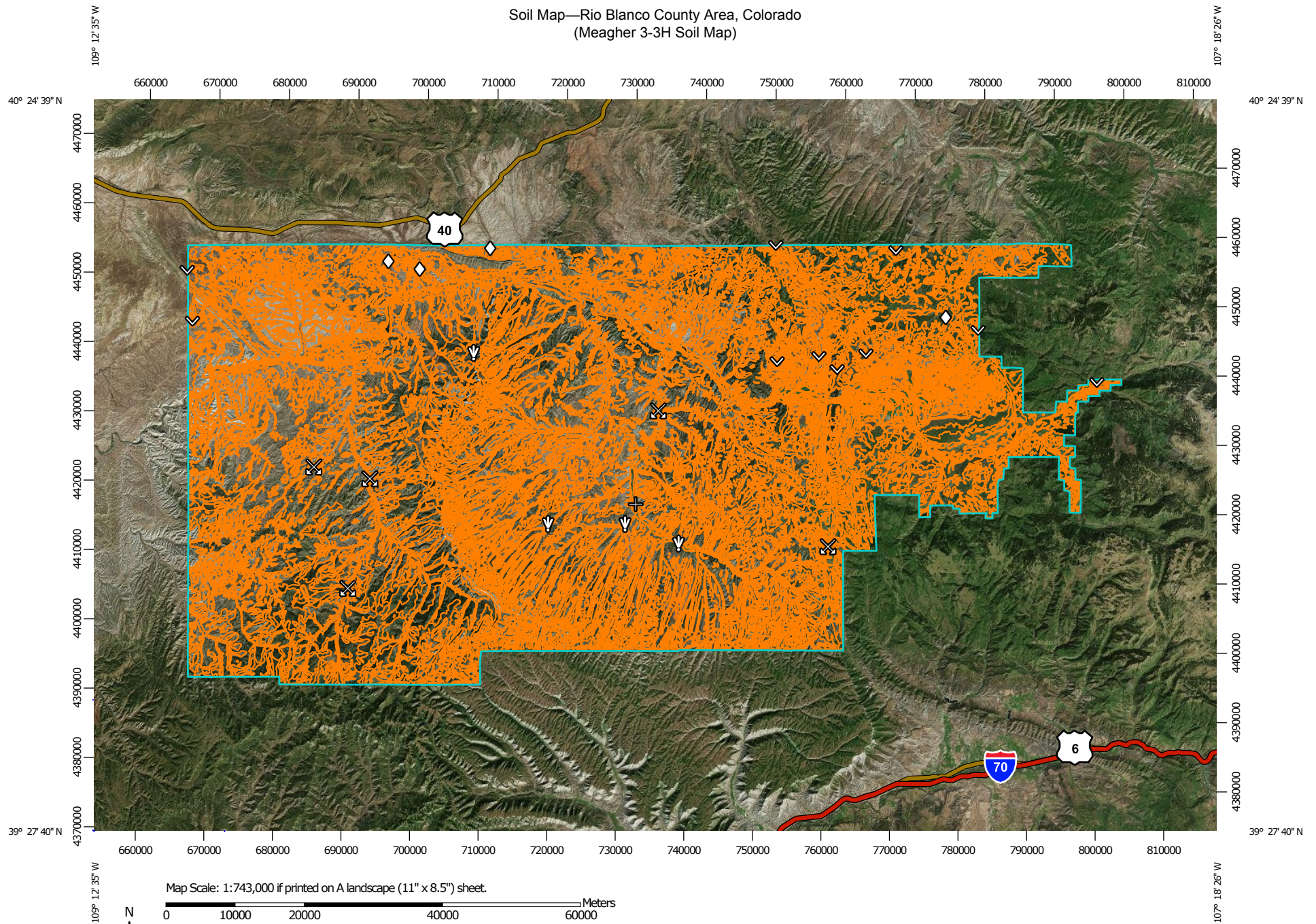
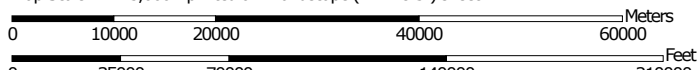


Soil Map—Rio Blanco County Area, Colorado
(Meagher 3-3H Soil Map)



Map Scale: 1:743,000 if printed on A landscape (11" x 8.5") sheet.



Map projection: Web Mercator Corner coordinates: WGS84 Edge tics: UTM Zone 12N WGS84



**Natural Resources
Conservation Service**

Web Soil Survey
National Cooperative Soil Survey

5/21/2014
Page 1 of 8

Soil Map—Rio Blanco County Area, Colorado
(Meagher 3-3H Soil Map)

MAP LEGEND

Area of Interest (AOI)

 Area of Interest (AOI)

Soils

 Soil Map Unit Polygons

 Soil Map Unit Lines

 Soil Map Unit Points

Special Point Features



Blowout



Borrow Pit



Clay Spot



Closed Depression



Gravel Pit



Gravelly Spot



Landfill



Lava Flow



Marsh or swamp



Mine or Quarry



Miscellaneous Water



Perennial Water



Rock Outcrop



Saline Spot



Sandy Spot



Severely Eroded Spot



Sinkhole



Slide or Slip



Sodic Spot



Spoil Area



Stony Spot



Very Stony Spot



Wet Spot



Other



Special Line Features

Water Features



Streams and Canals

Transportation



Rails



Interstate Highways



US Routes



Major Roads



Local Roads

Background



Aerial Photography

MAP INFORMATION

The soil surveys that comprise your AOI were mapped at 1:24,000.

Please rely on the bar scale on each map sheet for map measurements.

Source of Map: Natural Resources Conservation Service

Web Soil Survey URL: <http://websoilsurvey.nrcs.usda.gov>

Coordinate System: Web Mercator (EPSG:3857)

Maps from the Web Soil Survey are based on the Web Mercator projection, which preserves direction and shape but distorts distance and area. A projection that preserves area, such as the Albers equal-area conic projection, should be used if more accurate calculations of distance or area are required.

This product is generated from the USDA-NRCS certified data as of the version date(s) listed below.

Soil Survey Area: Rio Blanco County Area, Colorado

Survey Area Data: Version 9, Dec 23, 2013

Soil map units are labeled (as space allows) for map scales 1:50,000 or larger.

Date(s) aerial images were photographed: Jan 1, 1999—Dec 31, 2003

The orthophoto or other base map on which the soil lines were compiled and digitized probably differs from the background imagery displayed on these maps. As a result, some minor shifting of map unit boundaries may be evident.

Map Unit Legend

Rio Blanco County Area, Colorado (CO685)			
Map Unit Symbol	Map Unit Name	Acres in AOI	Percent of AOI
1	Abor clay loam, 5 to 30 percent slopes	12,626.4	0.8%
2	Absarokee-Delson channery loams, 8 to 65 percent slopes	8,809.1	0.5%
3	Absher loam, 0 to 3 percent slopes	1,659.5	0.1%
4	Absher loam, 3 to 8 percent slopes	1,862.4	0.1%
5	Badland	15,761.1	0.9%
6	Barcus channery loamy sand, 2 to 8 percent slopes	7,717.7	0.5%
7	Billings silty clay loam, 0 to 5 percent slopes	7,280.3	0.4%
8	Billings-Torrifluvents complex, gullied, 0 to 5 percent slopes	5,415.5	0.3%
9	Blakabin-Rhone-Waybe complex, 5 to 50 percent slopes	12,356.1	0.7%
10	Blazon, moist-Rentsac complex, 8 to 65 percent slopes	62,438.1	3.7%
11	Borollic Calciorthids-Guben complex, 6 to 50 percent slopes	3,166.7	0.2%
12	Bucklon-Inchau loams, 25 to 50 percent slopes	198.1	0.0%
13	Bulkley channery silty clay loam, 5 to 30 percent slopes	7,837.4	0.5%
14	Bulkley-Abor clay loams, 5 to 30 percent slopes	3,942.4	0.2%
15	Castner channery loam, 5 to 50 percent slopes	58,520.3	3.5%
16	Chipeta silty clay loam, 3 to 25 percent slopes	12,204.6	0.7%
17	Chipeta silty clay loam, 3 to 25 percent slopes, eroded	4,120.2	0.2%
18	Chipeta-Killpack silty clay loams, 3 to 15 percent slopes	11,377.3	0.7%
19	Chipeta-Walknolls complex, 5 to 15 percent slopes	6,486.7	0.4%
20	Clayburn loam, 3 to 15 percent slopes	1,735.4	0.1%

Rio Blanco County Area, Colorado (CO685)			
Map Unit Symbol	Map Unit Name	Acres in AOI	Percent of AOI
21	Cliffdown-Cliffdown variant complex, 5 to 65 percent slopes	4,340.5	0.3%
22	Clifterson channery loam, 1 to 15 percent slopes	555.9	0.0%
23	Cochetopa loam, 9 to 50 percent slopes	2,361.4	0.1%
24	Cochetopa-Jerry loams, 12 to 25 percent slopes	1,516.3	0.1%
25	Colorow sandy loam	3,601.8	0.2%
26	Cowdrey-Tampico loams, 15 to 50 percent slopes	3,601.3	0.2%
27	Curecanti very cobbly loam, 1 to 8 percent slopes	482.6	0.0%
28	Delson-Perma complex, 3 to 65 percent slopes	2,468.6	0.1%
29	Dollard silty clay loam, 3 to 8 percent slopes	1,236.3	0.1%
30	Dollard silty clay loam, 8 to 15 percent slopes	3,718.1	0.2%
31	Dollard silty clay loam, 15 to 40 percent slopes	7,037.6	0.4%
32	Fluvaquents, frequently flooded	1,097.7	0.1%
33	Forelle loam, 3 to 8 percent slopes	16,697.7	1.0%
34	Forelle loam, 8 to 15 percent slopes	5,729.4	0.3%
35	Gaynor-Midway silty clay loams, dry, 2 to 25 percent slopes	5,759.1	0.3%
36	Glendive fine sandy loam	35,097.5	2.1%
37	Glenton sandy loam, 1 to 6 percent slopes	1,493.8	0.1%
38	Guben loam, 0 to 3 percent slopes	192.8	0.0%
39	Guben loam, 3 to 8 percent slopes	667.8	0.0%
40	Hagga loam	3,119.9	0.2%
41	Havre loam, 0 to 4 percent slopes	17,401.6	1.0%
42	Irigul channery loam, 5 to 50 percent slopes	26,386.8	1.6%
43	Irigul-Parachute complex, 5 to 30 percent slopes	40,482.9	2.4%
44	Jerry loam, 12 to 45 percent slopes	2,462.9	0.1%

Rio Blanco County Area, Colorado (CO685)			
Map Unit Symbol	Map Unit Name	Acres in AOI	Percent of AOI
45	Jerry-Thornburgh-Rhone complex, 8 to 65 percent slopes	40,129.1	2.4%
46	Kinnear fine sandy loam, 1 to 5 percent slopes	2,625.6	0.2%
47	Kobar silty clay loam, 0 to 3 percent slopes	3,230.7	0.2%
48	Kobar silty clay loam, 3 to 8 percent slopes	12,373.0	0.7%
49	Kobar silty clay loam, 8 to 15 percent slopes	2,479.6	0.1%
50	Lamphier-Tampico-Kamack loams, 5 to 60 percent slopes	12,110.6	0.7%
51	Mergel-Redthayne-Dollard complex, 8 to 65 percent slopes	15,641.2	0.9%
52	Miracle fine sandy loam, 3 to 25 percent slopes	9,203.1	0.5%
53	Moyerson stony clay loam, 15 to 65 percent slopes	42,631.7	2.5%
54	Nagitsy-Irigul channery loams, 5 to 50 percent slopes	9,030.3	0.5%
55	Nihill channery sandy loam, 5 to 50 percent slopes	1,077.6	0.1%
56	Northwater loam, 5 to 50 percent slopes	7,295.9	0.4%
57	Owen Creek-Jerry-Burnette loams, 5 to 35 percent slopes	26,821.6	1.6%
58	Parachute loam, 25 to 75 percent slopes	26,157.2	1.6%
59	Parachute-Rhone loams, 5 to 30 percent slopes	12,973.8	0.8%
60	Patent loam, 0 to 3 percent slopes	1,609.8	0.1%
61	Patent loam, 3 to 8 percent slopes	12,788.6	0.8%
62	Patent loam, 8 to 15 percent slopes	3,113.2	0.2%
63	Patent loam, 15 to 25 percent slopes	1,064.9	0.1%
64	Piceance fine sandy loam, 5 to 15 percent slopes	17,640.4	1.1%
65	Pinelli clay loam, 3 to 12 percent slopes	1,466.2	0.1%
66	Potts-Begay fine sandy loams, 2 to 7 percent slopes	1,793.5	0.1%
67	Rabbitex flaggy loam, 10 to 65 percent slopes	6,694.8	0.4%

Rio Blanco County Area, Colorado (CO685)			
Map Unit Symbol	Map Unit Name	Acres in AOI	Percent of AOI
68	Rabbitex-Work loams, 10 to 25 percent slopes	2,530.5	0.2%
69	Razorba channery sandy loam, 30 to 75 percent slopes	8,075.5	0.5%
70	Redcreek-Rentsac complex, 5 to 30 percent slopes	41,160.6	2.5%
71	Redrob loam	3,850.9	0.2%
72	Redrob variant loam	1,080.2	0.1%
73	Rentsac channery loam, 5 to 50 percent slopes	222,322.7	13.3%
74	Rentsac-Moyerson-Rock outcrop complex, 5 to 65 percent slopes	275,583.3	16.4%
75	Rentsac-Piceance complex, 2 to 30 percent slopes	26,529.3	1.6%
76	Rhone loam, 30 to 75 percent slopes	11,616.8	0.7%
77	Rhone-Northwater-Lamphier loams, 3 to 50 percent slopes	9,304.6	0.6%
78	Rock outcrop	30,332.5	1.8%
79	Shawa loam, 1 to 3 percent slopes	2,230.2	0.1%
80	Shawa loam, 3 to 8 percent slopes	5,501.2	0.3%
81	Shawa loam, wet, 0 to 5 percent slopes	2,298.6	0.1%
82	Silas loam, 0 to 8 percent slopes	4,985.5	0.3%
83	Silas loam, 8 to 12 percent slopes	518.0	0.0%
84	Silas variant loam	799.4	0.0%
85	Sinkson gravelly sandy loam, 1 to 8 percent slopes	974.5	0.1%
86	Sinkson gravelly sandy loam, 8 to 15 percent slopes	566.2	0.0%
87	Starman-Vandamore complex, 5 to 40 percent slopes	13,903.1	0.8%
88	Tampico-Miracle complex, 8 to 50 percent slopes	22,159.4	1.3%
89	Tisworth fine sandy loam, 0 to 5 percent slopes	11,245.0	0.7%
90	Torrifluvents, gullied	9,424.1	0.6%
91	Torriorthents-Rock outcrop complex, 15 to 90 percent slopes	135,066.7	8.1%
92	Trembles loam, wet	1,272.9	0.1%

Rio Blanco County Area, Colorado (CO685)			
Map Unit Symbol	Map Unit Name	Acres in AOI	Percent of AOI
93	Turley fine sandy loam, 0 to 3 percent slopes	4,974.8	0.3%
94	Turley fine sandy loam, 3 to 8 percent slopes	9,864.2	0.6%
95	Uffens loam, 0 to 5 percent slopes	4,366.4	0.3%
96	Veatch channery loam, 12 to 50 percent slopes	25,254.4	1.5%
97	Walknolls channery sandy loam, 5 to 50 percent slopes	2,891.7	0.2%
98	Waybe-Vandamore variant-Rock outcrop complex, 5 to 30 percent slopes	2,376.3	0.1%
99	Winnemucca-Clayburn loams, 8 to 25 percent slopes	12,174.2	0.7%
100	Work loam, 1 to 3 percent slopes	1,546.5	0.1%
101	Work loam, 3 to 8 percent slopes	5,577.1	0.3%
102	Work loam, 8 to 15 percent slopes	3,029.3	0.2%
103	Work loam, 15 to 25 percent slopes	330.1	0.0%
104	Yamac loam, 2 to 15 percent slopes	18,047.6	1.1%
105	Zoltay clay loam, 1 to 3 percent slopes	332.0	0.0%
106	Zoltay clay loam, 3 to 8 percent slopes	7,129.4	0.4%
107	Zoltay clay loam, 8 to 15 percent slopes	7,016.5	0.4%
108	Zoltay clay loam, 15 to 25 percent slopes	3,486.6	0.2%
109	Badland-Rock outcrop complex, 1 to 100 percent slopes	663.5	0.0%
110	Badland-Walknolls-Rock outcrop complex, 50 to 90 percent slopes	236.3	0.0%
111	Bullpen parachannery loam, 2 to 25 percent slopes	18.7	0.0%
112	Gilston sandy loam, 2 to 8 percent slopes	34.4	0.0%
113	Gilston-Chalkcliff association, 2 to 25 percent slopes	420.0	0.0%
114	Gompers very channery silt loam, 25 to 50 percent slopes	3,121.8	0.2%

Rio Blanco County Area, Colorado (CO685)			
Map Unit Symbol	Map Unit Name	Acres in AOI	Percent of AOI
115	Gompers-Rock outcrop complex, 50 to 80 percent slopes	221.9	0.0%
116	Green River-Fluvaquents complex, 0 to 2 percent slopes	6.4	0.0%
117	Hanksville silty clay loam, 2 to 25 percent slopes	38.7	0.0%
118	Mikim loam, 3 to 15 percent slopes	402.8	0.0%
119	Mikim silt loam, sodic, 1 to 4 percent slopes	72.6	0.0%
120	Moonset-Whetrock association, 8 to 50 percent slopes	335.9	0.0%
121	Pherson-Hickerson complex, 1 to 8 percent slopes	27.2	0.0%
122	Solirec-Abracon-Begay complex, 2 to 15 percent slopes	142.2	0.0%
123	Tabyago-Cedarknoll association, 2 to 8 percent slopes	3,880.6	0.2%
124	Towave-Gompers-Rock outcrop association, 45 to 80 percent slopes	523.1	0.0%
125	Walknolls extremely channery sandy loam, 4 to 25 percent slopes	1,173.4	0.1%
126	Walknolls-Badland-Rock outcrop complex, 25 to 50 percent slopes	864.3	0.1%
127	Walknolls-Gilston association, 2 to 25 percent slopes	3,294.4	0.2%
128	Walknolls-Rock outcrop complex, 50 to 70 percent slopes	2,540.7	0.2%
129	Water	3,734.9	0.2%
130	Miscellaneous water	87.0	0.0%
131	Dam	8.0	0.0%
Totals for Area of Interest		1,676,555.7	100.0%