

KGH OPERATING COMPANY

LOCATION DRAWING FOR

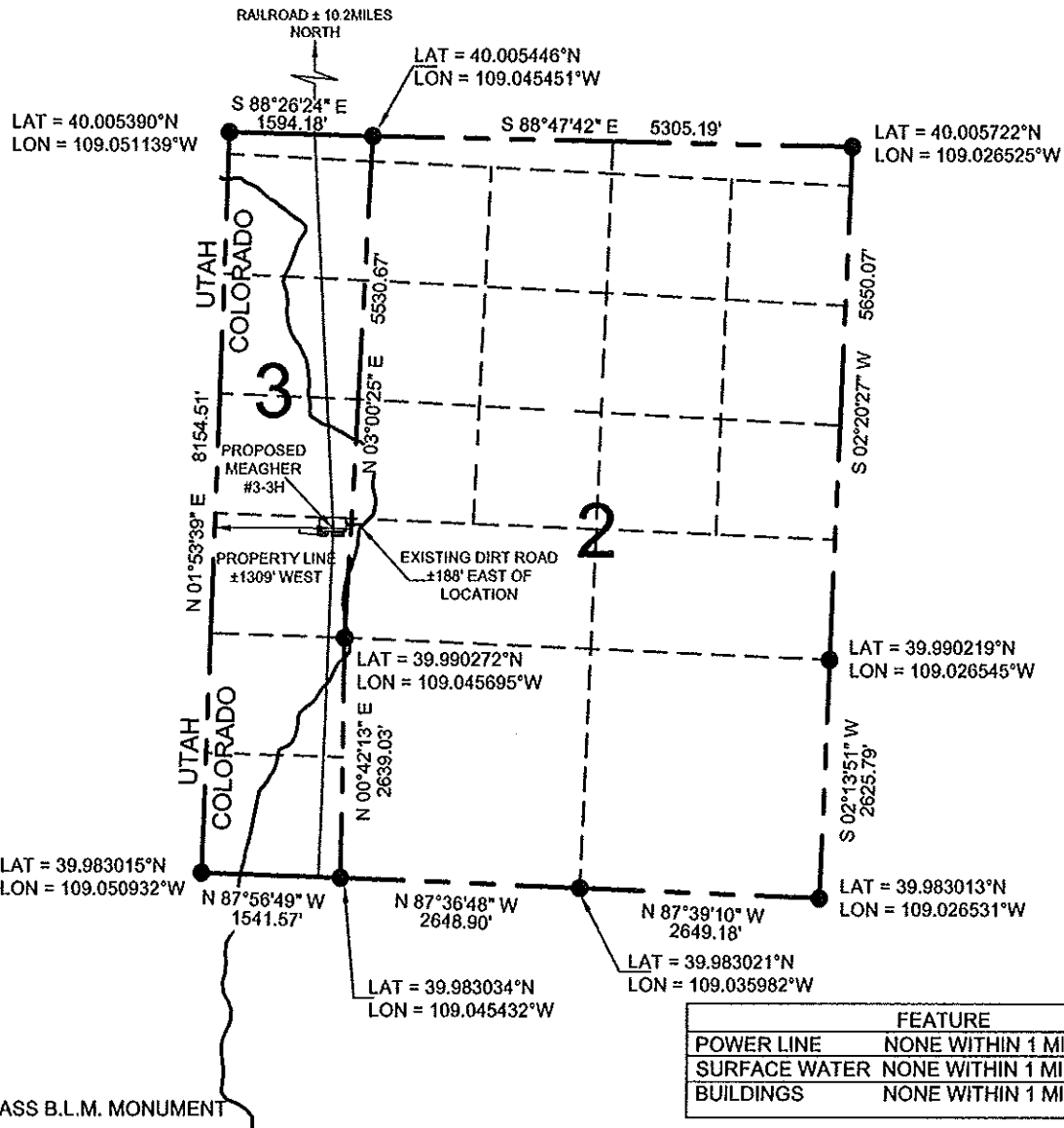
MEAGHER #3-3H

LOCATED IN RIO BLANCO COUNTY, COLORADO

SECTION 3, T1S, R104W, 6TH P.M.

3836' FSL & 200' FEL

FIGURE #4



PLANT COMMUNITY

- ☐ DISTURBED GRASSLAND
- ☐ NATIVE GRASSLAND
- ☐ SHRUB LAND
- ☐ PLAINS RIPARIAN
- ☐ MOUNTAIN RIPARIAN
- ☐ FOREST LAND
- ☐ WETLANDS AQUATIC
- ☐ ALPINE
- ☐ OTHER (DESCRIBE) _____

CURRENT LAND USE:

- CROP LAND: ☐ IRRIGATED ☐ DRY LAND ☐ IMPROVED PASTURE ☐ HAY MEADOW ☐ CRP
- NON CROP LAND: ☐ RANGELAND ☐ TIMBER ☐ RECREATIONAL ☐ OTHER (DESCRIBE) _____
- SUBDIVIDED: ☐ INDUSTRIAL ☐ COMMERCIAL ☐ RESIDENTIAL _____

FUTURE LAND USE:

- CROP LAND: ☐ IRRIGATED ☐ DRY LAND ☐ IMPROVED PASTURE ☐ HAY MEADOW ☐
- NON CROP LAND: ☐ RANGELAND ☐ TIMBER ☐ RECREATIONAL ☐ OTHER (DESCRIBE) _____
- SUBDIVIDED: ☐ INDUSTRIAL ☐ COMMERCIAL ☐ RESIDENTIAL _____



120 W. 84TH AVENUE PH. 303-702-1617
THORNTON, COLORADO 80260 FAX. 303-702-1488
WWW.POWERSURVEYING.COM

LOCATION DRAWING

SURVEYED BY: C. VAN MATRE
DRAWN BY: D. YOSHIDA
APPROVED BY: R. GABRIEL

REVISED:

SCALE:
1" = 1000'

DATE:
5/1/14

P9