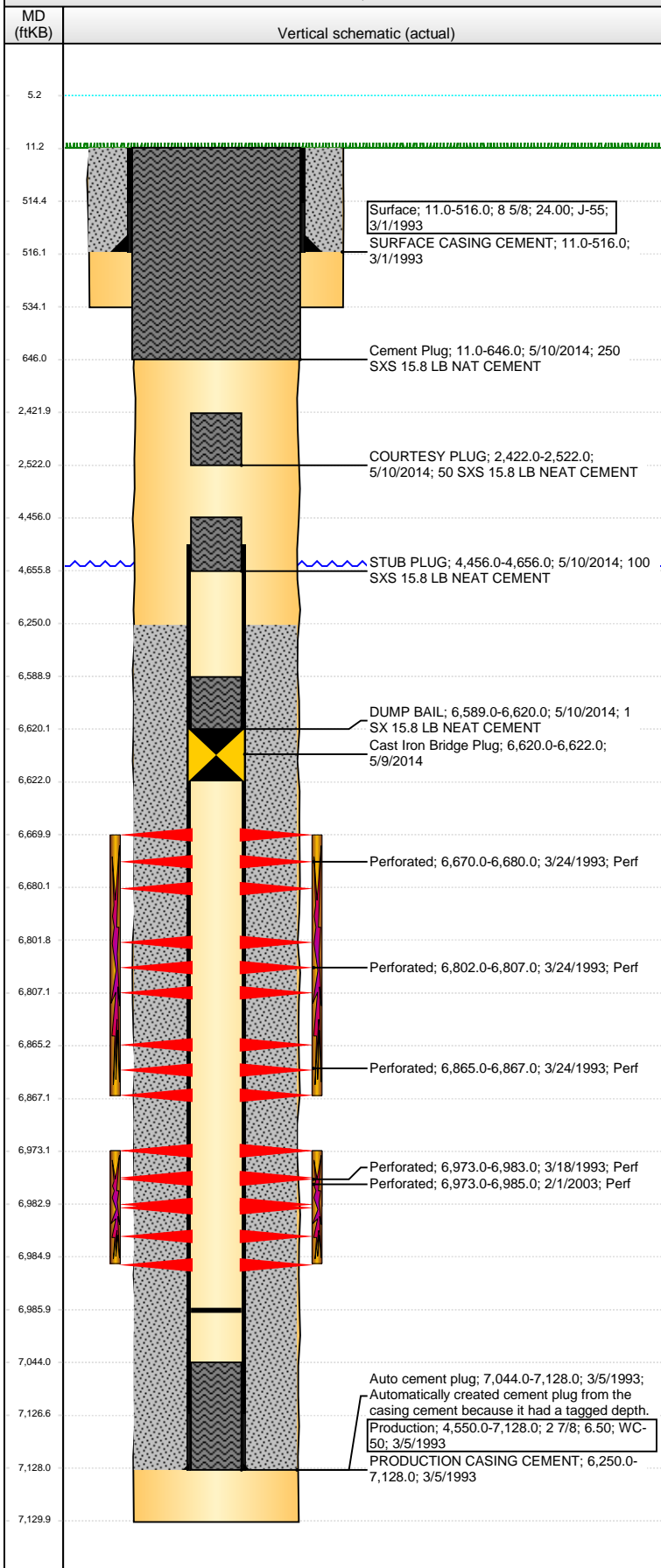


Well Name: LORENZ FARMS 22-03B

VERTICAL - ORIGINAL HOLE, 5/21/2014 2:44:41 PM



Well Header

API 05-123-16607	Business Unit WATTENBERG	District 15	Well Config VERTICAL
Original KB Elevation (ft) 4,635.00	KB - GL / MSL (ftKB) 11.00	Spud Date 2/28/1993	P & A Date 5/13/2014

Comment
tight @ 6832

Directions To Well

RD 45 & HWY 34, S.1, W.75, SW.1 INTO

Congressional Location

Quarter 1	Quarter 2	Quarter 3	Quarter 4	Section	Township	Twnshp N...	Range	Rng E/W Dir
		NE	NW	22	5	N	65	W

Bottom Hole Location

North-South Distance (ft)	From N or S Line	East-West Distance (ft)	From E or W Line

Plug Back Total Depths

Date	Depth (ftKB)	Method	Com
3/5/1993	7,095.0	CASING TALLY	LATCH DOWN COLLAR
3/18/1993	7,044.0	CASED HOLE LOG	DEPTH LOGGER ON CBL
3/6/2008	6,986.0	TAG	VERY HARD BOTTOM. THEY HAD TRIED TO CUT...

Wellbore Sections

Section Des	Size (in)	Act Top, MD (ftKB)	Act Btm, MD (ftKB)
SURFACE	12 1/4	11.0	534.0
PRODUCTION	7 7/8	534.0	7,130.0

Zone Statuses

Zone Name	Status Date	Status	Job
CODELL	4/2/1993	PR	DRILLING/COMPLETION - ORIGINAL, 2/28/1993 00:00
CODELL	2/9/2003	PR	RE-FRAC, 1/29/2003 00:00
NIOBRARA	4/2/1993	PR	DRILLING/COMPLETION - ORIGINAL, 2/28/1993 00:00

Casing Strings

Surface, 516.0ftKB

Casing Description	Run Date	OD (in)	Wt/Len (l...)	Grade	Top, MD (ft...)	MD (ftKB)
Surface	3/1/1993	8 5/8	24.00	J-55	11.0	516.0

Production, 7,128.0ftKB

Casing Description	Run Date	OD (in)	Wt/Len (l...)	Grade	Top, MD (ft...)	MD (ftKB)
Production	3/5/1993	2 7/8	6.50	WC-50	11.0	7,128.0

Cement

Description	Top Depth (ftKB)	Bottom Depth (ftKB)
SURFACE CASING CEMENT	11.0	516.0
PRODUCTION CASING CEMENT	6,250.0	7,128.0
COURTESY PLUG	2,422.0	2,522.0
STUB PLUG	4,456.0	4,656.0
DUMP BAIL	6,589.0	6,620.0
Cement Plug	11.0	646.0

Tubing Components

Item Des	OD (in)	Wt (lb/ft)	Grade	Jts	Len (ft)	Btm (ftKB)	Btm (TVD) (ftKB)

Perforation Data

Zone	Bnch/St g	Entered Shot Total	Top (ftKB)	Btm (ftKB)	Date
NIOBRARA, ORIGINAL HOLE	A	8	6,670.00	6,680.00	3/24/1993
NIOBRARA, ORIGINAL HOLE	B	12	6,802.00	6,807.00	3/24/1993
NIOBRARA, ORIGINAL HOLE	C	4	6,865.00	6,867.00	3/24/1993
CODELL, ORIGINAL HOLE		52	6,973.00	6,985.00	2/1/2003
CODELL, ORIGINAL HOLE		20	6,973.00	6,983.00	3/18/1993

Stimulations & Treatments

Date	Zone	Primary Job Type
3/20/1993	CODELL, ORIGINAL HOLE	DRILLING/COMPLETION - ORIGINAL
Technical Result	Tech Result Details	Tech Result Note

Comment

Well Name: LORENZ FARMS 22-03B

VERTICAL - ORIGINAL HOLE, 5/21/2014 2:44:43 PM

Stimulations & Treatments

Date	Zone	Primary Job Type
3/27/1993	NIOBRARA, ORIGINAL HOLE	DRILLING/COMPLETION - ORIGINAL

Technical Result	Tech Result Details	Tech Result Note

Comment

Date	Zone	Primary Job Type
2/8/2003	CODELL, ORIGINAL HOLE	RE-FRAC

Technical Result	Tech Result Details	Tech Result Note

Comment

Other In Hole

Run Date	Des	OD (in)	Top (ftKB)	Btm (ftKB)
5/9/2014	Cast Iron Bridge Plug	2.66	6,620.0	6,622.0

Logs

Date	Type	Top, MD (ftKB)	Btm, MD (ftKB)
3/5/1993	Compensated Density	4,000.0	7,112.0
3/5/1993	Induction	516.0	7,080.0
3/18/1993	Cement Bond	6,100.0	7,039.0
10/11/2012	GYRO	9.0	6,900.0

