

WPX ENERGY ROCKY MOUNTAIN LLC-EBUS

PA 323-2

Aztec/1000

Post Job Summary

Cement Surface Casing

Date Prepared: 04/30/2014

Submitted by: Grand Junction Cement Engineering

The Road to Excellence Starts with Safety

Sold To #: 300721	Ship To #: 3191543	Quote #:	Sales Order #: 0901177249
Customer: WPX ENERGY ROCKY MOUNTAIN LLC-EBUS		Customer Rep: FRANK MOORE	
Well Name: WPX ENERGY		Well #: PA 323-2	API/UWI #: 05-045-22147-00
Field: PARACHUTE	City (SAP): PAR	County/Parish: GARFIELD	State: COLORADO
Legal Description: NE SW-2-7S-95W-2041FSL-1553FWL			
Contractor:		Rig/Platform Name/Num: Aztec 1000	
Job BOM: 7521			
Well Type: DIRECTIONAL GAS			
Sales Person: HALAMERICA\HB50180		Srvc Supervisor: Francisco Castillo	
Job			

Formation Name				
Formation Depth (MD)	Top	SURFACE	Bottom	910ft
Form Type			BHST	
Job depth MD	897ft			Job Depth TVD
Water Depth			Wk Ht Above Floor	
Perforation Depth (MD)	From		To	

Well Data										
Description	New / Used	Size in	ID in	Weight lbm/ft	Thread	Grade	Top MD ft	Bottom MD ft	Top TVD ft	Bottom TVD ft
Casing		9.625	9.001	32.3			0	897		
Open Hole Section			13.5				0	910	0	0

Tools and Accessories									
Type	Size in	Qty	Make	Depth ft		Type	Size in	Qty	Make
Guide Shoe	9.625	1	WTF	897		Top Plug	9.625	1	HES
Float Shoe	0	0	0	0		Bottom Plug	0	0	0
Float Collar	9.625	1	WTF	859.53		SSR plug set	0	0	0
Insert Float	0	0	0	0		Plug Container	9.625	1	HES
Stage Tool	0	0	0	0		Centralizers	9.625	8	HES

Miscellaneous Materials											
Gelling Agt		Conc		Surfactant		Conc		Acid Type		Qty	Conc
Treatment Fld		Conc		Inhibitor		Conc		Sand Type		Size	Qty

Fluid Data										
Stage/Plug #: 1										
Fluid #	Stage Type	Fluid Name	Qty	Qty UoM	Mixing Density lbm/gal	Yield ft3/sack	Mix Fluid Gal	Rate bbl/min	Total Mix Fluid Gal	
1	Fresh Water	Fresh Water	20	bbl	8.34			6		
Fluid #	Stage Type	Fluid Name	Qty	Qty UoM	Mixing Density lbm/gal	Yield ft3/sack	Mix Fluid Gal	Rate bbl/min	Total Mix Fluid Gal	
2	Tail Cement	VARICEM (TM) CEMENT	250	Sack/Ton	12.8	11.77		6	2.11	
11.71 Gal			FRESH WATER							

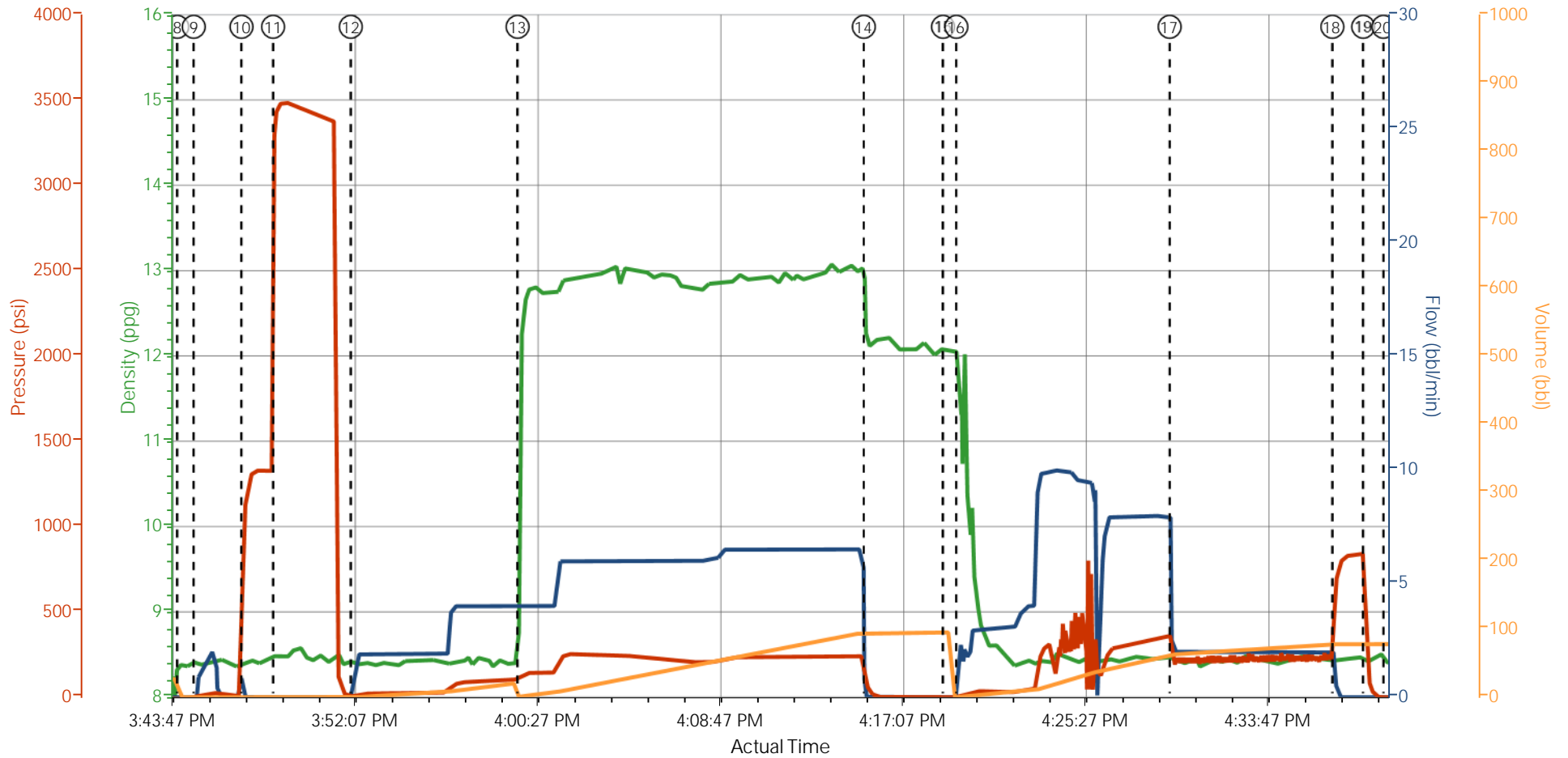
Fluid #	Stage Type	Fluid Name		Qty	Qty UoM	Mixing Density lbm/gal	Yield ft3/sack	Mix Fluid Gal	Rate bbl/min	Total Mix Fluid Gal
3	Displacement	Displacement		67.6	bbl	8.34			10	
Cement Left In Pipe		Amount	46.63ft			Reason		Shoe Joint		
Comment										

1.1 Job Event Log

Type	Seq. No.	Activity	Graph Label	Date	Time	Source	DH Density (ppg)	Comb Pump Rate (bbl/min)	PS Pump Press (psi)	Pump Stg Tot (bbl)	Comment
Event	1	Call Out	Call Out	3/9/2014	06:00:00	USER					ON LOCATION AS SOON AS POSSIBLE TO RELIEF CREW ON LOCATION.
Event	2	Depart Yard Safety Meeting	Depart Yard Safety Meeting	3/9/2014	07:50:00	USER					NO INJURIES TO REPORT BY HES PERSONEL BEFORE THE JOB.
Event	3	Crew Leave Yard	Crew Leave Yard	3/9/2014	08:00:00	USER					
Event	4	Arrive At Loc	Arrive At Loc	3/9/2014	10:00:00	USER					RIG WAS STILL PULLING DRILL PIPE OUT OF THE HOLE. UNABLE TO STAGE TRUCKS SO PARKED THEM AT THE ENTRANCE OF LOCATION TILL LOCATION WAS CLEARED. RIG LANDED CASING AT 14:45 HRS AND BEGAN TO CIRC AT 15:00 HRS
Event	5	Safety Meeting - Pre Rig-Up	Safety Meeting - Pre Rig-Up	3/9/2014	14:55:00	USER					
Event	6	Rig-Up Completed	Rig-Up Completed	3/9/2014	15:30:00	USER					
Event	7	Pre-Job Safety Meeting	Pre-Job Safety Meeting	3/9/2014	15:35:00	USER					ALL HES PERSONEL AND RIG CREW
Event	8	Start Job	Start Job	3/9/2014	15:44:11	COM5					TD-910', OH-13.5", TP-897', SJ-46.63', FC- 859.53', CSG-9.625", 32.3#, H-40, MUD-10.7 PPG, FV- 55, PV-23, YP-18, pH-8.5, TEMP-87
Event	9	Other	Fill Lines	3/9/2014	15:44:56	COM5	8.33	2	26	2	FRESH WATER
Event	10	Test Lines	Stall Out	3/9/2014	15:47:06	COM5	8.33	0	1330	0	PRESSURE HELD AT 1300 PSI
Event	11	Test Lines	Test Lines	3/9/2014	15:48:33	COM5	8.33	0	3485	0	PRESSURE HELD AT 3485 PSI
Event	12	Pump Spacer 1	Pump Water Spacer	3/9/2014	15:52:05	COM5	8.33	6	210	20	FRESH WATER

Event	13	Pump Tail Cement	Pump Cement Slurry	3/9/2014	15:59:42	COM5	12.8	6	239	94	250SKS, 12.8PPG, 2.11FT3/SK, 11.77 GAL/SK, SETUP TIME 1:51 HRS AT 70 BC
Event	14	Other	Shutdown	3/9/2014	16:15:29	COM5	0	0	0	0	
Event	15	Drop Plug	Drop Plug	3/9/2014	16:19:06	USER	0	0	0	0	VERIFIED BY CUSTOMER
Event	16	Pump Displacement	Pump Displacement	3/9/2014	16:19:42	COM5	8.33	10	373	57.6	FRESH WATER
Event	17	Slow Rate	Slow Rate	3/9/2014	16:29:26	USER	8.33	2.00	225	10	
Event	18	Bump Plug	Bump Plug	3/9/2014	16:36:51	USER			838	67.6	CIRCULATED 25 BBLS/67 SKS OF CEMENT TO SURFACE.
Event	19	Check Floats	Check Floats	3/9/2014	16:38:15	USER					1.5 BBLS FLOW BACK TO DISPLACEMENT TANK
Event	20	End Job	End Job	3/9/2014	16:39:11	USER					USED 40 LBS OF SUGAR IN THE CELLAR.
Event	21	Safety Meeting - Pre Rig-Down	Rig Down Safety Meeting	3/9/2014	16:50:00	USER					
Event	22	Other	Blow Down Cement Pump	3/9/2014	17:23:10	USER					
Event	23	Rig-Up Completed	Rig-Up Completed	3/9/2014	18:15:00	USER					
Event	24	Depart Location Safety Meeting	Depart Location Safety Meeting	3/9/2014	18:45:00	USER					NO INJURIES TO REPORT BY HES PERSONEL AFTER THE JOB.
Event	25	Depart Location	Depart Location	3/9/2014	19:00:00	USER					
Event	26	Other	Other	3/9/2014	19:01:00	USER					THANK YOU FOR YOUR BUSINESS FROM JAVIER CASTILLO AND CREW

WPX PA 323-2 Surface



— DH Density (ppg)
 — Comb Pump Rate (bbl/min)
 — PS Pump Press (psi)
 — Pump Stg Tot (bbl)

1 Call Out n/a;n/a;n/a;n/a	5 Safety Meeting - Pre Rig-Up n/a;n/a;n/a;n/a	9 Fill Lines 8.41;0.7;6;0	13 Pump Cement Slurry 12.4;114;1.3	17 Slow Rate 8.46;2;213;62.9
2 Depart Yard Safety Meeting n/a;n/a;n/a;n/a	6 Rig-Up Completed 8.31;0;-2;26.6	10 Stall Out 8.39;0;1135;1.5	14 Shutdown 12.12;0;54;95	18 Bump Plug 8.45;0.3;696;7
3 Crew Leave Yard n/a;n/a;n/a;n/a	7 Pre-Job Safety Meeting 8.37;0;-4;26.6	11 Test Lines 8.51;0;3444;1.5	15 Drop Plug 12.11;0;0;95	19 Check Floats 8.4;0;204;77
4 Arrive At Loc n/a;n/a;n/a;n/a	8 Start Job 8.39;0;-9;0	12 Pump Water Spacer 8.4;1;7;0.1	16 Pump Displacement 11.41;1.6;4;0.1	20 End Job 8.41;0;-5;77.8

▼ HALLIBURTON | iCem® Service

Created: 2014-03-09 15:10:53, Version: 3.0.121

Edit

Customer : WPX ENERGY ROCKY MOUNTAIN LLC-EBUS

Job Date : 3/9/2014 3:12:23 PM

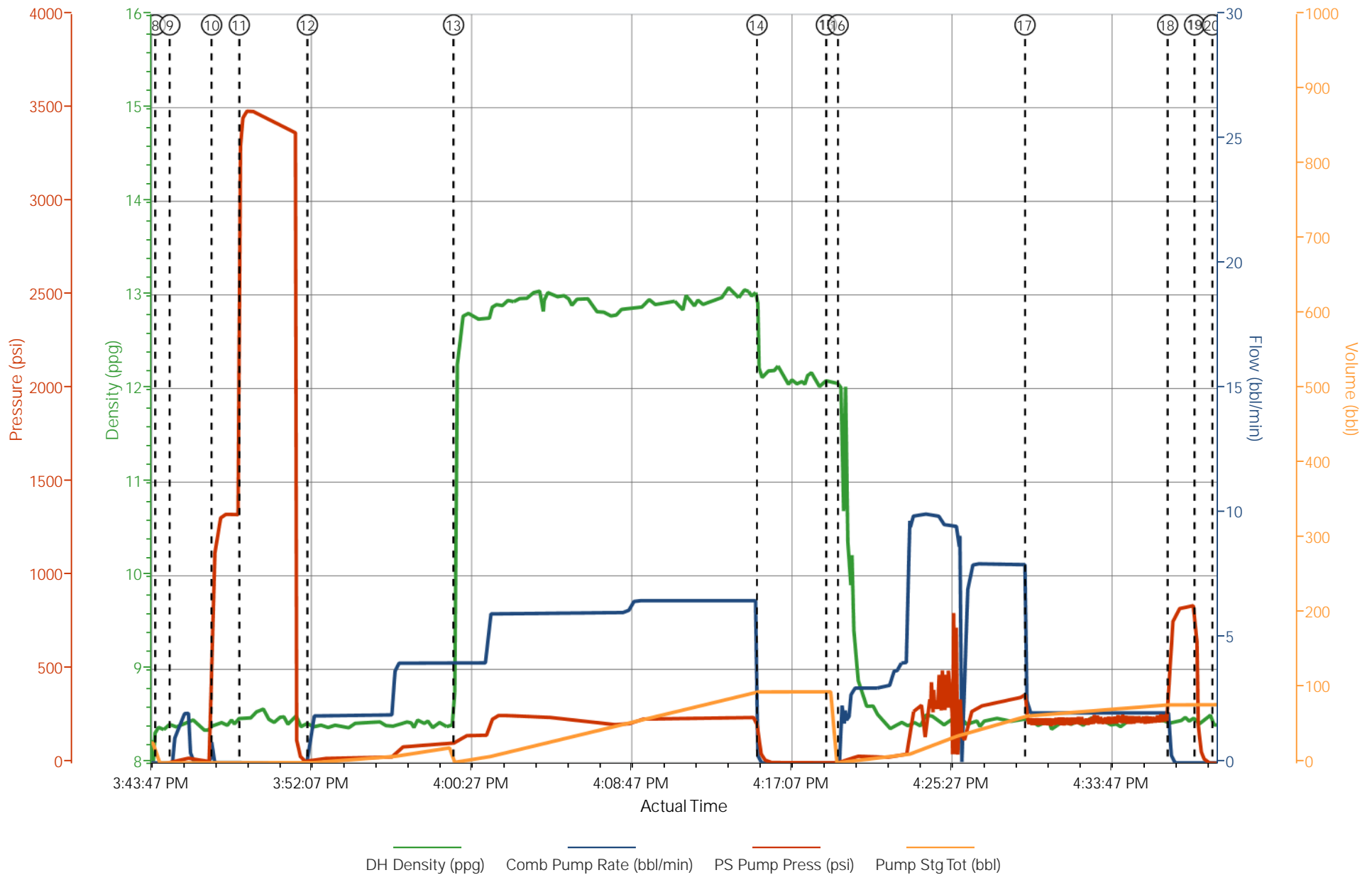
Well : PA 323-2

Representative: FRANK MOORE

Sales Order #: 901177249

ELITE #3: J. CASTILLO / DAN SINCLAIR

WPX PA 323-2 Surface



HALLIBURTON

Water Analysis Report

Company: WPX

Submitted by: JAVIER CASTILLO

Attention: Chuck Ross

Lease PA

Well # 323-2

Date: 3/9/2014

Date Rec.: 3/9/2014

S.O.# 901177249

Job Type: SURFACE

Specific Gravity	<i>MAX</i>	1
pH	<i>8</i>	7
Potassium (K)	<i>5000</i>	1000 Mg / L
Calcium (Ca)	<i>500</i>	120 Mg / L
Iron (FE2)	<i>300</i>	0 Mg / L
Chlorides (Cl)	<i>3000</i>	0 Mg / L
Sulfates (SO ₄)	<i>1500</i>	200 Mg / L
Chlorine (Cl ₂)		0 Mg / L
Temp	<i>40-80</i>	52 Deg
Total Dissolved Solids		710 Mg / L

Respectfully: JAVIER CASTILLO

Title: CEMENTING SUPERVISOR

Location: Grand Junction, CO

NOTICE:

This report is limited to the described sample tested. Any person using or relying on this report agrees that Halliburton shall not be liable for any loss or damage whether due to act or omission resulting from such report or its