

Rangely Weber Sand Unit

Well Details:

STATE & CO	CO - Rio Blanco
TWNS & RNG	T2N & R102W
SECTION	(SWSE) 21
API	05-103-0568500
CHEVNO	DE5467

Casing Details:

Type	Depth
KB	5356
GL	GL
16 in. 55 #/ft, UNKNOWN	0 - 43,' 70 sxs cmt
10.75 in. 50 #/ft, UNKNOWN	0 - 1019,' 425 sxs cmt
7 in. 23 #/ft, UNKNOWN	0 - 6010,' 1000 sxs cmt
5 in. 18 #/ft, L-80	5862 - 6510,' 450 sxs cmt
Perfs, Top	6032
Perfs, Btm	6122
PBTD	6447
TD	6510

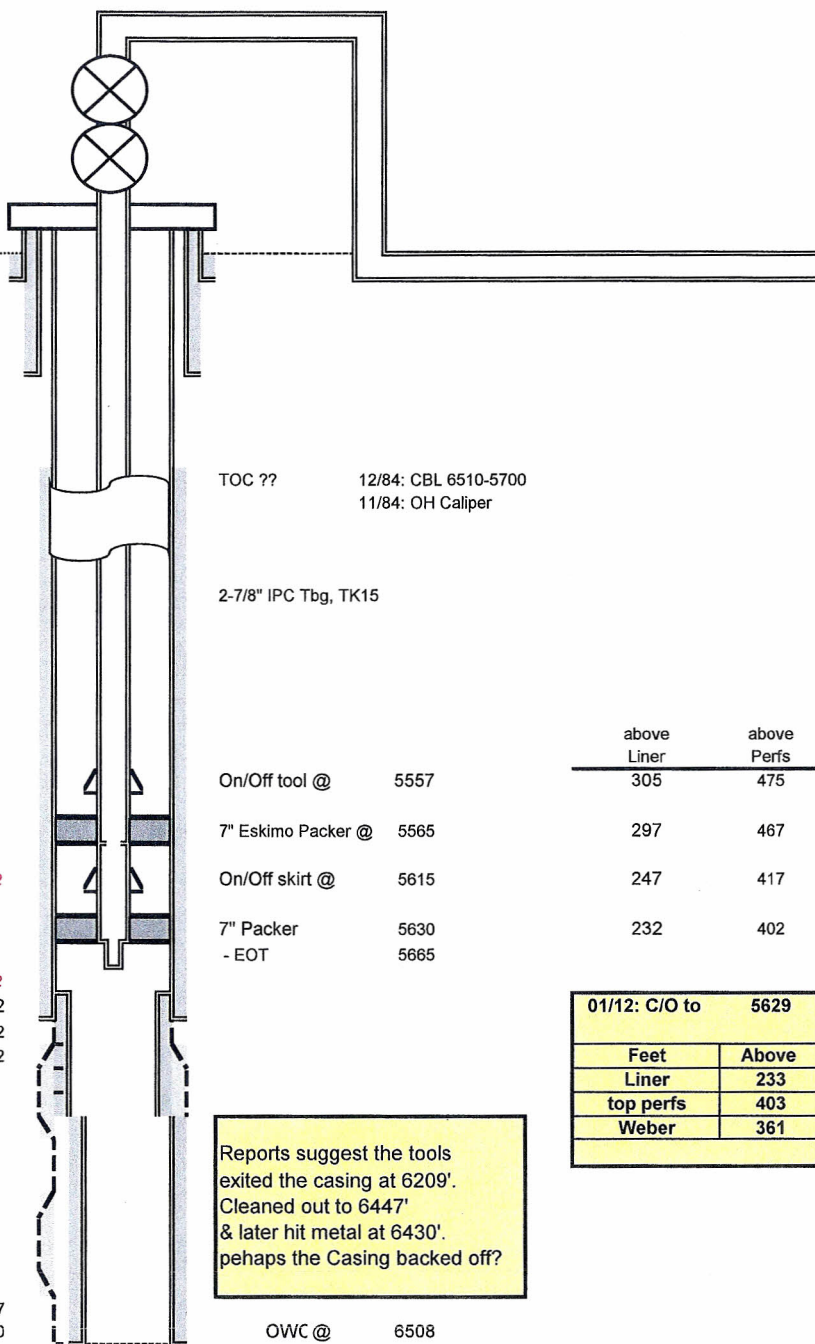
Formation	Depth
Niobrara	2167
Frontier	3087
Frontier Snd	3175
Mowry	3361
Dakota	3445
Morrison	3540
Curtis	4199
Entrada	4353
Carmel	4468
Navajo	4524
Chinle	5112
Shinarump	5245
Moenkopi	5330
Weber	5990

KB 5356
GL GL
16 in. 55 #/ft, UNKNOWN
0 - 43,' 70 sxs cmt
10.75 in. 50 #/ft, UNKNOWN
0 - 1019,' 425 sxs cmt
7 in. 23 #/ft, UNKNOWN
0 - 6010,' 1000 sxs cmt

5 in. 18 #/ft, L-80
5862 - 6510,' 450 sxs cmt

Lnr Top 5862
Perfs, Top 6032
Perfs, Btm 6122

PBTD 6447
TD 6510



Feet	Above
Liner	233
top perfs	403
Weber	361

GOC_CALC	5688	FT	PAY
Weber 1a	5990	158	46
Weber 2	6148		
Weber 3a	6160	100	46
Weber 4	6260		
Weber 5a	6268	152	102
Weber 6	6420		
Weber 7a	6435	###	29
Weber 8	0		
Weber 9a	0	0	0
Weber 10	0		
Weber 11a	0	0	0
OWC_CALC	6508	###	223

Notes:

- 01/12: Repair Hole in tubing, CO to 5629' set PKR @ 5570' (292' above liner, 462' above top perf & 632' above parted 5" csg) & RTP.
- 12/93: C/O & drilled metal at 6430' (228' below the parted 5" csg.)
- 02/85: C/O to TD & install 5" L80 liner 5862-6510. parted at 6202', Drilled outside of liner to 6447' (63' above TD @ 6510).

Estimate \$1,000,000, Sidetrack & Add perfs & RTP. No Fac \$

**UNION PACIFIC 10-21
Sidetrack Wellbore**

11/18/13

Rangely Weber Sand Unit

Well Details:	
STATE & CO	CO - Rio Blanco
TWNS & RNG	T2N & R102W
SECTION	(SWSE) 21
API	05-103-0568500
CHEVNO	DE5467

Casing Details:	
Type	Depth
KB	5356
GL	GL
16 in. 55 #/ft, UNKNOWN	0 - 43,' 70 sxs cmt
10.75 in. 50 #/ft, UNKNOWN	0 - 1019,' 425 sxs cmt
7 in. 23 #/ft, UNKNOWN	0 - 6010,' 1000 sxs cmt
5 in. 18 #/ft, L-80	5862 - 6510,' 450 sxs cmt
Perfs, Top	6032
Perfs, Btm	6122
PBTD	6447
TD	6510

Formation	Depth
Niobrara	2167
Frontier	3087
Frontier Snd	3175
Mowry	3361
Dakota	3445
Morrison	3540
Curtis	4199
Entrada	4353
Carmel	4468
Navajo	4524
Chinle	5112
Shinarump	5245
Moenkopi	5330
Weber	5990

GOC_CALC	5688	FT	PAY
Weber 1a	5990	158	46
Weber 2	6148		
Weber 3a	6160	100	46
Weber 4	6260		
Weber 5a	6268	152	102
Weber 6	6420		
Weber 7a	6435	-6435	29
Weber 8	0		
Weber 9a	0	0	0
Weber 10	0		
Weber 11a	0	0	0
OWC_CALC	6508	-6025	223

KB 5356
GL GL
16 in. 55 #/ft, UNKNOWN
0 - 43,' 70 sxs cmt

10.75 in. 50 #/ft, UNKNOWN
0 - 1019,' 425 sxs cmt

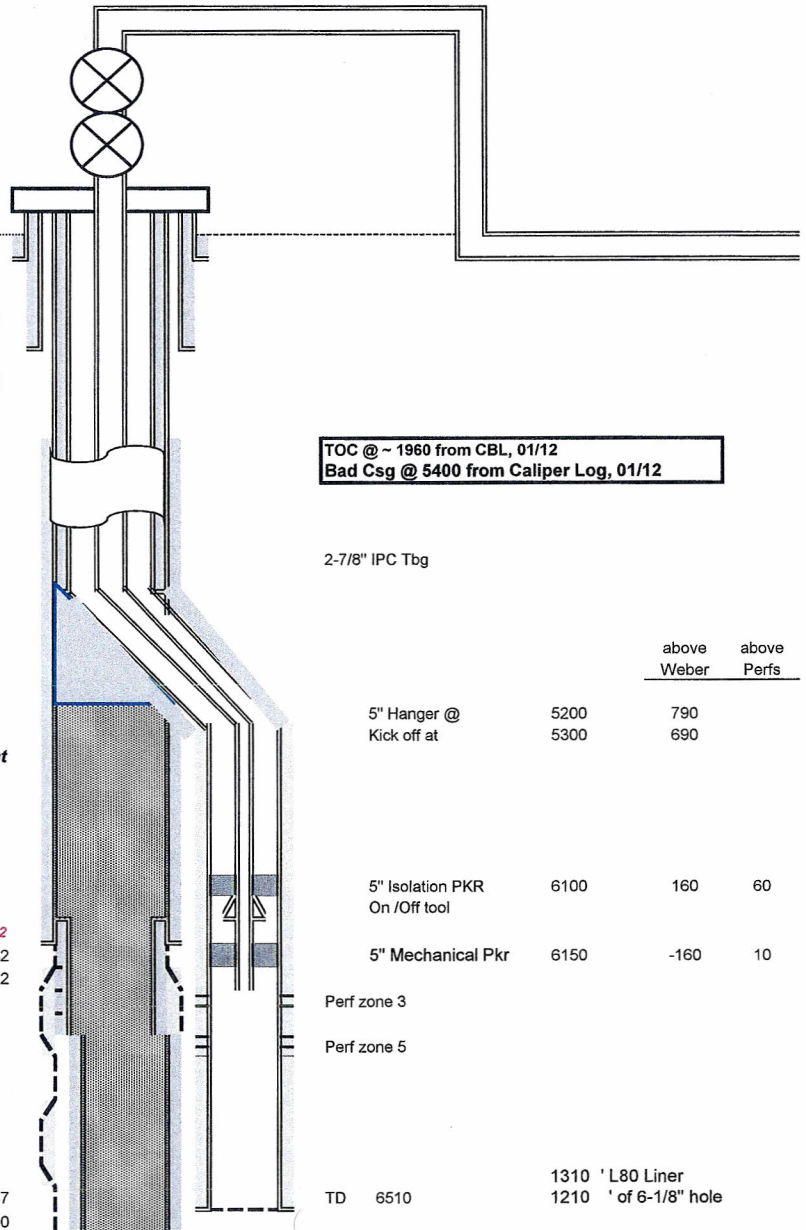
7 in. 23 #/ft, UNKNOWN
0 - 6010,' 1000 sxs cmt

5 in. 18 #/ft, L-80
5862 - 6510,' 450 sxs cmt

-588
OLD Wellbore
P&A w/ 60 -159 sxs cmt

5982
Perfs, Top 6032
Perfs, Btm 6122

PBTD 6447
TD 6510



Notes:

- 1-
- 2-
- 3-