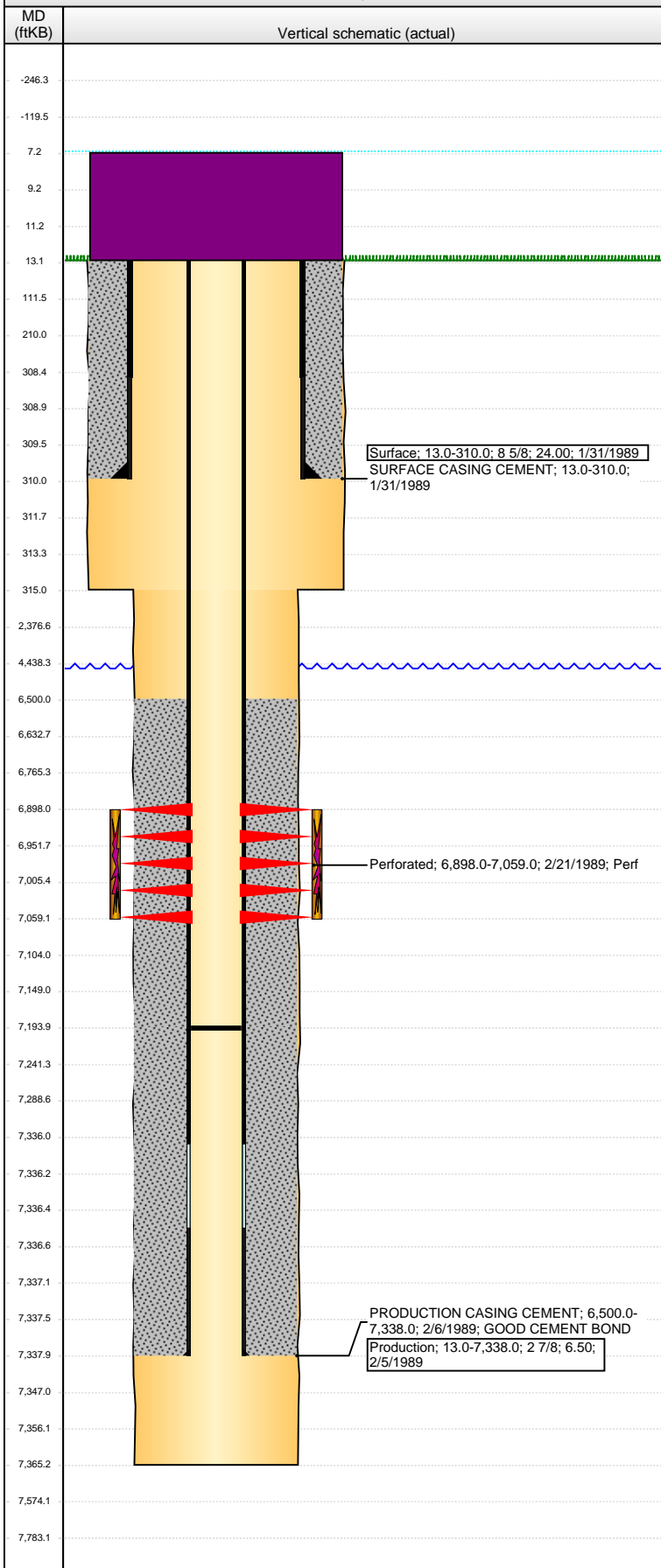


Well Name: OSTER PMG28-08

VERTICAL - ORIGINAL HOLE, 5/20/2014 8:45:16 AM



Well Header

API 05-123-14152	Business Unit WATTENBERG	District 15	Well Config VERTICAL
Original KB Elevation (ft) 4,811.00	KB - GL / MSL (ftKB) 13.00	Spud Date 1/31/1989	P & A Date

Comment

NO TUBING INFO AVAILABLE, VALIDATED ONLY FROM STATE REPORTS. PRODUCTION CASING WEIGHT REPORTED AS EITHER 6.5# & 7.8#, OR BOTH

Directions To Well

Congressional Location

Quarter 1	Quarter 2	Quarter 3	Quarter 4	Section	Township	Twntshp N...	Range	Rng E/W Dir
		SE	NE	28	4	N	65	W

Bottom Hole Location

North-South Distance (ft)	From N or S Line	East-West Distance (ft)	From E or W Line

Plug Back Total Depths

Date	Depth (ftKB)	Method	Com
2/13/1989	7,194.0	CASED HOLE LOG	CBL DEPTH LOGGER

Wellbore Sections

Section Des	Size (in)	Act Top, MD (ftKB)	Act Btm, MD (ftKB)
SURFACE	12 1/4	13.0	315.0
PRODUCTION	7 7/8	315.0	7,365.0

Zone Statuses

Zone Name	Status Date	Status	Job
NIOBRARA	3/14/1989	PR	DRILLING/COMPLETION - ORIGINAL, 1/31/1989 00:00

Casing Strings

Surface, 310.0ftKB

Casing Description	Run Date	OD (in)	Wt/Len (l...	Grade	Top, MD (ft...	MD (ftKB)
Surface	1/31/1989	8 5/8	24.00		13.0	310.0

Production, 7,338.0ftKB

Casing Description	Run Date	OD (in)	Wt/Len (l...	Grade	Top, MD (ft...	MD (ftKB)
Production	2/5/1989	2 7/8	6.50		13.0	7,338.0

Cement

Description	Top Depth (ftKB)	Bottom Depth (ftKB)
SURFACE CASING CEMENT	13.0	310.0
Description	Top Depth (ftKB)	Bottom Depth (ftKB)
PRODUCTION CASING CEMENT	6,500.0	7,338.0

Tubing Components

Item Des	OD (in)	Wt (lb/ft)	Grade	Jts	Len (ft)	Btm (ftKB)	Btm (TVD) (ftKB)

Perforation Data

Zone	Bnch/St g	Entered Shot Total	Top (ftKB)	Btm (ftKB)	Date
NIOBRARA, ORIGINAL HOLE		18	6,898.00	7,059.00	2/21/1989

Stimulations & Treatments

Date	Zone	Primary Job Type
2/23/1989	NIOBRARA, ORIGINAL HOLE	DRILLING/COMPLETION - ORIGINAL
Technical Result	Tech Result Details	Tech Result Note

Comment

FLUSHED W/ 2050 GAL AMMONIUM CHLORIDE

Other In Hole

Run Date	Des	OD (in)	Top (ftKB)	Btm (ftKB)

Logs

Date	Type	Top, MD (ftKB)	Btm, MD (ftKB)
2/5/1989	COMPENSATED DENSITY	4,295.0	7,376.0
2/13/1989	CBL/CCL/GR	6,350.0	7,189.0