

101 SOUTH SHERMAN P. O. BOX 1338
FORT MORGAN, COLORADO 8074005

INTERMOUNTAIN
SERVICES

CORRELATION GAMMA-RAY LOG
CEMENT BOND LOG
SEISMIC SPECTRUM

FILE NO.

COMPANY PETROMAX ENERGY CORPORATION

WELL 146 COMPANY NO. 14-1

FIELD

COUNTY WELD STATE COLORADO

LOCATION

SW-NW
660' FWL
1900' FNL

Other Services

SEC 14 TWP 6N RGE 66W

GROUND LEVEL

Elev 4795

Elevations
KB 4806
OF
GL 4795

Permanent Datum

KELLY BUSHING

11

ft Above Permanent Datum

Log Measured from

KELLY BUSHING

OF

4795

Date

12-14-83

Run No

ONE

Type Log

GAMMA-CEMENT BOND

Depth-Driller

7330

Depth-Logger

7289

Bottom Logged Interval

7281

Top Logged Interval

6500

Type Fluid in Hole

WATER

Salinity Ppm Cl

Density Lb/Gal

Level

FULL

Max Rec Temp Deg F

Oper Rig Time

PORTABLE MAST

Recorded By

ZACK

Witnessed By

MR. HAINES

Run

Bore Hole Record

Casing Record

No

Bit

From

To

Size

Wgt

From

To

12 1/4

000

317

8 5/8

24

000

317

7 7/8

317

7330

4 1/2

11.6

000

TD

REMARKS

R/A Log Type

GAMMA

T.C.

2.0

Sens Setting

200

API Units Div

20 P.D.

Truck or Unit No

T-1

Location

FT. MORGAN

Tool Series No

SIE

Tool Diam

3 1/8

Standoff Size

CENTRALIZED

Logging Speed

30'/MIN

CASING BOND

100

AMPLIFIED CASING BOND

25

MICROSECONDS

1100

RADIATION INTENSITY INCREASES

BONDING INCREASES

GAMMA RAY
API UNITS

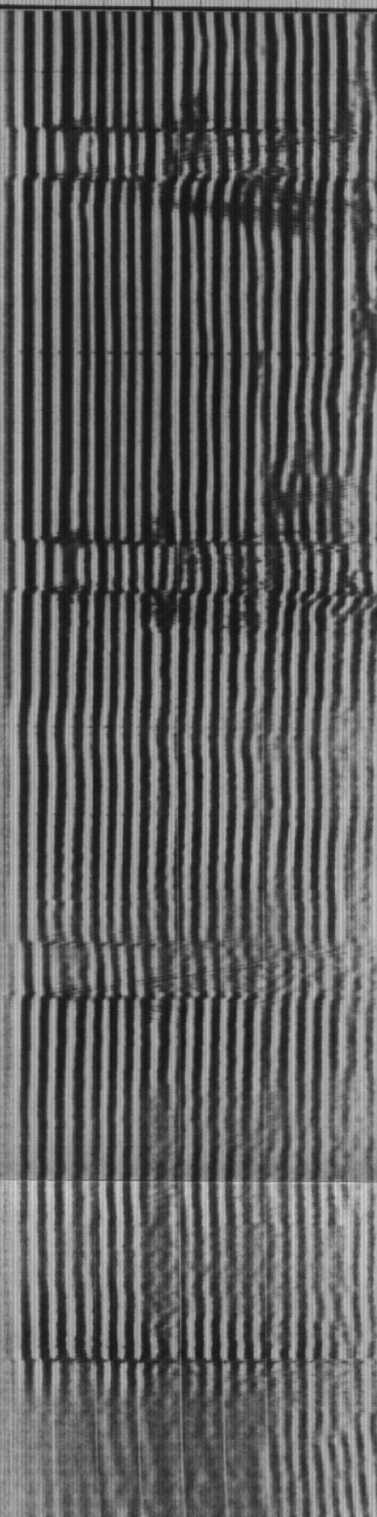
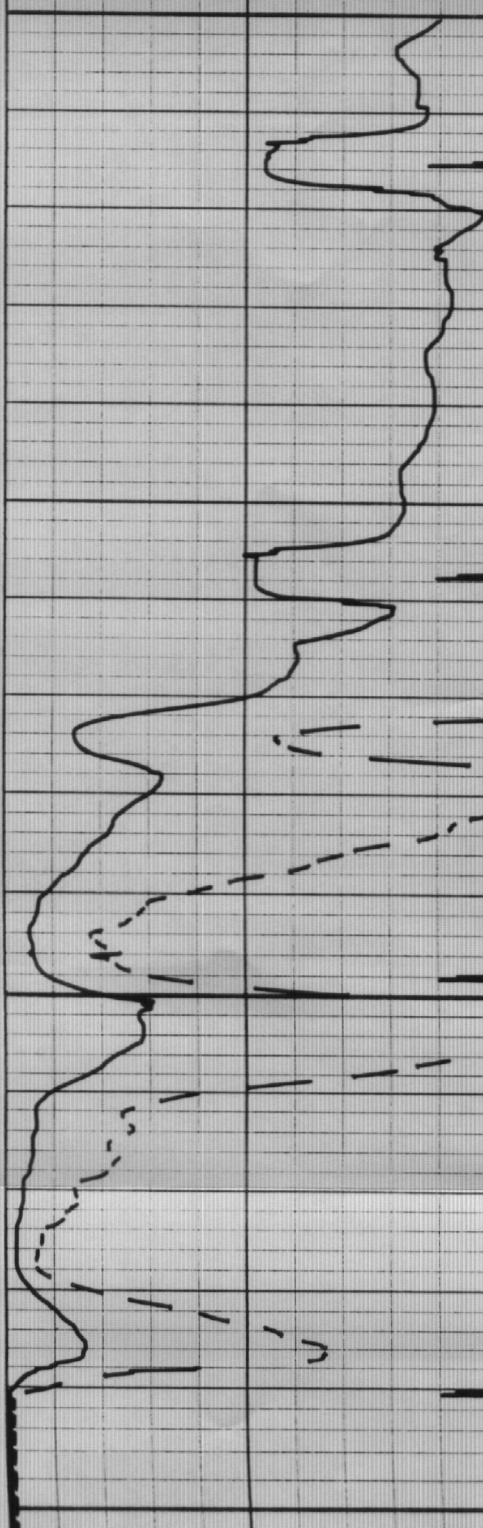
DEPTH

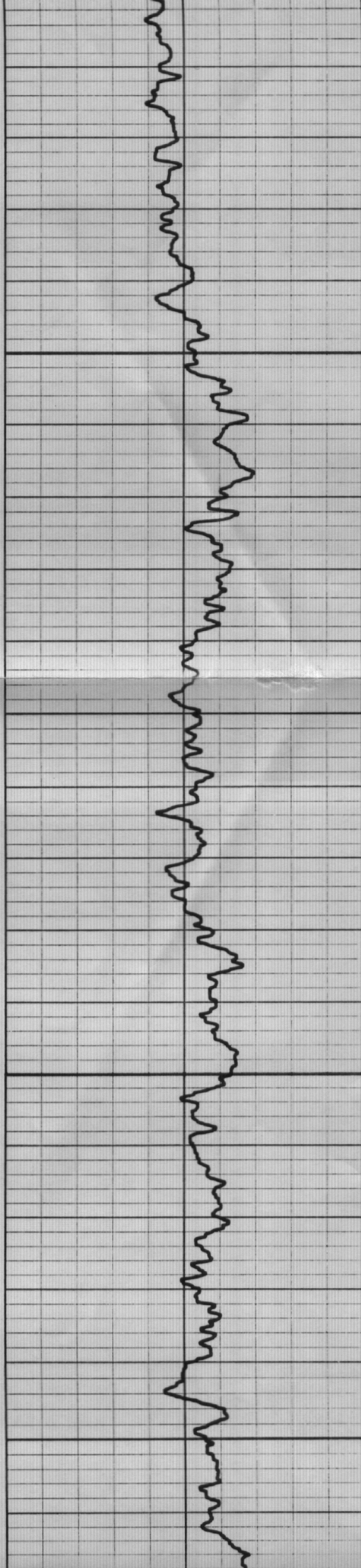
AMPLITUDE
MILLIVOLTS

SEISMIC SPECTRUM

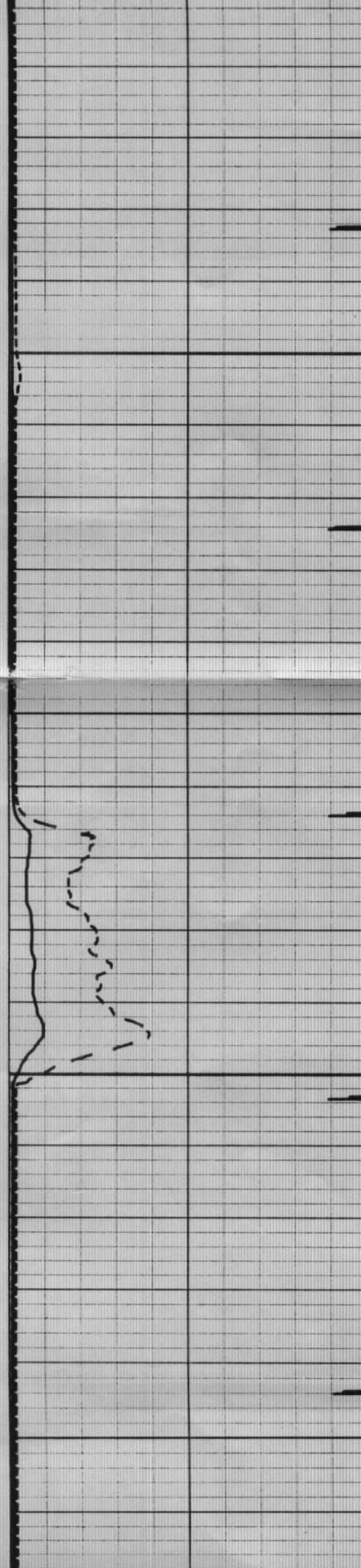
6500

6600

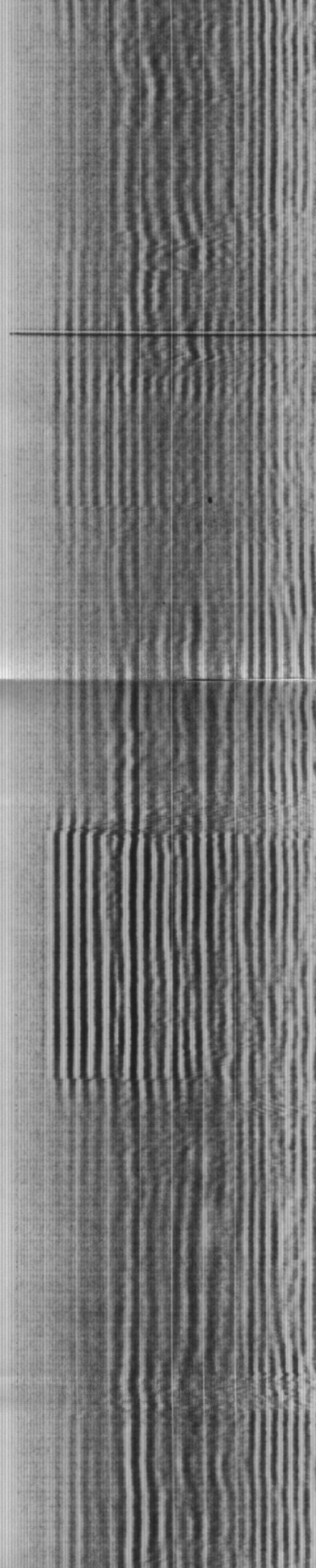




6700



6800



7100

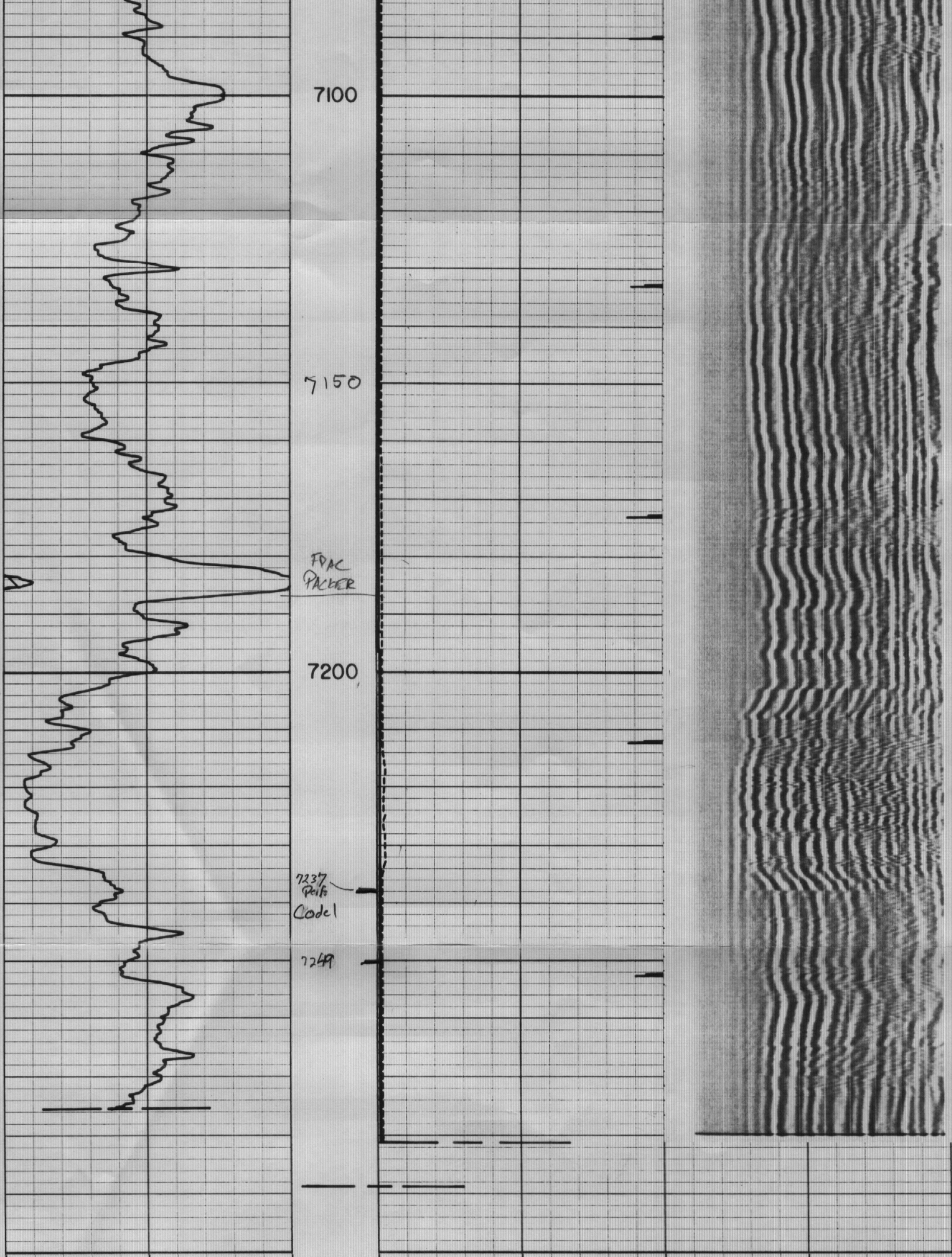
7150

FDAC
PACER

7200

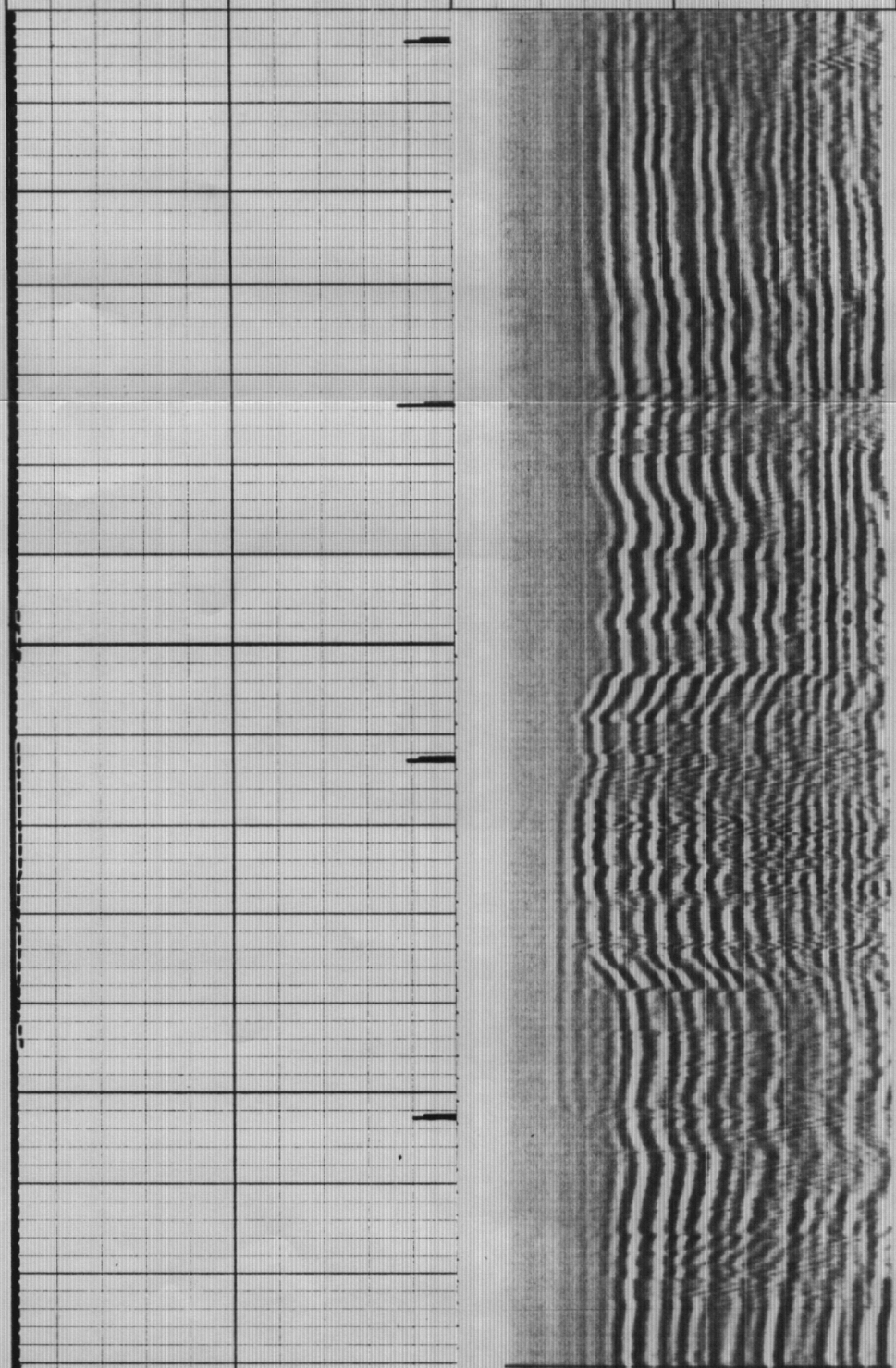
7237
Pelf
Code 1

7249



REPEAT SECTION

7200



0 200	200 400	0 100	CASING BOND	100 1100
RADIATION INTENSITY INCREASES		MICROSECONDS		
GAMMA RAY API UNITS		AMPLITUDE MILLIVOLTS		SEISMIC SPECTRUM
DEPTH		BONDING INCREASES		
Company PETROMAX ENERGY CORPORATION		Drillers T.D. 2330		
Well 146 COMPANY 14-1		Log T.D. 7289		
Field				
County WELD				
State COLORADO				

