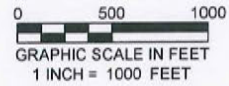
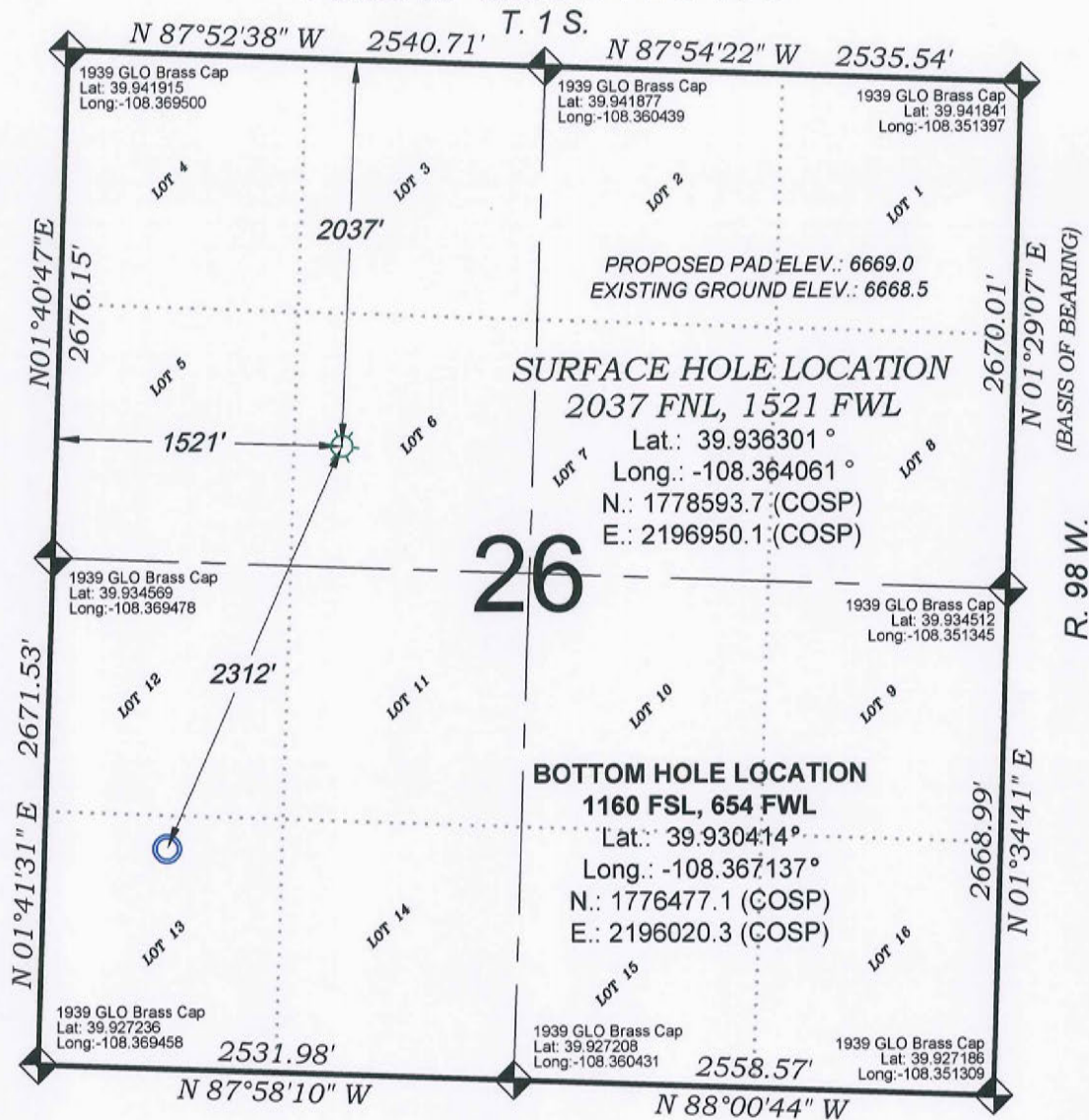


Federal RGU 14-26-198



THERE ARE NO VISIBLE
IMPROVEMENTS WITHIN 500'
OF THIS LOCATION

SURVEYORS STATEMENT

I, MICHAEL J. LANGHORNE, A REGISTERED LAND SURVEYOR IN THE STATE OF COLORADO DO HEREBY CERTIFY THAT THE SURVEY SHOWN HEREON WAS PREPARED UNDER MY DIRECT SUPERVISION AND HAS BEEN STAKED ON THE GROUND AS SHOWN ON THE PLAT AND CHECKING THAT THIS MAP IS A TRUE REPRESENTATION THEREOF.

Michael Langhorne
 36572
 COLORADO
 PROFESSIONAL LAND SURVEYOR

MICHAEL J. LANGHORNE, COLORADO REGISTRATION NO. 36572
 FOR AND ON BEHALF OF
 BOOKCLIFF SURVEY SERVICES, INC.

REFERENCES

- 1) DEPENDENT RESURVEY AND SUBDIVISION, T. 1 S., R. 99 W., 6 th P.M (BLM PLAT)
- 2) U.S.G.S. QUAD: Square S Ranch, CO

- LEGEND -

FIELD LOCATED SECTION
MONUMENTS AS DESCRIBED



FIELD SURVEYED
WELL LOCATION



CALCULATED BOTTOM
HOLE LOCATION



CALCULATED SECTION
CORNER LOCATION



NOTES

- 1) ELEVATIONS BASED ON N.A.V.D. 1988 PUBLISHED COORDINATES.
- 2) LATITUDES AND LONGITUDES ARE BASED ON NAD 83, PUBLISHED COORDINATES
- 3) STATE PLANE COORDINATES ARE BASED ON COLORADO CENTRAL ZONE, U.S. SURVEY FEET.
- 4) ELEVATION MASK SET TO 15°
- 5) GPS OPERATOR J. KIRKPATRICK, OBSERVED A PDOP OF 1.9 FOR SURVEY POINT NUMBER 179.
- 6) SURFACE AND BOTTOM HOLE LOCATIONS ARE MEASURED 90° FROM SECTION LINES.

WELL LOCATION PLAT Prepared for:
WPXENERGY. WPX Energy Rocky Mountain, LLC

SE1/4 NW1/4, SECTION 26
 T. 1 S., R. 98 W. of the 6th. P.M.
 Rio BLANCO COUNTY, COLORADO

SURVEY DATE: 9/18/13
 MAP DATE: 9/19/13
 SCALE: 1" = 1000'
 PLAT: 1 of 1
 PROJECT: Highlands

