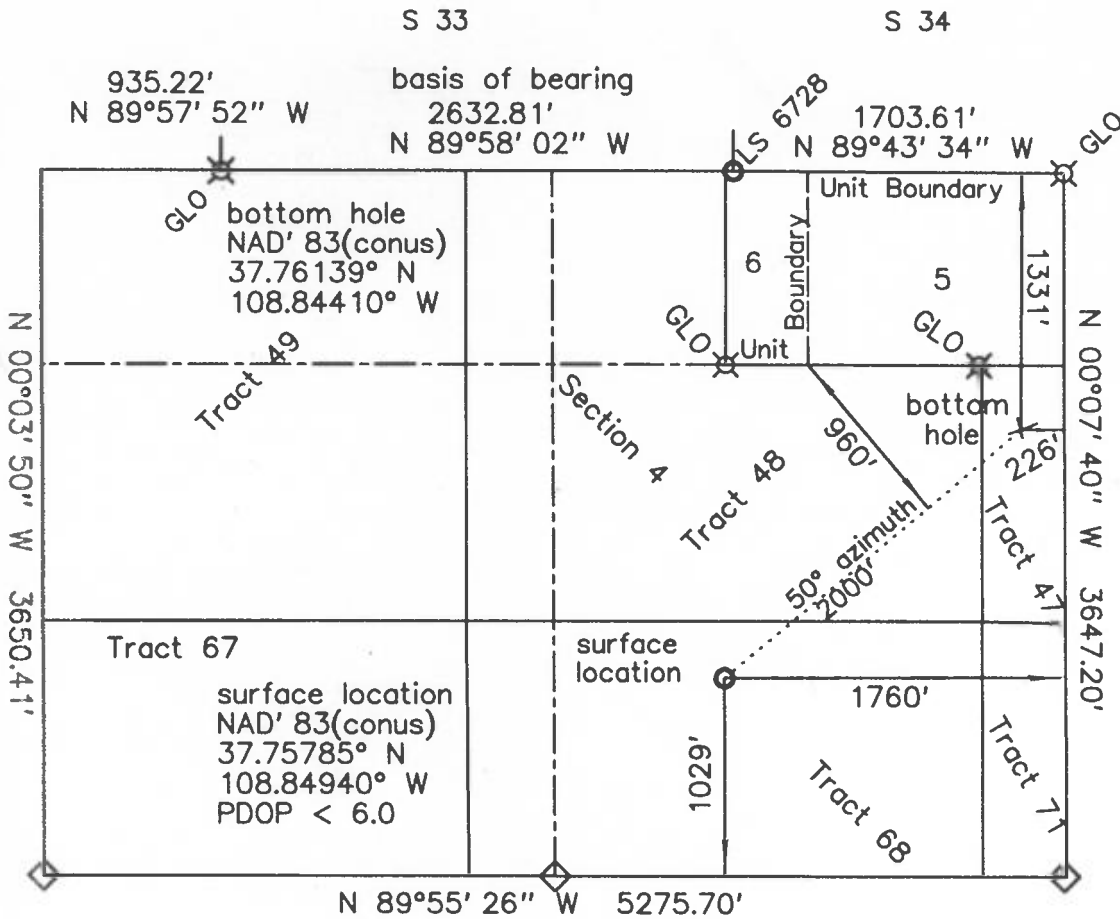


T.41 N., R.18 W.



0' 1000'

Scale: 1" = 1000'

Basis of bearing is assumed from GPS True North, as shown.

- ⊗ standard GLO/BLM monument
- set standard monument
- ◇ calculated by proportion in crop field not set
- found standard monument
- \* from GLO/BLM
- \*\* calculated

KINDER MORGAN CO2 COMPANY, LP  
 Doe Canyon # 17  
 1029' FSL & 1760' FEL — surface location  
 Section 4, T.40 N., R.18 W., NMPM  
 Dolores County, CO  
 7152.8' grd. el. NAVD '88 (from OPUS)  
 1331' FNL & 226' FEL — bottom hole  
 Section 4, T.40 N., R.18 W., NMPM

## Notes:

- 1) Distances/dimensions are perpendicular to section/aliquot lines.
- 2) Surface use is Fee, dryland crop.
- 3) GPS was corrected by OPUS, instrument operator was R.J. Caffey, CO LS 36562.
- 4) There is an occupied residence within 1000 feet (860 feet), and a road and power line within 260 feet.



KNOW ALL MEN BY THESE PRESENTS that I, GERALD G. HUDDLESTON, do hereby certify that this plat was prepared from field notes of an actual survey made by me or under my supervision and that the same is true and accurate to the best of my knowledge and belief.

date of survey:  
 03/25/2014  
 03/31/2014  
 date of plat:  
 03/31/2014