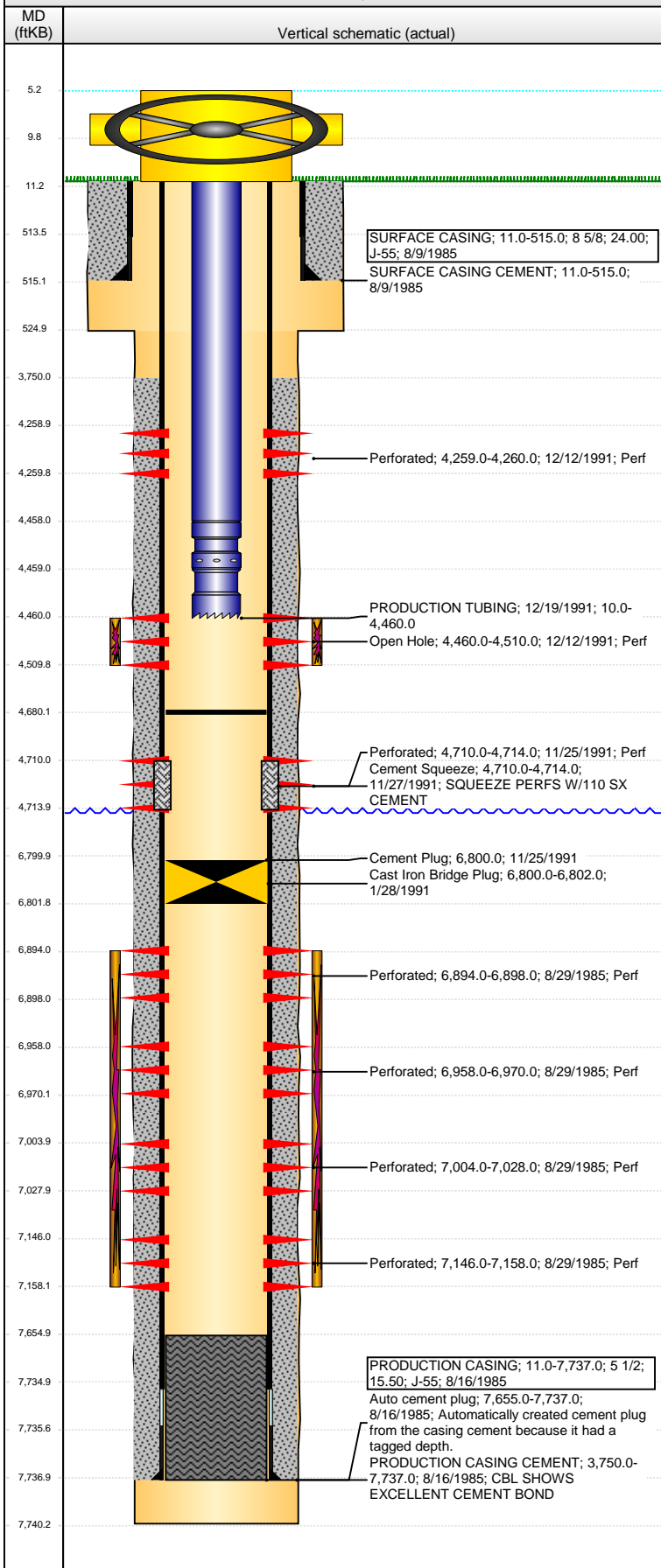


Well Name: UPRR 39 PAN AM E 1

VERTICAL - ORIGINAL HOLE, 5/16/2014 7:15:39 AM



Well Header

API	Business Unit	District	Well Config
05-123-12548	WATTENBERG	15	VERTICAL
Original KB Elevation (ft)	KB - GL / MSL (ftKB)	Spud Date	P & A Date
4,855.00	11.00	8/9/1985	

Comment

Directions To Well

Congressional Location

Quarter 1	Quarter 2	Quarter 3	Quarter 4	Section	Township	Twonshp N...	Range	Rng E/W Dir
		NE	NW	1	3	N	65	W

Bottom Hole Location

North-South Distance (ft)	From N or S Line	East-West Distance (ft)	From E or W Line

Plug Back Total Depths

Date	Depth (ftKB)	Method	Com
2/17/1992	4,680.0	TAG	Prior information was taken from wrong well report

Wellbore Sections

Section Des	Size (in)	Act Top, MD (ftKB)	Act Btm, MD (ftKB)
SURFACE	12 1/4	11.0	525.0
PRODUCTION	7 7/8	525.0	7,740.0

Zone Statuses

Zone Name	Status Date	Status	Job
SUSSEX		PR	
CODELL	11/25/1991	P&A	
NIOBRARA	11/25/1991	P&A	
NIOBRARA-CODELL	11/25/1991	P&A	

Casing Strings

SURFACE CASING, 515.0ftKB

Casing Description	Run Date	OD (in)	W/Len (l...	Grade	Top, MD (ft...	MD (ftKB)
SURFACE CASING	8/9/1985	8 5/8	24.00	J-55	11.0	515.0

PRODUCTION CASING, 7,737.0ftKB

Casing Description	Run Date	OD (in)	W/Len (l...	Grade	Top, MD (ft...	MD (ftKB)
PRODUCTION CASING	8/16/1985	5 1/2	15.50	J-55	11.0	7,737.0

Cement

Description	Top Depth (ftKB)	Bottom Depth (ftKB)
SURFACE CASING CEMENT	11.0	515.0
Description	Top Depth (ftKB)	Bottom Depth (ftKB)
PRODUCTION CASING CEMENT	3,750.0	7,737.0
Description	Top Depth (ftKB)	Bottom Depth (ftKB)
Cement Plug	6,800.0	
Description	Top Depth (ftKB)	Bottom Depth (ftKB)
Cement Squeeze	4,710.0	4,714.0

Tubing Components

Item Des	OD (in)	Wt (lb/ft)	Grade	Jts	Len (ft)	Btm (ftKB)	Btm (TVD) (ftKB)
Tubing	2 3/8	4.70	J-55		4,448.00	4,458.0	
Seal Nipple	2 3/8				1.00	4,459.0	
Notched collar	2 3/8				1.00	4,460.0	

Perforation Data

Zone	Bnch/St g	Entered Shot Total	Top (ftKB)	Btm (ftKB)	Date
SUSSEX, ORIGINAL HOLE		2	4,259.00	4,260.00	12/12/1991
SUSSEX, ORIGINAL HOLE		200	4,460.00	4,510.00	12/12/1991
SUSSEX, ORIGINAL HOLE		16	4,710.00	4,714.00	11/25/1991
NIOBRARA, ORIGINAL HOLE	A	3	6,894.00	6,898.00	8/29/1985
NIOBRARA, ORIGINAL HOLE	B	4	6,958.00	6,970.00	8/29/1985
NIOBRARA, ORIGINAL HOLE	C	5	7,004.00	7,028.00	8/29/1985
CODELL, ORIGINAL HOLE		4	7,146.00	7,158.00	8/29/1985

Stimulations & Treatments

Date	Zone	Primary Job Type
9/2/1985	NIOBRARA-CODELL, ORIGINAL HOLE	
Technical Result	Tech Result Details	Tech Result Note

Comment

Well Name: UPRR 39 PAN AM E 1

VERTICAL - ORIGINAL HOLE, 5/16/2014 7:15:42 AM

Stimulations & Treatments

Date 12/13/1991	Zone SUSSEX, ORIGINAL HOLE	Primary Job Type
Technical Result	Tech Result Details	Tech Result Note
Comment		

Other In Hole

Run Date	Des	OD (in)	Top (ftKB)	Btm (ftKB)
1/28/1991	Cast Iron Bridge Plug	4.95	6,800.0	6,802.0

Logs

Date	Type	Top, MD (ftKB)	Btm, MD (ftKB)

