

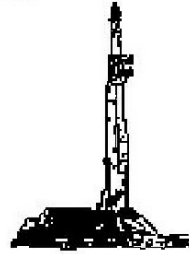
GOOLSBY BROTHERS
and associates, inc.

575 Union Blvd, Suite 208
Lakewood, CO 80228
303-945-2860 Office



Geological Wellsite
Supervision

www.goolsbybrothers.com



Scale 1:240 (5"=100') Imperial
Measured Depth Log

Well Name: NRC 29N-8HZ
Well Id:
Location: Sec. 8 T1N R67W Weld County, CO.
License Number: API:0512338951 AFE: 2085767
Spud Date: March 17, 2014
Surface Coordinates: 402' FSL, 2245' FWL
Lat. xxxxxx, Lon. -xxxxx, Sec.x, TxNRxxW
Region: Wattenberg
Drilling Completed: Marchxx, 2014
Bottom Hole
Coordinates:
Ground Elevation (ft): 5052' K.B. Elevation (ft): 5077'
Logged Interval (ft): 6600 To: xxxx Total Depth (ft): xxxx
Formation: Niobrara 'B'
Type of Drilling Fluid: LSND (Polymer-Water)

Printed by HORIZONTAL.LOG from WellSight Systems 1-800-447-1534 www.WellSight.com

OPERATOR

Company: Anadarko Petroleum Corporation
Address: Granite Tower - 1099 18th St, Ste 1800
Denver, CO 80202
CO Geologist, Tom Birmingham.

GEOLOGIST

Name: George Bejan, Dan Kabala
Company: Goolsby Brothers & Assoc. (GBA), Inc. (www.goolsbybrothers.com)
Address: 575 Union Blvd.
Suite 208,
Lakewood CO. 80228

E-logs

MWD Gamma

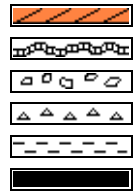
Casing

9 5/8" Surface Casing (IPSCO 36# J55) set @ 1,243'.
7" Intermediate Casing (IPSCO 26# P110) set @ 7911'.
4 1/2" Production Liner set @ xxxx'

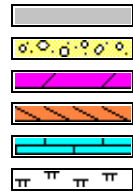
Comments

Drilling Contractor: H&P 311
Pumps 1 & 2: Gardner Denver PZ 11 6" x 11" (.0914 bbl/stk)
Rig Manager: Jack Truett, James Baggett.
Drillers: Richard Norton, Christopher Beckstead

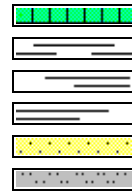
ROCK TYPES



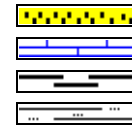
Anhy
Bent
Brec
Cht
Clyst
Coal



Oil sat.
Congl
Dol
Gyp
Lmst
Mrlst



Salt
Shale
Shcol
Shgy
Ss
Sltst



Ss
Chalk
Carb sh
Sltly sh

ACCESSORIES

MINERAL

	Anhy
	Arggrn
	Arg
	Bent
	Bit
	Brecfrag
	Calc
	Carb
	Chtdk
	Chtlit
	Dol
	Feldspar
	Ferrpel
	Ferr
	Glau
	Gyp
	Hvymin
	Kaol
	Marl

	Minxl
	Nodule
	Phos
	Pyr
	Salt
	Sandy
	Silt
	Sil
	Sulphur
	Tuff

FOSSIL

	Algae
	Amph
	Belm
	Bioclst
	Brach
	Bryozoa
	Cephal
	Coral

	Crin
	Echin
	Fish
	Foram
	Fossil
	Gastro
	Oolite
	Ostra
	Pelec
	Pellet
	Pisolite
	Plant
	Strom

STRINGER

	Chlkstg
	Anhy
	Arg
	Bent
	Coal

	Dol
	Gyp
	Ls
	Mrst
	Sltstrg
	Ssstrg

TEXTURE

	Boundst
	Chalky
	Cryxln
	Earthy
	Finexln
	Grainst
	Lithogr
	Microxln
	Mudst
	Packst
	Wackest

OTHER SYMBOLS

OIL SHOWS

	Even
	Spotted
	Ques
	Dead
	Vspotty
	near even

POROSITY TYPE

	Earthy
	Fenest
	Fracture
	Inter
	Moldic
	Organic

	Pinpoint
	Vuggy

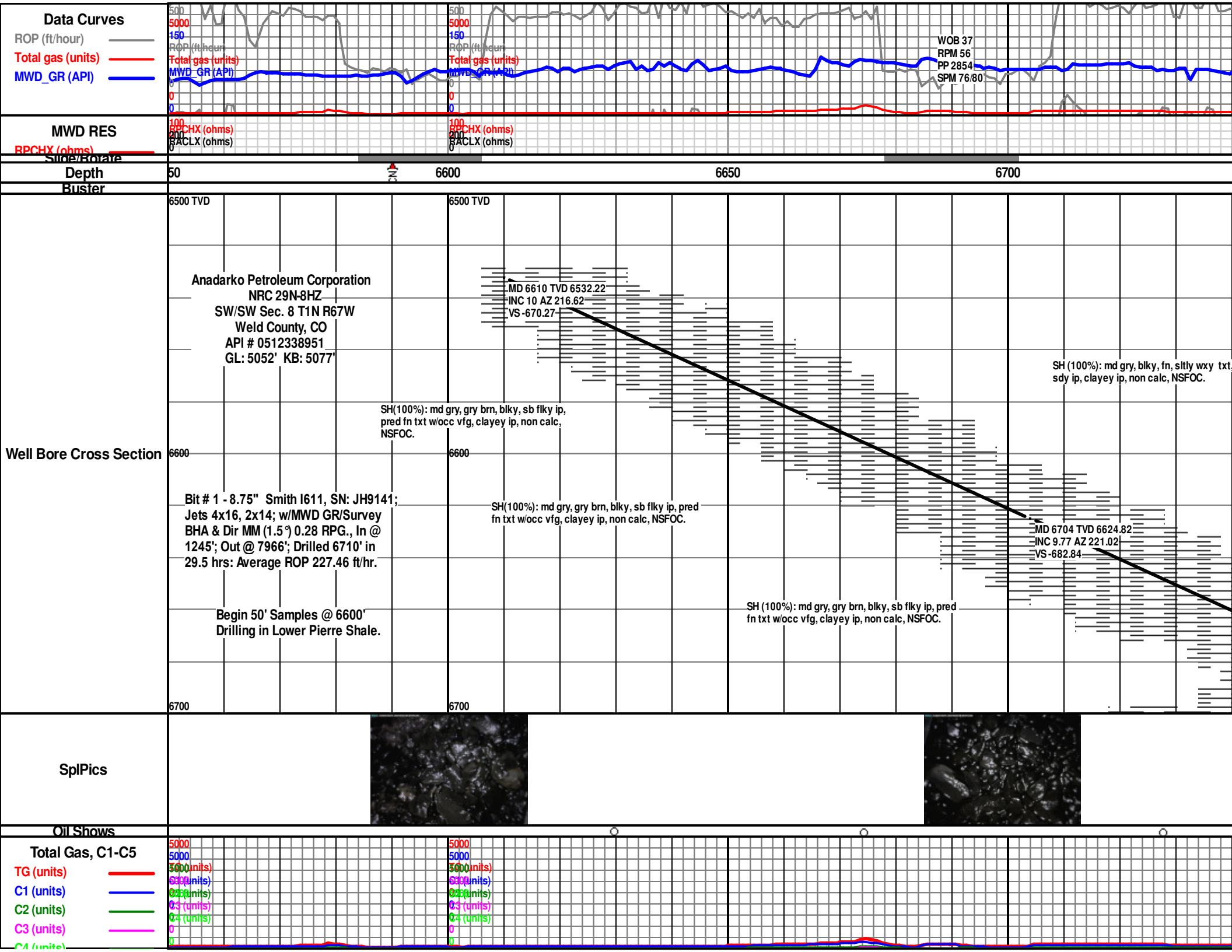
ROUNDING

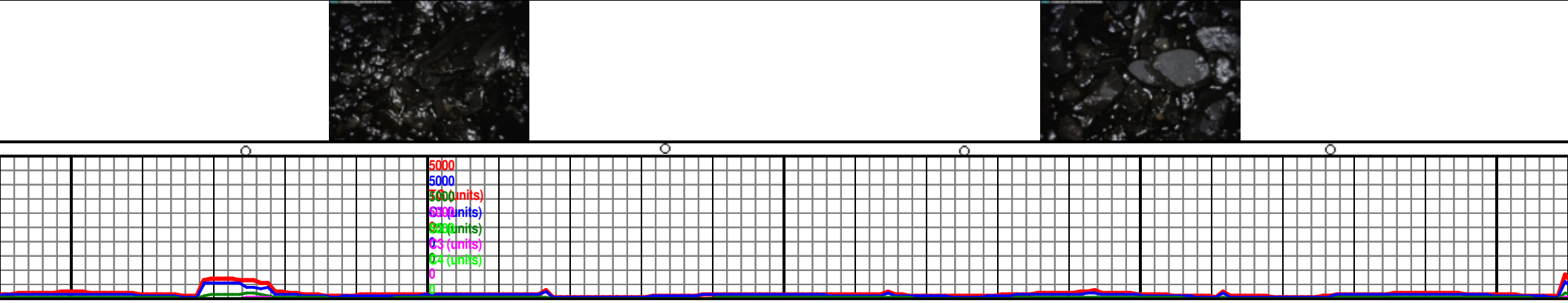
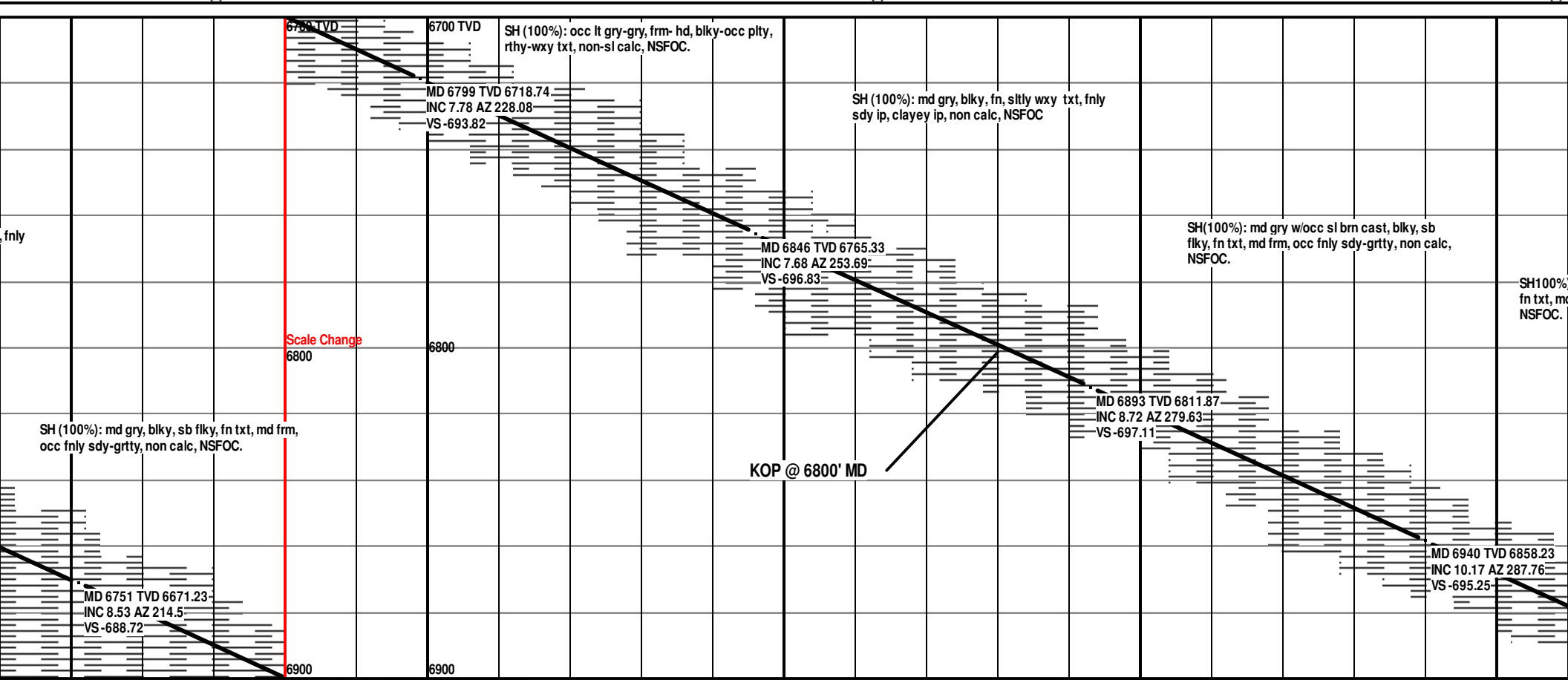
	Rounded
	Subrnd
	Subang

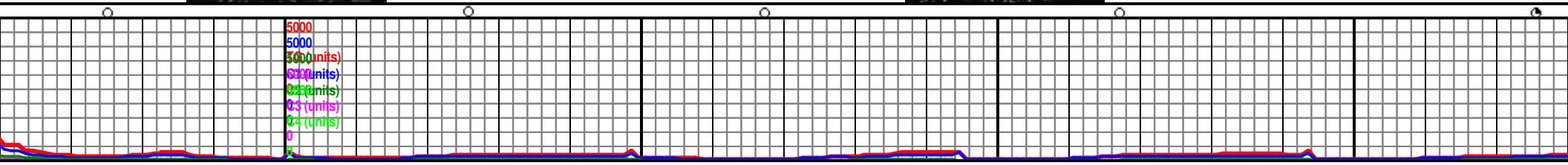
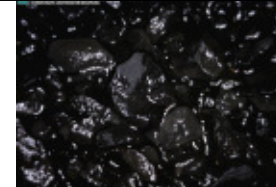
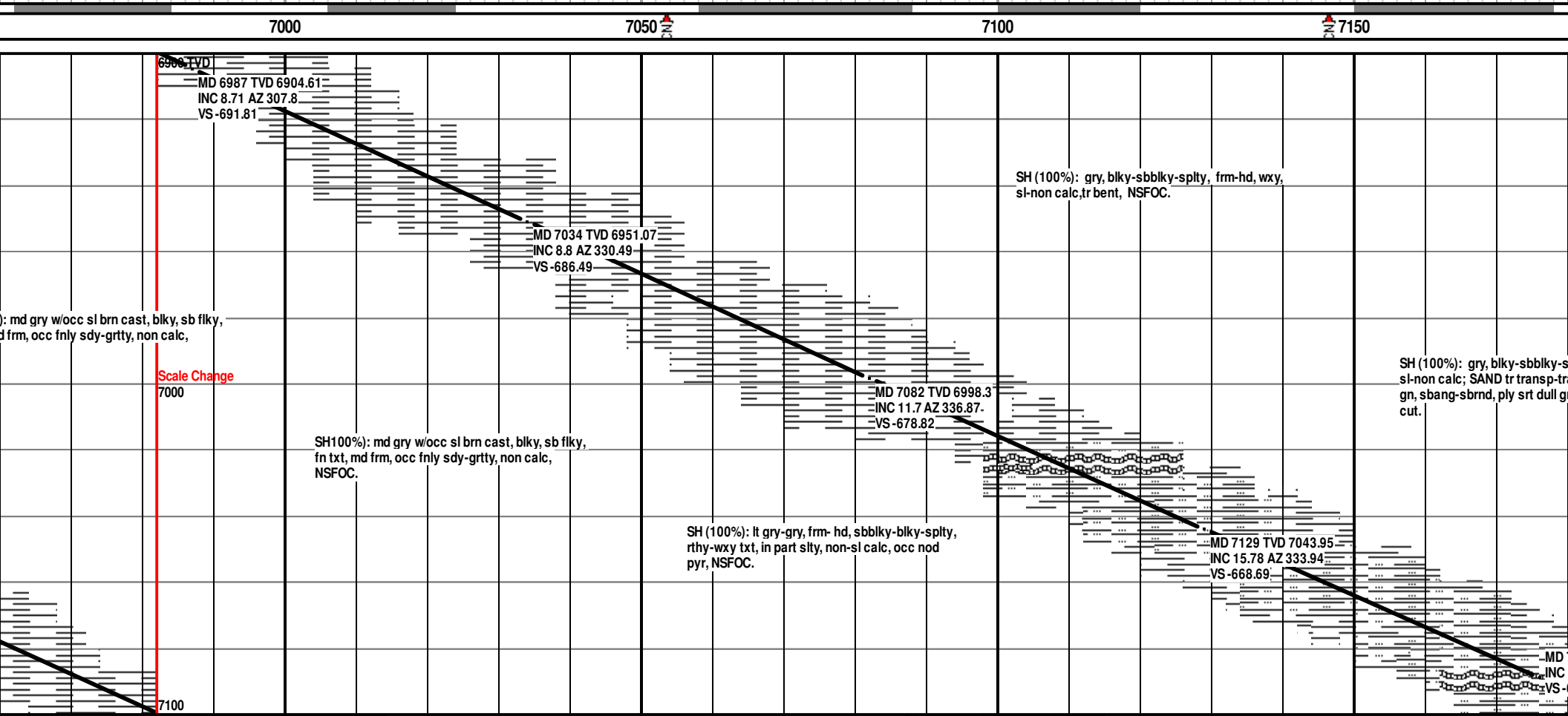
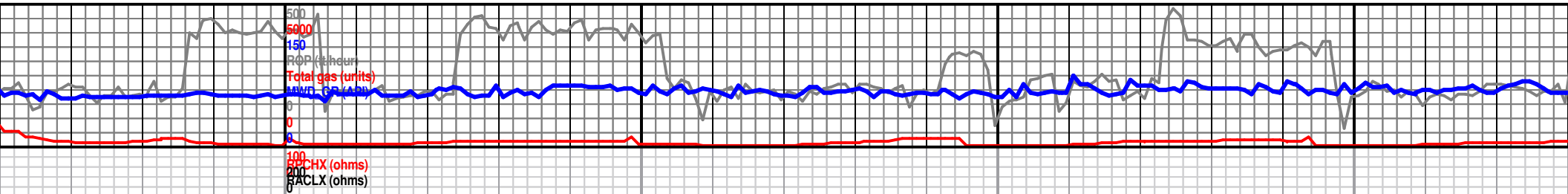
	Angular
--	---------

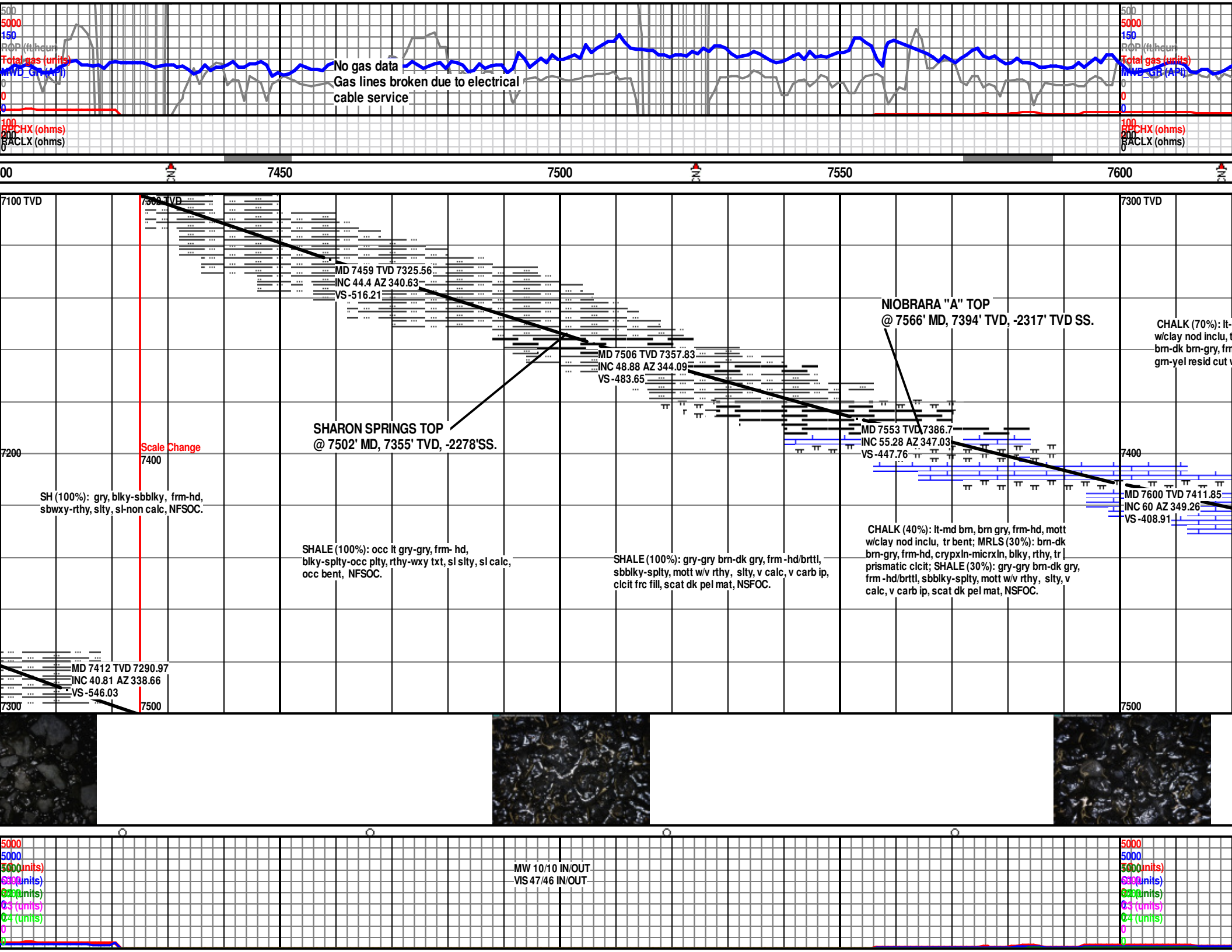
SORTING

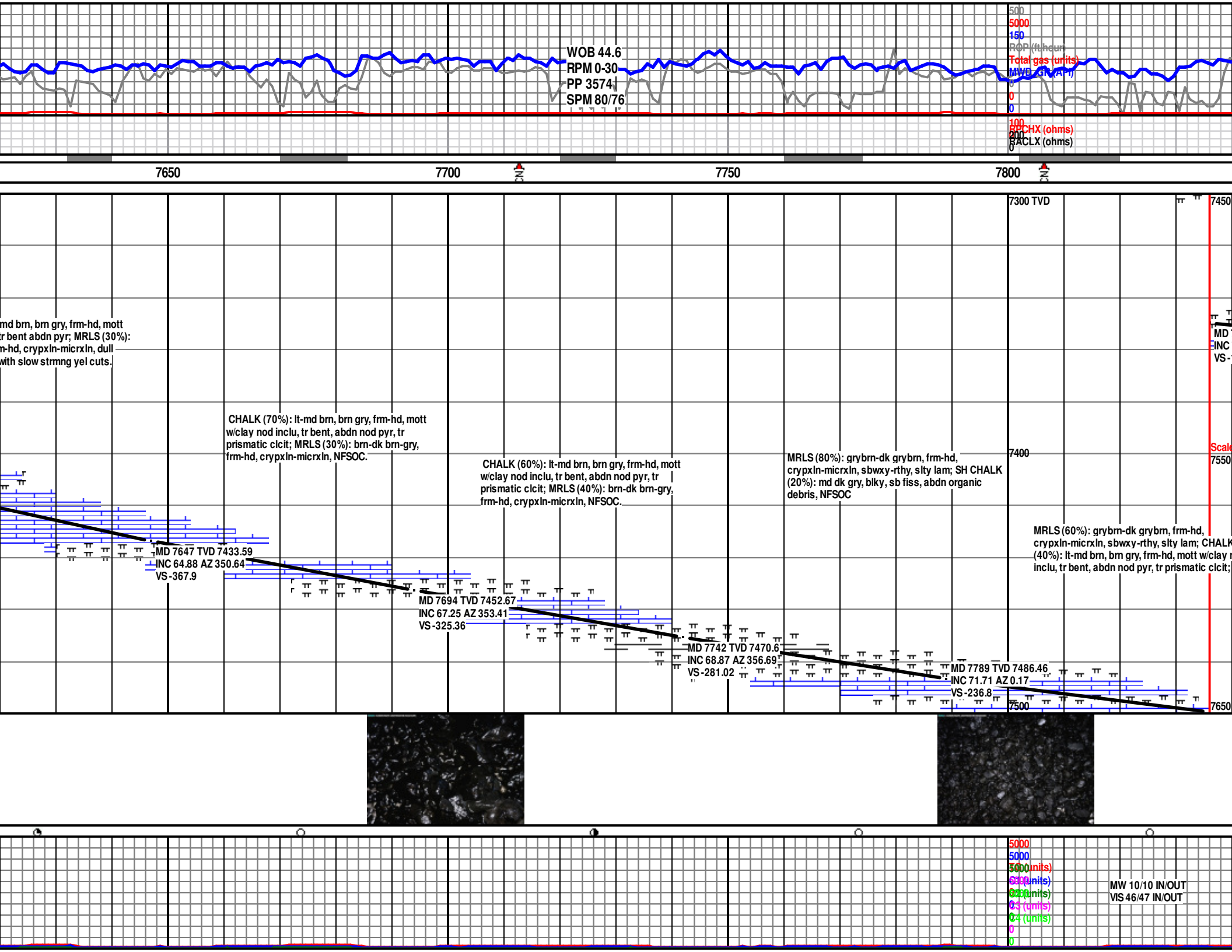
	Well
	Moderate
	Poor

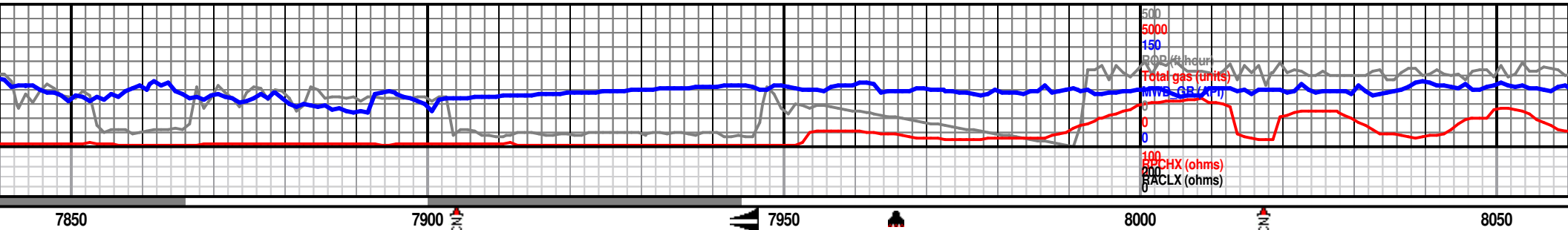




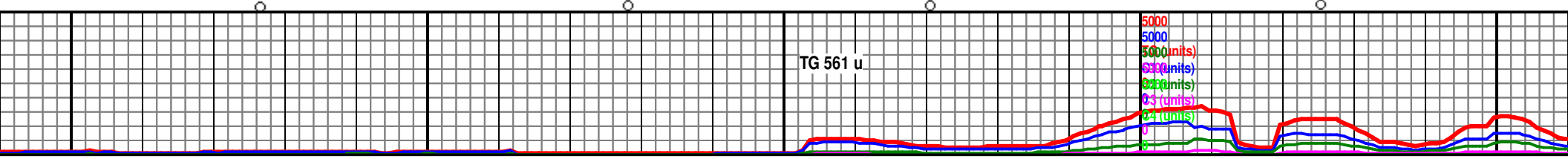


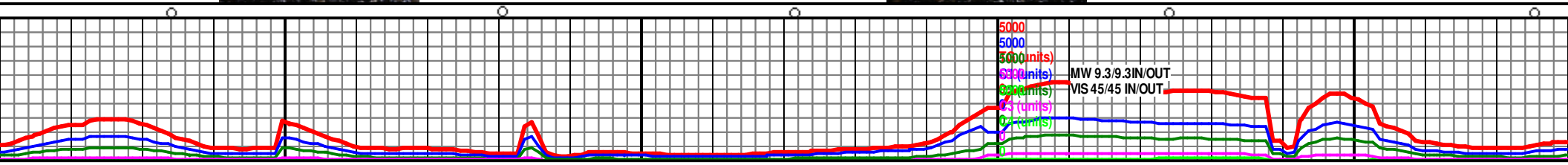
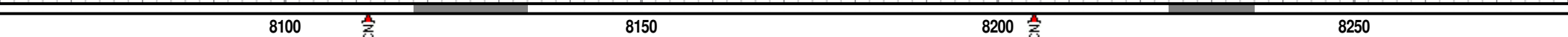


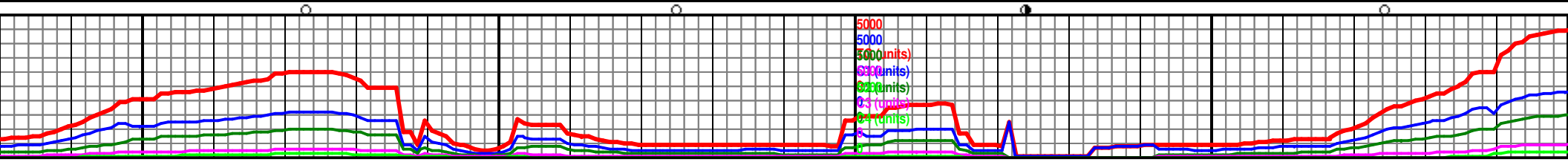
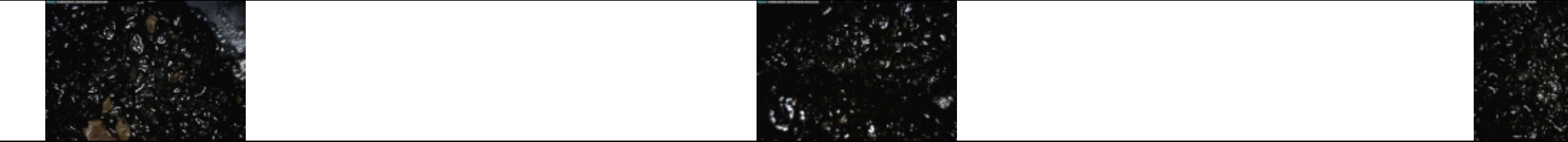
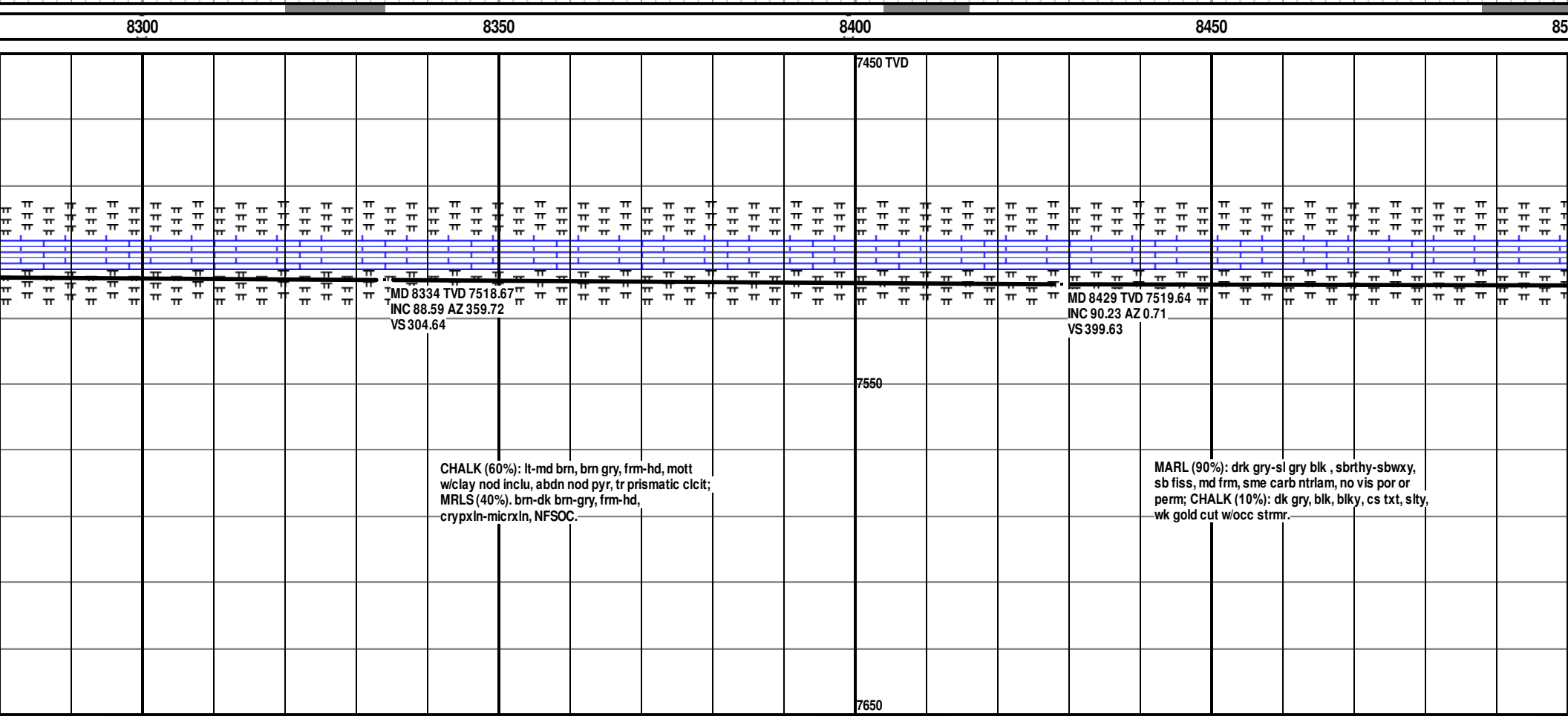
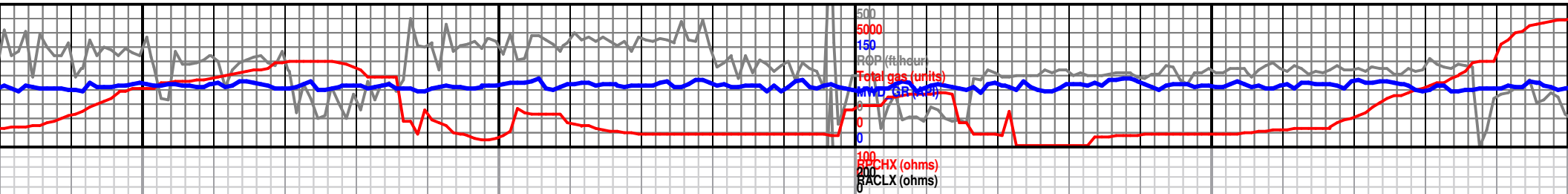


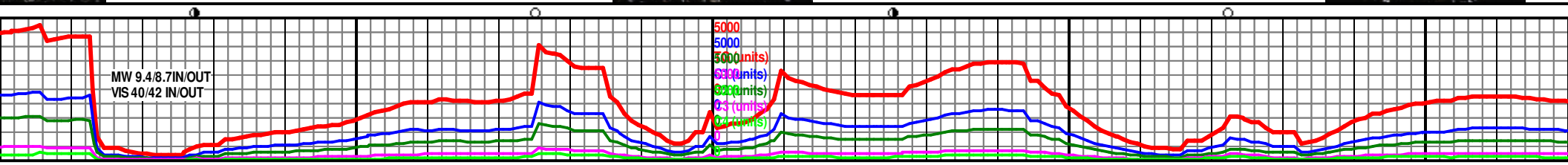
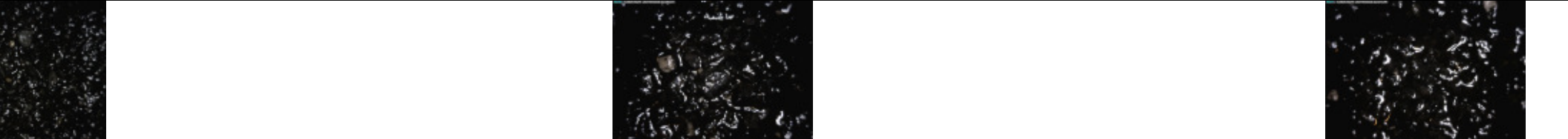
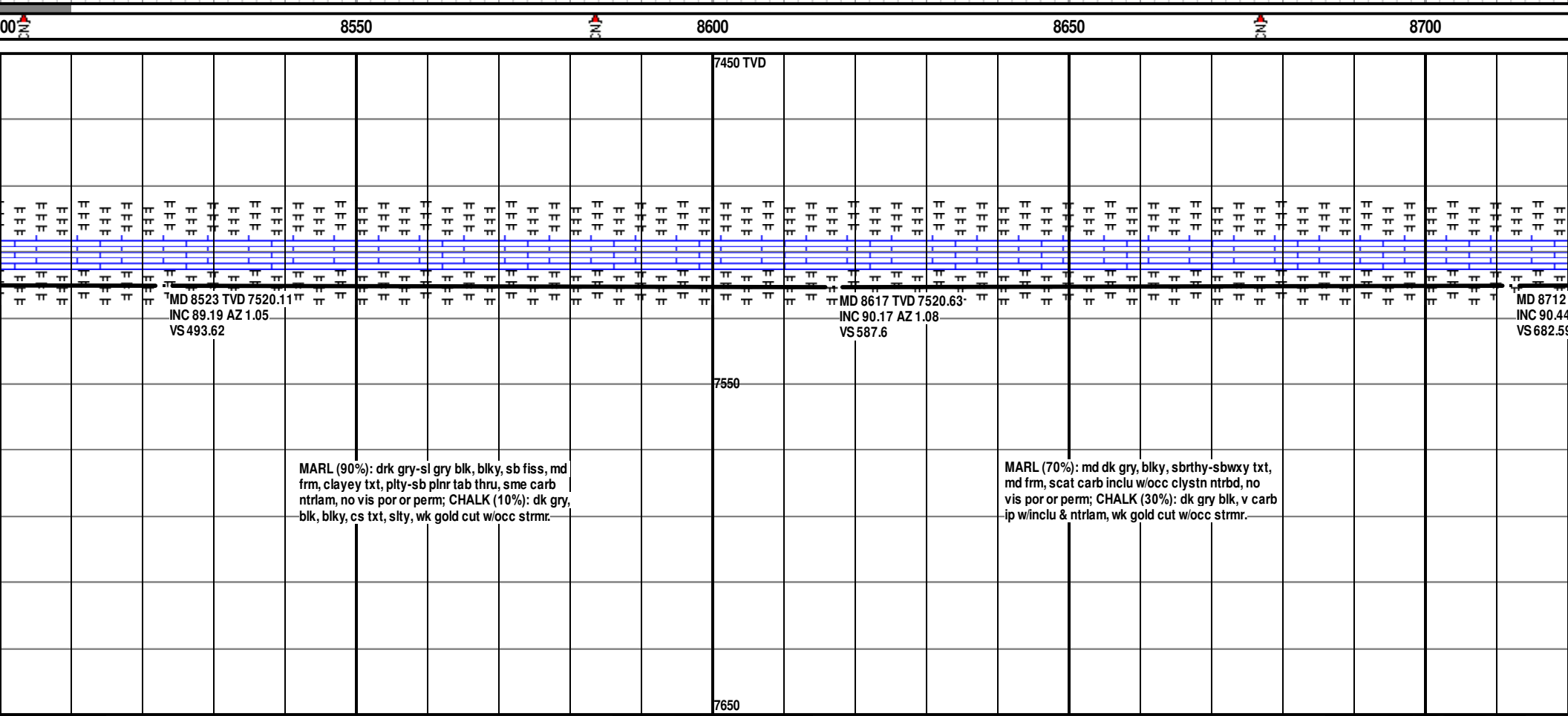
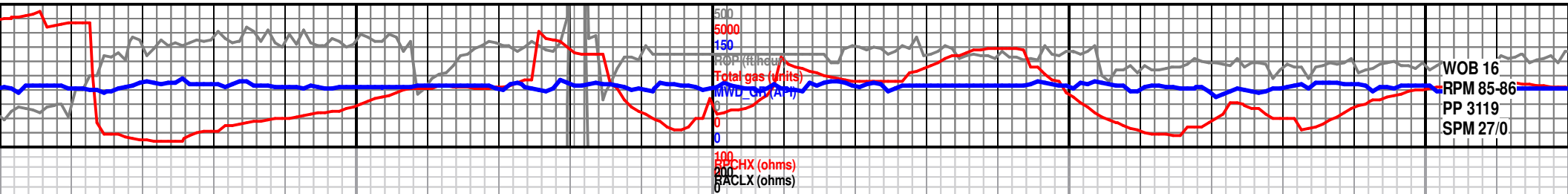


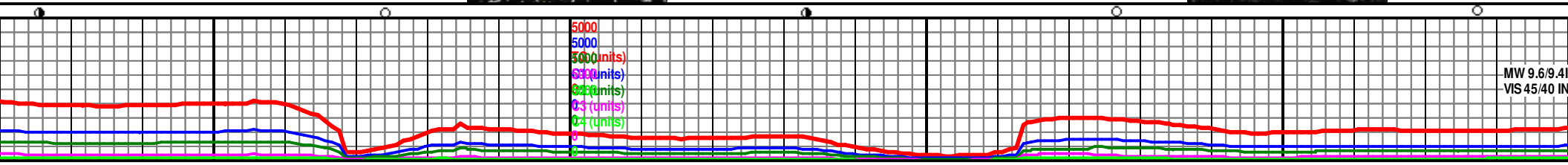
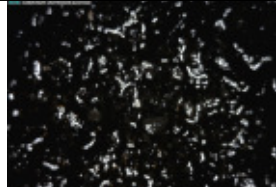
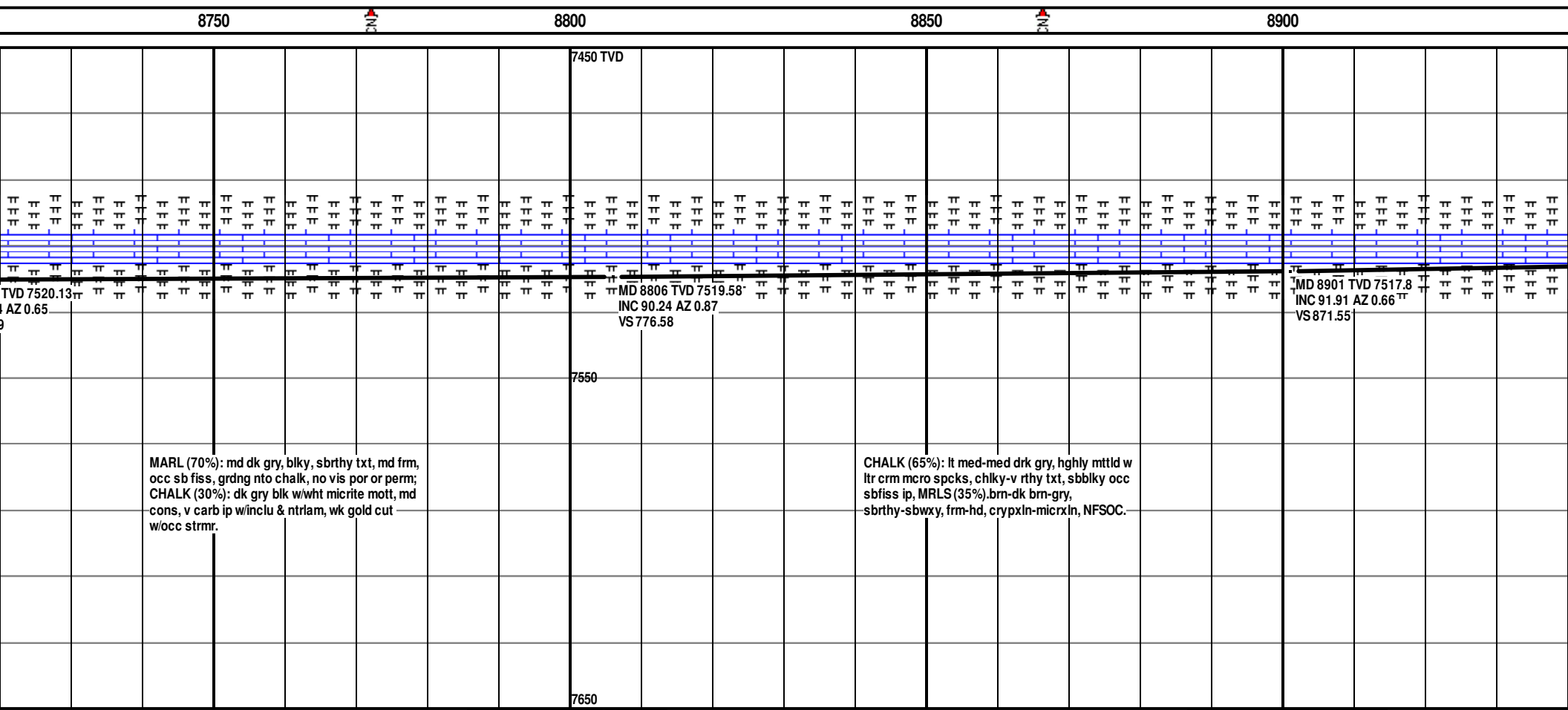
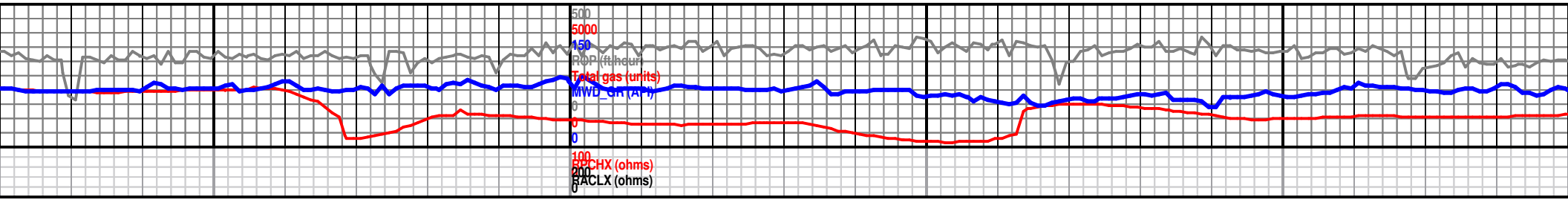
<p>CHALK (70%): lt med-med drk gry, hghly mttld w ltr crm mcro spcks, chlky-v rthy txt, sbbkly occ sbfiss ip, mstly frm, sl crmbly, NFO, MRLS (30%). grybrn-dk grybrn, frm-hd, crypxln-micrxln, sbwxy-rthy, NFSOC.</p> <p>7836 TVD 7499.6 75.81 AZ 359.62 191.68</p> <p>MD 7883 TVD 7509.46 INC 79.95 AZ 358.81 VS -145.75</p> <p>NIOBRARA "B" TOP @ 7864' MD, 7506' TVD, -2429' TVD SS.</p>	<p>ICP AT 7943' REACHED ON 03/19/14 @ 17:45 HRS. CONDITION HOLE, TOH, 7" CASING, SET @ 7943', WT: 26 ppf; Grade: HCP110, SET @ MD 7943'.</p>	<p>Bit # 2 - 6.125" Smith SDI513, SN: JH6871; Jets 4x16, 2x14; w/MWD GR/Survey BHA & Dir MM (1.5°) 0.28 RPG., In @ 7955'; Out @ xxxx'; Drilled xxx' in xxx hrs: Average ROP xxxx ft/hr.</p> <p>MD 7957 TVD 7516.84 INC 88.59 AZ 359.04 VS -72.2</p>	<p>MD 8051 T INC 90.71 VS 21.76</p>
--	--	---	---

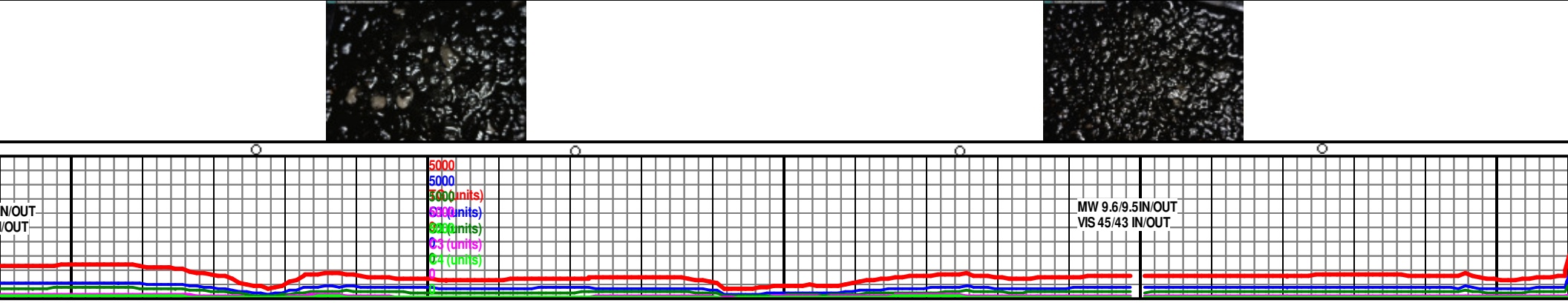
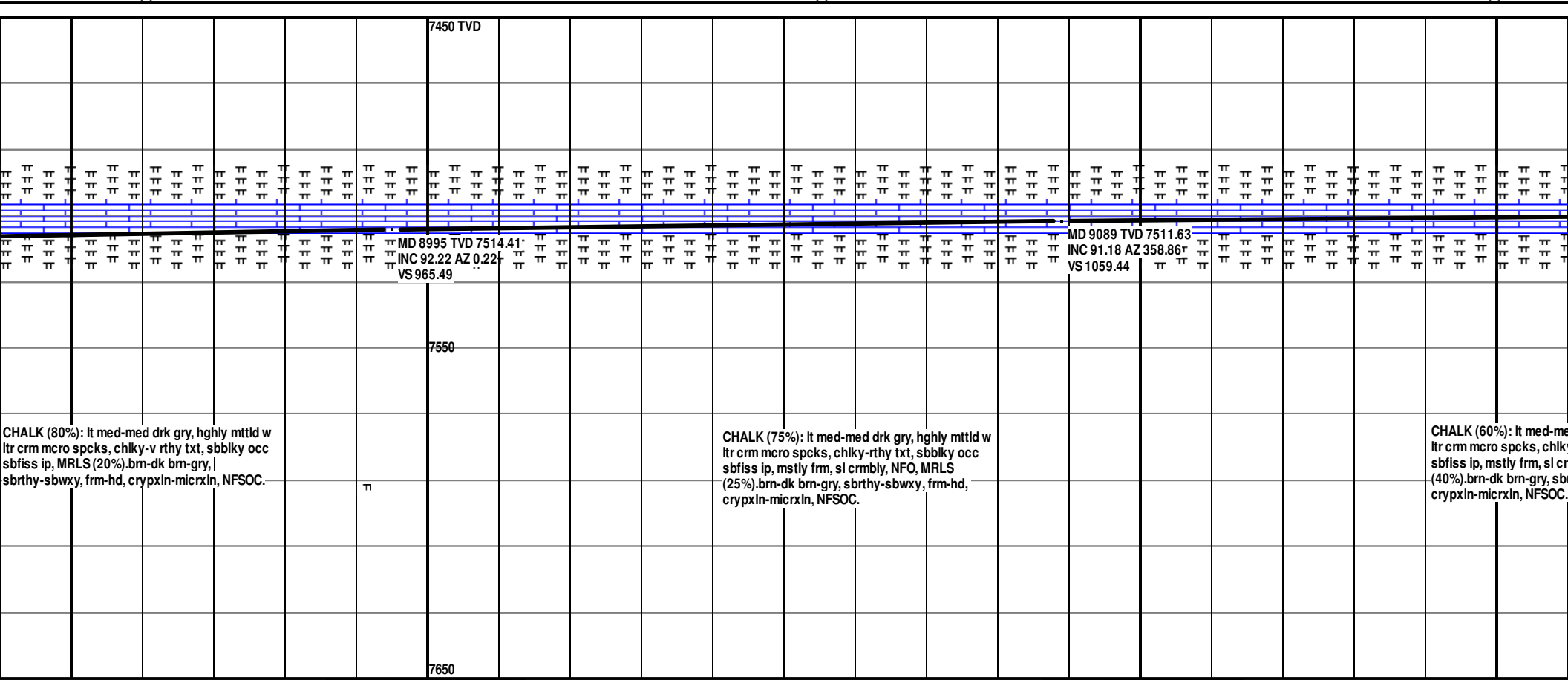


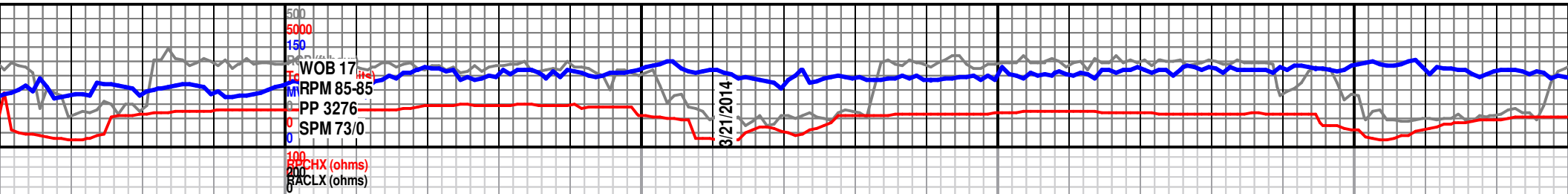




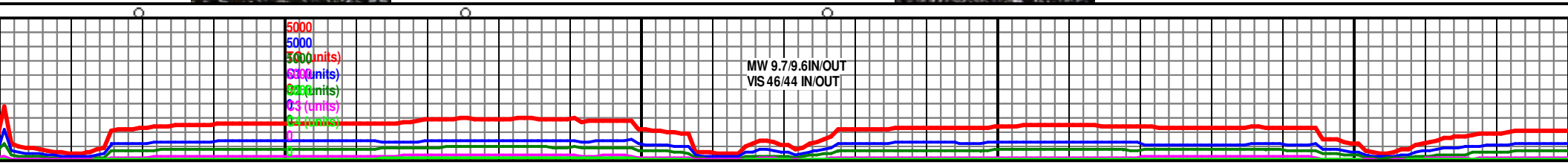
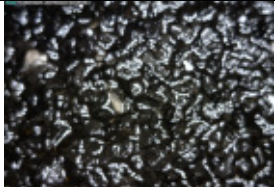


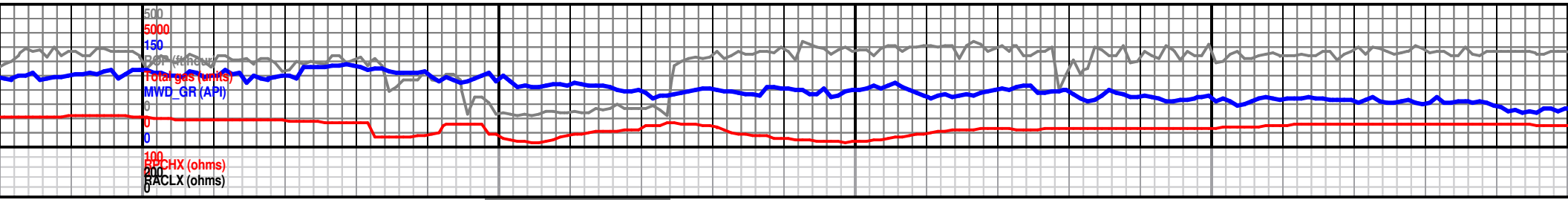




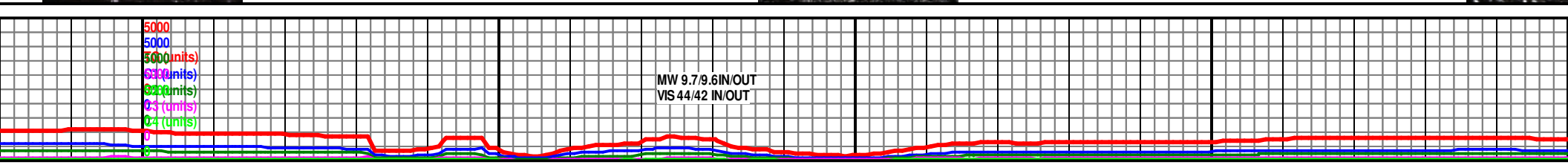


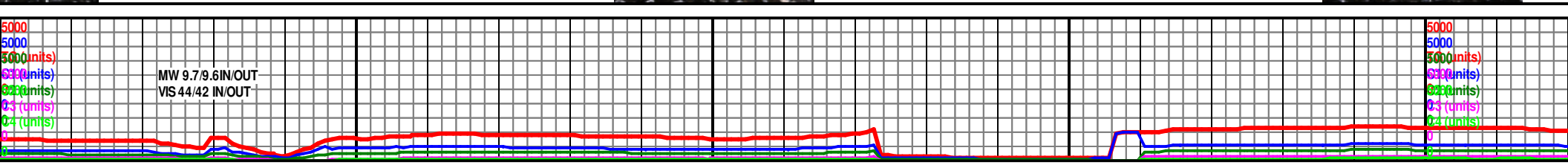
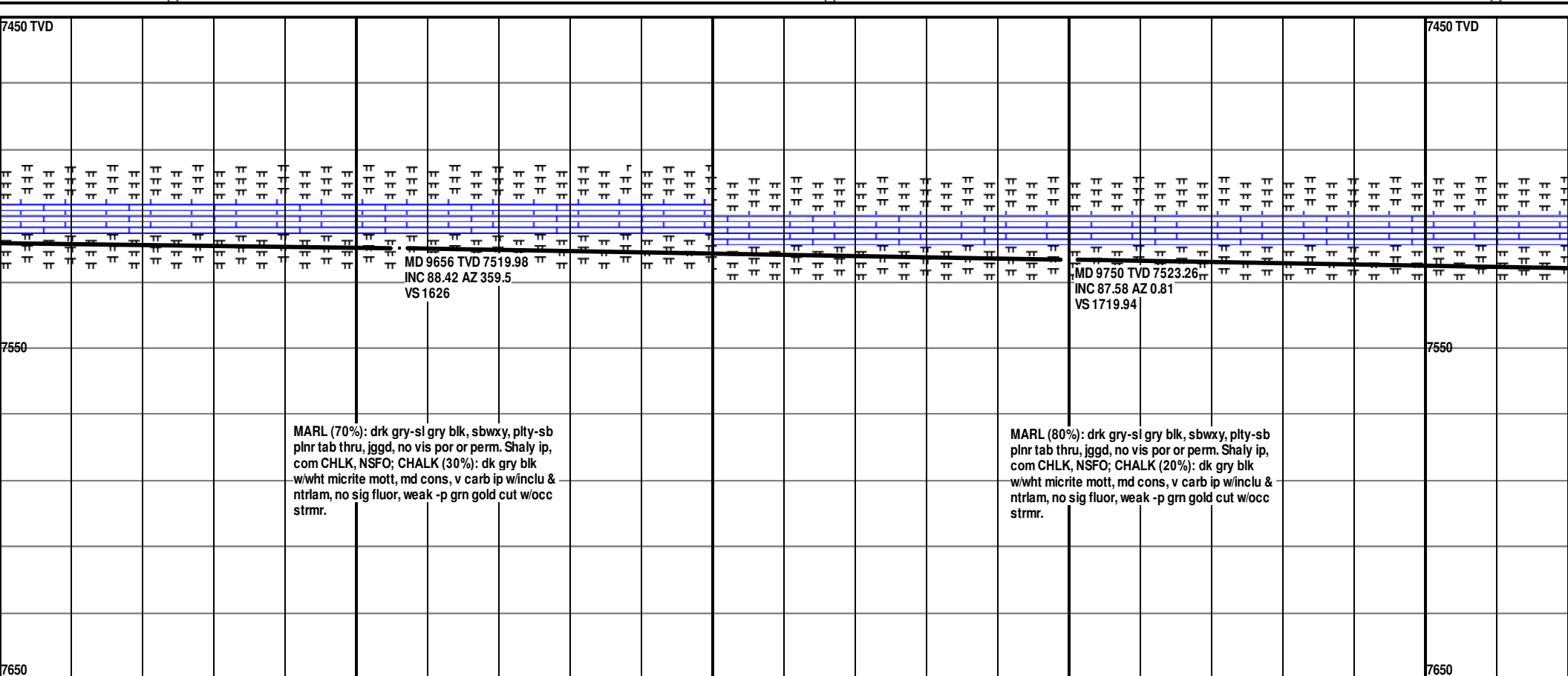
9200										9250										9300										9350									
7450 TVD																																							
MD 9184 TVD 7509.99										MD 9278 TVD 7509.77										MD 9377 TVD 7509.55										MD 9476 TVD 7509.33									
INC 90.81 AZ 358.01										INC 89.46 AZ 356.95										INC 88.71 AZ 355.89										INC 87.56 AZ 354.83									
VS 1154.39										VS 1248.29										VS 1342.19										VS 1436.09									
7550																																							
med drk gry, hghly mttld w y-rthy txt, sbbkly occ cmblly, NFO, MRLS rthy-sbwxy, frm-hd,										CHALK (80%): lt med-med drk gry, hghly mttld w ltr crm mcro spcks, chiky-rthy txt, sbbkly occ sbfiss ip, mstly frm, sl crmbly, NFO, MRLS (20%).brn-dk brn-gry, sbrthy-sbwxy, frm-hd, crypxln-micrxln, NFSOC.										CHALK (95%): lt med-med drk gry mottl w/lt micrite inclu & ntrbd, blkly, sb cs txt, abndt carb ip, MARL (5%): dk brn gry, blkly, sb fiss w/chiky ntrbd, fnly carb ip, grading nto chalk.																			
7650																																							

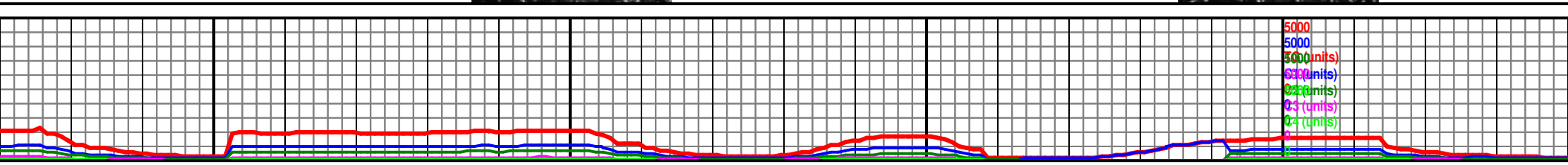
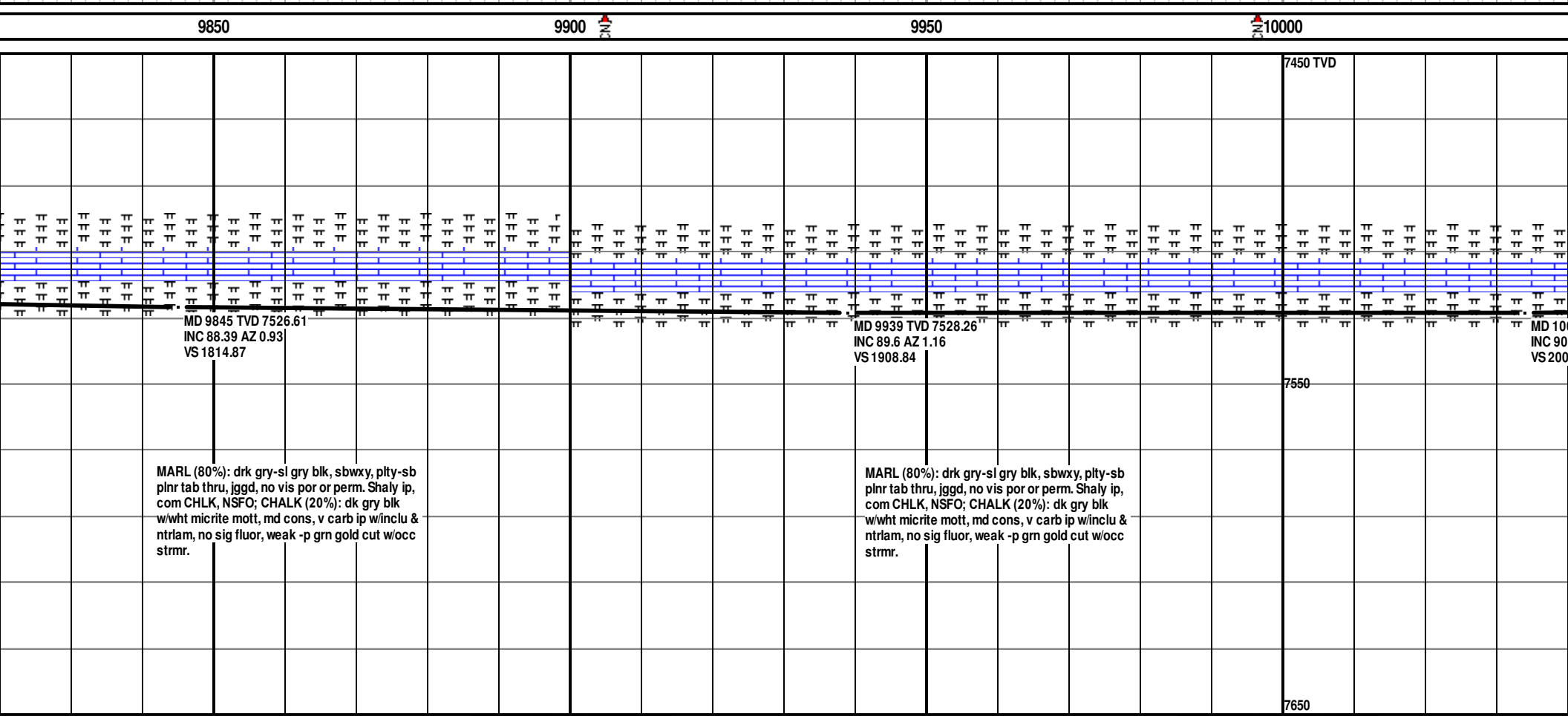
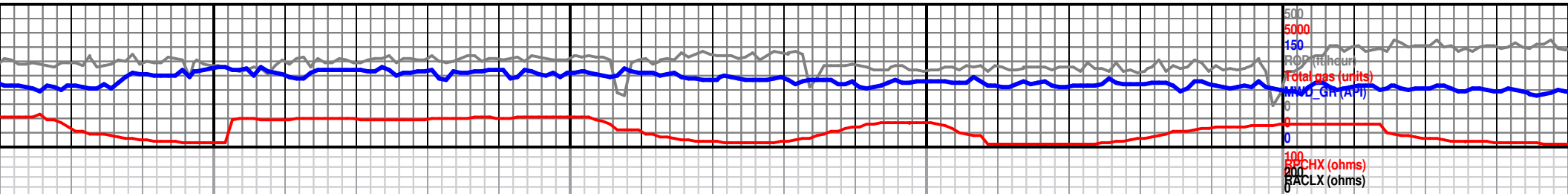


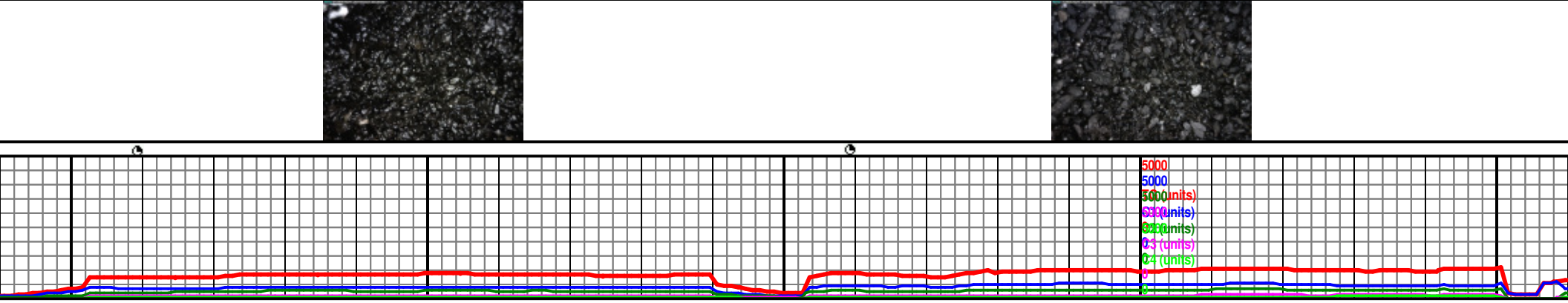


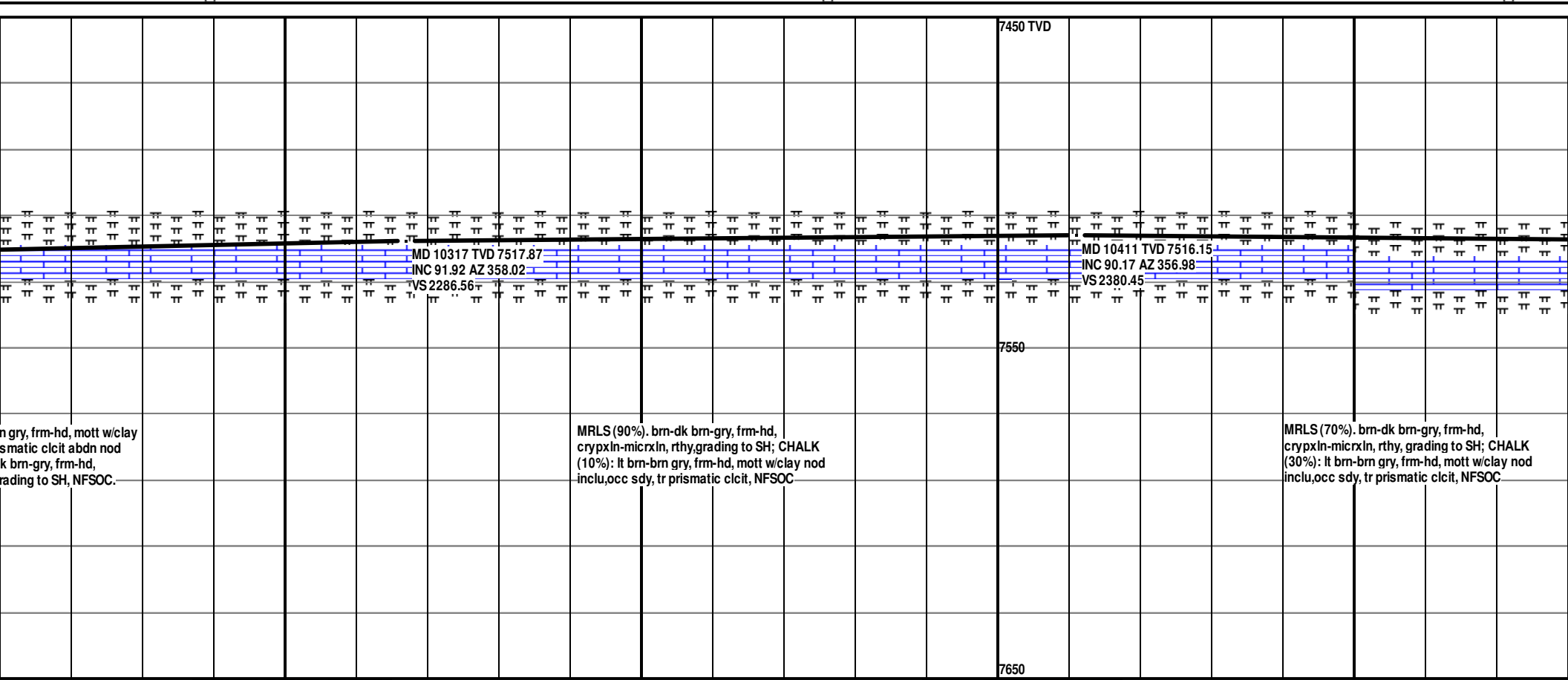
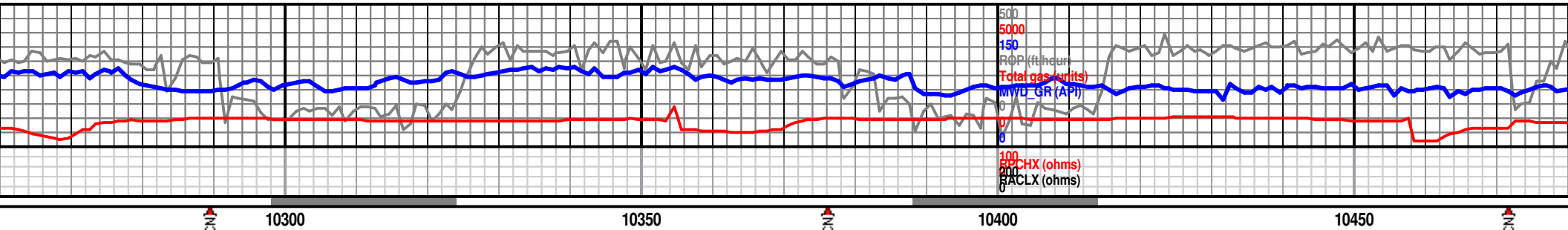
7450 TVD									
3 TVD 7511.27 2 AZ 358.52 2									
MD 9467 TVD 7514 INC 87.95 AZ 359.14 VS 1437.14									
MD 9561 TVD 7517.17 INC 88.18 AZ 358.27 VS 1531.06									
7550									
CHALK (80%): lt med-med drk gry, hghly mttld w ltr crm mcro spcks, chiky-v rthy txt, sbbiky occ sbfiss ip, MRLS (20%).brn-dk brn-gry, sbrthy-sbwxy, frm-hd, crypxln-micrxln, NFSOC.									
CHALK (60%): lt med-med drk gry, hghly mttld w ltr crm mcro spcks, chiky-rthy txt, sbbiky occ sbfiss ip, mstly frm, sl crmbly, NFO, MRLS (40%).brn-dk brn-gry, sbrthy-sbwxy, frm-hd, crypxln-micrxln, NFSOC.									
7650									







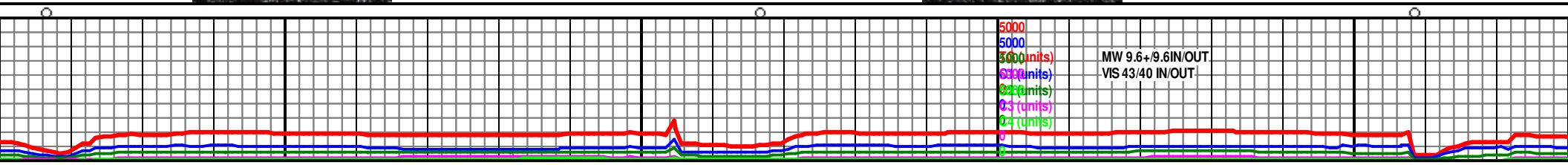


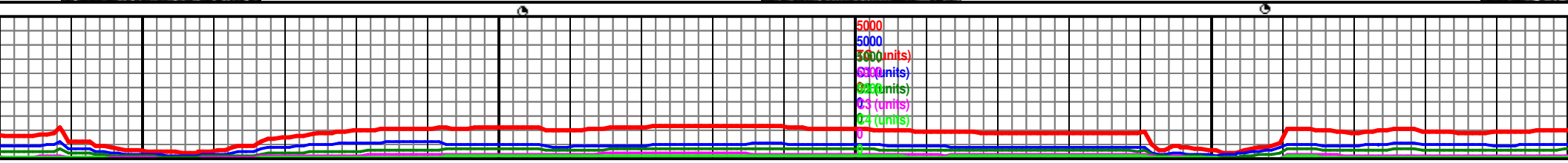
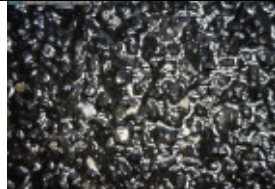
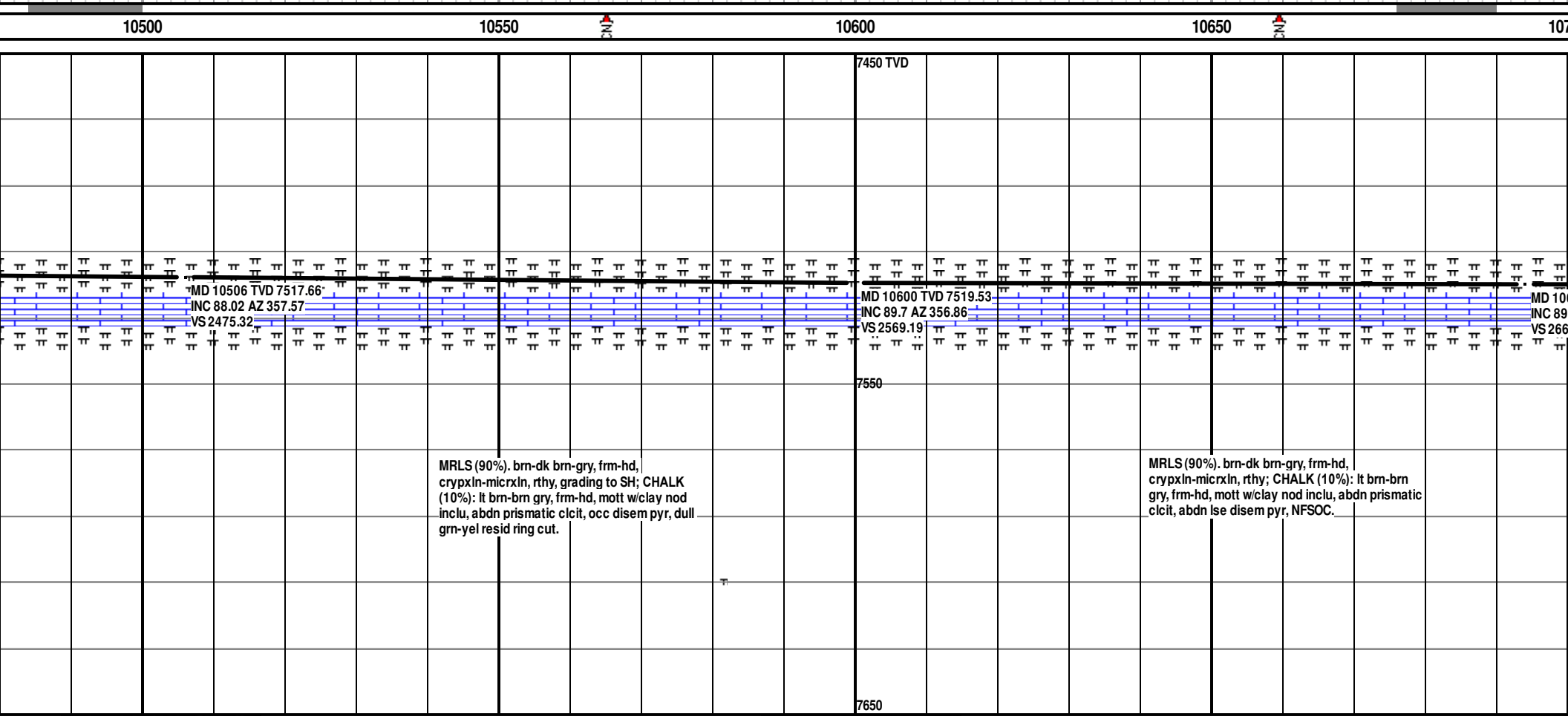
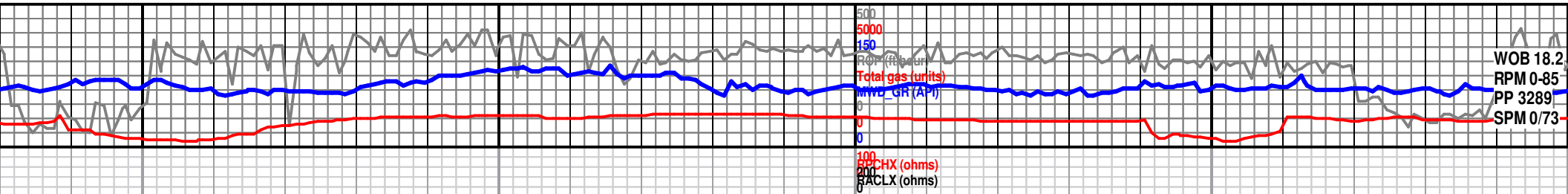


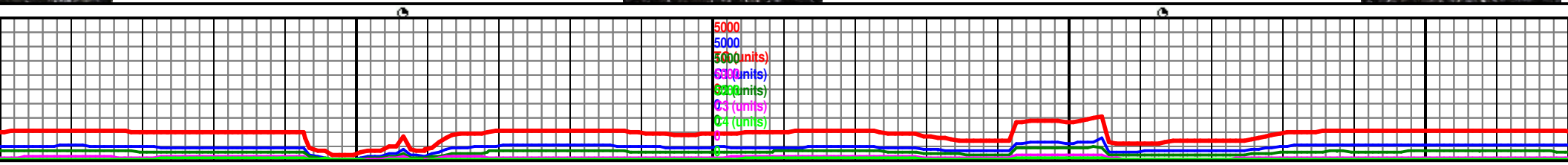
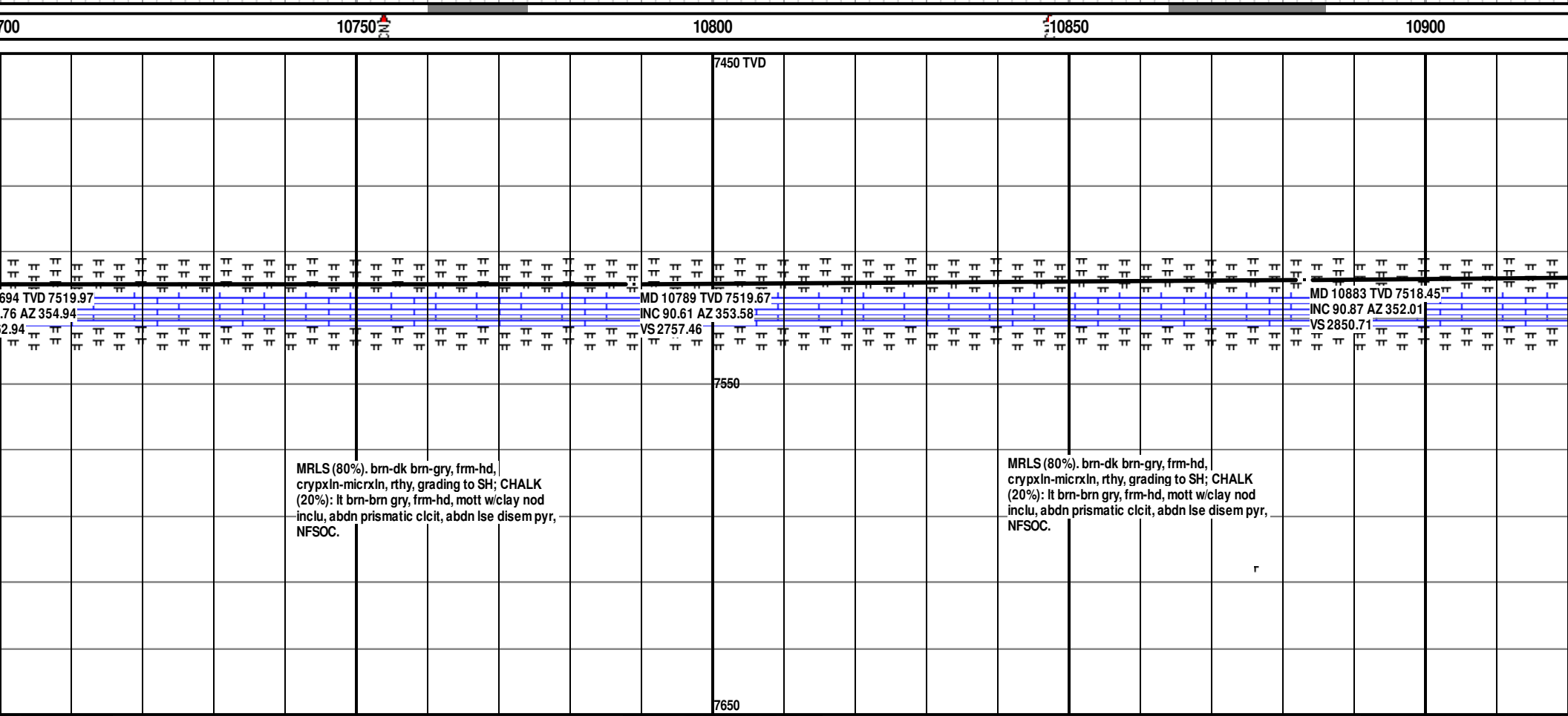
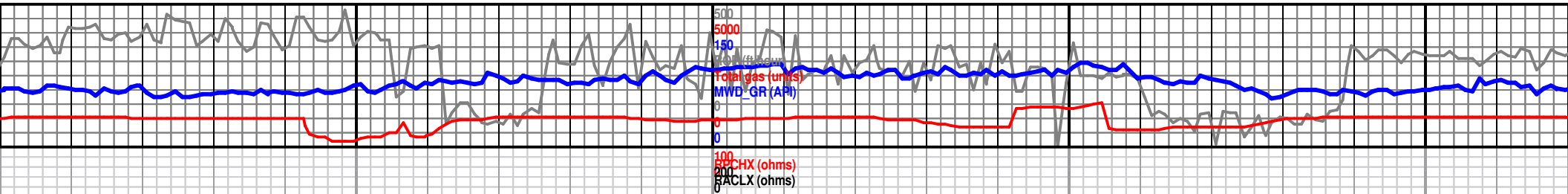
n gry, frm-hd, mott w/clay
 smatic clcit abdn nod
 k brn-gry, frm-hd,
 grading to SH, NFSOC.

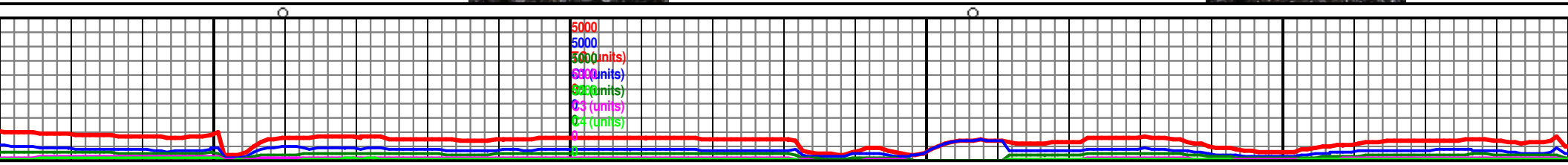
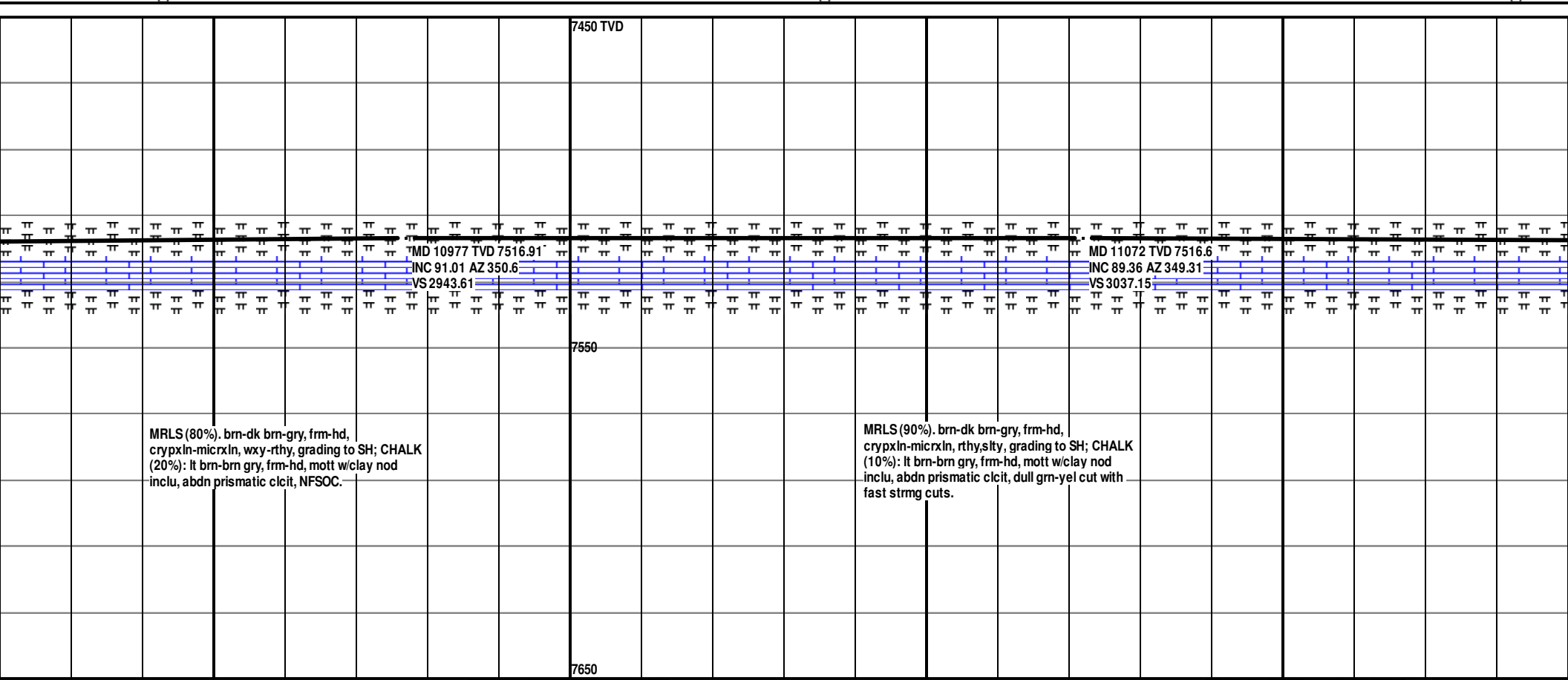
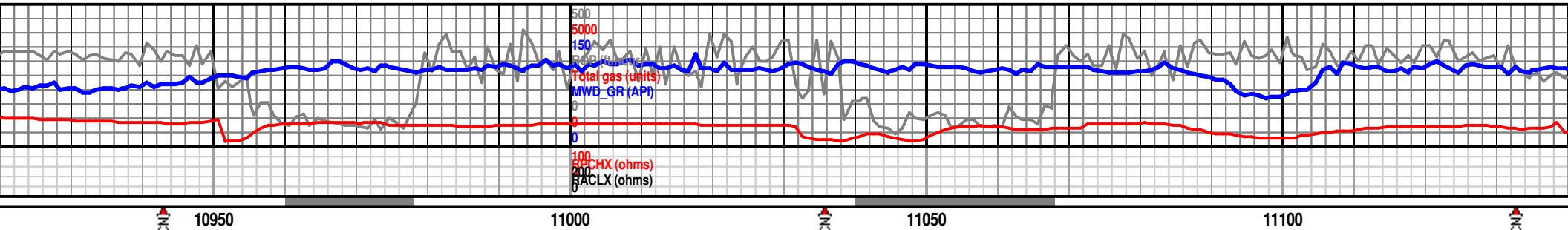
MRLS (90%). brn-dk brn-gry, frm-hd,
 crypxln-micrxln, rthy, grading to SH; CHALK
 (10%): lt brn-brn gry, frm-hd, mott w/clay nod
 inclu, occ sdy, tr prismatic clcit, NFSOC

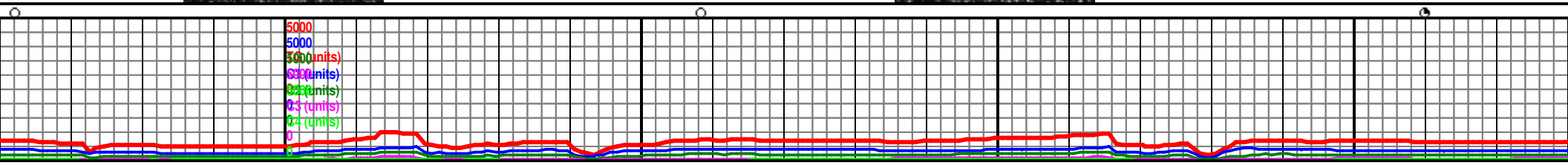
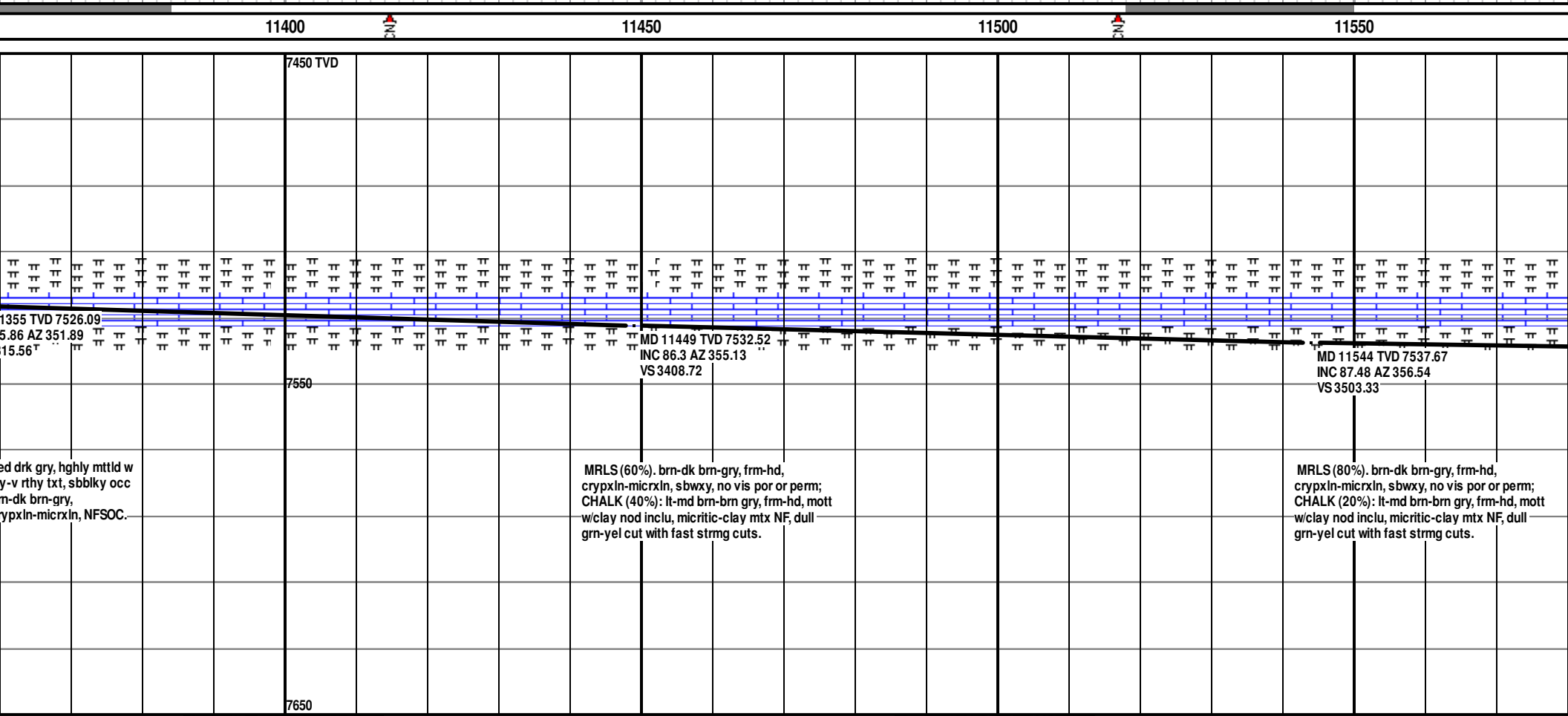
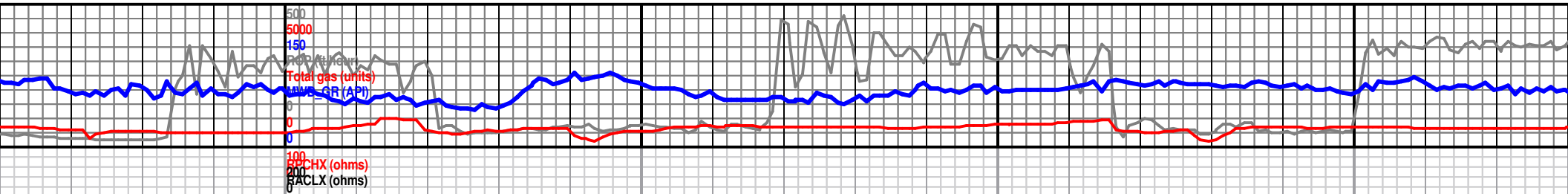
MRLS (70%). brn-dk brn-gry, frm-hd,
 crypxln-micrxln, rthy, grading to SH; CHALK
 (30%): lt brn-brn gry, frm-hd, mott w/clay nod
 inclu, occ sdy, tr prismatic clcit, NFSOC

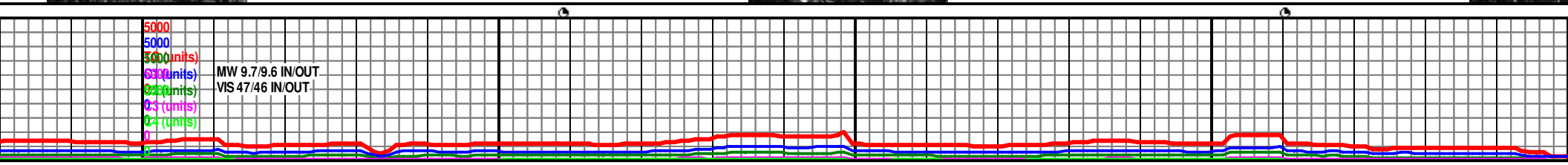
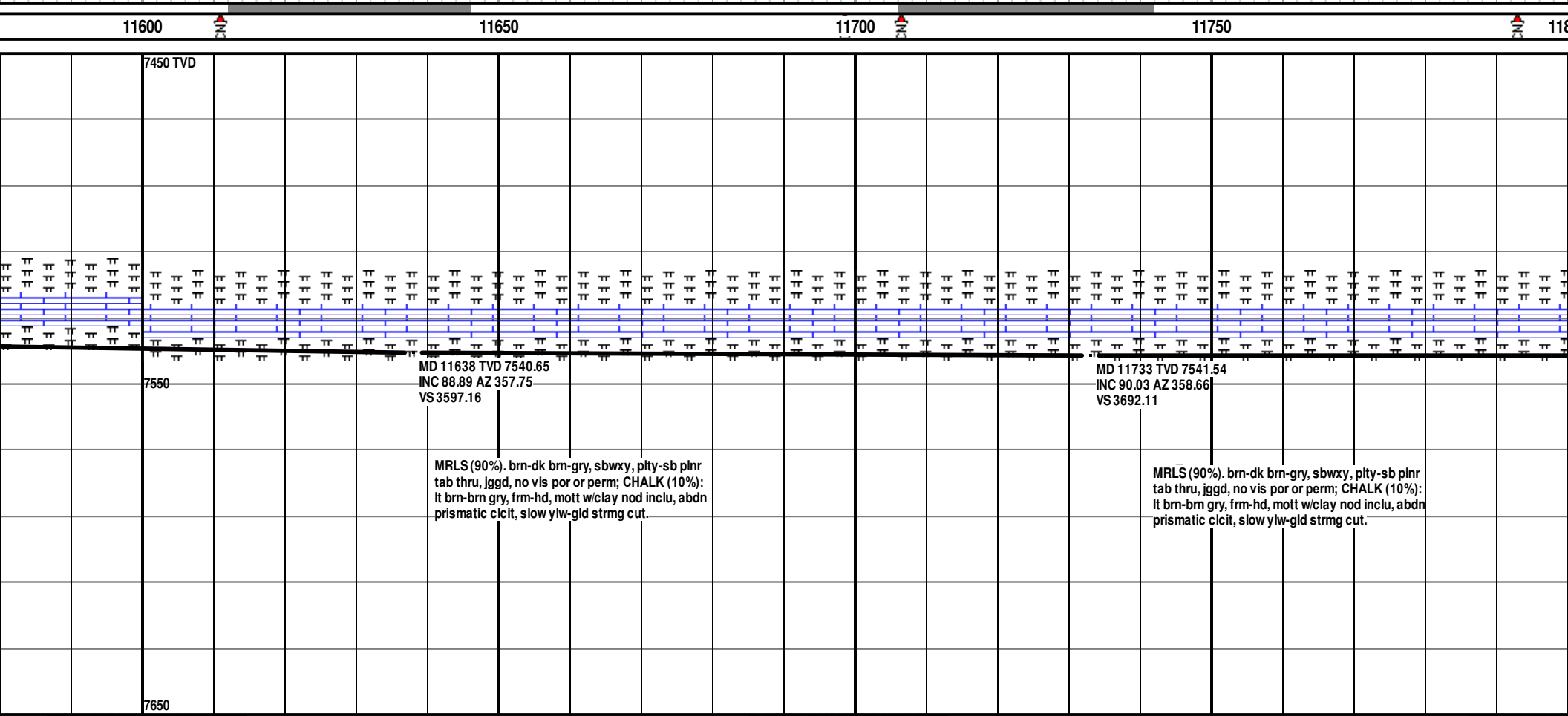
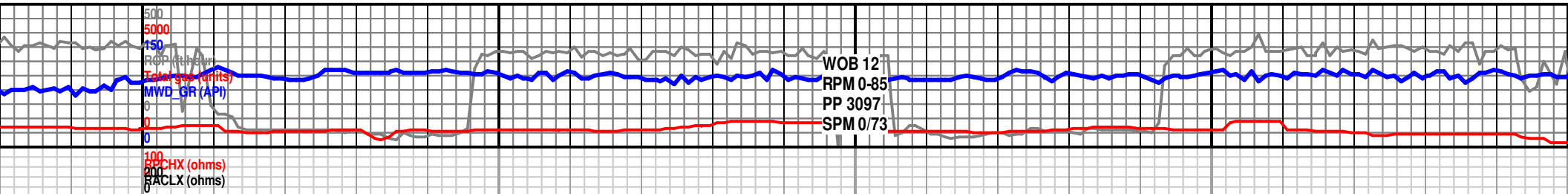


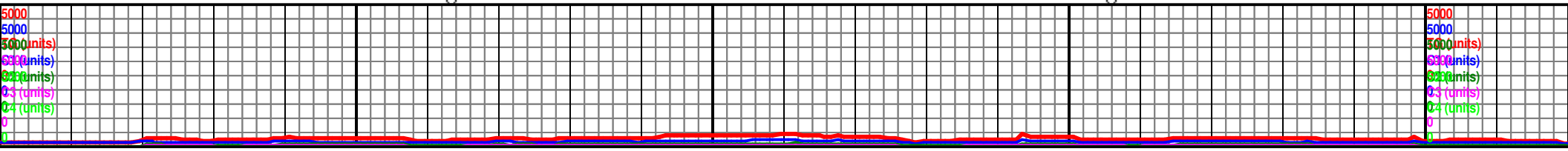
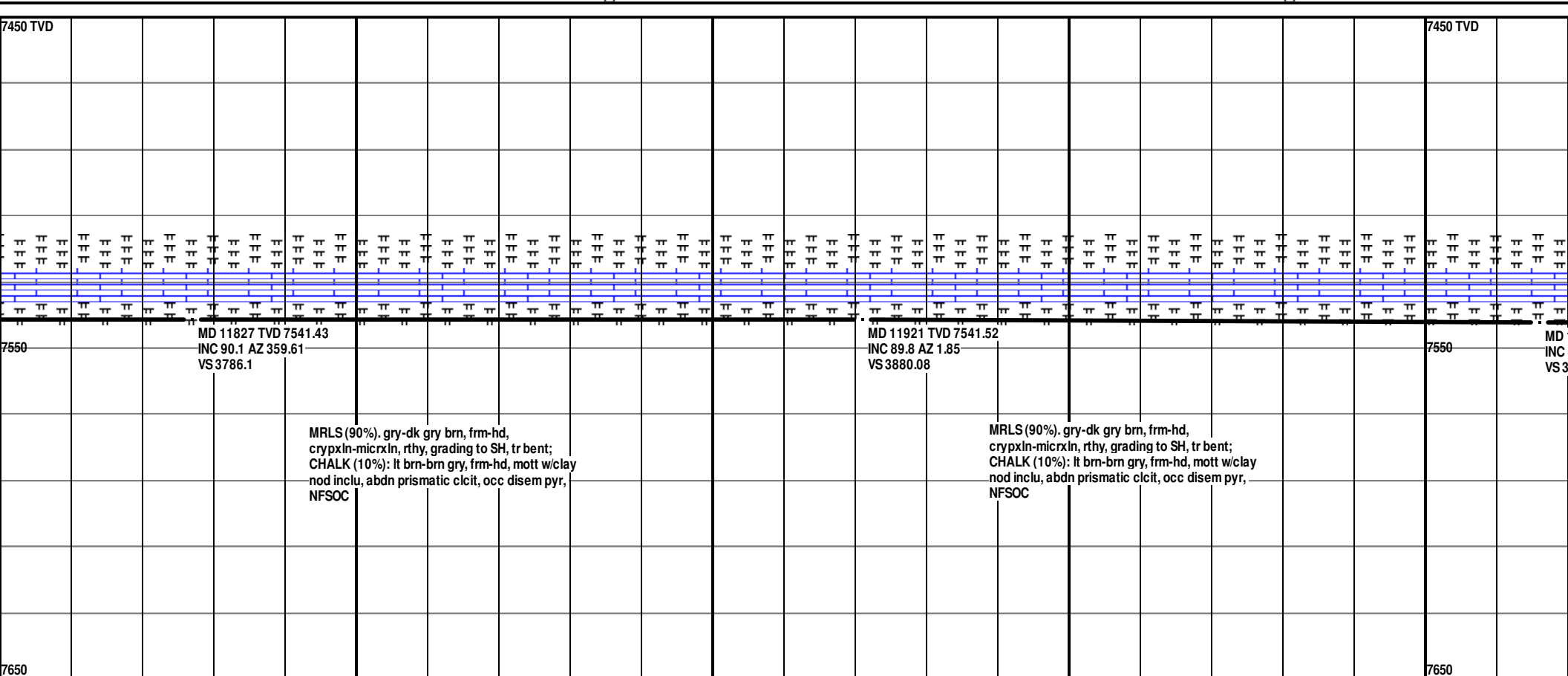


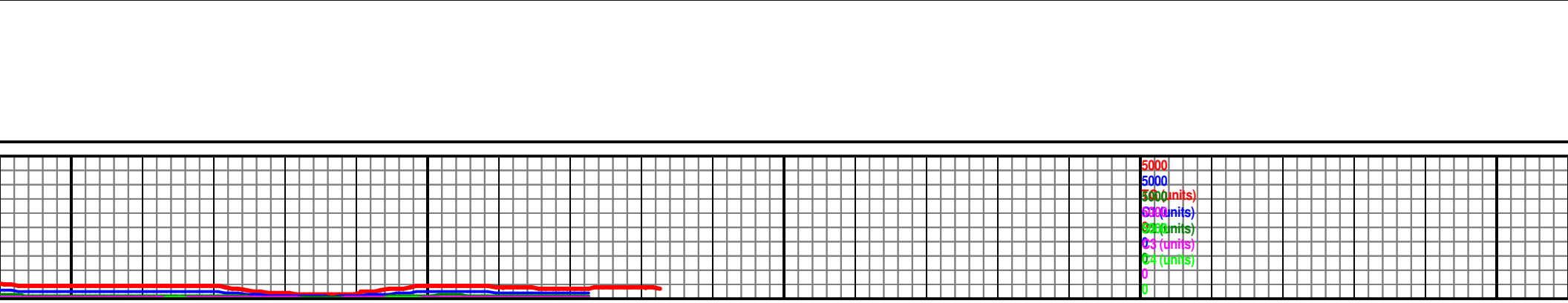
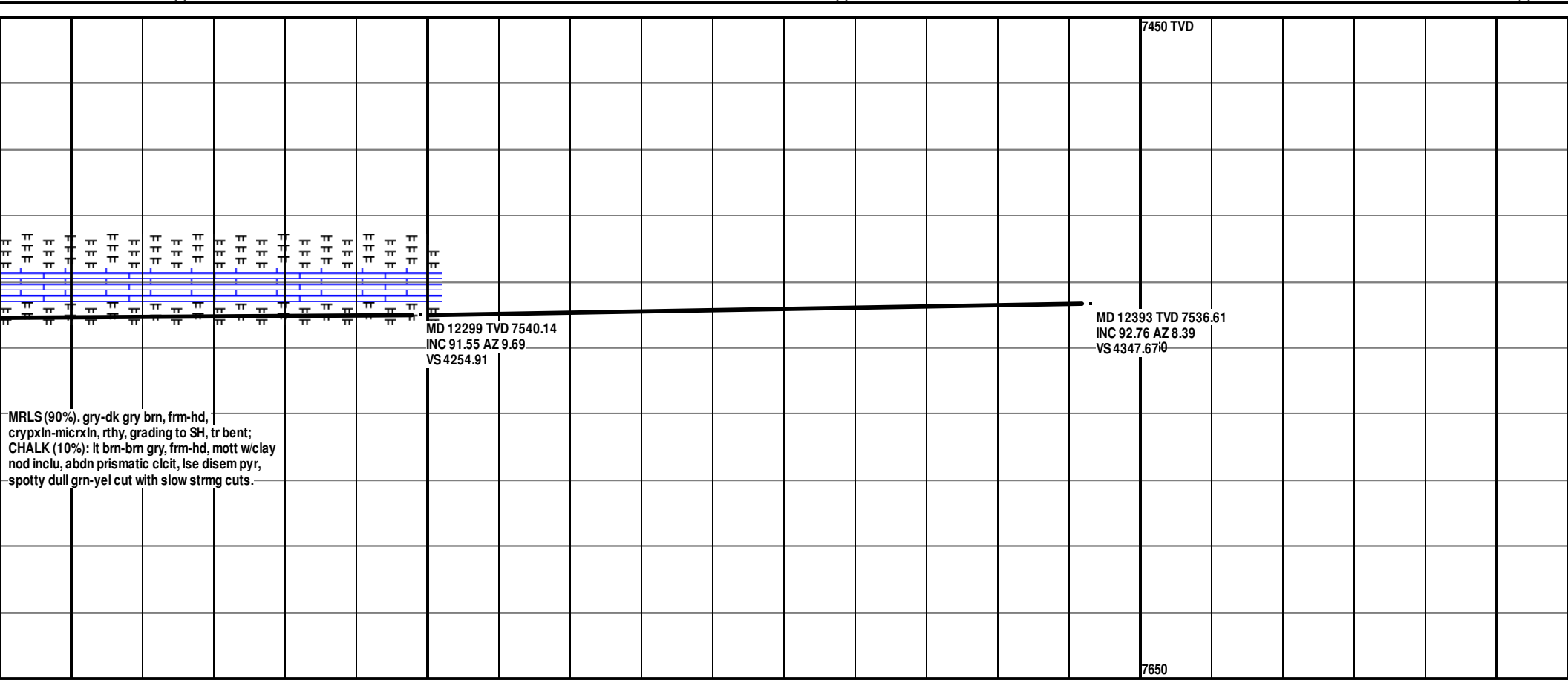
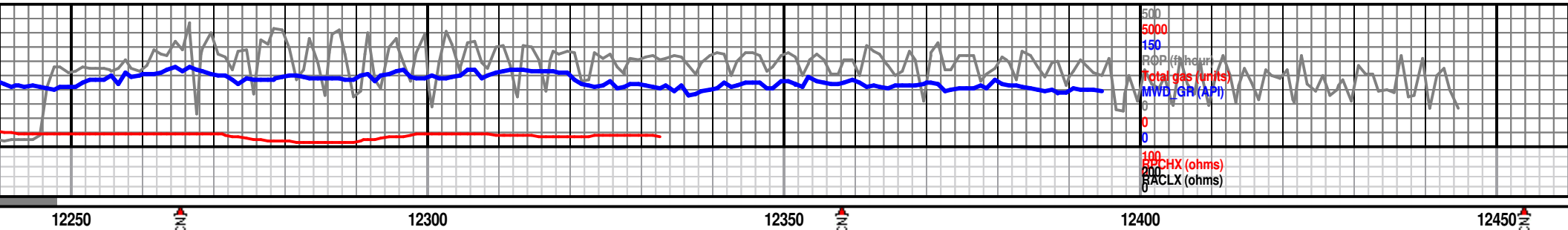


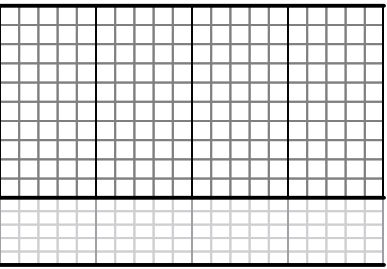












125

