

NO WORRIES PC G14-64-1HN

MD
2":100'

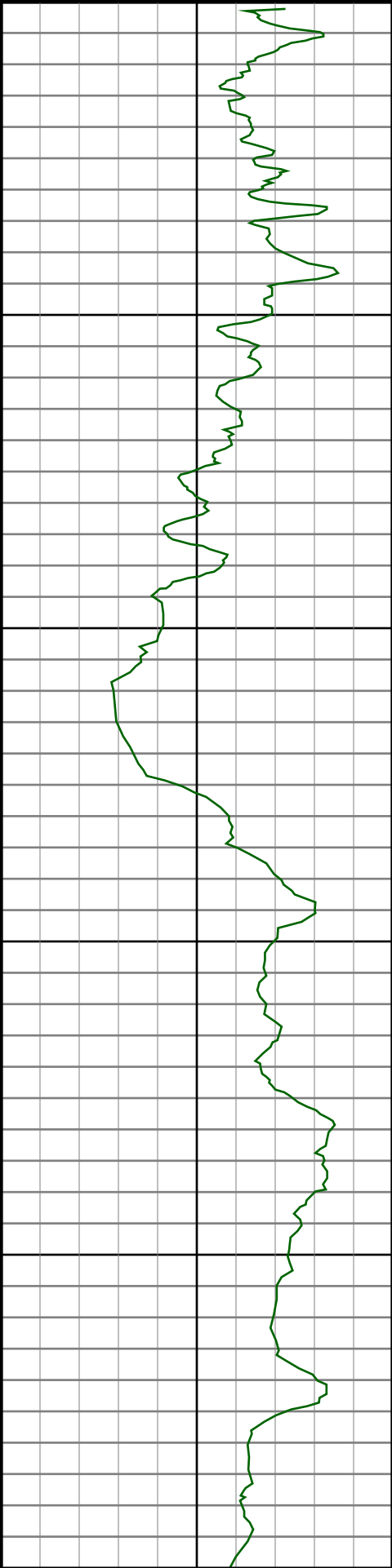
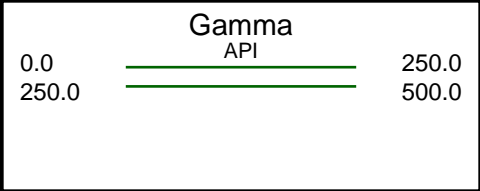
Company: Noble Energy Inc
Well Name: NO WORRIES PC G14-64-1HN
UWI or LSD: 05-123-36329
Rig Id: H&P 273
State: Colorado
County/Parish: Weld
Country: USA
Survey Company: Ensign Directional
Job number: 139437
Dir. Driller Days Breven Williams
Dir. Driller Nights Bret Johnson
MWD/LWD Days Tyler Teague
MWD/LWD Nights Jamey House

Log measurements:
Depth measured from:
Maximum temperature: 240.8

Depth **Date**
Start: 655 ft 01/20/2014
End: 11209 ft 01/26/2014

Casing	Depth	Size	Mud Type:	Elevations
Surface:	655	9.625	Density:	KB: 4719
Intermediate:	7242	7	Viscosity:	GL: 4695
			Rm:	DF: 4719
			Rmf:	
			Rmc:	

Run	Bit Size	Offsets	Gamma	Survey	Start	Depths	End	Start	Dates	End
1	8.75	-1.00	-1.00		0	655		01/20/2014		01/20/2014
2	8.75	61.99	56.99		655	6070		01/21/2014		01/21/2014
3	8.75	61.74	56.74		6070	7250		01/22/2014		01/22/2014
4	6.125	72.40	67.40		7250	11056		01/23/2014		01/25/2014
5	6.125	72.04	67.04		11056	11209		01/26/2014		01/26/2014
6										
7										
8										
9										
10										



MD

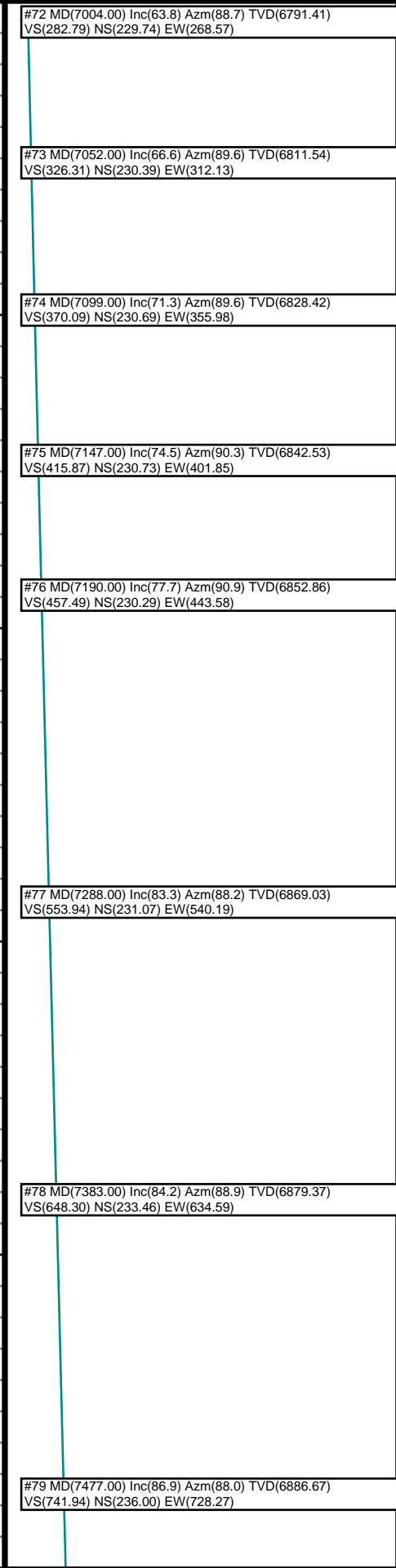
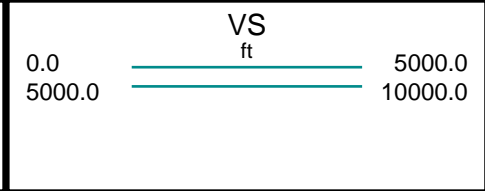
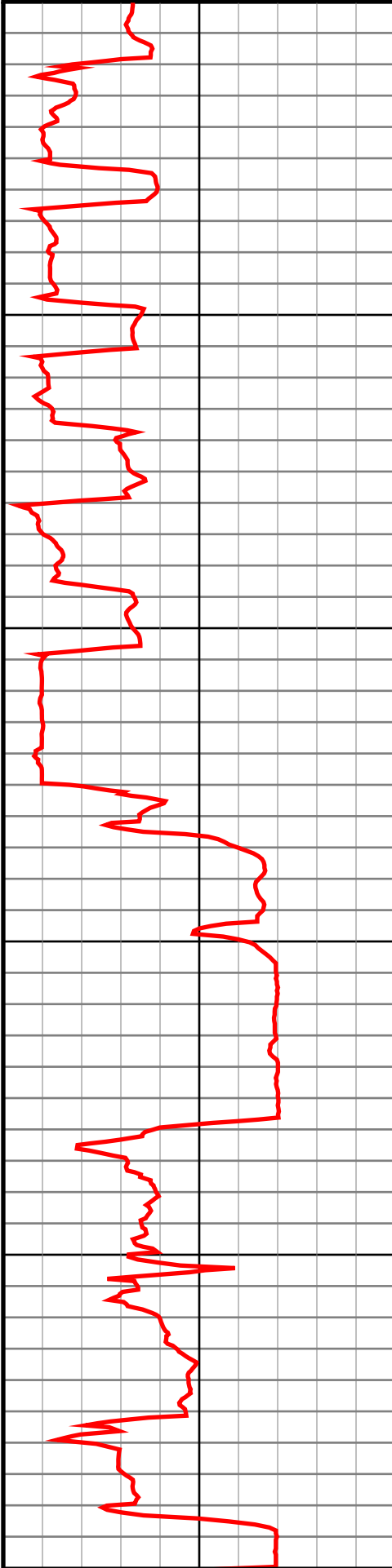
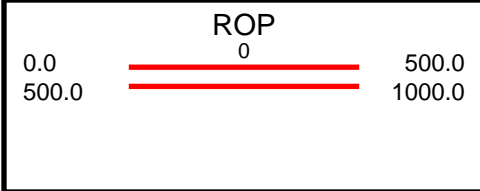
7100

7200

7300

7400

7500



#72 MD(7004.00) Inc(63.8) Azm(88.7) TVD(6791.41)
VS(282.79) NS(229.74) EW(268.57)

#73 MD(7052.00) Inc(66.6) Azm(89.6) TVD(6811.54)
VS(326.31) NS(230.39) EW(312.13)

#74 MD(7099.00) Inc(71.3) Azm(89.6) TVD(6828.42)
VS(370.09) NS(230.69) EW(355.98)

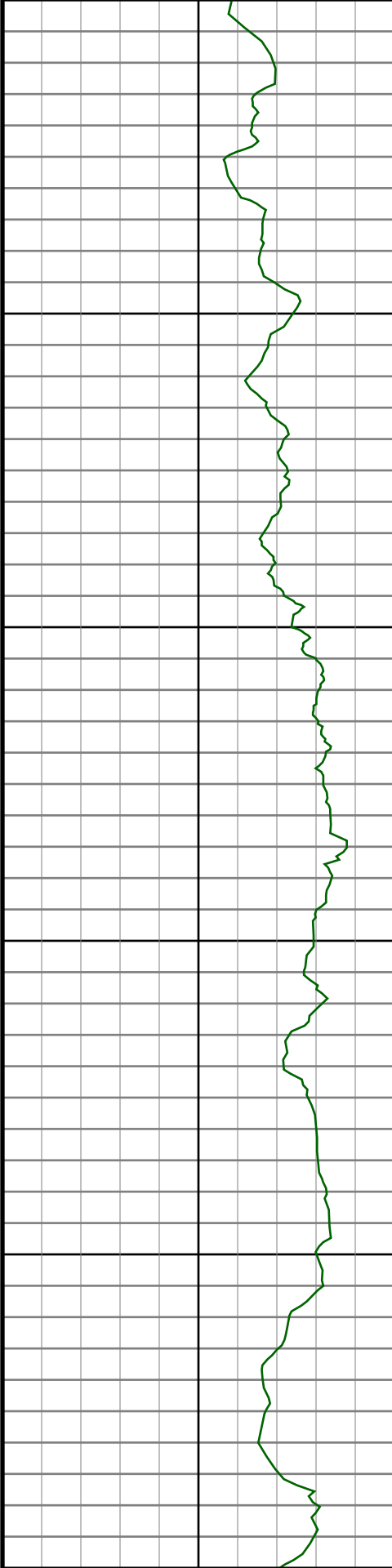
#75 MD(7147.00) Inc(74.5) Azm(90.3) TVD(6842.53)
VS(415.87) NS(230.73) EW(401.85)

#76 MD(7190.00) Inc(77.7) Azm(90.9) TVD(6852.86)
VS(457.49) NS(230.29) EW(443.58)

#77 MD(7288.00) Inc(83.3) Azm(88.2) TVD(6869.03)
VS(553.94) NS(231.07) EW(540.19)

#78 MD(7383.00) Inc(84.2) Azm(88.9) TVD(6879.37)
VS(648.30) NS(233.46) EW(634.59)

#79 MD(7477.00) Inc(86.9) Azm(88.0) TVD(6886.67)
VS(741.94) NS(236.00) EW(728.27)



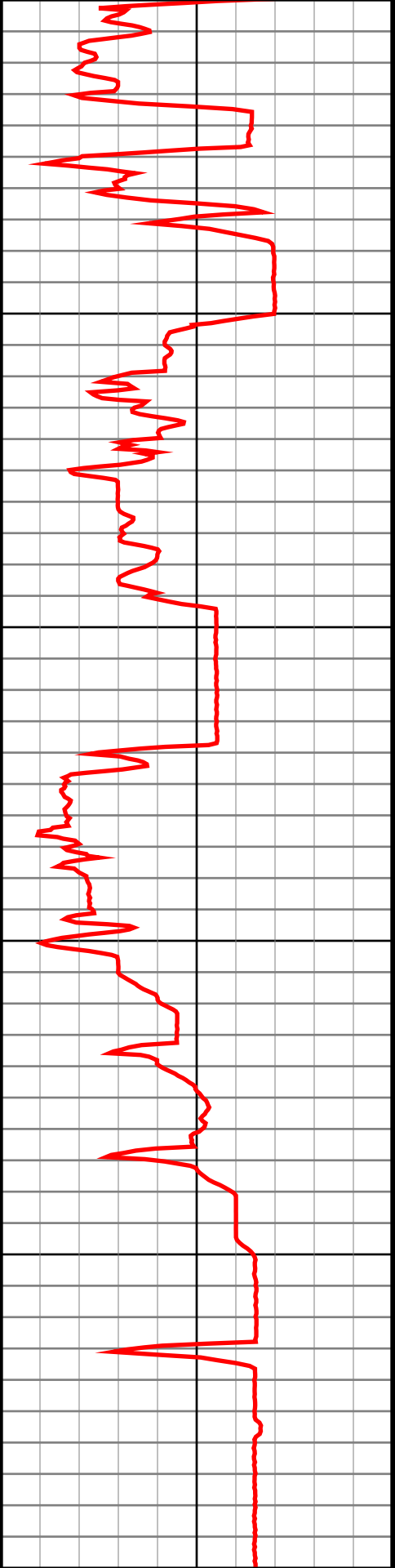
7600

7700

7800

7900

8000



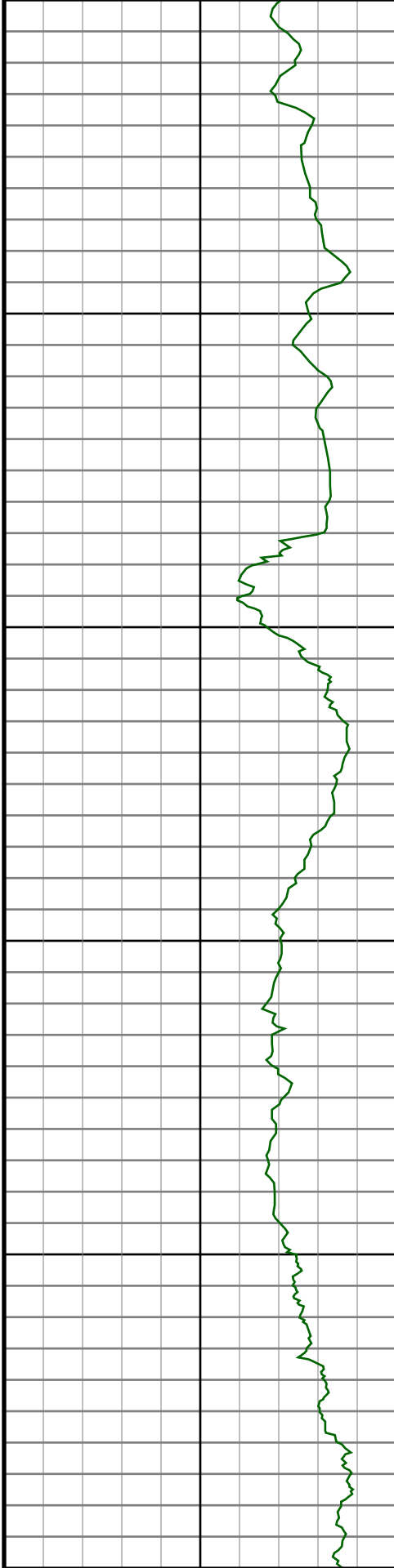
#80 MD(7572.00) Inc(87.9) Azm(88.2) TVD(6890.97)
VS(836.80) NS(239.14) EW(823.11)

#81 MD(7667.00) Inc(89.0) Azm(88.6) TVD(6893.54)
VS(931.70) NS(241.79) EW(918.04)

#82 MD(7762.00) Inc(90.9) Azm(89.5) TVD(6893.63)
VS(1026.58) NS(243.37) EW(1013.02)

#83 MD(7857.00) Inc(91.2) Azm(89.1) TVD(6891.89)
VS(1121.44) NS(244.53) EW(1108.00)

#84 MD(7951.00) Inc(91.4) Azm(89.8) TVD(6889.75)
VS(1215.27) NS(245.43) EW(1201.97)



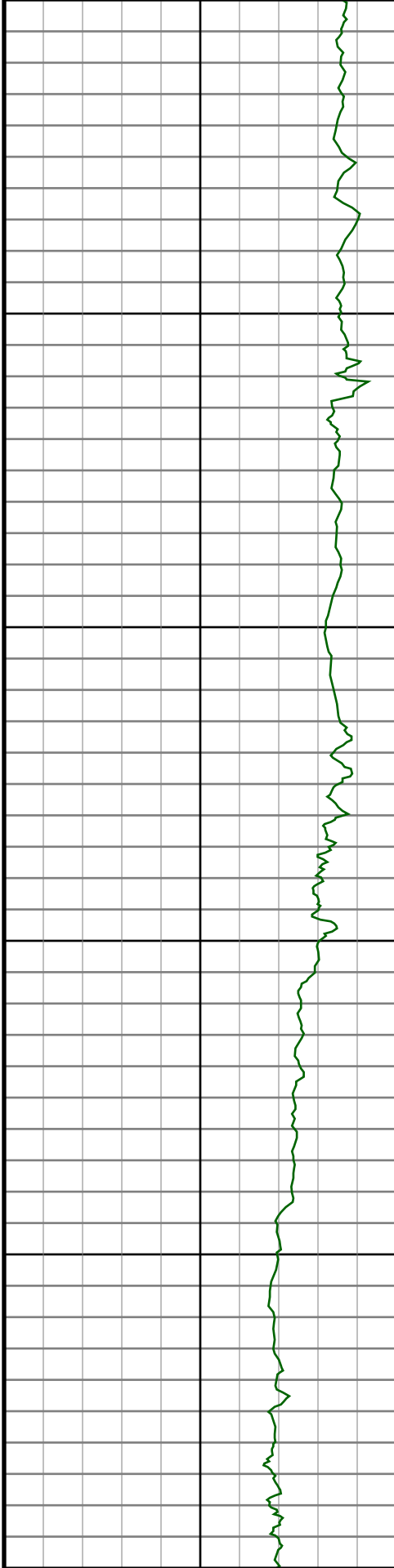
#85 MD(8046.00) Inc(91.5) Azm(90.0) TVD(6887.35)
VS(1310.06) NS(245.60) EW(1296.94)

#86 MD(8141.00) Inc(91.4) Azm(90.3) TVD(6884.95)
VS(1404.81) NS(245.35) EW(1391.91)

#87 MD(8236.00) Inc(91.4) Azm(90.5) TVD(6882.62)
VS(1499.54) NS(244.68) EW(1486.88)

#88 MD(8331.00) Inc(91.0) Azm(90.0) TVD(6880.64)
VS(1594.30) NS(244.27) EW(1581.86)

#89 MD(8426.00) Inc(90.7) Azm(90.0) TVD(6879.23)
VS(1689.09) NS(244.27) EW(1676.84)



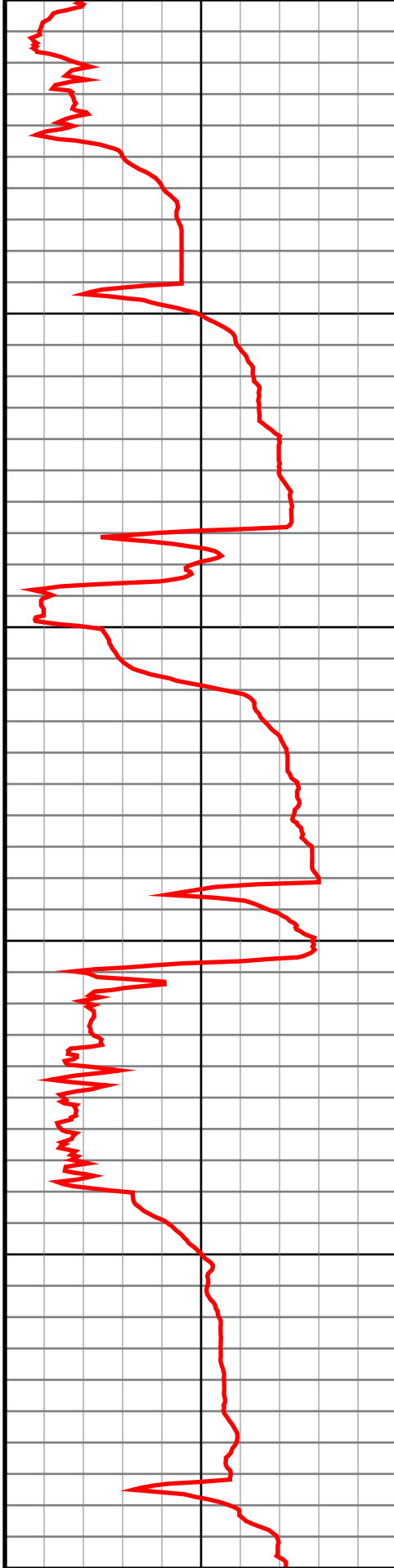
8600

8700

8800

8900

9000



#90 MD(8521.00) Inc(91.5) Azm(89.5) TVD(6877.40)
VS(1783.90) NS(244.68) EW(1771.82)

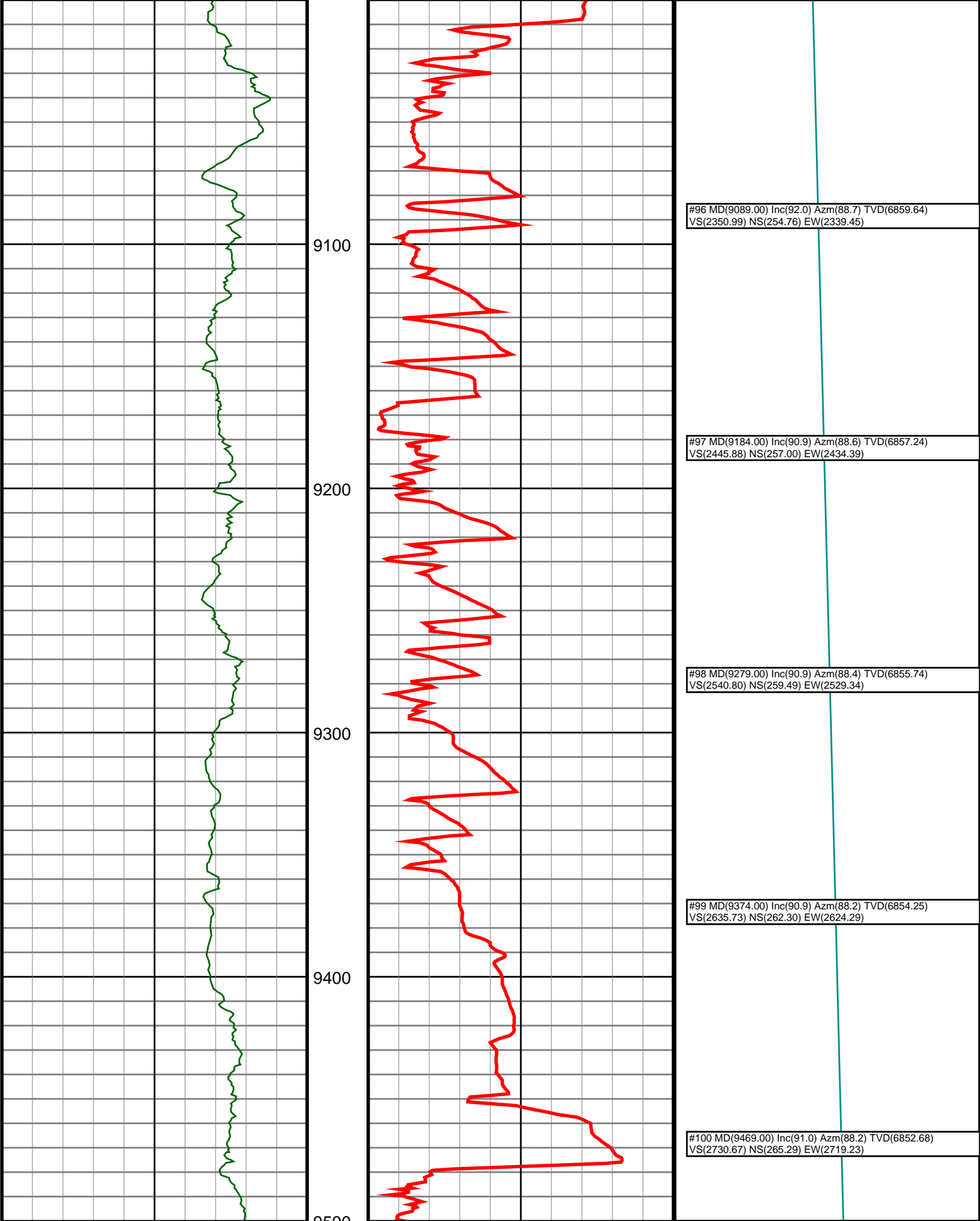
#91 MD(8615.00) Inc(91.5) Azm(89.5) TVD(6874.94)
VS(1877.72) NS(245.50) EW(1865.79)

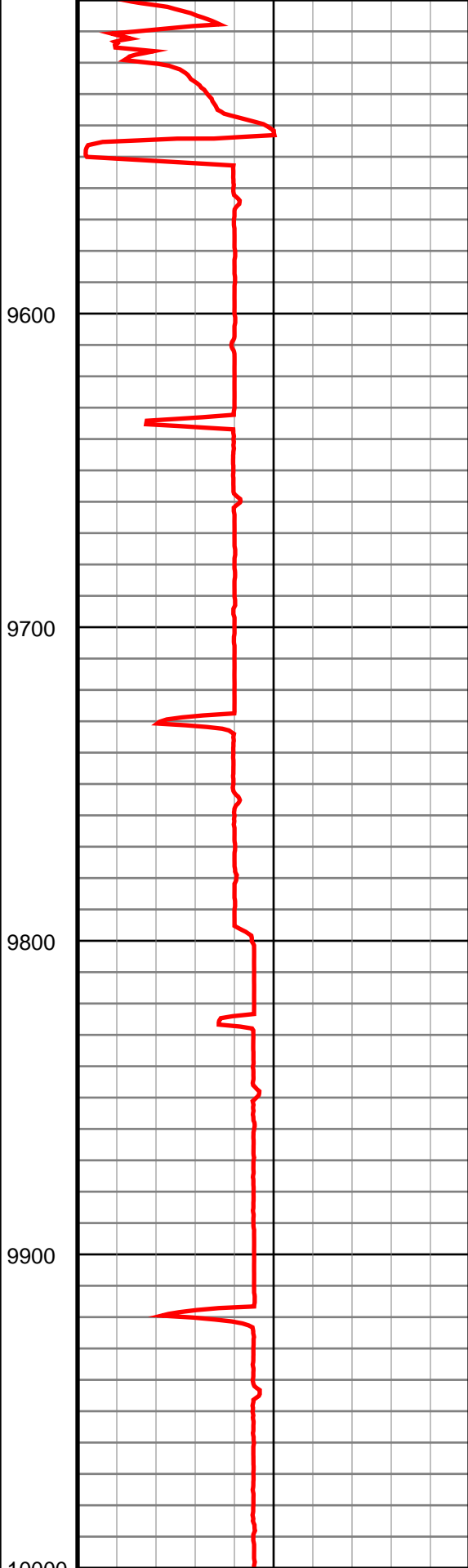
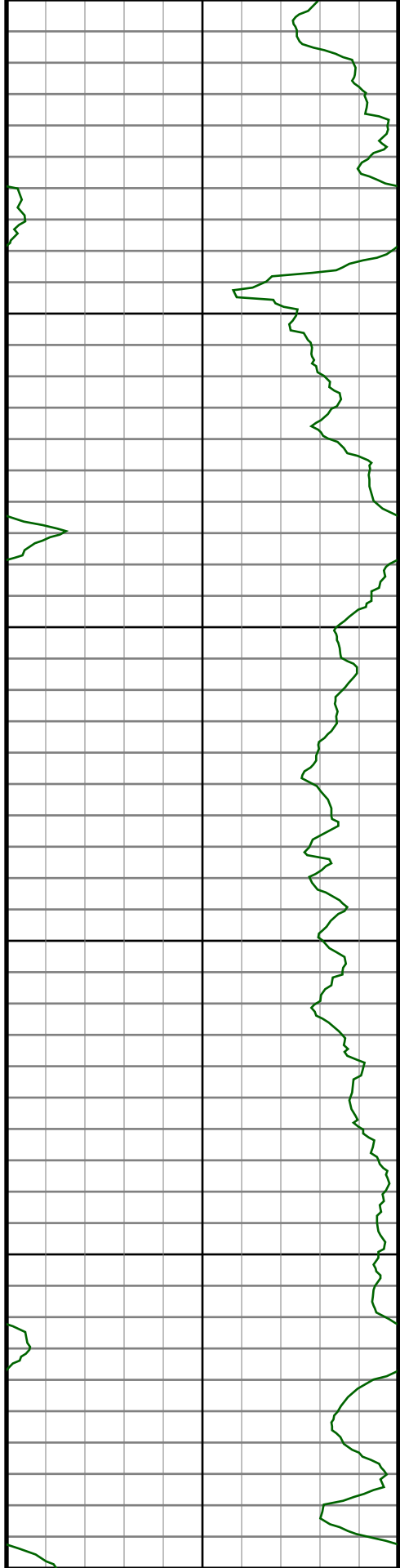
#92 MD(8710.00) Inc(91.9) Azm(89.1) TVD(6872.12)
VS(1972.55) NS(246.66) EW(1960.74)

#93 MD(8805.00) Inc(91.9) Azm(88.7) TVD(6868.97)
VS(2067.40) NS(248.49) EW(2055.67)

#94 MD(8900.00) Inc(91.9) Azm(88.6) TVD(6865.82)
VS(2162.27) NS(250.72) EW(2150.59)

#95 MD(8995.00) Inc(91.8) Azm(88.9) TVD(6862.76)
VS(2257.13) NS(252.80) EW(2245.52)





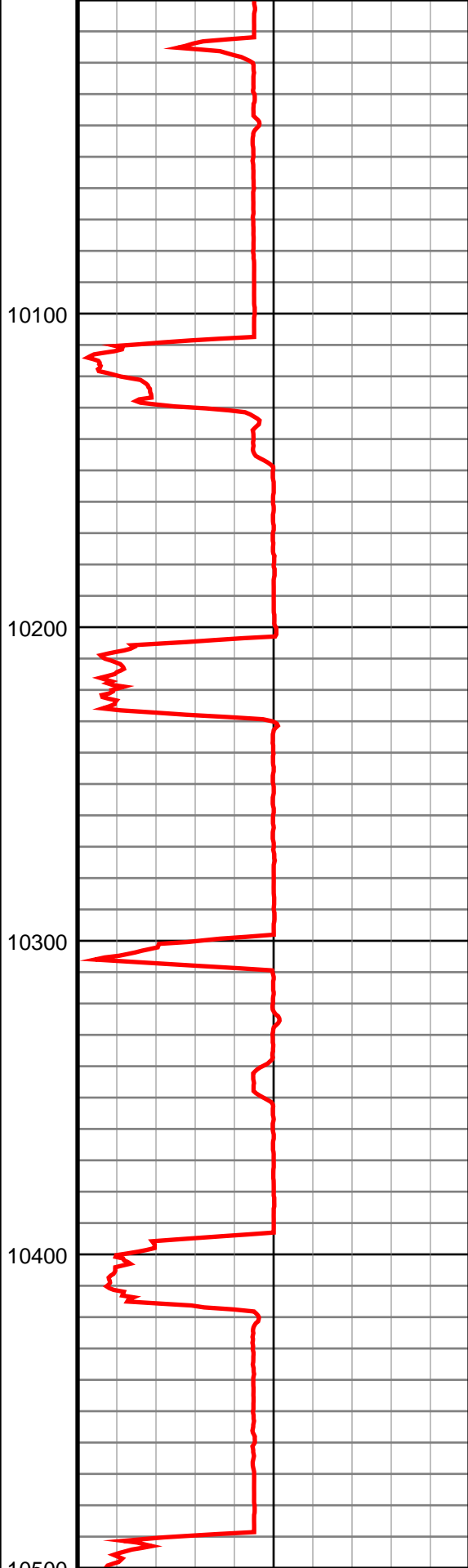
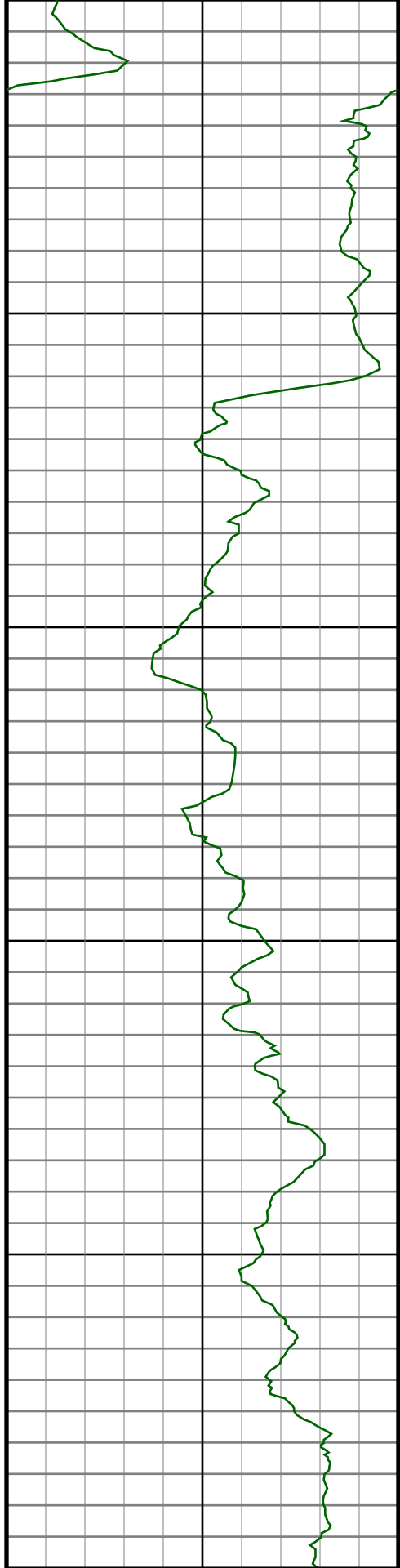
#101 MD(9564.00) Inc(90.0) Azm(88.4) TVD(6851.85)
VS(2825.60) NS(268.11) EW(2814.18)

#102 MD(9659.00) Inc(89.8) Azm(88.4) TVD(6852.01)
VS(2920.54) NS(270.76) EW(2909.15)

#103 MD(9754.00) Inc(90.0) Azm(88.2) TVD(6852.18)
VS(3015.48) NS(273.58) EW(3004.10)

#104 MD(9848.00) Inc(90.1) Azm(88.2) TVD(6852.10)
VS(3109.43) NS(276.53) EW(3098.06)

#105 MD(9943.00) Inc(90.2) Azm(88.2) TVD(6851.85)
VS(3204.38) NS(279.51) EW(3193.01)



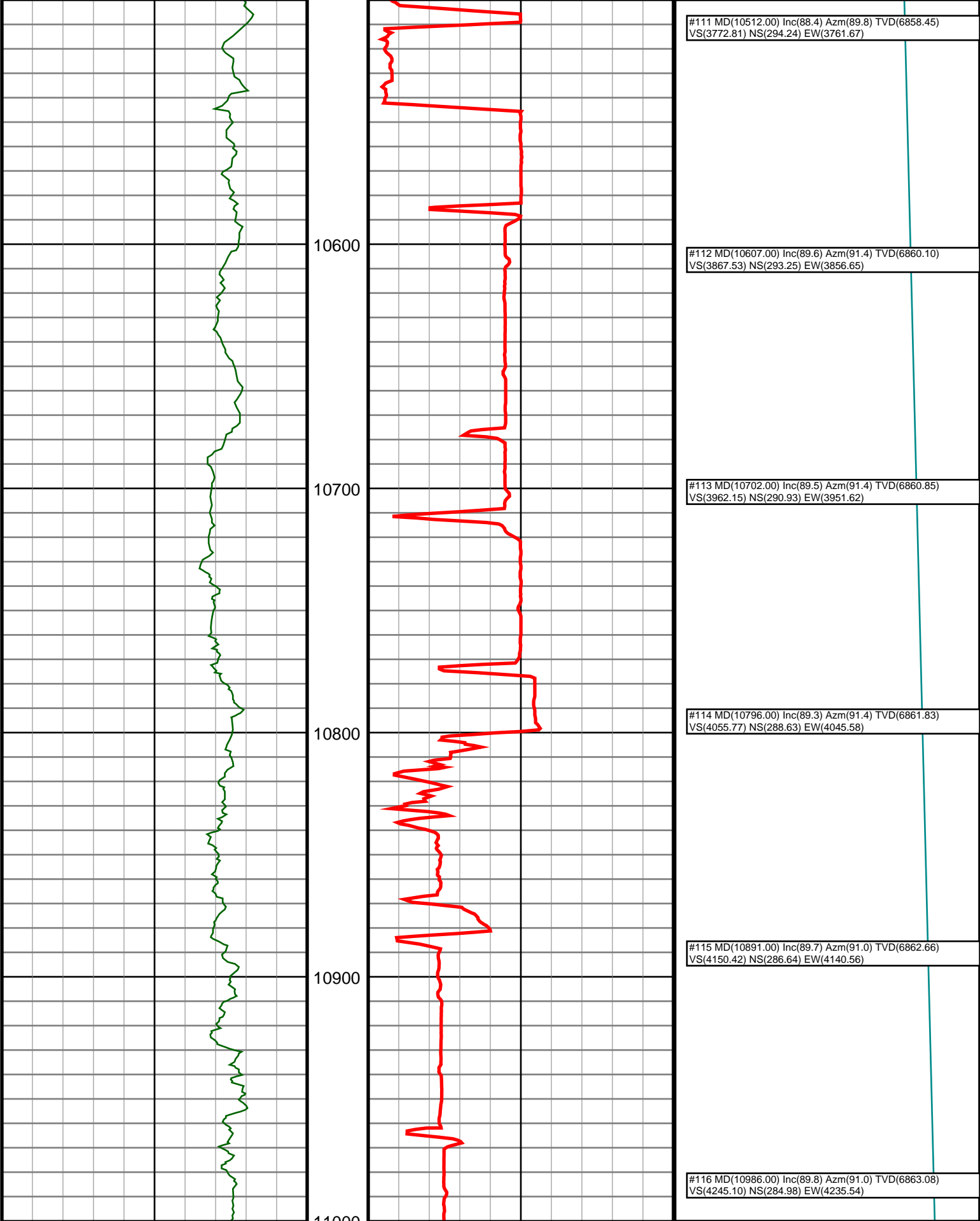
#106 MD(10038.00) Inc(90.5) Azm(88.0) TVD(6851.27)
VS(3299.33) NS(282.66) EW(3287.96)

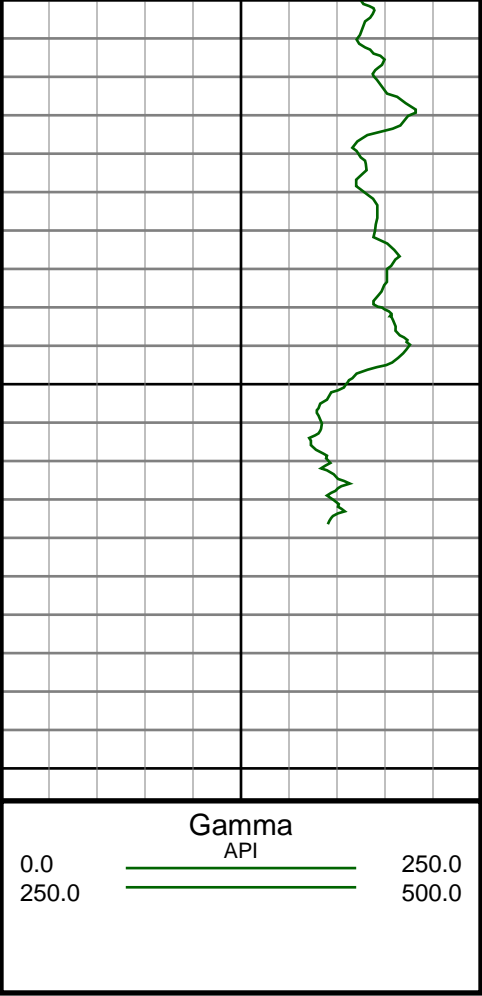
#107 MD(10133.00) Inc(90.1) Azm(88.2) TVD(6850.77)
VS(3394.28) NS(285.81) EW(3382.90)

#108 MD(10228.00) Inc(89.9) Azm(88.6) TVD(6850.77)
VS(3489.22) NS(288.47) EW(3477.87)

#109 MD(10323.00) Inc(88.9) Azm(88.6) TVD(6851.77)
VS(3584.14) NS(290.79) EW(3572.83)

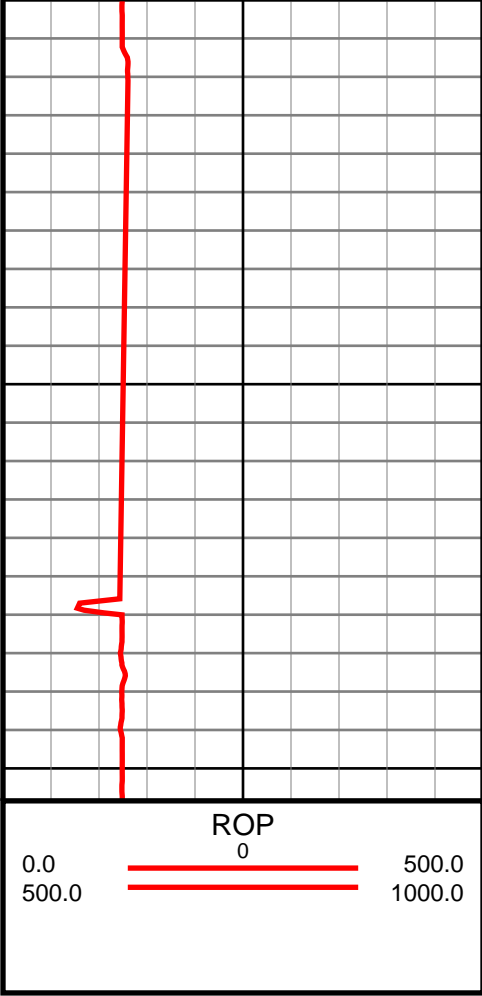
#110 MD(10417.00) Inc(87.3) Azm(88.7) TVD(6854.88)
VS(3678.01) NS(293.00) EW(3666.75)





11100

11200



#117 MD(11081.00) Inc(89.8) Azm(90.7) TVD(6863.41)
VS(4339.80) NS(283.57) EW(4330.53)

#118 MD(11139.00) Inc(90.0) Azm(90.3) TVD(6863.51)
VS(4397.65) NS(283.07) EW(4388.53)

VS
ft

0.0 5000.0 10000.0