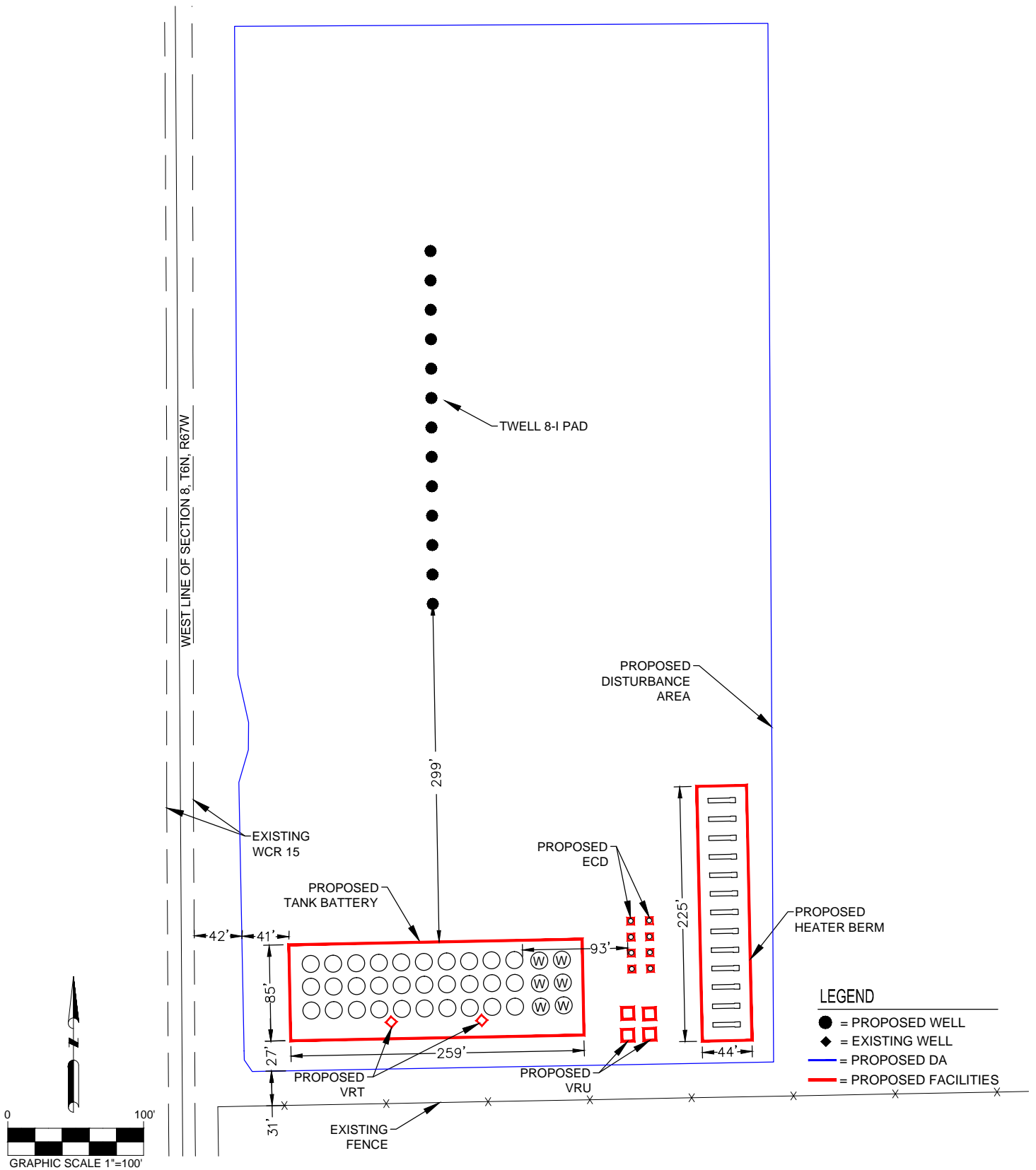


TWELL 8-I PRODUCTION FACILITY LAYOUT



PREPARED BY:



FIELD DATE:
02-19-14

DRAWING DATE:
05-13-14

BY:
KAD

CHECKED BY:
MLP

SITE NAME:
TWELL 8-I

SURFACE LOCATION:
W 1/2, SW 1/4, SEC. 8, T6N, R67W, 6TH P.M.
WELD COUNTY, COLORADO

PREPARED FOR:

EXTRACTION
OIL & GAS