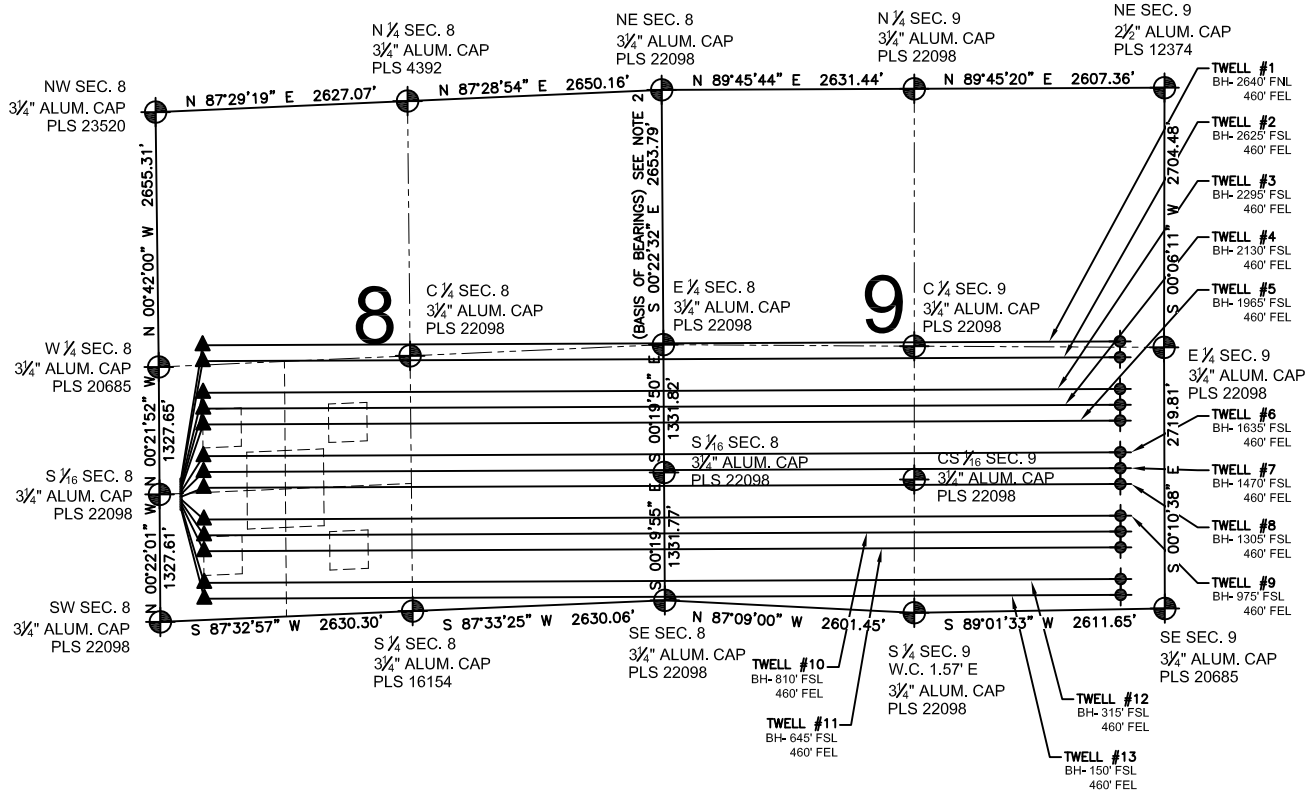


TWELL 8-I MULTI-WELL PLAN

SECTION 8, TOWNSHIP 6 NORTH, RANGE 67 WEST, 6TH P.M.



LEGEND

- ⊕ = EXISTING MONUMENT ▲ = LANDING POINT
- = PROPOSED WELL LP = LANDING POINT
- ◆ = EXISTING WELL BH = BOTTOM HOLE
- ⬮ = BOTTOM HOLE

NOTES:

- THIS FIELD SURVEY CONFORMS TO THE MINIMUM STANDARDS SET BY THE C.O.G.C.C., RULE NO. 215
- BEARINGS AND DISTANCE SHOWN HEREON ARE GRID AND BASED ON THE COLORADO STATE PLANE COORDINATE SYSTEM, NAD 83/2011 BETWEEN MONUMENTS AS LABELED HEREON AND ELEVATIONS SHOWN ARE NAVD 88, AS DERIVED BY GPS OBSERVATIONS.
- GRID DISTANCES ARE SHOWN, AS MEASURED IN THE FIELD, WITH TIES TO WELLS MEASURED PERPENDICULAR TO SECTION LINES.

NOTES:

TWELL #1 TO BE AT 1474' FSL, 224' FWL.
BOTTOM HOLE AT 2640' FNL & 460' FEL.
TWELL #2 TO BE AT 1448' FSL, 224' FWL.
BOTTOM HOLE AT 2625' FSL & 460' FEL.
TWELL #3 TO BE AT 1423' FSL, 224' FWL.
BOTTOM HOLE AT 2295' FSL & 460' FEL.
TWELL #4 TO BE AT 1397' FSL, 224' FWL.
BOTTOM HOLE AT 2130' FSL & 460' FEL.
TWELL #5 TO BE AT 1371' FSL, 224' FWL.
BOTTOM HOLE AT 1965' FSL & 460' FEL.
TWELL #6 TO BE AT 1345' FSL, 224' FWL.
BOTTOM HOLE AT 1635' FSL & 460' FEL.

TWELL #7 TO BE AT 1319' FSL, 224' FWL.
BOTTOM HOLE AT 1470' FSL & 460' FEL.
TWELL #8 TO BE AT 1293' FSL, 224' FWL.
BOTTOM HOLE AT 1305' FSL & 460' FEL.
TWELL #9 TO BE AT 1267' FSL, 224' FWL.
BOTTOM HOLE AT 975' FSL & 460' FEL.
TWELL #10 TO BE AT 1241' FSL, 224' FWL.
BOTTOM HOLE AT 810' FSL & 460' FEL.
TWELL #11 TO BE AT 1215' FSL, 224' FWL.
BOTTOM HOLE AT 645' FSL & 460' FEL.
TWELL #12 TO BE AT 1189' FSL, 224' FWL.
BOTTOM HOLE AT 315' FSL & 460' FEL.
TWELL #13 TO BE AT 1163' FSL, 224' FWL.
BOTTOM HOLE AT 150' FSL & 460' FEL.

PREPARED BY:

PFS



Petroleum Field Services, LLC
7535 Hilltop Circle
Denver, CO 80229

EXTRACTION OIL & GAS

FIELD DATE:
02-19-14

DRAWING DATE:
03-18-14

BY:

JLD

CHECKED:

DRF

PAD NAME:

TWELL 8-I

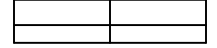
SURFACE LOCATION:

W 1/2 SW 1/4, SEC. 8, T6N, R67W, 6TH P.M.

WELD COUNTY, COLORADO



0 1000 2000



SCALE: 1"=2000'