

T7S, R96W, 6th P.M.

WPX Energy Rocky Mountain, LLC

Well location, GM 702RD-4-HN1 (SURFACE LOCATION), located as shown in the SW 1/4 NE 1/4 of Section 4, T7S, R96W, 6th P.M., Garfield County, Colorado.

BASIS OF ELEVATION

SPOT ELEVATION AT THE NORTHWEST CORNER OF SECTION 30, T5S, R95W, 6th P.M. TAKEN FROM THE FORKED GULCH QUADRANGLE, COLORADO, GARFIELD COUNTY, 7.5 MINUTE SERIES (TOPOGRAPHICAL MAP) PUBLISHED BY THE UNITED STATES DEPARTMENT OF THE INTERIOR, GEOLOGICAL SURVEY. SAID ELEVATION IS MARKED AS BEING 5966 FEET.

BASIS OF BEARINGS

BASIS OF BEARINGS IS A G.P.S. OBSERVATION.

NOTE:
SEE CURRENT FOOTAGE PLAT #6 FOR
EXISTING IMPROVEMENT WITHIN 500'
OF THE PROPOSED WELL HEAD.



PLAT #1



SCALE
CERTIFICATE

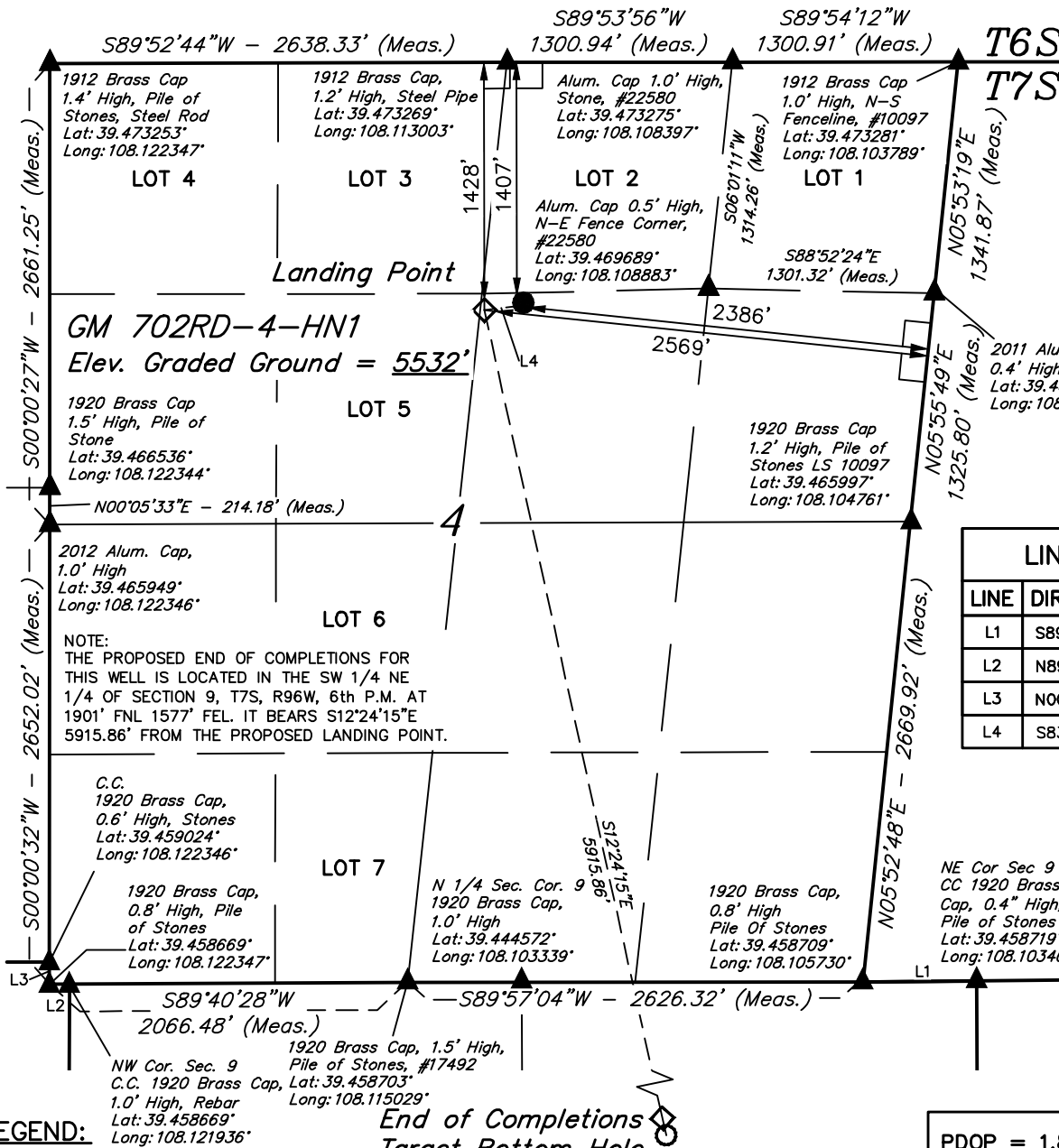
THIS IS TO CERTIFY THAT THE ABOVE PLAT WAS PREPARED AND LOCATION AS SHOWN WAS STAKED ON THE GROUND FROM FIELD NOTES OF ACTUAL SURVEYS MADE BY ME OR UNDER MY SUPERVISION AND THAT THE SAME ARE TRUE AND CORRECT TO THE BEST OF MY KNOWLEDGE AND BELIEF.

REVISED: 04-29-14
REVISED: 04-21-14
REVISED: 04-15-14

REGISTERED LAND SURVEYOR
REGISTRATION NO. 17492
STATE OF COLORADO 04-29-14


UINTAH ENGINEERING & LAND SURVEYING
85 SOUTH 200 EAST - VERNAL, UTAH 84078
(435) 789-1017

SCALE 1" = 1000'	DATE SURVEYED: 02-06-13	DATE DRAWN: 03-30-14
PARTY B.J. B.B. M.D.	REFERENCES G.L.O. PLAT	
WEATHER COLD	FILE WPX Energy Rocky Mountain, LLC	

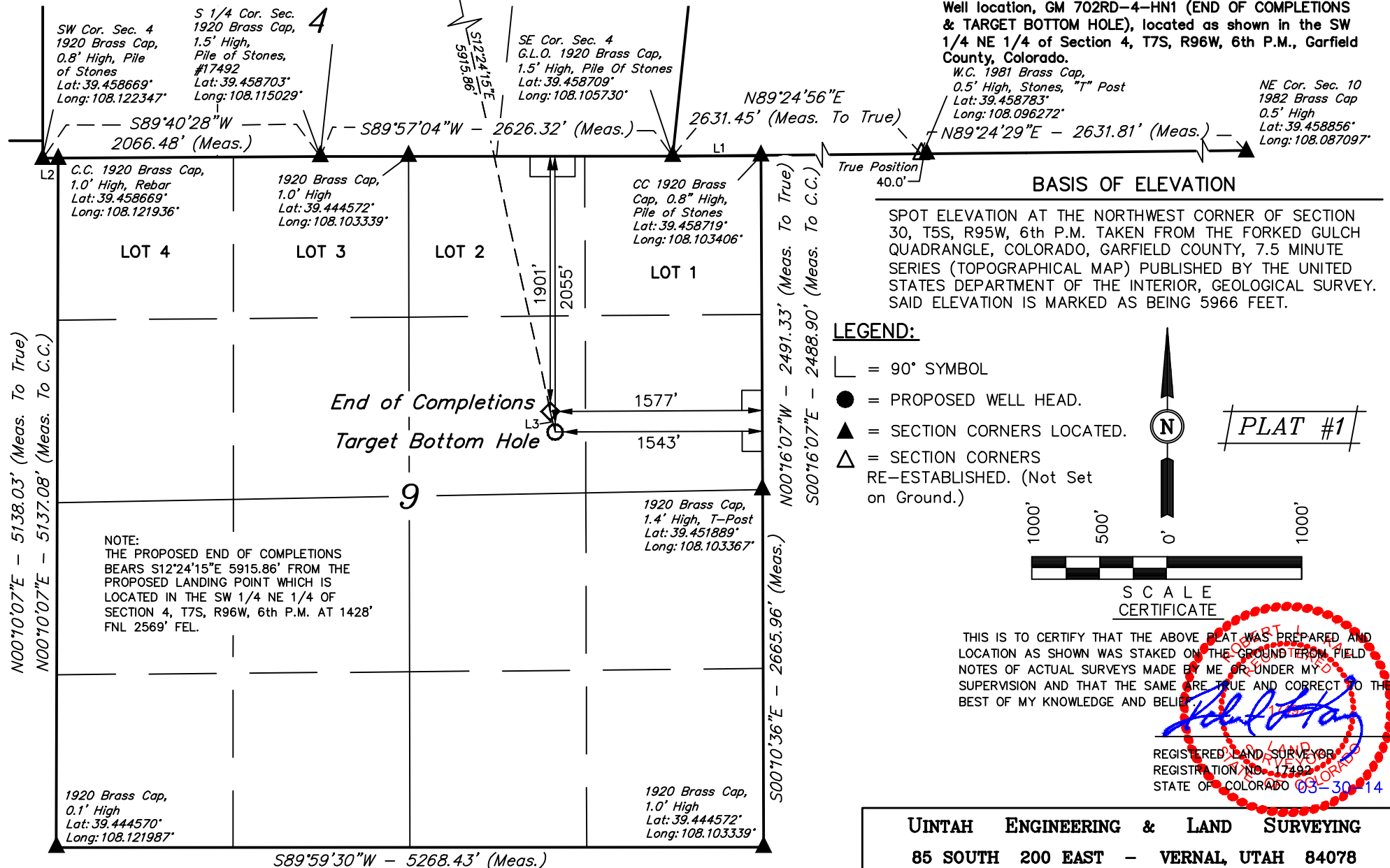


PDOP = 1.8

NAD 83 (LANDING POINT)	NAD 83 (SURFACE LOCATION)
LATITUDE = 39°28'09.65" (39.469347)	LATITUDE = 39°28'09.87" (39.469408)
LONGITUDE = 108°06'48.46" (108.113461)	LONGITUDE = 108°06'46.08" (108.112800)
STATE PLANE-(COLO. CENTRAL-NAD 83)	STATE PLANE-(COLO. CENTRAL-NAD 83)
N = 1606450.72	N = 1606467.38
E = 2262302.84	E = 2262490.06

T7S, R96W, 6th P.M.  Landing Point

WPX Energy Rocky Mountain, LLC



S89°59'30"W - 5268.43' (Meas.)

BASIS OF BEARINGS

BASIS OF BEARINGS IS A G.P.S. OBSERVATION.

NAD 83 (END OF COMPLETIONS)	NAD 83 (TARGET BOTTOM HOLE)
LATITUDE = 39°27'12.56" (39.453489)	LATITUDE = 39°27'11.05" (39.453069)
LONGITUDE = 108°06'32.26" (108.108961)	LONGITUDE = 108°06'31.81" (108.108836)
STATE PLANE-(COLO. CENTRAL-NAD 83)	STATE PLANE-(COLO. CENTRAL-NAD 83)
N = 1600640.72	N = 1600486.09
E = 2263406.85	E = 2263437.64

LINE TABLE

LINE	DIRECTION	LENGTH
L1	S89°37'41"W	656.34'
L2	N89°51'16"W	115.68'
L3	S12°54'24"E	157.72'

UINTAH ENGINEERING & LAND SURVEYING
85 SOUTH 200 EAST - VERNAL, UTAH 84078
(435) 789-1017

SCALE 1" = 1000'	DATE SURVEYED: 02-06-13	DATE DRAWN: 03-30-14
PARTY B.J. B.B. M.D.	REFERENCES G.L.O. PLAT	
WEATHER COLD	FILE WPX Energy Rocky Mountain, LLC	