



RADIAL CEMENT BOND LOG GAMMA RAY CCL

Company		Kerr McGee Oil & Gas					
Well		LUHMAN UPRR 32-31 #1					
Field		WATTENBERG					
County		WELD					
State		CO					
Location:		APL # : 05-123-12856 SWNE					
Permanent Datum		GL	Elevation				
Log Measured From		KB - 11	5025				
Drilling Measured From		KB	KB, 5036 D.F. 5035 G.L. 5025				
Date		5-9-2014					
Run Number		ONE					
Depth Driller		7548					
Depth Logger		4070					
Bottom Logged Interval		4059					
Top Log Interval		SURFACE					
Open Hole Size		4.5					
Type Fluid		WATER					
Density / Viscosity		NA					
Max. Recorded Temp.		143					
Estimated Cement Top		70					
Time Well Ready		NA					
Time Logger on Bottom		NA					
Equipment Number		7770					
Location		GREELEY					
Recorded By		C.JONES					
Witnessed By		R.THOMPSON					
Borehole Record							
Run Number	Bit	From	To	Size	Weight	From	To
ONE							
TWO							
Casing Record				Size	Wgt/Ft	Top	Bottom
Surface String							
Prot. String							
Production String							
Liner							

<<< Fold Here >>>

All interpretations are opinions based on inferences from electrical or other measurements and we cannot and do not guarantee the accuracy or correctness of any interpretation, and we shall not, except in the case of gross or willful negligence on our part, be liable or responsible for any loss, costs, damages, or expenses incurred or sustained by anyone resulting from any interpretation made by any of our officers, agents or employees. These interpretations are also subject to our general terms and conditions set out in our current Price Schedule.



Comments

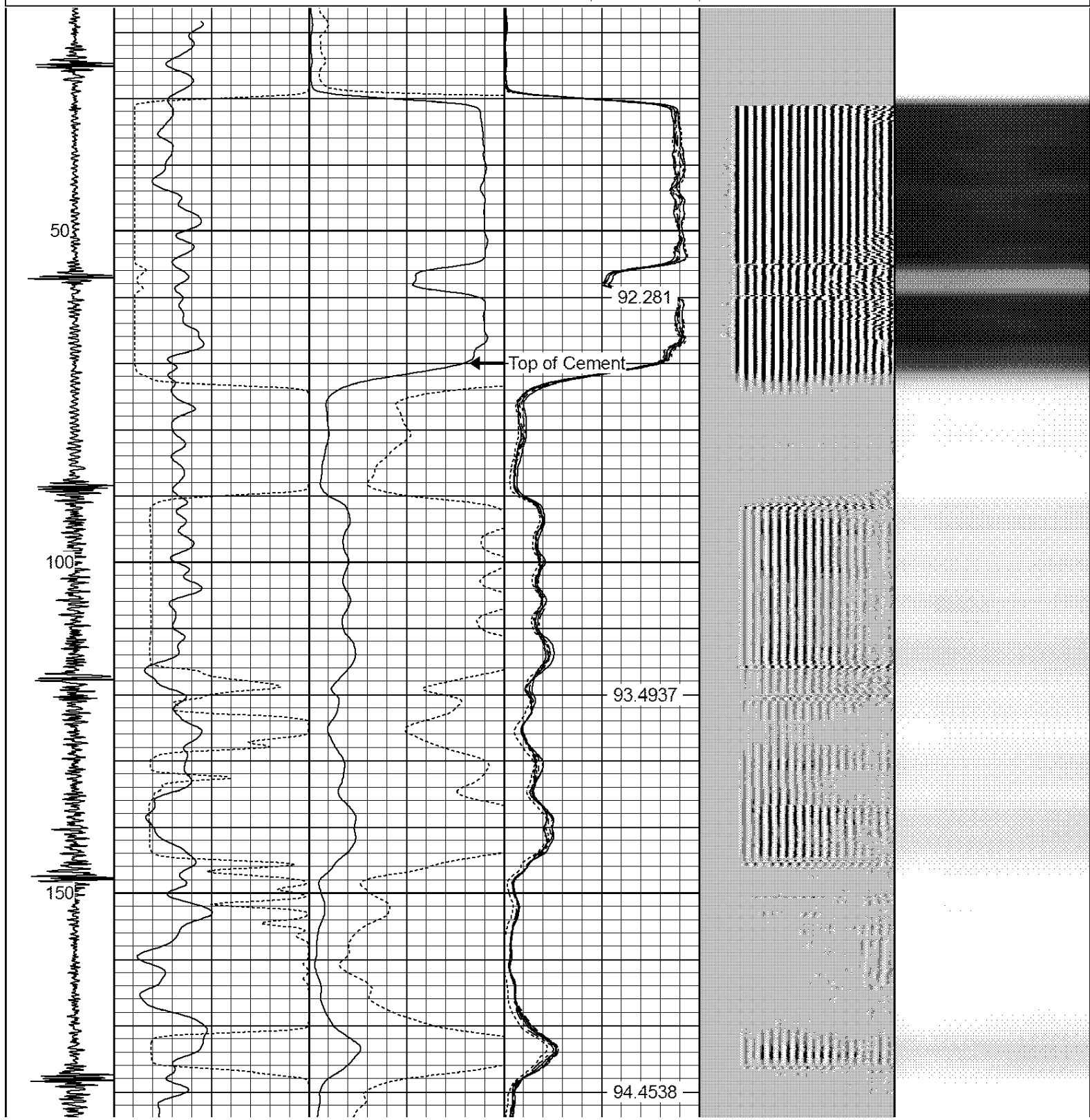
RAN CBL TO VERIFY CEMENT BOND AT SURFACE.
TIED INTO WARRIOR ENERGY CBL FROM 5-6-2014.

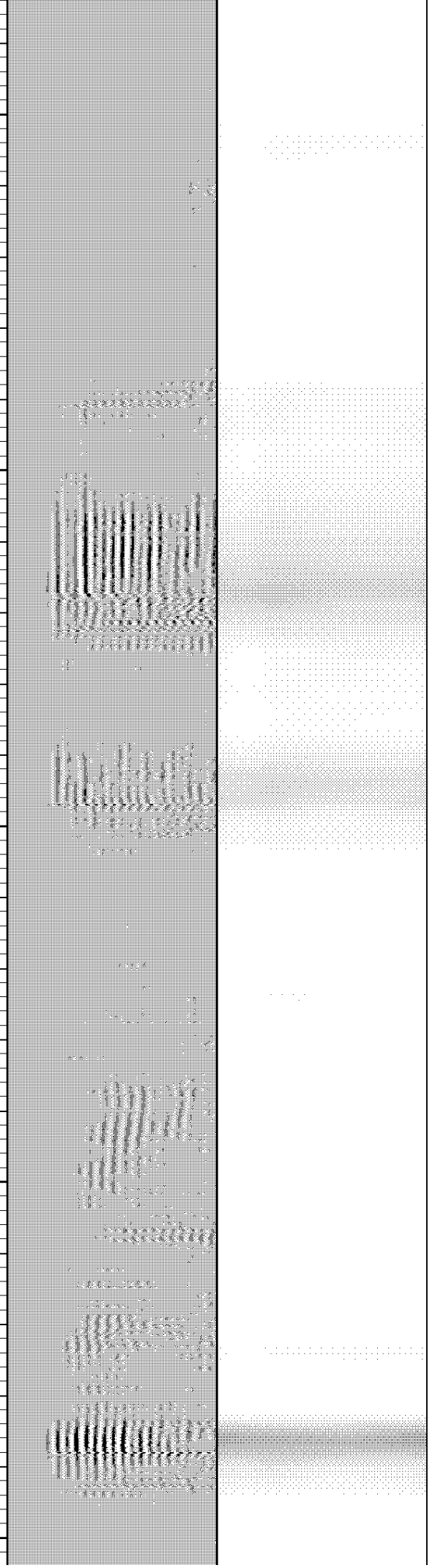
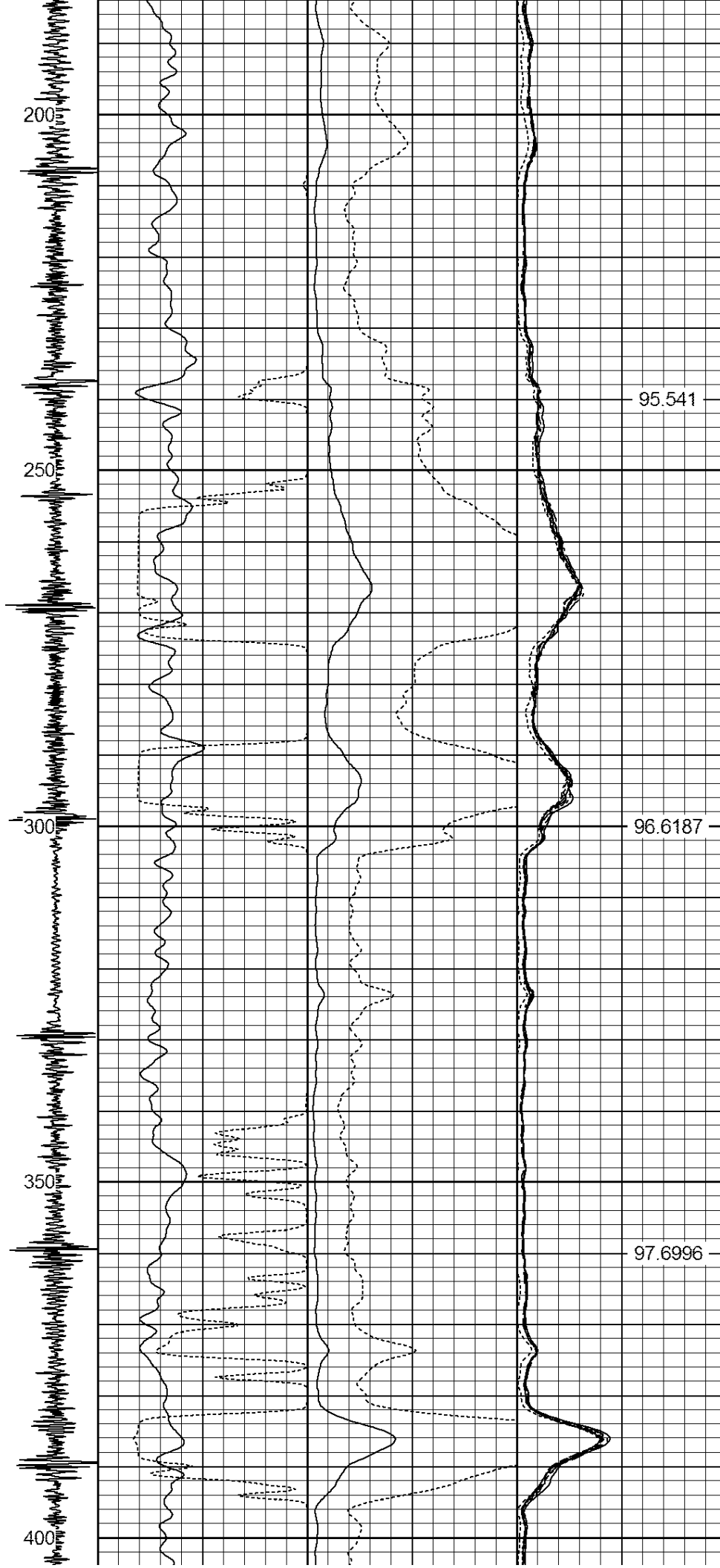
THANK YOU FOR USING WARRIOR ENERGY!

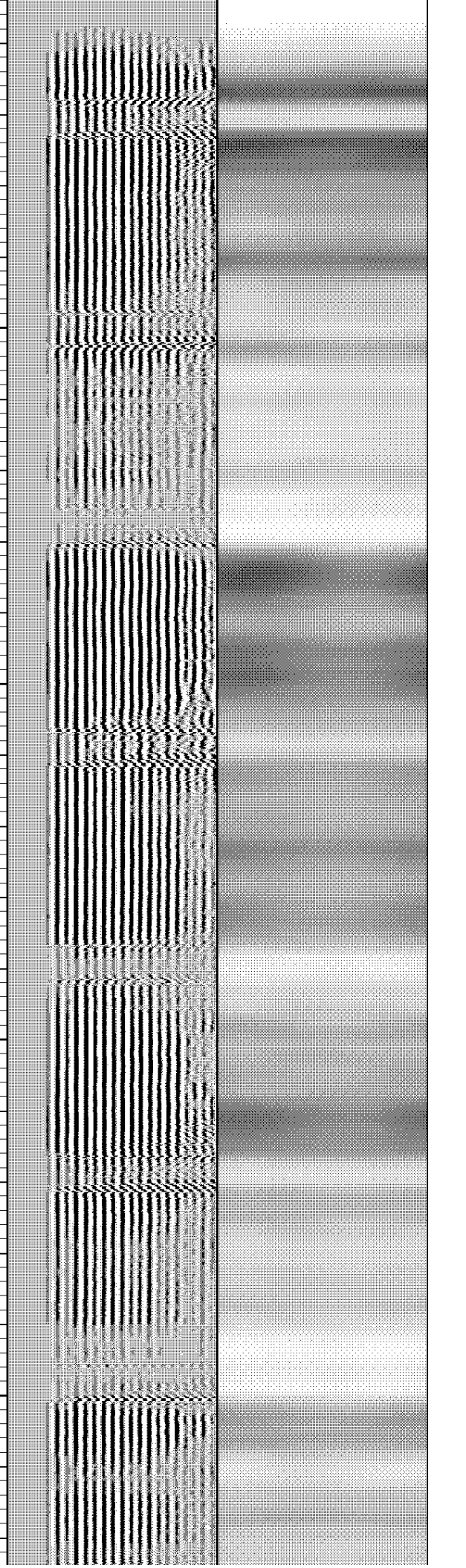
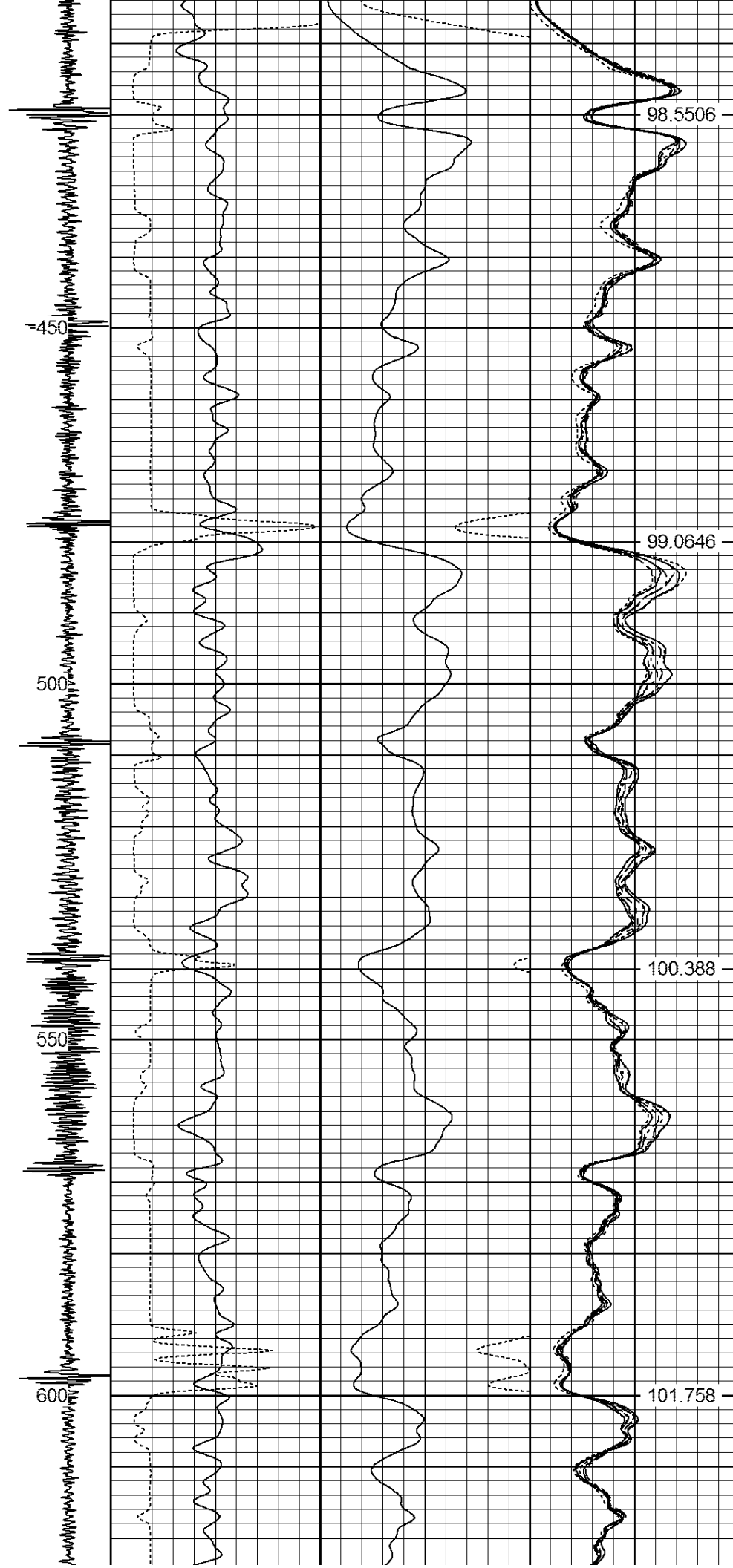
Sensor	Offset (ft)	Schematic	Description	Len (ft)	OD (in)	Wt (lb)
CNLSC	17.92		CNT-Probe_B (275) 6 bow centralizer	1.50	2.75	18.00
CNSSC	17.08					

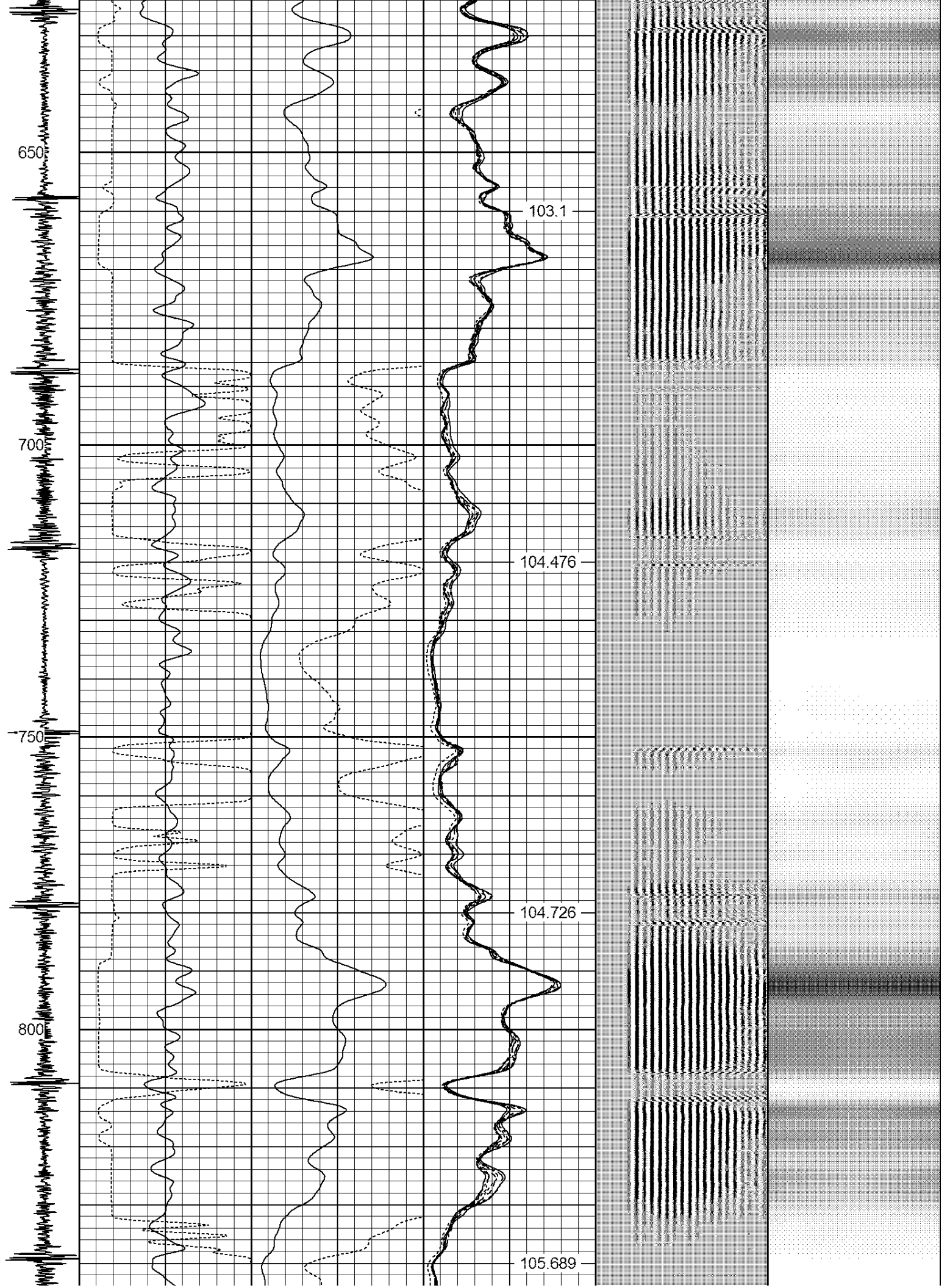
HEADVOLT	16.25					
IntTemp	14.83					
WVF3FT	11.58		RBT-Probe (Base) Probe Radli Bond Tool with Digital Telemetry	8.92	2.75	90.00
WVFCAL	11.58					
WVFS1	11.58					
WVFS2	11.58					
WVFS3	11.58					
WVFS4	11.58					
WVFS5	11.58					
WVFS6	11.58					
WVFS7	11.58					
WVFS8	11.58					
WVF5FT	10.58					
			CENT-Probe (PT_MONO2)	3.00	2.75	35.00
CCL	3.64					
			GR-Probe (275) Probe 2.75"	4.33	2.75	30.00
GR	0.90					
<div>Dataset: luhman uprr 3 31 1.db: field/well/run1/pass3 Total Length: 17.75 ft Total Weight: 173.00 lb O.D. 2.75 in</div>						

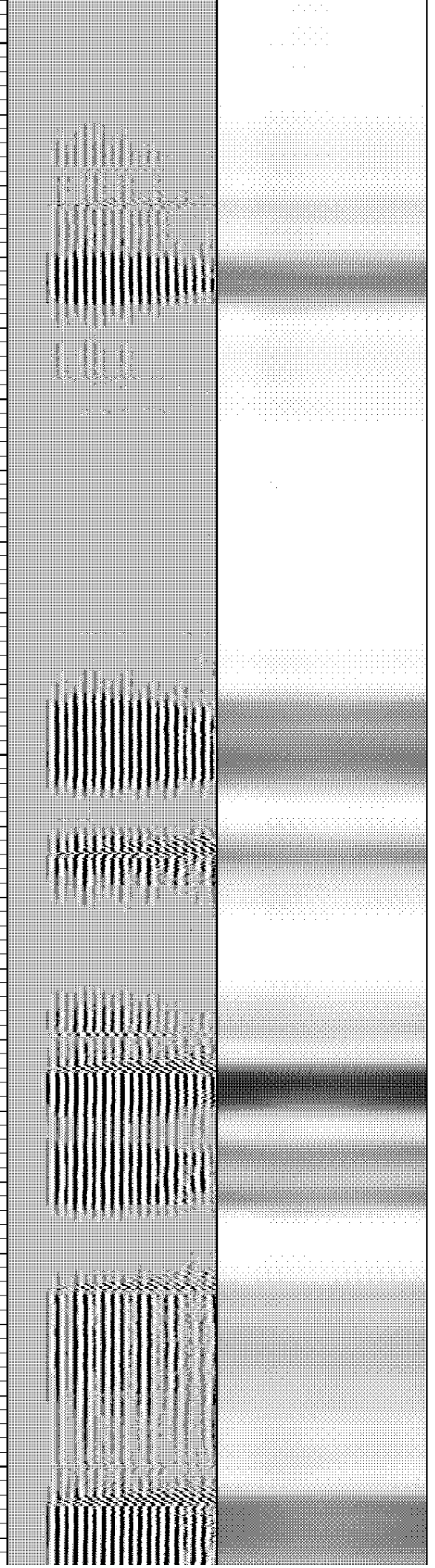
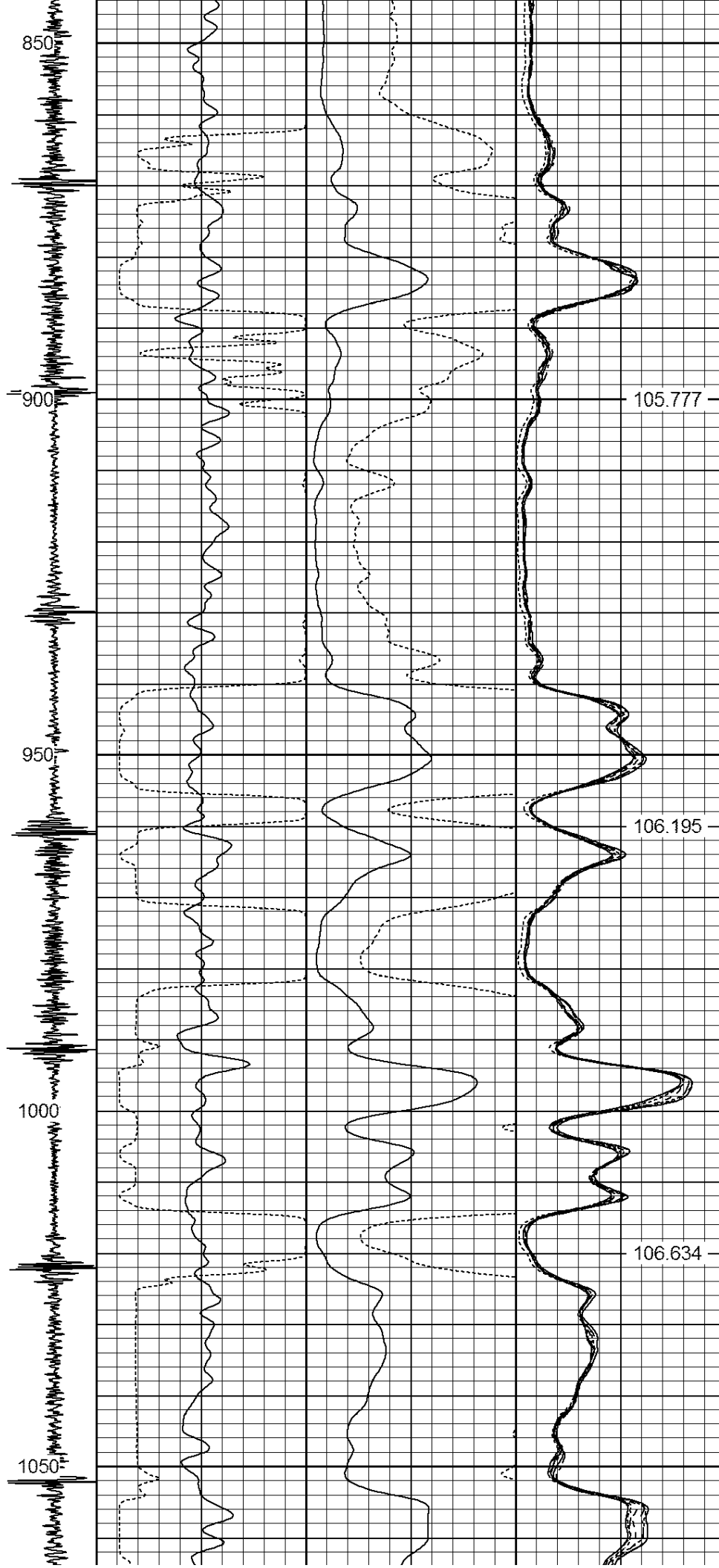
-9	CCL	5	200	TT (usec)	800	0	AMP (mV)	100	0	AMPS1	100	200	VDL	1200	1	Cement Map	8
LSPD (ft/min)	0		0	GR (GAPI)	200	0	AMPx5 (mV)	20	0	AMPS2	100			1	100		
	200		200	GR (GAPI)	400				0	AMPS4	100						
0	250								0	AMPS5	100						
									0	AMPS6	100						
									0	AMPS7	100						
									0	AMPS8	100						
											IntTemp (degF)						

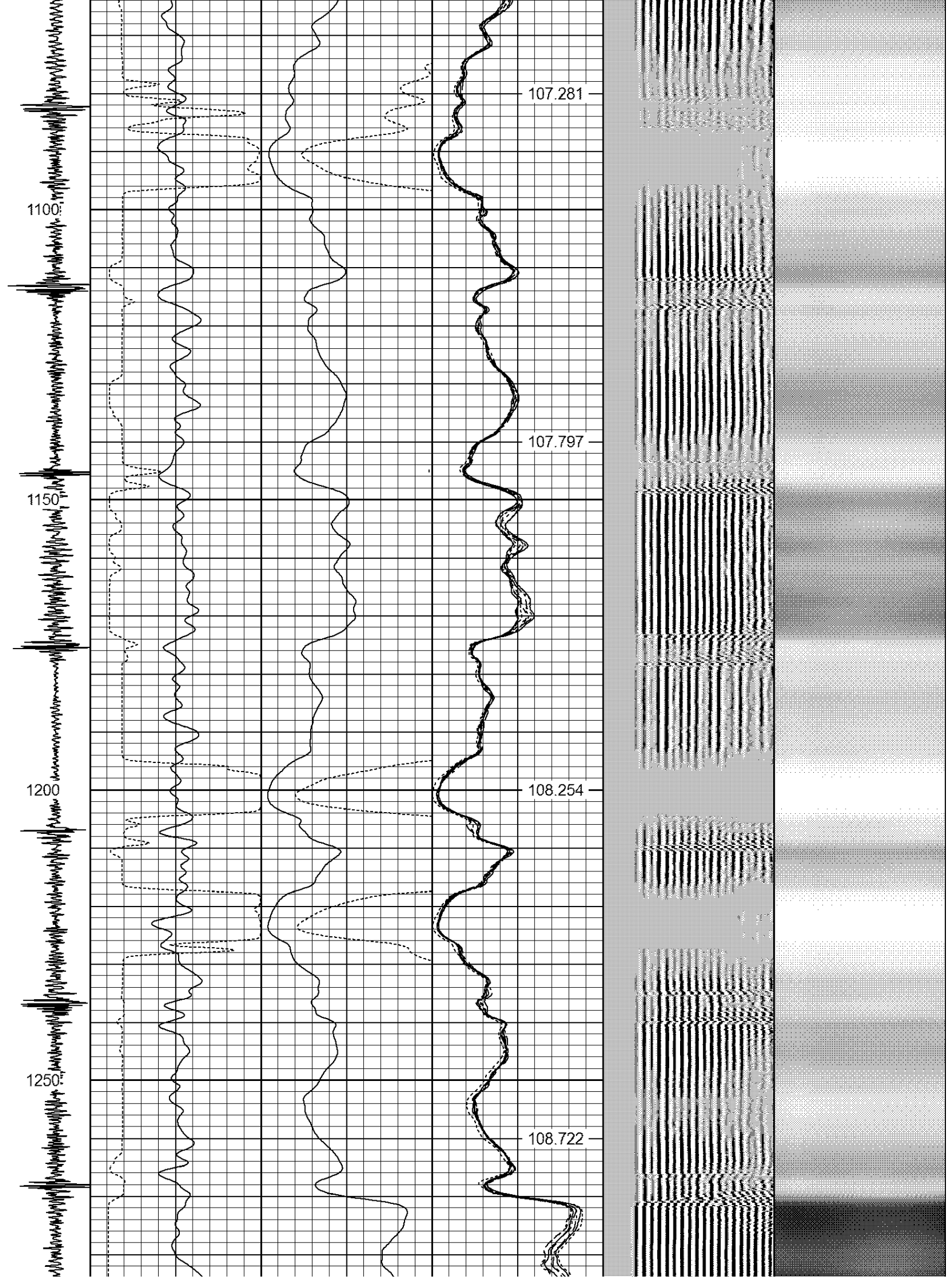


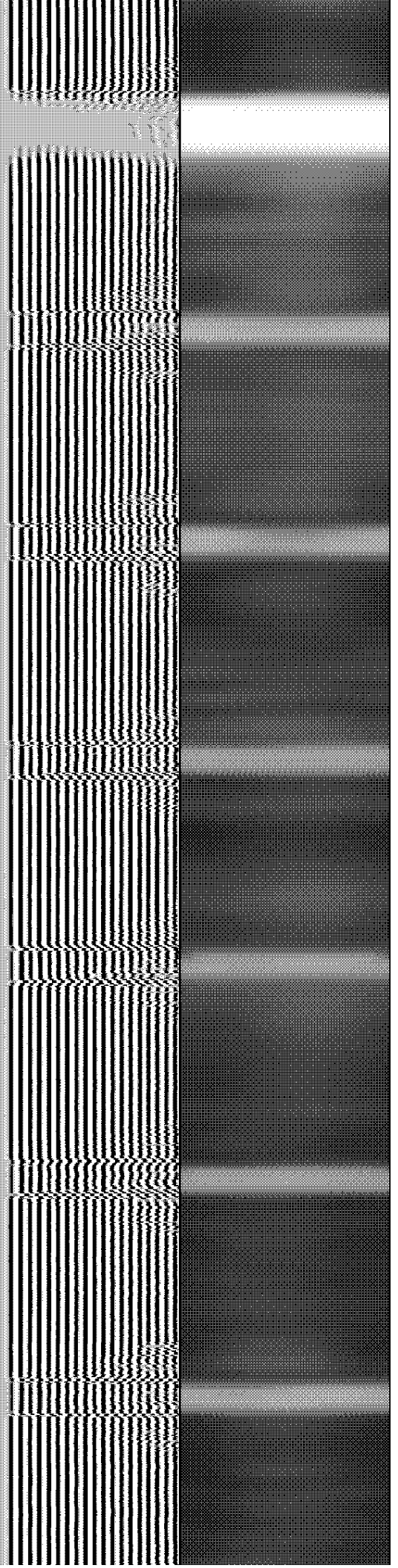
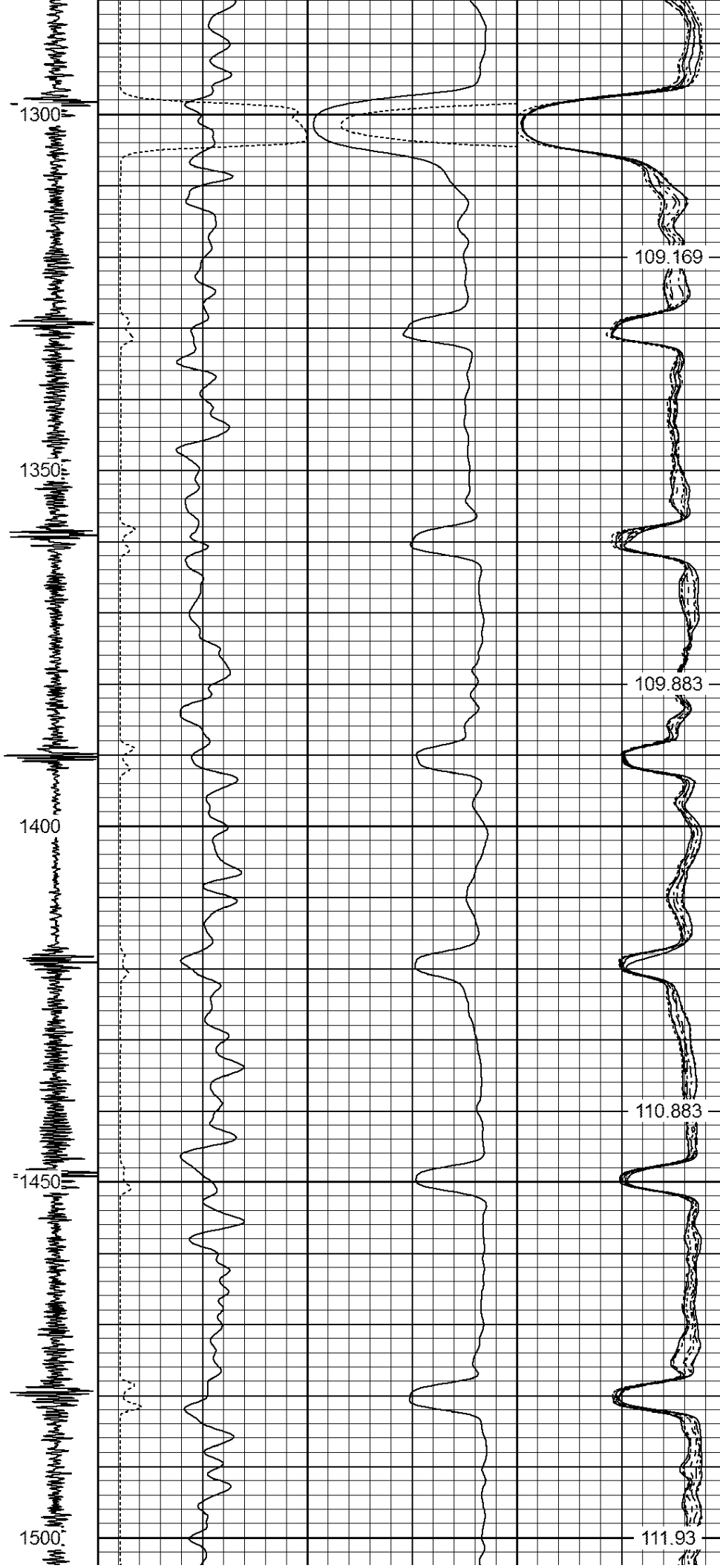


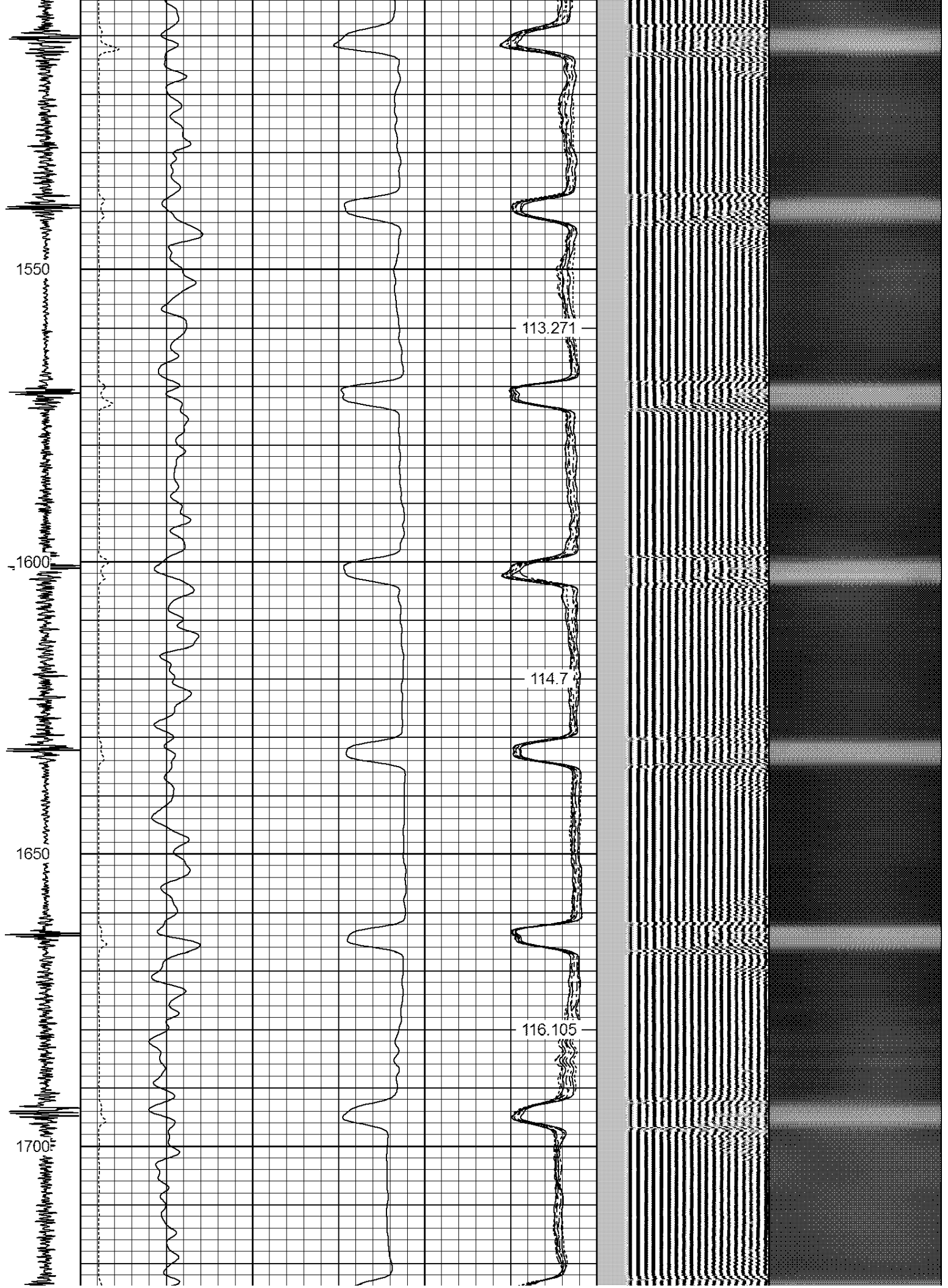


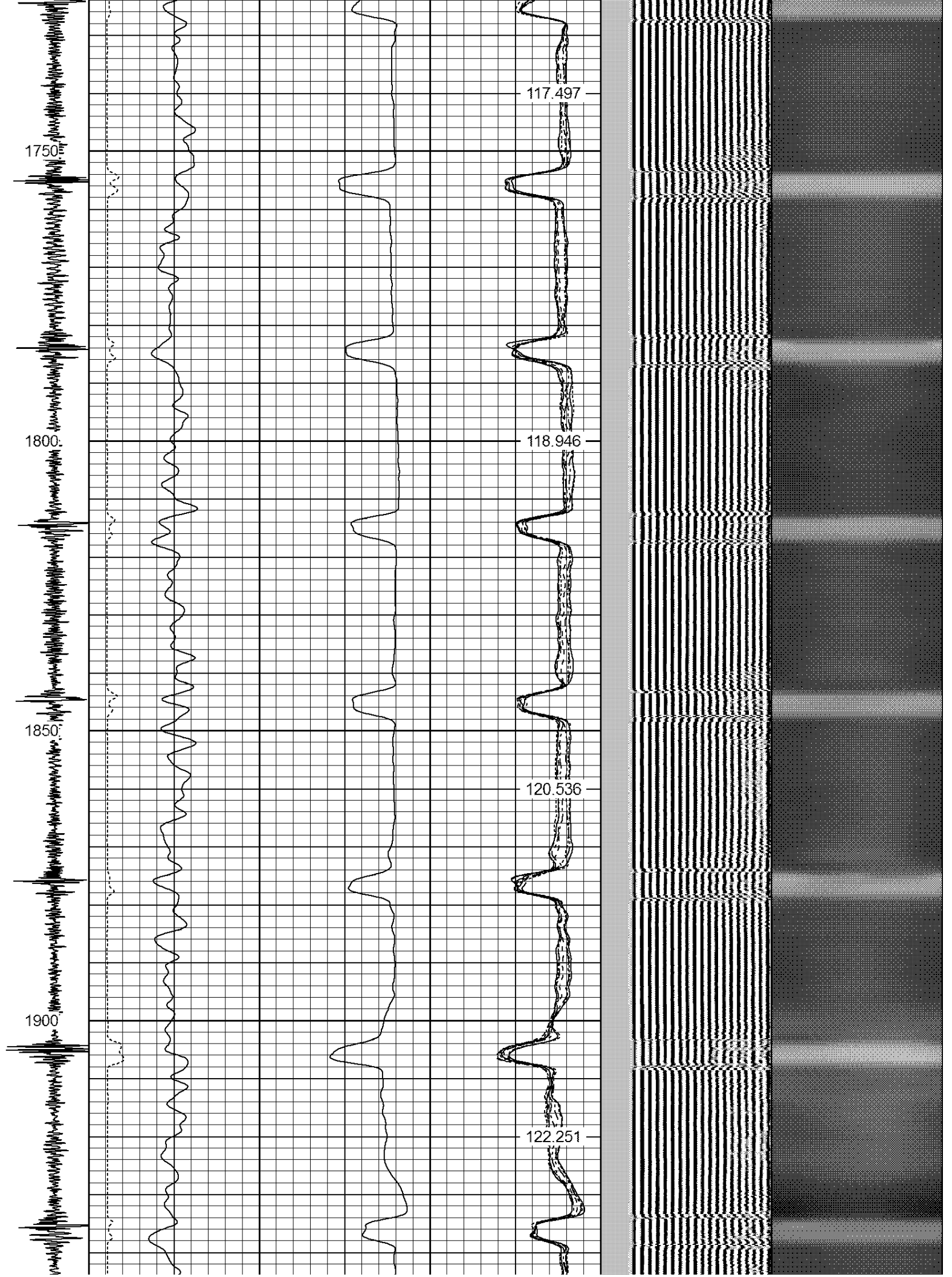


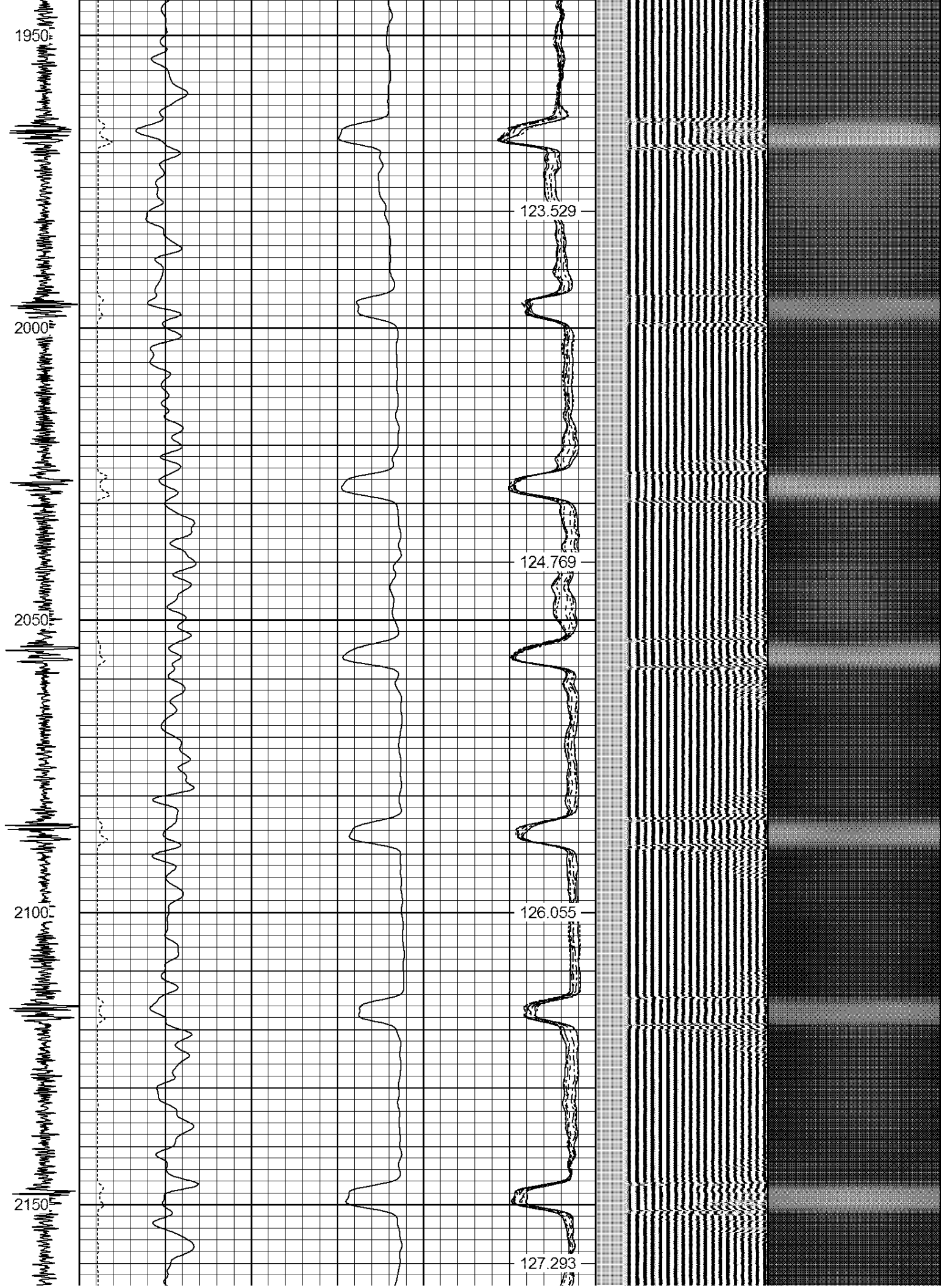




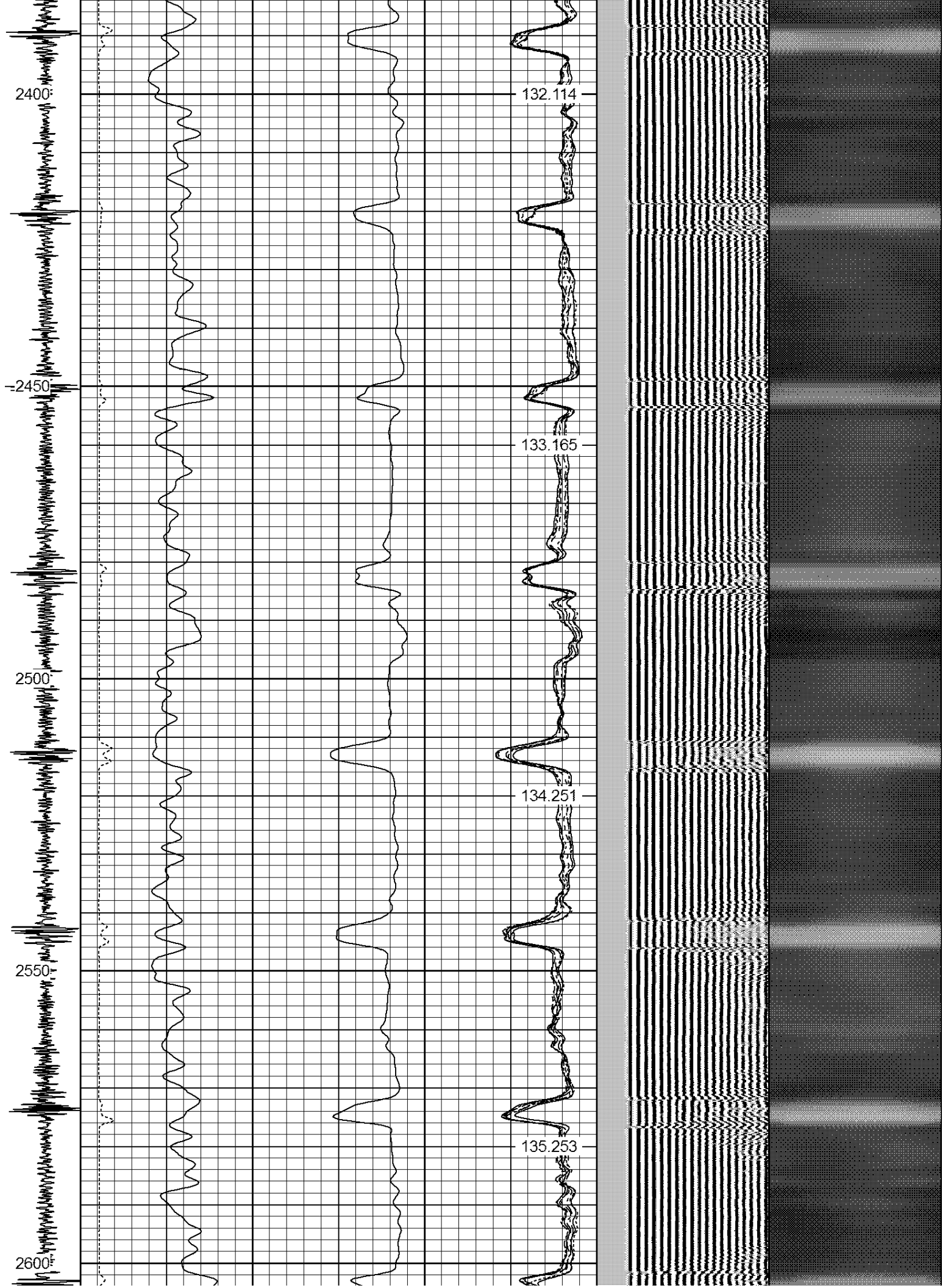


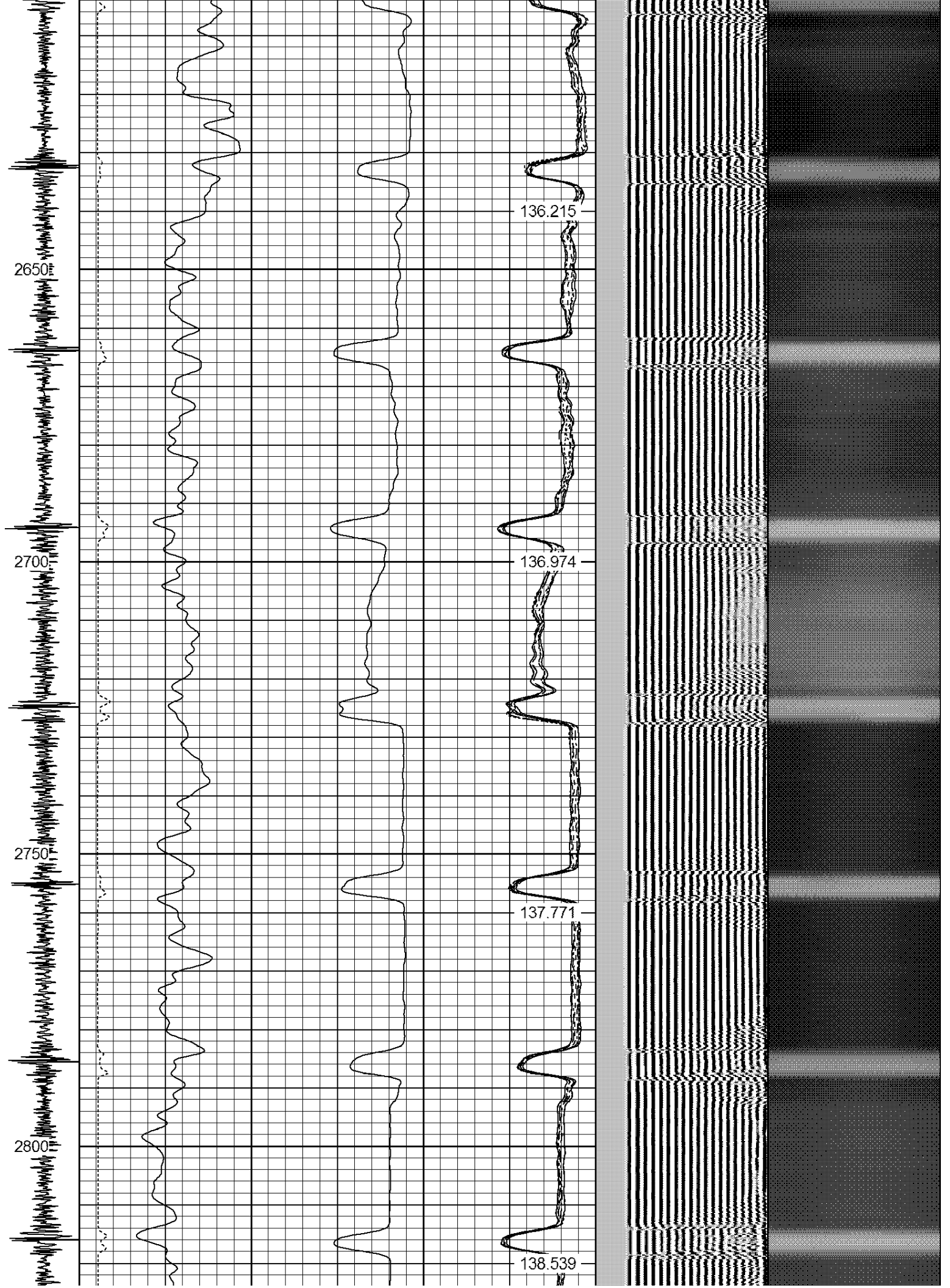


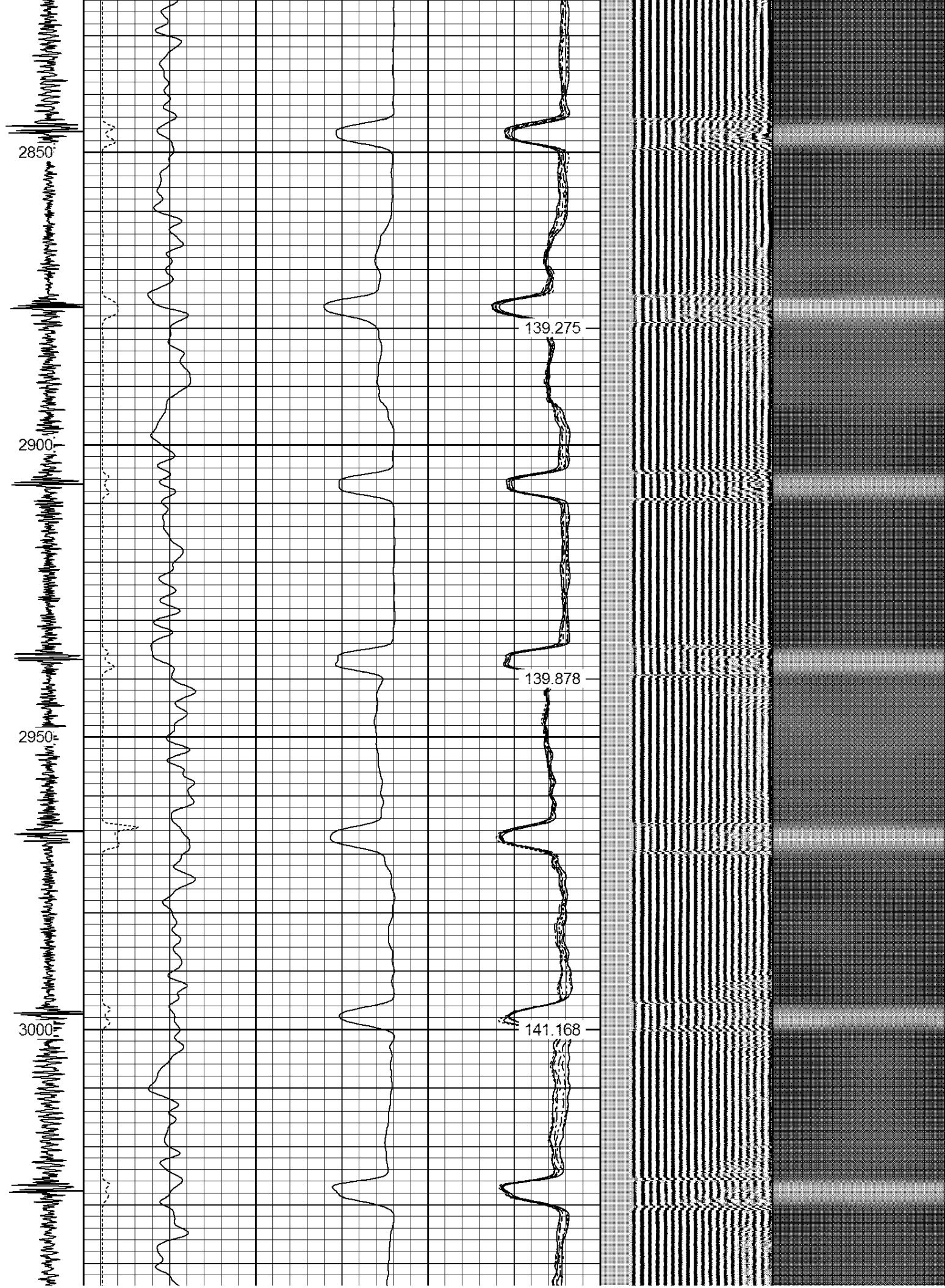




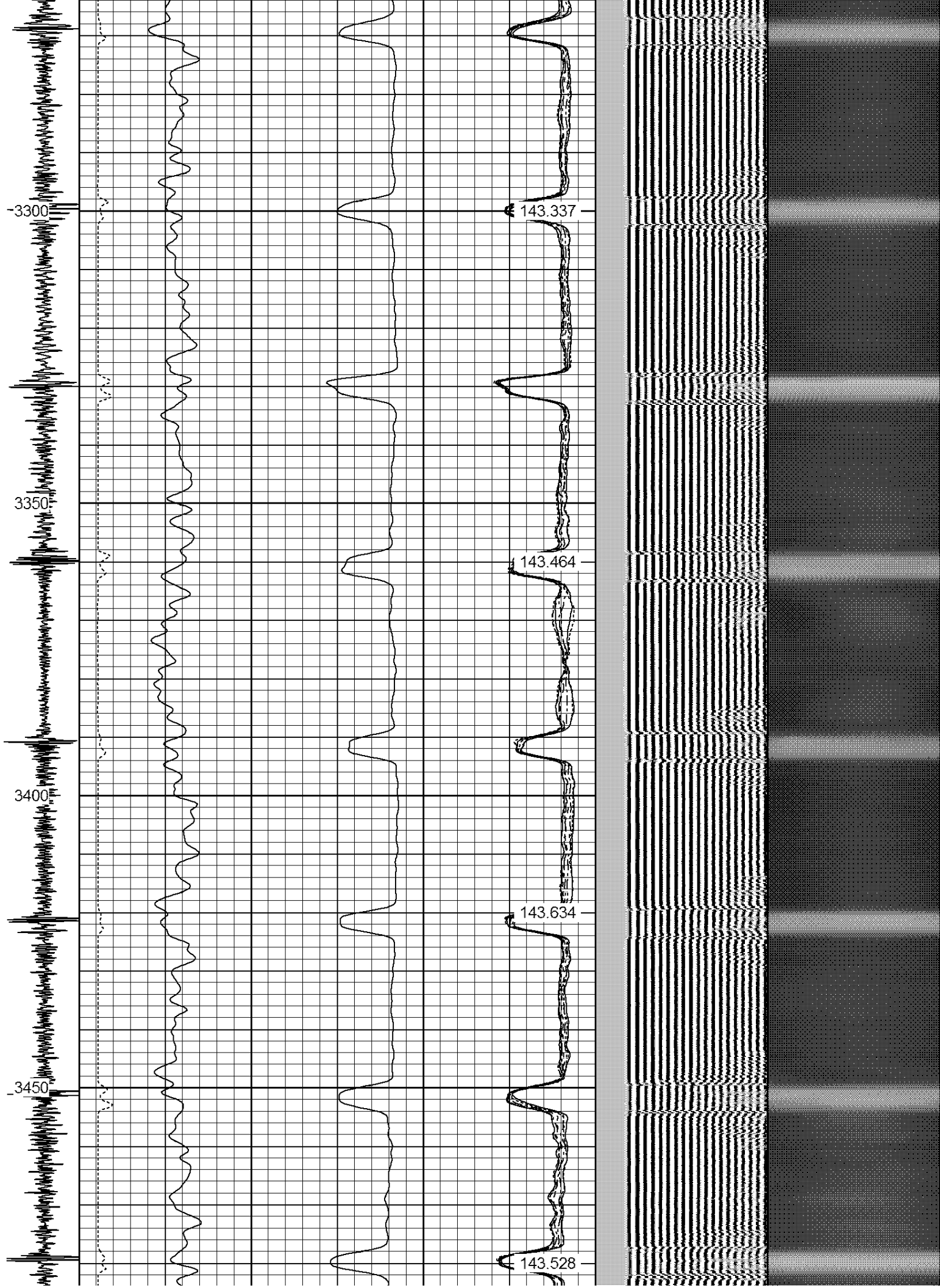


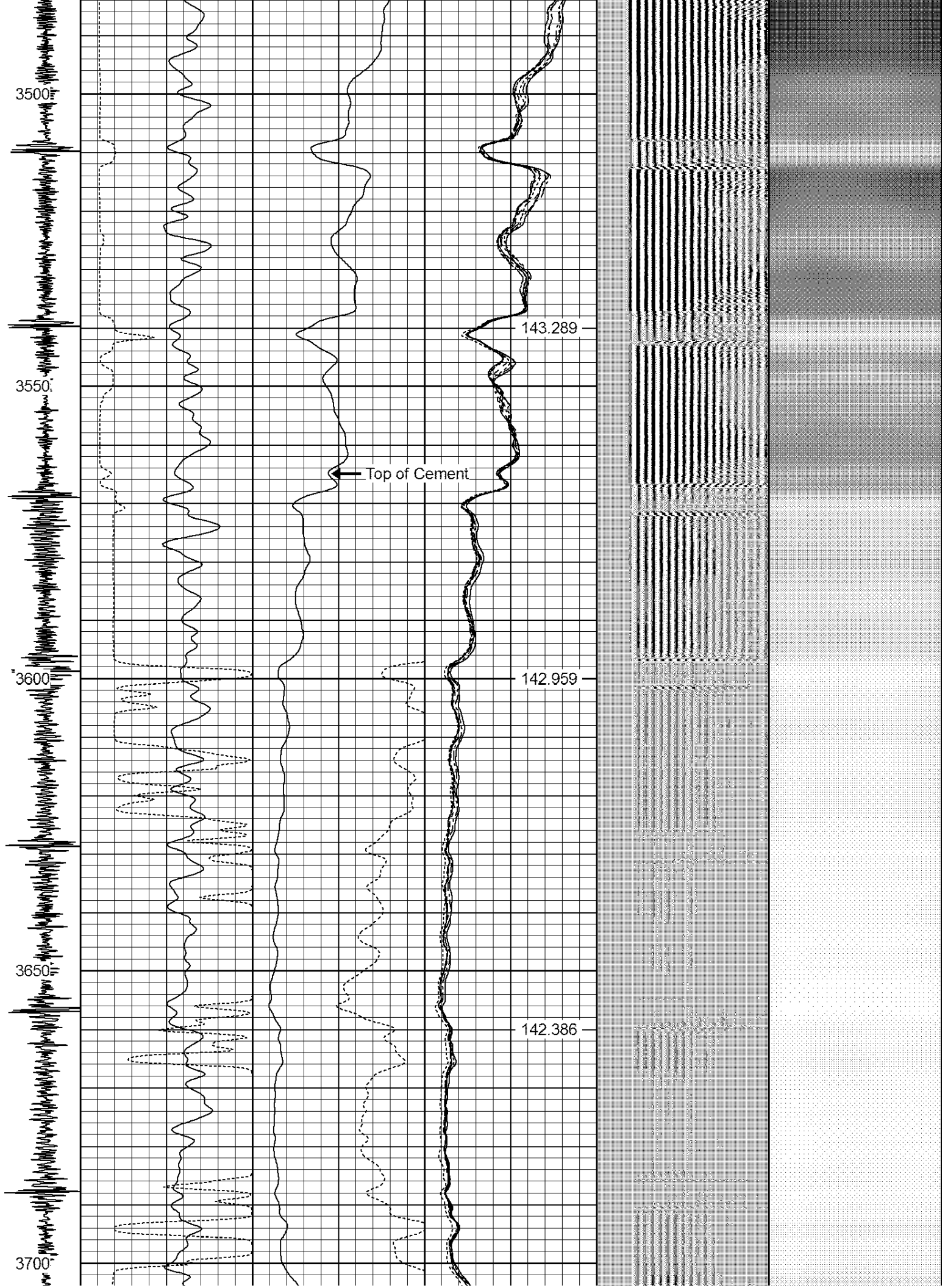


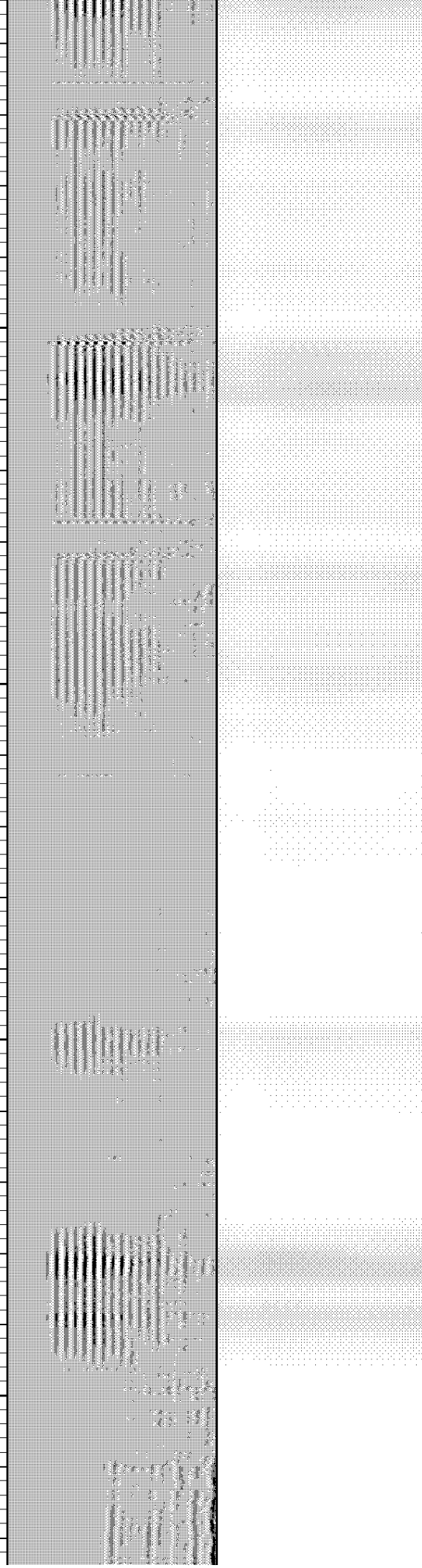
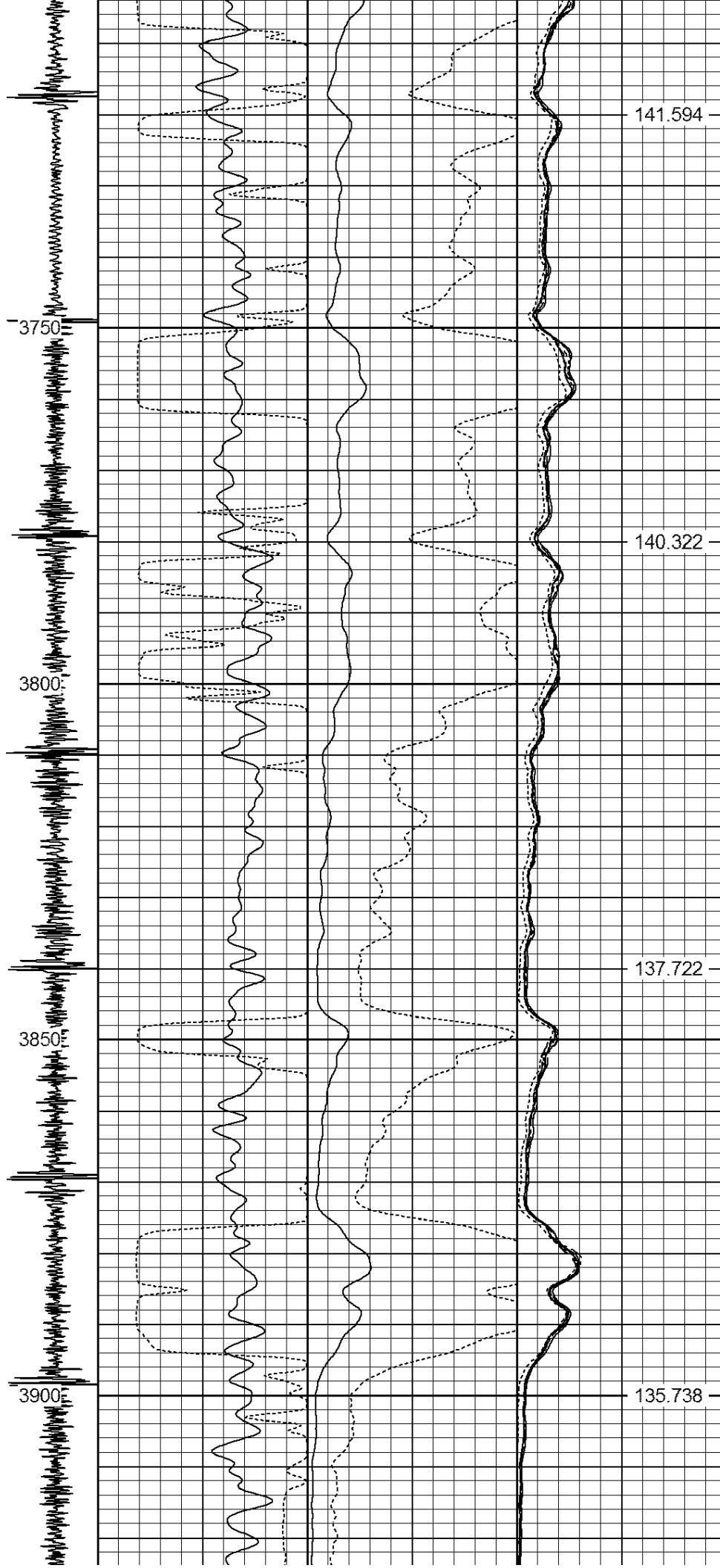


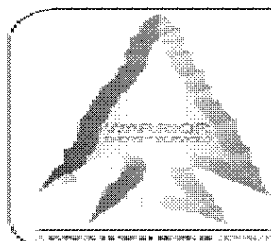
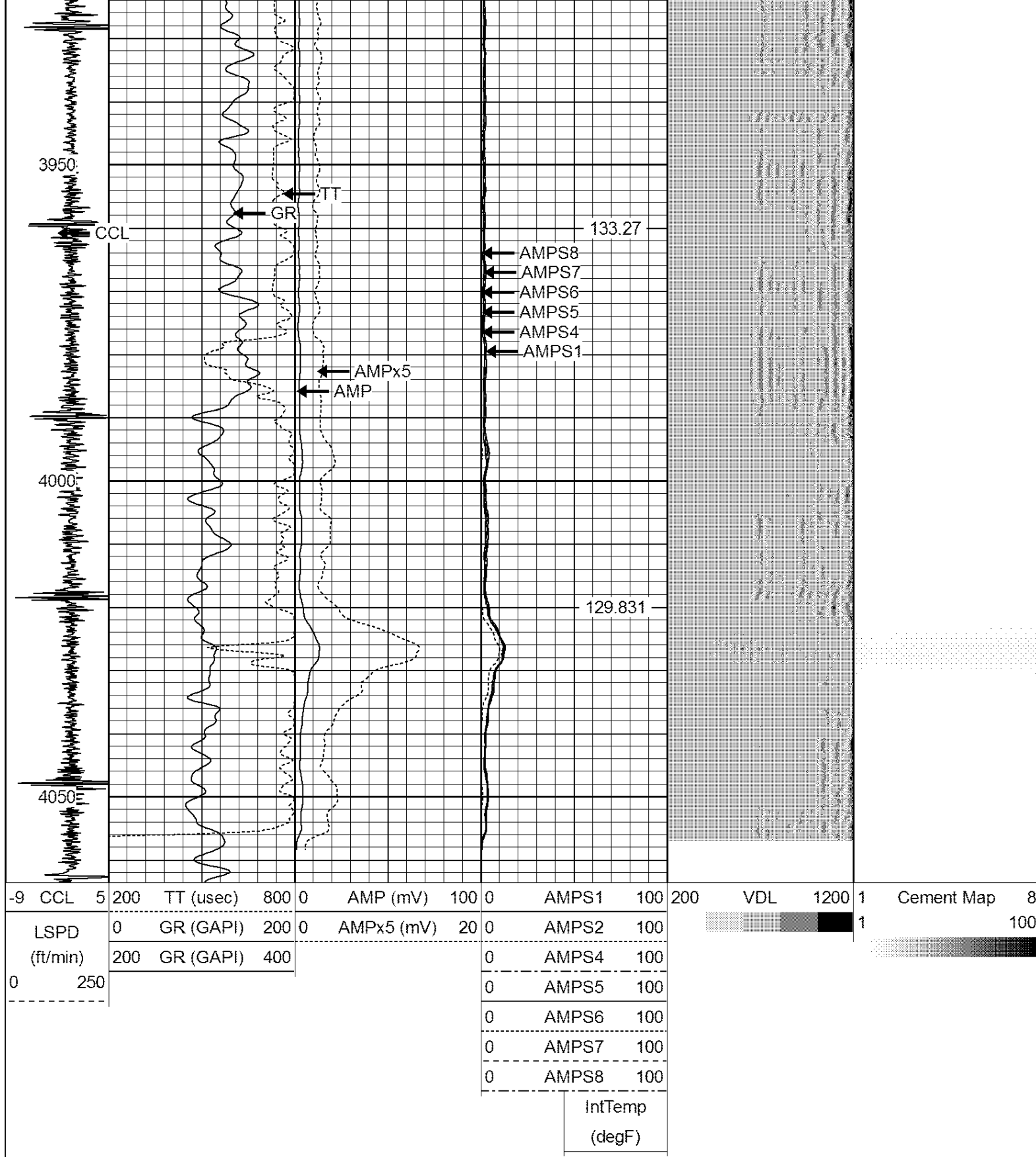












WARRIOR
ENERGY SERVICES

Company Kerr McGee Oil and Gas

Well LUHMAN UPRR 32-31 #1

Field WATTENBERG

County WELD

State CO