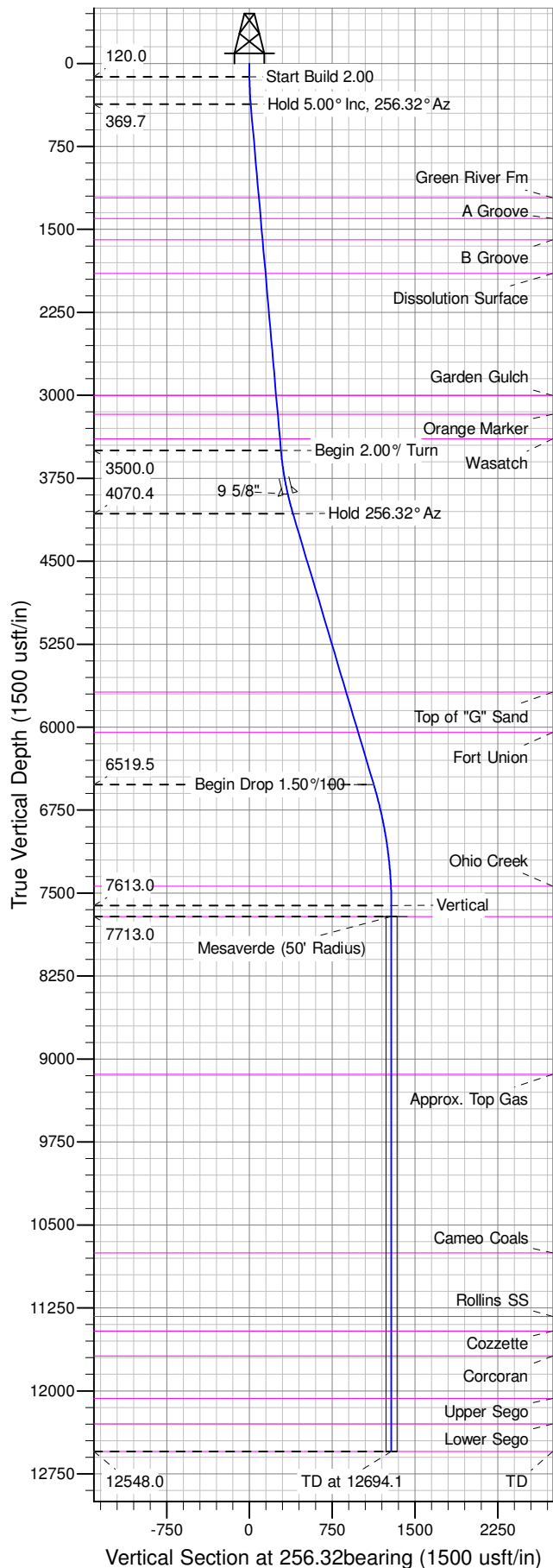
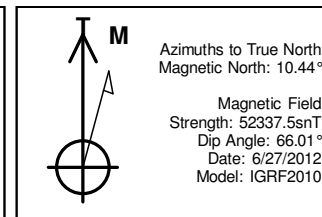
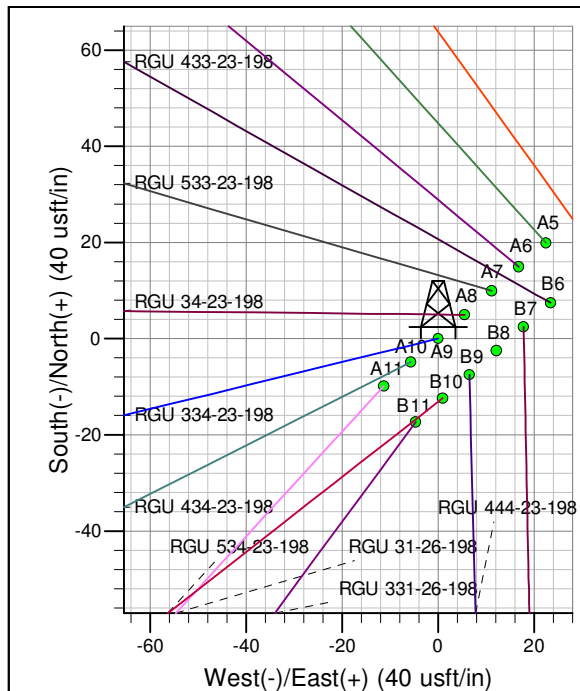
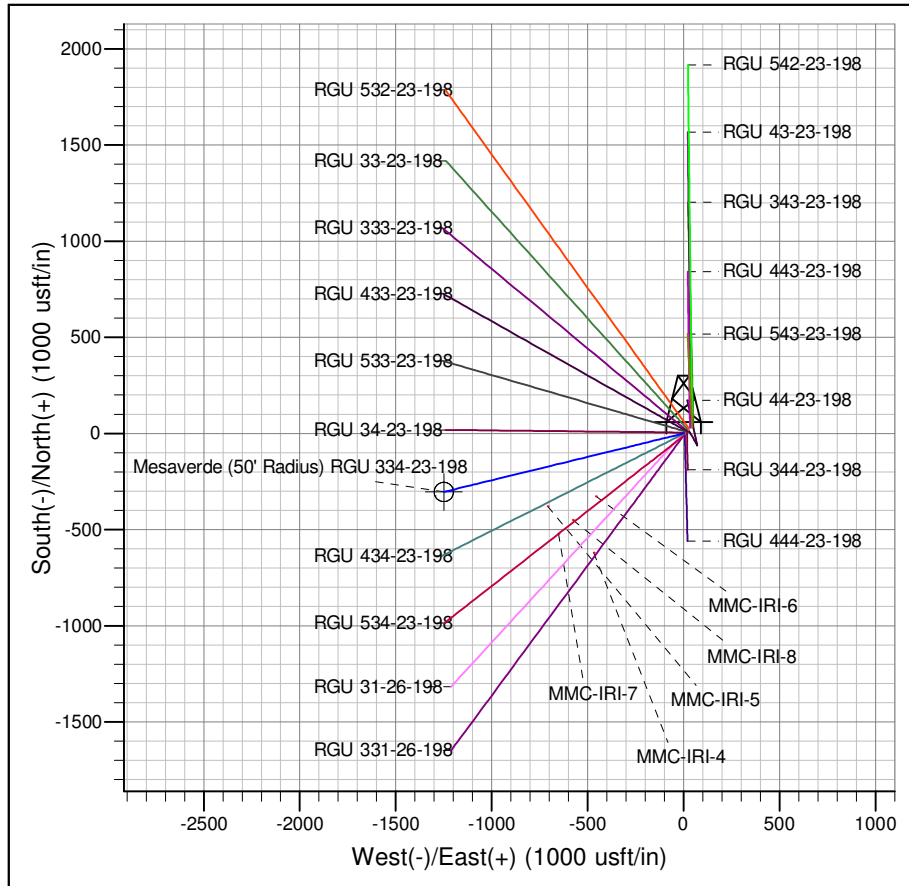




Well Name: RGU 334-23-198
Surface Location: RGU 43-23-198 Pad
North American Datum 1983 , US State Plane 1983 , Colorado Central Zone
Ground Elevation: 6567.0
+N/-S +E/-W Northing Easting Latitude Longitude Slot
0.0 0.0 1781557.8000 2199945.0000 39.94469 -108.35372 A9
KELLY BUSHING @ 6588.0usft (Cyclone 29 (21' RKB) kjs)



ANNOTATIONS										
TVD	MD	Inc	Azi	+N/-S	+E/-W	V Sect	Departure	Annotation		
120.0	120.0	0.00	0.00	0.0	0.0	0.0	0.0	Start Build 2.00		
369.7	370.0	5.00	256.32	-2.6	-10.6	10.9	10.9	Hold 5.00° Inc, 256.32° Az		
3500.0	3512.3	5.00	256.32	-67.3	-276.7	284.8	284.8	Begin 2.00% Turn		
4070.4	4094.0	16.63	256.32	-93.1	-382.6	393.8	393.8	Hold 256.32° Az		
6519.5	6650.1	16.63	256.32	-266.2	-1093.6	1125.5	1125.5	Begin Drop 1.50%/100		
7613.0	7759.1	0.00	0.00	-304.0	-1248.9	1285.3	1285.3	Vertical		
7713.0	7859.1	0.00	0.00	-304.0	-1248.9	1285.3	1285.3	Mesaverde		
12548.0	12694.1	0.00	0.00	-304.0	-1248.9	1285.3	1285.3	TD at 12694.1		



Project: RG 23-01S-098W
Site: RGU 43-23-198 Pad
Well: RGU 334-23-198
Design #3 18Apr14 mab