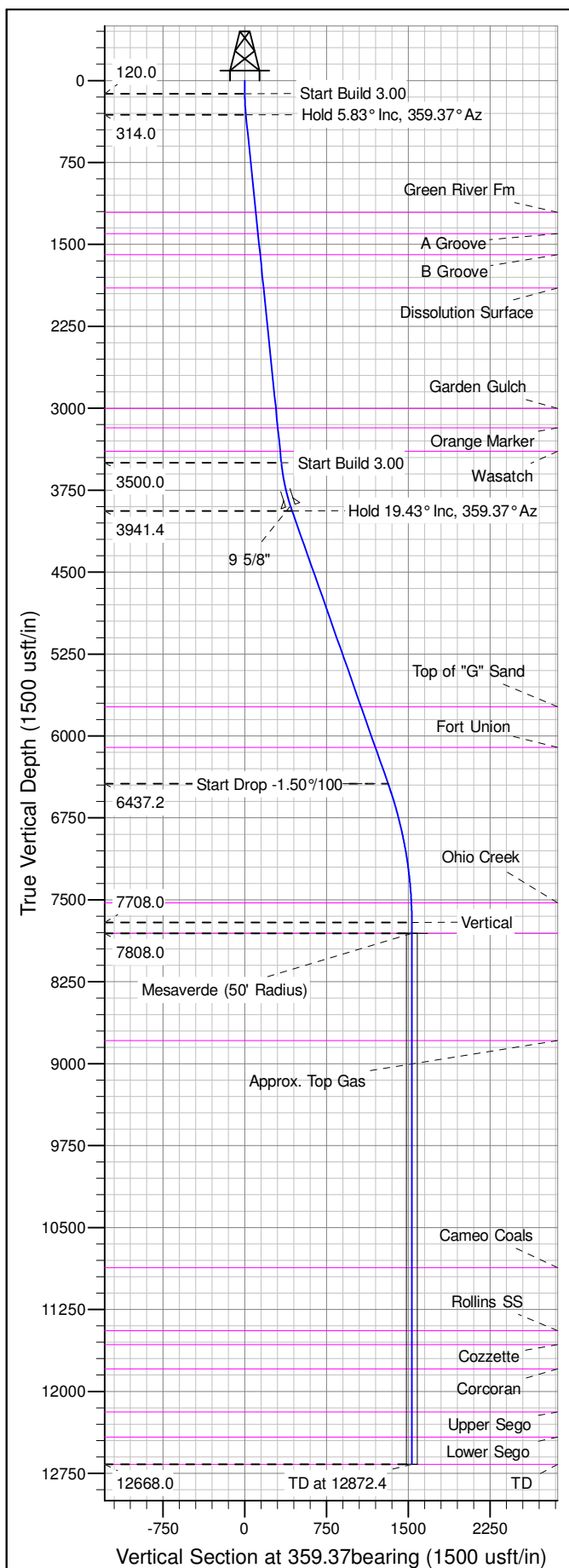
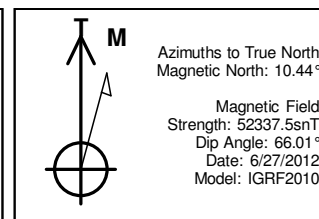
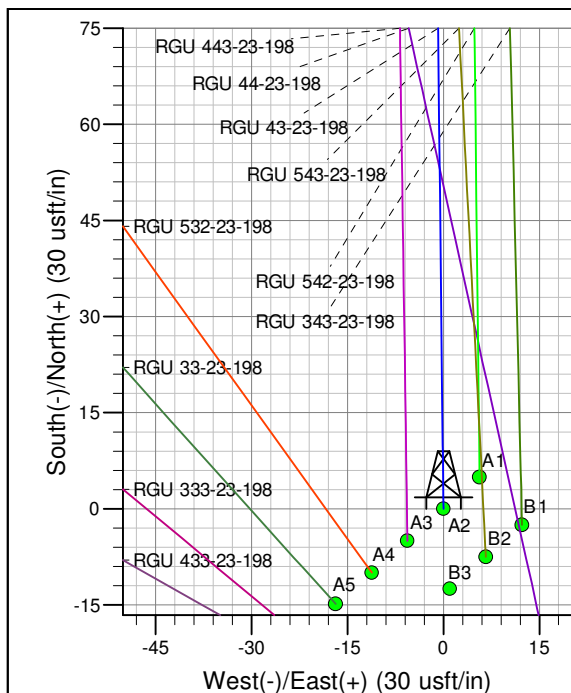
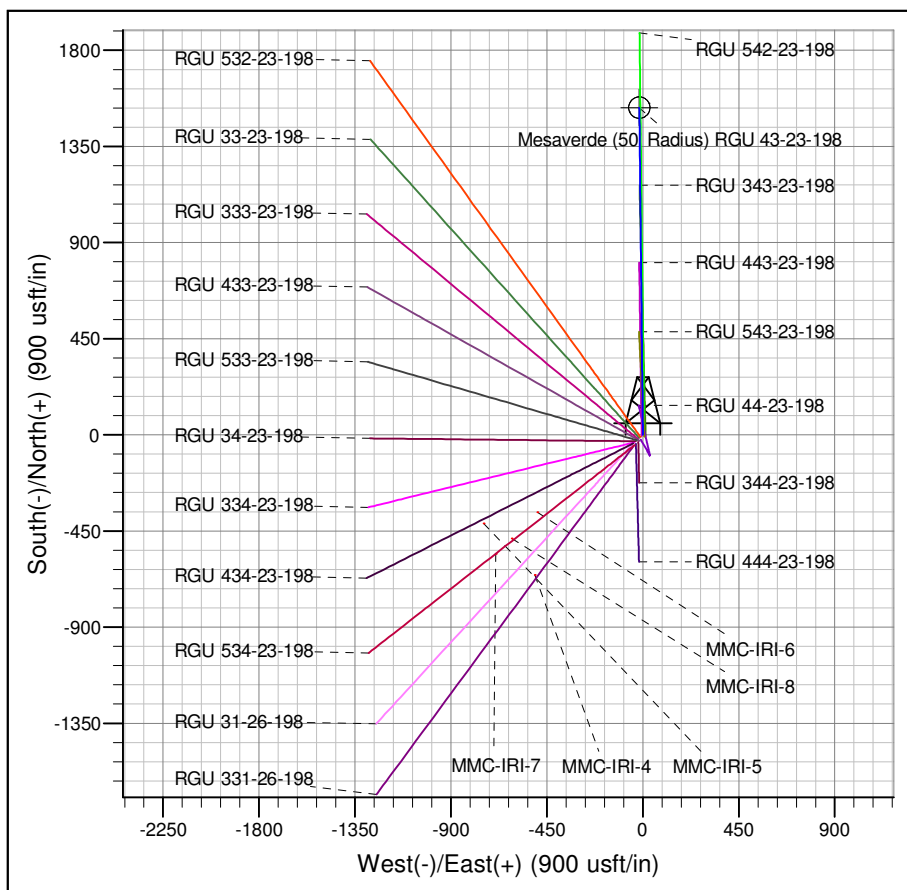




Well Name: RGU 43-23-198  
Surface Location: RGU 43-23-198 Pad  
North American Datum 1983 , US State Plane 1983 , Colorado Central Zone  
Ground Elevation: 6567.0  
+N/-S +E/-W Northing Easting Latitude Longitude Slot  
0.0 0.0 1781591.3000 2199985.4000 39.94479 -108.35358 A2  
KELLY BUSHING @ 6588.0usft (Cyclone 29 (21' RKB) kjs)



ANNOTATIONS									
TVD	MD	Inc	Azi	+N/-S	+E/-W	Vsect	Departure	Annotation	
120.0	120.0	0.00	0.00	0.0	0.0	0.0	0.0	Start Build 3.00	
314.0	314.3	5.83	359.37	9.9	-0.1	9.9	9.9	Hold 5.83° Inc, 359.37° Az	
3500.0	3516.9	5.83	359.37	335.2	-3.7	335.2	335.2	Start Build 3.00	
3941.4	3970.3	19.43	359.37	434.1	-4.8	434.1	434.1	Hold 19.43° Inc, 359.37° Az	
6437.2	6616.9	19.43	359.37	1314.5	-14.5	1314.6	1314.6	Start Drop -1.50°/100	
7708.0	7912.4	0.00	0.00	1532.1	-16.9	1532.2	1532.2	Vertical	
7808.0	8012.4	0.00	0.00	1532.1	-16.9	1532.2	1532.2	Mesaverde	
12668.0	12872.4	0.00	0.00	1532.1	-16.9	1532.2	1532.2	TD at 12872.4	



Project: RG 23-01S-098W  
Site: RGU 43-23-198 Pad  
Well: RGU 43-23-198  
Design #3 17Apr14 mab