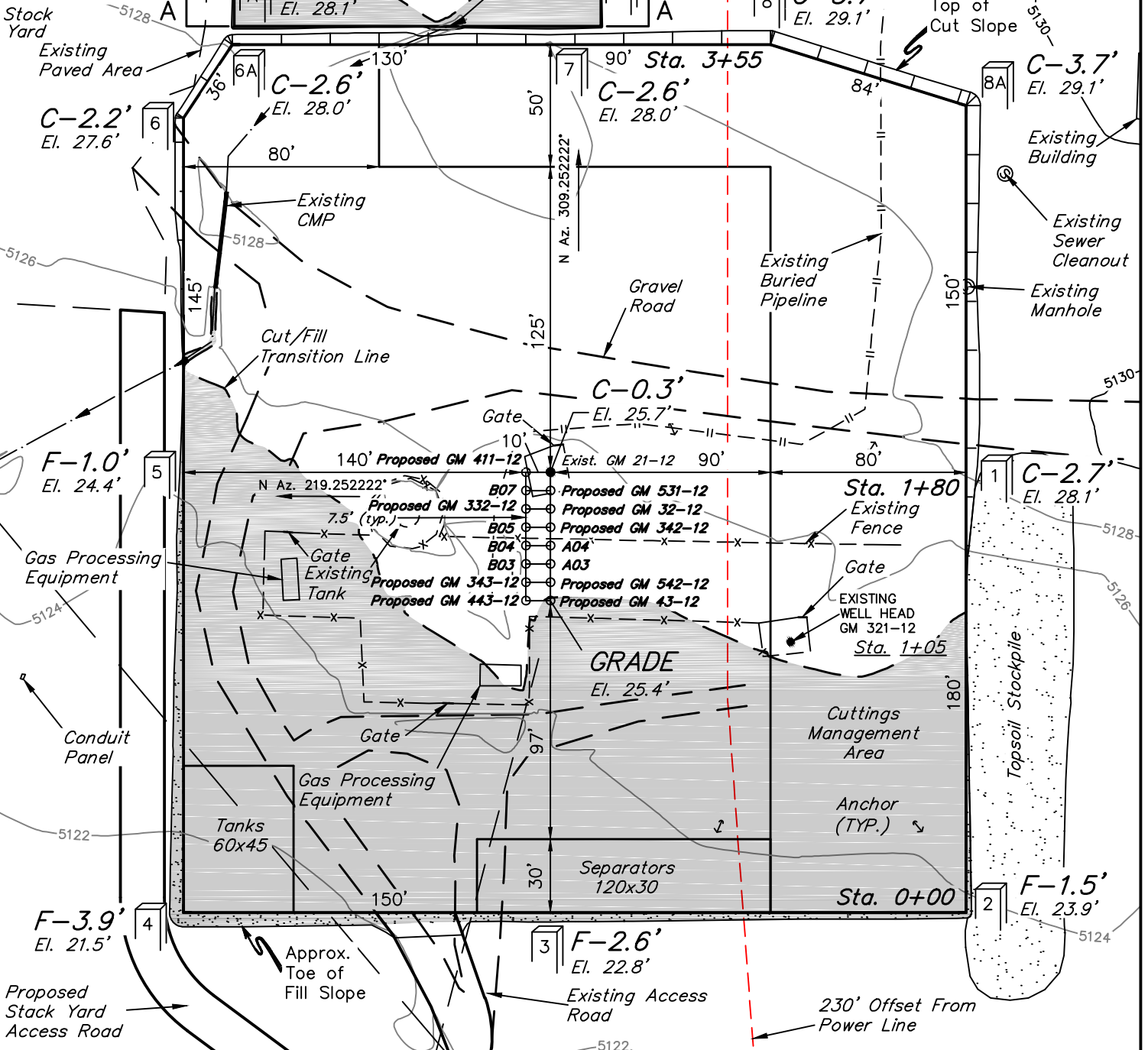


WPX Energy Rocky Mountain, LLC
 PLAT #2_LOCATION LAYOUT FOR GM 21-12
 SECTION 12, T7S, R96W, 6th P.M.



SCALE: 1" = 60'
 DATE: 09-21-12
 DRAWN BY: M.D.
 REV.: 02-13-13
 REV.: 03-13-13
 REV.: 11-18-13
 REV.: 04-25-14
 REV.: 05-05-14



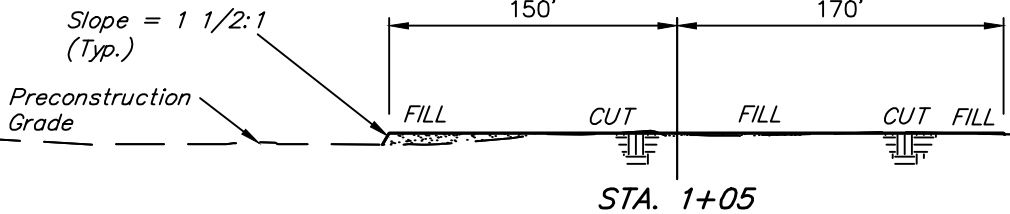
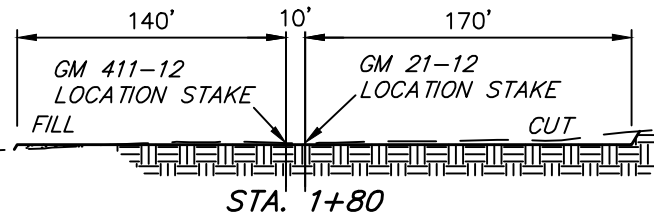
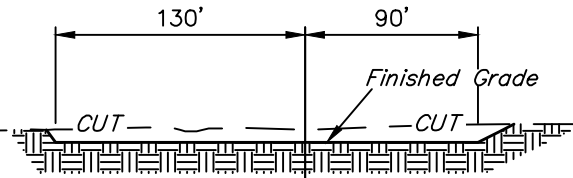
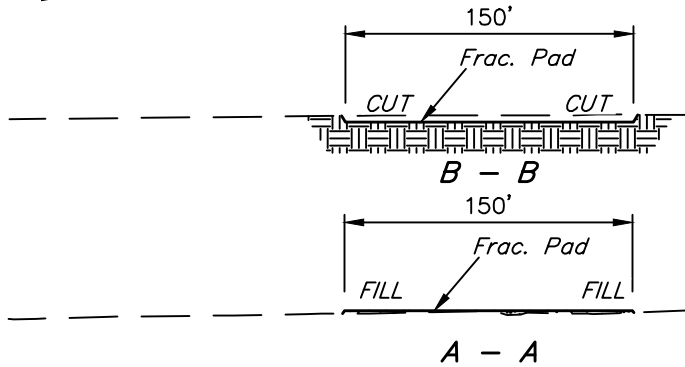
Elev. Ungraded Ground At GM 411-12 Loc. Stake = 5125.7'
 FINISHED GRADE ELEV. AT GM 411-12 LOC. STAKE = 5125.4' UTAH ENGINEERING & LAND SURVEYING
 85 So. 200 East * Vernal, Utah 84078 * (435) 789-1017

WPX Energy Rocky Mountain, LLC

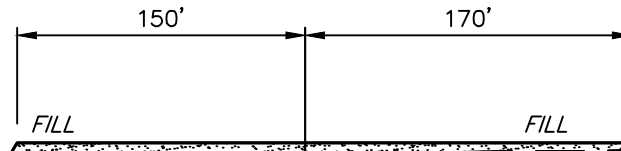
PLAT #3_TYPICAL CROSS SECTIONS FOR GM 21-12 SECTION 12, T7S, R96W, 6th P.M.

DATE: 09-21-12
DRAWN BY: M.D.
REV.: 11-02-12
REV.: 02-13-13
REV.: 11-18-13
REV.: 04-25-14

1" = 40'
X-Section
Scale
1" = 100'



NOTE:
Topsoil should not be Stripped Below Finished Grade on Substructure Area.



STA. 0+00

* NOTE:
FILL QUANTITY INCLUDES 5% FOR COMPACTION

APPROXIMATE ACREAGES

FRAC. PAD DISTURBANCE = ± 0.534 ACRES
WELL SITE DISTURBANCE = ± 2.851 ACRES
TOTAL = ± 3.385 ACRES

WELL PAD APPROXIMATE YARDAGES

(6") Topsoil Stripping = 2,140 Cu. Yds.
Remaining Location = 3,200 Cu. Yds.
TOTAL CUT = 5,340 CU. YDS.
FILL = 3,200 CU. YDS.
EXCESS MATERIAL = 2,140 Cu. Yds.
Topsoil = 2,140 Cu. Yds.
EXCESS UNBALANCE = 0 Cu. Yds.
(After Interim Rehabilitation)

FRAC. PAD APPROXIMATE YARDAGES

(6") Topsoil Stripping = 430 Cu. Yds.
Remaining Location = 190 Cu. Yds.
TOTAL CUT = 620 CU. YDS.
FILL = 190 CU. YDS.
EXCESS MATERIAL = 430 Cu. Yds.
Topsoil = 430 Cu. Yds.
EXCESS UNBALANCE = 0 Cu. Yds.
(After Interim Rehabilitation)

UINTAH ENGINEERING & LAND SURVEYING
85 So. 200 East * Vernal, Utah 84078 * (435) 789-1017