

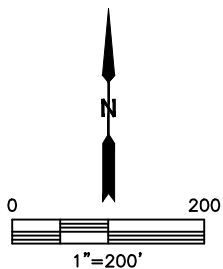
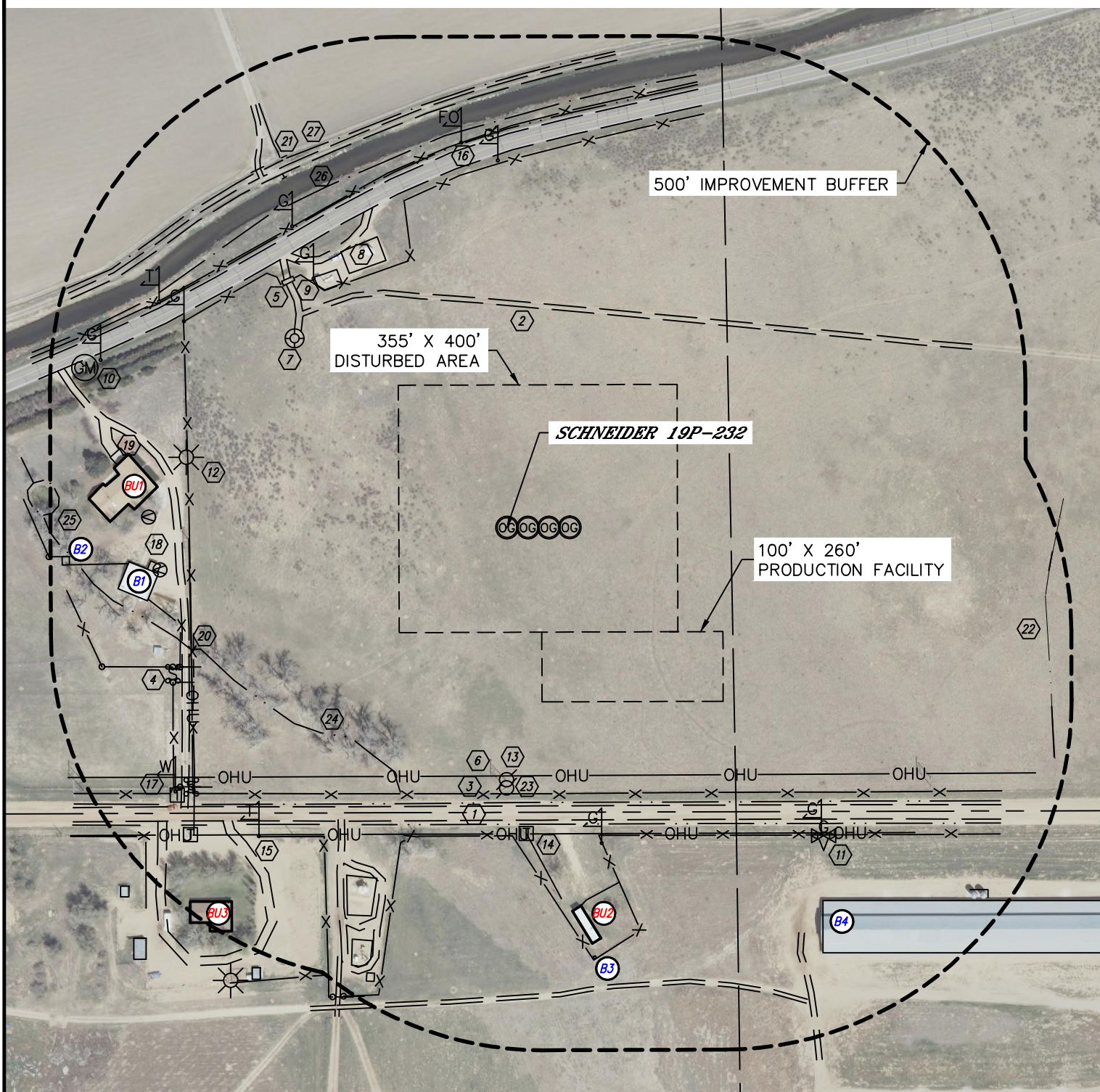


Lat40°, Inc. 1635 Foxtrail Drive, Suite 325 Loveland, CO 970-776-3321

LOCATION DRAWING

SCHNEIDER 19Q-HZ PAD

SECTION: 19
TOWNSHIP: 5N
RANGE: 64W



SHEET 1 OF 2

DATE: 5/8/2014
PROJECT#: 2013130



Lat40°, Inc. 1635 Foxtrail Drive, Suite 325 Loveland, CO 970-776-3321

LOCATION DRAWING

SCHNEIDER 19Q-HZ PAD

SECTION: 19
TOWNSHIP: 5N
RANGE: 64W

IMPROVEMENTS:

(MEASURED FROM THE PROPOSED SCHNEIDER 19P-232 WELL LOCATION)

- BU BUILDING UNIT BU1 505' NW, BU2 553' SE, BU3 664' SW
- B BUILDING B1 500' SW, B2 629' W, B3 627' SE, B4 702' SE
- 1 COUNTY ROAD 54 399' S, COUNTY ROAD 54.5 496' NW
- 2 ACCESS ROAD 318' N, 460', 595' & 614' NW, 467' W, 480' & 577' SW, 671' S, 716' SE
- 3 FENCE 382' & 449' S, 488', 520', 606' & 681' SW, 455' W, 408' & 528' NW
- 4 GATE 510' & 586' SW, 658' W
- 5 CATTLE GUARD 468' NW
- 6 OVERHEAD UTILITY LINE 356' & 439' S, 457' W
- 7 EX. WELL HEAD 408' NW
- 8 EX. PRODUCTION EQUIPMENT (PDC) 422' & 429' NW, (NOBLE) 536', 623' & 667' SW
- 9 GAS MARKER 452', 531', 550' & 631' NW, 472' & 630' SE, 527' N
- 10 GAS METER 648' NW
- 11 GAS VALVE 634' SE
- 12 LIGHT POLE 469' NW
- 13 UTILITY POLE 361' & 374' S
- 14 TELEPHONE PEDESTAL 439' S, 609' & 632' SW
- 15 TELEPHONE MARKER 566' SW, 596' NW
- 16 FIBER OPTIC MARKER 554' N
- 17 WATER MARKER 607' SW
- 18 SPIGOT 501' SW, 514' W
- 19 CONCRETE STRUCTURE 554' & 598' NW, 844' SW
- 20 CULVERT 486' SW, 624' NW
- 21 IRRIGATION PIPE 622' & 624' NW
- 22 CONCRETE DITCH 779' SE
- 23 BARROW DITCH 394' & 426' S, 526' NW
- 24 LOW AREA 378' SW
- 25 POND 644' NW
- 26 CANAL 552' NW
- 27 DITCH 609' & 631' NW

NEAREST CULTURAL ITEMS:

BUILDING B1 500' SW, BUILDING UNIT BU1 505' NW, HIGH OCCUPANCY BUILDING UNIT 5280'+,
DESIGNATED OUTSIDE ACTIVITY AREA 5280'+, PUBLIC ROAD 399' S (CR 54),
ABOVE GROUND UTILITY 356' S, RAILROAD ±1045' NW, PROPERTY LINE 409' S

SHEET 2 OF 2

DATE: 5/8/2014
PROJECT#: 2013130