

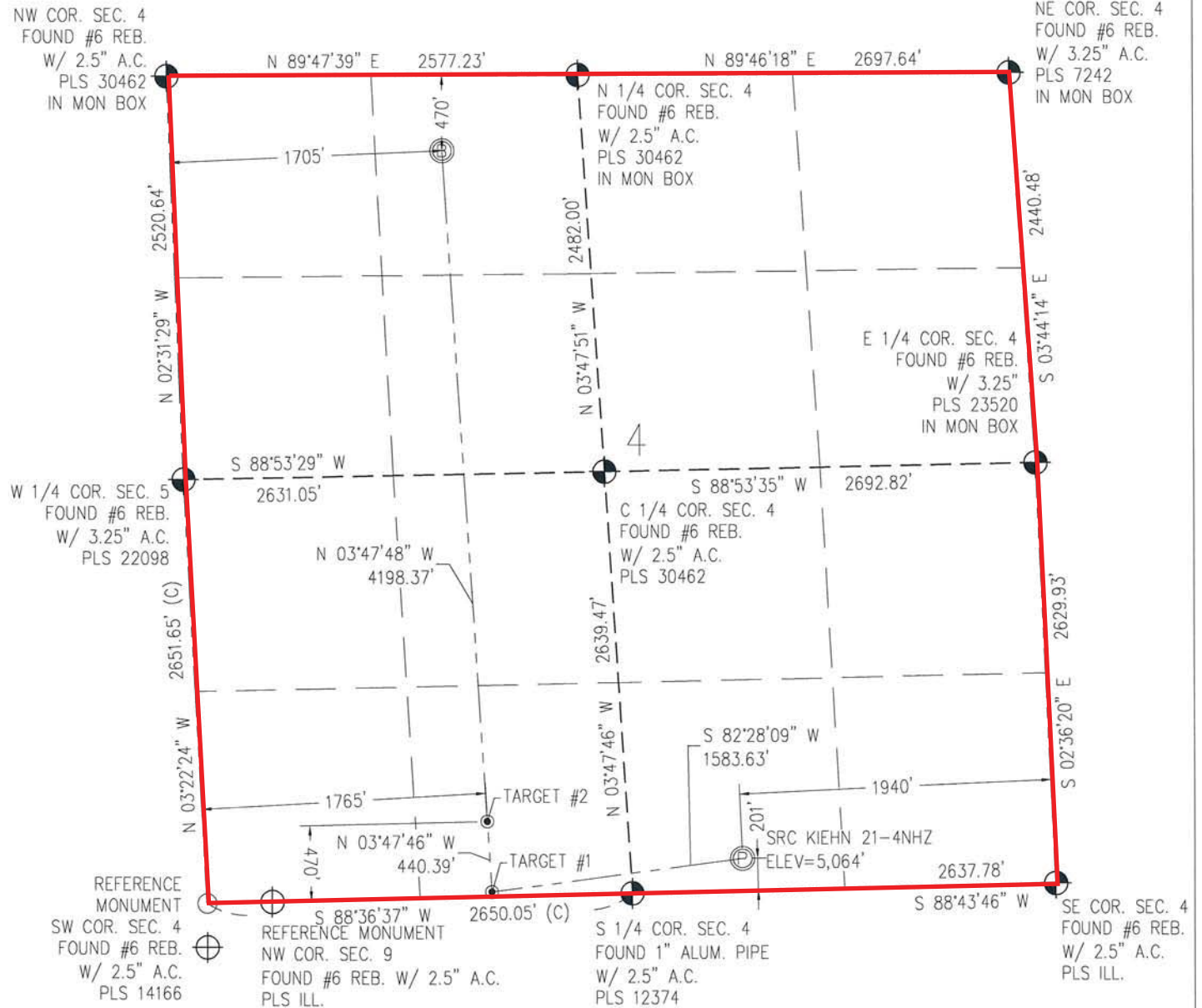
EDITED BY IPT, INC.
04/30/14, RM

Baseline Engineering Corp. 710 11th Avenue Suite 105 Greeley, Colorado 80631

PROPOSED SPACING UNIT

THIS MAP DOES NOT REPRESENT A BOUNDARY SURVEY

SECTION 4
TOWNSHIP 4 NORTH
RANGE 68 WEST



IN ACCORDANCE WITH A REQUEST FROM CRAIG RASMUSON - SYNERGY RESOURCES, BASELINE ENGINEERING CORP. HAS DETERMINED THE LOCATION OF THE SRC KIEHN 21-4NHZ TO BE 201' FSL AND 1940' FEL, AS MEASURED AT NINETY (90) DEGREES FROM THE SECTION LINE OF SECTION 4, TOWNSHIP 4 NORTH, RANGE 68 WEST AND THE BOTTOM HOLE LOCATION TO BE 470' FNL AND 1705' FWL OF SECTION 4, TOWNSHIP 4 NORTH, RANGE 68 WEST, 6TH PRINCIPAL MERIDIAN, WELD COUNTY, COLORADO.

I HEREBY CERTIFY THAT THIS WELL LOCATION CERTIFICATE WAS PREPARED BY ME, OR UNDER MY DIRECT SUPERVISION, THAT THE FIELD WORK WAS COMPLETED ON 12/12/2013, THAT IT IS NOT A LAND SURVEY PLAT OR AN IMPROVEMENT SURVEY PLAT, AND THAT IT IS NOT TO BE RELIED UPON FOR ESTABLISHMENT OF FENCE, BUILDING, OR OTHER FUTURE IMPROVEMENT LINES.

Scale 1" = 1000 ft

NOTES:

- 1) LAT/LONG SHOWN ARE BASED ON A GPS OBSERVATION (NAD83).
- 2) BEARINGS SHOWN ARE GRID BEARINGS OF THE COLORADO STATE PLANE COORDINATE SYSTEM, NORTH ZONE, NORTH AMERICAN DATUM 1983/2007.
- 3) GROUND ELEVATIONS ARE BASED ON A GPS OBSERVATION (NAVD 88 DATUM).
- 4) ALL DISTANCES SHOWN ARE FIELD MEASURED UNLESS OTHERWISE NOTED.
- 5) THE NEAREST EXISTING WELL IS: NONE IN SECTION.
- 6) IMPROVEMENTS: SEE LOCATION DRAWING EXHIBIT FOR ALL VISIBLE IMPROVEMENTS WITHIN 600' OF WELL HEAD.
- 7) SURFACE USE: PASTURE/AGRICULTURAL.
- 8) OPERATOR NAME: BRETT BIRCH.

NOTICE: According to Colorado law you MUST commence any legal action based upon any defect in this W.L.C. within three years after you first discover such defect. In no event may any action based upon any defect in this W.L.C. be commenced more than ten years from this said date of the certification show hereon.

SURFACE HOLE:

LATITUDE: 40.335800° N
LONGITUDE: 105.005864° W
PDOP: 1.2
1/4, 1/4: SW1/4SE1/4
NEAREST PROPERTY LINE: 201' S

BOTTOM HOLE:

LATITUDE: 40.347961° N
LONGITUDE: 105.012508° W

TARGET #1:

LATITUDE: 40.335255° N
LONGITUDE: 105.011498° W

TARGET #2:

LATITUDE: 40.336461° N
LONGITUDE: 105.011594° W

LEGEND

- FOUND/SET SURVEY MONUMENT PER MONUMENT RECORD EXCEPTIONS NOTED.
- CALCULATED SURVEY MONUMENT POSITION
- CALCULATED DIMENSION



AARON A. DEMO
Professional Land Surveyor Registration No. 38285
State of Colorado
FOR AND ON BEHALF OF BASELINE ENGINEERING CORP.

Completed
1/8/2014

PROJECT #: SYN04N68W04-01



05/02/2014

VIA ELECTRONIC TRANSMITTAL

Colorado Oil and Gas Conservation Commission
Attn: Matt Lepore, Director
1120 Lincoln Street, Suite 801
Denver, CO 80203

RE: Rule 318A.e 30-Day Certification Letter

Thirteen (13) well Kiehn Pad: SWSE Section 4 T4N-R68W, Weld County, Colorado

SRC Kiehn 21-4CHZ
SRC Kiehn 21-4NHZ
SRC Kiehn 22-4CHZ
SRC Kiehn 22-4NHZ
SRC Kiehn 31-4CHZ
SRC Kiehn 31-4NHZ
SRC Kiehn 32-4CHZ
SRC Kiehn 32-4NHZ
SRC Kiehn A-4CHZ
SRC Kiehn A-4NHZ
SRC Kiehn C-4CHZ
SRC Kiehn C-4NHZ
SRC Kiehn N-4NHZ

Dear Mr. Lepore,

Synergy Resources Corporation (Synergy) is planning to drill the captioned wells in accordance with the provisions of COGCC Rule 318A.e.

Synergy's proposed wellbore spacing unit consists of All of Sec. 4-T4N-R68W.

Synergy is the only owner within the proposed wellbore spacing unit, therefore Synergy attests that no notice letters are required under COGCC Rule 318A.e.(6). Synergy respectfully requests that the Director approve the wells. Should you have any questions or concerns please contact the undersigned at 720-420-5700.

Sincerely,

Clayton L. Doke
Senior Engineer
Integrated Petroleum Technologies, Inc.
Consultants to Synergy Resources Corporation