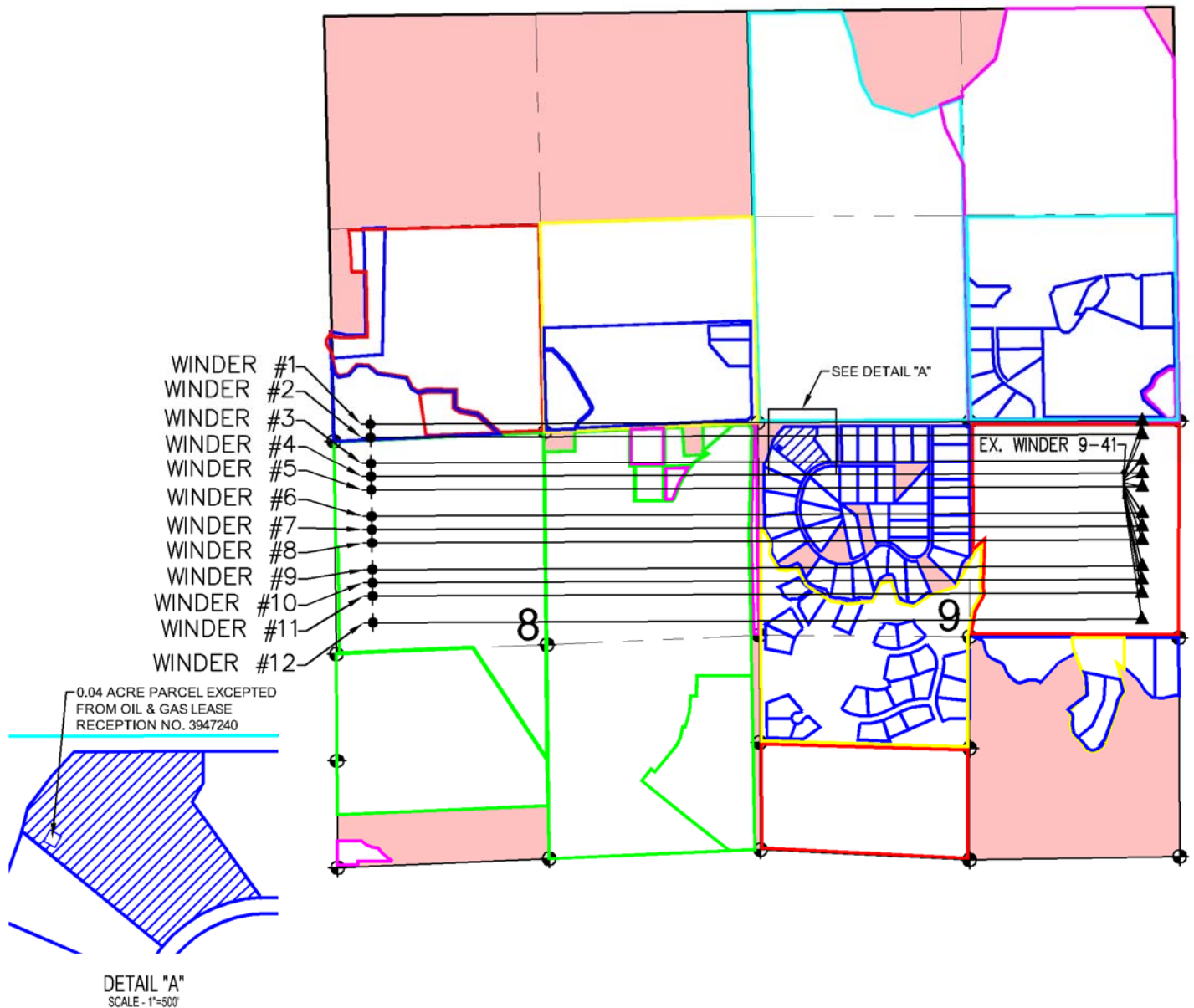


# LEASE DRAWING: WINDER 9-D



## LEGEND

- ⊕ = EXISTING MONUMENT
- = PROPOSED WELL
- ⊙ = BOTTOM HOLE
- ◆ = EXISTING WELL
- = HILL LAND SERVICES, INC.
- = LAND ENERGY, INC.
- = EXTRACTION OIL & GAS, LLC
- = TEKTON WINDSOR, LLC
- = ENERGY & EXPLORATION PARTNERS, LLC
- = NO LEASE DATA

## NOTES:

WINDER #4 TO BE AT 754' FNL, 684' FEL.  
BOTTOM HOLE AT 469' FNL & 460' FWL.  
WINDER #5 TO BE AT 780' FNL, 684' FEL.  
BOTTOM HOLE AT 634' FNL & 460' FWL.  
WINDER #6 TO BE AT 806' FNL, 684' FEL.  
BOTTOM HOLE AT 799' FNL & 460' FWL.  
WINDER #7 TO BE AT 832' FNL, 684' FEL.  
BOTTOM HOLE AT 1129' FNL & 460' FWL.  
WINDER #8 TO BE AT 858' FNL, 684' FEL.  
BOTTOM HOLE AT 1294' FNL & 460' FWL.

WINDER #9 TO BE AT 884' FNL, 684' FEL.  
BOTTOM HOLE AT 1459' FNL & 460' FWL.  
WINDER #10 TO BE AT 910' FNL, 684' FEL.  
BOTTOM HOLE AT 1789' FNL & 460' FWL.  
WINDER #11 TO BE AT 936' FNL, 684' FEL.  
BOTTOM HOLE AT 1954' FNL & 460' FWL.  
WINDER #12 TO BE AT 962' FNL, 684' FEL.  
BOTTOM HOLE AT 2118' FNL & 460' FWL.  
EX. WINDER 9-41 IS 650' FNL, 684' FEL.

PREPARED BY:



BAYSWATER EXPLORATION & PRODUCTION, LLC

FIELD DATE:  
02-19-14

DRAWING DATE:  
03-11-14

BY:  
KAD

PAD NAME:  
WINDER 9-D

SURFACE LOCATION:  
NE 1/4 SE 1/4, SEC. 8, T6N, R67W, 6TH P.M.  
WELD COUNTY, COLORADO

