

# EXTRACTION OIL & GAS

Location: COLORADO Slot: SLOT#06 WINDER #6(806'FNL & 684'FEL,SEC.09)  
Field: WELD COUNTY (NAD83/TRUE NORTH) Well: WINDER #6  
Facility: SEC.09-T06N-R67W Wellbore: WINDER #6 PWB

Plot reference wellpath is WINDER #6 (REV-A.0) PWP

True vertical depths are referenced to RIG (RKB)	Grid System: NAD83 / Lambert Colorado SP, Northern Zone (501), US feet
Measured depths are referenced to RIG (RKB)	North Reference: True north
RIG (RKB) to Mean Sea Level: 4892 feet	Scale: True distance
Mean Sea Level to Mud line (At Slot: SLOT#06 WINDER #6(806'FNL & 684'FEL,SEC.09)): 0 feet	Depths are in feet
Coordinates are in feet referenced to Slot	Created by: painsett on 4/8/2014

## Location Information

Facility Name			Grid East (US ft)	Grid North (US ft)	Latitude	Longitude
SEC.09-T06N-R67W			3169265.228	1428175.850	40°30'25.736"N	104°53'28.612"W
Slot	Local N (ft)	Local E (ft)	Grid East (US ft)	Grid North (US ft)	Latitude	Longitude
SLOT#06 WINDER #6(806FNL & 684FEL,SEC.09)	-130.04	-1.08	3169265.039	1428045.809	40°30'24.451"N	104°53'28.626"W
RIG (RKB) to Mud line (At Slot: SLOT#06 WINDER #6(806FNL & 684FEL,SEC.09))					4892ft	
Mean Sea Level to Mud line (At Slot: SLOT#06 WINDER #6(806FNL & 684FEL,SEC.09))					0ft	
RIG (RKB) to Mean Sea Level					4892ft	

## Targets

Name	MD (ft)	TVD (ft)	Local N (ft)	Local E (ft)	Grid East (US ft)	Grid North (US ft)	Latitude	Longitude
TWELL/WINDER 1/2 SECTION 08		56.00	-3204.14	-9583.62	3158703.97	1424776.07	40°29'52.771"N	104°55'32.678"W
TWELL/WINDER 1/2 SECTION 09		56.00	-3204.14	-9583.62	3158703.97	1424776.07	40°29'52.771"N	104°55'32.678"W
TWELL/WINDER SECTION 08		56.00	-3204.14	-9583.62	3158703.97	1424776.07	40°29'52.771"N	104°55'32.678"W
TWELL/WINDER SECTION 09		56.00	-3204.14	-9583.62	3158703.97	1424776.07	40°29'52.771"N	104°55'32.678"W
WINDER #6 BHL ON PLAT REV-1(964'FNL & 460'FWL,SEC.08)	17285.40	7270.00	-324.63	-9356.17	3158911.64	1427656.97	40°30'21.226"N	104°55'29.748"W
WINDER #6 LANDING POINT	7707.84	7270.00	-349.36	221.36	3169488.78	1427687.99	40°30'20.999"N	104°53'25.760"W
WINDER PAD NORTH 1/2 HARDLINES(460' SETBACKS)	7446.00	-3204.14	-9583.62		3158703.97	1424776.07	40°29'52.771"N	104°55'32.678"W

## Survey Program

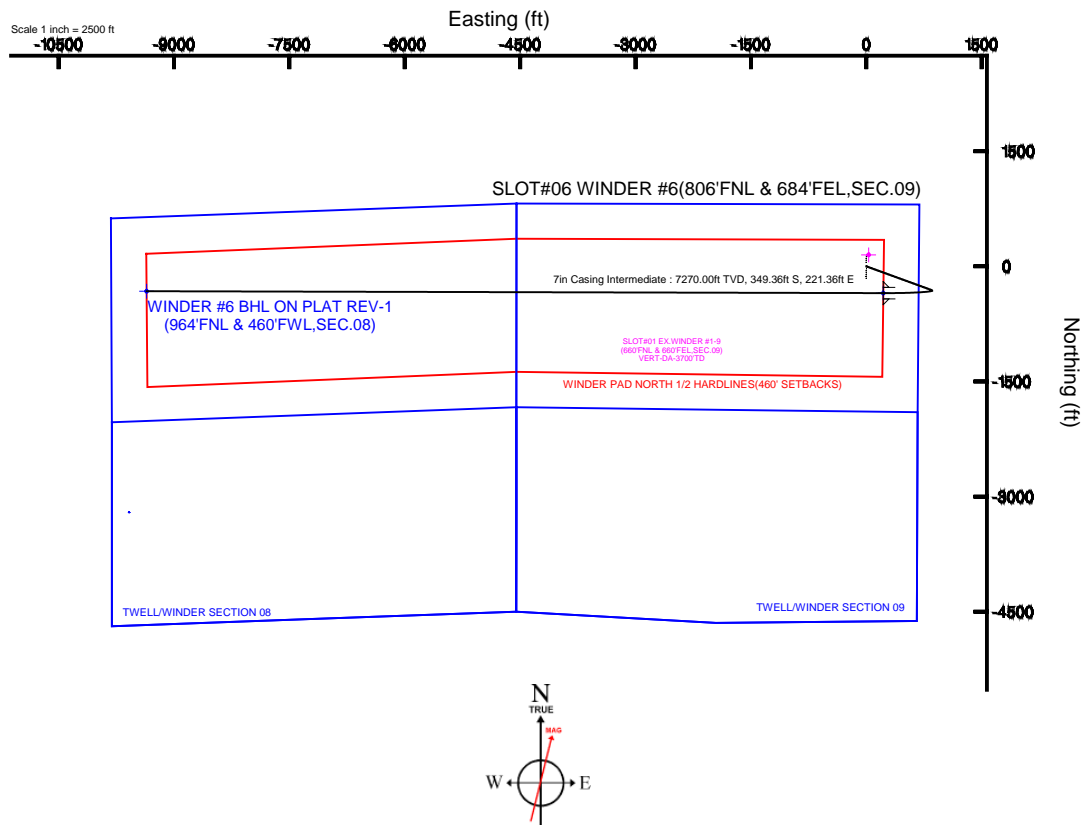
Start MD (ft)	End MD (ft)	Tool	Model	Log Name/Comment	Wellbore
24.00	19000.00	NaviTrak	NaviTrak (Standard)		WINDER #6 PWB

## Well Profile Data

Design Comment	MD (ft)	Inc (°)	Az (°)	TVD (ft)	Local N (ft)	Local E (ft)	DLS (°/100ft)	VS (ft)
Tie On	24.00	0.000	110.024	24.00	0.00	0.00	0.00	0.00
End of Tangent	800.00	0.000	110.024	800.00	0.00	0.00	0.00	0.00
End of Build	1267.10	9.342	110.024	1265.04	-13.01	35.70	2.00	-35.23
End of Tangent	6610.27	9.342	110.024	6537.34	-310.01	850.62	0.00	-839.36
End of 3D Arc	7707.84	90.000	270.148	7270.00	-349.36	221.36	9.00	-209.11
End of Tangent	17285.40	90.000	270.148	7270.00	-324.63	-9356.17	0.00	9361.80

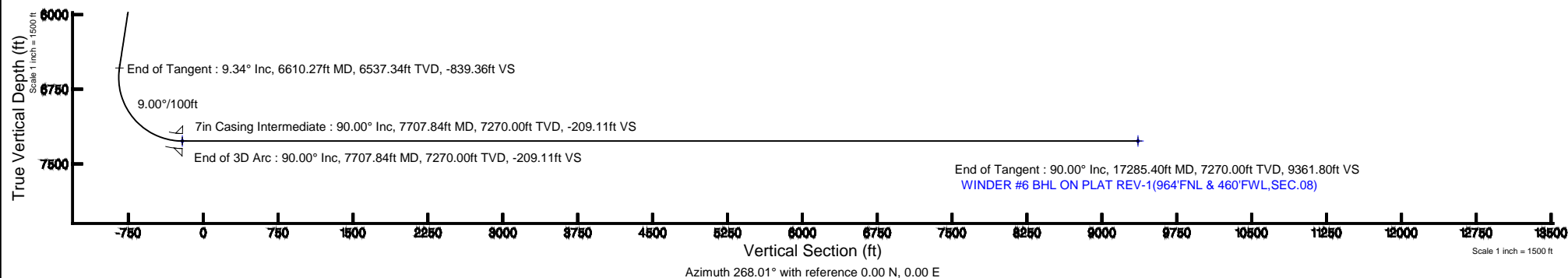
## Wellpath Comments

MD (ft)	X (ft)	Y (ft)	TVD (ft)	Inclination (°)	Azimuth (°)	VS (ft)	Comment
7401.89	515.67	-346.09	7198.00	62.511	268.480	-503.36	NIO A
7606.73	322.04	-349.17	7262.00	80.914	269.635	-309.74	NIO B



BGGM (1945.0 to 2015.0) Dip: 67.01° Field: 52838.7 nT  
Magnetic North is 8.61 degrees East of True North (at 4/7/2014)

To correct azimuth from Magnetic to True add 8.61 degrees





# Planned Wellpath Report

WINDER #6 (REV-A.0) PWP

Page 1 of 9



## REFERENCE WELLPATH IDENTIFICATION

Operator	EXTRACTION OIL & GAS	Slot	SLOT#06 WINDER #6(806'FNL & 684'FEL,SEC.09)
Area	COLORADO	Well	WINDER #6
Field	WELD COUNTY (NAD83/TRUE NORTH)	Wellbore	WINDER #6 PWB
Facility	SEC.09-T06N-R67W		

## REPORT SETUP INFORMATION

Projection System	NAD83 / Lambert Colorado SP, Northern Zone (501), US feet	Software System	WellArchitect® 4.0.0
North Reference	True	User	Painsetr
Scale	0.999967	Report Generated	4/8/2014 at 12:42:11 PM
Convergence at slot	n/a	Database/Source file	WA_Denver/WINDER_#6_PWB.xml

## WELLPATH LOCATION

	Local coordinates		Grid coordinates		Geographic coordinates	
	North[ft]	East[ft]	Easting[US ft]	Northing[US ft]	Latitude	Longitude
Slot Location	-130.04	-1.08	3169265.04	1428045.81	40°30'24.451"N	104°53'28.626"W
Facility Reference Pt			3169265.23	1428175.85	40°30'25.736"N	104°53'28.612"W
Field Reference Pt			3185481.27	1419166.81	40°28'55.560"N	104°49'59.556"W

## WELLPATH DATUM

Calculation method	Minimum curvature	RIG (RKB) to Facility Vertical Datum	4892.00ft
Horizontal Reference Pt	Slot	RIG (RKB) to Mean Sea Level	4892.00ft
Vertical Reference Pt	RIG (RKB)	RIG (RKB) to Mud Line at Slot (SLOT#06 WINDER #6(806'FNL & 684'FEL,SEC.09))	4892.00ft
MD Reference Pt	RIG (RKB)	Section Origin	N 0.00, E 0.00 ft
Field Vertical Reference	Mean Sea Level	Section Azimuth	268.01°



# Planned Wellpath Report

WINDER #6 (REV-A.0) PWP

Page 2 of 9



## REFERENCE WELLPATH IDENTIFICATION

Operator	EXTRACTION OIL & GAS	Slot	SLOT#06 WINDER #6(806'FNL & 684'FEL,SEC.09)
Area	COLORADO	Well	WINDER #6
Field	WELD COUNTY (NAD83/TRUE NORTH)	Wellbore	WINDER #6 PWB
Facility	SEC.09-T06N-R67W		

## WELLPATH DATA (179 stations) † = interpolated/extrapolated station

MD [ft]	Inclination [°]	Azimuth [°]	TVD [ft]	Vert Sect [ft]	North [ft]	East [ft]	DLS [°/100ft]	Comments
0.00†	0.000	110.024	0.00	0.00	0.00	0.00	0.00	
24.00	0.000	110.024	24.00	0.00	0.00	0.00	0.00	Tie On
124.00†	0.000	110.024	124.00	0.00	0.00	0.00	0.00	
224.00†	0.000	110.024	224.00	0.00	0.00	0.00	0.00	
324.00†	0.000	110.024	324.00	0.00	0.00	0.00	0.00	
424.00†	0.000	110.024	424.00	0.00	0.00	0.00	0.00	
524.00†	0.000	110.024	524.00	0.00	0.00	0.00	0.00	
624.00†	0.000	110.024	624.00	0.00	0.00	0.00	0.00	
724.00†	0.000	110.024	724.00	0.00	0.00	0.00	0.00	
800.00	0.000	110.024	800.00	0.00	0.00	0.00	0.00	End of Tangent
824.00†	0.480	110.024	824.00	-0.09	-0.03	0.09	2.00	
924.00†	2.480	110.024	923.96	-2.49	-0.92	2.52	2.00	
1024.00†	4.480	110.024	1023.77	-8.11	-3.00	8.22	2.00	
1124.00†	6.480	110.024	1123.31	-16.97	-6.27	17.20	2.00	
1224.00†	8.480	110.024	1222.45	-29.04	-10.72	29.43	2.00	
1267.10	9.342	110.024	1265.04	-35.23	-13.01	35.70	2.00	End of Build
1324.00†	9.342	110.024	1321.18	-43.79	-16.17	44.38	0.00	
1424.00†	9.342	110.024	1419.85	-58.84	-21.73	59.63	0.00	
1524.00†	9.342	110.024	1518.53	-73.89	-27.29	74.88	0.00	
1624.00†	9.342	110.024	1617.20	-88.94	-32.85	90.13	0.00	
1724.00†	9.342	110.024	1715.87	-103.99	-38.41	105.38	0.00	
1824.00†	9.342	110.024	1814.55	-119.04	-43.97	120.63	0.00	
1924.00†	9.342	110.024	1913.22	-134.09	-49.52	135.89	0.00	
2024.00†	9.342	110.024	2011.89	-149.14	-55.08	151.14	0.00	
2124.00†	9.342	110.024	2110.57	-164.19	-60.64	166.39	0.00	
2224.00†	9.342	110.024	2209.24	-179.24	-66.20	181.64	0.00	
2324.00†	9.342	110.024	2307.92	-194.29	-71.76	196.89	0.00	
2424.00†	9.342	110.024	2406.59	-209.34	-77.32	212.14	0.00	
2524.00†	9.342	110.024	2505.26	-224.39	-82.87	227.40	0.00	
2624.00†	9.342	110.024	2603.94	-239.44	-88.43	242.65	0.00	



# Planned Wellpath Report

WINDER #6 (REV-A.0) PWP

Page 3 of 9



## REFERENCE WELLPATH IDENTIFICATION

Operator	EXTRACTION OIL & GAS	Slot	SLOT#06 WINDER #6(806'FNL & 684'FEL,SEC.09)
Area	COLORADO	Well	WINDER #6
Field	WELD COUNTY (NAD83/TRUE NORTH)	Wellbore	WINDER #6 PWB
Facility	SEC.09-T06N-R67W		

## WELLPATH DATA (179 stations) † = interpolated/extrapolated station

MD [ft]	Inclination [°]	Azimuth [°]	TVD [ft]	Vert Sect [ft]	North [ft]	East [ft]	DLS [°/100ft]	Comments
2724.00†	9.342	110.024	2702.61	-254.48	-93.99	257.90	0.00	
2824.00†	9.342	110.024	2801.28	-269.53	-99.55	273.15	0.00	
2924.00†	9.342	110.024	2899.96	-284.58	-105.11	288.40	0.00	
3024.00†	9.342	110.024	2998.63	-299.63	-110.67	303.65	0.00	
3124.00†	9.342	110.024	3097.30	-314.68	-116.22	318.91	0.00	
3224.00†	9.342	110.024	3195.98	-329.73	-121.78	334.16	0.00	
3324.00†	9.342	110.024	3294.65	-344.78	-127.34	349.41	0.00	
3424.00†	9.342	110.024	3393.33	-359.83	-132.90	364.66	0.00	
3524.00†	9.342	110.024	3492.00	-374.88	-138.46	379.91	0.00	
3624.00†	9.342	110.024	3590.67	-389.93	-144.02	395.16	0.00	
3724.00†	9.342	110.024	3689.35	-404.98	-149.57	410.41	0.00	
3824.00†	9.342	110.024	3788.02	-420.03	-155.13	425.67	0.00	
3924.00†	9.342	110.024	3886.69	-435.08	-160.69	440.92	0.00	
4024.00†	9.342	110.024	3985.37	-450.13	-166.25	456.17	0.00	
4124.00†	9.342	110.024	4084.04	-465.18	-171.81	471.42	0.00	
4224.00†	9.342	110.024	4182.71	-480.23	-177.37	486.67	0.00	
4324.00†	9.342	110.024	4281.39	-495.28	-182.93	501.92	0.00	
4424.00†	9.342	110.024	4380.06	-510.33	-188.48	517.18	0.00	
4524.00†	9.342	110.024	4478.74	-525.38	-194.04	532.43	0.00	
4624.00†	9.342	110.024	4577.41	-540.43	-199.60	547.68	0.00	
4724.00†	9.342	110.024	4676.08	-555.48	-205.16	562.93	0.00	
4824.00†	9.342	110.024	4774.76	-570.53	-210.72	578.18	0.00	
4924.00†	9.342	110.024	4873.43	-585.58	-216.28	593.43	0.00	
5024.00†	9.342	110.024	4972.10	-600.63	-221.83	608.69	0.00	
5124.00†	9.342	110.024	5070.78	-615.68	-227.39	623.94	0.00	
5224.00†	9.342	110.024	5169.45	-630.73	-232.95	639.19	0.00	
5324.00†	9.342	110.024	5268.13	-645.78	-238.51	654.44	0.00	
5424.00†	9.342	110.024	5366.80	-660.83	-244.07	669.69	0.00	
5524.00†	9.342	110.024	5465.47	-675.88	-249.63	684.94	0.00	
5624.00†	9.342	110.024	5564.15	-690.93	-255.18	700.20	0.00	



# Planned Wellpath Report

WINDER #6 (REV-A.0) PWP

Page 4 of 9



## REFERENCE WELLPATH IDENTIFICATION

Operator	EXTRACTION OIL & GAS	Slot	SLOT#06 WINDER #6(806'FNL & 684'FEL,SEC.09)
Area	COLORADO	Well	WINDER #6
Field	WELD COUNTY (NAD83/TRUE NORTH)	Wellbore	WINDER #6 PWB
Facility	SEC.09-T06N-R67W		

## WELLPATH DATA (179 stations) † = interpolated/extrapolated station

MD [ft]	Inclination [°]	Azimuth [°]	TVD [ft]	Vert Sect [ft]	North [ft]	East [ft]	DLS [°/100ft]	Comments
5724.00†	9.342	110.024	5662.82	-705.97	-260.74	715.45	0.00	
5824.00†	9.342	110.024	5761.49	-721.02	-266.30	730.70	0.00	
5924.00†	9.342	110.024	5860.17	-736.07	-271.86	745.95	0.00	
6024.00†	9.342	110.024	5958.84	-751.12	-277.42	761.20	0.00	
6124.00†	9.342	110.024	6057.51	-766.17	-282.98	776.45	0.00	
6224.00†	9.342	110.024	6156.19	-781.22	-288.54	791.70	0.00	
6324.00†	9.342	110.024	6254.86	-796.27	-294.09	806.96	0.00	
6424.00†	9.342	110.024	6353.54	-811.32	-299.65	822.21	0.00	
6524.00†	9.342	110.024	6452.21	-826.37	-305.21	837.46	0.00	
6610.27	9.342	110.024	6537.34	-839.36	-310.01	850.62	0.00	End of Tangent
6624.00†	8.193	113.007	6550.90	-841.28	-310.77	852.56	9.00	
6724.00†	3.516	204.594	6650.50	-846.37	-316.35	857.86	9.00	
6824.00†	10.928	253.309	6749.71	-835.81	-321.88	847.48	9.00	
6924.00†	19.706	261.164	6846.07	-809.85	-327.20	821.69	9.00	
7024.00†	28.619	264.264	6937.22	-769.13	-332.19	781.12	9.00	
7124.00†	37.571	265.979	7020.92	-714.65	-336.73	726.76	9.00	
7224.00†	46.539	267.110	7095.09	-647.76	-340.71	659.97	9.00	
7324.00†	55.516	267.946	7157.92	-570.10	-344.02	582.38	9.00	
7424.00†	64.497	268.619	7207.86	-483.58	-346.59	495.89	9.00	
7524.00†	73.481	269.197	7243.68	-390.33	-348.36	402.66	9.00	
7624.00†	82.466	269.724	7264.50	-292.66	-349.27	304.96	9.00	
7707.84	90.000	270.148	7270.00 <sup>1</sup>	-209.11	-349.36	221.36	9.00	End of 3D Arc
7724.00†	90.000	270.148	7270.00	-192.96	-349.32	205.20	0.00	
7824.00†	90.000	270.148	7270.00	-93.03	-349.06	105.20	0.00	
7924.00†	90.000	270.148	7270.00	6.90	-348.80	5.20	0.00	
8024.00†	90.000	270.148	7270.00	106.83	-348.54	-94.80	0.00	
8124.00†	90.000	270.148	7270.00	206.76	-348.29	-194.80	0.00	
8224.00†	90.000	270.148	7270.00	306.69	-348.03	-294.80	0.00	
8324.00†	90.000	270.148	7270.00	406.62	-347.77	-394.80	0.00	
8424.00†	90.000	270.148	7270.00	506.55	-347.51	-494.80	0.00	



# Planned Wellpath Report

WINDER #6 (REV-A.0) PWP

Page 5 of 9



## REFERENCE WELLPATH IDENTIFICATION

Operator	EXTRACTION OIL & GAS	Slot	SLOT#06 WINDER #6(806'FNL & 684'FEL,SEC.09)
Area	COLORADO	Well	WINDER #6
Field	WELD COUNTY (NAD83/TRUE NORTH)	Wellbore	WINDER #6 PWB
Facility	SEC.09-T06N-R67W		

## WELLPATH DATA (179 stations) † = interpolated/extrapolated station

MD [ft]	Inclination [°]	Azimuth [°]	TVD [ft]	Vert Sect [ft]	North [ft]	East [ft]	DLS [°/100ft]	Comments
8524.00†	90.000	270.148	7270.00	606.48	-347.25	-594.80	0.00	
8624.00†	90.000	270.148	7270.00	706.41	-347.00	-694.80	0.00	
8724.00†	90.000	270.148	7270.00	806.34	-346.74	-794.80	0.00	
8824.00†	90.000	270.148	7270.00	906.28	-346.48	-894.80	0.00	
8924.00†	90.000	270.148	7270.00	1006.21	-346.22	-994.80	0.00	
9024.00†	90.000	270.148	7270.00	1106.14	-345.96	-1094.80	0.00	
9124.00†	90.000	270.148	7270.00	1206.07	-345.70	-1194.80	0.00	
9224.00†	90.000	270.148	7270.00	1306.00	-345.45	-1294.80	0.00	
9324.00†	90.000	270.148	7270.00	1405.93	-345.19	-1394.80	0.00	
9424.00†	90.000	270.148	7270.00	1505.86	-344.93	-1494.80	0.00	
9524.00†	90.000	270.148	7270.00	1605.79	-344.67	-1594.80	0.00	
9624.00†	90.000	270.148	7270.00	1705.72	-344.41	-1694.80	0.00	
9724.00†	90.000	270.148	7270.00	1805.65	-344.16	-1794.80	0.00	
9824.00†	90.000	270.148	7270.00	1905.58	-343.90	-1894.80	0.00	
9924.00†	90.000	270.148	7270.00	2005.51	-343.64	-1994.79	0.00	
10024.00†	90.000	270.148	7270.00	2105.44	-343.38	-2094.79	0.00	
10124.00†	90.000	270.148	7270.00	2205.37	-343.12	-2194.79	0.00	
10224.00†	90.000	270.148	7270.00	2305.30	-342.86	-2294.79	0.00	
10324.00†	90.000	270.148	7270.00	2405.23	-342.61	-2394.79	0.00	
10424.00†	90.000	270.148	7270.00	2505.16	-342.35	-2494.79	0.00	
10524.00†	90.000	270.148	7270.00	2605.09	-342.09	-2594.79	0.00	
10624.00†	90.000	270.148	7270.00	2705.03	-341.83	-2694.79	0.00	
10724.00†	90.000	270.148	7270.00	2804.96	-341.57	-2794.79	0.00	
10824.00†	90.000	270.148	7270.00	2904.89	-341.32	-2894.79	0.00	
10924.00†	90.000	270.148	7270.00	3004.82	-341.06	-2994.79	0.00	
11024.00†	90.000	270.148	7270.00	3104.75	-340.80	-3094.79	0.00	
11124.00†	90.000	270.148	7270.00	3204.68	-340.54	-3194.79	0.00	
11224.00†	90.000	270.148	7270.00	3304.61	-340.28	-3294.79	0.00	
11324.00†	90.000	270.148	7270.00	3404.54	-340.02	-3394.79	0.00	
11424.00†	90.000	270.148	7270.00	3504.47	-339.77	-3494.79	0.00	



# Planned Wellpath Report

WINDER #6 (REV-A.0) PWP

Page 6 of 9



## REFERENCE WELLPATH IDENTIFICATION

Operator	EXTRACTION OIL & GAS	Slot	SLOT#06 WINDER #6(806'FNL & 684'FEL,SEC.09)
Area	COLORADO	Well	WINDER #6
Field	WELD COUNTY (NAD83/TRUE NORTH)	Wellbore	WINDER #6 PWB
Facility	SEC.09-T06N-R67W		

## WELLPATH DATA (179 stations) † = interpolated/extrapolated station

MD [ft]	Inclination [°]	Azimuth [°]	TVD [ft]	Vert Sect [ft]	North [ft]	East [ft]	DLS [°/100ft]	Comments
11524.00†	90.000	270.148	7270.00	3604.40	-339.51	-3594.79	0.00	
11624.00†	90.000	270.148	7270.00	3704.33	-339.25	-3694.79	0.00	
11724.00†	90.000	270.148	7270.00	3804.26	-338.99	-3794.79	0.00	
11824.00†	90.000	270.148	7270.00	3904.19	-338.73	-3894.79	0.00	
11924.00†	90.000	270.148	7270.00	4004.12	-338.48	-3994.79	0.00	
12024.00†	90.000	270.148	7270.00	4104.05	-338.22	-4094.79	0.00	
12124.00†	90.000	270.148	7270.00	4203.98	-337.96	-4194.79	0.00	
12224.00†	90.000	270.148	7270.00	4303.91	-337.70	-4294.79	0.00	
12324.00†	90.000	270.148	7270.00	4403.85	-337.44	-4394.79	0.00	
12424.00†	90.000	270.148	7270.00	4503.78	-337.18	-4494.79	0.00	
12524.00†	90.000	270.148	7270.00	4603.71	-336.93	-4594.79	0.00	
12624.00†	90.000	270.148	7270.00	4703.64	-336.67	-4694.79	0.00	
12724.00†	90.000	270.148	7270.00	4803.57	-336.41	-4794.79	0.00	
12824.00†	90.000	270.148	7270.00	4903.50	-336.15	-4894.79	0.00	
12924.00†	90.000	270.148	7270.00	5003.43	-335.89	-4994.78	0.00	
13024.00†	90.000	270.148	7270.00	5103.36	-335.64	-5094.78	0.00	
13124.00†	90.000	270.148	7270.00	5203.29	-335.38	-5194.78	0.00	
13224.00†	90.000	270.148	7270.00	5303.22	-335.12	-5294.78	0.00	
13324.00†	90.000	270.148	7270.00	5403.15	-334.86	-5394.78	0.00	
13424.00†	90.000	270.148	7270.00	5503.08	-334.60	-5494.78	0.00	
13524.00†	90.000	270.148	7270.00	5603.01	-334.35	-5594.78	0.00	
13624.00†	90.000	270.148	7270.00	5702.94	-334.09	-5694.78	0.00	
13724.00†	90.000	270.148	7270.00	5802.87	-333.83	-5794.78	0.00	
13824.00†	90.000	270.148	7270.00	5902.80	-333.57	-5894.78	0.00	
13924.00†	90.000	270.148	7270.00	6002.73	-333.31	-5994.78	0.00	
14024.00†	90.000	270.148	7270.00	6102.66	-333.05	-6094.78	0.00	
14124.00†	90.000	270.148	7270.00	6202.60	-332.80	-6194.78	0.00	
14224.00†	90.000	270.148	7270.00	6302.53	-332.54	-6294.78	0.00	
14324.00†	90.000	270.148	7270.00	6402.46	-332.28	-6394.78	0.00	
14424.00†	90.000	270.148	7270.00	6502.39	-332.02	-6494.78	0.00	



# Planned Wellpath Report

WINDER #6 (REV-A.0) PWP

Page 7 of 9



## REFERENCE WELLPATH IDENTIFICATION

Operator	EXTRACTION OIL & GAS	Slot	SLOT#06 WINDER #6(806'FNL & 684'FEL,SEC.09)
Area	COLORADO	Well	WINDER #6
Field	WELD COUNTY (NAD83/TRUE NORTH)	Wellbore	WINDER #6 PWB
Facility	SEC.09-T06N-R67W		

## WELLPATH DATA (179 stations) † = interpolated/extrapolated station

MD [ft]	Inclination [°]	Azimuth [°]	TVD [ft]	Vert Sect [ft]	North [ft]	East [ft]	DLS [°/100ft]	Comments
14524.00†	90.000	270.148	7270.00	6602.32	-331.76	-6594.78	0.00	
14624.00†	90.000	270.148	7270.00	6702.25	-331.51	-6694.78	0.00	
14724.00†	90.000	270.148	7270.00	6802.18	-331.25	-6794.78	0.00	
14824.00†	90.000	270.148	7270.00	6902.11	-330.99	-6894.78	0.00	
14924.00†	90.000	270.148	7270.00	7002.04	-330.73	-6994.78	0.00	
15024.00†	90.000	270.148	7270.00	7101.97	-330.47	-7094.78	0.00	
15124.00†	90.000	270.148	7270.00	7201.90	-330.21	-7194.78	0.00	
15224.00†	90.000	270.148	7270.00	7301.83	-329.96	-7294.78	0.00	
15324.00†	90.000	270.148	7270.00	7401.76	-329.70	-7394.78	0.00	
15424.00†	90.000	270.148	7270.00	7501.69	-329.44	-7494.78	0.00	
15524.00†	90.000	270.148	7270.00	7601.62	-329.18	-7594.78	0.00	
15624.00†	90.000	270.148	7270.00	7701.55	-328.92	-7694.78	0.00	
15724.00†	90.000	270.148	7270.00	7801.48	-328.67	-7794.78	0.00	
15824.00†	90.000	270.148	7270.00	7901.42	-328.41	-7894.78	0.00	
15924.00†	90.000	270.148	7270.00	8001.35	-328.15	-7994.77	0.00	
16024.00†	90.000	270.148	7270.00	8101.28	-327.89	-8094.77	0.00	
16124.00†	90.000	270.148	7270.00	8201.21	-327.63	-8194.77	0.00	
16224.00†	90.000	270.148	7270.00	8301.14	-327.37	-8294.77	0.00	
16324.00†	90.000	270.148	7270.00	8401.07	-327.12	-8394.77	0.00	
16424.00†	90.000	270.148	7270.00	8501.00	-326.86	-8494.77	0.00	
16524.00†	90.000	270.148	7270.00	8600.93	-326.60	-8594.77	0.00	
16624.00†	90.000	270.148	7270.00	8700.86	-326.34	-8694.77	0.00	
16724.00†	90.000	270.148	7270.00	8800.79	-326.08	-8794.77	0.00	
16824.00†	90.000	270.148	7270.00	8900.72	-325.83	-8894.77	0.00	
16924.00†	90.000	270.148	7270.00	9000.65	-325.57	-8994.77	0.00	
17024.00†	90.000	270.148	7270.00	9100.58	-325.31	-9094.77	0.00	
17124.00†	90.000	270.148	7270.00	9200.51	-325.05	-9194.77	0.00	
17224.00†	90.000	270.148	7270.00	9300.44	-324.79	-9294.77	0.00	
17285.40	90.000	270.148	7270.00 <sup>2</sup>	9361.80	-324.63	-9356.17	0.00	End of Tangent



# Planned Wellpath Report

WINDER #6 (REV-A.0) PWP

Page 8 of 9



## REFERENCE WELLPATH IDENTIFICATION

Operator	EXTRACTION OIL & GAS	Slot	SLOT#06 WINDER #6(806'FNL & 684'FEL,SEC.09)
Area	COLORADO	Well	WINDER #6
Field	WELD COUNTY (NAD83/TRUE NORTH)	Wellbore	WINDER #6 PWB
Facility	SEC.09-T06N-R67W		

## HOLE & CASING SECTIONS - Ref Wellbore: WINDER #6 PWB Ref Wellpath: WINDER #6 (REV-A.0) PWP

String/Diameter	Start MD [ft]	End MD [ft]	Interval [ft]	Start TVD [ft]	End TVD [ft]	Start N/S [ft]	Start E/W [ft]	End N/S [ft]	End E/W [ft]
7in Casing Intermediate	24.00	7707.84	7683.84	24.00	7270.00	0.00	0.00	-349.36	221.36

## TARGETS

Name	MD [ft]	TVD [ft]	North [ft]	East [ft]	Grid East [US ft]	Grid North [US ft]	Latitude	Longitude	Shape
TWELL/WINDER 1/2 SECTION 08		56.00	-3204.14	-9583.62	3159703.97	1424776.07	40°29'52.771"N	104°55'32.678"W	polygon
TWELL/WINDER 1/2 SECTION 09		56.00	-3204.14	-9583.62	3159703.97	1424776.07	40°29'52.771"N	104°55'32.678"W	polygon
TWELL/WINDER SECTION 08		56.00	-3204.14	-9583.62	3159703.97	1424776.07	40°29'52.771"N	104°55'32.678"W	polygon
TWELL/WINDER SECTION 09		56.00	-3204.14	-9583.62	3159703.97	1424776.07	40°29'52.771"N	104°55'32.678"W	polygon
2) WINDER #6 BHL ON PLAT REV-1(964'FNL & 460'FWL,SEC.08)	17285.40	7270.00	-324.63	-9356.17	3159911.64	1427656.97	40°30'21.226"N	104°55'29.748"W	point
1) WINDER #6 LANDING POINT	7707.84	7270.00	-349.36	221.36	3169488.78	1427697.99	40°30'20.999"N	104°53'25.760"W	point
WINDER PAD NORTH 1/2 HARDLINES(460' SETBACKS)		7446.00	-3204.14	-9583.62	3159703.97	1424776.07	40°29'52.771"N	104°55'32.678"W	polygon

## SURVEY PROGRAM - Ref Wellbore: WINDER #6 PWB Ref Wellpath: WINDER #6 (REV-A.0) PWP

Start MD [ft]	End MD [ft]	Positional Uncertainty Model	Log Name/Comment	Wellbore
24.00	19000.00	NaviTrak (Standard)		WINDER #6 PWB



# Planned Wellpath Report

WINDER #6 (REV-A.0) PWP

Page 9 of 9



## REFERENCE WELLPATH IDENTIFICATION

Operator	EXTRACTION OIL & GAS	Slot	SLOT#06 WINDER #6(806'FNL & 684'FEL,SEC.09)
Area	COLORADO	Well	WINDER #6
Field	WELD COUNTY (NAD83/TRUE NORTH)	Wellbore	WINDER #6 PWB
Facility	SEC.09-T06N-R67W		

## WELLPATH COMMENTS

MD [ft]	Inclination [°]	Azimuth [°]	TVD [ft]	Comment
7401.89	62.511	268.480	7198.00	NIO A
7606.73	80.914	269.635	7262.00	NIO B