

# LEASE DESCRIPTION FOR APD

Well Name: Heartland State C31-79-1HN

## Lease Description:

### Township 5 North, Range 64 West

Section 7:	Lot 1 (W/2 NW/4) (72.10)	72.10
Section 9:	SE/4 SW/4	40.00
Section 15:	SW/4 NE/4, S/2 NW/4	120.00
Section 23:	NW/4, S/2, except R/W	468.14
Section 29:	NW/4, S/2	480.00
Section 31:	NW/4, S/2	480.00
Section 35:	W/2 SW/4, SE/4 SW/4	120.00

### Township 4 North, Range 64 West

Section 7:	Lots 1 and 2 (W/2 W/2) (130.84), E/2 W/2, SE/4	450.84
Section 17:	NW/4, S/2	480.00
Section 19:	Lots 1 and 2 (W/2 W/2) (132.32), E/2 W/2, SE/4	452.32
Section 29:	NW/4, S/2	480.00
Section 31:	Lots 1 and 2 (W/2 W/2) (136.72), E/2 W/2, SE/4	456.72

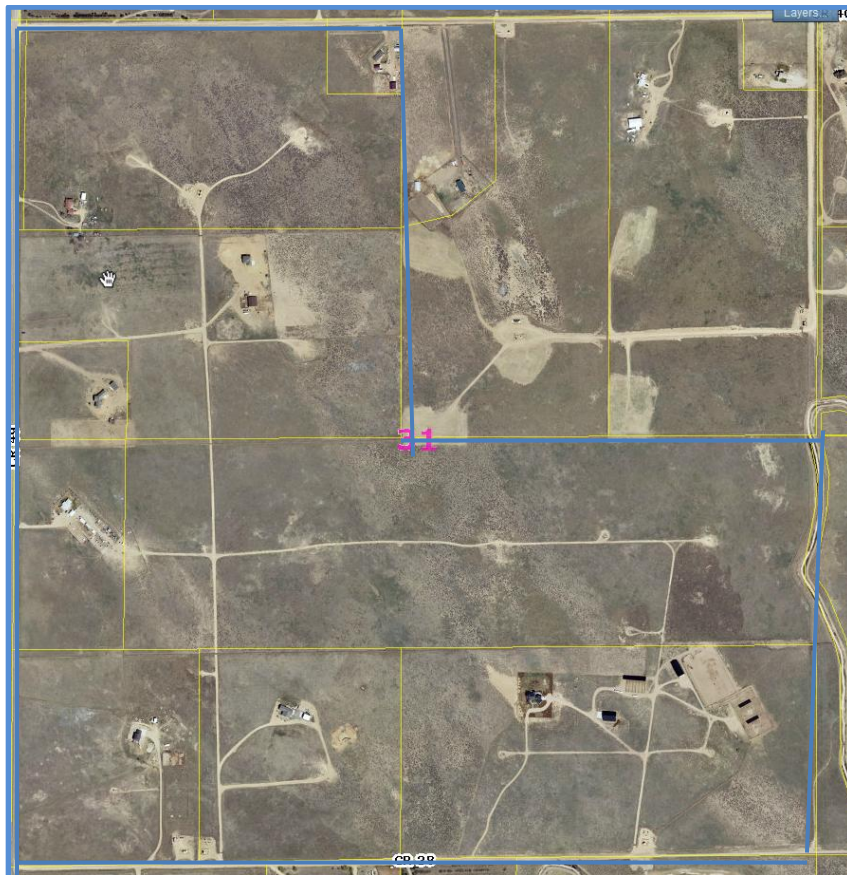
### Township 4 North, Range 65 West

Section 25:	NW/4, S/2	480.00
Section 33:	NW/4, S/2	480.00
Section 35:	NW/4, S/2	480.00

### Township 3 North, Range 65 West

Section 3:	Lot 2 (NW/4 NE/4) (40.26), S/2 NE/4	120.26
------------	--	--------

Containing 5,660.38 acres, more or less, in Weld County, Colorado.



Source: Weld County Assessor's website

Blue outline reflects portion of described lease in Sec. 31-T4N-R64W