

HALLIBURTON

iCem[®] Service

Post Job Report

K P KAUFFMAN CO, INC. EBIZ

For:

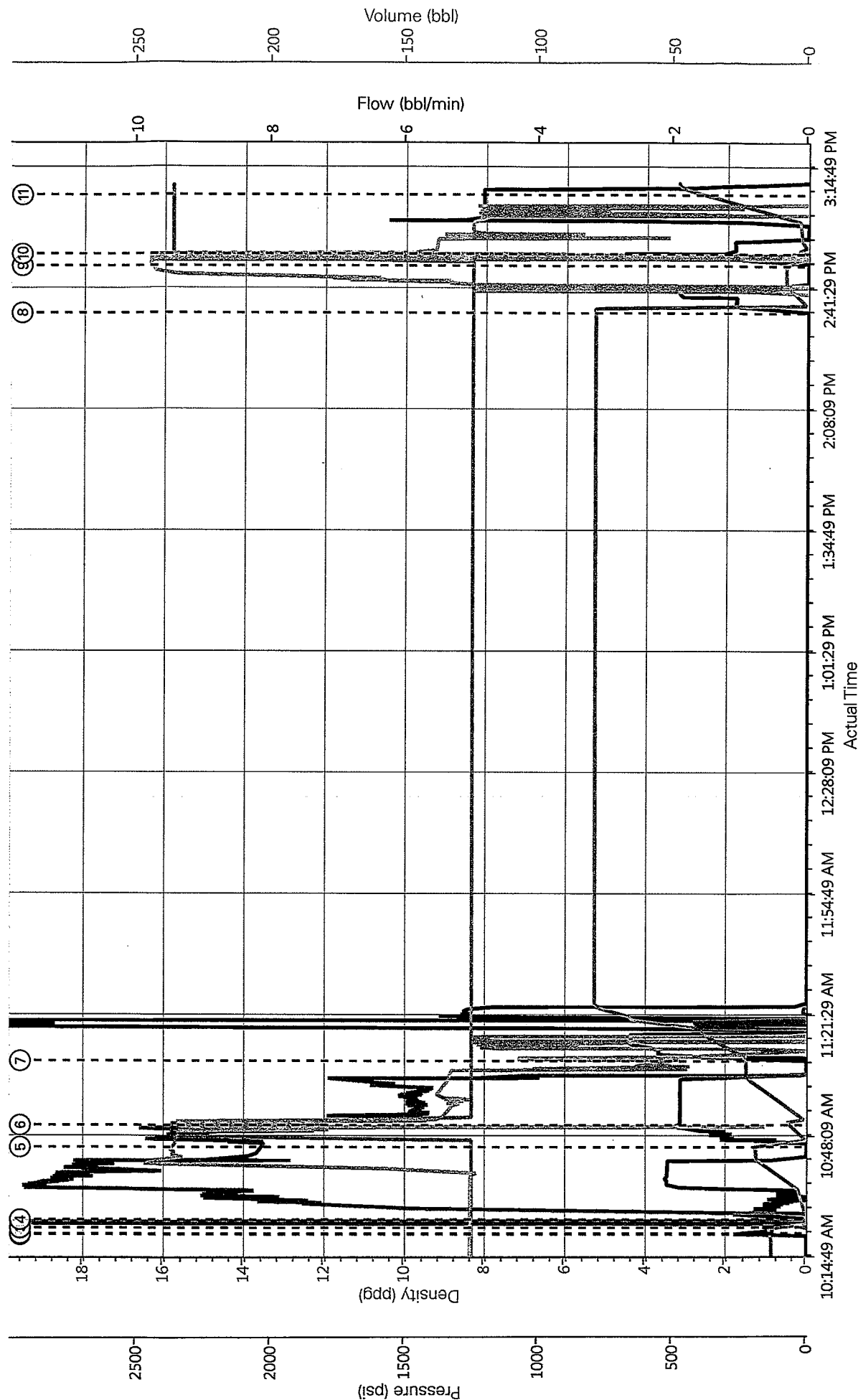
Date: Tuesday, May 06, 2014

Crissman 1-26 3

Case 1

Sincerely,

KP Kauffman Crissman 1-26



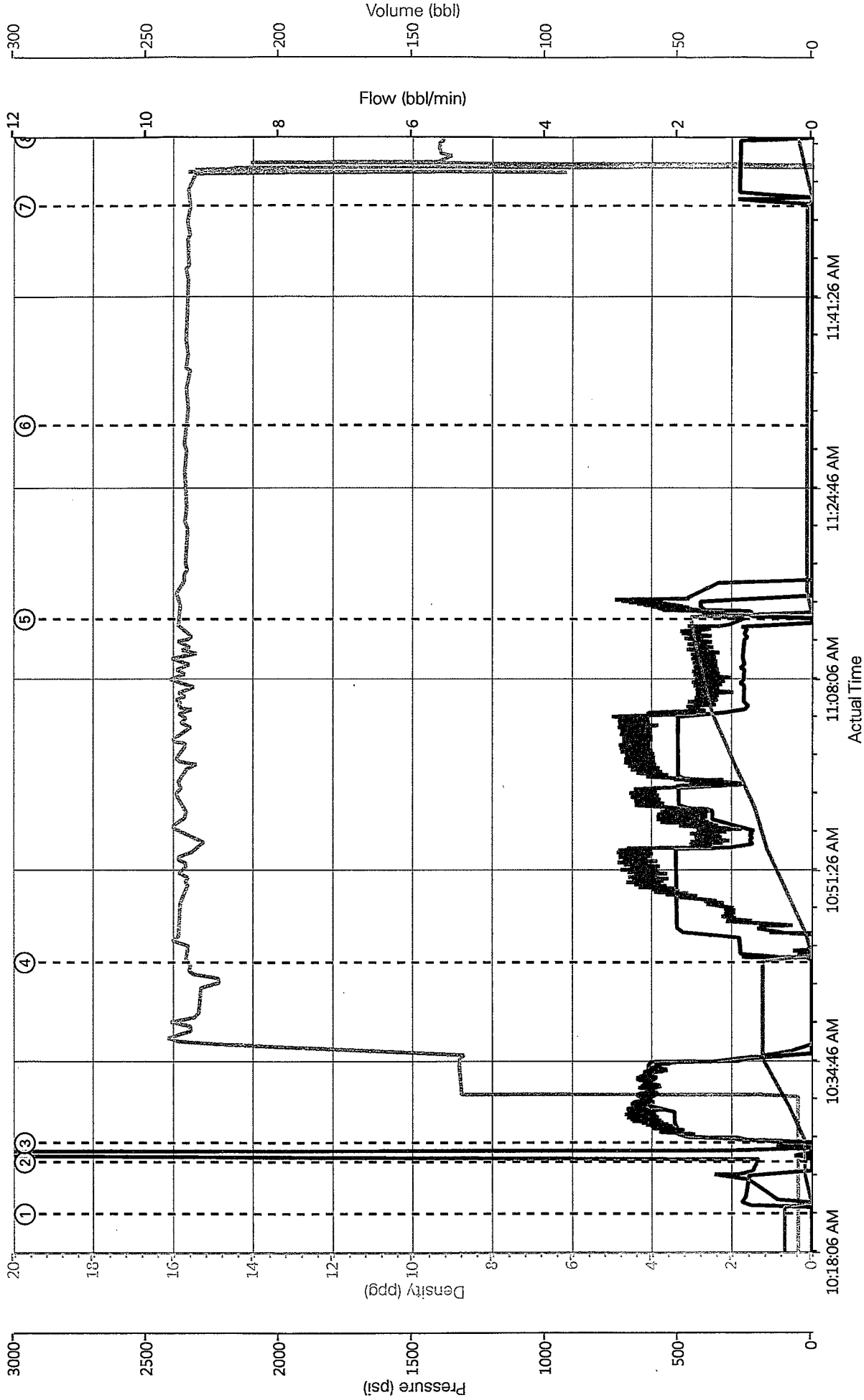
Comb Pump Rate (bbl/min) DS Pump Press (psi) Comb Pump Total (bbl) Cement Density (ppg) Recirc Density (ppg)

- Start Job 0.46;19.71;14.06;8.33;8.36 ④ Other 0;25.63;0.32;8.33;8.36 ⑦ Shutdown 1.11;-46.32;22.72;8.33;6.51 ⑩ Pump Displacement 1.04;-101.52;0;15.8;9.26
- Pump Spacer 1 0.52;-19.71;14.2;8.33;8.37 ⑤ Pump Cement 0;2026.41;19.24;8.33;15.69 ⑧ Pump Spacer 1 0;-108.42;79.14;8.33;-0.24 ⑪ End Job 4.83;-102.5;42.61;15.8;-0.19
- Test Lines 0;43.37;0.29;8.33;8.35 ⑥ Pump Displacement 1.89;1986.99;7.9;15.8;15.5 ⑨ Pump Cement 0;-115.32;8.59;8.33;16.38

1.1 Job Event Log

Type	Seq. No.	Activity	Graph Label	Date	Time	Source	Comb Pump Rate (bbl/min)	DS Pump Press (psi)	Comb Pump Total (bbl)	Density (ppg)	Redirc Density (ppg)	Comment
Event	1	Start Job	Start Job	5/5/2014	10:21:51	COM4	0.52	-19.71	14.0	8.33	8.36	
Event	2	Pump Spacer 1	Pump Spacer 1	5/5/2014	10:22:08	COM4	0.46	-19.71	14.2	8.33	8.37	
Event	3	Test Lines	Test Lines	5/5/2014	10:23:40	COM4	0.00	43.37	0.3	8.33	8.35	
Event	4	Other	Other	5/5/2014	10:25:58	COM4	0.00	-24.64	0.3	8.33	8.36	
Event	5	Pump Cement	Pump Cement	5/5/2014	10:45:54	COM4	0.00	2027.40	19.2	8.33	15.69	
Event	6	Pump Displacement	Pump Displacement	5/5/2014	10:51:55	COM4	1.89	1992.90	7.9	15.80	15.50	
Event	7	Shutdown	Shutdown	5/5/2014	11:09:34	COM4	1.11	-47.31	22.7	8.33	6.51	
Event	8	Pump Spacer 1	Pump Spacer 1	5/5/2014	14:35:31	COM4	0.00	-108.42	79.1	8.33	-0.24	
Event	9	Pump Cement	Pump Cement	5/5/2014	14:48:29	COM4	0.00	-116.30	8.6	8.33	16.39	
Event	10	Pump Displacement	Pump Displacement	5/5/2014	14:51:45	COM4	1.11	-106.45	3.7	15.80	9.19	
Event	11	End Job	End Job	5/5/2014	15:08:00	COM4	4.83	-101.52	42.5	15.80	-0.19	

KPK Crissman 1-26



Recirc Density (ppg) Comb Pump Rate (bbl/min) DS Pump Press (psi) Comb Pump Total (bbl)

- Start Job 0.35;0;-30.55;10.36 ④ Pump Cement 15.71;0;-36.47;18.69 ⑦ Pump Cement 15.56;0;-125.17;2.03
- Test Lines 0.34;0;202.05;2.67 ⑤ Pump Displacement 15.89;0.91;399.17;45.18 ⑧ Pump Displacement 9.29;1.04;88.7;5.73
- Pump Spacer 1 0.35;0.91;266.11;2.92 ⑥ Shutdown 15.69;0;-106.45;2.03

1.6 Job Event Log

Type	Seq. No.	Activity	Graph Label	Date	Time	Source	Recirc Density (ppg)	Comb Pump Rate (bbl/min)	DS Pump Press (psi)	Comb Pump Total (bbl)	Comment
Event	1	Start Job	Start Job	5/6/2014	10:21:45	COM4	0.36	0.00	-29.57	10.4	
Event	2	Test Lines	Test Lines	5/6/2014	10:26:16	COM4	0.33	0.00	202.05	2.7	
Event	3	Pump Spacer 1	Pump Spacer 1	5/6/2014	10:27:57	COM4	0.35	0.98	263.16	2.9	
Event	4	Pump Cement	Pump Cement	5/6/2014	10:43:41	COM4	15.71	0.00	-36.47	18.7	
Event	5	Pump Displacement	Pump Displacement	5/6/2014	11:13:37	COM4	15.88	0.91	410.01	45.2	
Event	6	Shutdown	Shutdown	5/6/2014	11:30:32	COM4	15.66	0.00	-105.46	2.0	
Event	7	Pump Cement	Pump Cement	5/6/2014	11:49:40	COM4	15.56	0.00	-125.17	2.0	
Event	8	Pump Displacement	Pump Displacement	5/6/2014	11:55:41	COM4	9.29	1.04	-88.70	5.7	

The Road to Excellence Starts with Safety

Sold To #: 303209	Ship To #: 303209	Quote #:	Sales Order #: 0901323910
Customer: K P KAUFFMAN CO, INC. EBIZ		Customer Rep:	
Well Name: Crissman	Well #: #1-26	API/UWI #:	
Field:	City (SAP): Strasburg	County/Parish: Adams	State: COLORADO
Legal Description:			
Contractor:		Rig/Platform Name/Num: Workover	
Job BOM: 7528			
Well Type: OIL & GAS WELL			
Sales Person: HALAMERICA\HX46524		Srv Supervisor: Jason Gibbs	
Job			

Formation Name			
Formation Depth (MD)	Top		Bottom
Form Type			BHST
Job depth MD	6220ft		Job Depth TVD
Water Depth			Wk Ht Above Floor
Perforation Depth (MD)	From		To

Well Data										
Description	New / Used	Size in	ID in	Weight lbm/ft	Thread	Grade	Top MD ft	Bottom MD ft	Top TVD ft	Bottom TVD ft
Casing		8.625	8.097	24			0	500		
Casing		4.5	4.052	10.5			0	6220		0
Casing		4.5	4.052				0	6220		0
Tubing		2.375	1.995	4.6			0	6220		0
Open Hole Section			7.875				0	6220		0
Casing		4.5	4.052				0	6320		0

Tools and Accessories									
Type	Size in	Qty	Make	Depth ft		Type	Size in	Qty	Make
Guide Shoe	4.5			6320		Top Plug	4.5		HES
Float Shoe	4.5					Bottom Plug	4.5		HES
Float Collar	4.5					SSR plug set	4.5		HES
Insert Float	4.5					Plug Container	4.5		HES
Stage Tool	4.5					Centralizers	4.5		HES

Miscellaneous Materials											
Gelling Agt		Conc		Surfactant		Conc		Acid Type		Qty	Conc
Treatment Fld		Conc		Inhibitor		Conc		Sand Type		Size	Qty

Fluid Data			
Stage/Plug #: 1			
Cement Left In Pipe	Amount	ft	Reason
Shoe Joint			
Fluid Data			
Stage/Plug #: 2			

Fluid #	Stage Type	Fluid Name	Qty	Qty UoM	Mixing Density lbm/gal	Yield ft ³ /sack	Mix Fluid Gal	Rate bbl/min	Total Mix Fluid Gal
1	Halcem B1	HALCEM (TM) SYSTEM	300	sack	15.8	1.15		4	4.98
4.98 Gal		FRESH WATER							
Cement Left In Pipe		Amount	ft	Reason			Shoe Joint		
Fluid Data									
Stage/Plug #: 3									
Cement Left In Pipe		Amount	ft	Reason			Shoe Joint		
Fluid Data									
Stage/Plug #: 4									
Cement Left In Pipe		Amount	ft	Reason			Shoe Joint		
Fluid Data									
Stage/Plug #: 5									
Cement Left In Pipe		Amount	ft	Reason			Shoe Joint		
Comment									

The Road to Excellence Starts with Safety

Sold To #: 303209	Ship To # 303209	Quote #:	Sales Order #: 0901323910
Customer: KPK	Customer Rep:		
Well Name: Crissman	Well #: 1-26	API/UWI #:	
Field: Wattenberg	City (SAP): Strasburg	County/Parish: Adams	State: Colorado
Lat:	Long:		
Contractor: Workover	Rig/Platform Name/Num: Workover		
Job Purpose: Cement PNA	Ticket Amount:		
Well Type: Development Well	Job Type: Cement PNA		
Sales Person: GREGORY, JON	Srv Supervisor: Jason E Gibbs	MBU ID Emp #: 300487	

Activity Description	Date/Time	Cht #	Rate bbl/min	Volume bbl		Pressure psig		Comments
				Stage	Total	Tubing	Casing	
Arrive at Location from Service Center	5/5/14 0700							
Assessment Of Location Safety Meeting	5/5/14 0730							Hazard Hunt of the location and rig
Pre-Job Safety Meeting	5/5/14 1000							
Test Lines	5/5/14 1021						4006	Test to 3995 psi
Pump Spacer 1	5/5/14 1022		1	20			2200	20bbl of H2O injection rate of 2200psi @ 2bbl/min
Pump Cement	5/5/14 1045		1	6			1569	30 sks of HalCem @15.8#/gal 1.15 yeild 5.0 gal/sk
Shutdown	5/5/14 1051							
Pump Displacement	5/5/14 1051		1	22.5			1562	Displace with H2O supplied by rig. Leave 1.3bbl in tubing to drop on top of retainer. Set @ 6220'
Shutdown	5/5/14 1109							Shutdown and wash and pump lines, rig pull out of hole and run back in open ended to 990'
Pump Spacer 1	5/5/14 1435		1	10			125	10bbl of H2O
Pump Cement	5/5/14 1448		1	2			265	10 sks of HalCem @15.8#/gal 1.15 yeild 5.0 gal/sk
Shutdown	5/5/14 1451							
Pump Displacement	5/5/14 1451		1	3			125	Displace with H2O supplied by rig. . Leave 1.3bbl in Casing'
Pump Spacer 1	5/6/14 1027		1	20			263	20bbl of H2O until we had good returns

HALLIBURTON

Cementing Job Log

Pump Cement	5/6/14 1043		1	49			410	240 sks of HalCem @15.8#/gal 1.15 yeild 5.0 gal/sk
Shutdown	5/6/14 1130							No cement to surface
Pump Displacement	5/6/14 1113		1	2			410	Displace with H2O supplied by rig. . Leave 1.3bbl in tubing to drop on top of retainer. Set @ 430'
Pump Cement	5/6/14 1149		1	4			0	20 sks of HalCem @15.8#/gal 1.15 yeild 5.0 gal/sk
Shutdown	5/6/14 1155						0	
Pump Displacement	5/6/14 1155		1	1			0	Displace with H2O supplied by rig. . Leave cement to surface

Sold To # : 340078

Ship To # :3456554

Prpsl #:

Sales Order # : 901232816

SUMMIT Version: 7.3.0127

Monday, May 05, 2014 03:23:00



PLEASE REMIT TO:
NABORS COMPLETION & PRODUCTION SERVICES CO.
P.O. BOX 975682
DALLAS, TX 75397-5682
435-725-5344

FIELD TICKET No. 20433
DELIVERED FROM 45
DATE 5-2-14

CUSTOMER NO.	LEASE <u>Crossman 1-26</u>	WELL NO.					
CUSTOMER <u>KPK</u>	FIELD <u>Irondale</u>	STATE <u>CO</u>	COUNTY <u>Adams</u>	INVOICE NO.			
ADDRESS	LOCATION <u>Streubing Rd. & Irondale</u>			P.O. NO.			
CITY	CASING SIZE & WT. <u>4 1/2</u>	TBG. SIZE	AFE NO.				
STATE	ZIP	TYPE OF JOB <u>Plug/Cement/Syc hole/Retainer</u>					
ORDERED BY <u>7601</u>	TITLE						
PART NO.		DESCRIPTION	REV. CODE	QTY.	UNIT PRICE	DISC.	AMOUNT

75-820-0045	Provide a Set 4 1/2 Over CIBP @ 6960						\$ 2100 -
70-899-0200	Dump Boiler - 2 Sacks Cement			6960	-25/17		\$ 1740 -
75-820-0045	Provide a Set 4 1/2 Over CIBP @ 6240						\$ 2100 -
75-825-1005	Squeeze Gun (3 shots) @ 6230						\$ 2000 -
75-820-1111	Downhole Cement Retainer @ 6220						\$ 2500 -
70-810-1111	Fuel Surcharge				3.5%		\$ 293 -
						Total	\$ 10733 -
						Discount	\$ 2060 -

WITH MY INITIALS, I CONFIRM THAT THE TIME SHOWN IN THE
"HOURS" COLUMN, ACCURATELY REFLECTS MY COMPENSABLE TIME.

Employee Name (Print)

Enc S. Steve

CUSTOMER AGREES to pay Nabors Completion & Production Services Co. (the "Company") on a net 30 day basis from date of invoice. If Customer disputes any item invoiced, Customer shall, within 20 days after receipt of invoice, notify the Company of the item(s) disputed, specifying the reason(s) therefor; payment of the disputed item(s) may be withheld until settlement of dispute, but payment of undisputed portion of invoice shall be made without delay. All payments shall be made at the address shown on the reverse side of this document. In the absence of a separate written contract, CUSTOMER REPRESENTATIVE REPRESENTS AND WARRANTS THAT HE/SHE IS AUTHORIZED TO ENTER INTO THIS AGREEMENT ON BEHALF OF CUSTOMER AND ACCEPTS ALL TERMS AND CONDITIONS AS PRINTED ON THE REVERSE SIDE OF THIS DOCUMENT (WHICH INCLUDES INDEMNITY/LANGUAGE THAT ALLOCATES RISKS RELATED TO THE ABOVE DESCRIBED SERVICES). Pricing and extensions, if shown above, are subject to verification and correction at time of invoicing.

* ACCIDENT REPORT MUST BE ATTACHED WHEN NOT SIGNED

NABORS COMPLETION & PRODUCTION SERVICES CO.

CUSTOMER REPRESENTATIVE

NAB0997 (09/12) • GMG Services, Inc. • 713 460-8801

White - Customer

Green - Customer

Canary - Accounting

Pink - Invoice

Gold - Field

