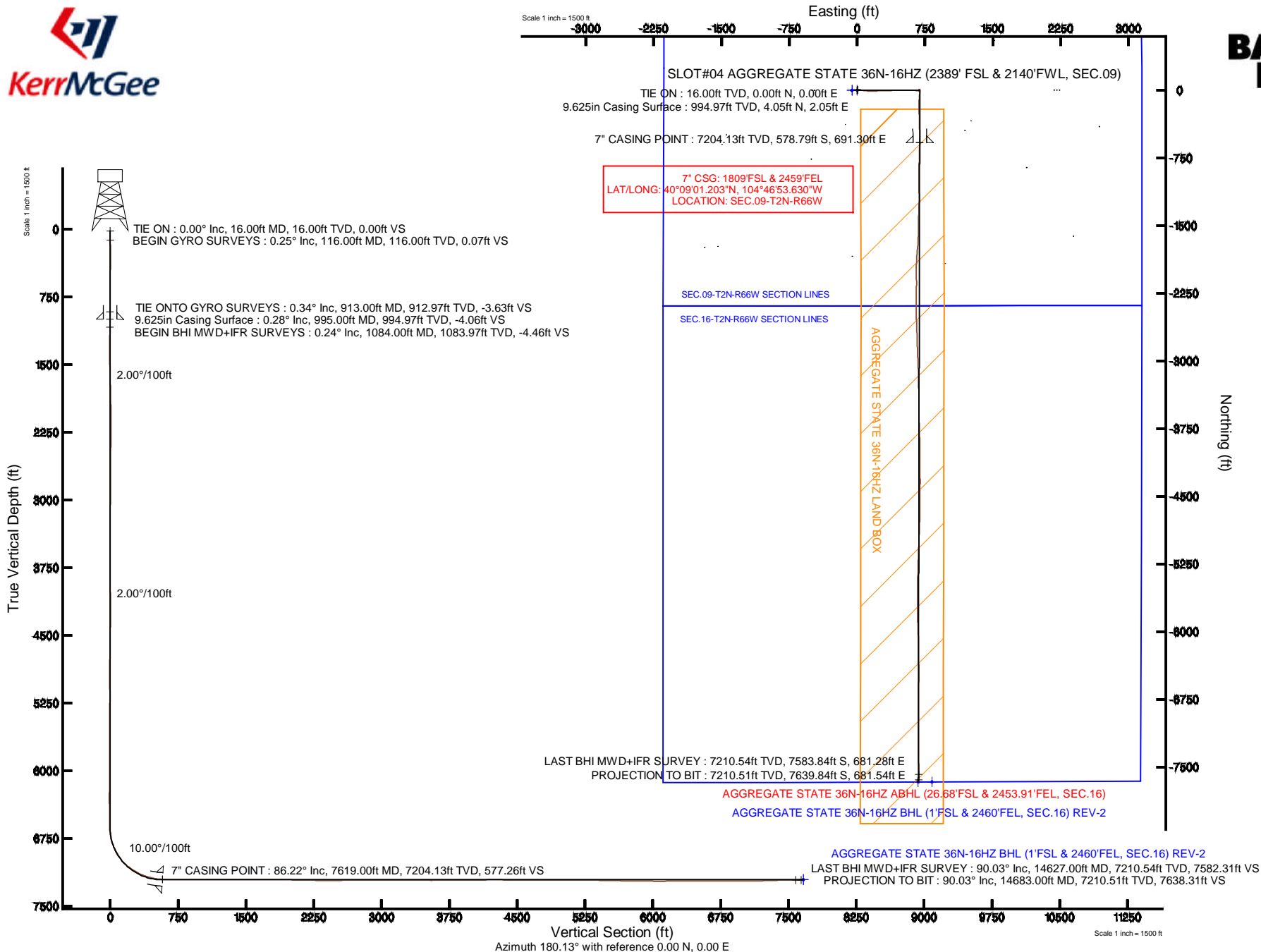


KERR-MCGEE OIL & GAS ONSHORE LP

Location: COLORADO Slot: SLOT#04 AGGREGATE STATE 36N-16HZ (2389' FSL & 2140'FWL, SEC.09)
 Field: WELD COUNTY (KERR MCGEE) Well: AGGREGATE STATE 36N-16HZ
 Facility: SEC.09-T2N-R66W Wellbore: AGGREGATE STATE 36N-16HZ PWB

Plot reference wellpath is AGGREGATE STATE 36N-16HZ (REV-B.0) PWP

True vertical depths are referenced to XTREME 20 (16KB) (RKB)	Grid System: NAD83 / Lambert Colorado SP, Northern Zone (501), US feet
Measured depths are referenced to XTREME 20 (16KB) (RKB)	North Reference: True north
XTREME 20 (16KB) (RKB) to Mean Sea Level: 4927 feet	Scale: True distance
Mean Sea Level to Mud line (At Slot: SLOT#04 AGGREGATE STATE 36N-16HZ (2389' FSL & 2140'FWL, SEC.09): 0 feet	Depths are in feet
Coordinates are in feet referenced to Slot	Created by: robale01 on 07/May/2014



REFERENCE WELLPATH IDENTIFICATION			
Operator	KERR-MCGEE OIL & GAS ONSHORE LP	Slot	SLOT#04 AGGREGATE STATE 36N-16HZ (2389' FSL & 2140'FWL, SEC.09)
Area	COLORADO	Well	AGGREGATE STATE 36N-16HZ
Field	WELD COUNTY (KERR MCGEE)	Wellbore	AGGREGATE STATE 36N-16HZ AWB
Facility	SEC.09-T2N-R66W		

REPORT SETUP INFORMATION			
Projection System	NAD83 / Lambert Colorado SP, Northern Zone (501), US feet	Software System	WellArchitect® 4.0.0
North Reference	True	User	Robiale01
Scale	0.999958	Report Generated	07/May/2014 at 12:50
Convergence at slot	n/a	Database/Source file	WellArchitectDB/AGGREGATE_STATE_36N-16HZ_AWB.xml

WELLPATH LOCATION						
	Local coordinates		Grid coordinates		Geographic coordinates	
	North[ft]	East[ft]	Easting[US ft]	Northing[US ft]	Latitude	Longitude
Slot Location	-771.06	-2582.11	3200130.61	1298996.84	40°09'06.923"N	104°47'02.533"W
Facility Reference Pt			3202706.22	1299788.95	40°09'14.544"N	104°46'29.280"W
Field Reference Pt			3197771.84	1268891.29	40°04'09.600"N	104°47'36.000"W

WELLPATH DATUM			
Calculation method	Minimum curvature	XTREME 20 (16'KB) (RKB) to Facility Vertical Datum	4927.00ft
Horizontal Reference Pt	Slot	XTREME 20 (16'KB) (RKB) to Mean Sea Level	4927.00ft
Vertical Reference Pt	XTREME 20 (16'KB) (RKB)	XTREME 20 (16'KB) (RKB) to Mud Line at Slot (SLOT#04 AGGREGATE STATE 36N-16HZ (2389' FSL & 2140'FWL, SEC.09))	4927.00ft
MD Reference Pt	XTREME 20 (16'KB) (RKB)	Section Origin	N 0.00, E 0.00 ft
Field Vertical Reference	Mean Sea Level	Section Azimuth	180.13°

Actual Wellpath Report

AGGREGATE STATE 36N-16HZ AWP

Page 2 of 7

REFERENCE WELLPATH IDENTIFICATION

Operator	KERR-MCGEE OIL & GAS ONSHORE LP	Slot	SLOT#04 AGGREGATE STATE 36N-16HZ (2389' FSL & 2140' FWL, SEC.09)
Area	COLORADO	Well	AGGREGATE STATE 36N-16HZ
Field	WELD COUNTY (KERR MCGEE)	Wellbore	AGGREGATE STATE 36N-16HZ AWB
Facility	SEC.09-T2N-R66W		

WELLPATH DATA (170 stations) † = interpolated/extrapolated station

MD [ft]	Inclination [°]	Azimuth [°]	TVD [ft]	Vert Sect [ft]	North [ft]	East [ft]	Latitude	Longitude	DLS [°/100ft]	Comments
0.00†	0.000	252.570	0.00	0.00	0.00	0.00	40°09'06.923"N	104°47'02.533"W	0.00	
16.00	0.000	252.570	16.00	0.00	0.00	0.00	40°09'06.923"N	104°47'02.533"W	0.00	TIE ON
116.00	0.250	252.570	116.00	0.07	-0.07	-0.21	40°09'06.922"N	104°47'02.536"W	0.25	BEGIN GYRO SURVEYS
216.00	0.030	296.760	216.00	0.12	-0.12	-0.44	40°09'06.922"N	104°47'02.539"W	0.23	
316.00	0.240	125.600	316.00	0.23	-0.23	-0.29	40°09'06.921"N	104°47'02.537"W	0.27	
416.00	0.610	71.570	416.00	0.18	-0.18	0.38	40°09'06.921"N	104°47'02.528"W	0.51	
516.00	0.670	66.670	515.99	-0.22	0.22	1.42	40°09'06.925"N	104°47'02.515"W	0.08	
616.00	0.610	21.710	615.98	-0.95	0.94	2.16	40°09'06.932"N	104°47'02.505"W	0.49	
716.00	0.570	2.130	715.98	-1.94	1.93	2.37	40°09'06.942"N	104°47'02.502"W	0.20	
816.00	0.540	351.080	815.97	-2.90	2.90	2.32	40°09'06.952"N	104°47'02.503"W	0.11	
913.00	0.340	340.880	912.97	-3.63	3.62	2.15	40°09'06.959"N	104°47'02.505"W	0.22	TIE ONTO GYRO SURVEYS
1084.00	0.240	10.480	1083.97	-4.46	4.45	2.05	40°09'06.967"N	104°47'02.507"W	0.10	BEGIN BHI MWD+IFR SURVEYS
1178.00	0.450	3.470	1177.97	-5.02	5.01	2.11	40°09'06.973"N	104°47'02.506"W	0.23	
1272.00	2.420	80.170	1271.94	-5.73	5.72	4.09	40°09'06.980"N	104°47'02.480"W	2.51	
1366.00	4.360	89.120	1365.77	-6.14	6.12	9.62	40°09'06.983"N	104°47'02.409"W	2.13	
1460.00	6.280	97.250	1459.36	-5.56	5.52	18.29	40°09'06.978"N	104°47'02.297"W	2.19	
1555.00	7.260	101.990	1553.70	-3.68	3.62	29.32	40°09'06.959"N	104°47'02.155"W	1.19	
1647.00	8.810	97.800	1644.79	-1.55	1.45	41.99	40°09'06.937"N	104°47'01.992"W	1.80	
1739.00	10.760	95.690	1735.45	0.23	-0.35	57.51	40°09'06.920"N	104°47'01.792"W	2.15	
1831.00	11.960	97.980	1825.65	2.36	-2.53	75.50	40°09'06.898"N	104°47'01.561"W	1.39	
1923.00	13.210	96.210	1915.44	4.78	-4.99	95.39	40°09'06.874"N	104°47'01.305"W	1.42	
2014.00	14.400	95.210	2003.81	6.88	-7.14	117.00	40°09'06.852"N	104°47'01.026"W	1.33	
2106.00	15.900	91.770	2092.61	8.26	-8.57	140.99	40°09'06.838"N	104°47'00.717"W	1.90	
2198.00	16.860	88.730	2180.87	8.29	-8.66	166.92	40°09'06.837"N	104°47'00.383"W	1.40	
2290.00	16.580	88.050	2268.98	7.49	-7.92	193.38	40°09'06.845"N	104°47'00.043"W	0.37	
2382.00	16.620	86.760	2357.15	6.24	-6.73	219.63	40°09'06.856"N	104°46'59.705"W	0.40	
2473.00	16.010	86.190	2444.49	4.62	-5.16	245.15	40°09'06.872"N	104°46'59.376"W	0.69	
2565.00	15.000	86.630	2533.14	3.02	-3.62	269.69	40°09'06.887"N	104°46'59.060"W	1.11	
2656.00	14.880	89.710	2621.06	2.22	-2.87	293.13	40°09'06.895"N	104°46'58.758"W	0.88	
2748.00	14.960	90.740	2709.96	2.26	-2.96	316.82	40°09'06.894"N	104°46'58.453"W	0.30	
2839.00	16.200	88.660	2797.62	2.06	-2.81	341.26	40°09'06.895"N	104°46'58.138"W	1.49	
2930.00	16.250	87.620	2884.99	1.18	-1.99	366.67	40°09'06.903"N	104°46'57.811"W	0.32	
3022.00	15.650	90.070	2973.45	0.60	-1.47	391.94	40°09'06.908"N	104°46'57.486"W	0.98	
3113.00	16.690	87.990	3060.85	0.10	-1.03	417.27	40°09'06.913"N	104°46'57.159"W	1.31	
3205.00	16.220	87.270	3149.08	-1.03	0.05	443.31	40°09'06.923"N	104°46'56.824"W	0.56	
3296.00	15.060	88.660	3236.71	-1.97	0.93	467.83	40°09'06.932"N	104°46'56.508"W	1.34	
3381.00	15.210	91.750	3318.76	-1.93	0.85	490.01	40°09'06.931"N	104°46'56.223"W	0.97	
3467.00	15.730	90.210	3401.65	-1.60	0.46	512.94	40°09'06.928"N	104°46'55.927"W	0.77	
3552.00	15.550	90.030	3483.50	-1.60	0.41	535.86	40°09'06.927"N	104°46'55.632"W	0.22	
3637.00	14.500	89.840	3565.59	-1.67	0.44	557.89	40°09'06.927"N	104°46'55.348"W	1.24	
3722.00	13.980	89.130	3647.98	-1.91	0.62	578.80	40°09'06.929"N	104°46'55.079"W	0.65	
3807.00	12.540	91.120	3730.71	-1.92	0.60	598.30	40°09'06.929"N	104°46'54.828"W	1.78	
3892.00	11.320	91.980	3813.88	-1.49	0.13	615.86	40°09'06.924"N	104°46'54.602"W	1.45	
3977.00	10.000	90.410	3897.41	-1.19	-0.21	631.58	40°09'06.921"N	104°46'54.399"W	1.59	
4063.00	9.020	96.010	3982.23	-0.46	-0.97	645.75	40°09'06.913"N	104°46'54.217"W	1.57	

REFERENCE WELLPATH IDENTIFICATION

Operator	KERR-MCGEE OIL & GAS ONSHORE LP	Slot	SLOT#04 AGGREGATE STATE 36N-16HZ (2389' FSL & 2140' FWL, SEC.09)
Area	COLORADO	Well	AGGREGATE STATE 36N-16HZ
Field	WELD COUNTY (KERR MCGEE)	Wellbore	AGGREGATE STATE 36N-16HZ AWP
Facility	SEC.09-T2N-R66W		

WELLPATH DATA (170 stations) † = interpolated/extrapolated station

MD [ft]	Inclination [°]	Azimuth [°]	TVD [ft]	Vert Sect [ft]	North [ft]	East [ft]	Latitude	Longitude	DLS [°/100ft]	Comments
4147.00	8.110	93.670	4065.29	0.58	-2.04	658.21	40°09'06.903"N	104°46'54.056"W	1.16	
4232.00	7.300	93.250	4149.52	1.25	-2.73	669.59	40°09'06.896"N	104°46'53.910"W	0.96	
4317.00	5.500	94.060	4233.99	1.82	-3.32	679.04	40°09'06.890"N	104°46'53.788"W	2.12	
4402.00	3.370	79.200	4318.73	1.62	-3.14	685.56	40°09'06.892"N	104°46'53.704"W	2.83	
4487.00	1.850	43.420	4403.65	0.15	-1.68	688.96	40°09'06.906"N	104°46'53.660"W	2.54	
4572.00	0.870	6.360	4488.62	-1.49	-0.04	689.97	40°09'06.922"N	104°46'53.647"W	1.49	
4657.00	0.880	331.420	4573.61	-2.70	1.17	689.73	40°09'06.934"N	104°46'53.650"W	0.62	
4828.00	1.020	306.180	4744.59	-4.75	3.22	687.87	40°09'06.955"N	104°46'53.674"W	0.26	
4998.00	0.380	233.170	4914.58	-5.30	3.78	686.20	40°09'06.960"N	104°46'53.696"W	0.58	
5168.00	0.500	264.720	5084.57	-4.89	3.37	685.01	40°09'06.956"N	104°46'53.711"W	0.16	
5338.00	0.510	275.470	5254.57	-4.89	3.38	683.52	40°09'06.956"N	104°46'53.730"W	0.06	
5509.00	0.860	77.000	5425.56	-5.26	3.74	684.01	40°09'06.960"N	104°46'53.724"W	0.79	
5679.00	0.810	24.360	5595.55	-6.64	5.12	685.75	40°09'06.974"N	104°46'53.702"W	0.44	
5764.00	0.400	31.640	5680.54	-7.44	5.92	686.16	40°09'06.981"N	104°46'53.697"W	0.49	
5934.00	0.530	292.790	5850.54	-8.25	6.73	685.74	40°09'06.989"N	104°46'53.702"W	0.42	
6104.00	0.060	4.440	6020.54	-8.64	7.12	685.02	40°09'06.993"N	104°46'53.711"W	0.30	
6274.00	1.240	291.960	6190.52	-9.41	7.90	683.32	40°09'07.001"N	104°46'53.733"W	0.72	
6359.00	0.540	320.690	6275.51	-10.07	8.55	682.22	40°09'07.007"N	104°46'53.747"W	0.95	
6444.00	1.220	121.320	6360.51	-9.91	8.39	682.74	40°09'07.006"N	104°46'53.741"W	2.05	
6529.00	1.370	109.800	6445.49	-9.10	7.58	684.47	40°09'06.998"N	104°46'53.718"W	0.35	
6614.00	1.700	113.050	6530.45	-8.26	6.74	686.58	40°09'06.990"N	104°46'53.691"W	0.40	
6657.00	1.890	108.800	6573.43	-7.79	6.26	687.84	40°09'06.985"N	104°46'53.675"W	0.54	
6700.00	1.710	118.780	6616.41	-7.25	5.73	689.07	40°09'06.979"N	104°46'53.659"W	0.84	
6743.00	4.390	167.670	6659.35	-5.34	3.81	689.99	40°09'06.961"N	104°46'53.647"W	8.16	
6785.00	8.020	174.350	6701.10	-0.85	-0.68	690.62	40°09'06.916"N	104°46'53.639"W	8.80	
6828.00	12.400	176.650	6743.41	6.74	-8.28	691.19	40°09'06.841"N	104°46'53.632"W	10.23	
6870.00	16.500	178.400	6784.07	17.21	-18.75	691.62	40°09'06.738"N	104°46'53.626"W	9.82	
6913.00	21.060	183.090	6824.77	31.04	-32.57	691.37	40°09'06.601"N	104°46'53.629"W	11.16	
6955.00	24.720	185.100	6863.46	47.33	-48.86	690.18	40°09'06.440"N	104°46'53.645"W	8.91	
6998.00	28.760	186.050	6901.86	66.58	-68.11	688.29	40°09'06.250"N	104°46'53.669"W	9.45	
7040.00	32.190	184.010	6938.05	87.80	-89.33	686.44	40°09'06.040"N	104°46'53.693"W	8.53	
7083.00	36.920	183.700	6973.45	112.13	-113.65	684.81	40°09'05.800"N	104°46'53.714"W	11.01	
7125.00	41.430	183.890	7006.00	138.60	-140.12	683.05	40°09'05.538"N	104°46'53.737"W	10.74	
7168.00	47.160	181.430	7036.77	168.59	-170.10	681.69	40°09'05.242"N	104°46'53.754"W	13.91	
7210.00	51.780	178.550	7064.06	200.50	-202.01	681.72	40°09'04.927"N	104°46'53.754"W	12.17	
7253.00	55.300	174.570	7089.62	234.99	-236.51	683.83	40°09'04.586"N	104°46'53.727"W	11.06	
7296.00	60.140	177.600	7112.58	271.24	-272.76	686.28	40°09'04.227"N	104°46'53.695"W	12.73	
7339.00	61.440	178.970	7133.56	308.75	-310.28	687.40	40°09'03.857"N	104°46'53.681"W	4.11	
7381.00	66.180	178.310	7152.09	346.42	-347.94	688.30	40°09'03.485"N	104°46'53.669"W	11.37	
7424.00	70.310	178.030	7168.03	386.32	-387.85	689.58	40°09'03.090"N	104°46'53.653"W	9.62	
7466.00	75.040	179.460	7180.53	426.39	-427.92	690.45	40°09'02.694"N	104°46'53.641"W	11.72	
7509.00	78.160	179.260	7190.50	468.21	-469.75	690.92	40°09'02.281"N	104°46'53.635"W	7.27	
7551.00	82.000	179.510	7197.73	509.57	-511.11	691.36	40°09'01.872"N	104°46'53.630"W	9.16	
7582.00	84.900	180.060	7201.27	540.37	-541.90	691.47	40°09'01.568"N	104°46'53.628"W	9.52	
7619.00†	86.216	180.478	7204.13	577.26	-578.79	691.30	40°09'01.203"N	104°46'53.630"W	3.73	7" CASING POINT

REFERENCE WELLPATH IDENTIFICATION

Operator	KERR-MCGEE OIL & GAS ONSHORE LP	Slot	SLOT#04 AGGREGATE STATE 36N-16HZ (2389' FSL & 2140' FWL, SEC.09)
Area	COLORADO	Well	AGGREGATE STATE 36N-16HZ
Field	WELD COUNTY (KERR MCGEE)	Wellbore	AGGREGATE STATE 36N-16HZ AWB
Facility	SEC.09-T2N-R66W		

WELLPATH DATA (170 stations)

MD [ft]	Inclination [°]	Azimuth [°]	TVD [ft]	Vert Sect [ft]	North [ft]	East [ft]	Latitude	Longitude	DLS [°/100ft]	Comments
7733.00	90.270	181.760	7207.63	691.16	-692.69	689.07	40°09'00.078"N	104°46'53.659"W	3.73	
7825.00	90.520	181.750	7206.99	783.12	-784.64	686.26	40°08'59.169"N	104°46'53.696"W	0.27	
7916.00	90.670	180.680	7206.05	874.10	-875.62	684.33	40°08'58.270"N	104°46'53.720"W	1.19	
8008.00	90.270	179.720	7205.29	966.09	-967.61	684.01	40°08'57.361"N	104°46'53.725"W	1.13	
8100.00	90.610	179.540	7204.59	1058.09	-1059.61	684.60	40°08'56.452"N	104°46'53.717"W	0.42	
8191.00	90.270	179.240	7203.89	1149.08	-1150.60	685.57	40°08'55.553"N	104°46'53.705"W	0.50	
8375.00	89.500	182.420	7204.26	1333.04	-1334.55	682.90	40°08'53.735"N	104°46'53.739"W	1.78	
8466.00	90.210	182.490	7204.49	1423.96	-1425.47	679.01	40°08'52.836"N	104°46'53.789"W	0.78	
8558.00	90.000	180.350	7204.32	1515.93	-1517.43	676.73	40°08'51.928"N	104°46'53.819"W	2.34	
8649.00	89.200	180.680	7204.95	1606.93	-1608.43	675.91	40°08'51.028"N	104°46'53.829"W	0.95	
8741.00	89.660	184.220	7205.87	1698.83	-1700.32	671.98	40°08'50.120"N	104°46'53.880"W	3.88	
8833.00	90.120	186.330	7206.05	1790.45	-1791.93	663.52	40°08'49.215"N	104°46'53.989"W	2.35	
8925.00	89.080	181.980	7206.69	1882.20	-1883.66	656.85	40°08'48.308"N	104°46'54.075"W	4.86	
9016.00	89.500	181.320	7207.82	1973.16	-1974.62	654.23	40°08'47.410"N	104°46'54.108"W	0.86	
9108.00	88.580	178.030	7209.36	2065.13	-2066.59	654.76	40°08'46.501"N	104°46'54.102"W	3.71	
9200.00	88.820	180.680	7211.45	2157.09	-2158.55	655.79	40°08'45.592"N	104°46'54.088"W	2.89	
9292.00	89.160	181.170	7213.07	2249.07	-2250.52	654.31	40°08'44.683"N	104°46'54.107"W	0.65	
9384.00	89.040	180.380	7214.51	2341.05	-2342.50	653.06	40°08'43.774"N	104°46'54.124"W	0.87	
9476.00	90.670	179.550	7214.74	2433.05	-2434.50	653.12	40°08'42.865"N	104°46'54.123"W	1.99	
9567.00	90.640	178.020	7213.70	2524.01	-2525.47	655.05	40°08'41.966"N	104°46'54.098"W	1.68	
9659.00	90.150	178.070	7213.07	2615.95	-2617.41	658.19	40°08'41.057"N	104°46'54.058"W	0.54	
9751.00	90.180	177.880	7212.81	2707.88	-2709.36	661.44	40°08'40.149"N	104°46'54.016"W	0.21	
9842.00	90.090	178.320	7212.59	2798.83	-2800.31	664.45	40°08'39.250"N	104°46'53.977"W	0.49	
9933.00	90.240	177.870	7212.33	2889.77	-2891.25	667.48	40°08'38.351"N	104°46'53.938"W	0.52	
10025.00	89.290	177.420	7212.71	2981.68	-2983.17	671.26	40°08'37.443"N	104°46'53.889"W	1.14	
10116.00	90.120	177.840	7213.17	3072.59	-3074.09	675.02	40°08'36.544"N	104°46'53.841"W	1.02	
10208.00	90.460	178.950	7212.71	3164.55	-3166.06	677.60	40°08'35.636"N	104°46'53.808"W	1.26	
10299.00	90.030	178.730	7212.32	3255.52	-3257.04	679.44	40°08'34.737"N	104°46'53.784"W	0.53	
10390.00	89.500	178.700	7212.69	3346.49	-3348.01	681.48	40°08'33.838"N	104°46'53.758"W	0.58	
10482.00	90.060	179.870	7213.05	3438.48	-3440.00	682.63	40°08'32.929"N	104°46'53.743"W	1.41	
10567.00	89.720	179.310	7213.21	3523.48	-3525.00	683.24	40°08'32.089"N	104°46'53.735"W	0.77	
10653.00	90.400	179.310	7213.12	3609.47	-3610.99	684.27	40°08'31.239"N	104°46'53.722"W	0.79	
10738.00	90.180	178.400	7212.69	3694.44	-3695.97	685.97	40°08'30.399"N	104°46'53.700"W	1.10	
10823.00	90.030	178.020	7212.53	3779.40	-3780.93	688.63	40°08'29.559"N	104°46'53.666"W	0.48	
10908.00	89.960	178.930	7212.54	3864.36	-3865.90	690.89	40°08'28.720"N	104°46'53.637"W	1.07	
10993.00	90.430	180.010	7212.25	3949.35	-3950.90	691.68	40°08'27.880"N	104°46'53.627"W	1.39	
11078.00	90.860	179.350	7211.29	4034.34	-4035.89	692.15	40°08'27.040"N	104°46'53.621"W	0.93	
11163.00	91.720	179.350	7209.38	4119.31	-4120.86	693.11	40°08'26.200"N	104°46'53.608"W	1.01	
11248.00	90.300	179.230	7207.88	4204.29	-4205.84	694.17	40°08'25.361"N	104°46'53.595"W	1.68	
11333.00	89.630	179.150	7207.93	4289.28	-4290.83	695.37	40°08'24.521"N	104°46'53.579"W	0.79	
11418.00	89.690	180.720	7208.44	4374.27	-4375.83	695.47	40°08'23.681"N	104°46'53.578"W	1.85	
11503.00	89.690	180.240	7208.90	4459.27	-4460.82	694.75	40°08'22.841"N	104°46'53.587"W	0.56	
11588.00	88.610	180.130	7210.16	4544.26	-4545.81	694.48	40°08'22.001"N	104°46'53.591"W	1.28	
11674.00	89.070	180.570	7211.90	4630.24	-4631.79	693.95	40°08'21.151"N	104°46'53.598"W	0.74	
11759.00	89.900	181.500	7212.67	4715.22	-4716.77	692.42	40°08'20.311"N	104°46'53.618"W	1.47	

REFERENCE WELLPATH IDENTIFICATION			
Operator	KERR-MCGEE OIL & GAS ONSHORE LP	Slot	SLOT#04 AGGREGATE STATE 36N-16HZ (2389' FSL & 2140'FWL, SEC.09)
Area	COLORADO	Well	AGGREGATE STATE 36N-16HZ
Field	WELD COUNTY (KERR MCGEE)	Wellbore	AGGREGATE STATE 36N-16HZ AWB
Facility	SEC.09-T2N-R66W		

WELLPATH DATA (170 stations)										
MD [ft]	Inclination [°]	Azimuth [°]	TVD [ft]	Vert Sect [ft]	North [ft]	East [ft]	Latitude	Longitude	DLS [°/100ft]	Comments
11844.00	91.070	182.270	7211.95	4800.18	-4801.72	689.62	40°08'19.472"N	104°46'53.654"W	1.65	
11929.00	91.070	181.750	7210.36	4885.12	-4886.65	686.64	40°08'18.633"N	104°46'53.692"W	0.61	
12014.00	90.550	181.810	7209.16	4970.07	-4971.60	684.00	40°08'17.793"N	104°46'53.726"W	0.62	
12100.00	89.720	182.290	7208.95	5056.02	-5057.55	680.93	40°08'16.944"N	104°46'53.766"W	1.11	
12185.00	89.630	182.090	7209.44	5140.97	-5142.48	677.68	40°08'16.105"N	104°46'53.808"W	0.26	
12270.00	89.290	182.530	7210.24	5225.90	-5227.41	674.25	40°08'15.265"N	104°46'53.852"W	0.65	
12355.00	89.160	180.760	7211.39	5310.86	-5312.36	671.81	40°08'14.426"N	104°46'53.883"W	2.09	
12440.00	88.670	181.240	7213.00	5395.84	-5397.33	670.33	40°08'13.586"N	104°46'53.902"W	0.81	
12525.00	89.130	180.360	7214.63	5480.81	-5482.31	669.14	40°08'12.746"N	104°46'53.918"W	1.17	
12610.00	88.300	180.580	7216.53	5565.79	-5567.28	668.45	40°08'11.907"N	104°46'53.927"W	1.01	
12695.00	89.100	180.530	7218.46	5650.76	-5652.26	667.62	40°08'11.067"N	104°46'53.937"W	0.94	
12781.00	89.930	179.330	7219.19	5736.76	-5738.25	667.73	40°08'10.217"N	104°46'53.936"W	1.70	
12866.00	88.890	179.390	7220.07	5821.75	-5823.24	668.68	40°08'09.377"N	104°46'53.924"W	1.23	
12951.00	89.190	177.790	7221.49	5906.70	-5908.20	670.77	40°08'08.538"N	104°46'53.897"W	1.91	
13036.00	88.640	178.000	7223.10	5991.62	-5993.13	673.89	40°08'07.698"N	104°46'53.857"W	0.69	
13121.00	90.300	178.970	7223.89	6076.58	-6078.09	676.14	40°08'06.859"N	104°46'53.828"W	2.26	
13206.00	90.830	179.190	7223.05	6161.56	-6163.08	677.50	40°08'06.019"N	104°46'53.810"W	0.68	
13291.00	90.860	179.100	7221.79	6246.54	-6248.06	678.77	40°08'05.179"N	104°46'53.794"W	0.11	
13376.00	90.330	179.120	7220.91	6331.52	-6333.04	680.09	40°08'04.339"N	104°46'53.777"W	0.62	
13461.00	89.410	179.200	7221.10	6416.51	-6418.03	681.34	40°08'03.499"N	104°46'53.761"W	1.09	
13546.00	89.350	180.700	7222.02	6501.50	-6503.02	681.41	40°08'02.660"N	104°46'53.760"W	1.77	
13631.00	90.830	180.770	7221.89	6586.49	-6588.01	680.32	40°08'01.820"N	104°46'53.774"W	1.74	
13716.00	89.810	180.810	7221.42	6671.48	-6673.00	679.15	40°08'00.980"N	104°46'53.789"W	1.20	
13802.00	89.900	180.350	7221.63	6757.48	-6759.00	678.28	40°08'00.130"N	104°46'53.800"W	0.55	
13886.00	90.360	179.900	7221.44	6841.48	-6843.00	678.09	40°07'59.300"N	104°46'53.803"W	0.77	
13971.00	91.140	179.890	7220.33	6926.47	-6927.99	678.25	40°07'58.460"N	104°46'53.801"W	0.92	
14056.00	89.870	179.110	7219.58	7011.46	-7012.98	678.99	40°07'57.620"N	104°46'53.791"W	1.75	
14142.00	89.810	179.510	7219.82	7097.45	-7098.97	680.03	40°07'56.770"N	104°46'53.778"W	0.47	
14227.00	91.200	180.180	7219.07	7182.44	-7183.97	680.26	40°07'55.930"N	104°46'53.775"W	1.82	
14312.00	91.350	180.170	7217.18	7267.42	-7268.95	680.00	40°07'55.091"N	104°46'53.778"W	0.18	
14397.00	92.150	180.230	7214.59	7352.38	-7353.91	679.70	40°07'54.251"N	104°46'53.782"W	0.94	
14483.00	91.500	179.170	7211.85	7438.33	-7439.86	680.15	40°07'53.402"N	104°46'53.776"W	1.45	
14567.00	90.150	179.700	7210.64	7522.32	-7523.84	680.98	40°07'52.572"N	104°46'53.766"W	1.73	
14627.00	90.030	179.730	7210.54	7582.31	-7583.84	681.28	40°07'51.979"N	104°46'53.762"W	0.21	LAST BHI MWD+IFR SURVEY
14683.00	90.030	179.730	7210.51	7638.31	-7639.84	681.54	40°07'51.425"N	104°46'53.759"W	0.00	PROJECTION TO BIT

REFERENCE WELLPATH IDENTIFICATION			
Operator	KERR-MCGEE OIL & GAS ONSHORE LP	Slot	SLOT#04 AGGREGATE STATE 36N-16HZ (2389' FSL & 2140'FWL, SEC.09)
Area	COLORADO	Well	AGGREGATE STATE 36N-16HZ
Field	WELD COUNTY (KERR MCGEE)	Wellbore	AGGREGATE STATE 36N-16HZ AWB
Facility	SEC.09-T2N-R66W		

HOLE & CASING SECTIONS - Ref Wellbore: AGGREGATE STATE 36N-16HZ AWB Ref Wellpath: AGGREGATE STATE 36N-16HZ AWP									
String/Diameter	Start MD [ft]	End MD [ft]	Interval [ft]	Start TVD [ft]	End TVD [ft]	Start N/S [ft]	Start E/W [ft]	End N/S [ft]	End E/W [ft]
13.5in Open Hole	16.00	1005.00	989.00	16.00	1004.97	0.00	0.00	4.10	2.04
9.625in Casing Surface	16.00	995.00	979.00	16.00	994.97	0.00	0.00	4.05	2.05
8.75in Open Hole	1005.00	7630.00	6625.00	1004.97	7204.82	4.10	2.04	-589.77	691.20
7in Casing Intermediate	16.00	7619.00	7603.00	16.00	7204.13	0.00	0.00	-578.79	691.30
6.125in Open Hole	7630.00	14683.00	7053.00	7204.82	7210.51	-589.77	691.20	-7639.84	681.54

TARGETS									
Name	MD [ft]	TVD [ft]	North [ft]	East [ft]	Grid East [US ft]	Grid North [US ft]	Latitude	Longitude	Shape
SE-C.16-T2N-R66W SECTION LINES		0.00	0.00	-57.31	3200073.31	1298996.37	40°09'06.923"N	104°47'03.271"W	polygon
SEC.09-T2N-R66W SECTION LINES		0.00	0.00	-57.31	3200073.31	1298996.37	40°09'06.923"N	104°47'03.271"W	polygon
AGGREGATE STATE 36N-16HZ BHL (1'FSL & 2460'FEL, SEC.16) REV-2		7207.00	-7665.52	675.45	3200867.90	1291337.35	40°07'51.172"N	104°46'53.837"W	point
AGGREGATE STATE 36N-16HZ BHL ON PLAT (1'FSL & 2310'FEL, SEC.16) REV-1		7207.00	-7665.52	825.45	3201017.88	1291338.57	40°07'51.172"N	104°46'51.906"W	point
AGGREGATE STATE 36N-16HZ LAND BOX		7207.00	0.00	0.00	3200130.61	1298996.84	40°09'06.923"N	104°47'02.533"W	polygon

WELLPATH COMPOSITION - Ref Wellbore: AGGREGATE STATE 36N-16HZ AWB Ref Wellpath: AGGREGATE STATE 36N-16HZ AWP					
Start MD [ft]	End MD [ft]	Positional Uncertainty Model	Log Name/Comment	Wellbore	
16.00	913.00	Generic gyro - continuous (Standard)	MS ENERGY GYRO SURVEYS <116-913>	AGGREGATE STATE 36N-16HZ AWB	
913.00	7582.00	NaviTrak (MAGCORR,IFR)	BHI MWD+IFR SURVEYS 8 3/4" HOLE <1084-7582>	AGGREGATE STATE 36N-16HZ AWB	
7582.00	14627.00	NaviTrak (MAGCORR,IFR)	BHI MWD+IFR SURVEYS 6 1/8" HOLE <7733-14627>	AGGREGATE STATE 36N-16HZ AWB	
14627.00	14683.00	Blind Drilling (std)	Projection to bit	AGGREGATE STATE 36N-16HZ AWB	

REFERENCE WELLPATH IDENTIFICATION

Operator	KERR-MCGEE OIL & GAS ONSHORE LP	Slot	SLOT#04 AGGREGATE STATE 36N-16HZ (2389' FSL & 2140' FWL, SEC.09)
Area	COLORADO	Well	AGGREGATE STATE 36N-16HZ
Field	WELD COUNTY (KERR MCGEE)	Wellbore	AGGREGATE STATE 36N-16HZ AWB
Facility	SEC.09-T2N-R66W		

WELLPATH COMMENTS

MD [ft]	Inclination [°]	Azimuth [°]	TVD [ft]	Comment
16.00	0.000	252.570	16.00	TIE ON
116.00	0.250	252.570	116.00	BEGIN GYRO SURVEYS
913.00	0.340	340.880	912.97	TIE ONTO GYRO SURVEYS
1084.00	0.240	10.480	1083.97	BEGIN BHI MWD+IFR SURVEYS
7619.00	86.216	180.478	7204.13	7" CASING POINT
14627.00	90.030	179.730	7210.54	LAST BHI MWD+IFR SURVEY
14683.00	90.030	179.730	7210.51	PROJECTION TO BIT